

RESOLUTION NO. 18-2024

**A RESOLUTION OF THE
SOUTH BEND BOARD OF PUBLIC WORKS
ACCEPTING THE ASSIGNMENT OF TAX SALE
CERTIFICATES FROM ST. JOSEPH COUNTY, INDIANA**

WHEREAS, St. Joseph County, Indiana (the “County”) is the owner of certain Tax Sale Certificates (“Certificate”) for real estate parcels (“Parcels”) situated in St. Joseph County, Indiana and being more particularly described in Exhibit “A” (the “Parcels”); and

WHEREAS, the South Bend Board of Public Works (the “City”), desires to acquire the Certificates from the County for the purpose of rehabilitating the Real Property and returning the Real Property to the tax rolls; and

WHEREAS, the County desires to transfer the Certificates to the City for the purpose stated herein; and

WHEREAS, pursuant to I.C. 36-2-2-20, the Board of Commissioners of St. Joseph County, Indiana (the “Board”) has custody of and may maintain all real property of St. Joseph County; and

WHEREAS, pursuant to Indiana Code Section 36-7-14-12.2, the South Bend Board of Public Works may acquire by purchase, exchange, gift, grant, condemnation or lease, or any combination of methods, any interest in real property needed for the redevelopment of areas needing redevelopment that are located within the corporate boundaries of the City of South Bend; and

WHEREAS, pursuant to I.C. 36-1-11-8, the County, acting by and through the Board, may exchange or transfer property with another governmental entity upon terms and conditions agreed upon by the two (2) entities as evidenced by the adoption of substantially identical resolutions of each entity; and

WHEREAS, the County is willing to assign the Certificates to the City upon payment of One Dollar (\$1.00) per parcel.

NOW, THEREFORE BE IT RESOLVED BY THE SOUTH BEND BOARD OF PUBLIC WORKS AS FOLLOWS:

1. That the assignment of the Tax Sale Certificates situated in St. Joseph County, Indiana, and more particularly described in Exhibit “A”, hereto, by St. Joseph County, Indiana, to the South Bend Board of Public Works, shall be, and hereby is, accepted, subject to the adoption of a resolution by the Board of Commissioners of St. Joseph County, Indiana, substantially identical in its terms and conditions as this resolution.

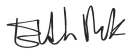
2. That upon receipt of fully executed assignments of the Certificates the City shall take all statutory processes necessary to secure the Tax Title Deeds for Parcels and be fully responsible for all costs and expenses incurred to do so.

3. For and in consideration of such transfers, the City shall pay to the County, St. Joseph County Auditor, the sum of One Dollar (\$1.00) per parcel.

4. That this Resolution shall be in full force and effect upon its adoption.

ADOPTED at the meeting of the South Bend Board of Public Works held on June 25, 2024, South Bend, Indiana 46601.

CITY OF SOUTH BEND, INDIANA
BOARD OF PUBLIC WORKS



Elizabeth A. Maradik, President



Joseph R. Molnar, Vice President



Gary A. Gilot, Member



Briana Micou, Member



Murray L. Miller, Member



Attest: Theresa M. Heffner, Clerk

Date: June 25, 2024

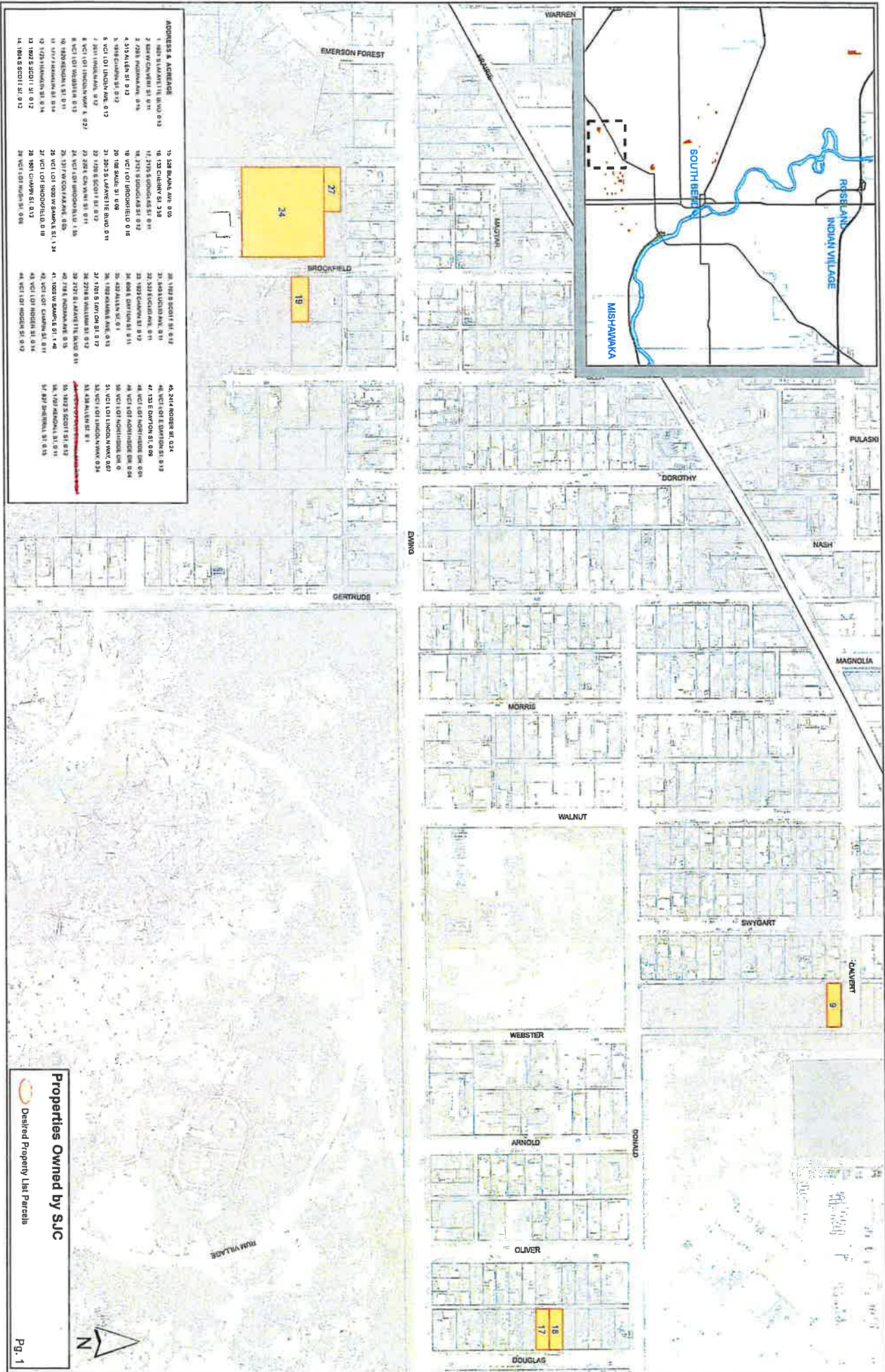
RESOLUTION NO. R-C-10-10

Exhibit A

PARCELID	PARCELSTAT	LEGALDESCR	PROP_ADDR	PROP_CITY	PROP_STATE	PROP_ZIP			
018-6041-1363	71-09-17-255-001.000-026	Lot Y Twin City Realty Co	VCT LOT NORTHSIDE DR						
018-6039-1270	71-09-17-178-001.000-026	Lot Lettered I Twin City Realty Co Add Facing N Side	VCT LOT NORTHSIDE DR						
018-6039-1263	71-09-17-176-023.000-026	Lot E Twin City Realty Co Add E Facing N Side Blvd	VCT LOT NORTHSIDE DR						
018-7070-2590	71-09-18-152-001.000-026	50 Ft W Slide Lot P Leers Survey	VCT LOT LINCOLN WAY						
018-7071-2638	71-09-18-102-001.000-026	Lot A Leers Survey	VCT LOT LINCOLN WAY						
018-8067-2592	71-08-14-354-015.000-026	Lot 66 Prairie Ave Land Co 1st Add	VCT LOT WEBSTER						
018-8154-5555	71-08-22-226-008.000-026	1.72 Ac Beg 256 Ft S Of Nw Cor Ne Ne Nw Cor Lots 2	VCT LOT BROOKFIELD						
018-8154-555901	71-08-22-226-006.000-026	Tr Of Land Ne1/4 Ne1/4 Sec 22-37-2e Beg 16' S Of Sw	VCT LOT BROOKFIELD						
018-8154-5558	71-08-22-228-008.000-026	50' X 135' Beg 116' S Of Sw Cor Lot 16 W & K Rum Vi	VCT LOT BROOKFIELD						
018-8037-1432	71-08-12-479-002.000-026	Lot 3 Petermans Sub	VCT LOT LINCOLN WAY E						
018-8021-084201	71-08-14-202-001.000-026	Tract On Sample St Beg At Sw Cor Catalpa St. W 1/2	1000 W SAMPLE ST	SOUTH BEND	IN	46601			
018-2070-2586	71-08-03-385-008.000-026	Lot 217 Kaleys 3rd	VCT LOT ROGER ST						
018-2070-2585	71-08-03-385-007.000-026	Lot 218 Kaleys 3rd	VCT LOT ROGER ST						
018-2070-2583	71-08-03-385-005.000-026	Lots 219 & 220 Kaleys 3rd	2414 ROGER ST	SOUTH BEND	IN	46628			
018-1045-1922	71-08-11-106-007.000-026	S Part Lot 28 Studebaker & Hines	1317 W COLFAX AVE	SOUTH BEND	IN	46628			
018-1037-1628	71-08-02-376-020.000-026	Lot 15 Orchard Hts 1st	540 EUCLID AVE	SOUTH BEND	IN	46628			
018-1037-1629	71-08-02-376-021.000-026	Lot 16 Orchard Heights 1st	532 EUCLID AVE	SOUTH BEND	IN	46628			
018-1035-1526	71-08-02-378-024.000-026	Lot 21 J N Lederers Add	515 ALLEN ST	SOUTH BEND	IN	46616			
018-1035-1520	71-08-02-378-018.000-026	J N Lederers Sub Of O L A E 38.2 Of Lot 34	528 BLAINE AVE	SOUTH BEND	IN	46616			
018-1032-1416	71-08-02-379-018.000-026	Lot 7 Birner Pl Add	432 ALLEN ST	SOUTH BEND	IN	46616			
018-1032-1415	71-08-02-379-017.000-026	Lot 8 Birner Pl Add	438 ALLEN ST	SOUTH BEND	IN	46616			
018-2066-2456	71-08-03-378-009.000-026	Lot 33 Kaleys 1st	VCT LOT LINDEN AVE						
018-2066-2457	71-08-03-378-010.000-026	Lot 34 Kaleys 1st	2611 LINDEN AVE	SOUTH BEND	IN	46628			
018-2023-0718	71-08-10-209-018.000-026	Lot 85 Arnolds 2nd	109 SADIE ST	SOUTH BEND	IN	46628			
018-7047-1820	71-08-13-403-009.000-026	Lot 26 H Studebaker 1st Add	726 E INDIANA AVE	SOUTH BEND	IN	46613			
018-7047-1818	71-08-13-403-007.000-026	Lot 24 H Studebaker 1st	718 E INDIANA AVE	SOUTH BEND	IN	46613			
018-7015-0597	71-08-13-254-003.000-026	Lots 204 205 35 Ft N End Ft S End Ea Wenger & Kreig	VCT LOT RUSH ST						
018-7042-1646	71-08-13-329-026.000-026	20 Ft E Side 87 Ft S End Lot 8 & 87 Ft S End Lot 9 Du	133 E DAYTON ST	SOUTH BEND	IN	46613			
018-7042-1648	71-08-13-329-023.000-026	40 Ft W Side Lot 7 Duballs 1st Add	VCT LOT E DAYTON ST						
018-7034-1347	71-08-13-380-006.000-026	37 1/2 Ft W S Lot 38 Bowman 3rd	220 E CALVERT ST	SOUTH BEND	IN	46613			
018-7048-1872	71-08-13-451-013.000-026	Lot 121 Henry Studebakers 2nd	606 E DAYTON ST	SOUTH BEND	IN	46613			
018-8074-2811	71-08-14-379-022.000-026	Lot 37 South West Add	2125 S DOUGLAS ST	SOUTH BEND	IN	46613			
018-8074-2810	71-08-14-379-021.000-026	Lot 36 South West Add	2121 S DOUGLAS ST	SOUTH BEND	IN	46613			
018-8034-1455	71-08-14-405-001.000-026	N 1/2 Lot 174 Ruffs 4th Add	1702 KEMBLE AVE	SOUTH BEND	IN	46613			
018-8033-1440	71-08-14-406-021.000-026	Lot 187 Ruffs 4th Add	1801 CHAPIN ST	SOUTH BEND	IN	46613			
018-8037-1536	71-08-14-452-017.000-026	Lot 91 City View Pl	1919 CHAPIN ST	SOUTH BEND	IN	46613			
018-8037-1537	71-08-14-452-018.000-026	Lot 90 City View Place	1923 CHAPIN ST	SOUTH BEND	IN	46613			
018-8040-1601	71-08-14-453-008.000-026	Lot 8 Creeds 1st Add	827 SHERRILL ST	SOUTH BEND	IN	46613			
018-8045-1783	71-08-14-458-011.000-026	Lot 22 Shivelys 1st Add	VCT LOT CHAPIN ST						
018-8031-1302	71-08-14-409-013.000-026	N 1/2 Lot 105 So Bend & Gary Land Co	1707 KENDALL ST	SOUTH BEND	IN	46613			
018-8031-1350	71-08-14-410-017.000-026	N 1/2 Lot 93 South Bend & Gary Land Co	1820 KENDALL ST	SOUTH BEND	IN	46613			
018-8030-1245	71-08-14-430-001.000-026	N 1/2 Lot 61 South Bend & Gary Land Co	1702 S SCOTT ST	SOUTH BEND	IN	46613			
018-8030-1263	71-08-14-430-019.000-026	N1/2 Lot 40 So Bend & Gary Land Co	1701 S TAYLOR ST	SOUTH BEND	IN	46613			
018-8030-1251	71-08-14-430-007.000-026	N1/2 Lot 58 So Bend & Gary Land Co	1720 S SCOTT ST	SOUTH BEND	IN	46613			
018-8030-1255	71-08-14-430-011.000-026	N 1/2 Lot 56 So Bend & Gary Land Co	1802 S SCOTT ST	SOUTH BEND	IN	46613			
018-8030-1256	71-08-14-430-012.000-026	S 1/2 Lot 56 So Bend & Gary Land Co	1804 S SCOTT ST	SOUTH BEND	IN	46613			
018-8030-1258	71-08-14-430-014.000-026	Lot 55 51/2 So Bend & Gary Land Co	1812 S SCOTT ST	SOUTH BEND	IN	46613			
018-8042-1664	71-08-14-476-008.000-026	Lot 132 D M Shivelys 1st Add	604 W CALVERT ST	SOUTH BEND	IN	46613			
018-8029-1226	71-08-14-432-027.000-026	S 1/2 Lot 3 So Bend & Gary Land Co	1717 FRANKLIN ST	SOUTH BEND	IN	46613			
018-8029-1227	71-08-14-432-028.000-026	N 1/2 Lot 4 So Bend & Gary Land Co	1725 FRANKLIN ST	SOUTH BEND	IN	46613			
018-8046-1834	71-08-14-481-011.000-026	Lot 299 D M Shivelys 1st Add	2218 S WILLIAM ST	SOUTH BEND	IN	46613			
018-8012-0557	71-08-13-351-022.000-026	Lot 22 Plat Of Southlawn	2121 S LAFAYETTE BLVD	SOUTH BEND	IN	46613			
018-8012-0545	71-08-13-351-011.000-026	Lot 11 Plat Of Southlawn	2013 S LAFAYETTE BLVD	SOUTH BEND	IN	46613			
018-8012-0535	71-08-13-351-001.000-026	Lot 1 Plat Of Southlawn	1901 S LAFAYETTE BLVD	SOUTH BEND	IN	46613			
018-8021-0842	71-08-14-202-002.000-026	Parc Of Land Beg 206' W Of Sw Cor Sample St & Cata	VCT LOT 1000 W SAMPLE ST						
018-3077-3080	71-08-11-153-007.000-026	Lots 12 Thru 15 & E1/2 Vac Alley W & Adj & Trl Pt So	133 CHERRY ST	SOUTH BEND	IN	46628			
018-4068-250803	71-08-09-256-010.000-026	So 80 Ft Lot 1052 LaSalle Park 2nd	326 S WELLINGTON ST	SOUTH BEND	IN	46619	018-4068-2	LaSalle Par	A
018-4115-4358	71-08-09-226-007.000-026	Lot F Replat Of Lots 1079-80 LaSalle Park 2nd	242 N KENMORE ST	SOUTH BEND	IN	46619	018-4115-4	LaSalle Par	B
018-4116-4383	71-08-09-206-009.000-026	Replat Of Lot 1036 Lot D La Salle Park	114 N ILLINOIS ST	SOUTH BEND	IN	46619	018-4116-4	LaSalle Par	C

Exhibit A

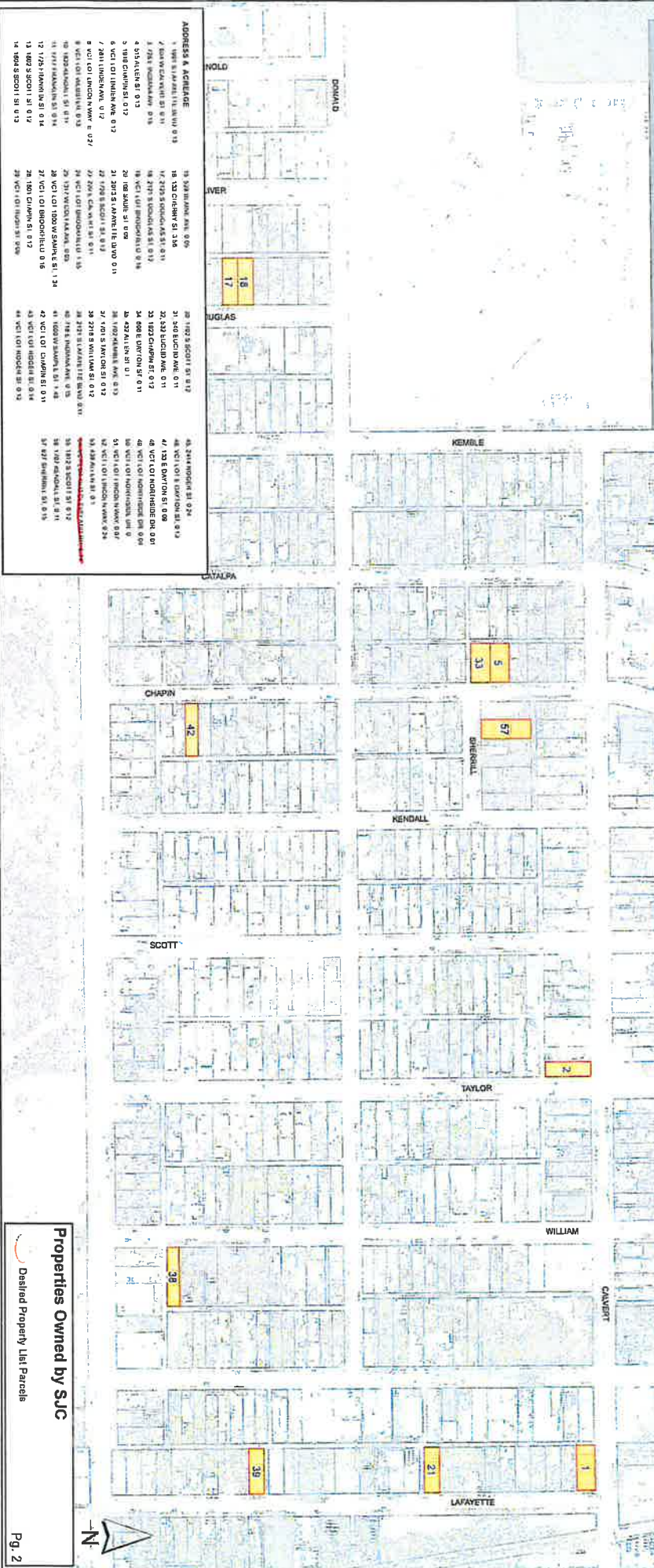
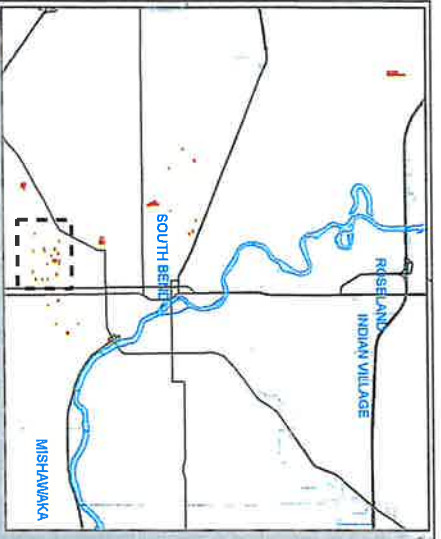
PARCELID	PARCELSTAT	LEGALDESCR	PROP_ADDR	PROP_CITY	PROP_STATE	PROP_ZIP			
018-4057-2111	71-08-10-156-011.000-026	Lot 207 La Salle Park 2nd Plat	142 S LIBERTY ST	SOUTH BEND	IN	46619	018-4057-2	LaSalle Par	D
018-4117-4445	71-08-09-253-002.000-026	Replat Of Lot 1035 Lot E LaSalle Park 2nd replat	106 S ILLINOIS ST	SOUTH BEND	IN	46619	018-4117-4	LaSalle Par	E
018-4066-2440	71-08-09-206-014.000-026	Lot 1044 Ex 19' N End & Ex S 100' Lasalle Park Additi	129 N WELLINGTON ST	SOUTH BEND	IN	46619	018-4066-2	LaSalle Par	F
018-4117-4457	71-08-09-276-004.000-026	Replat Of Lot 1073 Lot D Lasalle Park	214 S KENMORE ST	SOUTH BEND	IN	46619	018-4117-4	LaSalle Par	G
018-4033-1168	71-08-10-178-014.000-026	Lot 785 Summlt Pl 3rd	205 S MEADE ST	SOUTH BEND	IN	46619	018-4033-1	LaSalle Par	H
018-4032-1154	71-08-10-157-019.000-026	Lot 1025 Summlt Pl 3rd	129 S KALEY ST	SOUTH BEND	IN	46619	018-4032-1	LaSalle Par	I
018-4031-1124	71-08-10-157-016.000-026	Lot 1022 Summlt Pl 3rd	117 S KALEY ST	SOUTH BEND	IN	46619	018-4031-1	LaSalle Par	J
018-4067-2487	71-08-09-201-024.000-026	N 40'X S 204' Lot 100S Lasalle Pk	117 N CHICAGO ST	SOUTH BEND	IN	46619	018-4067-2	LaSalle Par	K
018-4029-1034	71-08-10-135-005.000-026	Lot 695 Summlt Place 3rd	2610 W COLFAX AVE	SOUTH BEND	IN	46619	018-4029-1	LaSalle Par	L
018-4030-1082	71-08-10-136-011.000-026	Lot 729 Summlt Pl. 3rd	2637 W WASHINGTON ST	SOUTH BEND	IN	46619	018-4030-1	LaSalle Par	M
018-4057-2088	71-08-10-156-031.000-026	Lot 218 Lasalle Park 2nd	109 S BENDIX DR	SOUTH BEND	IN	46619	018-4057-2	LaSalle Par	N
018-4115-4313	71-08-09-203-021.000-026	Replat Of Lot 1043-42-41 Lot L 2nd Plat Lasalle Park	245 N WELLINGTON ST	SOUTH BEND	IN	46619	018-4115-4	LaSalle Par	O
018-4115-4280	71-08-09-202-020.000-026	S 24' Lot 1021 A & Vac Alley S & Adj Lasalle Pk Lot 10	245 N ILLINOIS ST	SOUTH BEND	IN	46619	018-4115-4	LaSalle Par	P
018-4115-4355	71-08-09-226-010.000-026	Lot C Replat Of Lots 1079.80 Lasalle Park	230 N KENMORE ST	SOUTH BEND	IN	46619	018-4115-4	LaSalle Par	Q
018-4069-2538	71-08-09-252-011.000-026	No 40 Ft Of So 80 Ft Lot 1014 Lasalle Park 2nd	142 S CHICAGO ST	SOUTH BEND	IN	46619	018-4069-2	LaSalle Par	R



ADDRESS & ADDRESS

1	1801 S. MAIN ST. 013	25	208 MAIN AVE. 010
2	800 W. CANTON ST. 011	26	232 CANTON ST. 010
3	7201 W. MAIN AVE. 015	27	17201 S. BROADWAY ST. 011
4	515 ALLEN ST. 012	28	18211 S. BROADWAY ST. 012
5	378 CANTON ST. 012	29	18211 S. BROADWAY ST. 012
6	1011 LINDEN AVE. 012	30	18211 S. BROADWAY ST. 012
7	1011 W. MAIN AVE. 012	31	18211 S. BROADWAY ST. 012
8	1011 W. MAIN AVE. 012	32	18211 S. BROADWAY ST. 012
9	1011 W. MAIN AVE. 012	33	18211 S. BROADWAY ST. 012
10	1011 W. MAIN AVE. 012	34	18211 S. BROADWAY ST. 012
11	1011 W. MAIN AVE. 012	35	18211 S. BROADWAY ST. 012
12	1011 W. MAIN AVE. 012	36	18211 S. BROADWAY ST. 012
13	1011 W. MAIN AVE. 012	37	18211 S. BROADWAY ST. 012
14	1011 W. MAIN AVE. 012	38	18211 S. BROADWAY ST. 012
15	1011 W. MAIN AVE. 012	39	18211 S. BROADWAY ST. 012
16	1011 W. MAIN AVE. 012	40	18211 S. BROADWAY ST. 012
17	1011 W. MAIN AVE. 012	41	18211 S. BROADWAY ST. 012
18	1011 W. MAIN AVE. 012	42	18211 S. BROADWAY ST. 012
19	1011 W. MAIN AVE. 012	43	18211 S. BROADWAY ST. 012
20	1011 W. MAIN AVE. 012	44	18211 S. BROADWAY ST. 012
21	1011 W. MAIN AVE. 012	45	18211 S. BROADWAY ST. 012
22	1011 W. MAIN AVE. 012	46	18211 S. BROADWAY ST. 012
23	1011 W. MAIN AVE. 012	47	18211 S. BROADWAY ST. 012
24	1011 W. MAIN AVE. 012	48	18211 S. BROADWAY ST. 012
25	1011 W. MAIN AVE. 012	49	18211 S. BROADWAY ST. 012
26	1011 W. MAIN AVE. 012	50	18211 S. BROADWAY ST. 012
27	1011 W. MAIN AVE. 012	51	18211 S. BROADWAY ST. 012
28	1011 W. MAIN AVE. 012	52	18211 S. BROADWAY ST. 012
29	1011 W. MAIN AVE. 012	53	18211 S. BROADWAY ST. 012
30	1011 W. MAIN AVE. 012	54	18211 S. BROADWAY ST. 012
31	1011 W. MAIN AVE. 012	55	18211 S. BROADWAY ST. 012
32	1011 W. MAIN AVE. 012	56	18211 S. BROADWAY ST. 012
33	1011 W. MAIN AVE. 012	57	18211 S. BROADWAY ST. 012
34	1011 W. MAIN AVE. 012	58	18211 S. BROADWAY ST. 012
35	1011 W. MAIN AVE. 012	59	18211 S. BROADWAY ST. 012
36	1011 W. MAIN AVE. 012	60	18211 S. BROADWAY ST. 012
37	1011 W. MAIN AVE. 012	61	18211 S. BROADWAY ST. 012
38	1011 W. MAIN AVE. 012	62	18211 S. BROADWAY ST. 012
39	1011 W. MAIN AVE. 012	63	18211 S. BROADWAY ST. 012
40	1011 W. MAIN AVE. 012	64	18211 S. BROADWAY ST. 012
41	1011 W. MAIN AVE. 012	65	18211 S. BROADWAY ST. 012
42	1011 W. MAIN AVE. 012	66	18211 S. BROADWAY ST. 012
43	1011 W. MAIN AVE. 012	67	18211 S. BROADWAY ST. 012
44	1011 W. MAIN AVE. 012	68	18211 S. BROADWAY ST. 012
45	1011 W. MAIN AVE. 012	69	18211 S. BROADWAY ST. 012
46	1011 W. MAIN AVE. 012	70	18211 S. BROADWAY ST. 012
47	1011 W. MAIN AVE. 012	71	18211 S. BROADWAY ST. 012
48	1011 W. MAIN AVE. 012	72	18211 S. BROADWAY ST. 012
49	1011 W. MAIN AVE. 012	73	18211 S. BROADWAY ST. 012
50	1011 W. MAIN AVE. 012	74	18211 S. BROADWAY ST. 012
51	1011 W. MAIN AVE. 012	75	18211 S. BROADWAY ST. 012
52	1011 W. MAIN AVE. 012	76	18211 S. BROADWAY ST. 012
53	1011 W. MAIN AVE. 012	77	18211 S. BROADWAY ST. 012
54	1011 W. MAIN AVE. 012	78	18211 S. BROADWAY ST. 012
55	1011 W. MAIN AVE. 012	79	18211 S. BROADWAY ST. 012
56	1011 W. MAIN AVE. 012	80	18211 S. BROADWAY ST. 012
57	1011 W. MAIN AVE. 012	81	18211 S. BROADWAY ST. 012
58	1011 W. MAIN AVE. 012	82	18211 S. BROADWAY ST. 012
59	1011 W. MAIN AVE. 012	83	18211 S. BROADWAY ST. 012
60	1011 W. MAIN AVE. 012	84	18211 S. BROADWAY ST. 012
61	1011 W. MAIN AVE. 012	85	18211 S. BROADWAY ST. 012
62	1011 W. MAIN AVE. 012	86	18211 S. BROADWAY ST. 012
63	1011 W. MAIN AVE. 012	87	18211 S. BROADWAY ST. 012
64	1011 W. MAIN AVE. 012	88	18211 S. BROADWAY ST. 012
65	1011 W. MAIN AVE. 012	89	18211 S. BROADWAY ST. 012
66	1011 W. MAIN AVE. 012	90	18211 S. BROADWAY ST. 012
67	1011 W. MAIN AVE. 012	91	18211 S. BROADWAY ST. 012
68	1011 W. MAIN AVE. 012	92	18211 S. BROADWAY ST. 012
69	1011 W. MAIN AVE. 012	93	18211 S. BROADWAY ST. 012
70	1011 W. MAIN AVE. 012	94	18211 S. BROADWAY ST. 012
71	1011 W. MAIN AVE. 012	95	18211 S. BROADWAY ST. 012
72	1011 W. MAIN AVE. 012	96	18211 S. BROADWAY ST. 012
73	1011 W. MAIN AVE. 012	97	18211 S. BROADWAY ST. 012
74	1011 W. MAIN AVE. 012	98	18211 S. BROADWAY ST. 012
75	1011 W. MAIN AVE. 012	99	18211 S. BROADWAY ST. 012
76	1011 W. MAIN AVE. 012	100	18211 S. BROADWAY ST. 012

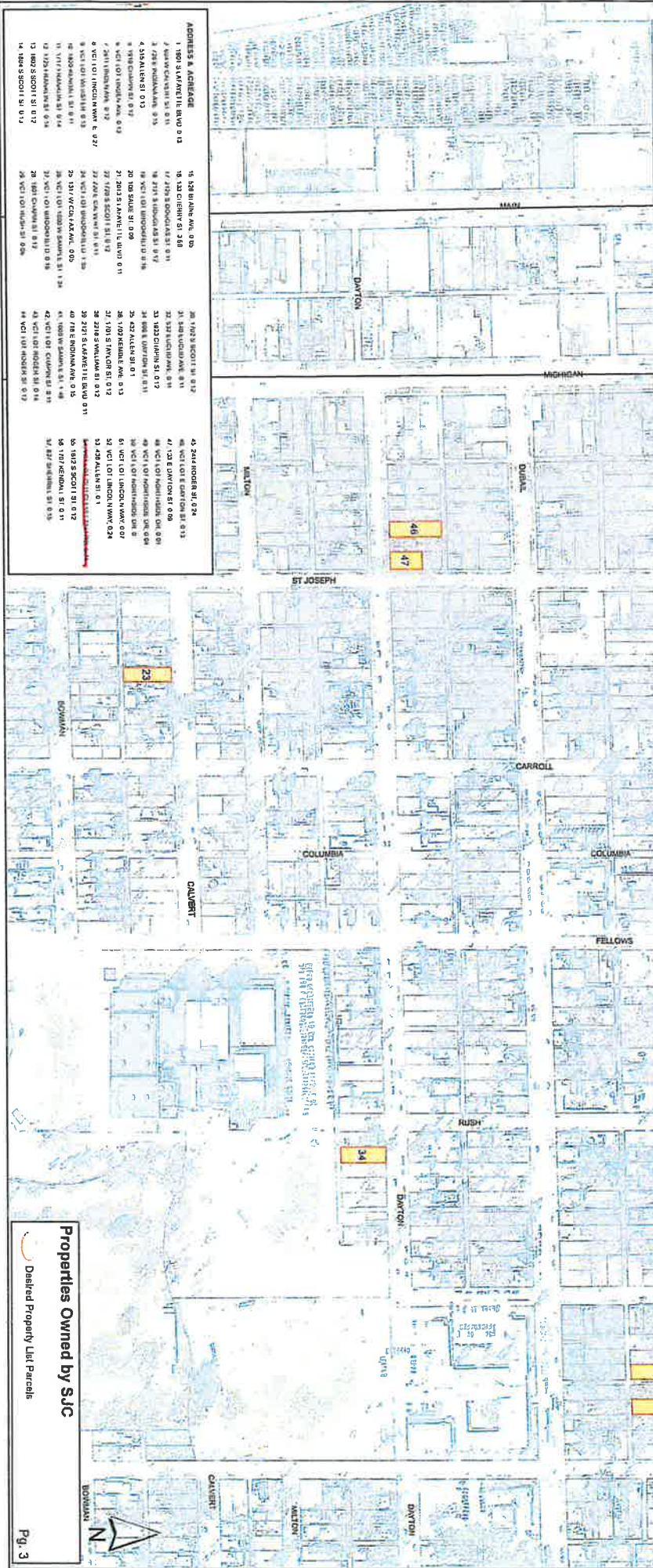
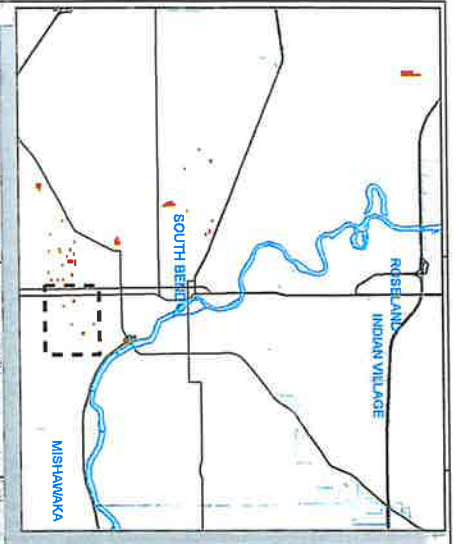
Properties Owned by SUC
 Desired Property List Parcels



ADDRESS & ACREAGE

1	1813 S SCOTT ST 0.12
2	310 S UNION AVE 0.11
3	1813 S SCOTT ST 0.12
4	1813 S SCOTT ST 0.12
5	1813 S SCOTT ST 0.12
6	1813 S SCOTT ST 0.12
7	1813 S SCOTT ST 0.12
8	1813 S SCOTT ST 0.12
9	1813 S SCOTT ST 0.12
10	1813 S SCOTT ST 0.12
11	1813 S SCOTT ST 0.12
12	1813 S SCOTT ST 0.12
13	1813 S SCOTT ST 0.12
14	1813 S SCOTT ST 0.12
15	1813 S SCOTT ST 0.12
16	1813 S SCOTT ST 0.12
17	1813 S SCOTT ST 0.12
18	1813 S SCOTT ST 0.12
19	1813 S SCOTT ST 0.12
20	1813 S SCOTT ST 0.12
21	1813 S SCOTT ST 0.12
22	1813 S SCOTT ST 0.12
23	1813 S SCOTT ST 0.12
24	1813 S SCOTT ST 0.12
25	1813 S SCOTT ST 0.12
26	1813 S SCOTT ST 0.12
27	1813 S SCOTT ST 0.12
28	1813 S SCOTT ST 0.12
29	1813 S SCOTT ST 0.12
30	1813 S SCOTT ST 0.12
31	1813 S SCOTT ST 0.12
32	1813 S SCOTT ST 0.12
33	1813 S SCOTT ST 0.12
34	1813 S SCOTT ST 0.12
35	1813 S SCOTT ST 0.12
36	1813 S SCOTT ST 0.12
37	1813 S SCOTT ST 0.12
38	1813 S SCOTT ST 0.12
39	1813 S SCOTT ST 0.12
40	1813 S SCOTT ST 0.12
41	1813 S SCOTT ST 0.12
42	1813 S SCOTT ST 0.12
43	1813 S SCOTT ST 0.12
44	1813 S SCOTT ST 0.12
45	1813 S SCOTT ST 0.12
46	1813 S SCOTT ST 0.12
47	1813 S SCOTT ST 0.12
48	1813 S SCOTT ST 0.12
49	1813 S SCOTT ST 0.12
50	1813 S SCOTT ST 0.12
51	1813 S SCOTT ST 0.12
52	1813 S SCOTT ST 0.12
53	1813 S SCOTT ST 0.12
54	1813 S SCOTT ST 0.12
55	1813 S SCOTT ST 0.12
56	1813 S SCOTT ST 0.12
57	1813 S SCOTT ST 0.12
58	1813 S SCOTT ST 0.12
59	1813 S SCOTT ST 0.12

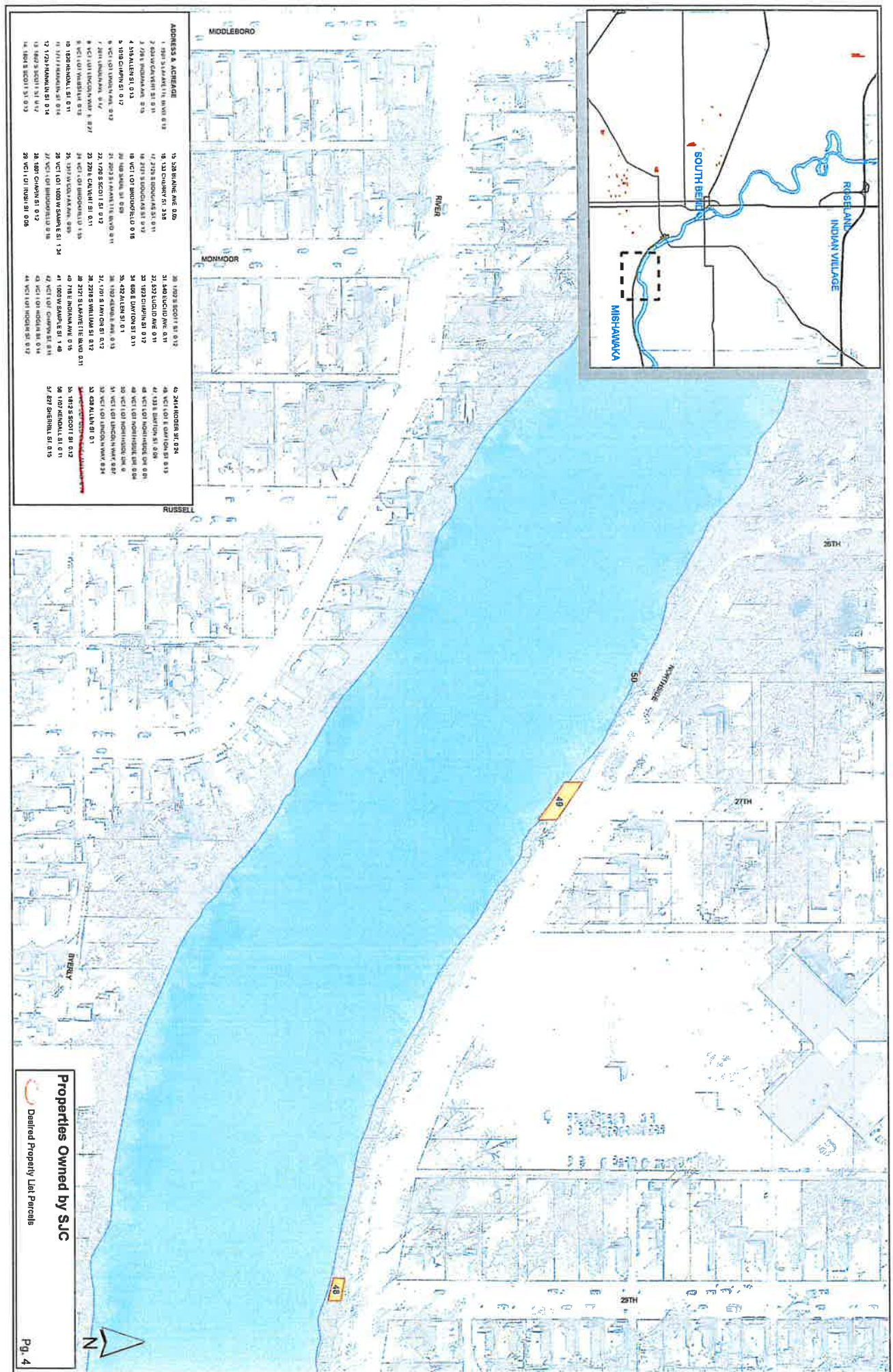
Properties Owned by SJC
 Dashed Property List Parcels



ADDRESS & ADDRESS

1	1801 S. ADELLE BLVD. 012
2	720 W. CANTON ST. 011
3	270 E. CANTON ST. 012
4	370 E. CANTON ST. 013
5	470 E. CANTON ST. 014
6	570 E. CANTON ST. 015
7	670 E. CANTON ST. 016
8	770 E. CANTON ST. 017
9	870 E. CANTON ST. 018
10	970 E. CANTON ST. 019
11	1070 E. CANTON ST. 020
12	1170 E. CANTON ST. 021
13	1270 E. CANTON ST. 022
14	1370 E. CANTON ST. 023
15	1470 E. CANTON ST. 024
16	1570 E. CANTON ST. 025
17	1670 E. CANTON ST. 026
18	1770 E. CANTON ST. 027
19	1870 E. CANTON ST. 028
20	1970 E. CANTON ST. 029
21	2070 E. CANTON ST. 030
22	2170 E. CANTON ST. 031
23	2270 E. CANTON ST. 032
24	2370 E. CANTON ST. 033
25	2470 E. CANTON ST. 034
26	2570 E. CANTON ST. 035
27	2670 E. CANTON ST. 036
28	2770 E. CANTON ST. 037
29	2870 E. CANTON ST. 038
30	2970 E. CANTON ST. 039
31	3070 E. CANTON ST. 040
32	3170 E. CANTON ST. 041
33	3270 E. CANTON ST. 042
34	3370 E. CANTON ST. 043
35	3470 E. CANTON ST. 044
36	3570 E. CANTON ST. 045
37	3670 E. CANTON ST. 046
38	3770 E. CANTON ST. 047
39	3870 E. CANTON ST. 048
40	3970 E. CANTON ST. 049
41	4070 E. CANTON ST. 050
42	4170 E. CANTON ST. 051
43	4270 E. CANTON ST. 052
44	4370 E. CANTON ST. 053
45	4470 E. CANTON ST. 054
46	4570 E. CANTON ST. 055
47	4670 E. CANTON ST. 056
48	4770 E. CANTON ST. 057
49	4870 E. CANTON ST. 058
50	4970 E. CANTON ST. 059
51	5070 E. CANTON ST. 060
52	5170 E. CANTON ST. 061
53	5270 E. CANTON ST. 062
54	5370 E. CANTON ST. 063
55	5470 E. CANTON ST. 064
56	5570 E. CANTON ST. 065
57	5670 E. CANTON ST. 066
58	5770 E. CANTON ST. 067
59	5870 E. CANTON ST. 068
60	5970 E. CANTON ST. 069
61	6070 E. CANTON ST. 070
62	6170 E. CANTON ST. 071
63	6270 E. CANTON ST. 072
64	6370 E. CANTON ST. 073
65	6470 E. CANTON ST. 074
66	6570 E. CANTON ST. 075
67	6670 E. CANTON ST. 076
68	6770 E. CANTON ST. 077
69	6870 E. CANTON ST. 078
70	6970 E. CANTON ST. 079
71	7070 E. CANTON ST. 080
72	7170 E. CANTON ST. 081
73	7270 E. CANTON ST. 082
74	7370 E. CANTON ST. 083
75	7470 E. CANTON ST. 084
76	7570 E. CANTON ST. 085
77	7670 E. CANTON ST. 086
78	7770 E. CANTON ST. 087
79	7870 E. CANTON ST. 088
80	7970 E. CANTON ST. 089
81	8070 E. CANTON ST. 090
82	8170 E. CANTON ST. 091
83	8270 E. CANTON ST. 092
84	8370 E. CANTON ST. 093
85	8470 E. CANTON ST. 094
86	8570 E. CANTON ST. 095
87	8670 E. CANTON ST. 096
88	8770 E. CANTON ST. 097
89	8870 E. CANTON ST. 098
90	8970 E. CANTON ST. 099
91	9070 E. CANTON ST. 100
92	9170 E. CANTON ST. 101
93	9270 E. CANTON ST. 102
94	9370 E. CANTON ST. 103
95	9470 E. CANTON ST. 104
96	9570 E. CANTON ST. 105
97	9670 E. CANTON ST. 106
98	9770 E. CANTON ST. 107
99	9870 E. CANTON ST. 108
100	9970 E. CANTON ST. 109
101	10070 E. CANTON ST. 110
102	10170 E. CANTON ST. 111
103	10270 E. CANTON ST. 112
104	10370 E. CANTON ST. 113
105	10470 E. CANTON ST. 114
106	10570 E. CANTON ST. 115
107	10670 E. CANTON ST. 116
108	10770 E. CANTON ST. 117
109	10870 E. CANTON ST. 118
110	10970 E. CANTON ST. 119
111	11070 E. CANTON ST. 120
112	11170 E. CANTON ST. 121
113	11270 E. CANTON ST. 122
114	11370 E. CANTON ST. 123
115	11470 E. CANTON ST. 124
116	11570 E. CANTON ST. 125
117	11670 E. CANTON ST. 126
118	11770 E. CANTON ST. 127
119	11870 E. CANTON ST. 128
120	11970 E. CANTON ST. 129
121	12070 E. CANTON ST. 130
122	12170 E. CANTON ST. 131
123	12270 E. CANTON ST. 132
124	12370 E. CANTON ST. 133
125	12470 E. CANTON ST. 134
126	12570 E. CANTON ST. 135
127	12670 E. CANTON ST. 136
128	12770 E. CANTON ST. 137
129	12870 E. CANTON ST. 138
130	12970 E. CANTON ST. 139
131	13070 E. CANTON ST. 140
132	13170 E. CANTON ST. 141
133	13270 E. CANTON ST. 142
134	13370 E. CANTON ST. 143
135	13470 E. CANTON ST. 144
136	13570 E. CANTON ST. 145
137	13670 E. CANTON ST. 146
138	13770 E. CANTON ST. 147
139	13870 E. CANTON ST. 148
140	13970 E. CANTON ST. 149
141	14070 E. CANTON ST. 150
142	14170 E. CANTON ST. 151
143	14270 E. CANTON ST. 152
144	14370 E. CANTON ST. 153
145	14470 E. CANTON ST. 154
146	14570 E. CANTON ST. 155
147	14670 E. CANTON ST. 156
148	14770 E. CANTON ST. 157
149	14870 E. CANTON ST. 158
150	14970 E. CANTON ST. 159
151	15070 E. CANTON ST. 160
152	15170 E. CANTON ST. 161
153	15270 E. CANTON ST. 162
154	15370 E. CANTON ST. 163
155	15470 E. CANTON ST. 164
156	15570 E. CANTON ST. 165
157	15670 E. CANTON ST. 166
158	15770 E. CANTON ST. 167
159	15870 E. CANTON ST. 168
160	15970 E. CANTON ST. 169
161	16070 E. CANTON ST. 170
162	16170 E. CANTON ST. 171
163	16270 E. CANTON ST. 172
164	16370 E. CANTON ST. 173
165	16470 E. CANTON ST. 174
166	16570 E. CANTON ST. 175
167	16670 E. CANTON ST. 176
168	16770 E. CANTON ST. 177
169	16870 E. CANTON ST. 178
170	16970 E. CANTON ST. 179
171	17070 E. CANTON ST. 180
172	17170 E. CANTON ST. 181
173	17270 E. CANTON ST. 182
174	17370 E. CANTON ST. 183
175	17470 E. CANTON ST. 184
176	17570 E. CANTON ST. 185
177	17670 E. CANTON ST. 186
178	17770 E. CANTON ST. 187
179	17870 E. CANTON ST. 188
180	17970 E. CANTON ST. 189
181	18070 E. CANTON ST. 190
182	18170 E. CANTON ST. 191
183	18270 E. CANTON ST. 192
184	18370 E. CANTON ST. 193
185	18470 E. CANTON ST. 194
186	18570 E. CANTON ST. 195
187	18670 E. CANTON ST. 196
188	18770 E. CANTON ST. 197
189	18870 E. CANTON ST. 198
190	18970 E. CANTON ST. 199
191	19070 E. CANTON ST. 200

Properties Owned by SJC
 Dashed Property List Parcel



ADDRESSES & ACREAGE

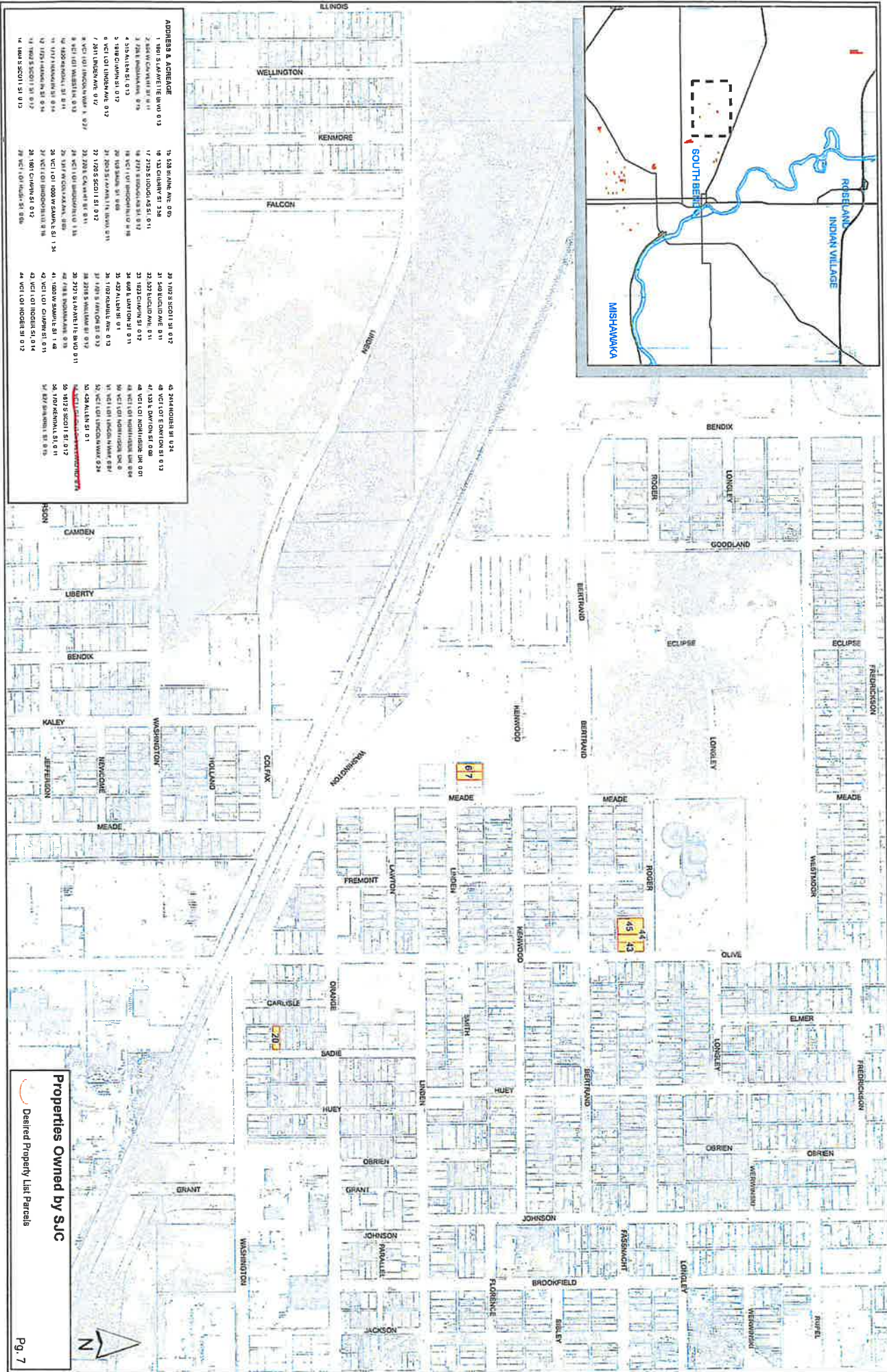
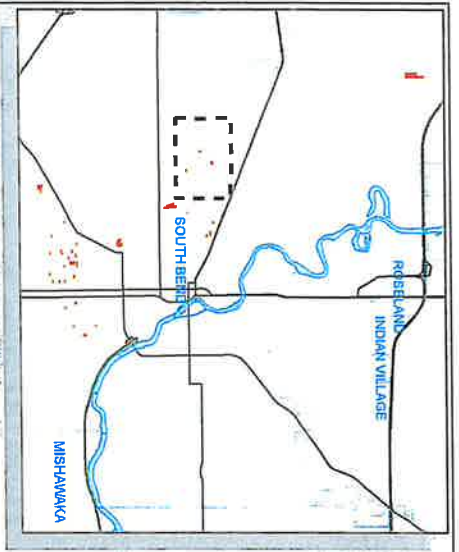
1	2003 W. WALKER ST. 0.13	15	2036 W. WALKER ST. 0.08
2	2004 W. WALKER ST. 0.13	16	2037 W. WALKER ST. 0.08
3	2005 W. WALKER ST. 0.13	17	2038 W. WALKER ST. 0.08
4	2006 W. WALKER ST. 0.13	18	2039 W. WALKER ST. 0.08
5	2007 W. WALKER ST. 0.13	19	2040 W. WALKER ST. 0.08
6	2008 W. WALKER ST. 0.13	20	2041 W. WALKER ST. 0.08
7	2009 W. WALKER ST. 0.13	21	2042 W. WALKER ST. 0.08
8	2010 W. WALKER ST. 0.13	22	2043 W. WALKER ST. 0.08
9	2011 W. WALKER ST. 0.13	23	2044 W. WALKER ST. 0.08
10	2012 W. WALKER ST. 0.13	24	2045 W. WALKER ST. 0.08
11	2013 W. WALKER ST. 0.13	25	2046 W. WALKER ST. 0.08
12	2014 W. WALKER ST. 0.13	26	2047 W. WALKER ST. 0.08
13	2015 W. WALKER ST. 0.13	27	2048 W. WALKER ST. 0.08
14	2016 W. WALKER ST. 0.13	28	2049 W. WALKER ST. 0.08
15	2017 W. WALKER ST. 0.13	29	2050 W. WALKER ST. 0.08
16	2018 W. WALKER ST. 0.13	30	2051 W. WALKER ST. 0.08
17	2019 W. WALKER ST. 0.13	31	2052 W. WALKER ST. 0.08
18	2020 W. WALKER ST. 0.13	32	2053 W. WALKER ST. 0.08
19	2021 W. WALKER ST. 0.13	33	2054 W. WALKER ST. 0.08
20	2022 W. WALKER ST. 0.13	34	2055 W. WALKER ST. 0.08
21	2023 W. WALKER ST. 0.13	35	2056 W. WALKER ST. 0.08
22	2024 W. WALKER ST. 0.13	36	2057 W. WALKER ST. 0.08
23	2025 W. WALKER ST. 0.13	37	2058 W. WALKER ST. 0.08
24	2026 W. WALKER ST. 0.13	38	2059 W. WALKER ST. 0.08
25	2027 W. WALKER ST. 0.13	39	2060 W. WALKER ST. 0.08
26	2028 W. WALKER ST. 0.13	40	2061 W. WALKER ST. 0.08
27	2029 W. WALKER ST. 0.13	41	2062 W. WALKER ST. 0.08
28	2030 W. WALKER ST. 0.13	42	2063 W. WALKER ST. 0.08
29	2031 W. WALKER ST. 0.13	43	2064 W. WALKER ST. 0.08
30	2032 W. WALKER ST. 0.13	44	2065 W. WALKER ST. 0.08
31	2033 W. WALKER ST. 0.13	45	2066 W. WALKER ST. 0.08
32	2034 W. WALKER ST. 0.13	46	2067 W. WALKER ST. 0.08
33	2035 W. WALKER ST. 0.13	47	2068 W. WALKER ST. 0.08
34	2036 W. WALKER ST. 0.13	48	2069 W. WALKER ST. 0.08
35	2037 W. WALKER ST. 0.13	49	2070 W. WALKER ST. 0.08
36	2038 W. WALKER ST. 0.13	50	2071 W. WALKER ST. 0.08
37	2039 W. WALKER ST. 0.13	51	2072 W. WALKER ST. 0.08
38	2040 W. WALKER ST. 0.13	52	2073 W. WALKER ST. 0.08
39	2041 W. WALKER ST. 0.13	53	2074 W. WALKER ST. 0.08
40	2042 W. WALKER ST. 0.13	54	2075 W. WALKER ST. 0.08
41	2043 W. WALKER ST. 0.13	55	2076 W. WALKER ST. 0.08
42	2044 W. WALKER ST. 0.13	56	2077 W. WALKER ST. 0.08
43	2045 W. WALKER ST. 0.13	57	2078 W. WALKER ST. 0.08
44	2046 W. WALKER ST. 0.13	58	2079 W. WALKER ST. 0.08
45	2047 W. WALKER ST. 0.13	59	2080 W. WALKER ST. 0.08
46	2048 W. WALKER ST. 0.13	60	2081 W. WALKER ST. 0.08
47	2049 W. WALKER ST. 0.13	61	2082 W. WALKER ST. 0.08
48	2050 W. WALKER ST. 0.13	62	2083 W. WALKER ST. 0.08
49	2051 W. WALKER ST. 0.13	63	2084 W. WALKER ST. 0.08
50	2052 W. WALKER ST. 0.13	64	2085 W. WALKER ST. 0.08
51	2053 W. WALKER ST. 0.13	65	2086 W. WALKER ST. 0.08
52	2054 W. WALKER ST. 0.13	66	2087 W. WALKER ST. 0.08
53	2055 W. WALKER ST. 0.13	67	2088 W. WALKER ST. 0.08
54	2056 W. WALKER ST. 0.13	68	2089 W. WALKER ST. 0.08
55	2057 W. WALKER ST. 0.13	69	2090 W. WALKER ST. 0.08
56	2058 W. WALKER ST. 0.13	70	2091 W. WALKER ST. 0.08
57	2059 W. WALKER ST. 0.13	71	2092 W. WALKER ST. 0.08
58	2060 W. WALKER ST. 0.13	72	2093 W. WALKER ST. 0.08
59	2061 W. WALKER ST. 0.13	73	2094 W. WALKER ST. 0.08
60	2062 W. WALKER ST. 0.13	74	2095 W. WALKER ST. 0.08
61	2063 W. WALKER ST. 0.13	75	2096 W. WALKER ST. 0.08
62	2064 W. WALKER ST. 0.13	76	2097 W. WALKER ST. 0.08
63	2065 W. WALKER ST. 0.13	77	2098 W. WALKER ST. 0.08
64	2066 W. WALKER ST. 0.13	78	2099 W. WALKER ST. 0.08
65	2067 W. WALKER ST. 0.13	79	2100 W. WALKER ST. 0.08
66	2068 W. WALKER ST. 0.13	80	2101 W. WALKER ST. 0.08
67	2069 W. WALKER ST. 0.13	81	2102 W. WALKER ST. 0.08
68	2070 W. WALKER ST. 0.13	82	2103 W. WALKER ST. 0.08
69	2071 W. WALKER ST. 0.13	83	2104 W. WALKER ST. 0.08
70	2072 W. WALKER ST. 0.13	84	2105 W. WALKER ST. 0.08
71	2073 W. WALKER ST. 0.13	85	2106 W. WALKER ST. 0.08
72	2074 W. WALKER ST. 0.13	86	2107 W. WALKER ST. 0.08
73	2075 W. WALKER ST. 0.13	87	2108 W. WALKER ST. 0.08
74	2076 W. WALKER ST. 0.13	88	2109 W. WALKER ST. 0.08
75	2077 W. WALKER ST. 0.13	89	2110 W. WALKER ST. 0.08
76	2078 W. WALKER ST. 0.13	90	2111 W. WALKER ST. 0.08
77	2079 W. WALKER ST. 0.13	91	2112 W. WALKER ST. 0.08
78	2080 W. WALKER ST. 0.13	92	2113 W. WALKER ST. 0.08
79	2081 W. WALKER ST. 0.13	93	2114 W. WALKER ST. 0.08
80	2082 W. WALKER ST. 0.13	94	2115 W. WALKER ST. 0.08
81	2083 W. WALKER ST. 0.13	95	2116 W. WALKER ST. 0.08
82	2084 W. WALKER ST. 0.13	96	2117 W. WALKER ST. 0.08
83	2085 W. WALKER ST. 0.13	97	2118 W. WALKER ST. 0.08
84	2086 W. WALKER ST. 0.13	98	2119 W. WALKER ST. 0.08
85	2087 W. WALKER ST. 0.13	99	2120 W. WALKER ST. 0.08
86	2088 W. WALKER ST. 0.13	100	2121 W. WALKER ST. 0.08

Properties Owned by SJC

Designated Property List Parcels

Pg. 4





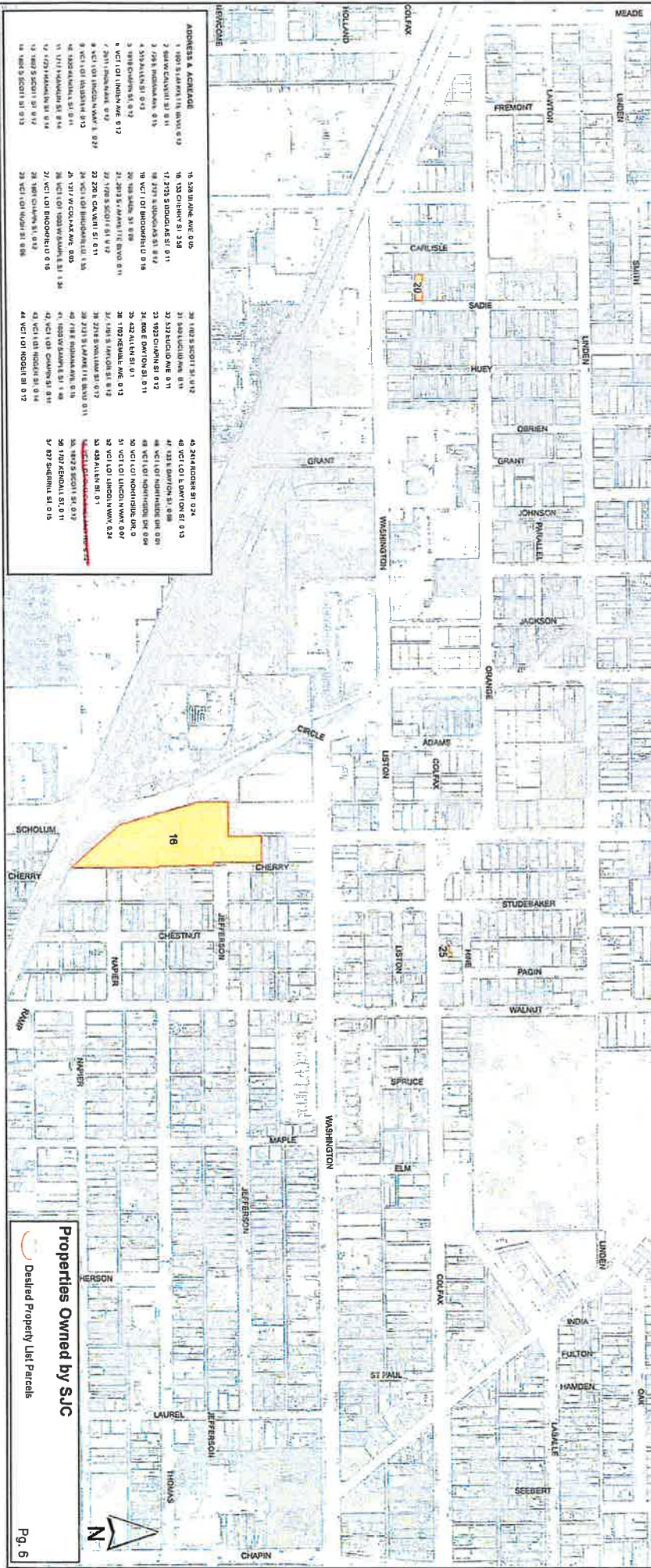
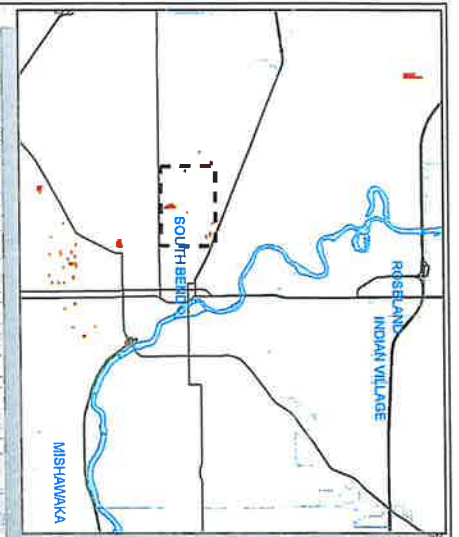
ADDRESS & ACREAGE

1 801 S. JEFFERSON ST. 0.13	19 138 BIRKING AVE. 0.05	21 1805 SCOTT ST. 0.12	43 284 MADISON ST. 0.24
2 801 S. JEFFERSON ST. 0.13	19 138 BIRKING AVE. 0.05	21 1805 SCOTT ST. 0.12	44 103 E. DAVENPORT ST. 0.12
3 801 S. JEFFERSON ST. 0.13	19 138 BIRKING AVE. 0.05	21 1805 SCOTT ST. 0.12	45 103 E. DAVENPORT ST. 0.08
4 801 S. JEFFERSON ST. 0.13	19 138 BIRKING AVE. 0.05	21 1805 SCOTT ST. 0.12	46 103 E. DAVENPORT ST. 0.08
5 801 S. JEFFERSON ST. 0.13	19 138 BIRKING AVE. 0.05	21 1805 SCOTT ST. 0.12	47 103 E. DAVENPORT ST. 0.08
6 801 S. JEFFERSON ST. 0.13	19 138 BIRKING AVE. 0.05	21 1805 SCOTT ST. 0.12	48 103 E. DAVENPORT ST. 0.08
7 801 S. JEFFERSON ST. 0.13	19 138 BIRKING AVE. 0.05	21 1805 SCOTT ST. 0.12	49 103 E. DAVENPORT ST. 0.08
8 801 S. JEFFERSON ST. 0.13	19 138 BIRKING AVE. 0.05	21 1805 SCOTT ST. 0.12	50 103 E. DAVENPORT ST. 0.08
9 801 S. JEFFERSON ST. 0.13	19 138 BIRKING AVE. 0.05	21 1805 SCOTT ST. 0.12	51 103 E. DAVENPORT ST. 0.08
10 801 S. JEFFERSON ST. 0.13	19 138 BIRKING AVE. 0.05	21 1805 SCOTT ST. 0.12	52 103 E. DAVENPORT ST. 0.08
11 801 S. JEFFERSON ST. 0.13	19 138 BIRKING AVE. 0.05	21 1805 SCOTT ST. 0.12	53 103 E. DAVENPORT ST. 0.08
12 801 S. JEFFERSON ST. 0.13	19 138 BIRKING AVE. 0.05	21 1805 SCOTT ST. 0.12	54 103 E. DAVENPORT ST. 0.08
13 801 S. JEFFERSON ST. 0.13	19 138 BIRKING AVE. 0.05	21 1805 SCOTT ST. 0.12	55 103 E. DAVENPORT ST. 0.08
14 801 S. JEFFERSON ST. 0.13	19 138 BIRKING AVE. 0.05	21 1805 SCOTT ST. 0.12	56 103 E. DAVENPORT ST. 0.08

Properties Owned by SJC

Desired Property List Parcels

Pg. 7



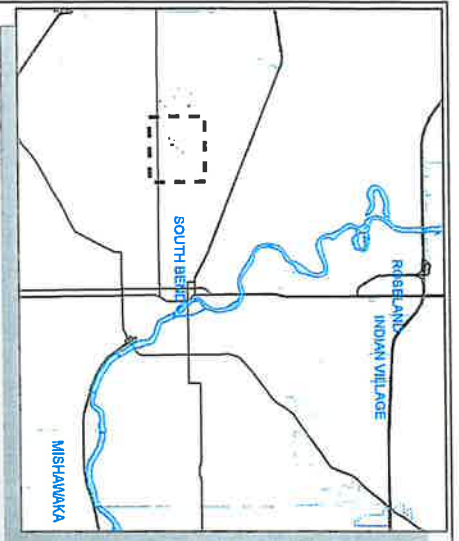
ADDRESS & ADDRESS

1 101 S. PARKWAY ST. 019	16 528 BRIDGE AVE. 016	36 1402 S. SCOTT ST. 012	44 3144 ROOSE ST. 024
2 101 S. PARKWAY ST. 019	17 1032 CHERRY ST. 011	37 1402 S. SCOTT ST. 012	45 3144 ROOSE ST. 024
3 101 S. PARKWAY ST. 019	18 1723 S. BRIDGE ST. 011	38 1402 S. SCOTT ST. 012	46 3144 ROOSE ST. 024
4 101 S. PARKWAY ST. 019	19 1723 S. BRIDGE ST. 011	39 1402 S. SCOTT ST. 012	47 3144 ROOSE ST. 024
5 101 S. PARKWAY ST. 019	20 1723 S. BRIDGE ST. 011	40 1402 S. SCOTT ST. 012	48 3144 ROOSE ST. 024
6 101 S. PARKWAY ST. 019	21 1723 S. BRIDGE ST. 011	41 1402 S. SCOTT ST. 012	49 3144 ROOSE ST. 024
7 101 S. PARKWAY ST. 019	22 200 S. COLMAN ST. 011	42 1402 S. SCOTT ST. 012	50 1707 KENDALL ST. 011
8 101 S. PARKWAY ST. 019	23 200 S. COLMAN ST. 011	43 1402 S. SCOTT ST. 012	51 1707 KENDALL ST. 011
9 101 S. PARKWAY ST. 019	24 200 S. COLMAN ST. 011	44 1402 S. SCOTT ST. 012	52 1707 KENDALL ST. 011
10 101 S. PARKWAY ST. 019	25 200 S. COLMAN ST. 011	45 1402 S. SCOTT ST. 012	53 1707 KENDALL ST. 011
11 101 S. PARKWAY ST. 019	26 200 S. COLMAN ST. 011	46 1402 S. SCOTT ST. 012	54 1707 KENDALL ST. 011
12 101 S. PARKWAY ST. 019	27 200 S. COLMAN ST. 011	47 1402 S. SCOTT ST. 012	55 1707 KENDALL ST. 011
13 101 S. PARKWAY ST. 019	28 200 S. COLMAN ST. 011	48 1402 S. SCOTT ST. 012	56 1707 KENDALL ST. 011
14 101 S. PARKWAY ST. 019	29 200 S. COLMAN ST. 011	49 1402 S. SCOTT ST. 012	57 1707 KENDALL ST. 011
15 101 S. PARKWAY ST. 019	30 200 S. COLMAN ST. 011	50 1402 S. SCOTT ST. 012	58 1707 KENDALL ST. 011
16 101 S. PARKWAY ST. 019	31 200 S. COLMAN ST. 011	51 1402 S. SCOTT ST. 012	59 1707 KENDALL ST. 011
17 101 S. PARKWAY ST. 019	32 200 S. COLMAN ST. 011	52 1402 S. SCOTT ST. 012	60 1707 KENDALL ST. 011
18 101 S. PARKWAY ST. 019	33 200 S. COLMAN ST. 011	53 1402 S. SCOTT ST. 012	61 1707 KENDALL ST. 011
19 101 S. PARKWAY ST. 019	34 200 S. COLMAN ST. 011	54 1402 S. SCOTT ST. 012	62 1707 KENDALL ST. 011
20 101 S. PARKWAY ST. 019	35 200 S. COLMAN ST. 011	55 1402 S. SCOTT ST. 012	63 1707 KENDALL ST. 011
21 101 S. PARKWAY ST. 019	36 200 S. COLMAN ST. 011	56 1402 S. SCOTT ST. 012	64 1707 KENDALL ST. 011
22 101 S. PARKWAY ST. 019	37 200 S. COLMAN ST. 011	57 1402 S. SCOTT ST. 012	65 1707 KENDALL ST. 011
23 101 S. PARKWAY ST. 019	38 200 S. COLMAN ST. 011	58 1402 S. SCOTT ST. 012	66 1707 KENDALL ST. 011
24 101 S. PARKWAY ST. 019	39 200 S. COLMAN ST. 011	59 1402 S. SCOTT ST. 012	67 1707 KENDALL ST. 011
25 101 S. PARKWAY ST. 019	40 200 S. COLMAN ST. 011	60 1402 S. SCOTT ST. 012	68 1707 KENDALL ST. 011
26 101 S. PARKWAY ST. 019	41 200 S. COLMAN ST. 011	61 1402 S. SCOTT ST. 012	69 1707 KENDALL ST. 011
27 101 S. PARKWAY ST. 019	42 200 S. COLMAN ST. 011	62 1402 S. SCOTT ST. 012	70 1707 KENDALL ST. 011
28 101 S. PARKWAY ST. 019	43 200 S. COLMAN ST. 011	63 1402 S. SCOTT ST. 012	71 1707 KENDALL ST. 011
29 101 S. PARKWAY ST. 019	44 200 S. COLMAN ST. 011	64 1402 S. SCOTT ST. 012	72 1707 KENDALL ST. 011
30 101 S. PARKWAY ST. 019	45 200 S. COLMAN ST. 011	65 1402 S. SCOTT ST. 012	73 1707 KENDALL ST. 011
31 101 S. PARKWAY ST. 019	46 200 S. COLMAN ST. 011	66 1402 S. SCOTT ST. 012	74 1707 KENDALL ST. 011
32 101 S. PARKWAY ST. 019	47 200 S. COLMAN ST. 011	67 1402 S. SCOTT ST. 012	75 1707 KENDALL ST. 011
33 101 S. PARKWAY ST. 019	48 200 S. COLMAN ST. 011	68 1402 S. SCOTT ST. 012	76 1707 KENDALL ST. 011
34 101 S. PARKWAY ST. 019	49 200 S. COLMAN ST. 011	69 1402 S. SCOTT ST. 012	77 1707 KENDALL ST. 011
35 101 S. PARKWAY ST. 019	50 200 S. COLMAN ST. 011	70 1402 S. SCOTT ST. 012	78 1707 KENDALL ST. 011
36 101 S. PARKWAY ST. 019	51 200 S. COLMAN ST. 011	71 1402 S. SCOTT ST. 012	79 1707 KENDALL ST. 011
37 101 S. PARKWAY ST. 019	52 200 S. COLMAN ST. 011	72 1402 S. SCOTT ST. 012	80 1707 KENDALL ST. 011
38 101 S. PARKWAY ST. 019	53 200 S. COLMAN ST. 011	73 1402 S. SCOTT ST. 012	81 1707 KENDALL ST. 011
39 101 S. PARKWAY ST. 019	54 200 S. COLMAN ST. 011	74 1402 S. SCOTT ST. 012	82 1707 KENDALL ST. 011
40 101 S. PARKWAY ST. 019	55 200 S. COLMAN ST. 011	75 1402 S. SCOTT ST. 012	83 1707 KENDALL ST. 011
41 101 S. PARKWAY ST. 019	56 200 S. COLMAN ST. 011	76 1402 S. SCOTT ST. 012	84 1707 KENDALL ST. 011
42 101 S. PARKWAY ST. 019	57 200 S. COLMAN ST. 011	77 1402 S. SCOTT ST. 012	85 1707 KENDALL ST. 011
43 101 S. PARKWAY ST. 019	58 200 S. COLMAN ST. 011	78 1402 S. SCOTT ST. 012	86 1707 KENDALL ST. 011
44 101 S. PARKWAY ST. 019	59 200 S. COLMAN ST. 011	79 1402 S. SCOTT ST. 012	87 1707 KENDALL ST. 011
45 101 S. PARKWAY ST. 019	60 200 S. COLMAN ST. 011	80 1402 S. SCOTT ST. 012	88 1707 KENDALL ST. 011

Properties Owned by SJC

Desired Property List Parcels

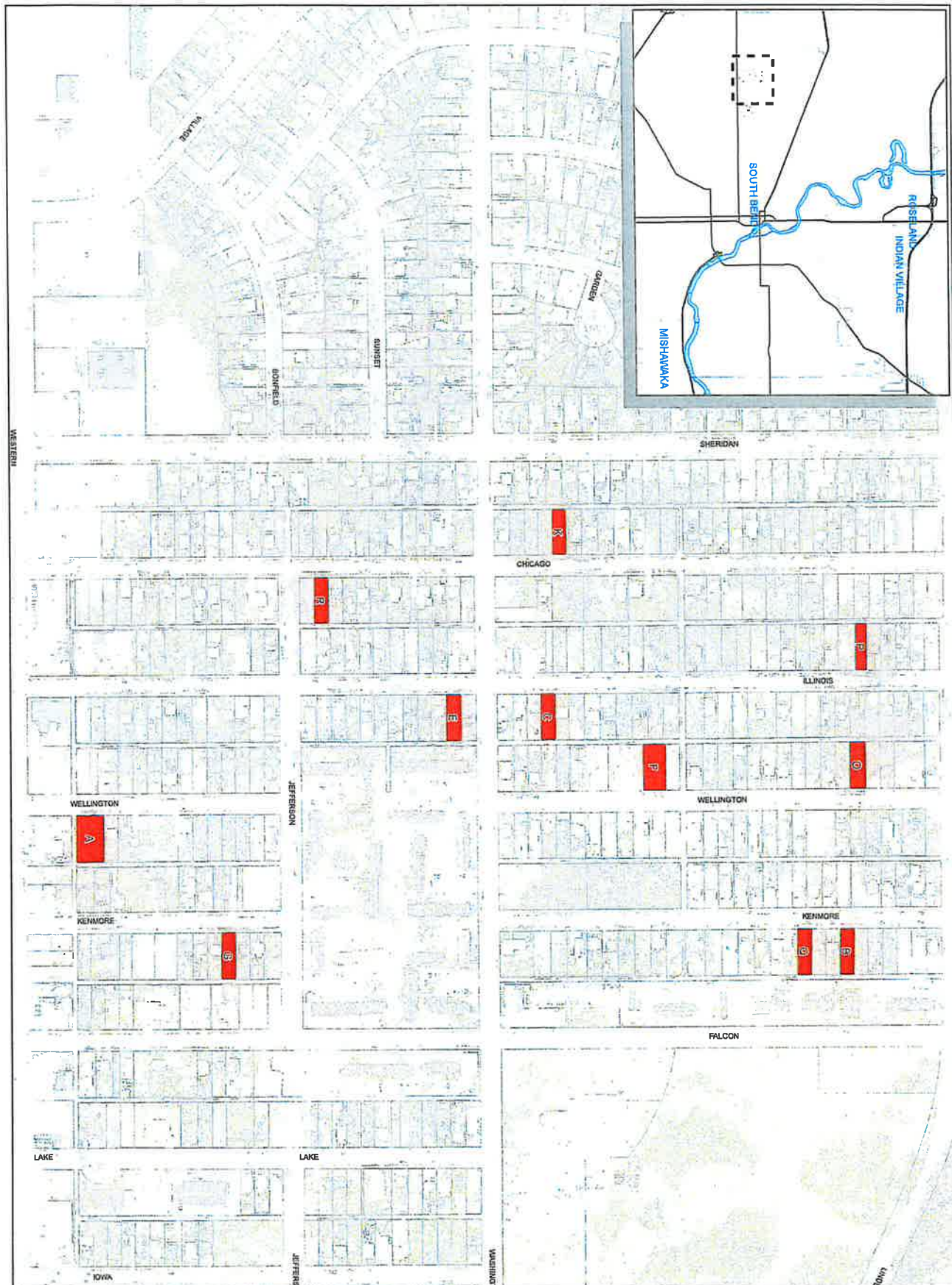
Pg. 6



- A. 326 S WELLINGTON ST
- B. 242 N KENMORE ST
- C. 114 N ILLINOIS ST
- D. 142 S LIBERTY ST
- E. 106 S ILLINOIS ST
- F. 129 N WELLINGTON ST
- G. 214 S KENMORE ST
- H. 206 S MEADE ST
- I. 129 S KALEY ST
- J. 117 S KALEY ST
- K. 117 N CHICAGO ST
- L. 2610 W COLFAX AVE
- M. 2637 W WASHINGTON ST
- N. 109 S BENDIX DR
- O. 246 N WELLINGTON ST
- P. 246 N ILLINOIS ST
- Q. 230 N KENMORE ST
- R. 142 S CHICAGO ST



Desired Properties



- A, 328 S WELLINGTON ST
- B, 242 N KENMORE ST
- C, 114 N ILLINOIS ST
- D, 142 S LIBERTY ST
- E, 106 S ILLINOIS ST
- F, 129 N WELLINGTON ST
- G, 214 S KENMORE ST
- H, 205 S MEADE ST
- I, 129 S KALEY ST
- J, 117 S KALEY ST
- K, 117 N CHICAGO ST
- L, 2610 W COLFAX AVE
- M, 2637 W WASHINGTON ST
- N, 109 S BENDIX DR
- O, 245 N WELLINGTON ST
- P, 246 N ILLINOIS ST
- Q, 230 N KENMORE ST
- R, 142 S CHICAGO ST



Desired Properties

**BOARD OF PUBLIC WORKS
AGENDA ITEM REVIEW REQUEST FORM**

Date	6/14/2024		
Name	Joseph Molnar	Department	DCI
BPW Date	June 25 2024	Phone Extension	6022

Review and Approval Required Prior to Submittal to Board

Diversity Compliance and Inclusion Officer	<input type="checkbox"/>	Officer Name	_____
BPW Attorney	<input type="checkbox"/>	Attorney Name	_____
Dept. Attorney	<input checked="" type="checkbox"/>	Attorney Name	Danielle Campbell Weiss
Purchasing	<input type="checkbox"/>	_____	_____

Check the Appropriate Item Type – Required for All Submissions

<input type="checkbox"/> Professional Services Agreement	<input type="checkbox"/> Contract	<input type="checkbox"/> Proposal	
<input type="checkbox"/> Open Market Contract	<input type="checkbox"/> Amendment/Addendum	<input type="checkbox"/> Special Purchase, QPA	
<input type="checkbox"/> Bid Opening	<input type="checkbox"/> Bid Award	<input type="checkbox"/> Req. to Advertise	<input type="checkbox"/> Title Sheet
<input type="checkbox"/> Quote Opening	<input type="checkbox"/> Quote Award	<input type="checkbox"/> Reject Bids/Quotes	
<input type="checkbox"/> Proposal Opening	<input type="checkbox"/> C/O & PCA No. _____	<input type="checkbox"/> PCA	
<input type="checkbox"/> Chg. Order, No. _____	<input type="checkbox"/> Traffic Control	<input checked="" type="checkbox"/> Resolution	
<input type="checkbox"/> Other:		<input type="checkbox"/> Ease./Encroach	

Required Information

Company or Vendor Name	St. Joseph County Board of Commissioners		
New Vendor	<input type="checkbox"/> Yes	<input type="checkbox"/> If Yes, Approved by Purchasing	
	<input type="checkbox"/> No		
MBE/WBE Contractor	<input type="checkbox"/> MBE	Completed E-Verify Form Attached	<input type="checkbox"/> Yes
	<input type="checkbox"/> WBE		<input type="checkbox"/> No
Project Name	Accepting the Assignment of Tax Sale Certificates from St. Joseph County		
Project Number	_____		
Funding Source	_____		
Account No.	_____		
Amount	_____		
Terms of Contract	_____		
Purpose/Description	In May, the BPW approved an MOU with St. Joseph County to begin the process to assume the tax certificates of 69 parcels on the tax sale list. This resolution confirms that assignment of tax certificates.		

For Change Orders Only

Amount of	<input type="checkbox"/>	Increase	\$ _____	
	<input type="checkbox"/>	Decrease	(\$ _____)	
Previous Amount			\$ _____	
		Increase	_____ %	
Current Percent of Change:		Decrease	(_____ %)	
New Amount			\$ _____	
		Increase	_____ %	
Total Percent of Change:		Decrease	(_____ %)	
Time Extension Amount:			_____	
New Completion Date:			_____	