

City of South Bend Lead Service Lines

October 9, 2023

Eric C. Horvath, P.E.
Director of Public Works
City of South Bend



City of South Bend
Indiana

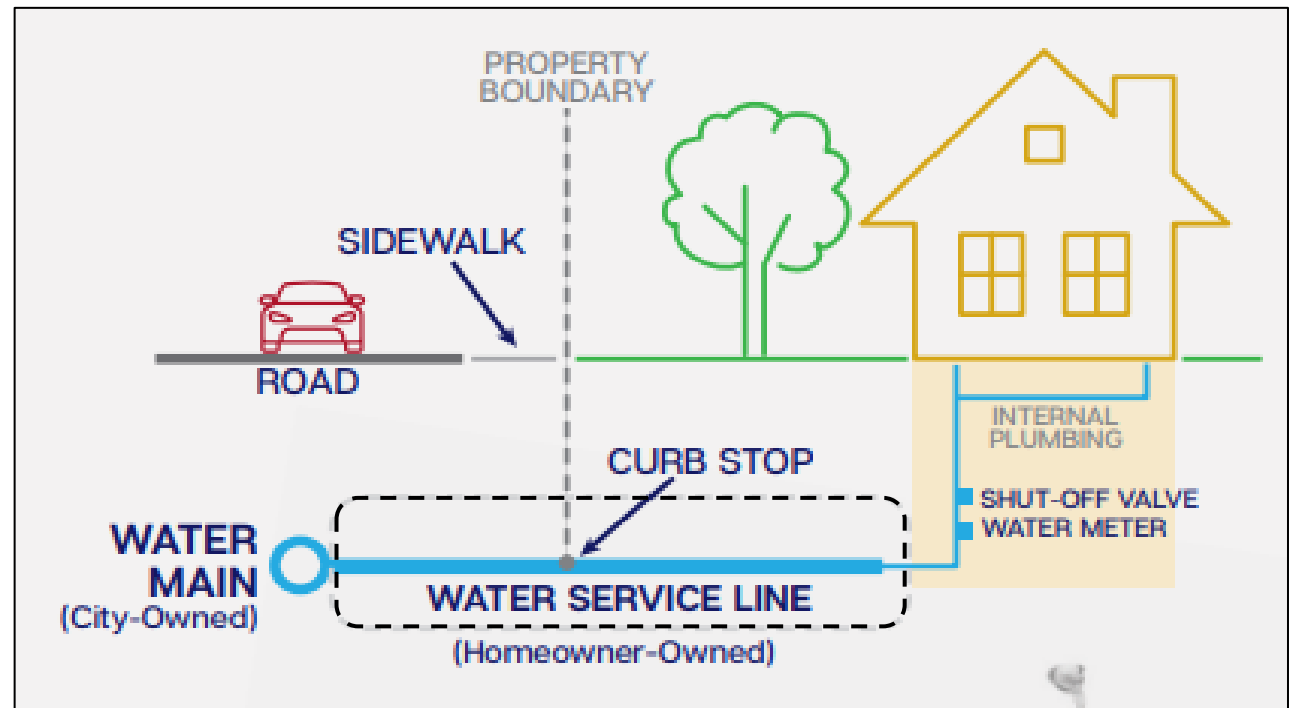
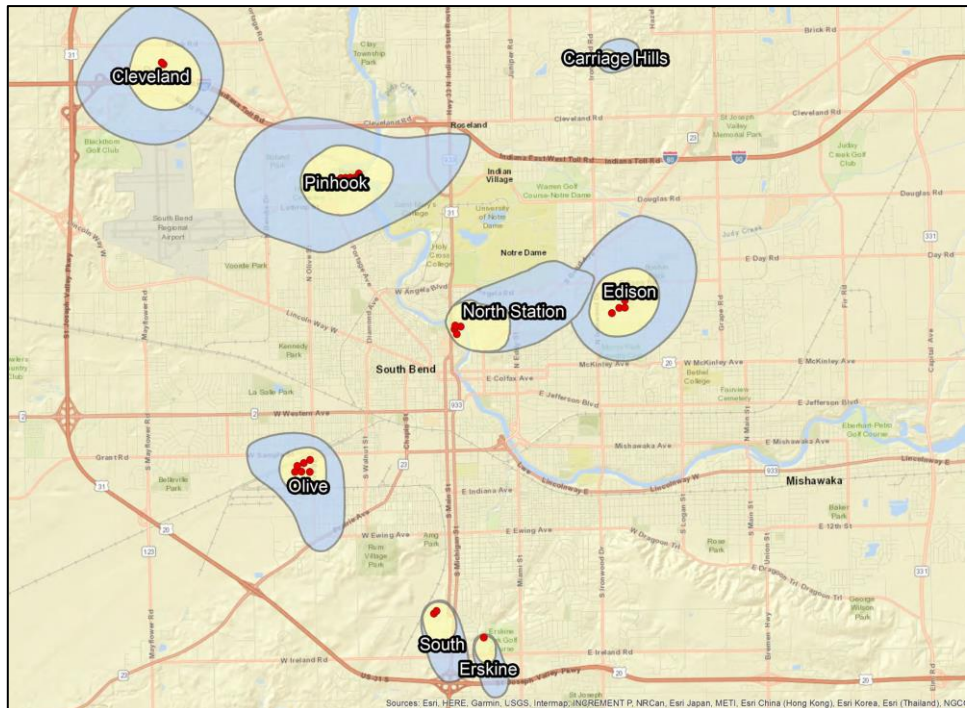
Water Infrastructure and Ownership

City-Owned

- Wells, Treatment Facilities and Watermains
- City water source is groundwater
- No lead watermains

Privately-Owned

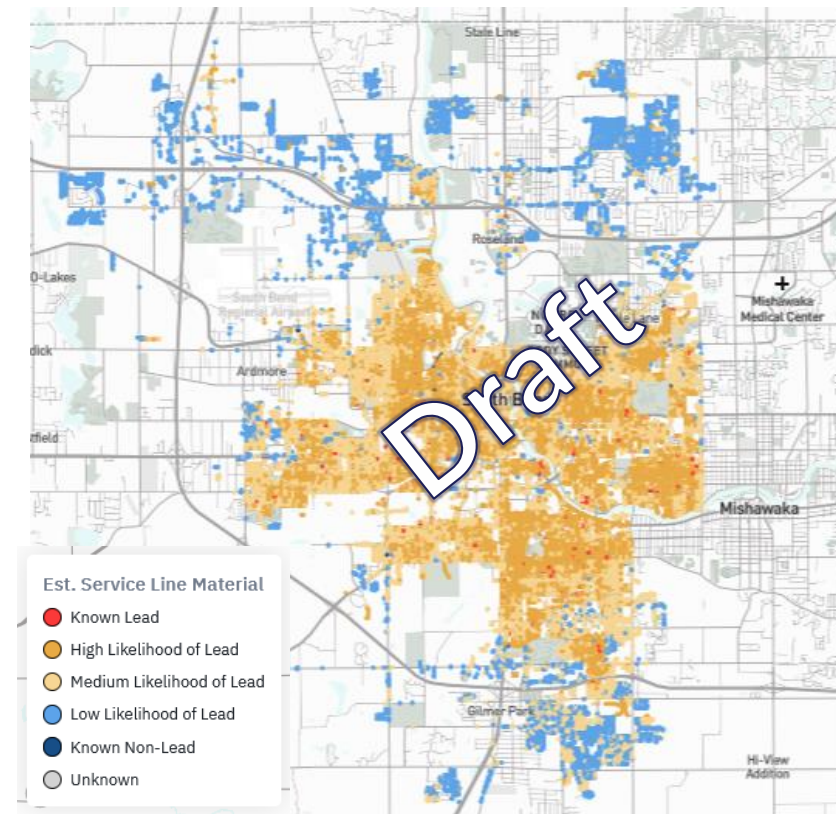
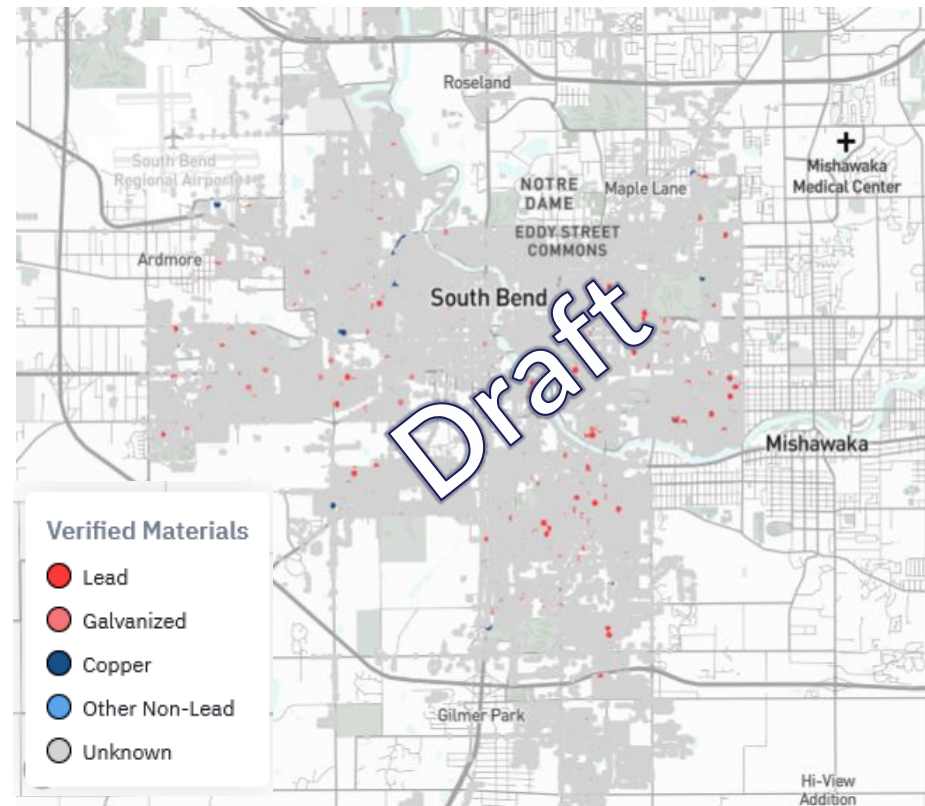
- Service lines run from watermains to internal building plumbing
- Service lines are entirely privately-owned



Service Line Inventory

Developed using:

- Plumbing records
- Water sampling results
- Tap cards
- Infrastructure improvements records
- As-builts
- Building age
- Watermain age
- Potholing
- In-house identification



Service Line Inventories are required to be made public by October 16, 2024 per the US Environmental Protection Agency Lead and Copper Rule Requirements



Service Line Identification – Potholing

- Also called hydro-excavation
- Performed in tree-lawn locations and restored after inspection
- Performed all throughout the City at locations selected that would best increase the inventory predictability model



Service Line Identification Self-Inspection

Inspection & Survey Steps:

1. Locate service line
2. Perform scratch test
3. Perform magnet test
4. Submit results

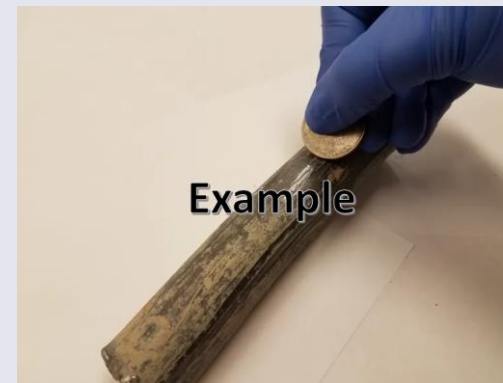


Copper – scratch is color of a penny and magnet does not stick



Galvanized – scratch is dull gray and a magnet sticks

Service Line Materials



Lead – scratch is shiny gray and magnet does not stick



Plastic – non-metallic and magnet does not stick



Water Sampling

- Free lead water sampling kits for City residents
- EPA action level for lead: **15 ppb** at the 90th percentile
- Steps taken when lead is found above 10 ppb in any sample:
 - Investigation of conditions and sampling procedures
 - Distribution of a free 6-month pitcher filter
 - Free resampling and follow-up
- In 2024, South Bend has budgeted \$50,000 for 1,500 pitcher filters
- Due to the City's water sampling results of the 90th percentile of lead being below the action limit (15 ppb), the City is not required to replace lead service lines.

Year	90 th Percentile Lead (ppb)
2022	4.1
2019	2.6
2016	4.5
2013	2.5
2010	3.7



Thank you!

Department of Public Works
Call 311 with questions

For Water Sampling Kits:
South Bend Municipal Utilities
waterquality@southbendin.gov



City of South Bend
Indiana

