



# CITY OF SOUTH BEND

## REDEVELOPMENT COMMISSION

---

### Redevelopment Commission Agenda Item

DATE: March 19, 2018

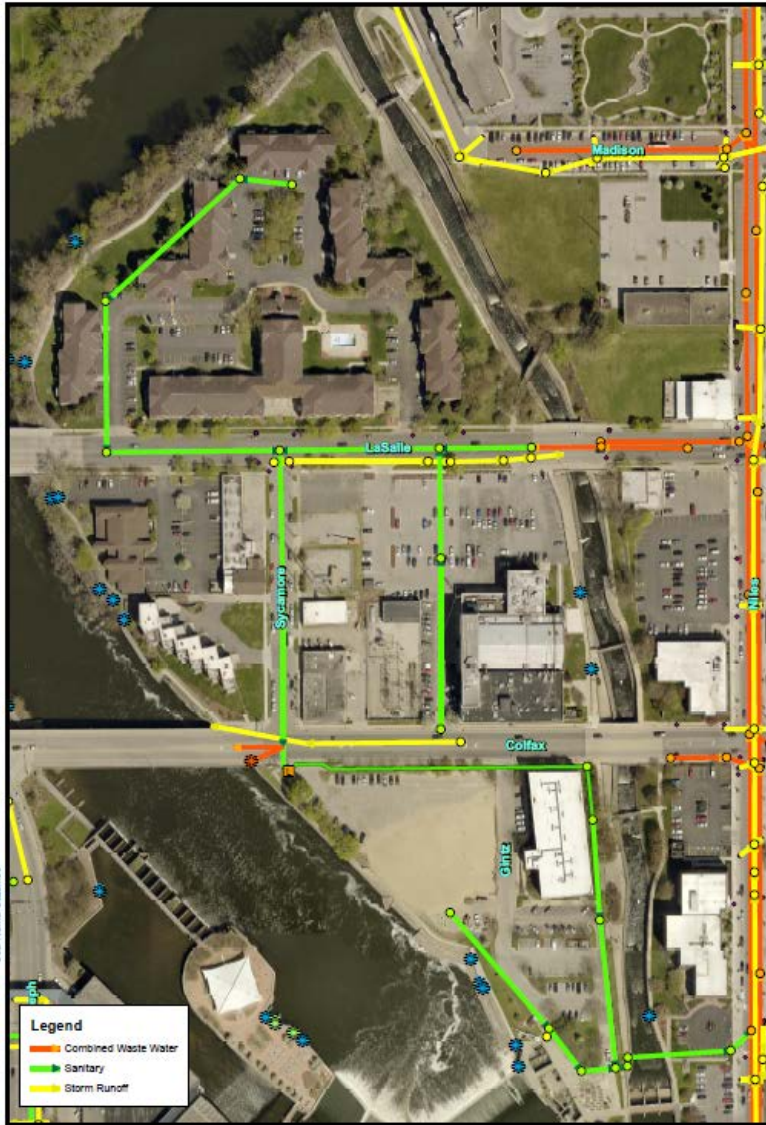
FROM: Kara Boyles, City Engineer

SUBJECT: Budget Request – East Race Sewer Analysis (Wharf/Commerce)

Which TIF? (circle one) River West; River East; South Side; Douglas Road; West Washington

PURPOSE OF REQUEST: Funding for professional engineering services in the amount of \$25,000.

Specifics: Perform a sewer system analysis on a portion of our existing sewer network – see the attached sewer shed map which describes the area. Multiple new developments are anticipated to connect to this existing network, yet the anticipated flows versus the available capacity are not well understood for this area. The Wharf Partners, The Commerce Development, and Seitz Park will be new users contributing to the sanitary that eventually dumps into the combined sewer along Niles Avenue. In order to ensure adequate infrastructure and available capacity for all users, we would like to engage a consulting engineer to study this area.



DP 17-101	 City of South Bend Dept. of Public Works 227 W Jefferson Blvd. #1018 South Bend, IN 46801 Phone: (674) 236-8261 Fax: (674) 236-9171	<b>East Race Sewershed Map</b>  South Bend, IN	
Figure 1			
3/5/2018			

INTERNAL USE ONLY: Project Code: \_\_\_\_\_;

Total Amount new/change (inc/dec) in budget: \$25,000; Break down:

Costs: Engineering Amt: \_\_\_\_\_; Other Prof Serv Amt \_\_\_\_\_;

Acquisition of Land/Bldg (circle one) Amt: \_\_\_\_\_; Street Const Amt \_\_\_\_\_;

Building Imp Amt \_\_\_\_\_; Sewers Amt \_\_\_\_\_; Other (specify) Amt: \_\_\_\_\_

\_\_\_\_\_ Going to BPW for Contracting? Y/N

Is this item ready to encumber now? \_\_\_\_ Existing PO# \_\_\_\_\_ Inc/Dec \$ \_\_\_\_\_