



**Period Ending: September 30, 2016**

**Issued By: Controller**

# **City of South Bend**

## **Century Center Bank Account Cash Summary**

<b>Page Numbers</b>	<b>Contents</b>
2-9	Cash Summary Detail
10	Cash Summary - Bar Chart Trends
11	Cash Summary - Line Chart Trends
12	Cash Summary - Bar Chart - September 30, 2007 to September 30, 2016

### **Distribution**

Century Center Board of Managers  
Century Center Management  
Mayor *Pete Buttigieg*  
Chief of Staff *James Mueller*  
Deputy Chief of Staff *Suzanna Fritzberg*  
City Controller *John Murphy*  
Deputy City Controller *Jennifer Hockenhill*  
City Finance Director *Rahman Johnson*  
Sr. Budget Analyst *Amy O'Connor*

**Century Center Bank Statement Cash Summary**  
**September 30, 2006 through September 30, 2016**  
**Updated - October 5, 2016**

Month	Key Bank Capital Account	Key Bank Operating (1) Account	Key Bank A/P - Payroll Account	Key Bank Event Account	Key Bank Energy Bond (4) Account	Certificate of Deposit Capital	Old National Loan	Net	Notes
<b>Ending Balance - September 30, 2006</b>	<b>\$165,398.35</b>	<b>\$276,400.17</b>	<b>\$61,104.48</b>	<b>\$14,869.85</b>	<b>\$0.00</b>	<b>\$1,036,692.21</b>	<b>(\$460,500.00)</b>	<b>\$1,093,965.06</b>	Key Bank CD \$1,036,692.21
Receipts	60.28	171,258.11	300,000.00	6,140.00	0.00	0.00	0.00	477,458.39	
Disbursements	<u>0.00</u>	<u>(300,316.85)</u>	<u>(254,091.79)</u>	<u>(17,003.50)</u>	<u>0.00</u>	<u>0.00</u>	<u>0.00</u>	<u>(571,412.14)</u>	
<b>Ending Balance - October 31, 2006</b>	<b>165,458.63</b>	<b>147,341.43</b>	<b>107,012.69</b>	<b>4,006.35</b>	<b>0.00</b>	<b>1,036,692.21</b>	<b>(460,500.00)</b>	<b>1,000,011.31</b>	
Receipts	54.40	180,752.84	250,000.00	3,840.00	0.00	0.00	0.00	434,647.24	
Disbursements	<u>0.00</u>	<u>(251,436.91)</u>	<u>(201,234.53)</u>	<u>(6.28)</u>	<u>0.00</u>	<u>0.00</u>	<u>17,875.00</u>	<u>(434,802.72)</u>	
<b>Ending Balance - November 30, 2006</b>	<b>165,513.03</b>	<b>76,657.36</b>	<b>155,778.16</b>	<b>7,840.07</b>	<b>0.00</b>	<b>1,036,692.21</b>	<b>(442,625.00)</b>	<b>999,855.83</b>	
Receipts	100,079.26	245,169.61	250,000.00	17,280.00	0.00	0.00	0.00	612,528.87	\$100,000 PSDA Fund 377 2006
Disbursements	<u>0.00</u>	<u>(300,126.17)</u>	<u>(379,053.86)</u>	<u>(20,009.19)</u>	<u>0.00</u>	<u>0.00</u>	<u>0.00</u>	<u>(699,189.22)</u>	
<b>Ending Balance - December 31, 2006</b>	<b>265,592.29</b>	<b>21,700.80</b>	<b>26,724.30</b>	<b>5,110.88</b>	<b>0.00</b>	<b>1,036,692.21</b>	<b>(442,625.00)</b>	<b>913,195.48</b>	
Receipts	90.24	833,624.36	200,000.00	5,260.00	0.00	0.00	0.00	1,038,974.60	
Disbursements	<u>0.00</u>	<u>(100,083.35)</u>	<u>(165,721.66)</u>	<u>(3.44)</u>	<u>0.00</u>	<u>0.00</u>	<u>0.00</u>	<u>(265,808.45)</u>	
<b>Ending Balance - January 31, 2007</b>	<b>265,682.53</b>	<b>755,241.81</b>	<b>61,002.64</b>	<b>10,367.44</b>	<b>0.00</b>	<b>1,036,692.21</b>	<b>(442,625.00)</b>	<b>1,686,361.63</b>	
Receipts	81.54	203,966.17	250,000.00	14,960.00	0.00	0.00	0.00	469,007.71	
Disbursements	<u>0.00</u>	<u>(201,074.63)</u>	<u>(206,130.22)</u>	<u>(14,004.29)</u>	<u>0.00</u>	<u>0.00</u>	<u>17,875.00</u>	<u>(403,334.14)</u>	
<b>Ending Balance - February 28, 2007</b>	<b>265,764.07</b>	<b>758,133.35</b>	<b>104,872.42</b>	<b>11,323.15</b>	<b>0.00</b>	<b>1,036,692.21</b>	<b>(424,750.00)</b>	<b>1,752,035.20</b>	
Receipts	90.30	106,391.23	225,000.00	7,640.00	0.00	0.00	0.00	339,121.53	
Disbursements	<u>0.00</u>	<u>(297,852.43)</u>	<u>(222,892.18)</u>	<u>0.00</u>	<u>0.00</u>	<u>0.00</u>	<u>0.00</u>	<u>(520,744.61)</u>	
<b>Ending Balance - March 31, 2007</b>	<b>265,854.37</b>	<b>566,672.15</b>	<b>106,980.24</b>	<b>18,963.15</b>	<b>0.00</b>	<b>1,036,692.21</b>	<b>(424,750.00)</b>	<b>1,570,412.12</b>	
Receipts	87.42	154,893.81	325,343.53	0.00	0.00	0.00	0.00	480,324.76	
Disbursements	<u>0.00</u>	<u>(375,681.54)</u>	<u>(319,596.54)</u>	<u>0.00</u>	<u>0.00</u>	<u>0.00</u>	<u>0.00</u>	<u>(695,278.08)</u>	
<b>Ending Balance - April 30, 2007</b>	<b>265,941.79</b>	<b>345,884.42</b>	<b>112,727.23</b>	<b>18,963.15</b>	<b>0.00</b>	<b>1,036,692.21</b>	<b>(424,750.00)</b>	<b>1,355,458.80</b>	
Receipts	302,012.32	157,100.11	175,000.00	0.00	0.00	0.00	0.00	634,112.43	\$300,000 Center Plate
Disbursements	<u>0.00</u>	<u>(300,301.48)</u>	<u>(251,397.99)</u>	<u>0.00</u>	<u>0.00</u>	<u>0.00</u>	<u>17,875.00</u>	<u>(533,824.47)</u>	
<b>Ending Balance - May 31, 2007</b>	<b>567,954.11</b>	<b>202,683.05</b>	<b>36,329.24</b>	<b>18,963.15</b>	<b>0.00</b>	<b>1,036,692.21</b>	<b>(406,875.00)</b>	<b>1,455,746.76</b>	
Receipts	2,052.88	258,319.99	235,000.00	0.00	0.00	0.00	0.00	495,372.87	
Disbursements	<u>0.00</u>	<u>(175,451.80)</u>	<u>(222,927.07)</u>	<u>0.00</u>	<u>0.00</u>	<u>0.00</u>	<u>0.00</u>	<u>(398,378.87)</u>	
<b>Ending Balance - June 30, 2007</b>	<b>570,006.99</b>	<b>285,551.24</b>	<b>48,402.17</b>	<b>18,963.15</b>	<b>0.00</b>	<b>1,036,692.21</b>	<b>(406,875.00)</b>	<b>1,552,740.76</b>	
Receipts	2,129.11	894,611.53	250,512.40	0.00	0.00	0.00	0.00	1,147,253.04	
Disbursements	<u>0.00</u>	<u>(360,506.98)</u>	<u>(263,607.64)</u>	<u>0.00</u>	<u>0.00</u>	<u>0.00</u>	<u>17,875.00</u>	<u>(606,239.62)</u>	
<b>Ending Balance - July 31, 2007</b>	<b>572,136.10</b>	<b>819,655.79</b>	<b>35,306.93</b>	<b>18,963.15</b>	<b>0.00</b>	<b>1,036,692.21</b>	<b>(389,000.00)</b>	<b>2,093,754.18</b>	
Receipts	2,137.06	127,461.17	326,366.73	0.00	0.00	0.00	0.00	455,964.96	
Disbursements	<u>0.00</u>	<u>(326,326.45)</u>	<u>(277,937.15)</u>	<u>0.00</u>	<u>0.00</u>	<u>0.00</u>	<u>0.00</u>	<u>(604,263.60)</u>	
<b>Ending Balance - August 31, 2007</b>	<b>574,273.16</b>	<b>620,790.51</b>	<b>83,736.51</b>	<b>18,963.15</b>	<b>0.00</b>	<b>1,036,692.21</b>	<b>(389,000.00)</b>	<b>1,945,455.54</b>	
Receipts	2,006.36	242,924.75	262,000.00	0.00	0.00	0.00	0.00	506,931.11	
Disbursements	<u>0.00</u>	<u>(262,541.70)</u>	<u>(282,765.77)</u>	<u>(4.78)</u>	<u>0.00</u>	<u>0.00</u>	<u>0.00</u>	<u>(545,312.25)</u>	
<b>Ending Balance - September 30, 2007</b>	<b>576,279.52</b>	<b>601,173.56</b>	<b>62,970.74</b>	<b>18,958.37</b>	<b>0.00</b>	<b>1,036,692.21</b>	<b>(389,000.00)</b>	<b>1,907,074.40</b>	
Receipts	102,183.73	123,262.63	270,318.50	35,112.90	0.00	11,674.13	0.00	542,551.89	\$100,000 PSDA Fund 377 2007
Investment Transfers	0.00	0.00	1,044,101.45	0.00	0.00	0.00	0.00	1,044,101.45	Key Bank CD \$1,044,101.45
Investment Transfers	1,048,366.34	(270,265.24)	(1,044,101.45)	0.00	0.00	(1,048,366.34)	0.00	(1,314,366.69)	
Disbursements	<u>0.00</u>	<u>0.00</u>	<u>(292,668.17)</u>	<u>(40.49)</u>	<u>0.00</u>	<u>0.00</u>	<u>0.00</u>	<u>(292,708.66)</u>	
<b>Ending Balance - October 31, 2007</b>	<b>1,726,829.59</b>	<b>454,170.95</b>	<b>40,621.07</b>	<b>54,030.78</b>	<b>0.00</b>	<b>0.00</b>	<b>(389,000.00)</b>	<b>1,886,652.39</b>	
Receipts	2,939.77	167,386.49	261,000.00	23,417.40	0.00	0.00	0.00	454,743.66	
Investment Transfers	(1,100,000.00)	(261,578.41)	0.00	0.00	0.00	1,100,000.00	0.00	(261,578.41)	Horizon CD \$1,100,000.00
Disbursements	<u>0.00</u>	<u>0.00</u>	<u>(234,437.82)</u>	<u>0.00</u>	<u>0.00</u>	<u>0.00</u>	<u>17,875.00</u>	<u>(216,562.82)</u>	
<b>Ending Balance - November 30, 2007</b>	<b>629,769.36</b>	<b>359,979.03</b>	<b>67,183.25</b>	<b>77,448.18</b>	<b>0.00</b>	<b>1,100,000.00</b>	<b>(371,125.00)</b>	<b>1,863,254.82</b>	
Receipts	12,080.28	184,489.44	205,000.00	11,525.30	0.00	0.00	0.00	413,095.02	
Disbursements	<u>(664.37)</u>	<u>(205,461.54)</u>	<u>(237,033.27)</u>	<u>0.00</u>	<u>0.00</u>	<u>0.00</u>	<u>0.00</u>	<u>(443,159.18)</u>	
<b>Ending Balance - December 31, 2007</b>	<b>641,185.27</b>	<b>339,006.93</b>	<b>35,149.98</b>	<b>88,973.48</b>	<b>0.00</b>	<b>1,100,000.00</b>	<b>(371,125.00)</b>	<b>1,833,190.66</b>	
Receipts	2,166.80	900,191.68	443,740.82	20,197.50	0.00	0.00	0.00	1,366,296.80	Hotel/Motel Tax - \$748,695
Disbursements	<u>(41,347.52)</u>	<u>(403,043.27)</u>	<u>(424,469.01)</u>	<u>0.00</u>	<u>0.00</u>	<u>0.00</u>	<u>17,875.00</u>	<u>(850,984.80)</u>	\$40,740.82 capital transfer
<b>Ending Balance - January 31, 2008</b>	<b>602,004.55</b>	<b>836,155.34</b>	<b>54,421.79</b>	<b>109,170.98</b>	<b>0.00</b>	<b>1,100,000.00</b>	<b>(353,250.00)</b>	<b>2,348,502.66</b>	1st Source CD - \$1,100,000 - 2/6/08 - 3.00%

**Century Center Bank Statement Cash Summary**  
**September 30, 2006 through September 30, 2016**  
**Updated - October 5, 2016**

Month	Key Bank Capital Account	Key Bank Operating (1) Account	Key Bank A/P - Payroll Account	Key Bank Event Account	Key Bank Energy Bond (4) Account	Certificate of Deposit Capital	Old National Loan	Net	Notes
Receipts	14,530.36	52,843.23	265,000.00	40,438.15	0.00	0.00	0.00	372,811.74	
Disbursements	(447.00)	(265,466.76)	(205,035.48)	0.00	0.00	0.00	0.00	(470,949.24)	
<b>Ending Balance - February 29, 2008</b>	<b>616,087.91</b>	<b>623,531.81</b>	<b>114,386.31</b>	<b>149,609.13</b>	<b>0.00</b>	<b>1,100,000.00</b>	<b>(353,250.00)</b>	<b>2,250,365.16</b>	
Receipts	13,573.68	94,605.35	238,000.00	11,246.70	0.00	0.00	0.00	357,425.73	Capital - IRS Refund \$12,489.00
Transfers (2)	(210,000.00)	(10,000.00)	220,000.00	0.00	0.00	0.00	0.00	0.00	Transfers - reversed in April, 2008
Disbursements	0.00	(18,380.17)	(315,114.71)	0.00	0.00	0.00	0.00	(333,494.88)	
<b>Ending Balance - March 31, 2008</b>	<b>419,661.59</b>	<b>689,756.99</b>	<b>257,271.60</b>	<b>160,855.83</b>	<b>0.00</b>	<b>1,100,000.00</b>	<b>(353,250.00)</b>	<b>2,274,296.01</b>	
Receipts	8,497.67	165,321.94	311,356.47	27,327.20	0.00	0.00	0.00	512,503.28	
Transfers - Correction (2)	210,000.00	10,000.00	(220,000.00)	0.00	0.00	0.00	0.00	0.00	Correction of March transfer
Disbursements	(28,011.54)	(486,818.77)	(309,048.09)	(6,714.63)	0.00	0.00	17,875.00	(812,718.03)	\$28,011.54 capital expenditures approved
<b>Ending Balance - April 30, 2008</b>	<b>610,147.72</b>	<b>378,260.16</b>	<b>39,579.98</b>	<b>181,468.40</b>	<b>0.00</b>	<b>1,100,000.00</b>	<b>(335,375.00)</b>	<b>1,974,081.26</b>	
Receipts	1,024.08	120,875.07	212,000.00	23,508.45	0.00	0.00	0.00	357,407.60	
Disbursements	0.00	(213,314.67)	(223,602.47)	(24,349.20)	0.00	0.00	0.00	(461,266.34)	
<b>Ending Balance - May 31, 2008</b>	<b>611,171.80</b>	<b>285,820.56</b>	<b>27,977.51</b>	<b>180,627.65</b>	<b>0.00</b>	<b>1,100,000.00</b>	<b>(335,375.00)</b>	<b>1,870,222.52</b>	
Receipts	1,770.34	215,496.95	311,617.65	15,706.20	0.00	0.00	0.00	544,591.14	
Disbursements	(68,617.65)	(244,802.41)	(329,142.18)	(53,623.35)	0.00	0.00	0.00	(696,185.59)	\$68,617.65 capital expenditures approved
<b>Ending Balance - June 30, 2008</b>	<b>544,324.49</b>	<b>256,515.10</b>	<b>10,452.98</b>	<b>142,710.50</b>	<b>0.00</b>	<b>1,100,000.00</b>	<b>(335,375.00)</b>	<b>1,718,628.07</b>	
Receipts	2,144.71	868,146.31	400,000.00	29,762.40	0.00	0.00	0.00	1,300,053.42	Hotel/Motel Tax - \$748,695
Disbursements	0.00	(400,241.67)	(366,533.00)	(17,118.70)	0.00	0.00	17,875.00	(766,018.37)	
<b>Ending Balance - July 31, 2008</b>	<b>546,469.20</b>	<b>724,419.74</b>	<b>43,919.98</b>	<b>155,354.20</b>	<b>0.00</b>	<b>1,100,000.00</b>	<b>(317,500.00)</b>	<b>2,252,663.12</b>	
Receipts	3,472.76	125,562.52	185,000.00	8,968.70	0.00	0.00	0.00	323,003.98	
Disbursements	0.00	(185,491.70)	(214,917.14)	(30,146.15)	0.00	0.00	0.00	(430,554.99)	
<b>Ending Balance - August 31, 2008</b>	<b>549,941.96</b>	<b>664,490.56</b>	<b>14,002.84</b>	<b>134,176.75</b>	<b>0.00</b>	<b>1,100,000.00</b>	<b>(317,500.00)</b>	<b>2,145,112.11</b>	
Receipts	834.66	148,171.26	362,535.70	45,602.00	0.00	0.00	0.00	557,143.62	
Disbursements	(53,535.78)	(309,261.13)	(349,229.46)	(460.00)	0.00	0.00	0.00	(712,486.37)	\$53,535.78 capital expenditures approved
<b>Ending Balance - September 30, 2008</b>	<b>497,240.84</b>	<b>503,400.69</b>	<b>27,309.08</b>	<b>179,318.75</b>	<b>0.00</b>	<b>1,100,000.00</b>	<b>(317,500.00)</b>	<b>1,989,769.36</b>	
Receipts	2,927.32	236,872.73	288,000.08	30,218.90	0.00	0.00	0.00	558,019.03	
Disbursements	0.00	(289,939.90)	(282,452.66)	(91,368.80)	0.00	0.00	17,875.00	(645,886.36)	
<b>Ending Balance - October 31, 2008</b>	<b>500,168.16</b>	<b>450,333.52</b>	<b>32,856.50</b>	<b>118,168.85</b>	<b>0.00</b>	<b>1,100,000.00</b>	<b>(299,625.00)</b>	<b>1,901,902.03</b>	
Receipts	100,528.17	206,151.16	304,100.55	26,576.25	0.00	0.00	0.00	637,356.13	2008 PSDA - \$100,000 to Capital Account
Disbursements	(78,100.55)	(227,829.62)	(324,888.93)	(5,691.90)	0.00	0.00	0.00	(636,511.00)	
<b>Ending Balance - November 30, 2008</b>	<b>522,595.78</b>	<b>428,655.06</b>	<b>12,068.12</b>	<b>139,053.20</b>	<b>0.00</b>	<b>1,100,000.00</b>	<b>(299,625.00)</b>	<b>1,902,747.16</b>	
Receipts	7,316.14	181,691.28	302,000.00	34,830.20	0.00	0.00	0.00	525,837.62	
Disbursements	0.00	(303,937.55)	(270,853.18)	(18,162.25)	0.00	0.00	0.00	(592,952.98)	
<b>Ending Balance - December 31, 2008</b>	<b>529,911.92</b>	<b>306,408.79</b>	<b>43,214.94</b>	<b>155,721.15</b>	<b>0.00</b>	<b>1,100,000.00</b>	<b>(299,625.00)</b>	<b>1,835,631.80</b>	
Receipts	5,070.16	799,829.07	214,000.00	38,901.25	0.00	0.00	17,875.00	1,075,675.48	\$672,825.50 Hotel/Motel Tax Receipt
Disbursements	0.00	(219,083.50)	(242,544.92)	(12,573.10)	0.00	0.00	0.00	(474,201.52)	
<b>Ending Balance - January 31, 2009</b>	<b>534,982.08</b>	<b>887,154.36</b>	<b>14,670.02</b>	<b>182,049.30</b>	<b>0.00</b>	<b>1,100,000.00</b>	<b>(281,750.00)</b>	<b>2,437,105.76</b>	
Receipts	200.98	89,255.74	261,171.50	28,603.45	0.00	0.00	0.00	379,231.67	
Disbursements	(19,171.50)	(242,650.16)	(206,458.94)	(38,158.30)	0.00	0.00	0.00	(506,438.90)	\$19,171.50 capital expenditures approved
<b>Ending Balance - February 28, 2009</b>	<b>516,011.56</b>	<b>733,759.94</b>	<b>69,382.58</b>	<b>172,494.45</b>	<b>0.00</b>	<b>1,100,000.00</b>	<b>(281,750.00)</b>	<b>2,309,898.53</b>	
Receipts	146.15	110,657.99	219,150.00	47,424.19	0.00	0.00	0.00	377,378.33	
Disbursements	0.00	(220,996.87)	(273,203.76)	(31,295.39)	0.00	0.00	0.00	(525,496.02)	
<b>Ending Balance - March 31, 2009</b>	<b>516,157.71</b>	<b>623,421.06</b>	<b>15,328.82</b>	<b>188,623.25</b>	<b>0.00</b>	<b>1,100,000.00</b>	<b>(281,750.00)</b>	<b>2,161,780.84</b>	
Receipts	1,160.14	181,943.23	232,000.00	33,953.99	0.00	0.00	0.00	449,057.36	
Disbursements	0.00	(232,797.68)	(232,637.50)	(76,484.45)	0.00	0.00	17,875.00	(524,044.63)	
<b>Ending Balance - April 30, 2009</b>	<b>517,317.85</b>	<b>572,566.61</b>	<b>14,691.32</b>	<b>146,092.79</b>	<b>0.00</b>	<b>1,100,000.00</b>	<b>(263,875.00)</b>	<b>2,086,793.57</b>	
Receipts	4,470.41	120,500.63	214,000.00	32,573.95	0.00	0.00	0.00	371,544.99	
Disbursements	0.00	(214,534.50)	(200,700.91)	(51,069.29)	0.00	0.00	0.00	(466,304.70)	
<b>Ending Balance - May 31, 2009</b>	<b>521,788.26</b>	<b>478,532.74</b>	<b>27,990.41</b>	<b>127,597.45</b>	<b>0.00</b>	<b>1,100,000.00</b>	<b>(263,875.00)</b>	<b>1,992,033.86</b>	

**Century Center Bank Statement Cash Summary**  
**September 30, 2006 through September 30, 2016**  
**Updated - October 5, 2016**

Month	Key Bank Capital Account	Key Bank Operating (1) Account	Key Bank A/P - Payroll Account	Key Bank Event Account	Key Bank Energy Bond (4) Account	Certificate of Deposit Capital	Old National Loan	Net	Notes
Receipts	107.23	838,011.57	198,000.00	11,305.35	0.00	0.00	0.00	1,047,424.15	\$672,825.50 Hotel/Motel Tax Receipt
Disbursements	0.00	(198,094.97)	(205,067.55)	(48,984.70)	0.00	0.00	0.00	(452,147.22)	
<b>Ending Balance - June 30, 2009</b>	<b>521,895.49</b>	<b>1,118,449.34</b>	<b>20,922.86</b>	<b>89,918.10</b>	<b>0.00</b>	<b>1,100,000.00</b>	<b>(263,875.00)</b>	<b>2,587,310.79</b>	
Receipts	818.49	107,274.56	266,000.00	12,923.50	0.00	0.00	0.00	387,016.55	
Disbursements	(15.00)	(266,401.35)	(269,480.09)	(14,642.10)	0.00	0.00	17,875.00	(532,663.54)	
<b>Ending Balance - July 31, 2009</b>	<b>522,698.98</b>	<b>959,322.55</b>	<b>17,442.77</b>	<b>88,199.50</b>	<b>0.00</b>	<b>1,100,000.00</b>	<b>(246,000.00)</b>	<b>2,441,663.80</b>	
Receipts	100,336.88	163,609.70	206,000.00	5,405.60	0.00	0.00	0.00	475,352.18	2009 PSDA - \$100,000 to Capital Account
Disbursements	0.00	(306,188.77)	(173,884.21)	(5,603.50)	0.00	0.00	0.00	(485,676.48)	
<b>Ending Balance - August 31, 2009</b>	<b>623,035.86</b>	<b>816,743.48</b>	<b>49,558.56</b>	<b>88,001.60</b>	<b>0.00</b>	<b>1,100,000.00</b>	<b>(246,000.00)</b>	<b>2,431,339.50</b>	
Receipts	128.03	95,099.71	215,000.00	16,372.78	0.00	0.00	0.00	326,600.52	
Disbursements	0.00	(215,715.07)	(228,978.30)	(24,674.50)	0.00	0.00	0.00	(469,367.87)	
<b>Ending Balance - September 30, 2009</b>	<b>623,163.89</b>	<b>696,128.12</b>	<b>35,580.26</b>	<b>79,699.88</b>	<b>0.00</b>	<b>1,100,000.00</b>	<b>(246,000.00)</b>	<b>2,288,572.15</b>	
Receipts	57,523.63	107,260.11	299,000.00	20,296.50	0.00	0.00	0.00	484,080.24	Capital Account - \$53,875 CD's redeemed and
Disbursements	(53,976.75)	(299,998.96)	(316,787.74)	0.00	0.00	0.00	17,875.00	(652,888.45)	reinvested
<b>Ending Balance - October 31, 2009</b>	<b>626,710.77</b>	<b>503,389.27</b>	<b>17,792.52</b>	<b>99,996.38</b>	<b>0.00</b>	<b>1,100,000.00</b>	<b>(228,125.00)</b>	<b>2,119,763.94</b>	
Receipts	303,664.11	141,350.41	212,000.00	24,936.76	0.00	0.00	0.00	681,951.28	
Disbursements	(300,000.00)	(212,577.28)	(189,068.36)	0.00	0.00	0.00	0.00	(701,645.64)	\$300,000 capital CD redeemed & reinvested
<b>Ending Balance - November 30, 2009</b>	<b>630,374.88</b>	<b>432,162.40</b>	<b>40,724.16</b>	<b>124,933.14</b>	<b>0.00</b>	<b>1,100,000.00</b>	<b>(228,125.00)</b>	<b>2,100,069.58</b>	
Receipts	24.66	183,157.13	267,449.14	8,272.60	0.00	0.00	0.00	458,903.53	
Investment Transfers	(200,000.00)	0.00	0.00	0.00	0.00	200,000.00	0.00	0.00	\$200,000 transferred to 1st Source CD
Disbursements	(32,481.04)	(235,780.68)	(284,351.55)	(24,495.19)	0.00	0.00	0.00	(577,108.46)	
<b>Ending Balance - December 31, 2009</b>	<b>397,918.50</b>	<b>379,538.85</b>	<b>23,821.75</b>	<b>108,710.55</b>	<b>0.00</b>	<b>1,300,000.00</b>	<b>(228,125.00)</b>	<b>1,981,864.65</b>	
Receipts	2,784.66	764,226.99	250,268.80	39,036.30	0.00	0.00	0.00	1,056,316.75	Hotel/Motel Tax - \$656,576.00
Disbursements	(33,273.30)	(218,206.45)	(247,022.60)	(14,007.19)	0.00	0.00	17,875.00	(494,634.54)	\$33,268.80 - Capital Transfer
<b>Ending Balance - January 31, 2010</b>	<b>367,429.86</b>	<b>925,559.39</b>	<b>27,067.95</b>	<b>133,739.66</b>	<b>0.00</b>	<b>1,300,000.00</b>	<b>(210,250.00)</b>	<b>2,543,546.86</b>	
Receipts	850.67	65,279.35	357,065.78	23,028.50	0.00	0.00	0.00	446,224.30	
Disbursements	(131,068.52)	(226,875.32)	(315,994.54)	(16,806.60)	0.00	0.00	0.00	(690,744.98)	\$131,065.78 - Capital Transfer 2/5/10
<b>Ending Balance - February 28, 2010</b>	<b>237,212.01</b>	<b>763,963.42</b>	<b>68,139.19</b>	<b>139,961.56</b>	<b>0.00</b>	<b>1,300,000.00</b>	<b>(210,250.00)</b>	<b>2,299,026.18</b>	
Receipts	10.03	80,917.11	234,196.00	101,695.55	0.00	0.00	0.00	416,818.69	
Disbursements	(27,198.80)	(208,189.92)	(236,495.07)	(9,330.50)	0.00	0.00	0.00	(481,214.29)	\$27,196.00 Capital Transfer 3/31/10
<b>Ending Balance - March 31, 2010</b>	<b>210,023.24</b>	<b>636,690.61</b>	<b>65,840.12</b>	<b>232,326.61</b>	<b>0.00</b>	<b>1,300,000.00</b>	<b>(210,250.00)</b>	<b>2,234,630.58</b>	
Receipts	1,545.78	189,164.13	227,798.01	32,611.03	0.00	0.00	0.00	451,118.95	
CD's Redeemed	1,107,875.00	0.00	0.00	0.00	0.00	(1,107,875.00)	0.00	0.00	CD's redeemed in April, 2010 - \$1,107,875.00
Disbursements	(8.23)	(227,740.92)	(240,549.92)	(134,287.70)	0.00	0.00	17,875.00	(584,711.77)	
<b>Ending Balance - April 30, 2010</b>	<b>1,319,435.79</b>	<b>598,113.82</b>	<b>53,088.21</b>	<b>130,649.94</b>	<b>0.00</b>	<b>192,125.00</b>	<b>(192,375.00)</b>	<b>2,101,037.76</b>	
Receipts	38.63	102,526.72	222,000.00	32,113.56	0.00	0.00	0.00	356,678.91	
CD's Purchased	(907,625.00)	0.00	0.00	0.00	0.00	907,625.00	0.00	0.00	CD's purchased - Horizon Bank
Disbursements	(75.81)	(222,336.15)	(211,101.02)	(41,315.50)	0.00	0.00	0.00	(474,828.48)	
<b>Ending Balance - May 31, 2010</b>	<b>411,773.61</b>	<b>478,304.39</b>	<b>63,987.19</b>	<b>121,448.00</b>	<b>0.00</b>	<b>1,099,750.00</b>	<b>(192,375.00)</b>	<b>1,982,888.19</b>	
Receipts	15.58	151,204.34	222,741.68	13,866.32	0.00	0.00	0.00	387,827.92	
Disbursements	(33,746.04)	(189,247.41)	(264,784.72)	(46,753.75)	0.00	0.00	0.00	(534,531.92)	\$33,741.68 Capital Transfer 6/2/10
<b>Ending Balance - June 30, 2010</b>	<b>378,043.15</b>	<b>440,261.32</b>	<b>21,944.15</b>	<b>88,560.57</b>	<b>0.00</b>	<b>1,099,750.00</b>	<b>(192,375.00)</b>	<b>1,836,184.19</b>	
Receipts	100,650.05	757,013.78	282,000.00	11,909.30	0.00	0.00	0.00	1,151,573.13	2010 PSDA - \$100,000, Hotel/Motel - \$656,576
CD's Redeemed	925,625.00	0.00	0.00	0.00	0.00	(925,625.00)	0.00	0.00	Horizon Bank - \$907,625, Old Nat - \$18,000
Disbursements	0.00	(282,438.20)	(266,741.43)	(10,725.95)	0.00	0.00	17,875.00	(542,030.58)	
<b>Ending Balance - July 31, 2010</b>	<b>1,404,318.20</b>	<b>914,836.90</b>	<b>37,202.72</b>	<b>89,743.92</b>	<b>0.00</b>	<b>174,125.00</b>	<b>(174,500.00)</b>	<b>2,445,726.74</b>	
Receipts	59.23	96,122.97	210,492.30	11,469.64	0.00	0.00	0.00	318,144.14	
Disbursements	(10,492.30)	(200,298.17)	(222,383.37)	(24,262.60)	0.00	0.00	0.00	(457,436.44)	\$10,492.30 Capital Transfer 8/5/10
<b>Ending Balance - August 31, 2010</b>	<b>1,393,885.13</b>	<b>810,661.70</b>	<b>25,311.65</b>	<b>76,950.96</b>	<b>0.00</b>	<b>174,125.00</b>	<b>(174,500.00)</b>	<b>2,306,434.44</b>	
Receipts	57.22	88,729.87	203,087.00	17,491.10	0.00	0.00	0.00	309,365.19	
Disbursements	(22,087.00)	(181,595.16)	(192,026.74)	(17,305.19)	0.00	0.00	0.00	(413,014.09)	\$22,087.00 Capital Transfer 9/29/10
<b>Ending Balance - September 30, 2010</b>	<b>1,371,855.35</b>	<b>717,796.41</b>	<b>36,371.91</b>	<b>77,136.87</b>	<b>0.00</b>	<b>174,125.00</b>	<b>(174,500.00)</b>	<b>2,202,785.54</b>	

**Century Center Bank Statement Cash Summary**  
**September 30, 2006 through September 30, 2016**  
**Updated - October 5, 2016**

Month	Key Bank Capital Account	Key Bank Operating (1) Account	Key Bank A/P - Payroll Account	Key Bank Event Account	Key Bank Energy Bond (4) Account	Certificate of Deposit Capital	Old National Loan	Net	Notes
Receipts	58.26	89,504.01	239,000.00	15,021.00	0.00	0.00	0.00	343,583.27	
Disbursements	0.00	(239,317.99)	(237,116.09)	(6,536.65)	0.00	0.00	17,875.00	(465,095.73)	
<b>Ending Balance - October 31, 2010</b>	<b>1,371,913.61</b>	<b>567,982.43</b>	<b>38,255.82</b>	<b>85,621.22</b>	<b>0.00</b>	<b>174,125.00</b>	<b>(156,625.00)</b>	<b>2,081,273.08</b>	
Receipts	2,017.52	146,698.31	236,870.83	47,833.25	0.00	0.00	0.00	433,419.91	
Disbursements	(28,870.83)	(208,352.08)	(224,845.02)	0.00	0.00	0.00	0.00	(462,067.93)	\$28,870.83 Capital Transfer 11/09/10
<b>Ending Balance - November 30, 2010</b>	<b>1,345,060.30</b>	<b>506,328.66</b>	<b>50,281.63</b>	<b>133,454.47</b>	<b>0.00</b>	<b>174,125.00</b>	<b>(156,625.00)</b>	<b>2,052,625.06</b>	
Receipts	54.94	212,311.22	586,680.61	77,888.89	0.00	0.00	0.00	876,935.66	\$31,385.27 Capital Transfer 12/23/10
Disbursements	(81,680.61)	(505,946.70)	(556,062.71)	(107,700.05)	0.00	0.00	156,625.00	(1,094,765.07)	\$50,295.34 Capital Transfer 12/06/10
<b>Ending Balance - December 31, 2010</b>	<b>1,263,434.63</b>	<b>212,693.18</b>	<b>80,899.53</b>	<b>103,643.31</b>	<b>0.00</b>	<b>174,125.00</b>	<b>0.00</b>	<b>1,834,795.65</b>	\$157,147.73 Old National loan payoff
Receipts	139.50	804,986.04	261,063.37	25,880.50	0.00	0.00	0.00	1,092,069.41	\$656,718.00 hotel/motel tax revenue (50%)
Investment Transfers	174,125.00	0.00	0.00	0.00	0.00	(174,125.00)	0.00	0.00	Old National CD matured, deposited to capital
Disbursements	(70,592.98)	(218,344.99)	(314,202.24)	(24,997.99)	0.00	0.00	0.00	(628,138.20)	\$70,592.98 Capital Transfer 1/12/11
<b>Ending Balance - January 31, 2011</b>	<b>1,367,106.15</b>	<b>799,334.23</b>	<b>27,760.66</b>	<b>104,525.82</b>	<b>0.00</b>	<b>0.00</b>	<b>0.00</b>	<b>2,298,726.86</b>	
Receipts	52.35	110,294.40	252,386.25	42,266.88	0.00	0.00	0.00	404,999.88	
Disbursements	(3,386.25)	(249,497.36)	(223,989.90)	(22,568.30)	0.00	0.00	0.00	(499,441.81)	\$3,386.25 Capital Transfer 2/11/11
<b>Ending Balance - February 28, 2011</b>	<b>1,363,772.25</b>	<b>660,131.27</b>	<b>56,157.01</b>	<b>124,224.40</b>	<b>0.00</b>	<b>0.00</b>	<b>0.00</b>	<b>2,204,284.93</b>	
Receipts	56.78	111,966.43	244,821.41	96,706.95	0.00	0.00	0.00	453,551.57	
Disbursements	(40,821.41)	(205,261.45)	(266,186.20)	(21,487.28)	0.00	0.00	0.00	(533,756.34)	Capital transfers - \$35,297.78 & \$5,523.63
<b>Ending Balance - March 31, 2011</b>	<b>1,323,007.62</b>	<b>566,836.25</b>	<b>34,792.22</b>	<b>199,444.07</b>	<b>0.00</b>	<b>0.00</b>	<b>0.00</b>	<b>2,124,080.16</b>	
Receipts	100,056.01	63,543.60	193,288.98	34,825.80	0.00	0.00	0.00	391,714.39	2011 PSDA - \$100,000 - deposited 4/18/11
Disbursements	0.00	(194,061.62)	(198,892.31)	0.00	0.00	0.00	0.00	(392,953.93)	
<b>Ending Balance - April 30, 2011</b>	<b>1,423,063.63</b>	<b>436,318.23</b>	<b>29,188.89</b>	<b>234,269.87</b>	<b>0.00</b>	<b>0.00</b>	<b>0.00</b>	<b>2,122,840.62</b>	
Receipts	60.22	212,075.93	206,931.25	13,586.50	0.00	0.00	0.00	432,653.90	
Disbursements	(7,931.25)	(199,547.31)	(215,943.26)	(159,803.20)	0.00	0.00	0.00	(583,225.02)	Capital transfers - \$7,931.25 - 5/12/11
<b>Ending Balance - May 31, 2011</b>	<b>1,415,192.60</b>	<b>448,846.85</b>	<b>20,176.88</b>	<b>88,053.17</b>	<b>0.00</b>	<b>0.00</b>	<b>0.00</b>	<b>1,972,269.50</b>	
Receipts	56.61	836,264.15	321,615.92	67,678.93	0.00	0.00	0.00	1,225,615.61	\$656,718 hotel/motel tax - 6/8/11
Disbursements	(53,615.92)	(268,432.99)	(243,021.25)	(75,856.42)	0.00	0.00	0.00	(640,926.58)	Capital transfers - \$53,615.92 - 6/10/11
<b>Ending Balance - June 30, 2011</b>	<b>1,361,633.29</b>	<b>1,016,678.01</b>	<b>98,771.55</b>	<b>79,875.68</b>	<b>0.00</b>	<b>0.00</b>	<b>0.00</b>	<b>2,556,958.53</b>	
Receipts	57.76	103,808.62	167,036.15	12,561.05	0.00	0.00	0.00	283,463.58	
Disbursements	(3,036.15)	(166,013.92)	(252,968.25)	(18,560.10)	0.00	0.00	0.00	(440,578.42)	Capital transfers - \$3,036.15 - 7/15/11
<b>Ending Balance - July 31, 2011</b>	<b>1,358,654.90</b>	<b>954,472.71</b>	<b>12,839.45</b>	<b>73,876.63</b>	<b>0.00</b>	<b>0.00</b>	<b>0.00</b>	<b>2,399,843.69</b>	
Receipts	31.75	61,175.27	210,190.51	6,620.35	0.00	0.00	0.00	278,017.88	
Investment Transfers	(900,000.00)	0.00	0.00	0.00	0.00	900,000.00	0.00	0.00	Lake City CD - matures 12/10/11
Disbursements	(1,215.51)	(210,105.60)	(198,767.67)	(5,663.42)	0.00	0.00	0.00	(415,752.20)	Capital transfer - \$1,190.51 - 8/2/11
<b>Ending Balance - August 31, 2011</b>	<b>457,471.14</b>	<b>805,542.38</b>	<b>24,262.29</b>	<b>74,833.56</b>	<b>0.00</b>	<b>900,000.00</b>	<b>0.00</b>	<b>2,262,109.37</b>	
Receipts	18.64	71,780.30	201,008.14	15,151.95	0.00	0.00	0.00	287,959.03	
Disbursements	(8,008.14)	(193,715.52)	(201,436.83)	(11,245.17)	0.00	0.00	0.00	(414,405.66)	Capital transfer - \$8,008.14 - 9/16/11
<b>Ending Balance - September 30, 2011</b>	<b>449,481.64</b>	<b>683,607.16</b>	<b>23,833.60</b>	<b>78,740.34</b>	<b>0.00</b>	<b>900,000.00</b>	<b>0.00</b>	<b>2,135,662.74</b>	
Receipts	19.09	149,592.64	203,600.00	22,647.75	0.00	0.00	0.00	375,859.48	
Disbursements	0.00	(204,242.35)	(211,921.44)	(19,379.19)	0.00	0.00	0.00	(435,542.98)	
<b>Ending Balance - October 31, 2011</b>	<b>449,500.73</b>	<b>628,957.45</b>	<b>15,512.16</b>	<b>82,008.90</b>	<b>0.00</b>	<b>900,000.00</b>	<b>0.00</b>	<b>2,075,979.24</b>	
Receipts	18.47	156,769.60	205,000.00	41,863.35	0.00	0.00	0.00	403,651.42	
Disbursements	0.00	(205,818.96)	(181,251.02)	(24,013.58)	0.00	0.00	0.00	(411,083.56)	
<b>Ending Balance - November 30, 2011</b>	<b>449,519.20</b>	<b>579,908.09</b>	<b>39,261.14</b>	<b>99,858.67</b>	<b>0.00</b>	<b>900,000.00</b>	<b>0.00</b>	<b>2,068,547.10</b>	
Receipts	926.24	177,985.33	273,388.24	117,472.32	0.00	0.00	0.00	569,772.13	
Investment Transfers	900,000.00	0.00	0.00	0.00	0.00	(900,000.00)	0.00	0.00	Lake City CD - matured 12/10/11
Disbursements	(6,388.24)	(267,671.45)	(280,715.26)	(111,129.50)	0.00	0.00	0.00	(665,904.45)	Capital transfer - \$6,388.24 - 12/02/11
<b>Ending Balance - December 31, 2011</b>	<b>1,344,057.20</b>	<b>490,221.97</b>	<b>31,934.12</b>	<b>106,201.49</b>	<b>0.00</b>	<b>0.00</b>	<b>0.00</b>	<b>1,972,414.78</b>	
Receipts	56.92	748,591.32	172,000.00	25,630.50	0.00	0.00	0.00	946,278.74	Hotel/Motel - \$656,718.00 - 1/20/12
Disbursements	0.00	(172,135.09)	(193,998.20)	(19,725.60)	0.00	0.00	0.00	(385,858.89)	
<b>Ending Balance - January 31, 2012</b>	<b>1,344,114.12</b>	<b>1,066,678.20</b>	<b>9,935.92</b>	<b>112,106.39</b>	<b>0.00</b>	<b>0.00</b>	<b>0.00</b>	<b>2,532,834.63</b>	

**Century Center Bank Statement Cash Summary**  
**September 30, 2006 through September 30, 2016**  
**Updated - October 5, 2016**

Month	Key Bank Capital Account	Key Bank Operating (1) Account	Key Bank A/P - Payroll Account	Key Bank Event Account	Key Bank Energy Bond (4) Account	Certificate of Deposit Capital	Old National Loan	Net	Notes
Receipts	53.26	94,841.79	218,000.00	27,732.20	0.00	0.00	0.00	340,627.25	
Disbursements	0.00	(218,436.80)	(208,693.39)	(13,840.57)	0.00	0.00	0.00	(440,970.76)	
<b>Ending Balance - February 29, 2012</b>	<b>1,344,167.38</b>	<b>943,083.19</b>	<b>19,242.53</b>	<b>125,998.02</b>	<b>0.00</b>	<b>0.00</b>	<b>0.00</b>	<b>2,432,491.12</b>	
Receipts	53.98	124,814.80	218,500.00	64,115.26	0.00	0.00	0.00	407,484.04	
Disbursements	0.00	(218,936.30)	(199,140.56)	(13,187.92)	0.00	0.00	0.00	(431,264.78)	
<b>Ending Balance - March 31, 2012</b>	<b>1,344,221.36</b>	<b>848,961.69</b>	<b>38,601.97</b>	<b>176,925.36</b>	<b>0.00</b>	<b>0.00</b>	<b>0.00</b>	<b>2,408,710.38</b>	
Receipts	100,028.03	157,841.38	338,485.00	33,473.60	0.00	0.00	0.00	629,828.01	2012 PSDA revenue - \$100,000.00 - 4/3/12
Disbursements	(134,485.00)	(205,585.18)	(354,223.14)	(87,879.79)	0.00	0.00	0.00	(782,173.11)	Capital transfer - \$134,485.00 - 4/4/12 - chairs
<b>Ending Balance - April 30, 2012</b>	<b>1,309,764.39</b>	<b>801,217.89</b>	<b>22,863.83</b>	<b>122,519.17</b>	<b>0.00</b>	<b>0.00</b>	<b>0.00</b>	<b>2,256,365.28</b>	
Receipts	22.19	201,886.20	290,000.00	13,339.00	0.00	0.00	0.00	505,247.39	
Disbursements	0.00	(290,751.68)	(287,972.27)	(36,602.85)	0.00	0.00	0.00	(615,326.80)	
<b>Ending Balance - May 31, 2012</b>	<b>1,309,786.58</b>	<b>712,352.41</b>	<b>24,891.56</b>	<b>99,255.32</b>	<b>0.00</b>	<b>0.00</b>	<b>0.00</b>	<b>2,146,285.87</b>	
Receipts	21.47	770,352.87	209,764.00	17,927.81	0.00	0.00	0.00	998,066.15	\$656,718 hotel/motel tax - 6/29/12
Disbursements	0.00	(211,016.95)	(213,349.61)	(28,270.25)	0.00	0.00	0.00	(452,636.81)	
<b>Ending Balance - June 30, 2012</b>	<b>1,309,808.05</b>	<b>1,271,688.33</b>	<b>21,305.95</b>	<b>88,912.88</b>	<b>0.00</b>	<b>0.00</b>	<b>0.00</b>	<b>2,691,715.21</b>	
Receipts	22.12	112,499.33	210,340.00	9,324.80	0.00	0.00	0.00	332,186.25	
Disbursements	(21,340.00)	(189,928.86)	(223,919.06)	(24,495.80)	0.00	0.00	0.00	(459,683.72)	Capital transfer - \$21,340.00 - 7/31/12 - lighting
<b>Ending Balance - July 31, 2012</b>	<b>1,288,490.17</b>	<b>1,194,258.80</b>	<b>7,726.89</b>	<b>73,741.88</b>	<b>0.00</b>	<b>0.00</b>	<b>0.00</b>	<b>2,564,217.74</b>	
Receipts	21.82	77,230.81	209,550.00	33,826.25	0.00	0.00	0.00	320,628.88	
Disbursements	0.00	(209,703.83)	(201,170.60)	(14,478.05)	0.00	0.00	0.00	(425,352.48)	
<b>Ending Balance - August 31, 2012</b>	<b>1,288,511.99</b>	<b>1,061,785.78</b>	<b>16,106.29</b>	<b>93,090.08</b>	<b>0.00</b>	<b>0.00</b>	<b>0.00</b>	<b>2,459,494.14</b>	
Receipts	21.01	114,360.28	195,508.45	16,459.19	0.00	0.00	0.00	326,348.93	
Disbursements	(8,508.45)	(187,788.34)	(202,181.55)	(22,227.87)	0.00	0.00	0.00	(420,706.21)	Capital transfer - \$8,508.45- 9/07/12 - lighting
<b>Ending Balance - September 30, 2012</b>	<b>1,280,024.55</b>	<b>988,357.72</b>	<b>9,433.19</b>	<b>87,321.40</b>	<b>0.00</b>	<b>0.00</b>	<b>0.00</b>	<b>2,365,136.86</b>	
Receipts	21.65	108,825.26	209,811.25	30,082.70	0.00	0.00	0.00	348,740.86	
Disbursements	(5,211.25)	(204,769.72)	(209,988.03)	0.00	0.00	0.00	0.00	(419,969.00)	Capital transfer - \$5,211.25 - 10/18/12 - lighting
<b>Ending Balance - October 31, 2012</b>	<b>1,274,834.95</b>	<b>892,413.26</b>	<b>9,256.41</b>	<b>117,404.10</b>	<b>0.00</b>	<b>0.00</b>	<b>0.00</b>	<b>2,293,908.72</b>	
Receipts	20.90	222,529.99	243,000.00	17,760.05	0.00	0.00	0.00	483,310.94	
Disbursements	0.00	(246,026.22)	(210,661.06)	(51,049.11)	0.00	0.00	0.00	(507,736.39)	
<b>Ending Balance - November 30, 2012</b>	<b>1,274,855.85</b>	<b>868,917.03</b>	<b>41,595.35</b>	<b>84,115.04</b>	<b>0.00</b>	<b>0.00</b>	<b>0.00</b>	<b>2,269,483.27</b>	
Receipts	21.59	95,550.24	183,500.00	30,937.30	0.00	0.00	0.00	310,009.13	
Disbursements	0.00	(184,731.83)	(213,843.32)	(29.76)	0.00	0.00	0.00	(398,604.91)	
<b>Ending Balance - December 31, 2012</b>	<b>1,274,877.44</b>	<b>779,735.44</b>	<b>11,252.03</b>	<b>115,022.58</b>	<b>0.00</b>	<b>0.00</b>	<b>0.00</b>	<b>2,180,887.49</b>	
Receipts	100,022.04	799,825.99	189,000.00	51,115.09	0.00	0.00	0.00	1,139,963.12	\$100,000 PSDA, \$656,718 hotel/motel tax
Disbursements	0.00	(190,829.54)	(192,998.52)	(21,746.26)	0.00	0.00	0.00	(405,574.32)	
<b>Ending Balance - January 31, 2013</b>	<b>1,374,899.48</b>	<b>1,388,731.89</b>	<b>7,253.51</b>	<b>144,391.41</b>	<b>0.00</b>	<b>0.00</b>	<b>0.00</b>	<b>2,915,276.29</b>	
Receipts	21.10	127,932.61	246,289.06	35,551.14	0.00	0.00	0.00	409,793.91	
Disbursements	0.00	(247,801.41)	(236,543.51)	(19,120.50)	0.00	0.00	0.00	(503,465.42)	
<b>Ending Balance - February 28, 2013</b>	<b>1,374,920.58</b>	<b>1,268,863.09</b>	<b>16,999.06</b>	<b>160,822.05</b>	<b>0.00</b>	<b>0.00</b>	<b>0.00</b>	<b>2,821,604.78</b>	
Receipts	23.35	115,846.35	248,600.00	59,648.57	0.00	0.00	0.00	424,118.27	
Disbursements	0.00	(249,167.84)	(249,478.81)	(20,481.65)	0.00	0.00	0.00	(519,128.30)	
<b>Ending Balance - March 31, 2013</b>	<b>1,374,943.93</b>	<b>1,135,541.60</b>	<b>16,120.25</b>	<b>199,988.97</b>	<b>0.00</b>	<b>0.00</b>	<b>0.00</b>	<b>2,726,594.75</b>	
Receipts	22.60	75,931.20	225,000.00	20,852.20	0.00	0.00	0.00	321,806.00	
Disbursements	0.00	(226,584.81)	(227,394.04)	0.00	0.00	0.00	0.00	(453,978.85)	
<b>Ending Balance - April 30, 2013</b>	<b>1,374,966.53</b>	<b>984,887.99</b>	<b>13,726.21</b>	<b>220,841.17</b>	<b>0.00</b>	<b>0.00</b>	<b>0.00</b>	<b>2,594,421.90</b>	
Receipts	23.36	111,302.34	267,047.12	24,893.68	0.00	0.00	0.00	403,266.50	
Disbursements	0.00	(267,861.87)	(234,882.39)	0.00	0.00	0.00	0.00	(502,744.26)	
<b>Ending Balance - May 31, 2013</b>	<b>1,374,989.89</b>	<b>828,328.46</b>	<b>45,890.94</b>	<b>245,734.85</b>	<b>0.00</b>	<b>0.00</b>	<b>0.00</b>	<b>2,494,944.14</b>	
Receipts	22.60	748,674.23	331,000.00	15,904.40	0.00	0.00	0.00	1,095,601.23	\$656,718 hotel/motel tax rcd 6/21/2013
Disbursements	0.00	(332,662.04)	(287,565.49)	0.00	0.00	0.00	0.00	(620,227.53)	
<b>Ending Balance - June 30, 2013</b>	<b>1,375,012.49</b>	<b>1,244,340.65</b>	<b>89,325.45</b>	<b>261,639.25</b>	<b>0.00</b>	<b>0.00</b>	<b>0.00</b>	<b>2,970,317.84</b>	SMG New manager 7/1/2013

**Century Center Bank Statement Cash Summary**  
**September 30, 2006 through September 30, 2016**  
**Updated - October 5, 2016**

Month	Key Bank Capital Account	Key Bank Operating (1) Account	Key Bank A/P - Payroll Account	Key Bank Event Account	Key Bank Energy Bond (4) Account	Certificate of Deposit Capital	Old National Loan	Net	Notes
Receipts	23.36	140,163.94	133,000.00	50,996.02	0.00	0.00	0.00	324,183.32	
Disbursements	0.00	(149,636.54)	(213,956.14)	(11.87)	0.00	0.00	0.00	(363,604.55)	
<b>Ending Balance - July 31, 2013</b>	<b>1,375,035.85</b>	<b>1,234,868.05</b>	<b>8,369.31</b>	<b>312,623.40</b>	<b>0.00</b>	<b>0.00</b>	<b>0.00</b>	<b>2,930,896.61</b>	
Receipts	575,029.02	95,176.24	412,248.40	48,802.09	0.00	0.00	0.00	1,131,255.75	SMG Capital Contribution - \$575,000 - 8/13/13
Disbursements	0.00	(412,189.60)	(347,913.30)	(21.75)	0.00	0.00	0.00	(760,124.65)	
<b>Ending Balance - August 31, 2013</b>	<b>1,950,064.87</b>	<b>917,854.69</b>	<b>72,704.41</b>	<b>361,403.74</b>	<b>0.00</b>	<b>0.00</b>	<b>0.00</b>	<b>3,302,027.71</b>	
Receipts	32.06	384,542.90	266,000.00	81,812.63	0.00	0.00	0.00	732,387.59	
Disbursements	0.00	(266,363.77)	(282,771.45)	(300,050.50)	0.00	0.00	0.00	(849,185.72)	
<b>Ending Balance - September 30, 2013</b>	<b>1,950,096.93</b>	<b>1,036,033.82</b>	<b>55,932.96</b>	<b>143,165.87</b>	<b>0.00</b>	<b>0.00</b>	<b>0.00</b>	<b>3,185,229.58</b>	
Receipts	32.66	188,426.94	498,570.14	193,864.57	0.00	0.00	0.00	880,894.31	
Disbursements	(30,636.59)	(456,462.97)	(540,304.89)	(1,545.90)	0.00	0.00	0.00	(1,028,950.35)	Capital account transfers - \$30,636.59
<b>Ending Balance - October 31, 2013</b>	<b>1,919,493.00</b>	<b>767,997.79</b>	<b>14,198.21</b>	<b>335,484.54</b>	<b>0.00</b>	<b>0.00</b>	<b>0.00</b>	<b>3,037,173.54</b>	
Receipts	31.55	157,548.98	356,000.00	48,097.51	0.00	0.00	0.00	561,678.04	
Disbursements	0.00	(356,898.51)	(348,837.55)	(11.60)	0.00	0.00	0.00	(705,747.66)	
<b>Ending Balance - November 30, 2013</b>	<b>1,919,524.55</b>	<b>568,648.26</b>	<b>21,360.66</b>	<b>383,570.45</b>	<b>0.00</b>	<b>0.00</b>	<b>0.00</b>	<b>2,893,103.92</b>	
Receipts	31.68	410,792.35	428,631.87	109,427.83	0.00	0.00	0.00	948,883.73	
Disbursements	(161,858.87)	(266,201.40)	(319,690.06)	(300,384.45)	0.00	0.00	0.00	(1,048,134.78)	Three Capital account transfers - \$161,858.87
<b>Ending Balance - December 31, 2013</b>	<b>1,757,697.36</b>	<b>713,239.21</b>	<b>130,302.47</b>	<b>192,613.83</b>	<b>0.00</b>	<b>0.00</b>	<b>0.00</b>	<b>2,793,852.87</b>	
Receipts	29.85	101,422.67	421,423.70	40,495.71	0.00	0.00	0.00	563,371.93	
Disbursements	0.00	(419,737.72)	(464,453.06)	(25.20)	0.00	0.00	0.00	(884,215.98)	
<b>Ending Balance - January 31, 2014</b>	<b>1,757,727.21</b>	<b>394,924.16</b>	<b>87,273.11</b>	<b>233,084.34</b>	<b>0.00</b>	<b>0.00</b>	<b>0.00</b>	<b>2,473,008.82</b>	
Receipts	26.97	774,640.47	461,284.83	114,336.46	0.00	0.00	0.00	1,350,288.73	Hotel/Motel tax deposit of \$656,725.00
Disbursements	0.00	(460,415.80)	(466,553.59)	(24.40)	0.00	0.00	0.00	(926,993.79)	
<b>Ending Balance - February 28, 2014</b>	<b>1,757,754.18</b>	<b>709,148.83</b>	<b>82,004.35</b>	<b>347,396.40</b>	<b>0.00</b>	<b>0.00</b>	<b>0.00</b>	<b>2,896,303.76</b>	
Receipts	29.86	464,972.72	340,184.60	47,070.34	0.00	0.00	0.00	852,257.52	
Disbursements	0.00	(341,087.20)	(359,076.67)	(300,022.60)	0.00	0.00	0.00	(1,000,186.47)	Event Acct transfer to Operating Acct
<b>Ending Balance - March 31, 2014</b>	<b>1,757,784.04</b>	<b>833,034.35</b>	<b>63,112.28</b>	<b>94,444.14</b>	<b>0.00</b>	<b>0.00</b>	<b>0.00</b>	<b>2,748,374.81</b>	
Receipts	28.89	112,506.06	302,388.81	23,158.01	0.00	0.00	0.00	438,081.77	
Disbursements	0.00	(301,144.90)	(309,555.81)	(130.45)	0.00	0.00	0.00	(610,831.16)	Operating Acct transfer to Payroll/AP Account
<b>Ending Balance - April 30, 2014</b>	<b>1,757,812.93</b>	<b>644,395.51</b>	<b>55,945.28</b>	<b>117,471.70</b>	<b>0.00</b>	<b>0.00</b>	<b>0.00</b>	<b>2,575,625.42</b>	
Receipts	29.86	409,269.06	572,096.86	97,304.13	0.00	0.00	0.00	1,078,699.91	
Disbursements	0.00	(573,580.19)	(526,323.86)	(200,011.00)	0.00	0.00	0.00	(1,299,915.05)	Operating Acct transfer to Payroll/AP Account
<b>Ending Balance - May 31, 2014</b>	<b>1,757,842.79</b>	<b>480,084.38</b>	<b>101,718.28</b>	<b>14,764.83</b>	<b>0.00</b>	<b>0.00</b>	<b>0.00</b>	<b>2,354,410.28</b>	
Receipts	28.90	149,402.06	443,434.70	97,800.47	0.00	0.00	0.00	690,666.13	
Disbursements	0.00	(443,788.17)	(372,049.93)	(554.18)	0.00	0.00	0.00	(816,392.28)	Operating Acct transfer to Payroll/AP Account
<b>Ending Balance - June 30, 2014</b>	<b>1,757,871.69</b>	<b>185,698.27</b>	<b>173,103.05</b>	<b>112,011.12</b>	<b>0.00</b>	<b>0.00</b>	<b>0.00</b>	<b>2,228,684.13</b>	
Receipts	29.86	830,020.71	372,871.74	56,609.36	0.00	0.00	0.00	1,259,531.67	Hotel/Motel tax deposit of \$667,785.42
Disbursements	0.00	(380,041.97)	(464,911.30)	(37.80)	0.00	0.00	0.00	(844,991.07)	Operating Acct transfer to Payroll/AP Account
<b>Ending Balance - July 31, 2014</b>	<b>1,757,901.55</b>	<b>635,677.01</b>	<b>81,063.49</b>	<b>168,582.68</b>	<b>0.00</b>	<b>0.00</b>	<b>0.00</b>	<b>2,643,224.73</b>	
Receipts	29.11	471,201.02	495,826.23	45,634.73	0.00	0.00	0.00	1,012,691.09	Transferred from capital acct for elevator
Disbursements	(339,363.00)	(495,947.72)	(412,931.96)	(18.90)	0.00	0.00	0.00	(1,248,261.58)	Operating Acct transfer to Payroll/AP Account
<b>Ending Balance - August 31, 2014</b>	<b>1,418,567.66</b>	<b>610,930.31</b>	<b>163,957.76</b>	<b>214,198.51</b>	<b>0.00</b>	<b>0.00</b>	<b>0.00</b>	<b>2,407,654.24</b>	
Receipts	23.32	322,224.81	200,557.10	11,681.55	0.00	0.00	0.00	534,486.78	
Disbursements	0.00	(202,291.27)	(268,004.45)	(11.30)	0.00	0.00	0.00	(470,307.02)	Operating Acct transfer to Payroll/AP Account
<b>Ending Balance - September 30, 2014</b>	<b>1,418,590.98</b>	<b>730,863.85</b>	<b>96,510.41</b>	<b>225,868.76</b>	<b>0.00</b>	<b>0.00</b>	<b>0.00</b>	<b>2,471,834.00</b>	
Receipts	24.10	414,271.22	343,500.00	37,953.44	0.00	0.00	0.00	795,748.76	Event Acct transfer to Operating Acct
Disbursements	0.00	(347,731.17)	(285,198.23)	(200,025.00)	0.00	0.00	0.00	(832,954.40)	Operating Acct transfer to Payroll/AP Account
<b>Ending Balance - October 31, 2014</b>	<b>1,418,615.08</b>	<b>797,403.90</b>	<b>154,812.18</b>	<b>63,797.20</b>	<b>0.00</b>	<b>0.00</b>	<b>0.00</b>	<b>2,434,628.36</b>	
Receipts	23.32	296,939.07	270,175.24	16,467.06	0.00	0.00	0.00	583,604.69	
Disbursements	0.00	(273,417.64)	(315,050.51)	(31.80)	0.00	0.00	0.00	(588,499.95)	Operating Acct transfer to Payroll/AP Account
<b>Ending Balance - November 30, 2014</b>	<b>1,418,638.40</b>	<b>820,925.33</b>	<b>109,936.91</b>	<b>80,232.46</b>	<b>0.00</b>	<b>0.00</b>	<b>0.00</b>	<b>2,429,733.10</b>	

**Century Center Bank Statement Cash Summary**  
**September 30, 2006 through September 30, 2016**  
**Updated - October 5, 2016**

Month	Key Bank Capital Account	Key Bank Operating (1) Account	Key Bank A/P - Payroll Account	Key Bank Event Account	Key Bank Energy Bond (4) Account	Certificate of Deposit Capital	Old National Loan	Net	Notes
Receipts	24.10	212,738.77	412,700.51	63,174.15	0.00	0.00	0.00	688,637.53	
Disbursements	0.00	(435,002.87)	(375,061.70)	(12.40)	0.00	0.00	0.00	(810,076.97)	Operating Acct transfer to Payroll/AP Account
<b>Ending Balance -December 31, 2014</b>	<b>1,418,662.50</b>	<b>598,661.23</b>	<b>147,575.72</b>	<b>143,394.21</b>	<b>0.00</b>	<b>0.00</b>	<b>0.00</b>	<b>2,308,293.66</b>	
Receipts	24.09	58,843.70	211,756.71	14,391.58	0.00	0.00	0.00	285,016.08	
Disbursements	0.00	(217,591.79)	(319,020.63)	(1.20)	0.00	0.00	0.00	(536,613.62)	Operating Acct transfer to Payroll/AP Account
<b>Ending Balance -January 31, 2015</b>	<b>1,418,686.59</b>	<b>439,913.14</b>	<b>40,311.80</b>	<b>157,784.59</b>	<b>0.00</b>	<b>0.00</b>	<b>0.00</b>	<b>2,056,696.12</b>	
Receipts	20.89	849,465.78	317,237.50	61,785.95	0.00	0.00	0.00	1,228,510.12	Hotel/Motel tax deposit of \$656,725.00
Disbursements (3)	(66,156.00)	(318,508.02)	(296,453.62)	(21.60)	0.00	0.00	0.00	(681,139.24)	Operating Acct transfer to Payroll/AP Account
<b>Ending Balance -February 28, 2015</b>	<b>1,352,551.48</b>	<b>970,870.90</b>	<b>61,095.68</b>	<b>219,548.94</b>	<b>0.00</b>	<b>0.00</b>	<b>0.00</b>	<b>2,604,067.00</b>	
Receipts	22.98	356,611.30	304,000.00	47,680.20	0.00	0.00	0.00	708,314.48	
Disbursements	0.00	(305,619.56)	(309,094.58)	(97,861.79)	0.00	0.00	0.00	(712,575.93)	Operating Acct transfer to Payroll/AP Account
<b>Ending Balance -March 31, 2015</b>	<b>1,352,574.46</b>	<b>1,021,862.64</b>	<b>56,001.10</b>	<b>169,367.35</b>	<b>0.00</b>	<b>0.00</b>	<b>0.00</b>	<b>2,599,805.55</b>	
Receipts	22.23	241,288.96	391,753.56	65,870.52	0.00	0.00	0.00	698,935.27	
Disbursements	0.00	(390,103.99)	(325,327.76)	(20.20)	0.00	0.00	0.00	(715,451.95)	Operating Acct transfer to Payroll/AP Account
<b>Ending Balance -April 30, 2015</b>	<b>1,352,596.69</b>	<b>873,047.61</b>	<b>122,426.90</b>	<b>235,217.67</b>	<b>0.00</b>	<b>0.00</b>	<b>0.00</b>	<b>2,583,288.87</b>	
Receipts	73.85	185,423.53	396,481.76	75,987.70	50,000.00	0.00	0.00	707,966.84	Transferred from Capital Acct to Bond Account
Disbursements	(50,000.00)	(419,083.83)	(328,039.60)	0.00	0.00	0.00	0.00	(797,123.43)	Operating Acct transfer to Payroll/AP Account
<b>Ending Balance -May 31, 2015</b>	<b>1,302,670.54</b>	<b>639,387.31</b>	<b>190,869.06</b>	<b>311,205.37</b>	<b>50,000.00</b>	<b>0.00</b>	<b>0.00</b>	<b>2,494,132.28</b>	
Receipts	106.36	239,284.14	506,368.11	47,725.93	0.00	0.00	0.00	793,484.54	Transferred from Capital Acct to AP Account
Disbursements (5)	(130,439.80)	(371,129.19)	(453,373.45)	(19.00)	6.71	0.00	0.00	(954,954.73)	Operating Acct transfer to Payroll/AP Account
<b>Ending Balance -June 30, 2015</b>	<b>1,172,337.10</b>	<b>507,542.26</b>	<b>243,863.72</b>	<b>358,912.30</b>	<b>50,006.71</b>	<b>0.00</b>	<b>0.00</b>	<b>2,332,662.09</b>	
Receipts	95.48	752,685.10	639,100.06	60,189.71	0.00	0.00	0.00	1,452,070.35	Transferred from Capital Acct to AP Account
Disbursements	(87,734.96)	(554,681.06)	(584,887.77)	(15.20)	4.25	0.00	0.00	(1,227,314.74)	Operating Acct transfer to Payroll/AP Account
<b>Ending Balance -July 31, 2015</b>	<b>1,084,697.62</b>	<b>705,546.30</b>	<b>298,076.01</b>	<b>419,086.81</b>	<b>50,010.96</b>	<b>0.00</b>	<b>0.00</b>	<b>2,557,417.70</b>	
Receipts	91.91	756,185.21	162,439.82	81,619.64	0.00	0.00	0.00	1,000,336.58	Transferred from Capital Acct to AP Account
Disbursements	(4,190.00)	(155,481.74)	(382,233.97)	(359,101.29)	4.24	0.00	0.00	(901,002.76)	Operating Acct transfer to Payroll/AP Account
<b>Ending Balance -August 31, 2015</b>	<b>1,080,599.53</b>	<b>1,306,249.77</b>	<b>78,281.86</b>	<b>141,605.16</b>	<b>50,015.20</b>	<b>0.00</b>	<b>0.00</b>	<b>2,656,751.52</b>	
Receipts	88.82	184,555.53	293,266.82	26,468.00	0.00	0.00	0.00	504,379.17	
Disbursements	0.00	(294,795.02)	(344,321.33)	(23.80)	4.11	0.00	0.00	(639,136.04)	Operating Acct transfer to Payroll/AP Account
<b>Ending Balance -September 30, 2015</b>	<b>1,080,688.35</b>	<b>1,196,010.28</b>	<b>27,227.35</b>	<b>168,049.36</b>	<b>50,019.31</b>	<b>0.00</b>	<b>0.00</b>	<b>2,521,994.65</b>	
Receipts	91.79	79,081.20	361,000.00	66,870.35	4.25	0.00	0.00	507,047.59	
Disbursements	0.00	(362,815.38)	(364,394.48)	(23.20)	0.00	0.00	0.00	(727,233.06)	Operating Acct transfer to Payroll/AP Account
<b>Ending Balance -October 31, 2015</b>	<b>1,080,780.14</b>	<b>912,276.10</b>	<b>23,832.87</b>	<b>234,896.51</b>	<b>50,023.56</b>	<b>0.00</b>	<b>0.00</b>	<b>2,301,809.18</b>	
Receipts	85.56	309,376.36	427,736.09	116,334.06	4.11	0.00	0.00	853,536.18	Operating Acct transfer to Payroll/AP Account
Disbursements	(78,878.81)	(346,762.17)	(361,375.67)	0.00	0.00	0.00	0.00	(787,016.65)	Capital Account purchase of assets
<b>Ending Balance -November 30, 2015</b>	<b>1,001,986.89</b>	<b>874,890.29</b>	<b>90,193.29</b>	<b>351,230.57</b>	<b>50,027.67</b>	<b>0.00</b>	<b>0.00</b>	<b>2,368,328.71</b>	
Receipts	85.11	194,971.17	441,180.99	40,375.82	4.25	0.00	0.00	676,617.34	Operating Acct transfer to Payroll/AP Account
Disbursements	0.00	(443,588.23)	(449,318.79)	0.00	0.00	0.00	0.00	(892,907.02)	
<b>Ending Balance -December 31, 2015</b>	<b>1,002,072.00</b>	<b>626,273.23</b>	<b>82,055.49</b>	<b>391,606.39</b>	<b>50,031.92</b>	<b>0.00</b>	<b>0.00</b>	<b>2,152,039.03</b>	
Receipts	84.87	1,087,354.56	296,000.00	33,855.30	4.24	0.00	0.00	1,417,298.97	Hotel/Motel Tax deposit
Disbursements	0.00	(298,550.34)	(302,791.32)	(272,655.19)	0.00	0.00	0.00	(873,996.85)	Operating Acct transfer to Payroll/AP Account
<b>Ending Balance -January 31, 2016</b>	<b>1,002,156.87</b>	<b>1,415,077.45</b>	<b>75,264.17</b>	<b>152,806.50</b>	<b>50,036.16</b>	<b>0.00</b>	<b>0.00</b>	<b>2,695,341.15</b>	
Receipts	79.41	387,948.55	295,353.74	86,520.70	3.97	0.00	0.00	769,906.37	
Disbursements	0.00	(289,127.72)	(355,903.31)	0.00	0.00	0.00	0.00	(645,031.03)	Operating Acct transfer to Payroll/AP Account
<b>Ending Balance -February 29, 2016</b>	<b>1,002,236.28</b>	<b>1,513,898.28</b>	<b>14,714.60</b>	<b>239,327.20</b>	<b>50,040.13</b>	<b>0.00</b>	<b>0.00</b>	<b>2,820,216.49</b>	
Receipts	84.89	250,931.29	496,041.69	30,291.90	4.23	0.00	0.00	777,354.00	
Disbursements	0.00	(499,898.29)	(377,432.42)	0.00	0.00	0.00	0.00	(877,330.71)	Operating Acct transfer to Payroll/AP Account
<b>Ending Balance - March 31, 2016</b>	<b>1,002,321.17</b>	<b>1,264,931.28</b>	<b>133,323.87</b>	<b>269,619.10</b>	<b>50,044.36</b>	<b>0.00</b>	<b>0.00</b>	<b>2,720,239.78</b>	
Receipts	81.95	275,214.67	260,247.49	49,273.44	4.11	0.00	0.00	584,821.66	
Disbursements	(38,747.49)	(224,885.39)	(285,995.70)	(115,435.21)	0.00	0.00	0.00	(665,063.79)	Operating Acct transfer to Payroll/AP Account
<b>Ending Balance - April 30, 2016</b>	<b>963,655.63</b>	<b>1,315,260.56</b>	<b>107,575.66</b>	<b>203,457.33</b>	<b>50,048.47</b>	<b>0.00</b>	<b>0.00</b>	<b>2,639,997.65</b>	

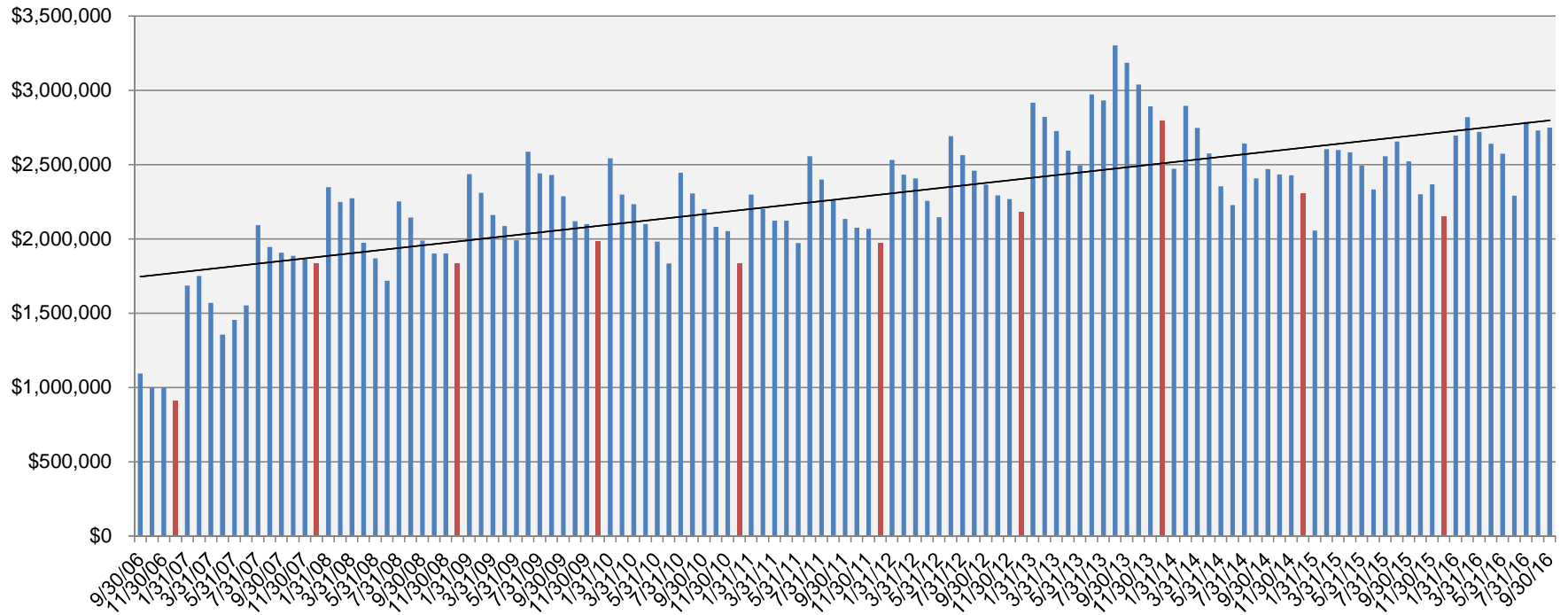


**Century Center Bank Statement Cash Summary**  
**September 30, 2006 through September 30, 2016**  
**Updated - October 5, 2016**

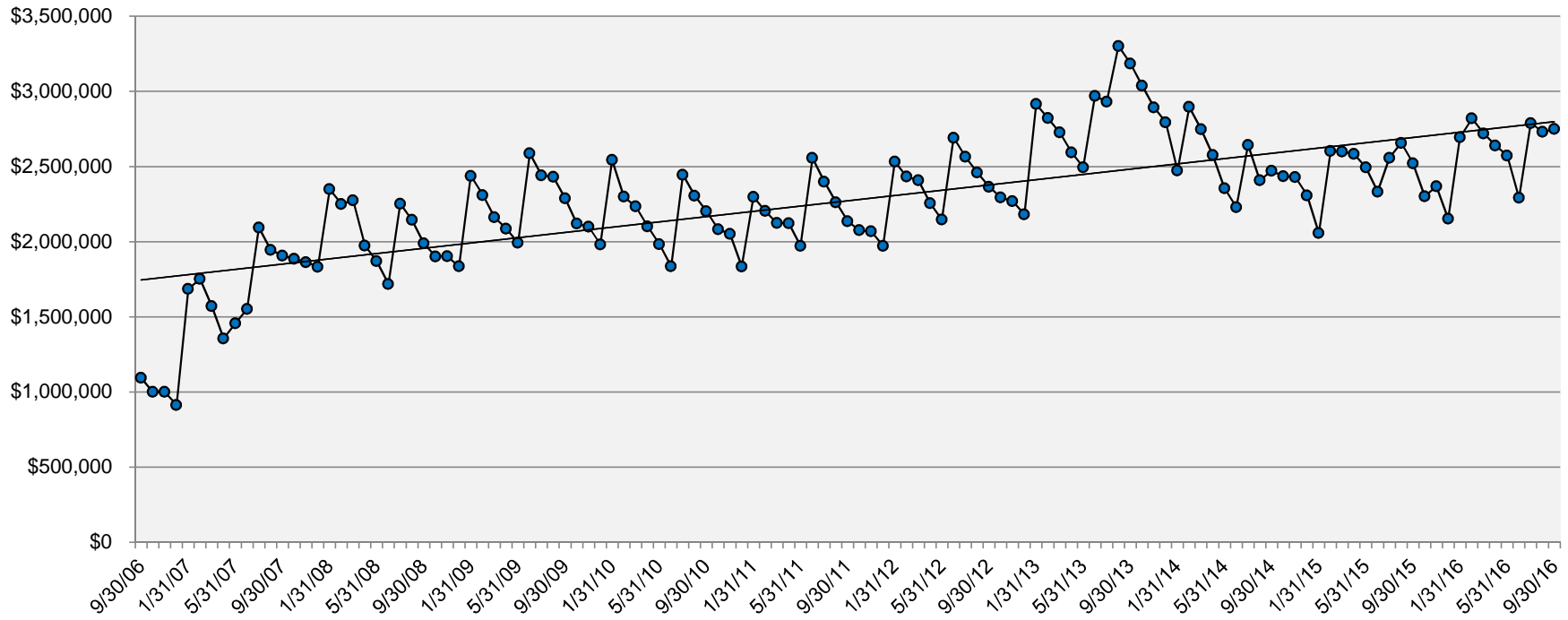
Month	Key Bank Capital Account	Key Bank Operating (1) Account	Key Bank A/P - Payroll Account	Key Bank Event Account	Key Bank Energy Bond (4) Account	Certificate of Deposit Capital	Old National Loan	Net	Notes
Receipts	81.63	240,129.13	380,021.92	96,215.86	4.24	0.00	0.00	716,452.78	
Disbursements	<u>0.00</u>	<u>(385,303.75)</u>	<u>(397,859.91)</u>	<u>0.00</u>	<u>0.00</u>	<u>0.00</u>	<u>0.00</u>	<u>(783,163.66)</u>	Operating Acct transfer to Payroll/AP Account
<b>Ending Balance - May 31, 2016</b>	<b>963,737.26</b>	<b>1,170,085.94</b>	<b>89,737.67</b>	<b>299,673.19</b>	<b>50,052.71</b>	<b>0.00</b>	<b>0.00</b>	<b>2,573,286.77</b>	
Receipts	76.38	274,182.54	466,551.37	36,993.89	4.10	0.00	0.00	777,808.28	
Disbursements	<u>(56,406.00)</u>	<u>(436,001.88)</u>	<u>(566,902.71)</u>	<u>0.00</u>	<u>0.00</u>	<u>0.00</u>	<u>0.00</u>	<u>(1,059,310.59)</u>	Operating Acct transfer to Payroll/AP Account
<b>Ending Balance - June 30, 2016</b>	<b>907,407.64</b>	<b>1,008,266.60</b>	<b>(10,613.67)</b>	<b>336,667.08</b>	<b>50,056.81</b>	<b>0.00</b>	<b>0.00</b>	<b>2,291,784.46</b>	
Receipts	75.83	804,071.05	455,710.46	40,268.01	4.24	0.00	0.00	1,300,129.59	
Disbursements	<u>(13,848.00)</u>	<u>(445,063.37)</u>	<u>(344,559.63)</u>	<u>0.00</u>	<u>0.00</u>	<u>0.00</u>	<u>0.00</u>	<u>(803,471.00)</u>	Operating Acct transfer to Payroll/AP Account
<b>Ending Balance - July 31, 2016</b>	<b>893,635.47</b>	<b>1,367,274.28</b>	<b>100,537.16</b>	<b>376,935.09</b>	<b>50,061.05</b>	<b>0.00</b>	<b>0.00</b>	<b>2,788,443.05</b>	
Receipts	75.24	583,915.04	337,875.60	113,162.76	4.24	0.00	0.00	1,035,032.88	
Disbursements	<u>(9,001.00)</u>	<u>(329,598.99)</u>	<u>(394,783.51)</u>	<u>(359,858.00)</u>	<u>0.00</u>	<u>0.00</u>	<u>0.00</u>	<u>(1,093,241.50)</u>	Operating Acct transfer to Payroll/AP Account
<b>Ending Balance - August 31, 2016</b>	<b>884,709.71</b>	<b>1,621,590.33</b>	<b>43,629.25</b>	<b>130,239.85</b>	<b>50,065.29</b>	<b>0.00</b>	<b>0.00</b>	<b>2,730,234.43</b>	
Receipts	72.52	310,514.74	350,042.45	59,410.07	4.10	0.00	0.00	720,043.88	
Disbursements	<u>0.00</u>	<u>(351,665.07)</u>	<u>(348,708.86)</u>	<u>0.00</u>	<u>0.00</u>	<u>0.00</u>	<u>0.00</u>	<u>(700,373.93)</u>	Operating Acct transfer to Payroll/AP Account
<b>Ending Balance - August 31, 2016</b>	<b>884,782.23</b>	<b>1,580,440.00</b>	<b>44,962.84</b>	<b>189,649.92</b>	<b>50,069.39</b>	<b>0.00</b>	<b>0.00</b>	<b>2,749,904.38</b>	

- (1) Set up new account during March 31, 2008. Transfer from old account.  
(2) Errors in account transfers between bank accounts. Net effect is zero. These have been reversed in April, 2008.  
(3) Transfer from Capital account to Operating account to cover smallwares purchased in 2014 with SMG Capital contribution from 2013.  
(4) Set up new account in May 2015 to fund Energy Savings Bond Contract.  
(5) Transfer from Capital account to AP account to cover downpayment on Energy Conservation Bond project.

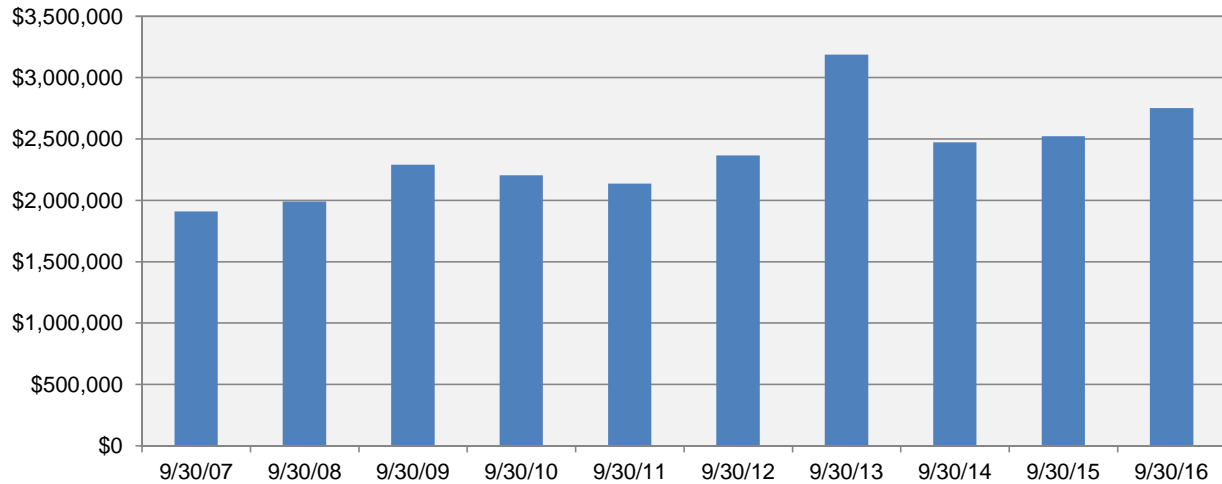
### Century Center Bank Balances Net of Old National Loan 9/30/06 to 9/30/16 - Bar Chart



## Century Center Bank Balances Net of Old National Loan 9/30/06 to 9/30/16 - Line Chart



**Bank Statement Balances Net of Old National Loan  
September 30, 2007 - September 30, 2016**



	<b>Amount</b>	<b>Annual Percent Change</b>	<b>Cumulative Percent Change</b>
9/30/07	\$1,907,074.40	-	-
9/30/08	1,989,769.36	4.34%	4.34%
9/30/09	2,288,572.15	15.02%	20.00%
9/30/10	2,202,785.54	-3.75%	15.51%
9/30/11	2,135,662.74	-3.05%	11.99%
9/30/12	2,365,136.86	10.74%	24.02%
9/30/13	3,185,229.58	34.67%	67.02%
9/30/14	2,471,834.00	-22.40%	29.61%
9/30/15	2,521,994.65	2.03%	32.24%
9/30/16	2,749,904.38	9.04%	44.19%

Note: Hotel/motel tax revenue was received in June during 2009, 2011, 2012 and 2013.

Hotel/motel tax revenue was received in July during 2007, 2008, 2010, 2014, 2015, and 2016.

Hotel/motel tax revenue is usually received in January but was received in February 2014 and 2015.

SMG contributed \$575,000 in August 2013.