

November 15, 2002

Ms. Ann Kolata, Deputy Executive Director
City of South Bend Department of Economic and Community Development
227 West Jefferson Blvd, 12th floor
South Bend, Indiana 46601

RE: Scope of Work for Groundwater Delineation for Area C (Former Oliver Plow Property),
South Bend, Indiana; SBI013.200.00012.

Dear Ms. Kolata:

Hull & Associates, Inc. (Hull) is pleased to submit this proposal to provide environmental consulting services for the sampling of groundwater on the Peterson Printing Property and the initial delineation volatile organic compounds in the southwest portion of the Area C.

Confirmation that volatile organic compounds (VOCs) are present on the Peterson Printing property and are migrating on the southwest portion of Area C will be accomplished by collecting and analyzing a groundwater sample from an existing monitoring well on the Peterson Printing property. Hull also proposes to collect groundwater samples using direct-push sampling techniques from the northeast portion of the property (refer to the attached figure in Attachment A).

Identification of a potential VOC source and additional delineation of the plume in the southwest portion of Area C would be accomplished using a direct-push technology and sampling at two depths per drilling location. Direct-push sampling has advantages over monitoring well installation/sampling in that access is usually easier to obtain and costs are considerably lower. Proposed direct-push groundwater sampling locations are shown on the Figure in Attachment A. Samples collected from both the Peterson Printing property and Area C will be analyzed by Method 8260.

The following describes scopes of work for VOC confirmation and initial plume delineation. The general scope of work for supporting the City's effort to establish a groundwater use ordinance is summarized above.

PETERSON PRINTING AND AREA C INVESTIGATION

Peterson Printing Investigation

Task IA Direct-push Boring/Temporary Monitoring Well Installation

This task includes the advancement of temporary screens using direct-push technologies (e.g., a ST-15 Hydropunch) to a total depth of approximately 40 ft. below grade at each of at one sampling location in the northeast portion of the Property. The location of this temporary monitoring well is shown on the Figure in Attachment A.

Hull will work with the drilling subcontractor and appropriate City authorities to clear utilities. Drill cuttings and sample purge and decontamination water will be containerized and placed at a location designated by the City.

Task IB Groundwater Sample Collection

This task includes the collection of two groundwater samples using direct-push technologies (two samples at variable depth per borehole) and one sample from an existing monitoring well. These samples will be analyzed for VOCs. The QA/QC samples include a trip blank, a field/equipment blank, and a duplicate sample, as described in Task IIB.

VOC Source and Additional Plume Delineation of the Southwest Portion of Area C

Task IIA Direct-push Boring/Temporary Monitoring Well Installation

This task includes the advancement of temporary screens using direct-push technologies (e.g., a ST-15 Hydropunch) to a total depth of approximately 40 ft. below grade at each of six locations. The locations of these temporary monitoring wells are shown on the Figure in Attachment A.

Hull will work with the drilling subcontractor and appropriate City authorities to clear utilities for drilling locations. Drill cuttings and sample purge and decontamination water will be containerized and placed at a location designated by the City.

Task IIB Groundwater Sample Collection

This task includes the collection of 12 groundwater samples using direct-push technologies (two samples at variable depth per borehole) plus two duplicates and two field blanks, to be analyzed for VOCs. Two trip blanks will also be analyzed for VOCs. After the groundwater sampling is completed, Hull will collect a round of water levels from monitoring wells on Area C to evaluate the groundwater flow conditions at the time of sampling.

Task III Groundwater Sampling Letter Report

This task includes the preparation of a letter report documenting field activities and findings. This report will, as necessary, provide recommendations for additional permanent monitoring wells and provide confirmation that VOCs are migrating onto Area C.

COMPENSATION

Estimated costs to complete the Scope of Work described above total \$12,157, assuming that standard laboratory analytical turnaround times are used. Cost breakdowns are provided on Table 1 in Attachment B. Costs presented in this proposal are based on billing rates included in Table 2 in Attachment B. Actual rates and hours expended for each category may vary based on project personnel used. Hull will bill for actual labor hours and other project costs with the total anticipated cost for each task not to exceed the total costs described in herein.

Ms. Ann Kolata
November 15, 2002
SBI013.200.00012
Page 3

SCHEDULE

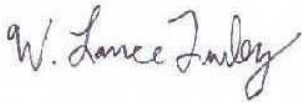
Hull will initiate the work within one to two weeks of authorization to proceed by the City. Deadlines will be arranged between the City and Hull as appropriate. Work will be initiated subject to the City's endorsement of the Task Order contained in Attachment C or other written authorization provided by the City, and subject to terms and conditions of the standing General Services Agreement between the City and Hull.

ADDITIONAL WORK

Additional work beyond the scope of work defined in this letter will not be performed until such time as an amendment has been prepared in writing to address the additional work and said amendment has been approved by the City.

Please give me a call with any questions or comments concerning this letter or the attached cost estimate.

Sincerely,

A handwritten signature in dark ink, appearing to read "W. Lance Turley". The signature is fluid and cursive, with the first name "W." and last name "Turley" clearly legible.

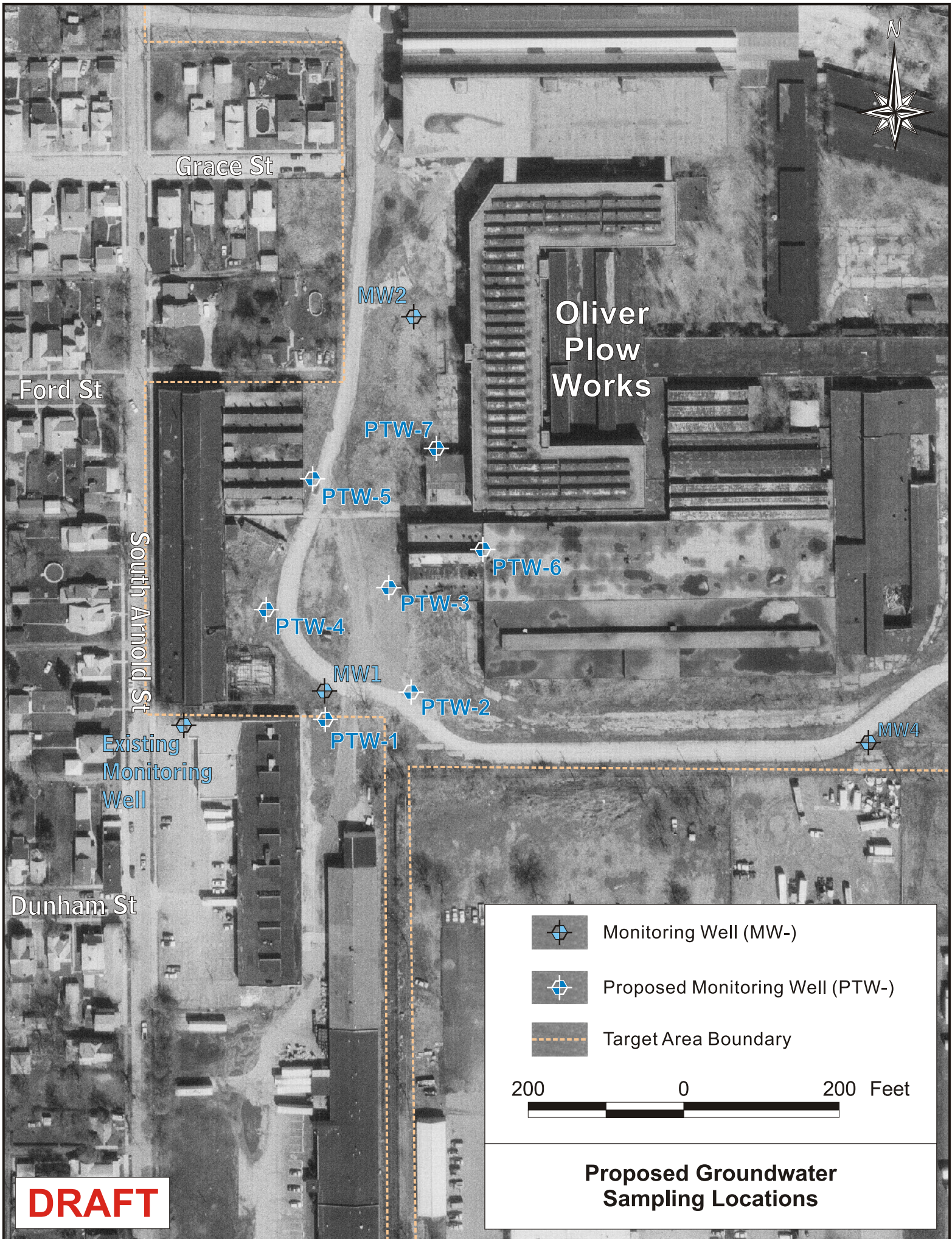
W. Lance Turley, P.G., Sr. Project Manager

WLT/kf

Ct.: Andy Laurent, City of South Bend Department of Community
Economic Development
Cheryl Greene, City of South Bend Department of Law
George Plews, Plews Shadley Racher & Braun
Terry Baehr, Hull & Associates, Inc.

Attachment

ATTACHMENT A
PROPOSED DIRECT-PUSH DRILLING LOCATIONS



ATTACHMENT B

Tables

TABLE 1
FEE SCHEDULE
ENVIRONMENTAL CONSULTING SERVICES RELATED TO
EVALUATION OF GROUNDWATER CONTAMINATION
FROM AREA C IN THE STUDEBAKER CORRIDOR
NOVEMBER 2002

<u>Unit Item</u>	<u>Unit Price</u>	<u>Units</u>	<u>Estimated Total - Direct-Push</u>
Task IA - Monitoring Well Installation/Direct-Push Advancement (includes mobilization/demobilization)			
Senior Project Manager	\$120 /hr.	0.5 hrs.	\$60
Senior Hydrogeologist	\$87 /hr.	1 hrs.	\$87
Hydrogeologist I	\$58 /hr	4 hrs.	\$232
Direct-Push Advancement (includes sampling	\$1,300 /day	0.5 day	\$650
Direct Expenses (includes field screening instruments; mileage, copies, long distance, etc	\$200 /LS(a.)	1 LS	\$200
Task IA Subtotal			\$1,229
Task IB - Collection and Analysis of Groundwater Samples			
Hydrogeologist II (Sample Preparation/Shipping)	\$58 /hr.	4 hrs.	\$232
Analytical Costs -VOCs Push (Method 8260	\$116 /sample	3 samples	\$347
Direct Expenses (includes field sampling instrument; mileage, copies, long distance, etc	\$50 /LS	1 LS	\$50
Task IB Subtotal			\$629
Task IIA - Monitoring Well Installation/Direct-Push Advancement (includes mobilization/demobilization)			
Senior Project Manager	\$120 /hr.	1 hrs.	\$120
Senior Hydrogeologist	\$87 /hr.	2 hrs.	\$174
Hydrogeologist I	\$58 /hr	20 hrs.	\$1,160
Direct-Push Advancement (includes sampling	\$1,300 /day	2 days	\$2,600
Direct Expenses (includes field screening instruments; mileage, copies, long distance, etc	\$400 /LS(a.)	1 LS	\$400
Task I Subtotal			\$4,454
Task IIB - Collection and Analysis of Groundwater Samples			
Hydrogeologist II (Sample Preparation/Shipping)	\$58 /hr.	10 hrs.	\$580
Analytical Costs -VOCs Push (Method 8260	\$116 /sample	18 samples	\$2,079
Direct Expenses (includes field sampling instrument; mileage, copies, long distance, etc	\$250 /LS	1 LS	\$250
Task II Subtotal			\$2,909
Task III - Letter Report			
Senior Project Manage	\$120 /hr.	4 hr.	\$480
Senior Hydrogeologis	\$87 /hr.	8 hrs.	\$696
Hydrogeologist I	\$58 /hr	16 hrs.	\$928
Hydrogeologist I (research	46.00 /hr.	2 hrs.	\$92
Senior Technician (CAD) (base map or aerial map; lay-out)	54.00 /hr.	6 Hrs..	\$324
Clerical (document formatting	33.00 /hr.	2 hrs.	\$66
Direct Expenses	350.00 /ea.	1 LS	\$350
Task III Subtotal			\$2,936
PROJECT TOTAL			\$12,157

Note - (a.) LS - Lump sum.

HULL & ASSOCIATES, INC.

TABLE 2

2002 BILLING RATES

Principal	\$90.00 - \$175.00/hr.
Senior Project Manager	\$90.00 - \$150.00/hr.
Project Manager	\$70.00 - \$120.00/hr.
Senior Hydrogeologist	\$70.00 - \$120.00/hr.
Hydrogeologist II	\$50.00 - \$80.00/hr.
Hydrogeologist I	\$40.00 - \$60.00/hr.
Senior Scientist	\$70.00 - \$120.00/hr.
Scientist II	\$50.00 - \$85.00/hr.
Scientist I	\$40.00 - \$60.00/hr.
Senior Engineer	\$70.00 - \$110.00/hr.
Engineer II	\$55.00 - \$80.00/hr.
Engineer I	\$45.00 - \$70.00/hr.
Senior CAD Operator	\$45.00 - \$60.00/hr.
CAD Operator II	\$40.00 - \$55.00/hr.
CAD Operator I	\$35.00 - \$50.00/hr.
Senior Technician	\$45.00 - \$85.00/hr.
Technician II	\$35.00 - \$60.00/hr.
Technician I	\$25.00 - \$55.00/hr.
Government & Public Relations	\$55.00 - \$105.00/hr.
Clerical	\$25.00 - \$50.00/hr.

NOTES:

1. Hourly rates for personnel apply to actual time spent in meetings concerning the project, preparing for such meetings, project coordination time, design activities, field and office investigations, and travel time when job-related.
2. Travel mileage by ground transportation is billed at \$0.365 per mile.
3. Air transportation fees are billed directly with no mark-up. Travel time is typically billed only for that time actually spent flying to/from the project location and does not include layovers, delays, etc.
4. Billing rates reflect an average range of salaries for each job classification. Rates are typically reviewed and adjusted periodically to account for salary increases and other changes.
5. Miscellaneous expenses such as reproduction, mylars, vellums, bluelines, shipping, meals & lodging associated with travel or extended field activities, etc. are not subject to a mark-up.
6. \$3.00 per man hour will be added to actual hours worked to cover internal Hull direct costs such as telephone, long distance, copies, postage and computer resources.
7. Subcontractors' fees will be billed to the Client at a rate equal to the subcontractor fee multiplied by 1.05 to recover Hull's contractual liability risk and associated operational expense.
8. Field equipment rented from outside vendors will be billed directly with no mark-up. If field equipment owned by Hull is used on the client's project, competitive market-equivalent rates will be billed for daily or weekly rental.

ATTACHMENT C

Task Order

TASK ORDER SHEET

DATE: November 15, 2002

PO#: _____

HAI PROJECT CODE: SBI013

Subject to the establishment and mutual endorsement of a contract establishing terms and conditions with the Client, Hull will provide work described in the attached Hull document SBI013.100.0008:

The tasks for the Scope of Work listed in document SBI013.200.0012 include sampling/analysis of potential groundwater and analysis for VOCs using an existing monitoring well on Peterson Printing property and installation of direct-push borings and sampling of groundwater on Peterson Printing property and Area C. The basis for the sampling is to identify one or more potential source areas and to provide additional delineation of the VOC plume on Area C.

Total Estimate for Scope of Work \$12,157

City of South Bend

PROJECT AUTHORIZATION: _____

DATE : _____

(Please mail this page to Hull)