

M-0001

**Quality Environmental Professionals, Inc.**

May 10, 2007

Ms. Laura Wagley
Community Development and Long Term Planning
City of Mishawaka
600 East Third Street
Mishawaka, Indiana 46544

Re: Limited Phase II Sampling and Analysis Report
Former Union Street Sunoco Service Station
1126 South Union Street
Mishawaka, Indiana
QEPI Project #07-01-05

Dear Ms. Wagley:

Quality Environmental Professionals, Inc. (Qepi) is pleased to provide the City of Mishawaka with this Limited Phase II Sampling and Analysis Report. This report documents the site investigation activities completed at the Former Union Street Sunoco Service Station located at 1126 South Union Street in Mishawaka, Indiana. The objective of this Limited Sampling and Analysis investigation was to determine the presence or absence of chemical impacts to soil and/or groundwater resulting from the historic usage of the property as a gasoline service station and automobile garage repair shop. Provided below is a background summary followed by a description of the Limited Sampling and Analysis activities, the findings, conclusions and recommendations. A site map is provided as Figure 1.

Background

A Phase I Environmental Site Assessment (Phase I ESA) completed by Qepi in March 2007 indicated that the site had formerly operated as Union Street Sunoco, a gasoline service station and automobile repair shop. The site ceased operation as a gasoline service station in 1995 and continued operation as an automotive repair shop until 2005, when it was vacated. The site was originally developed for use as a service station in 1932. Prior to 1932 the site was undeveloped.

Limited Phase II Investigation

Prior to subsurface investigation activities, Qepi contacted the Indiana Underground Plant Protection Service (IUPPS) to locate and mark site underground utility conduits/lines. Qepi prepared a health and safety plan (HASP) under the Occupational Health & Safety Administration (OSHA) 29 CFR 1910.120.

On April 13, 2007, Qepi advanced 5 direct-push soil borings to a maximum depth of 16 feet below ground surface (bgs). Soil boring B-1 was advanced along the eastern portion of the site, near the former pump island feeder lines. Soil boring SB-2 was advanced north of the former



May 13, 2007

Ms. Laura Wagley

Re: Limited Phase II Sampling and Analysis Report

Former Union Street Sunoco Service Station

1126 South Union Street

Mishawaka, Indiana 46544

Page 2 of 4

pump island area. Soil borings SB-3 and SB-4 were advanced inside the repair garage to address potential impacts in association with hydraulic lifts operated at the former automotive repair shop. Soil boring SB-5 was advanced in the western portion of site adjacent to the waste oil aboveground storage tank (AST). Soil boring locations are illustrated on Figure 2.

Soil sample intervals were continuously logged and the soil lithology was described on Qepi boring logs. Soils in the area of investigation consisted of 10YR 4/2 dark grayish brown sandy clay loam from just below the surface to approximately 6 feet bgs. This soil was underlain by a 10YR 3/3 dark brown Sandy Loam and Sandy Clay, which was further underlain by a 10YR 5/3 brown, fine to medium grained Sand with gravel. The soil samples were inspected for indications of chemical impacts, such as staining and odors. The soil samples collected from the borings were continuously screened for soil vapors using a pre-calibrated MSA Passport Photo-ionization Detector (PID) Organic Vapor Monitor. All the soil borings except SB-5 exhibited staining, petroleum odors and elevated PID readings. Groundwater was encountered in depths ranging from 4.5 feet bgs (boring SB-1), to 10.5 feet bgs (boring SB-4). Soil boring logs are provided in Attachment A.

The soil sample interval at each soil boring location that exhibited the highest PID reading was submitted to ENVision Laboratories, Inc. (ENVision) in Indianapolis, Indiana for laboratory analysis. Soil samples collected from borings SB-1 and SB-2 were analyzed for total petroleum hydrocarbons (TPH) gasoline range organics (GRO) using United States Environmental Protection Agency (USEPA) SW-846 Method 8015 and for benzene, toluene, ethylbenzene, xylene and methyl-tert butyl ether (BTEX/MTBE) using USEPA SW-846 Method 8260. Soil samples collected for borings SB-3 and SB-4 were analyzed for TPH GRO and extended range organics (ERO) using USEPA SW-846 Method 8015, volatile organic compounds (VOCs) using USEPA SW-846 Method 8260, semi-volatile organic compounds (SVOCs) using USEPA SW-846 Method 8270, polychlorinated biphenyls (PCBs) using USEPA SW-846 Method 8082 and Resource Recovery and Conservation Act (RCRA) Metals. The soil sample collected from soil boring SB-5 was analyzed for TPH (GRO/ERO) and VOCs. In addition to the soil samples collected, groundwater samples were collected from each of the borings advanced. Groundwater samples collected from boring SB-1 and SB-2 were submitted for laboratory analysis of TPH (GRO) and BTEX/MTBE. Groundwater samples collected from borings SB-3 and SB-4 were submitted for laboratory analysis of TPH (GRO/ERO), VOCs, SVOCs, PCBs and metals. The groundwater sample collected for boring SB-5 was submitted for laboratory analysis of TPH (GRO/ERO) and VOCs. The samples were placed into laboratory-prepared sample containers and stored in a secured, iced cooler (at 4°C) using Qepi's chain of custody protocol.

Soil Analytical Results

One of the soil samples submitted, SB-3, exhibited TPH (ERO) impacts above the Indiana Department of Environmental Management (IDEM) Risk Integrated System of Closure (RISC) Residential Cleanup objectives. None of the other soil samples collected exhibited impacts above IDEM RISC Residential or Industrial Cleanup objectives. Soil analytical results are illustrated on Figures 3, 4 and 5 and summarized in Tables 1, 2 and 3. The laboratory Certificate of Analysis is



May 13, 2007
Ms. Laura Wagley
Re: Limited Phase II Sampling and Analysis Report
Former Union Street Sunoco Service Station
1126 South Union Street
Mishawaka, Indiana 46544
Page 3 of 4

provided as Attachment B.

Groundwater Analytical Results

Groundwater samples submitted from borings SB-1, SB-2 and SB-3 exhibited impacts above the IDEM RISC Residential Cleanup objectives for TPH (GRO). The groundwater sample collected from SB-1 exceeded RISC Residential Cleanup objectives for benzene. Additionally, the groundwater sample from SB-2 exhibited impacts above RISC Residential cleanup objectives for benzene and ethylbenzene and the sample collected from SB-3 exhibited impacts above RISC Residential cleanup objective for TPH (ERO), naphthalene, 1,2,4-Trimethylbenzene and 1,3,5-Trimethylbenzene. The groundwater sample collected from soil boring SB-4 exhibited impacts above residential cleanup goals for TPH (ERO). In addition, RISC Industrial Cleanup objectives were exceeded for TPH (GRO) in boring SB-2 and TPH (ERO) in boring SB-3. No metals or PCBs were detected above RISC Residential Cleanup objectives. Soil analytical results are illustrated on Figure 6, 7 and 8, and summarized in Tables 4, 5 and 6. The laboratory Certificate of Analysis is provided as Attachment C.

Conclusion & Recommendations

Qepi completed the limited sampling and analysis investigation at the site that included the advancement of 5 soil borings and analysis of soil and groundwater samples from the site. The objective of this Limited Sampling and Analysis investigation was to determine the presence or absence of chemical impacts to soil and/or groundwater resulting from the historic usage of the property as a gasoline service station and automobile repair shop. This limited sampling was not intended to delineate the nature and/or the extent of impacts.

Based upon the results of this limited investigation, it appears that petroleum hydrocarbon impacts exceeding RISC Residential and Industrial Goals are present in association with the historical usage of the property. Qepi recommends additional sampling, including the installation of groundwater monitoring wells, be conducted in order to delineate the extent of soil and groundwater impacts on site.

Report Disclaimer

In preparing this Limited Sampling and Analysis Report, Qepi has applied generally-accepted professional practices and standards and exercised its professional judgment, skill, and care in a manner consistent with that of other professionals performing similar work under similar conditions. Please note that the results of any investigation can vary with time and location. All conclusions and opinions concerning the site are based on research and investigations of the site by Qepi, unless as otherwise noted in the report. Qepi is not responsible for unrecorded data pertaining to the site. Furthermore, Qepi makes no warranties, expressed or implied, as to the fitness of the site for any particular purpose and Qepi is not responsible for independent conclusions or opinions made by others based on this report. Qepi's sampling protocol used for this investigation was for determining the presence or absence of soil and/or groundwater



May 13, 2007

Ms. Laura Wagley

Re: Limited Phase II Sampling and Analysis Report

Former Union Street Sunoco Service Station

1126 South Union Street

Mishawaka, Indiana 46544

Page 4 of 4

impacts. With this in mind, our sampling protocol does not meet the requirements set forth in IDEM guidance for evaluating and characterizing chemical releases. This investigation was limited to the areas illustrated on the figures of this report.

Should you have any questions regarding this letter report, please contact myself or Karla McDonald at (317) 351-4255.

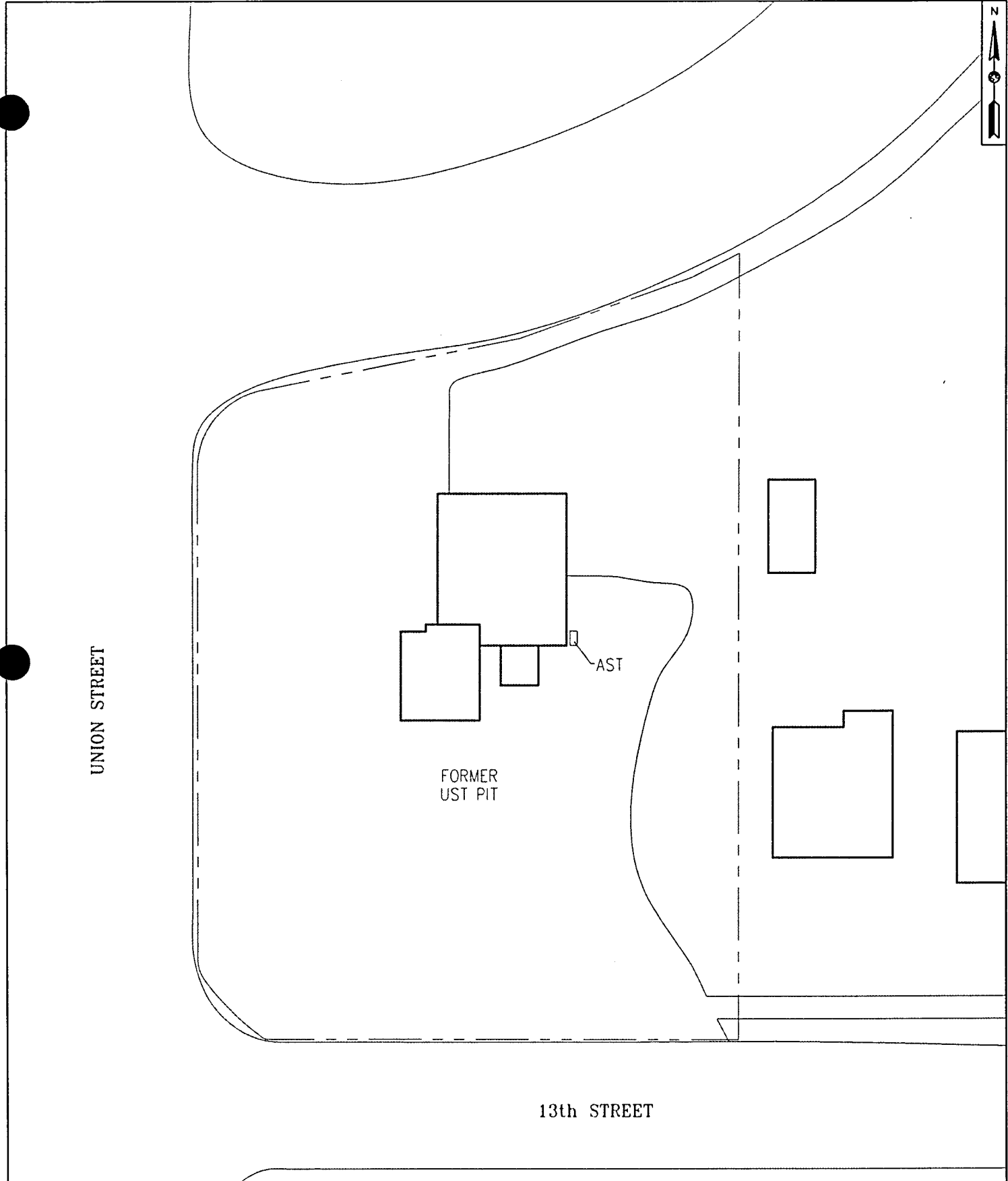
Sincerely,

Nivas R. Vijay
Project Geologist

Karla K. McDonald, CHMM
Vice President of Operations

Figures





UNION STREET

13th STREET

FIGURE 1
SITE MAP

FORMER UNION STREET SUNOCO
1126 SOUTH UNION STREET
MISHAWAKA, INDIANA

PROJECT NO.	DATE
07-01-05	5/9/07
DRAWN BY	SCALE
CWH	1" = 30'
CHECKED BY	SHEET
NRV	1

Qepi QUALITY ENVIRONMENTAL PROFESSIONALS, INC.
 1811 South Franklin Road
 Indianapolis, Indiana 46239



UNION STREET

13th STREET

SB-2

SB-1

SB-4

SB-3

SB-5

AST

FORMER UST PIT

LEGEND

● SOIL BORING



FIGURE 2
SOIL BORING LOCATIONS
FORMER UNION STREET SUNOCO
1126 SOUTH UNION STREET
MISHAWAKA, INDIANA

PROJECT NO. 07-01-05	DATE 5/9/07
DRAWN BY CWH	SCALE 1" = 30'
CHECKED BY NRV	SHEET 1



Depth	4-6'
GRO	<1.1
Benzene	<6
Toluene	<6
Ethylbenzene	83.4
Xylene	138
MTBE	<6

Depth	8-10'
GRO	<1
ERO	122
Benzene	<5
Toluene	<5
Ethylbenzene	<5
Xylene	15
MTBE	<5
Naphthalene	90.9
cis-1,2-dichloroethene	<5
Isopropylbenzene	<5
sec-Butylbenzene	<5
n-Propylbenzene	11.4
1,2,4-Trimethylbenzene	6.84
1,3,5-Trimethylbenzene	73.7
SVOCs	1.52

Depth	6-8'
GRO	2.33
ERO	53
Benzene	<7
Toluene	8.83
Ethylbenzene	271
Xylene	479
MTBE	<7
Naphthalene	18.6
cis-1,2-dichloroethene	<7
Isopropylbenzene	65.7
sec-Butylbenzene	16.9
n-Propylbenzene	124
1,2,4-Trimethylbenzene	258
1,3,5-Trimethylbenzene	161
SVOCs	ND

Depth	4-6'
GRO	<1.9
ERO	<37
Benzene	<9
Toluene	<9
Ethylbenzene	<9
Xylene	<19
MTBE	<9
Naphthalene	<9
cis-1,2-dichloroethene	<9
Isopropylbenzene	<9
sec-Butylbenzene	<9
n-Propylbenzene	<9
1,2,4-Trimethylbenzene	<9
1,3,5-Trimethylbenzene	<9

UNION STREET

SB-2

SB-4

SB-3

SB-5

AST

FORMER UST PIT

SB-1

Depth	2-4'
GRO	<1.1
Benzene	<6
Toluene	<6
Ethylbenzene	<6
Xylene	<11
MTBE	<6

13th STREET

NOTES:
 TPH RESULTS IN PARTS PER MILLION, ALL OTHERS IN PARTS PER BILLIONS
 SAMPLES COLLECTED 4/13/07.
 ND = NON-DETECT

FIGURE 3
 SOIL ANALYTICAL RESULTS
 FORMER UNION STREET SUNOCO
 1126 SOUTH UNION STREET
 MISHAWAKA, INDIANA



PROJECT NO. 07-01-05	DATE 5/9/07
DRAWN BY CWH	SCALE 1"=30'
CHECKED BY NRV	SHEET 1



UNION STREET

Depth	8-10'
Arsenic	<2
Barium	<2
Cadmium	<2
Chromium III	<2
Lead	5.1
Mercury	<1
Selenium	<2
Silver	<2

Depth	6-8'
Arsenic	<3
Barium	32
Cadmium	<3
Chromium III	4.4
Lead	6.9
Mercury	<1
Selenium	<3
Silver	<3

SB-2

SB-1

SB-4

SB-3

SB-5

AST

FORMER UST PIT

13th STREET

NOTES:
RESULTS IN PARTS PER MILLION.
SAMPLES COLLECTED 4/13/07.

LEGEND

● SOIL BORING



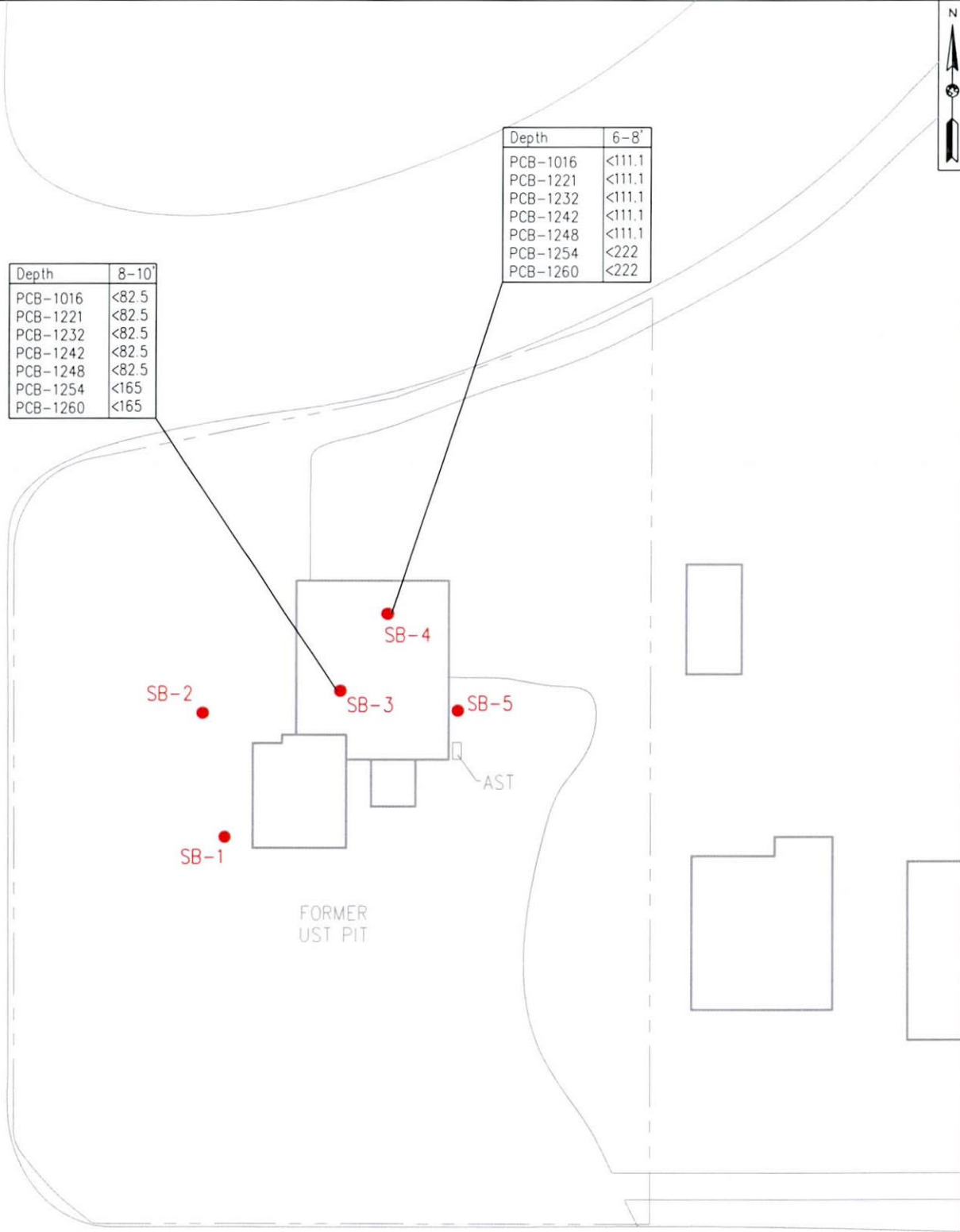
FIGURE 4
METALS IN SOIL
FORMER UNION STREET SUNOCO
1126 SOUTH UNION STREET
MISHAWAKA, INDIANA

PROJECT NO. 07-01-05	DATE 5/9/07
DRAWN BY CWH	SCALE 1" = 30'
CHECKED BY NRV	SHEET 1



Depth	8-10'	6-8'
PCB-1016	<82.5	<111.1
PCB-1221	<82.5	<111.1
PCB-1232	<82.5	<111.1
PCB-1242	<82.5	<111.1
PCB-1248	<82.5	<111.1
PCB-1254	<165	<222
PCB-1260	<165	<222

UNION STREET



FORMER UST PIT

AST

13th STREET

NOTES:
RESULTS IN PARTS PER BILLION.
SAMPLES COLLECTED 4/13/07.

LEGEND
● SOIL BORING



FIGURE 5
PCBs IN SOIL
FORMER UNION STREET SUNOCO
1126 SOUTH UNION STREET
MISHAWAKA, INDIANA

PROJECT NO.	DATE
07-01-05	5/9/07
DRAWN BY	SCALE
CWH	1" = 30'
CHECKED BY	SHEET
NRV	1



GRO	1,830
ERO	2,410
Benzene	<5
Toluene	<5
Ethylbenzene	40.2
Xylene	121
MTBE	<5
Naphthalene	53.8
cis-1,2-dichloroethene	<5
Isopropylbenzene	25.9
sec-Butylbenzene	8.51
n-Propylbenzene	54
1,2,4-Trimethylbenzene	171
1,3,5-Trimethylbenzene	134
2-Methylnaphthalene	28

GRO	<100
ERO	434
Benzene	<5
Toluene	<5
Ethylbenzene	<5
Xylene	5.21
MTBE	<5
Naphthalene	<5
cis-1,2-dichloroethene	<5
Isopropylbenzene	<5
sec-Butylbenzene	<5
n-Propylbenzene	<5
1,2,4-Trimethylbenzene	8.32
1,3,5-Trimethylbenzene	<5
SVOCs	2

GRO	13,400
Benzene	47.1
Toluene	<50
Ethylbenzene	1,130
Xylene	2,480
MTBE	<40

UNION STREET

SB-2

SB-4

SB-3

SB-5

EAST

FORMER UST PIT

SB-1

GRO	1,510
Benzene	6.84
Toluene	<5
Ethylbenzene	53.2
Xylene	192
MTBE	<5

GRO	<100
ERO	<100
Benzene	<5
Toluene	<5
Ethylbenzene	<5
Xylene	<10
MTBE	<5
Naphthalene	<5
cis-1,2-dichloroethene	<5
Isopropylbenzene	<5
sec-Butylbenzene	<5
n-Propylbenzene	<5
1,2,4-Trimethylbenzene	<5
1,3,5-Trimethylbenzene	<5

NOTES:
TPH RESULTS IN PARTS PER MILLION, ALL OTHERS IN PARTS PER BILLIONS
SAMPLES COLLECTED 4/13/07.

13th STREET



FIGURE 6
WATER ANALYTICAL RESULTS
FORMER UNION STREET SUNOCO
1126 SOUTH UNION STREET
MISHAWAKA, INDIANA

PROJECT NO.	DATE
07-01-05	5/9/07
DRAWN BY	SCALE
CWH	1" = 30'
CHECKED BY	SHEET
NRV	1



UNION STREET

13th STREET

Arsenic	<0.01
Barium	<0.01
Cadmium	<0.005
Chromium III	<0.01
Lead	<0.01
Mercury	<0.002
Selenium	<0.01
Silver	<0.05

Arsenic	<0.01
Barium	<0.01
Cadmium	<0.005
Chromium III	<0.01
Lead	<0.01
Mercury	<0.002
Selenium	<0.01
Silver	<0.05

SB-2

SB-1

SB-4

SB-3

SB-5

AST

FORMER UST PIT

NOTES:
RESULTS IN PARTS PER MILLION.
SAMPLES COLLECTED 4/13/07.

LEGEND

● SOIL BORING



FIGURE 7
METALS IN WATER
FORMER UNION STREET SUNOCO
1126 SOUTH UNION STREET
MISHAWAKA, INDIANA

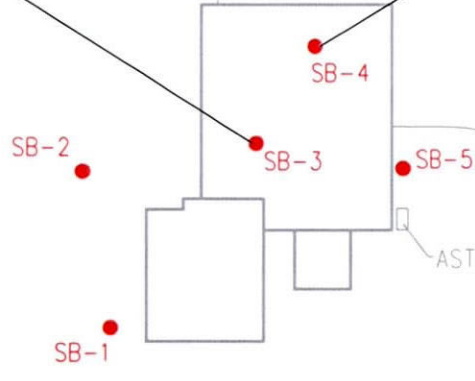
PROJECT NO.	DATE
07-01-05	5/9/07
DRAWN BY	SCALE
CWH	1" = 30'
CHECKED BY	SHEET
NRV	1



PCB-1016	<0.5
PCB-1221	<0.5
PCB-1232	<0.5
PCB-1242	<0.5
PCB-1248	<0.5
PCB-1254	<0.5
PCB-1260	<0.5

PCB-1016	<0.5
PCB-1221	<0.5
PCB-1232	<0.5
PCB-1242	<0.5
PCB-1248	<0.5
PCB-1254	<0.5
PCB-1260	<0.5

UNION STREET



FORMER UST PIT

AST

13th STREET

NOTES:
RESULTS IN PARTS PER BILLION.
SAMPLES COLLECTED 4/13/07.

LEGEND
● SOIL BORING



FIGURE 8
PCBs IN WATER
FORMER UNION STREET SUNOCO
1126 SOUTH UNION STREET
MISHAWAKA, INDIANA

PROJECT NO. 07-01-05	DATE 5/9/07
DRAWN BY CWH	SCALE 1" = 30'
CHECKED BY NRV	SHEET 1

Tables

Table 1
Soil Sample Analytical Results
Former Union Street Sunoco
1126 South Union Street
Mishawaka, Indiana

Sample I.D.	Date	Sample Depth (ft)	TPH Gasoline Range	TPH Extended Range	Benzene	Toluene	Ethylbenzene	Total Xylene	MTBE	Naphthalene	cis-1,2-dichloroethene	Isopropylbenzene (Cumene)	sec-Butylbenzene	n-Propylbenzene	1,2,4-Trimethylbenzene	1,3,5-Trimethylbenzene	SVOCs	
			(ppm)	(ppm)	(ppb)	(ppb)	(ppb)	(ppb)	(ppb)	(ppb)	(ppb)	(ppb)	(ppb)	(ppb)	(ppb)	(ppb)	(ppb)	(ppb)
SB-1	4/13/2007	2-4	<1.1	NA	<6	<6	<6	<11	<6	NA	NA	NA	NA	NA	NA	NA	NA	NA
SB-2	4/13/2007	4-6	<1.1	NA	<6	<6	83.4	138	<6	NA	NA	NA	NA	NA	NA	NA	NA	NA
SB-3	4/13/2007	8-10	<1.0	122	<5	<5	<5	15	<5	90.9	<5	<5	<5	11.4	6.84	73.7	1.52	NA
SB-4	4/13/2007	6-8	2.33	53	<7	8.83	271	479	<7	18.6	<7	65.7	16.9	124	258	161	ND	NA
SB-5	4/13/2007	4-6	<1.9	<37	<9	<9	<9	<19	<9	<9	<9	<9	<9	<9	<9	<9	<9	NA
RISC Default Residential			25	80	34	13,000	12,000	170,000	180	700	400	-	-	-	2,500	610	-	-
RISC Default Industrial			330	1,000	350	160,000	240,000	170,000	3,900	170,000	5,800	-	-	-	170,000	68,000	-	-

Laboratory analysis by ENVision Laboratories, Inc. Indianapolis, Indiana

Results in **bold** exceed IDEM RISC Default Residential Cleanup Goals (January 2004 guidance)

Results Shaded exceed IDEM RISC Default Industrial Cleanup Objectives (January 2004 guidance).

NA = Parameter not analyzed; ND = None Detected

< = result is less than laboratory detection limit

ppb = parts per billion

ppm = parts per million

**Table 2
Metals in Soil
Former Union Street Sunoco
1126 South Union Street
Mishawaka, Indiana**

Sample Location	Date Sampled	Sample Depth (feet)	Arsenic	Barium	Cadmium	Chromium III	Lead	Mercury	Selenium	Silver
SB-3	4/13/2007	8-10	<2	<2	<2	<2	5.1	<1	<2	<2
SB-4	4/13/2007	6-8	<3	32	<3	4.4	6.9	<1	<3	<3
RISC Default Residential closure levels			3.9	1,600	7.5	10,000	81	2	5	31
RISC Default Industrial closure levels			5.8	5,900	77	10,000	230	32	53	87

Notes: Values presented in parts per million (ppm) or mg/kg

Constituents not listed were below the laboratory detection limit

Default Closure levels based on RISC Technical Users Guide, Updated 01/31/06. Amended August 2006.

Bold cell denotes value exceeds RISC Default Residential closure level

Shaded cell denotes value exceeds RISC Default Industrial closure level

Table 3
PCBs in Soil
Former Union Street Sunoco
1126 South Union Street
Mishawaka, Indiana

Sample Location	Date Sampled	Sample Depth (feet)	PCB-1016 (Aroclor 1016)	PCB-1221 (Aroclor 1221)	PCB-1232 (Aroclor 1232)	PCB-1242 (Aroclor 1242)	PCB-1248 (Aroclor 1248)	PCB-1254 (Aroclor 1254)	PCB-1260 (Aroclor 1260)
SB-3	4/13/2007	8-10	<82.5	<82.5	<82.5	<82.5	<82.5	<165	<165
SB-4	4/13/2007	6-8	<111.1	<111.1	<111.1	<111.1	<111.1	<222	<222
RISC Default Residential closure			1,800	1,800	1,800	1,800	1,800	1,800	1,800
RISC Default Industrial closure			5,300	5,300	5,300	5,300	5,300	5,300	5,300

Notes: Values presented in parts per billion (ppb) or ug/kg

Constituents not listed were below the laboratory detection limit

Default Closure levels based on RISC Technical Users Guide, Updated 01/31/06. Amended August 2006.

Bold cell denotes value exceeds RISC Default Residential closure level

Shaded cell denotes value exceeds RISC Default Industrial closure level

Table 4
Groundwater Analytical Results
Former Union Street Sunoco
1126 South Union Street
Mishawaka, Indiana

Sample I.D.	Date	TPH Gasoline Range	TPH Extended Range	Benzene	Toluene	Ethylbenzene	Total Xylene	MTBE	Naphthalene	cis-1,2-dichloroethene	Isopropylbenzene (Cumene)	sec-Butylbenzene	n-Propylbenzene	1,2,4-Trimethylbenzene	1,3,5-Trimethylbenzene	2-Methylnaphthalene
		(ppm)	(ppm)	(ppb)	(ppb)	(ppb)	(ppb)	(ppb)	(ppb)	(ppb)	(ppb)	(ppb)	(ppb)	(ppb)	(ppb)	(ppb)
SB-1	4/13/2007	1,510	NA	6.84	<5	53.2	192	<5	NA	NA	NA	NA	NA	NA	NA	NA
SB-2	4/13/2007	13,400	NA	47.1	<50	1,130	2,480	<40	NA	NA	NA	NA	NA	NA	NA	NA
SB-3	4/13/2007	1,830	2,410	<5	<5	40.2	121	<5	53.8	<5	25.9	8.51	54	171	134	28
SB-4	4/13/2007	<100	434	<5	<5	<5	5.21	<5	2.0	<5	<5	<5	<5	8.32	<5	2
SB-5	4/13/2007	<100	<100	<5	<5	<5	<10	<5	<5	<5	<5	<5	<5	<5	<5	NA
RISC Default Residential Cleanup Objective		220	80	5	1,000	700	10,000	40	8.3	70	830.0	-	-	16.0	16.0	31
RISC Default Industrial Cleanup Objective		3,000	1,100	52	20,000	10,000	20,000	870	170	1,000	10,000.0	-	-	5,100	5,100	410

Laboratory analysis by ENVision Laboratories, Inc. Indianapolis, Indiana
Results in **bold** exceed IDEM RISC Default Residential Cleanup Goals (January 2004 guidance)
Results Shaded exceed IDEM RISC Default Industrial Cleanup Objectives (January 2004 guidance).
NA = Parameter not analyzed
ND = None Detected
< = result is less than laboratory detection limit
ppb = parts per billion
ppm = parts per million

Table 5
Metals in Groundwater
Former Union Street Sunoco
1126 South Union Street
Mishawaka, Indiana

Sample Location	Date Sampled	Arsenic	Barium	Cadmium	Chromium III	Lead	Mercury	Selenium	Silver
SB-3	4/13/2007	<0.01	<0.01	<0.005	<0.01	<0.01	<0.002	<0.01	<0.05
SB-4	4/13/2007	<0.01	<0.01	<0.005	<0.01	<0.01	<0.002	<0.01	<0.05
RISC Default Residential closure levels		0.01	2.0	0.005	0.1	0.015	0.002	0.05	0.05
RISC Default Industrial closure levels		0.01	7.2	0.051	150	0.042	0.031	0.51	0.50

Notes: All values presented in parts per million (ppm) or mg/l except Thallium, which is presented in parts per billion (ppb)

Constituents not listed were below the laboratory detection limit

Default Closure levels based on RISC Technical Users Guide, Updated 01/31/06. Amended August 2006.

Bold cell denotes value exceeds RISC Default Residential closure level

Shaded cell denotes value exceeds RISC Default Industrial closure level

Table 6
PCBs in Groundwater
Former Union Street Sunoco
1126 South Union Street
Mishawaka, Indiana

Sample Location	Date Sampled	PCB-1016 (Aroclor 1016)	PCB-1221 (Aroclor 1221)	PCB-1232 (Aroclor 1232)	PCB-1242 (Aroclor 1242)	PCB-1248 (Aroclor 1248)	PCB-1254 (Aroclor 1254)	PCB-1260 (Aroclor 1260)
SB-3	4/13/2007	<0.50	<0.50	<0.50	<0.50	<0.50	<0.50	<0.50
SB-4	4/13/2007	<0.50	<0.50	<0.50	<0.50	<0.50	<0.50	<0.50
RISC Default Residential closure levels		0.5	0.5	0.5	0.5	0.5	0.5	0.5
RISC Default Industrial closure levels		1.4	1.4	1.4	1.4	1.4	1.4	1.4
<p>Notes: Values presented in parts per billion (ppb) or ug/l Constituents not listed were below the laboratory detection limit Default Closure levels based on RISC Technical Users Guide, Updated 01/31/06 Bold cell denotes value exceeds RISC Default Residential closure level Shaded cell denotes value exceeds RISC Default Industrial closure level</p>								

Attachment A



Project Number: **07-01-05**

Client: City of Mishawaka	Drilling Method: GeoProbe
Project: Former Union Street Sunoco	Sampling Method: Continuous
Location: 1126 South Union Street, Mishawaka, Indiana	Weather: 55°F, sunny
Logged By: NRV	Time Terminated: 8:30
Drilling Company: D&T Drilling	Drillers: Dave
	Completion Date: April 13, 2007

Depth (feet)	SOIL DESCRIPTION	Sample	REMARKS	PID (ppm)	Depth (feet)
0 - 2"	Asphalt 2"				
1	10YR 4/2 dark grayish brown, SANDY FILL, with gravel, moist very moist at 3'	1	Soil sample at 2-4' submitted for laboratory analysis	0	1
2					2
3		2		1.9	3
4					4
5	10YR 3/3 dark brown, SANDY CLAY, with gravel, saturated at 4.5'	3		4.2	5
6					6
7	10YR 5/3 brown, SAND, fine to medium grained, with dark gray mottles, petroleum odor, wet	4		347.9	7
8					8
9		5		510.3	9
10					10
11	10YR 4/1 dark gray, SAND, fine to medium grained, wet	6	Water sample submitted for laboratory analysis	69.7	11
12	Bottom of Boring at 12 ft				12

BORING LOG 07-01-05-CPJ BORING LOG.GDT 5/15/07



Project Number: **07-01-05**

Client: City of Mishawaka	Drilling Method: GeoProbe
Project: Former Union Street Sunoco	Sampling Method: Continuous
Location: 1126 South Union Street, Mishawaka, Indiana	Weather: 55°F, sunny
Logged By: NRV	Time Terminated: 9:10
Drilling Company: D&T Drilling	Drillers: Dave
	Completion Date: April 13, 2007

Depth (feet)	SOIL DESCRIPTION	Sample	REMARKS	PID (ppm)	Depth (feet)
0	Asphalt 2"				
0 - 2	10YR 4/2 dark grayish brown, SANDY FILL, with gravel, moist very moist at 3'	1		0	2
2 - 4	10YR 3/2 very dark grayish brown, SANDY LOAM FILL, with gravel, slight odor, moist	2		97	4
4 - 6	10YR 3/2 very dark grayish brown, SANDY FILL, with gravel, wet	3	Soil sample at 4-6' submitted for laboratory analysis	101.7	6
6 - 8	10YR 4/2 dark grayish brown, SAND, fine to medium grained, slight odor, very wet saturated at 9'	4		87.8	8
8 - 10		5		360.1	10
10 - 12	10YR 4/1 dark gray, SAND, fine to medium grained, with gravel, slight odor	6		1057.3	12
12 - 14		7		537.9	14
14 - 16	10YR 4/1 dark gray, SAND, medium to coarse grained, with gravel, saturated	8	Water sample submitted for laboratory analysis	140.1	16
16	Bottom of Boring at 16 ft				

BORING LOG 07-01-05 SB-2 BORING LOG GDT 5/15/07



QUALITY ENVIRONMENTAL
PROFESSIONALS, INC.

1611 South Franklin Road
Indianapolis, Indiana

LOG OF: **SB-3**
(1 of 1)

M1.224

Project Number: **07-01-05**

Client: City of Mishawaka		Drilling Method: GeoProbe
Project: Former Union Street Sunoco		Sampling Method: Continuous
Location: 1126 South Union Street, Mishawaka, Indiana		Weather: 55°F, sunny
Logged By: NRV		Time Terminated: 10:20
Drilling Company: D&T Drilling	Drillers: Dave	Completion Date: April 13, 2007

Depth (feet)	SOIL DESCRIPTION	Sample	REMARKS	PID (ppm)	Depth (feet)
0	Concrete				
0 - 2	10YR 4/4 dark yellowish brown, SANDY FILL, with gravel, moist	1		2.3	2
2 - 4	10YR 5/3 brown, SAND, fine to medium grained, with gravel, moist	2		1	4
4 - 6	10YR 3/3 dark brown, SANDY LOAM, with gravel, wet	3		0	6
6 - 8	10YR 5/3 brown, SAND, fine to medium grained, wet	4		1.7	8
8 - 10	10YR 4/2 dark grayish brown, SAND, fine to medium grained, with very dark gray mottling, very wet, odor	5	Soil sample at 8-10' submitted for laboratory analysis	107.9	10
10 - 12	10YR 4/2 dark grayish brown, SAND, fine to medium grained, saturated at 10', odor	6		112.9	12
12 - 14	10YR 4/1 dark gray, SAND, fine to coarse grained, with gravel, saturated	7		87	14
14 - 16		8	Water sample submitted for laboratory analysis	23.2	16
16	Bottom of Boring at 16 ft				16

BORING LOG 07-01-05 PJ BORING LOG.GDT 5/15/07



QUALITY ENVIRONMENTAL
PROFESSIONALS, INC.

1611 South Franklin Road
Indianapolis, Indiana

LOG OF: **SB-4**
(1 of 1)

M1.225

Project Number: **07-01-05**

Client: City of Mishawaka	Drilling Method: GeoProbe
Project: Former Union Street Sunoco	Sampling Method: Continuous
Location: 1126 South Union Street, Mishawaka, Indiana	Weather: 55°F, sunny
Logged By: NRV	Time Terminated: 11:35
Drilling Company: D&T Drilling	Drillers: Dave
	Completion Date: April 13, 2007

Depth (feet)	SOIL DESCRIPTION	Sample	REMARKS	PID (ppm)	Depth (feet)
	Concrete				
2	10YR 4/3 brown, SANDY, fine to medium grained, moist	1		0	2
4	10YR 4/4 dark yellowish brown, SAND LOAM, with gravel, moist asphalt debris at 4'	2		0	4
6	10YR 5/3 brown, SAND, fine to medium grained, wet	3		0	6
8	10YR 3/2 very dark grayish brown, CLAY LOAM, with organics, slight odor	4	Soil sample at 6-8' submitted for laboratory analysis	71.4	8
10	10YR 4/2 dark grayish brown, SAND, fine to medium grained, with gravel, moist, slight odor, very wet	5		10.5	10
12	10YR 6/3 pale brown, SAND, fine to medium grained, with gravel, saturated at 10.5	6		2	12
14	10YR 4/1 dark gray, SAND, fine to coarse grained, with gravel, saturated	7		11.2	14
16	Bottom of Boring at 16 ft	8	Water sample submitted for laboratory analysis	1.9	16

BORING LOG 07-01-05 PROJ BORING LOG.GDT 5/15/07



QUALITY ENVIRONMENTAL
PROFESSIONALS, INC.

1611 South Franklin Road
Indianapolis, Indiana

LOG OF: **SB-5**
(1 of 1)

Project Number: **07-01-05**

Client: City of Mishawaka	Drilling Method: GeoProbe
Project: Former Union Street Sunoco	Sampling Method: Continuous
Location: 1126 South Union Street, Mishawaka, Indiana	Weather: 55°F, sunny
Logged By: NRV	Time Terminated: 12:40
Drilling Company: D&T Drilling	Drillers: Dave
	Completion Date: April 13, 2007

Depth (feet)	SOIL DESCRIPTION	Sample	REMARKS	PID (ppm)	Depth (feet)
0 - 2	Topsoil/organics/concrete	1		45	2
2 - 4	10YR 4/3 brown, SAND, fine to medium grained, very wet saturated at 4'	2		2.1	4
4 - 6	10YR 3/1 very dark gray, CLAY LOAM, moist	3	Soil sample at 4-6' submitted for laboratory analysis	56.4	6
6 - 8	10YR 5/6 yellowish brown, SAND, medium to coarse grained, with gravel, wet	4		1.9	8
8 - 10	10YR 6/3 pale brown, SAND, fine to medium grained, with gravel, very wet saturated at 10.5'	5		2.4	10
10 - 12		6			12
12 - 14	10YR 4/2 dark grayish brown, SAND, fine to medium grained, saturated	7		3.2	14
14 - 16	10YR 6/3 pale brown, SAND, medium to coarse grained, with gravel, saturated	8	Water sample submitted for laboratory analysis	1.9	16
16	Bottom of Boring at 16 ft				

BORING LOG 07-01-05 D&T DRILLING LOG.GDT 5/15/07

Attachment B



ENVision Laboratories, Inc.
1439 Sadlier Circle West Drive
Indianapolis, IN 46239
Tel: 317.351.8632
Fax: 317.351.8639
www.envisionlaboratories.com

Mr. Nivas Vijay
QEPI
1611 South Franklin Road
Indianapolis, IN 46239

May 9, 2007

ENVision Project Number: 2007-699
Client Project Name: 07-01-05/Former Union St. Sunoco

Dear Mr. Vijay,

Please find the attached analytical report for the samples received April 16, 2007. All test methods performed were fully compliant with local, state, and federal EPA methods unless otherwise noted. The project was analyzed as requested on the enclosed chain of custody record. Please review the comments section for additional information about your results or Quality Control data. Metals analyses are not included in the NELAC certification.

Feel free to contact me if you have any questions or comments regarding your analytical report or service.

Thank you for your business. ENVision Laboratories looks forward to working with you on your next project.

Yours Sincerely,

A handwritten signature in cursive script that reads "David Norris".

David Norris

Client Services Manager
ENVision Laboratories, Inc.

IL ELAP / NELAC Accreditation # 100454





ENVision Laboratories, Inc.
 1439 Sadlier Circle West Drive
 Indianapolis, IN 46239
 Tel: 317.351.8632
 Fax: 317.351.8639
 www.envisionlaboratories.com

Client Name: QEPI
Project ID: Former Union St. Sunoco
Client Project Manager: Nivas Vijay
ENVision Project Number: 2007-699

Analytical Method: 8260/BTEX/MTBE
Prep Method: 5035
Analytical Batch: 041807VSB

Client Sample ID: SB-1 (2-4) **Sample Collection Date/Time:** 4/13/07 08:40
Envision Sample Number: 7-4423 **Sample Received Date/Time:** 4/16/07 08:45
Sample Matrix: soil

<u>Compounds</u>	<u>Sample Results (ug/kg)</u>	<u>Reporting Limit (ug/kg)</u>	<u>Flags</u>
Benzene	< 6	6	
Toluene	< 6	6	
Ethylbenzene	< 6	6	
Xylene, M&P	< 6	6	
Xylene, Ortho	< 6	6	
Xylenes, Total	< 11	11	
Methyl-tert-butyl-ether	< 6	6	
Dibromofluoromethane (surrogate)	110%		
1,2-Dichloroethane-d4 (surrogate)	123%		
Toluene-d8 (surrogate)	108%		
4-bromofluorobenzene (surrogate)	90%		
Analysis Date/Time:	04/19/07/02:17		
Analyst Initials	tjg		
Percent Solids:	88%		

Results reported on dry weight basis.



ENVision Laboratories, Inc.
 1439 Sadlier Circle West Drive
 Indianapolis, IN 46239
 Tel: 317.351.8632
 Fax: 317.351.8639
 www.envisionlaboratories.com

Client Name: QEPI
Project ID: Former Union St. Sunoco
Client Project Manager: Nivas Vijay
ENVision Project Number: 2007-699
Analytical Method: 8015 TPH Gasoline Range
Prep Method: 5035
Analytical Batch: 041907GS
Client Sample ID: SB-1 (2-4) **Sample Collection Date/Time:** 4/13/07 08:40
Envision Sample Number: 7-4423 **Sample Received Date/Time:** 4/16/07 08:45
Sample Matrix: soil

<u>Compounds</u>	<u>Sample Results (mg/kg)</u>	<u>Reporting Limit (mg/kg)</u>	<u>Flags</u>
TPH-Gasoline	< 1.1	1.1	
4-bromofluorobenzene (surrogate)	110%		
Analysis Date/Time:	04/20/07/02:07		
Analyst Initials	tjg		
Percent Solids	88%		

All results reported on dry weight basis.



ENVision Laboratories, Inc.
 1439 Sadler Circle West Drive
 Indianapolis, IN 46239
 Tel: 317.351.8632
 Fax: 317.351.8639
 www.envisionlaboratories.com

Client Name: QEPI

Project ID: Former Union St. Sunoco

Client Project Manager: Nivas Vijay

ENVision Project Number: 2007-699

Client Sample ID: SB-1 (2-4) **Sample Collection Date/Time:** 4/13/07 08:40

Envision Sample Number: 7-4423 **Sample Received Date/Time:** 4/16/07 08:45

Sample Matrix: soil

<u>Analyte</u>	<u>Sample Results</u>	<u>Flags</u>	<u>Method</u>
Percent Moisture	12.0%		1684
Percent Solids	88.0%		1684
Analysis Date:	4/20/07		
Analyst Initials	kma		



ENVision Laboratories, Inc.
 1439 Sadler Circle West Drive
 Indianapolis, IN 46239
 Tel: 317.351.8632
 Fax: 317.351.8639
 www.envisionlaboratories.com

Client Name: QEPI
Project ID: Former Union St. Sunoco
Client Project Manager: Nivas Vijay
ENVision Project Number: 2007-699

Analytical Method: 8260/BTEX/MTBE
Prep Method: 5035
Analytical Batch: 041807VS

Client Sample ID: SB-2 (4-6) **Sample Collection Date/Time:** 4/13/07 09:20
Envision Sample Number: 7-4424 **Sample Received Date/Time:** 4/16/07 08:45
Sample Matrix: soil

<u>Compounds</u>	<u>Sample Results (ug/kg)</u>	<u>Reporting Limit (ug/kg)</u>	<u>Flags</u>
Benzene	< 6	6	
Toluene	< 6	6	
Ethylbenzene	83.4	6	
Xylene, M&P	138	6	
Xylene, Ortho	< 6	6	
Xylenes, Total	138	11	
Methyl-tert-butyl-ether	< 6	6	
Dibromofluoromethane (surrogate)	121%		
1,2-Dichloroethane-d4 (surrogate)	100%		
Toluene-d8 (surrogate)	84%		
4-bromofluorobenzene (surrogate)	114%		
Analysis Date/Time:	04/19/07/02:38		
Analyst Initials	tjg		
Percent Solids:	88%		

Results reported on dry weight basis.



ENVision Laboratories, Inc.
 1439 Sadlier Circle West Drive
 Indianapolis, IN 46239
 Tel: 317.351.8632
 Fax: 317.351.8639
 www.envisionlaboratories.com

Client Name: QEPI
Project ID: Former Union St. Sunoco
Client Project Manager: Nivas Vijay
ENVision Project Number: 2007-699
Analytical Method: 8015 TPH Gasoline Range
Prep Method: 5035
Analytical Batch: 041907GS
Client Sample ID: SB-2 (4-6) **Sample Collection Date/Time:** 4/13/07 09:20
Envision Sample Number: 7-4424 **Sample Received Date/Time:** 4/16/07 08:45
Sample Matrix: soil

<u>Compounds</u>	<u>Sample Results (mg/kg)</u>	<u>Reporting Limit (mg/kg)</u>	<u>Flags</u>
TPH-Gasoline	< 1.1	1.1	
4-bromofluorobenzene (surrogate)	104%		
Analysis Date/Time:	04/20/07/02:46		
Analyst Initials	tjg		
Percent Solids	88%		

All results reported on dry weight basis.



ENVision Laboratories, Inc.
 1439 Sadlier Circle West Drive
 Indianapolis, IN 46239
 Tel: 317.351.8632
 Fax: 317.351.8639
 www.envisionlaboratories.com

Client Name: QEPI
Project ID: Former Union St. Sunoco
Client Project Manager: Nivas Vijay
ENVision Project Number: 2007-699

Client Sample ID: SB-2 (4-6) **Sample Collection Date/Time:** 4/13/07 09:20
Envision Sample Number: 7-4424 **Sample Received Date/Time:** 4/16/07 08:45
Sample Matrix: soil

<u>Analyte</u>	<u>Sample Results</u>	<u>Flags</u>	<u>Method</u>
Percent Moisture	12.0%		1684
Percent Solids	88.0%		1684
Analysis Date:	4/20/07		
Analyst Initials	kma		



ENVision Laboratories, Inc.
 1439 Sadlier Circle West Drive
 Indianapolis, IN 46239
 Tel: 317.351.8632
 Fax: 317.351.8639
 www.envisionlaboratories.com

Client Name: QEPI
Project ID: Former Union St. Sunoco
Client Project Manager: Nivas Vijay
ENVision Project Number: 2007-699
Analytical Method: 8260 Volatiles
Prep Method: 5035
Analytical Batch: 041907VS
Client Sample ID: SB-3 (8-10)
Envision Sample Number: 7-4425
Sample Matrix: soil

Sample Collection Date/Time: 4/13/07 10:30
Sample Received Date/Time: 4/16/07 08:45

Compounds	Sample Results (ug/kg)	Rep. Limit (ug/kg)	Flags
Acetone	< 103	103	
Acrolein	< 103	103	
Acrylonitrile	< 103	103	
Benzene	< 5	5	
Bromobenzene	< 5	5	
Bromochloromethane	< 5	5	
Bromodichloromethane	< 5	5	
Bromoform	< 5	5	
Bromomethane	< 5	5	
n-Butanol	< 52	52	
2-Butanone (MEK)	< 10	10	
n-Butylbenzene	< 5	5	
sec-Butylbenzene	< 5	5	
tert-Butylbenzene	< 5	5	
Carbon Disulfide	< 5	5	
Carbon Tetrachloride	< 5	5	
Chlorobenzene	< 5	5	
Chloroethane	< 5	5	
2-Chloroethylvinylether	< 52	52	
Chloroform	< 5	5	
Chloromethane	< 5	5	
2-Chlorotoluene	< 5	5	
4-Chlorotoluene	< 5	5	
1,2-Dibromo-3-chloropropane	< 5	5	
Dibromochloromethane	< 5	5	
1,2-Dibromoethane (EDB)	< 5	5	
Dibromomethane	< 5	5	
1,2-Dichlorobenzene	< 5	5	
1,3-Dichlorobenzene	< 5	5	
1,4-Dichlorobenzene	< 5	5	
trans-1,4-Dichloro-2-butene	< 103	103	
Dichlorodifluoromethane	< 5	5	
1,1-Dichloroethane	< 5	5	
1,2-Dichloroethane	< 5	5	
1,1-Dichloroethene	< 5	5	



ENVision Laboratories, Inc.
 1439 Sadlier Circle West Drive
 Indianapolis, IN 46239
 Tel: 317.351.8632
 Fax: 317.351.8639
 www.envisionlaboratories.com

8260 continued...

Compounds	Sample Results (ug/kg)	Rep. Limit (ug/kg)	Flags
cis-1,2-Dichloroethene	< 5	5	
trans-1,2-Dichloroethene	< 5	5	
1,2-Dichloropropane	< 5	5	
1,3-Dichloropropane	< 5	5	
2,2-Dichloropropane	< 5	5	
1,1-Dichloropropene	< 5	5	
cis-1,3-Dichloropropene	< 5	5	
trans-1,3-Dichloropropene	< 5	5	
Ethylbenzene	< 5	5	
Ethyl methacrylate	< 103	103	
Hexachloro-1,3-butadiene	< 5	5	
n-Hexane	< 10	10	
2-Hexanone	< 10	10	
Iodomethane	< 10	10	
Isopropylbenzene (Cumene)	< 5	5	
p-Isopropyltoluene	< 5	5	
Methylene chloride	< 21	21	
4-Methyl-2-pentanone (MIBK)	< 10	10	
Methyl-tert-butyl-ether	< 5	5	
o-Phthalene	90.9	5	
p-Propylbenzene	11.4	5	
Styrene	< 5	5	
1,1,1,2-Tetrachloroethane	< 5	5	
1,1,2,2-Tetrachloroethane	< 5	5	
Tetrachloroethene	< 5	5	
Toluene	< 5	5	
1,2,3-Trichlorobenzene	< 5	5	
1,2,4-Trichlorobenzene	< 5	5	
1,1,1-Trichloroethane	< 5	5	
1,1,2-Trichloroethane	< 5	5	
Trichloroethene	< 5	5	
Trichlorofluoromethane	< 5	5	
1,2,3-Trichloropropane	< 5	5	
1,2,4-Trimethylbenzene	6.84	5	
1,3,5-Trimethylbenzene	73.7	5	
Vinyl acetate	< 10	10	
Vinyl chloride	< 2	2	
Xylene, M&P	15.0	5	
Xylene, Ortho	< 5	5	
Xylene, Total	15.0	10	
Dibromofluoromethane (surrogate)	53.4	107%	
1,2-Dichloroethane-d4 (surrogate)	51.8	104%	
Toluene-d8 (surrogate)	47	94%	
4-bromofluorobenzene (surrogate)	58.3	117%	
Analysis Date/Time:	04/19/07/03:00		
Analyst Initials	tjg		

Percent Solids: 97%

All results reported on dry weight basis.

Your Projects. Our Passion.



ENVision Laboratories, Inc.
 1439 Sadlier Circle West Drive
 Indianapolis, IN 46239
 Tel: 317.351.8632
 Fax: 317.351.8639
 www.envisionlaboratories.com

Client Name: QEPI
Project ID: Former Union St. Sunoco
Client Project Manager: Nivas Vijay
ENVision Project Number: 2007-699

Analytical Method: 8015 TPH Extended C8-C36
Prep Method: 3550B
Analytical Batch: 042707E

Client Sample ID: SB-3 (8-10) **Sample Collection Date/Time:** 4/13/07 10:30
Envision Sample Number: 7-4425 **Sample Received Date/Time:** 4/16/07 08:45
Sample Matrix: soil

<u>Compounds</u>	<u>Sample Results (mg/kg)</u>	<u>Reporting Limit (mg/kg)</u>	<u>Flags</u>
TPH--Extended C8-C36	122	21	
o-Terphenyl (surrogate)	84%		
Analysis Date/Time:	04-28-07/01:30		
Analyst Initials:	bds		
Date Extracted:	4/20/2007		
Initial Sample Weight:	30.0 g		
Final Volume:	3.0 mL		
Percent Solids	97%		

All results reported on dry weight basis.



ENVision Laboratories, Inc.
 1439 Sadler Circle West Drive
 Indianapolis, IN 46239
 Tel: 317.351.8632
 Fax: 317.351.8639
 www.envisionlaboratories.com

Client Name: QEPI

Project ID: Former Union St. Sunoco

Client Project Manager: Nivas Vijay

ENVision Project Number: 2007-699

Analytical Method: 8015 TPH Gasoline Range
Prep Method: 5035
Analytical Batch: 041907GS

Client Sample ID: SB-3 (8-10) **Sample Collection Date/Time:** 4/13/07 10:30
Envision Sample Number: 7-4425 **Sample Received Date/Time:** 4/16/07 08:45
Sample Matrix: soil

<u>Compounds</u>	<u>Sample Results (mg/kg)</u>	<u>Reporting Limit (mg/kg)</u>	<u>Flags</u>
TPH-Gasoline	< 1.0	1.0	
4-bromofluorobenzene (surrogate)	116%		
Analysis Date/Time:	04/20/07/03:05		
Analyst Initials	tjg		
Percent Solids	97%		

All results reported on dry weight basis.



ENVision Laboratories, Inc.
 1439 Sadlier Circle West Drive
 Indianapolis, IN 46239
 Tel: 317.351.8632
 Fax: 317.351.8639
 www.envisionlaboratories.com

Client Name: QEPI
Project ID: Former Union St. Sunoco
Client Project Manager: Nivas Vijay
ENVision Project Number: 2007-699

Analytical Method: Metals 6010B/7471A
Prep Method: 3050B

Client Sample ID: SB-3 (8-10) **Sample Collection Date/Time:** 4/13/07 10:30
Envision Sample Number: 7-4425 **Sample Received Date/Time:** 4/16/07 08:45
Sample Matrix: soil

<u>Compounds</u>	<u>Sample Results (mg/kg)</u>	<u>Reporting Limit (mg/kg)</u>	<u>Flags</u>
Arsenic	< 2	2	
Barium	< 2	2	
Cadmium	< 2	2	
Chromium	< 2	2	
Copper	5.1	2	
Mercury	< 1	1	
Selenium	< 2	2	
Silver	< 2	2	

Percent Solids 97%

Analysis Date/Time: 4/30/2007 12:37	Hg Analysis Date/Time: 4/30/2007 12:57
Analyst Initials: gjd	Hg Analyst Initials: gjd
Date Digested: 4/28/2007	Date Digested: 4/28/2007
Initial Sample Weight: 1.0 g	Initial Sample Weight: 0.6 g
Final Volume: 50 mL	Final Volume: 50 mL
Analytical Batch: 043007icp	Analytical Batch: 043007hgs

All results reported on dry weight basis.



ENVision Laboratories, Inc.
 1439 Sadlier Circle West Drive
 Indianapolis, IN 46239
 Tel: 317.351.8632
 Fax: 317.351.8639
 www.envisionlaboratories.com

Client Name: QEPI
Project ID: Former Union St. Sunoco
Client Project Manager: Nivas Vijay
ENVision Project Number: 2007-699
Analytical Method: 8270 SVOC
Prep Method: 3550B
Analytical Batch: 042407B

Client Sample ID: SB-3 (8-10) **Sample Collection Date/Time:** 4/13/07 10:30
Envision Sample Number: 7-4425 **Sample Received Date/Time:** 4/16/07 08:45
Sample Matrix: soil

<u>Compounds</u>	<u>Sample Results (mg/kg)</u>	<u>Rep. Limit (mg/kg)</u>	<u>Flags</u>
Acenaphthene	< 0.34	0.34	
Acenaphthylene	< 0.34	0.34	
Aniline	< 0.34	0.34	
Anthracene	< 0.34	0.34	
Benzo(a)anthracene	< 0.34	0.34	
Benzo(a)pyrene	< 0.34	0.34	
Benzo(b)fluoranthene	< 0.34	0.34	
Benzo(g,h,i)perylene	< 0.34	0.34	
Benzo(k)fluoranthene	< 0.34	0.34	
Benzoic Acid	< 1.65	1.65	
Benzyl Alcohol	< 0.68	0.68	
4-Bromophenylphenyl ether	< 0.34	0.34	
Butylbenzylphthalate	< 0.34	0.34	
Carbazole	< 0.68	0.68	
4-Chloro-3-methylphenol	< 0.68	0.68	
4-Chloroaniline	< 0.68	0.68	
bis(2-Chloroethoxy)methane	< 0.34	0.34	
bis(2-Chloroethyl)ether	< 0.34	0.34	
bis(2-Chloroisopropyl)ether	< 0.34	0.34	
2-Chloronaphthalene	< 0.34	0.34	
2-Chlorophenol	< 0.34	0.34	
4-Chlorophenylphenyl ether	< 0.34	0.34	
Chrysene	< 0.34	0.34	
Dibenzo(a,h)anthracene	< 0.34	0.34	
Dibenzofuran	< 0.34	0.34	
1,2-Dichlorobenzene	< 0.34	0.34	
1,3-Dichlorobenzene	< 0.34	0.34	
1,4-Dichlorobenzene	< 0.34	0.34	
1,2-Dichlorobenzidine	< 0.68	0.68	
2,4-Dichlorophenol	< 0.34	0.34	
Diethylphthalate	< 0.34	0.34	
2,4-Dimethylphenol	< 0.34	0.34	
Dimethylphthalate	< 0.34	0.34	
Di-n-butylphthalate	< 0.34	0.34	



ENVision Laboratories, Inc.
 1439 Sadler Circle West Drive
 Indianapolis, IN 46239
 Tel: 317.351.8632
 Fax: 317.351.8639
 www.envisionlaboratories.com

8270 continued...

Compounds	Sample Results (mg/kg)	Rep. Limit (mg/kg)	Flags
4,6-Dinitro-2-methylphenol	< 1.65	1.65	
2,4-Dinitrophenol	< 1.65	1.65	
2,4-Dinitrotoluene	< 0.34	0.34	
2,6-Dinitrotoluene	< 0.34	0.34	
Di-n-octylphthalate	< 0.34	0.34	
bis(2-Ethylhexyl)phthalate	< 0.34	0.34	
Fluoranthene	< 0.34	0.34	
Fluorene	< 0.34	0.34	
Hexachloro-1,3-butadiene	< 0.34	0.34	
Hexachlorobenzene	< 0.34	0.34	
Hexachlorocyclopentadiene	< 0.34	0.34	
Hexachloroethane	< 0.34	0.34	
Indeno(1,2,3-cd)pyrene	< 0.34	0.34	
Isophorone	< 0.34	0.34	
2-Methylnaphthalene	0.91	0.34	
2-Methylphenol (o-Cresol)	< 0.34	0.34	
3&4-Methylphenol	< 0.68	0.68	
Naphthalene	0.61	0.34	
Nitroaniline	< 1.65	1.65	
3-Nitroaniline	< 1.65	1.65	
4-Nitroaniline	< 1.65	1.65	
Nitrobenzene	< 0.34	0.34	
2-Nitrophenol	< 0.34	0.34	
4-Nitrophenol	< 1.65	1.65	
N-Nitroso-di-n-propylamine	< 0.34	0.34	
N-Nitrosodiphenylamine	< 0.34	0.34	
Pentachlorophenol	< 1.65	1.65	
Phenanthrene	< 0.31	0.31	
Phenol	< 0.34	0.34	
Pyrene	< 0.34	0.34	
1,2,4-Trichlorobenzene	< 0.34	0.34	
2,4,5-Trichlorophenol	< 0.34	0.34	
2,4,6-Trichlorophenol	< 0.34	0.34	
2-Fluorophenol (surrogate)	84%		
Phenol-d6 (surrogate)	95%		
Nitrobenzene-d5 (surrogate)	68%		
2-Fluorobiphenyl (surrogate)	89%		
2,4,6-Tribromophenol (surrogate)	94%		
p-Terphenyl-d14 (surrogate)	98%		
Analysis Date/Time:	04-24-07/09:10		
Analyst Initials:	bds		
Date Extracted:	4/20/2007		
Initial Sample Weight:	30.0 g		
Final Volume:	1.0 mL		
Percent Solids	97%		

All results reported on dry weight basis.

Your Projects. Our Passion.



ENVision Laboratories, Inc.
 1439 Sadlier Circle West Drive
 Indianapolis, IN 46239
 Tel: 317.351.8632
 Fax: 317.351.8639
 www.envisionlaboratories.com

Client Name: QEPI
Project ID: Former Union St. Sunoco
Client Project Manager: Nivas Vijay
ENVision Project Number: 2007-699
Analytical Method: 8082 PCB
Prep Method: 3550B
Analytical Batch: 042007PCB
Client Sample ID: SB-3 (8-10) **Sample Collection Date/Time:** 4/13/07 10:30
Envision Sample Number: 7-4425 **Sample Received Date/Time:** 4/16/07 08:45
Sample Matrix: soil

<u>Compounds</u>	<u>Sample Results (ug/kg)</u>	<u>Rep. Limit (ug/kg)</u>	<u>Flags</u>
Aroclor 1016	< 82.5	82.5	
Aroclor 1221	< 82.5	82.5	
Aroclor 1232	< 82.5	82.5	
Aroclor 1242	< 82.5	82.5	
Aroclor 1248	< 82.5	82.5	
Aroclor 1254	< 165	165	
Aroclor 1260	< 165	165	
Tetrachloro-m-xylene (surrogate)	74%		
Decachlorobiphenyl (surrogate)	66%		
Analysis Date/Time:	04/25/07/17:35		
Analyst Initials:	tjg		
Date Extracted:	04/18/07		
Initial Sample Weight:	30.0 g		
Final Volume:	1.0 mL		
Percent Solids	97%		

All results reported on dry weight basis.



ENVision Laboratories, Inc.
 1439 Sadlier Circle West Drive
 Indianapolis, IN 46239
 Tel: 317.351.8632
 Fax: 317.351.8639
 www.envisionlaboratories.com

Client Name: QEPI
Project ID: Former Union St. Sunoco
Client Project Manager: Nivas Vijay
ENVision Project Number: 2007-699

Client Sample ID: SB-3 (8-10) **Sample Collection Date/Time:** 4/13/07 10:30
Envision Sample Number: 7-4425 **Sample Received Date/Time:** 4/16/07 08:45
Sample Matrix: soil

<u>Analyte</u>	<u>Sample Results</u>	<u>Flags</u>	<u>Method</u>
Percent Moisture	3.0%		1684
Percent Solids	97.0%		1684
Analysis Date:	4/20/07		
Analyst Initials	kma		



ENVision Laboratories, Inc.
 1439 Sadler Circle West Drive
 Indianapolis, IN 46239
 Tel: 317.351.8632
 Fax: 317.351.8639
 www.envisionlaboratories.com

Client Name: QEPI
Project ID: Former Union St. Sunoco
Client Project Manager: Nivas Vijay
ENVision Project Number: 2007-699
Analytical Method: 8260 Volatiles
Prep Method: 5035
Analytical Batch: 041907VS
Client Sample ID: SB-4 (6-8)
Envision Sample Number: 7-4426
Sample Matrix: soil

Sample Collection Date/Time: 4/13/07 11:45
Sample Received Date/Time: 4/16/07 08:45

Compounds	Sample Results (ug/kg)	Rep. Limit (ug/kg)	Flags
Acetone	< 139	139	
Acrolein	< 139	139	
Acrylonitrile	< 139	139	
Benzene	< 7	7	
Bromobenzene	< 7	7	
Bromochloromethane	< 7	7	
Bromodichloromethane	< 7	7	
Bromoform	< 7	7	
Bromomethane	< 7	7	
n-Butanol	< 69	69	
2-Butanone (MEK)	< 14	14	
n-Butylbenzene	< 7	7	
sec-Butylbenzene	16.9	7	
tert-Butylbenzene	< 7	7	
Carbon Disulfide	< 7	7	
Carbon Tetrachloride	< 7	7	
Chlorobenzene	< 7	7	
Chloroethane	< 7	7	
2-Chloroethylvinylether	< 69	69	
Chloroform	< 7	7	
Chloromethane	< 7	7	
2-Chlorotoluene	< 7	7	
4-Chlorotoluene	< 7	7	
1,2-Dibromo-3-chloropropane	< 7	7	
Dibromochloromethane	< 7	7	
1,2-Dibromoethane (EDB)	< 7	7	
Dibromomethane	< 7	7	
1,2-Dichlorobenzene	< 7	7	
1,3-Dichlorobenzene	< 7	7	
1,4-Dichlorobenzene	< 7	7	
trans-1,4-Dichloro-2-butene	< 139	139	
Dichlorodifluoromethane	< 7	7	
1,1-Dichloroethane	< 7	7	
1,2-Dichloroethane	< 7	7	
1,1-Dichloroethene	< 7	7	



ENVision Laboratories, Inc.
 1439 Sadler Circle West Drive
 Indianapolis, IN 46239
 Tel: 317.351.8632
 Fax: 317.351.8639
 www.envisionlaboratories.com

8260 continued...

Compounds	Sample Results (ug/kg)	Rep. Limit (ug/kg)	Flags
cis-1,2-Dichloroethene	< 7	7	
trans-1,2-Dichloroethene	< 7	7	
1,2-Dichloropropane	< 7	7	
1,3-Dichloropropane	< 7	7	
2,2-Dichloropropane	< 7	7	
1,1-Dichloropropene	< 7	7	
cis-1,3-Dichloropropene	< 7	7	
trans-1,3-Dichloropropene	< 7	7	
Ethylbenzene	271	7	
Ethyl methacrylate	< 139	139	
Hexachloro-1,3-butadiene	< 7	7	
n-Hexane	< 14	14	
2-Hexanone	< 14	14	
Iodomethane	< 14	14	
Isopropylbenzene (Cumene)	65.7	7	
p-Isopropyltoluene	< 7	7	
Methylene chloride	< 28	28	
4-Methyl-2-pentanone (MIBK)	< 14	14	
Methyl-tert-butyl-ether	< 7	7	
Naphthalene	18.6	7	
Propylbenzene	124	7	
Styrene	< 7	7	
1,1,1,2-Tetrachloroethane	< 7	7	
1,1,2,2-Tetrachloroethane	< 7	7	
Tetrachloroethene	< 7	7	
Toluene	8.83	7	
1,2,3-Trichlorobenzene	< 7	7	
1,2,4-Trichlorobenzene	< 7	7	
1,1,1-Trichloroethane	< 7	7	
1,1,2-Trichloroethane	< 7	7	
Trichloroethene	< 7	7	
Trichlorofluoromethane	< 7	7	
1,2,3-Trichloropropane	< 7	7	
1,2,4-Trimethylbenzene	258	7	
1,3,5-Trimethylbenzene	161	7	
Vinyl acetate	< 14	14	
Vinyl chloride	< 3	3	
Xylene, M&P	400	7	
Xylene, Ortho	79.1	7	
Xylene, Total	408	14	
Dibromofluoromethane (surrogate)	48.2	96%	
1,2-Dichloroethane-d4 (surrogate)	51.6	103%	
Toluene-d8 (surrogate)	45.4	91%	
4-bromofluorobenzene (surrogate)	56.5	113%	

Analysis Date/Time: 04/19/07/03:22

Analyst Initials: tjg

Percent Solids: 72%

All results reported on dry weight basis.

Your Projects. Our Passion.



ENVision Laboratories, Inc.
 1439 Sadlier Circle West Drive
 Indianapolis, IN 46239
 Tel: 317.351.8632
 Fax: 317.351.8639
 www.envisionlaboratories.com

Client Name: QEPI
Project ID: Former Union St. Sunoco
Client Project Manager: Nivas Vijay
ENVision Project Number: 2007-699

Analytical Method: 8015 TPH Extended C8-C36
Prep Method: 3550B
Analytical Batch: 042707E

Client Sample ID: SB-4 (6-8) **Sample Collection Date/Time:** 4/13/07 11:45
Envision Sample Number: 7-4426 **Sample Received Date/Time:** 4/16/07 08:45
Sample Matrix: soil

<u>Compounds</u>	<u>Sample Results (mg/kg)</u>	<u>Reporting Limit (mg/kg)</u>	<u>Flags</u>
TPH--Extended C8-C36	53	28	
o-Terphenyl (surrogate)	76%		
Analysis Date/Time:	04-28-07/01:59		
Analyst Initials:	bds		
Date Extracted:	4/20/2007		
Initial Sample Weight:	30.0 g		
Final Volume:	3.0 mL		
Percent Solids	72%		

All results reported on dry weight basis.



ENVision Laboratories, Inc.
 1439 Sadlier Circle West Drive
 Indianapolis, IN 46239
 Tel: 317.351.8632
 Fax: 317.351.8639
 www.envisionlaboratories.com

Client Name: QEPI

Project ID: Former Union St. Sunoco

Client Project Manager: Nivas Vijay

ENVision Project Number: 2007-699

Analytical Method: 8015 TPH Gasoline Range

Prep Method: 5035

Analytical Batch: 041907GS

Client Sample ID: SB-4 (6-8) **Sample Collection Date/Time:** 4/13/07 11:45

Envision Sample Number: 7-4426 **Sample Received Date/Time:** 4/16/07 08:45

Sample Matrix: soil

<u>Compounds</u>	<u>Sample Results (mg/kg)</u>	<u>Reporting Limit (mg/kg)</u>	<u>Flags</u>
TPH-Gasoline	2.33	1.4	
4-bromofluorobenzene (surrogate)	122%		
Analysis Date/Time:	04/20/07/03:24		
Analyst Initials	tjg		
Percent Solids	72%		

All results reported on dry weight basis.



ENVision Laboratories, Inc.
 1439 Sadlier Circle West Drive
 Indianapolis, IN 46239
 Tel: 317.351.8632
 Fax: 317.351.8639
 www.envisionlaboratories.com

Client Name: QEPI
Project ID: Former Union St. Sunoco
Client Project Manager: Nivas Vijay
ENVision Project Number: 2007-699
Analytical Method: Metals 6010B/7471A
Prep Method: 3050B

Client Sample ID: SB-4 (6-8) **Sample Collection Date/Time:** 4/13/07 11:45
Envision Sample Number: 7-4426 **Sample Received Date/Time:** 4/16/07 08:45
Sample Matrix: soil

<u>Compounds</u>	<u>Sample Results (mg/kg)</u>	<u>Reporting Limit (mg/kg)</u>	<u>Flags</u>
Arsenic	< 3	3	
Barium	32	3	
Cadmium	< 3	3	
Chromium	4.4	3	
Copper	6.9	3	
Mercury	< 1	1	
Selenium	< 3	3	
Silver	< 3	3	

Percent Solids 72%

Analysis Date/Time: 4/30/2007 12:41	Hg Analysis Date/Time: 4/30/2007 12:58
Analyst Initials: gjd	Hg Analyst Initials: gjd
Date Digested: 4/28/2007	Date Digested: 4/28/2007
Initial Sample Weight: 1.0 g	Initial Sample Weight: 0.6 g
Final Volume: 50 mL	Final Volume: 50 mL
Analytical Batch: 043007icp	Analytical Batch: 043007hgs

All results reported on dry weight basis.



ENVISSION Laboratories, Inc.
 1439 Sadler Circle West Drive
 Indianapolis, IN 46239
 Tel: 317.351.8632
 Fax: 317.351.8639
 www.envisionlaboratories.com

Client Name: QEPI
Project ID: Former Union St. Sunoco
Client Project Manager: Nivas Vijay
ENVISSION Project Number: 2007-699
Analytical Method: 8270 SVOC
Prep Method: 3550B
Analytical Batch: 042407B

Client Sample ID: SB-4 (6-8) **Sample Collection Date/Time:** 4/13/07 11:45
Envision Sample Number: 7-4426 **Sample Received Date/Time:** 4/16/07 08:45
Sample Matrix: soil

Compounds	Sample Results (mg/kg)	Rep. Limit (mg/kg)	Flags
Acenaphthene	< 0.46	0.46	
Acenaphthylene	< 0.46	0.46	
Aniline	< 0.46	0.46	
Anthracene	< 0.46	0.46	
Benzo(a)anthracene	< 0.46	0.46	
Benzo(a)pyrene	< 0.46	0.46	
Benzo(b)fluoranthene	< 0.46	0.46	
Benzo(g,h,i)perylene	< 0.46	0.46	
Benzo(k)fluoranthene	< 0.46	0.46	
Benzoic Acid	< 2.22	2.22	
Benzyl Alcohol	< 0.92	0.92	
4-Bromophenylphenyl ether	< 0.46	0.46	
Butylbenzylphthalate	< 0.46	0.46	
Carbazole	< 0.92	0.92	
4-Chloro-3-methylphenol	< 0.92	0.92	
4-Chloroaniline	< 0.92	0.92	
bis(2-Chloroethoxy)methane	< 0.46	0.46	
bis(2-Chloroethyl)ether	< 0.46	0.46	
bis(2-Chloroisopropyl)ether	< 0.46	0.46	
2-Chloronaphthalene	< 0.46	0.46	
2-Chlorophenol	< 0.46	0.46	
4-Chlorophenylphenyl ether	< 0.46	0.46	
Chrysene	< 0.46	0.46	
Dibenzo(a,h)anthracene	< 0.46	0.46	
Dibenzofuran	< 0.46	0.46	
1,2-Dichlorobenzene	< 0.46	0.46	
1,3-Dichlorobenzene	< 0.46	0.46	
1,4-Dichlorobenzene	< 0.46	0.46	
1,4-Dichlorobenzidine	< 0.92	0.92	
2,4-Dichlorophenol	< 0.46	0.46	
Diethylphthalate	< 0.46	0.46	
2,4-Dimethylphenol	< 0.46	0.46	
Dimethylphthalate	< 0.46	0.46	
Di-n-butylphthalate	< 0.46	0.46	



ENVISSION Laboratories, Inc.
 1439 Sadlier Circle West Drive
 Indianapolis, IN 46239
 Tel: 317.351.8632
 Fax: 317.351.8639
 www.envisionlaboratories.com

8270 continued...

Compounds	Sample Results (mg/kg)	Rep. Limit (mg/kg)	Flags
4,6-Dinitro-2-methylphenol	< 2.22	2.22	
2,4-Dinitrophenol	< 2.22	2.22	
2,4-Dinitrotoluene	< 0.46	0.46	
2,6-Dinitrotoluene	< 0.46	0.46	
Di-n-octylphthalate	< 0.46	0.46	
bis(2-Ethylhexyl)phthalate	< 0.46	0.46	
Fluoranthene	< 0.46	0.46	
Fluorene	< 0.46	0.46	
Hexachloro-1,3-butadiene	< 0.46	0.46	
Hexachlorobenzene	< 0.46	0.46	
Hexachlorocyclopentadiene	< 0.46	0.46	
Hexachloroethane	< 0.46	0.46	
Indeno(1,2,3-cd)pyrene	< 0.46	0.46	
Isophorone	< 0.46	0.46	
2-Methylnaphthalene	< 0.46	0.46	
2-Methylphenol (o-Cresol)	< 0.46	0.46	
3&4-Methylphenol	< 0.92	0.92	
Naphthalene	< 0.46	0.46	
Nitroaniline	< 2.22	2.22	
3-Nitroaniline	< 2.22	2.22	
4-Nitroaniline	< 2.22	2.22	
Nitrobenzene	< 0.46	0.46	
2-Nitrophenol	< 0.46	0.46	
4-Nitrophenol	< 2.22	2.22	
N-Nitroso-di-n-propylamine	< 0.46	0.46	
N-Nitrosodiphenylamine	< 0.46	0.46	
Pentachlorophenol	< 2.22	2.22	
Phenanthrene	< 0.42	0.42	
Phenol	< 0.46	0.46	
Pyrene	< 0.46	0.46	
1,2,4-Trichlorobenzene	< 0.46	0.46	
2,4,5-Trichlorophenol	< 0.46	0.46	
2,4,6-Trichlorophenol	< 0.46	0.46	
2-Fluorophenol (surrogate)	84%		
Phenol-d6 (surrogate)	94%		
Nitrobenzene-d5 (surrogate)	58%		
2-Fluorobiphenyl (surrogate)	95%		
2,4,6-Tribromophenol (surrogate)	97%		
p-Terphenyl-d14 (surrogate)	102%		
Analysis Date/Time:	04-24-07/09:42		
Analyst Initials:	bds		
Date Extracted:	4/20/2007		
Initial Sample Weight:	30.0 g		
Final Volume:	1.0 mL		
Percent Solids	72%		

All results reported on dry weight basis.

Your Projects. Our Passion.



ENVision Laboratories, Inc.
 1439 Sadlier Circle West Drive
 Indianapolis, IN 46239
 Tel: 317.351.8632
 Fax: 317.351.8639
 www.envisionlaboratories.com

Client Name: QEPI
Project ID: Former Union St. Sunoco
Client Project Manager: Nivas Vijay
ENVision Project Number: 2007-699
Analytical Method: 8082 PCB
Prep Method: 3550B
Analytical Batch: 042007PCB
Client Sample ID: SB-4 (6-8) **Sample Collection Date/Time:** 4/13/07 11:45
Envision Sample Number: 7-4426 **Sample Received Date/Time:** 4/16/07 08:45
Sample Matrix: soil

<u>Compounds</u>	<u>Sample Results (ug/kg)</u>	<u>Rep. Limit (ug/kg)</u>	<u>Flags</u>
Aroclor 1016	< 111.1	111.1	
Aroclor 1221	< 111.1	111.1	
Aroclor 1232	< 111.1	111.1	
Aroclor 1242	< 111.1	111.1	
Aroclor 1248	< 111.1	111.1	
Aroclor 1254	< 222	222	
Aroclor 1260	< 222	222	
Tetrachloro-m-xylene (surrogate)	84%		
Decachlorobiphenyl (surrogate)	73%		
Analysis Date/Time:	04/25/07/18:05		
Analyst Initials:	tjg		
Date Extracted:	04/18/07		
Initial Sample Weight:	30.0 g		
Final Volume:	1.0 mL		
Percent Solids	72%		

All results reported on dry weight basis.



ENVision Laboratories, Inc.
 1439 Sadler Circle West Drive
 Indianapolis, IN 46239
 Tel: 317.351.8632
 Fax: 317.351.8639
 www.envisionlaboratories.com

Client Name: QEPI
Project ID: Former Union St. Sunoco
Client Project Manager: Nivas Vijay
ENVision Project Number: 2007-699

Client Sample ID: SB-4 (6-8) **Sample Collection Date/Time:** 4/13/07 11:45
Envision Sample Number: 7-4426 **Sample Received Date/Time:** 4/16/07 08:45
Sample Matrix: soil

<u>Analyte</u>	<u>Sample Results</u>	<u>Flags</u>	<u>Method</u>
Percent Moisture	28.0%		1684
Percent Solids	72.0%		1684
Analysis Date:	4/20/07		
Analyst Initials	kma		



ENVision Laboratories, Inc.
 1439 Sadlier Circle West Drive
 Indianapolis, IN 46239
 Tel: 317.351.8632
 Fax: 317.351.8639
 www.envisionlaboratories.com

Client Name: QEPI
Project ID: Former Union St. Sunoco
Client Project Manager: Nivas Vijay
ENVision Project Number: 2007-699
Analytical Method: 8260 Volatiles
Prep Method: 5035
Analytical Batch: 041807VS

Client Sample ID: SB-5 (4-6) **Sample Collection Date/Time:** 4/13/07 12:50
Envision Sample Number: 7-4427 **Sample Received Date/Time:** 4/16/07 08:45
Sample Matrix: soil

Compounds	Sample Results (ug/kg)	Rep. Limit (ug/kg)	Flags
Acetone	< 185	185	
Acrolein	< 185	185	
Acrylonitrile	< 185	185	
Benzene	< 9	9	
Bromobenzene	< 9	9	
Bromochloromethane	< 9	9	
Bromodichloromethane	< 9	9	
Bromoform	< 9	9	
Bromomethane	< 9	9	
n-Butanol	< 93	93	
2-Butanone (MEK)	< 19	19	
n-Butylbenzene	< 9	9	
sec-Butylbenzene	< 9	9	
tert-Butylbenzene	< 9	9	
Carbon Disulfide	< 9	9	
Carbon Tetrachloride	< 9	9	
Chlorobenzene	< 9	9	
Chloroethane	< 9	9	
2-Chloroethylvinylether	< 93	93	
Chloroform	< 9	9	
Chloromethane	< 9	9	
2-Chlorotoluene	< 9	9	
4-Chlorotoluene	< 9	9	
1,2-Dibromo-3-chloropropane	< 9	9	
Dibromochloromethane	< 9	9	
1,2-Dibromoethane (EDB)	< 9	9	
Dibromomethane	< 9	9	
1,2-Dichlorobenzene	< 9	9	
1,3-Dichlorobenzene	< 9	9	
1,4-Dichlorobenzene	< 9	9	
trans-1,4-Dichloro-2-butene	< 185	185	
Dichlorodifluoromethane	< 9	9	
1,1-Dichloroethane	< 9	9	
1,2-Dichloroethane	< 9	9	
1,1-Dichloroethene	< 9	9	



ENVision Laboratories, Inc.
 1439 Sadler Circle West Drive
 Indianapolis, IN 46239
 Tel: 317.351.8632
 Fax: 317.351.8639
 www.envisionlaboratories.com

8260 continued...

Compounds	Sample Results (ug/kg)	Rep. Limit (ug/kg)	Flags
cis-1,2-Dichloroethene	< 9	9	
trans-1,2-Dichloroethene	< 9	9	
1,2-Dichloropropane	< 9	9	
1,3-Dichloropropane	< 9	9	
2,2-Dichloropropane	< 9	9	
1,1-Dichloropropene	< 9	9	
cis-1,3-Dichloropropene	< 9	9	
trans-1,3-Dichloropropene	< 9	9	
Ethylbenzene	< 9	9	
Ethyl methacrylate	< 185	185	
Hexachloro-1,3-butadiene	< 9	9	
n-Hexane	< 19	19	
2-Hexanone	< 19	19	
Iodomethane	< 19	19	
Isopropylbenzene (Cumene)	< 9	9	
p-Isopropyltoluene	< 9	9	
Methylene chloride	< 37	37	
4-Methyl-2-pentanone (MIBK)	< 19	19	
Methyl-tert-butyl-ether	< 9	9	
Naphthalene	< 9	9	
Propylbenzene	< 9	9	
Styrene	< 9	9	
1,1,1,2-Tetrachloroethane	< 9	9	
1,1,2,2-Tetrachloroethane	< 9	9	
Tetrachloroethene	< 9	9	
Toluene	< 9	9	
1,2,3-Trichlorobenzene	< 9	9	
1,2,4-Trichlorobenzene	< 9	9	
1,1,1-Trichloroethane	< 9	9	
1,1,2-Trichloroethane	< 9	9	
Trichloroethene	< 9	9	
Trichlorofluoromethane	< 9	9	
1,2,3-Trichloropropane	< 9	9	
1,2,4-Trimethylbenzene	< 9	9	
1,3,5-Trimethylbenzene	< 9	9	
Vinyl acetate	< 19	19	
Vinyl chloride	< 4	4	
Xylene, M&P	< 9	9	
Xylene, Ortho	< 9	9	
Xylene, Total	< 19	19	
Dibromofluoromethane (surrogate)	50.4	101%	
1,2-Dichloroethane-d4 (surrogate)	52.9	106%	
Toluene-d8 (surrogate)	45.1	90%	
4-bromofluorobenzene (surrogate)	49.2	98%	

Analysis Date/Time: 04/19/07/03:44

Analyst Initials: tjg

Percent Solids: 54%

All results reported on dry weight basis.

Your Projects. Our Passion.



ENVision Laboratories, Inc.
 1439 Sadlier Circle West Drive
 Indianapolis, IN 46239
 Tel: 317.351.8632
 Fax: 317.351.8639
 www.envisionlaboratories.com

Client Name: QEPI
Project ID: Former Union St. Sunoco
Client Project Manager: Nivas Vijay
ENVision Project Number: 2007-699

Analytical Method: 8015 TPH Extended C8-C36
Prep Method: 3550B
Analytical Batch: 042707E

Client Sample ID: SB-5 (4-6) **Sample Collection Date/Time:** 4/13/07 12:50
Envision Sample Number: 7-4427 **Sample Received Date/Time:** 4/16/07 08:45
Sample Matrix: soil

<u>Compounds</u>	<u>Sample Results (mg/kg)</u>	<u>Reporting Limit (mg/kg)</u>	<u>Flags</u>
TPH--Extended C8-C36	< 37	37	
o-Terphenyl (surrogate)	65%		
Analysis Date/Time:	04-28-07/02:28		
Analyst Initials:	bds		
Date Extracted:	4/20/2007		
Initial Sample Weight:	30.0 g		
Final Volume:	3.0 mL		
Percent Solids	54%		

All results reported on dry weight basis.



ENVision Laboratories, Inc.
 1439 Sadlier Circle West Drive
 Indianapolis, IN 46239
 Tel: 317.351.8632
 Fax: 317.351.8639
 www.envisionlaboratories.com

Client Name: QEPI

Project ID: Former Union St. Sunoco

Client Project Manager: Nivas Vijay

ENVision Project Number: 2007-699

Analytical Method: 8015 TPH Gasoline Range
Prep Method: 5035
Analytical Batch: 041907GS

Client Sample ID: SB-5 (4-6) **Sample Collection Date/Time:** 4/13/07 12:50
Envision Sample Number: 7-4427 **Sample Received Date/Time:** 4/16/07 08:45
Sample Matrix: soil

<u>Compounds</u>	<u>Sample Results (mg/kg)</u>	<u>Reporting Limit (mg/kg)</u>	<u>Flags</u>
TPH-Gasoline	< 1.9	1.9	
4-bromofluorobenzene (surrogate)	111%		
Analysis Date/Time:	04/20/07/03:43		
Analyst Initials	tjg		
Percent Solids	54%		

All results reported on dry weight basis.



ENVision Laboratories, Inc.
 1439 Sadlier Circle West Drive
 Indianapolis, IN 46239
 Tel: 317.351.8632
 Fax: 317.351.8639
 www.envisionlaboratories.com

Client Name: QEPI
Project ID: Former Union St. Sunoco
Client Project Manager: Nivas Vijay
ENVision Project Number: 2007-699

Client Sample ID: SB-5 (4-6) **Sample Collection Date/Time:** 4/13/07 12:50
Envision Sample Number: 7-4427 **Sample Received Date/Time:** 4/16/07 08:45
Sample Matrix: soil

<u>Analyte</u>	<u>Sample Results</u>	<u>Flags</u>	<u>Method</u>
Percent Moisture	46.0%		1684
Percent Solids	54.0%		1684
Analysis Date:	4/20/07		
Analyst Initials	kma		



ENVision Laboratories, Inc.
 1439 Sadlier Circle West Drive
 Indianapolis, IN 46239
 Tel: 317.351.8632
 Fax: 317.351.8639
 www.envisionlaboratories.com

8260 Quality Control Data

ENVision Batch Number: 041807VWB

<u>Method Blank (MB):</u>	<u>MB Results (ug/kg)</u>	<u>Rep Lim (ug/kg)</u>	<u>Flag</u>
Methyl-tert-butyl-ether	< 5	5	
Benzene	< 5	5	
Toluene	< 5	5	
Ethylbenzene	< 5	5	
Xylene, M&P	< 5	5	
Xylene, Ortho	< 5	5	
Xylenes, Total	<10	10	
Dibromofluoromethane (surrogate)	107%		
1,2-Dichloroethane-d4 (surrogate)	100%		
Toluene-d8 (surrogate)	109%		
4-bromofluorobenzene (surrogate)	88%		
Analysis Date/Time:	04/18/07/19:24		
Analyst Initials	tjg		

<u>LCS/LCSD</u>	<u>LCS Results (ug/kg)</u>	<u>LCS/LCSD Conc. (ug/kg)</u>	<u>LCSD Result (ug/kg)</u>	<u>LCS Rec.</u>	<u>LCSD Rec.</u>	<u>RPD</u>	<u>Flag</u>
Methyl-tert-butyl-ether	48.6	50	48.9	97%	98%	0.6%	
Benzene	57	50	59.3	114%	119%	4.0%	
Toluene	54.9	50	56.2	110%	112%	2.3%	
Ethylbenzene	56	50	53	112%	106%	5.5%	
Xylene, M&P	111	100	101	111%	101%	9.4%	
Xylene, Ortho	55.7	50	52	111%	104%	6.9%	
Dibromofluoromethane (surrogate)	81%		100%				
1,2-Dichloroethane-d4 (surrogate)	89%		89%				
Toluene-d8 (surrogate)	106%		88%				
4-bromofluorobenzene (surrogate)	97%		88%				
Analysis Date/Time:	04/18/07/18:41		04/18/07/19:02				
Analyst Initials	tjg		tjg				



ENVision Laboratories, Inc.
 1439 Sadler Circle West Drive
 Indianapolis, IN 46239
 Tel: 317.351.8632
 Fax: 317.351.8639
 www.envisionlaboratories.com

8260 Quality Control Data

ENVision Batch Number: 041807VS

<u>Method Blank (MB):</u>	<u>MB Results (ug/kg)</u>	<u>Rep Lim (ug/kg)</u>	<u>Flag</u>
Acetone	< 100	100	
Acrolein	< 100	100	
Acrylonitrile	< 100	100	
Benzene	< 5	5	
Bromobenzene	< 5	5	
Bromochloromethane	< 5	5	
Bromodichloromethane	< 5	5	
Bromoform	< 5	5	
Bromomethane	< 5	5	
n-Butanol	< 50	50	
2-Butanone (MEK)	< 10	10	
n-Butylbenzene	< 5	5	
sec-Butylbenzene	< 5	5	
tert-Butylbenzene	< 5	5	
Carbon Disulfide	< 5	5	
Carbon Tetrachloride	< 5	5	
Chlorobenzene	< 5	5	
Chloroethane	< 5	5	
2-Chloroethylvinylether	< 50	50	
Chloroform	< 5	5	
Chloromethane	< 5	5	
2-Chlorotoluene	< 5	5	
4-Chlorotoluene	< 5	5	
1,2-Dibromo-3-chloropropane	< 5	5	
Dibromochloromethane	< 5	5	
1,2-Dibromoethane (EDB)	< 5	5	
Dibromomethane	< 5	5	
1,2-Dichlorobenzene	< 5	5	
1,3-Dichlorobenzene	< 5	5	
1,4-Dichlorobenzene	< 5	5	
trans-1,4-Dichloro-2-butene	< 100	100	
Dichlorodifluoromethane	< 5	5	
1,1-Dichloroethane	< 5	5	
1,2-Dichloroethane	< 5	5	
1,1-Dichloroethene	< 5	5	
cis-1,2-Dichloroethene	< 5	5	
trans-1,2-Dichloroethene	< 5	5	
1,2-Dichloropropane	< 5	5	
1,3-Dichloropropane	< 5	5	
2,2-Dichloropropane	< 5	5	
1,1-Dichloropropene	< 5	5	
cis-1,3-Dichloropropene	< 5	5	
trans-1,3-Dichloropropene	< 5	5	
Ethylbenzene	< 5	5	
Ethyl methacrylate	< 100	100	



ENVision Laboratories, Inc.
 1439 Sadlier Circle West Drive
 Indianapolis, IN 46239
 Tel: 317.351.8632
 Fax: 317.351.8639
 www.envisionlaboratories.com

8260 QC Continued...

	<u>MB Results (ug/kg)</u>	<u>Rep Lim (ug/kg)</u>	<u>Flag</u>
Hexachloro-1,3-butadiene	< 5	5	
2-Hexanone	< 10	10	
n-Hexane	< 10	10	
Iodomethane	< 10	10	
Isopropylbenzene (Cumene)	< 5	5	
p-Isopropyltoluene	< 5	5	
Methylene chloride	< 5	5	
4-Methyl-2-pentanone (MIBK)	< 10	10	
Methyl-tert-butyl-ether	< 5	5	
Naphthalene	< 5	5	
n-Propylbenzene	< 5	5	
Styrene	< 5	5	
1,1,1,2-Tetrachloroethane	< 5	5	
1,1,2,2-Tetrachloroethane	< 5	5	
Tetrachloroethene	< 5	5	
Toluene	< 5	5	
1,2,3-Trichlorobenzene	< 5	5	
1,2,4-Trichlorobenzene	< 5	5	
1,1,1-Trichloroethane	< 5	5	
1,1,2-Trichloroethane	< 5	5	
Trichloroethene	< 5	5	
Trichlorofluoromethane	< 5	5	
1,2,3-Trichloropropane	< 5	5	
1,2,4-Trimethylbenzene	< 5	5	
1,3,5-Trimethylbenzene	< 5	5	
Vinyl acetate	< 10	10	
Vinyl chloride	< 2	2	
Xylene, M&P	< 5	5	
Xylene, Ortho	< 5	5	
Xylenes, Total	<10	10	
Dibromofluoromethane (surrogate)	107%		
1,2-Dichloroethane-d4 (surrogate)	100%		
Toluene-d8 (surrogate)	109%		
4-bromofluorobenzene (surrogate)	88%		
Analysis Date/Time:	04/18/07/19:24		
Analyst Initials	tjg		



ENVision Laboratories, Inc.
 1439 Sadlier Circle West Drive
 Indianapolis, IN 46239
 Tel: 317.351.8632
 Fax: 317.351.8639
 www.envisionlaboratories.com

8260 QC Continued...

<u>LCS/LCSD</u>	<u>LCS Results (ug/kg)</u>	<u>LCS/LCSD Conc. (ug/kg)</u>	<u>LCSD Result (ug/kg)</u>	<u>LCS Rec.</u>	<u>LCSD Rec.</u>	<u>RPD</u>	<u>Flag</u>
1,1-Dichloroethene	56.7	50	59.3	113%	119%	0.04	
Benzene	57	50	59.3	114%	119%	0.04	
Trichloroethene	55.9	50	58.4	112%	117%	0.04	
Toluene	54.9	50	56.2	110%	112%	0.02	
Chlorobenzene	56.3	50	54.4	113%	109%	0.03	
Dibromofluoromethane (surrogate)	81%		100%				
1,2-Dichloroethane-d4 (surrogate)	89%		89%				
Toluene-d8 (surrogate)	106%		88%				
4-bromofluorobenzene (surrogate)	97%		88%				
Analysis Date/Time:	04/18/07/18:41		04/18/07/19:02				
Analyst Initials	tjg		tjg				



ENVISSION Laboratories, Inc.
 1439 Sadlier Circle West Drive
 Indianapolis, IN 46239
 Tel: 317.351.8632
 Fax: 317.351.8639
 www.envisionlaboratories.com

8015 TPH-Extended Range Quality Control Data

ENVISSION Batch Number: 042007DS

	MB Results	Reporting Limit	Flag
Method Blank (MB):	(mg/kg)	(mg/kg)	
TPH-Extended Range	< 20	20	
o-Terphenyl (surrogate)	75%		
Analysis Date/Time:	04-21-07/00:20		
Analyst Initials:	bds		
Date Extracted:	4/20/2007		
Initial Sample Weight:	30.0 g		
Final Volume:	3.0 mL		

	LCS Result	LCS/LCSD Conc.	LCSD Result	LCS	LCSD	RPD	Flag
LCS/LCSD	(mg/kg)	(mg/kg)	(mg/kg)	Rec.	Rec.		
TPH-Extended Range	211.17	200	203.1	105.6%	101.6%	3.9%	
o-Terphenyl (surrogate)	112%		111%				
Analysis Date/Time:	04-21-07/00:50		04-21-07/01:19				
Analyst Initials:	bds		bds				
Date Extracted:	4/20/2007		4/20/2007				
Initial Sample Weight:	30.0 g		30.0 g				
Final Volume:	3.0 mL		3.0 mL				



ENVISSION Laboratories, Inc.
 1439 Sadlier Circle West Drive
 Indianapolis, IN 46239
 Tel: 317.351.8632
 Fax: 317.351.8639
 www.envisionlaboratories.com

8015 TPH-Gasoline Quality Control Data

ENVISSION Batch Number: 041907GS

<u>Method Blank (MB):</u>	<u>MB Results (mg/kg)</u>	<u>Rep Lim (mg/kg)</u>	<u>Flag</u>
TPH-Gasoline	< 1	1	
4-bromofluorobenzene (surrogate)	113%		
Analysis Date/Time:	04/19/07/09:29		
Analyst Initials:	tjg		

<u>Laboratory Control Standard (LCS):</u>	<u>LCS Results (mg/kg)</u>	<u>LCS Conc (mg/kg)</u>	<u>% Rec</u>	<u>Flag</u>
TPH-Gasoline	8.14	8	101.75	
4-bromofluorobenzene (surrogate)	100%			
Analysis Date/Time:	04/19/07/09:48			
Analyst Initials:	tjg			

<u>Matrix Spike/Matrix Spike Dup (MS/MSD)</u>	<u>Sample Results (mg/kg)</u>	<u>MS Res.</u>	<u>MSD Res.</u>	<u>Spike Conc.</u>	<u>MS Rec</u>	<u>MSD Rec</u>	<u>% D</u>	<u>Flag</u>
TPH-Gasoline	0	6.77	6.91	8 mg/L	84.63	86.4	2.05	
4-bromofluorobenzene (surrogate)	85%	97%	88%					
Analysis Date/Time:	04/19/07/18:08	04/19/07/18:28	04/19/07/18:47					
Analyst Initials:	tjg	tjg	tjg					
Original Sample Number Spiked:	7-4215							



ENVision Laboratories, Inc.
 1439 Sadlier Circle West Drive
 Indianapolis, IN 46239
 Tel: 317.351.8632
 Fax: 317.351.8639
 www.envisionlaboratories.com

6010B/7471A Metals Quality Control Data

ENVision Batch Number: 043007hgs / 043007icp

<u>Method Blank (MB):</u>	<u>MB Results (mg/kg)</u>	<u>Rep Lim (mg/kg)</u>	<u>Flag</u>
Arsenic	< 2	2	
Barium	< 2	2	
Cadmium	< 2	2	
Chromium	< 2	2	
Lead	< 2	2	
Mercury	< 1	1	
Selenium	< 2	2	
Silver	< 2	2	
Analysis Date/Time:	4/30/07 11:32icp / 4/30/07 12:21hg		
Analyst Initials:	gjd		

<u>Laboratory Control Standard:</u>	<u>LCS Results(ppm)</u>	<u>LCS Conc(ppm)</u>	<u>% Rec</u>	<u>Flag</u>
Arsenic	0.45	0.50	90%	
Barium	0.45	0.50	90%	
Cadmium	0.47	0.50	94%	
Chromium	0.45	0.50	90%	
Lead	0.48	0.50	96%	
Mercury	0.0055	0.005	110%	
Selenium	0.49	0.50	98%	
Silver	0.45	0.50	90%	
Analysis Date/Time:	4/30/07 11:36icp / 4/30/07hg			
Analyst Initials:	gjd			

<u>Matrix Spike/Matrix Spike Dup:</u>	<u>Smpl Results(ppm)</u>	<u>MS Res(ppm)</u>	<u>MSD Res(ppm)</u>	<u>Spk Conc(ppm)</u>	<u>MS Rec</u>	<u>MSD Rec</u>	<u>% D</u>	<u>Flag</u>
Arsenic	0	0.46	0.48	0.50	92%	96%	4.255	
Barium	1.92	2.47	2.46	0.50	110%	108%	1.835	
Cadmium	0	0.5	0.52	0.50	100%	104%	3.922	
Chromium	0.23	0.81	0.83	0.50	116%	120%	3.39	
Lead	0.23	0.76	0.75	0.50	106%	104%	1.905	
Mercury	0	0.0045	0.0045	0.005	90%	90%	0	
Selenium	0	0.45	0.47	0.50	90%	94%	4.348	
Silver	0	0.44	0.48	0.50	88%	96%	8.696	
Original Sample Number Spiked:	7-4349icp / 7-4471hg							
Analysis Date/Time:	4/30/07 10:30icp / 4/30/07 13:02hg							
Analyst Initials:	gjd							



ENVision Laboratories, Inc.
 1439 Sadlier Circle West Drive
 Indianapolis, IN 46239
 Tel: 317.351.8632
 Fax: 317.351.8639
 www.envisionlaboratories.com

8082 PCB Quality Control Data

ENVision Batch Number: 042007PCB

Method Blank (MB):	Method Blank Results (ug/kg)	Reporting Limit (ug/kg)	Flag
Aroclor 1016	< 80.0	80.0	
Aroclor 1221	< 80.0	80.0	
Aroclor 1232	< 80.0	80.0	
Aroclor 1242	< 80.0	80.0	
Aroclor 1248	< 80.0	80.0	
Aroclor 1254	< 160	160	
Aroclor 1260	< 160	160	
Tetrachloro-m-xylene (surrogate)	114%		
Decachlorobiphenyl (surrogate)	82%		
Analysis Date/Time	04/20/07/10:54		
Analyst Initials	tjg		
Date Extracted	04/17/07		
Initial Sample Weight:	30.0 g		
Final Volume	1.0 mL		

LCS/LCSD	LCS Results	LCS Concentration	LCSD Results	LCS Recovery	LCSD Recovery	RPD	Flag
Aroclor 1016	4.77	5.00	4.52	95.4%	90.4%	5.4%	
Aroclor 1260	5.23	5.00	4.99	104.6%	99.8%	4.7%	
Tetrachloro-m-xylene (surrogate)	102%		82%				
Decachlorobiphenyl (surrogate)	71%		91%				
Analysis Date/Time	04/20/07/11:23		04/20/07/11:53				
Analyst Initials	tjg		tjg				
Date Extracted	04/17/07		04/17/07				
Initial Sample Weight:	30.0 g		30.0 g				
Final Volume	1.0 mL		1.0 mL				



ENVision Laboratories, Inc.
1439 Sadlier Circle West Drive
Indianapolis, IN 46239
Tel: 317.351.8632
Fax: 317.351.8639
www.envisionlaboratories.com

Flag Number

Comments



ENVision Laboratories, Inc.
1439 Sadlier Circle West Drive
Indianapolis, IN 46239
Tel: 317.351.8632
Fax: 317.351.8639
www.envisionlaboratories.com

Mr. Nivas Vijay
QEPI
1611 South Franklin Road
Indianapolis, IN 46239

May 2, 2007

ENVision Project Number: 2007-698
Client Project Name: 07-01-05/Former Union St. Sunoco

Dear Mr. Vijay,

Please find the attached analytical report for the samples received April 16, 2007. All test methods performed were fully compliant with local, state, and federal EPA methods unless otherwise noted. The project was analyzed as requested on the enclosed chain of custody record. Please review the comments section for additional information about your results or Quality Control data. Metals analyses are not included in the NELAC certification.

Feel free to contact me if you have any questions or comments regarding your analytical report or service.

Thank you for your business. ENVision Laboratories looks forward to working with you on your next project.

Yours Sincerely,

A handwritten signature in cursive script that reads "David Norris".

David Norris

Client Services Manager
ENVision Laboratories, Inc.

IL ELAP / NELAC Accreditation # 100454





ENVision Laboratories, Inc.
 1439 Sadlier Circle West Drive
 Indianapolis, IN 46239
 Tel: 317.351.8632
 Fax: 317.351.8639
 www.envisionlaboratories.com

Client Name: QEPI

Project ID: Former Union St. Sunoco

Client Project Manager: Nivas Vijay

ENVision Project Number: 2007-698

Analytical Method: 8260/BTEX/MTBE
Prep Method: 5030B
Analytical Batch: 042607VWB

Client Sample ID: SB-1 **Sample Collection Date/Time:** 4/13/07 9:30
Envision Sample Number: 7-4418 **Sample Received Date/Time:** 4/16/07 8:45
Sample Matrix: water

<u>Compounds</u>	<u>Sample Results (ug/L)</u>	<u>Reporting Limit (ug/L)</u>	<u>Flags</u>
Benzene	6.84	5	
Toluene	< 5	5	
Ethylbenzene	53.2	5	
Xylene, M&P	192	5	
Xylene, Ortho	< 5	5	
Xylenes, Total	192	10	
Methyl-tert-butyl-ether	< 5	5	
Dibromofluoromethane (surrogate)	49.8	100%	
1,2-Dichloroethane-d4 (surrogate)	57.1	114%	
Toluene-d8 (surrogate)	51.8	104%	
4-bromofluorobenzene (surrogate)	45	90%	
Analysis Date/Time:	04/26/07/21:05		
Analyst Initials	tjg		



ENVision Laboratories, Inc.
 1439 Sadlier Circle West Drive
 Indianapolis, IN 46239
 Tel: 317.351.8632
 Fax: 317.351.8639
 www.envisionlaboratories.com

Client Name: QEPI

Project ID: Former Union St. Sunoco

Client Project Manager: Nivas Vijay

ENVision Project Number: 2007-698

Analytical Method: 8015 GRO
Prep Method: 5030
Analytical Batch: 042407GW

Client Sample ID: SB-1 **Sample Collection Date/Time:** 4/13/07 9:30
Envision Sample Number: 7-4418 **Sample Received Date/Time:** 4/16/07 8:45
Sample Matrix: water

<u>Compounds</u>	<u>Sample Results (ug/L)</u>	<u>Reporting Limit (ug/L)</u>	<u>Flags</u>
TPH-Gasoline	1510	100	
4-bromofluorobenzene (surrogate)	86%		
Analysis Date/Time:	04/24/07/21:03		
Analyst Initials	tjg		



ENVision Laboratories, Inc.
 1439 Sadlier Circle West Drive
 Indianapolis, IN 46239
 Tel: 317.351.8632
 Fax: 317.351.8639
 www.envisionlaboratories.com

Client Name: QEPI
Project ID: Former Union St. Sunoco
Client Project Manager: Nivas Vijay
ENVision Project Number: 2007-698
Analytical Method: 8260/BTEX/MTBE
Prep Method: 5030B
Analytical Batch: 042607VWB
Client Sample ID: SB-2
Envision Sample Number: 7-4419
Sample Matrix: water
Sample Collection Date/Time: 4/13/07 9:25
Sample Received Date/Time: 4/16/07 8:45

<u>Compounds</u>	<u>Sample Results (ug/L)</u>	<u>Reporting Limit (ug/L)</u>	<u>Flags</u>
Benzene	47.1	50	2,3
Toluene	< 50	50	2
Ethylbenzene	1130	50	2
Xylene, M&P	2480	50	2
Xylene, Ortho	< 5	50	2
Xylenes, Total	2480	100	
Methyl-tert-butyl-ether	< 40	50	2,3
Dibromofluoromethane (surrogate)	50.7	101%	
1,2-Dichloroethane-d4 (surrogate)	57.2	114%	
Toluene-d8 (surrogate)	52.3	105%	
4-bromofluorobenzene (surrogate)	45.4	91%	
Analysis Date/Time:	04/26/07/21:26		
Analyst Initials	tjg		



ENVision Laboratories, Inc.
 1439 Sadlier Circle West Drive
 Indianapolis, IN 46239
 Tel: 317.351.8632
 Fax: 317.351.8639
 www.envisionlaboratories.com

Client Name: QEPI

Project ID: Former Union St. Sunoco

Client Project Manager: Nivas Vijay

ENVision Project Number: 2007-698

Analytical Method: 8015 GRO
Prep Method: 5030
Analytical Batch: 042407GW

Client Sample ID: SB-2 **Sample Collection Date/Time:** 4/13/07 9:25
Envision Sample Number: 7-4419 **Sample Received Date/Time:** 4/16/07 8:45
Sample Matrix: water

<u>Compounds</u>	<u>Sample Results (ug/L)</u>	<u>Reporting Limit (ug/L)</u>	<u>Flags</u>
TPH-Gasoline	13400	100	
4-bromofluorobenzene (surrogate)	116%		
Analysis Date/Time:	04/24/07/19:45		
Analyst Initials	tjg		



ENVISSION Laboratories, Inc.
 1439 Sadlier Circle West Drive
 Indianapolis, IN 46239
 Tel: 317.351.8632
 Fax: 317.351.8639
 www.envisionlaboratories.com

Client Name: QEPI

Project ID: Former Union St. Sunoco

Client Project Manager: Nivas Vijay

ENVISSION Project Number: 2007-698

Analytical Method: 8260 Volatiles
Prep Method: 5030B
Analytical Batch: 042607VW

Client Sample ID: SB-3 **Sample Collection Date/Time:** 4/13/07 10:45
Envision Sample Number: 7-4420 **Sample Received Date/Time:** 4/16/07 8:45
Sample Matrix: water

<u>Compounds</u>	<u>Sample Results (ug/L)</u>	<u>Reporting Limit (ug/L)</u>	<u>Flags</u>
Acetone	< 100	100	
Acrolein	< 100	100	
Acrylonitrile	< 100	100	
Benzene	< 5	5	
Bromobenzene	< 5	5	
Bromochloromethane	< 5	5	
Bromodichloromethane	< 5	5	
Bromoform	< 5	5	
Bromomethane	< 5	5	
n-Butanol	< 50	50	
2-Butanone (MEK)	< 10	10	
n-Butylbenzene	< 5	5	
sec-Butylbenzene	8.51	5	
tert-Butylbenzene	< 5	5	
Carbon Disulfide	< 5	5	
Carbon Tetrachloride	< 5	5	
Chlorobenzene	< 5	5	
Chloroethane	< 5	5	
2-Chloroethylvinylether	< 50	50	
Chloroform	< 5	5	
Chloromethane	< 5	5	
2-Chlorotoluene	< 5	5	
4-Chlorotoluene	< 5	5	
1,2-Dibromo-3-chloropropane	< 5	5	
Dibromochloromethane	< 5	5	
1,2-Dibromoethane (EDB)	< 5	5	
Dibromomethane	< 5	5	
1,2-Dichlorobenzene	< 5	5	
1,3-Dichlorobenzene	< 5	5	
1,4-Dichlorobenzene	< 5	5	
trans-1,4-Dichloro-2-butene	< 100	100	
Dichlorodifluoromethane	< 5	5	



ENVision Laboratories, Inc.
 1439 Sadlier Circle West Drive
 Indianapolis, IN 46239
 Tel: 317.351.8632
 Fax: 317.351.8639
 www.envisionlaboratories.com

8260 continued...

<u>Compounds</u>	<u>Sample Results (ug/L)</u>	<u>Reporting Limit (ug/L)</u>	<u>Flags</u>
1,1-Dichloroethane	< 5	5	
1,2-Dichloroethane	< 5	5	
1,1-Dichloroethene	< 5	5	
cis-1,2-Dichloroethene	< 5	5	
trans-1,2-Dichloroethene	< 5	5	
1,2-Dichloropropane	< 5	5	
1,3-Dichloropropane	< 5	5	
2,2-Dichloropropane	< 5	5	
1,1-Dichloropropene	< 5	5	
cis-1,3-Dichloropropene	< 5	5	
trans-1,3-Dichloropropene	< 5	5	
Ethylbenzene	40.2	5	
Ethyl methacrylate	< 100	100	
Hexachloro-1,3-butadiene	< 5	5	
n-Hexane	< 10	10	
2-Hexanone	< 10	10	
Iodomethane	< 10	10	
Isopropylbenzene (Cumene)	25.9	5	
p-Isopropyltoluene	< 5	5	
Methylene chloride	< 5	5	
4-Methyl-2-pentanone (MIBK)	< 10	10	
Methyl-tert-butyl-ether	< 5	5	
Naphthalene	53.8	5	
n-Propylbenzene	54.0	5	
Styrene	< 5	5	
1,1,1,2-Tetrachloroethane	< 5	5	
1,1,2,2-Tetrachloroethane	< 5	5	
Tetrachloroethene	< 5	5	
Toluene	< 5	5	
1,2,3-Trichlorobenzene	< 5	5	
1,2,4-Trichlorobenzene	< 5	5	
1,1,1-Trichloroethane	< 5	5	
1,1,2-Trichloroethane	< 5	5	
Trichloroethene	< 5	5	
Trichlorofluoromethane	< 5	5	
1,2,3-Trichloropropane	< 5	5	
1,2,4-Trimethylbenzene	171	5	
1,3,5-Trimethylbenzene	134	5	
Vinyl acetate	< 10	10	
Vinyl chloride	< 2	2	
Xylene, M&P	121	5	
Xylene, Ortho	< 5	5	
Xylene (Total)	121	10	
Dibromofluoromethane (surrogate)	50.4	101%	
1,2-Dichloroethane-d4 (surrogate)	49.9	100%	
Toluene-d8 (surrogate)	53.2	106%	
4-bromofluorobenzene (surrogate)	42.6	85%	

Analysis Date/Time:
 Analyst Initials

4/26/07/21:48

Your Projects. Our Passion.

Page 7 of 40



ENVISSION Laboratories, Inc.
 1439 Sadler Circle West Drive
 Indianapolis, IN 46239
 Tel: 317.351.8632
 Fax: 317.351.8639
 www.envisionlaboratories.com

Client Name: QEPI
Project ID: Former Union St. Sunoco
Client Project Manager: Nivas Vijay
ENVISSION Project Number: 2007-698
Analytical Method: 8015M TPH-Ext C8-C36
Prep Method: 3520C
Analytical Batch: 042007E

Client Sample ID: SB-3
Envision Sample Number: 7-4420
Sample Matrix: water
Sample Collection Date/Time: 4/13/07 10:45
Sample Received Date/Time: 4/16/07 8:45

<u>Compounds</u>	<u>Sample Results (ug/L)</u>	<u>Reporting Limit (ug/L)</u>	<u>Flags</u>
TPH--Extended C8-C36	2410	100	
o-Terphenyl (surrogate)	65%		
Analysis Date/Time:	04-20-07/10:38		
Analyst Initials:	bds		
Date Extracted:	4/17/2007		
Initial Sample Volume:	980 mL		
Final Volume:	1.0 mL		



ENVision Laboratories, Inc.
 1439 Sadlier Circle West Drive
 Indianapolis, IN 46239
 Tel: 317.351.8632
 Fax: 317.351.8639
 www.envisionlaboratories.com

Client Name: QEPI

Project ID: Former Union St. Sunoco

Client Project Manager: Nivas Vijay

ENVision Project Number: 2007-698

Analytical Method: 8015 GRO
Prep Method: 5030
Analytical Batch: 042407GW

Client Sample ID: SB-3 **Sample Collection Date/Time:** 4/13/07 10:45
Envision Sample Number: 7-4420 **Sample Received Date/Time:** 4/16/07 8:45
Sample Matrix: water

<u>Compounds</u>	<u>Sample Results (ug/L)</u>	<u>Reporting Limit (ug/L)</u>	<u>Flags</u>
TPH-Gasoline	1830	100	
4-bromofluorobenzene (surrogate)	116%		
Analysis Date/Time:	04/24/07/21:45		
Analyst Initials	tjg		



ENVision Laboratories, Inc.
 1439 Sadlier Circle West Drive
 Indianapolis, IN 46239
 Tel: 317.351.8632
 Fax: 317.351.8639
 www.envisionlaboratories.com

Client Name: QEPI
Project ID: Former Union St. Sunoco
Client Project Manager: Nivas Vijay
ENVision Project Number: 2007-698

Analytical Method: 6010/7470
Prep Method: 3010A

Client Sample ID: SB-3 **Sample Collection Date/Time:** 4/13/07 10:45
Envision Sample Number: 7-4420 **Sample Received Date/Time:** 4/16/07 8:45
Sample Matrix: water

<u>Compounds</u>	<u>Sample Results (mg/L)</u>	<u>Reporting Limit (mg/L)</u>	<u>Flags</u>
Arsenic	< 0.01	0.01	
Barium	< 0.1	0.1	
Cadmium	< 0.005	0.005	
Chromium	< 0.01	0.01	
Lead	< 0.01	0.01	
Mercury	< 0.002	0.002	
Selenium	< 0.01	0.01	
Silver	< 0.05	0.05	

ICP Analysis Date/Time:	4/30/2007 17:55	Hg Analysis Date/Time:	4/29/2007 10:30
Analyst Initials:	gjd	Hg Analyst Initials:	gjd
Date Digested:	4/28/2007	Date Digested:	4/28/2007
Initial Sample Volume:	50 mL	Initial Sample Volume:	50 mL
Final Volume:	50 mL	Final Volume:	50 mL
Analytical Batch:	043007icp	Analytical Batch:	042907hgw



ENvision Laboratories, Inc.
 1439 Sadler Circle West Drive
 Indianapolis, IN 46239
 Tel: 317.351.8632
 Fax: 317.351.8639
 www.envisionlaboratories.com

Client Name: QEPI
Project ID: Former Union St. Sunoco
Client Project Manager: Nivas Vijay
ENvision Project Number: 2007-698
Analytical Method: 8270 BNA/PAH-SIM
Prep Method: 3520C
BNA Analytical Batch: 042307B
Client Sample ID: SB-3
Envision Sample Number: 7-4420
Sample Matrix: water

Sample Collection Date/Time: 4/13/07 10:45
Sample Received Date/Time: 4/16/07 8:45

<u>BNA Compounds</u>	<u>Sample Results (ug/L)</u>	<u>Reporting Limit (ug/L)</u>	<u>Flags</u>
Aniline	< 10	10	
Benzoic Acid	< 50	50	
Benzyl Alcohol	< 20	20	
4-Bromophenylphenyl ether	< 10	10	
Diethylbenzylphthalate	< 10	10	
Carbazole	< 20	20	
4-Chloro-3-methylphenol	< 20	20	
4-Chloroaniline	< 20	20	
bis(2-Chloroethoxy)methane	< 10	10	
bis(2-Chloroethyl)ether	< 10	10	
bis(2-Chloroisopropyl)ether	< 10	10	
2-Chloronaphthalene	< 10	10	
2-Chlorophenol	< 10	10	
4-Chlorophenylphenyl ether	< 10	10	
Dibenzofuran	< 10	10	
1,2-Dichlorobenzene	< 10	10	
1,3-Dichlorobenzene	< 10	10	
1,4-Dichlorobenzene	< 10	10	
3,3-Dichlorobenzidine	< 20	20	
2,4-Dichlorophenol	< 10	10	
Diethylphthalate	< 10	10	
2,4-Dimethylphenol	< 10	10	
Dimethylphthalate	< 10	10	
Di-n-butylphthalate	< 10	10	
4,6-Dinitro-2-methylphenol	< 50	50	
2,4-Dinitrophenol	< 50	50	
2,4-Dinitrotoluene	< 10	10	
2,6-Dinitrotoluene	< 10	10	
Di-n-octylphthalate	< 10	10	
Diethylhexylphthalate	< 5	5	
Hexachloro-1,3-butadiene	< 10	10	
Hexachlorobenzene	< 5	5	
Hexachlorocyclopentadiene	< 25	25	
Hexachloroethane	< 10	10	



ENVISSION Laboratories, Inc.
 1439 Sadlier Circle West Drive
 Indianapolis, IN 46239
 Tel: 317.351.8632
 Fax: 317.351.8639
 www.envisionlaboratories.com

8270 Continued...

<u>Compounds</u>	<u>Sample Results (ug/L)</u>	<u>Reporting Limit (ug/L)</u>	<u>Flags</u>
Isophorone	< 10	10	
2-Methylphenol (o-Cresol)	< 10	10	
3&4-Methylphenol	< 20	20	
2-Nitroaniline	< 50	50	
3-Nitroaniline	< 50	50	
4-Nitroaniline	<50	50	
Nitrobenzene	< 10	10	
2-Nitrophenol	< 10	10	
4-Nitrophenol	<50	50	
N-Nitroso-di-n-propylamine	< 10	10	
N-Nitrosodiphenylamine	< 10	10	
Pentachlorophenol	<50	50	
Phenol	< 10	10	
1,2,4-Trichlorobenzene	< 10	10	
2,4,5-Trichlorophenol	< 10	10	
2,4,6-Trichlorophenol	< 10	10	
2-Fluorophenol (surrogate)	117%		1
Phenol-d6 (surrogate)	109%		
Nitrobenzene-d5 (surrogate)	86%		
2-Fluorobiphenyl (surrogate)	88%		
2,4,6-Tribromophenol (surrogate)	108%		
Biphenyl-d14 (surrogate)	78%		
Analysis Date/Time:	04-23-07/23:42		
Analyst Initials:	bds		
Date Extracted:	4/19/2007		
Initial Sample Volume:	990 mL		
Final Volume:	1.0 mL		

PAH-SIM Analytical Batch: 042607P

<u>PAH-SIM Compounds</u>	<u>Sample Results (ug/L)</u>	<u>Reporting Limit (ug/L)</u>	<u>Flags</u>
Acenaphthene	< 10	10	2
Acenaphthylene	< 10	10	2
Anthracene	< 1.0	1.0	2
Benzo(a)anthracene	< 1.0	1.0	2
Benzo(a)pyrene	< 1.0	1.0	2
Benzo(b)fluoranthene	< 1.0	1.0	2
Benzo(g,h,i)perylene	< 1.0	1.0	2
Benzo(k)fluoranthene	< 1.0	1.0	2
Chrysene	< 1.0	1.0	2
Dibenzo(a,h)anthracene	< 1.0	1.0	2
Fluoranthene	< 10	10	2
Fluorene	< 10	10	2
Indeno(1,2,3-cd)pyrene	< 0.22	0.22	2
1-Methylnaphthalene	28	10	2
2-Methylnaphthalene	41	10	2
Phenanthrene	< 10	10	2
Pyrene	< 10	10	2
Analysis Date/Time:	04-27-07/02:27		
Analyst Initials:	bds		



ENVISSION Laboratories, Inc.
 1439 Sadlier Circle West Drive
 Indianapolis, IN 46239
 Tel: 317.351.8632
 Fax: 317.351.8639
 www.envisionlaboratories.com

Client Name: QEPI
Project ID: Former Union St. Sunoco
Client Project Manager: Nivas Vijay
ENVISSION Project Number: 2007-698
Analytical Method: 8082
Prep Method: 3520C
Analytical Batch: 041807PCB
Client Sample ID: SB-3
ENVISSION Sample Number: 7-4420
Sample Matrix: water
Sample Collection Date/Time: 4/13/07 10:45
Sample Received Date/Time: 4/16/07 8:45

<u>Compounds</u>	<u>Sample Results (ug/L)</u>	<u>Reporting Limit (ug/L)</u>	<u>Flags</u>
Aroclor 1016	< 0.50	0.5	
Aroclor 1221	< 0.50	0.5	
Aroclor 1232	< 0.50	0.5	
Aroclor 1242	< 0.50	0.5	
Aroclor 1248	< 0.50	0.5	
Aroclor 1254	< 0.50	0.5	
Aroclor 1260	< 0.50	0.5	
Tetrachloro-m-xylene (surrogate)	90%		
Decachlorobiphenyl (surrogate)	73%		
Analysis Date/Time:	04/25/07/16:35		
Analyst Initials:	tjg		
Date Extracted:	04/18/07		
Initial Sample Volume:	970mL		
Final Volume:	1.0 mL		



ENVision Laboratories, Inc.
 1439 Sadlier Circle West Drive
 Indianapolis, IN 46239
 Tel: 317.351.8632
 Fax: 317.351.8639
 www.envisionlaboratories.com

Client Name: QEPI
Project ID: Former Union St. Sunoco
Client Project Manager: Nivas Vijay
ENVision Project Number: 2007-698
Analytical Method: 8260 Volatiles
Prep Method: 5030B
Analytical Batch: 041907VW
Client Sample ID: SB-4
Envision Sample Number: 7-4421
Sample Matrix: water
Sample Collection Date/Time: 4/13/07 12:10
Sample Received Date/Time: 4/16/07 8:45

<u>Compounds</u>	<u>Sample Results (ug/L)</u>	<u>Reporting Limit (ug/L)</u>	<u>Flags</u>
Acetone	< 100	100	
Acrolein	< 100	100	
Acrylonitrile	< 100	100	
Benzene	< 5	5	
Bromobenzene	< 5	5	
Bromochloromethane	< 5	5	
Bromodichloromethane	< 5	5	
Bromoform	< 5	5	
Bromomethane	< 5	5	
n-Butanol	< 50	50	
2-Butanone (MEK)	< 10	10	
n-Butylbenzene	< 5	5	
sec-Butylbenzene	< 5	5	
tert-Butylbenzene	< 5	5	
Carbon Disulfide	< 5	5	
Carbon Tetrachloride	< 5	5	
Chlorobenzene	< 5	5	
Chloroethane	< 5	5	
2-Chloroethylvinylether	< 50	50	
Chloroform	< 5	5	
Chloromethane	< 5	5	
2-Chlorotoluene	< 5	5	
4-Chlorotoluene	< 5	5	
1,2-Dibromo-3-chloropropane	< 5	5	
Dibromochloromethane	< 5	5	
1,2-Dibromoethane (EDB)	< 5	5	
Dibromomethane	< 5	5	
1,2-Dichlorobenzene	< 5	5	
1,3-Dichlorobenzene	< 5	5	
1,4-Dichlorobenzene	< 5	5	
trans-1,4-Dichloro-2-butene	< 100	100	
Dichlorodifluoromethane	< 5	5	



ENVision Laboratories, Inc.
 1439 Sadler Circle West Drive
 Indianapolis, IN 46239
 Tel: 317.351.8632
 Fax: 317.351.8639
 www.envisionlaboratories.com

8260 continued...

<u>Compounds</u>	<u>Sample Results (ug/L)</u>	<u>Reporting Limit (ug/L)</u>	<u>Flags</u>
1,1-Dichloroethane	< 5	5	
1,2-Dichloroethane	< 5	5	
1,1-Dichloroethene	< 5	5	
cis-1,2-Dichloroethene	< 5	5	
trans-1,2-Dichloroethene	< 5	5	
1,2-Dichloropropane	< 5	5	
1,3-Dichloropropane	< 5	5	
2,2-Dichloropropane	< 5	5	
1,1-Dichloropropene	< 5	5	
cis-1,3-Dichloropropene	< 5	5	
trans-1,3-Dichloropropene	< 5	5	
Ethylbenzene	< 5	5	
Ethyl methacrylate	< 100	100	
Hexachloro-1,3-butadiene	< 5	5	
n-Hexane	< 10	10	
2-Hexanone	< 10	10	
Iodomethane	< 10	10	
Isopropylbenzene (Cumene)	< 5	5	
p-Isopropyltoluene	< 5	5	
Methylene chloride	< 5	5	
4-Methyl-2-pentanone (MIBK)	< 10	10	
Methyl-tert-butyl-ether	< 5	5	
Naphthalene	< 5	5	
n-Propylbenzene	< 5	5	
Styrene	< 5	5	
1,1,1,2-Tetrachloroethane	< 5	5	
1,1,2,2-Tetrachloroethane	< 5	5	
Tetrachloroethene	< 5	5	
Toluene	< 5	5	
1,2,3-Trichlorobenzene	< 5	5	
1,2,4-Trichlorobenzene	< 5	5	
1,1,1-Trichloroethane	< 5	5	
1,1,2-Trichloroethane	< 5	5	
Trichloroethene	< 5	5	
Trichlorofluoromethane	< 5	5	
1,2,3-Trichloropropane	< 5	5	
1,2,4-Trimethylbenzene	8.32	5	
1,3,5-Trimethylbenzene	< 5	5	
Vinyl acetate	< 10	10	
Vinyl chloride	< 2	2	
Xylene, M&P	5.21	5	
Xylene, Ortho	< 5	5	
Xylene (Total)	5.21	10	
Dibromofluoromethane (surrogate)	50.1	100%	
1,2-Dichloroethane-d4 (surrogate)	47.2	94%	
Toluene-d8 (surrogate)	51.3	103%	
4-bromofluorobenzene (surrogate)	44.8	90%	

Analysis Date/Time:

04/19/07/15:18

Analyst Initials

Your Projects. Our Passion.

Page 15 of 40



ENVISSION Laboratories, Inc.
 1439 Sadlier Circle West Drive
 Indianapolis, IN 46239
 Tel: 317.351.8632
 Fax: 317.351.8639
 www.envisionlaboratories.com

Client Name: QEPI
Project ID: Former Union St. Sunoco
Client Project Manager: Nivas Vijay
ENVISSION Project Number: 2007-698
Analytical Method: 8015M TPH-Ext C8-C36
Prep Method: 3520C
Analytical Batch: 041807E
Client Sample ID: SB-4
Envision Sample Number: 7-4421
Sample Matrix: water

Sample Collection Date/Time: 4/13/07 12:10
Sample Received Date/Time: 4/16/07 8:45

<u>Compounds</u>	<u>Sample Results (ug/L)</u>	<u>Reporting Limit (ug/L)</u>	<u>Flags</u>
TPH-Extended C8-C36	434	100	
o-Terphenyl (surrogate)	89%		
Analysis Date/Time:	04-20-07/05:15		
Analyst Initials:	bds		
Date Extracted:	4/17/2007		
Initial Sample Volume:	950 mL		
Final Volume:	1.0 mL		



ENVision Laboratories, Inc.
 1439 Sadlier Circle West Drive
 Indianapolis, IN 46239
 Tel: 317.351.8632
 Fax: 317.351.8639
 www.envisionlaboratories.com

Client Name: QEPI
Project ID: Former Union St. Sunoco
Client Project Manager: Nivas Vijay
ENVision Project Number: 2007-698
Analytical Method: 8015 GRO
Prep Method: 5030
Analytical Batch: 042407GW
Client Sample ID: SB-4
Envision Sample Number: 7-4421
Sample Matrix: water
Sample Collection Date/Time: 4/13/07 12:10
Sample Received Date/Time: 4/16/07 8:45

<u>Compounds</u>	<u>Sample Results (ug/L)</u>	<u>Reporting Limit (ug/L)</u>	<u>Flags</u>
TPH-Gasoline	< 100	100	
4-bromofluorobenzene (surrogate)	113%		
Analysis Date/Time:	04/24/07/22:05		
Analyst Initials	tjg		



ENVision Laboratories, Inc.
 1439 Sadler Circle West Drive
 Indianapolis, IN 46239
 Tel: 317.351.8632
 Fax: 317.351.8639
 www.envisionlaboratories.com

Client Name: QEPI
Project ID: Former Union St. Sunoco
Client Project Manager: Nivas Vijay
ENVision Project Number: 2007-698

Analytical Method: 6010/7470
Prep Method: 3010A

Client Sample ID: SB-4
Envision Sample Number: 7-4421
Sample Matrix: water

Sample Collection Date/Time: 4/13/07 12:10
Sample Received Date/Time: 4/16/07 8:45

<u>Compounds</u>	<u>Sample Results (mg/L)</u>	<u>Reporting Limit (mg/L)</u>	<u>Flags</u>
Arsenic	< 0.01	0.01	
Barium	< 0.1	0.1	
Cadmium	< 0.005	0.005	
Chromium	< 0.01	0.01	
Lead	< 0.01	0.01	
Mercury	< 0.002	0.002	
Selenium	< 0.01	0.01	
Silver	< 0.05	0.05	

ICP Analysis Date/Time:	4/30/2007 18:12	Hg Analysis Date/Time:	4/29/2007 10:31
Analyst Initials:	gjd	Hg Analyst Initials:	gjd
Date Digested:	4/28/2007	Date Digested:	4/28/2007
Initial Sample Volume:	50 mL	Initial Sample Volume:	50 mL
Final Volume:	50 mL	Final Volume:	50 mL
Analytical Batch:	043007icp	Analytical Batch:	042907hgw



ENVision Laboratories, Inc.
 1439 Sadler Circle West Drive
 Indianapolis, IN 46239
 Tel: 317.351.8632
 Fax: 317.351.8639
 www.envisionlaboratories.com

Client Name: QEPI
Project ID: Former Union St. Sunoco
Client Project Manager: Nivas Vijay
ENVision Project Number: 2007-698
Analytical Method: 8270 BNA/PAH-SIM
Prep Method: 3520C
BNA Analytical Batch: 042307B
Client Sample ID: SB-4
Envision Sample Number: 7-4421
Sample Matrix: water

Sample Collection Date/Time: 4/13/07 12:10
Sample Received Date/Time: 4/16/07 8:45

<u>BNA Compounds</u>	<u>Sample Results (ug/L)</u>	<u>Reporting Limit (ug/L)</u>	<u>Flags</u>
Aniline	< 10	10	
Benzoic Acid	< 50	50	
Benzyl Alcohol	< 20	20	
4-Bromophenylphenyl ether	< 10	10	
Di-n-butylphthalate	< 10	10	
Carbazole	< 20	20	
4-Chloro-3-methylphenol	< 20	20	
4-Chloroaniline	< 20	20	
bis(2-Chloroethoxy)methane	< 10	10	
bis(2-Chloroethyl)ether	< 10	10	
bis(2-Chloroisopropyl)ether	< 10	10	
2-Chloronaphthalene	< 10	10	
2-Chlorophenol	< 10	10	
4-Chlorophenylphenyl ether	< 10	10	
Dibenzofuran	< 10	10	
1,2-Dichlorobenzene	< 10	10	
1,3-Dichlorobenzene	< 10	10	
1,4-Dichlorobenzene	< 10	10	
3,3-Dichlorobenzidine	< 20	20	
2,4-Dichlorophenol	< 10	10	
Diethylphthalate	< 10	10	
2,4-Dimethylphenol	< 10	10	
Dimethylphthalate	< 10	10	
Di-n-butylphthalate	< 10	10	
4,6-Dinitro-2-methylphenol	< 50	50	
2,4-Dinitrophenol	< 50	50	
2,4-Dinitrotoluene	< 10	10	
2,6-Dinitrotoluene	< 10	10	
Di-n-octylphthalate	< 10	10	
Di-n-butylphthalate	< 5	5	
Hexachloro-1,3-butadiene	< 10	10	
Hexachlorobenzene	< 5	5	
Hexachlorocyclopentadiene	< 25	25	
Hexachloroethane	< 10	10	



ENVision Laboratories, Inc.
 1439 Sadlier Circle West Drive
 Indianapolis, IN 46239
 Tel: 317.351.8632
 Fax: 317.351.8639
 www.envisionlaboratories.com

8270 Continued...

<u>Compounds</u>	<u>Sample Results (ug/L)</u>	<u>Reporting Limit (ug/L)</u>	<u>Flags</u>
Isophorone	< 10	10	
2-Methylphenol (o-Cresol)	< 10	10	
3&4-Methylphenol	< 20	20	
2-Nitroaniline	< 50	50	
3-Nitroaniline	< 50	50	
4-Nitroaniline	<50	50	
Nitrobenzene	< 10	10	
2-Nitrophenol	< 10	10	
4-Nitrophenol	<50	50	
N-Nitroso-di-n-propylamine	< 10	10	
N-Nitrosodiphenylamine	< 10	10	
Pentachlorophenol	<50	50	
Phenol	< 10	10	
1,2,4-Trichlorobenzene	< 10	10	
2,4,5-Trichlorophenol	< 10	10	
2,4,6-Trichlorophenol	< 10	10	
2-Fluorophenol (surrogate)	116%		1
Phenol-d6 (surrogate)	128%		1
Nitrobenzene-d5 (surrogate)	90%		
2-Fluorobiphenyl (surrogate)	101%		
2,4,6-Tribromophenol (surrogate)	132%		
p-Terphenyl-d14 (surrogate)	102%		
Analysis Date/Time:	04-24-07/00:14		
Analyst Initials:	bds		
Date Extracted:	4/19/2007		
Initial Sample Volume:	950 mL		
Final Volume:	1.0 mL		

PAH-SIM Analytical Batch: 042607P

<u>PAH-SIM Compounds</u>	<u>Sample Results (ug/L)</u>	<u>Reporting Limit (ug/L)</u>	<u>Flags</u>
Acenaphthene	< 1.0	1.0	
Acenaphthylene	< 1.0	1.0	
Anthracene	< 0.10	0.10	
Benzo(a)anthracene	< 0.10	0.10	
Benzo(a)pyrene	< 0.10	0.10	
Benzo(b)fluoranthene	< 0.10	0.10	
Benzo(g,h,i)perylene	< 0.10	0.10	
Benzo(k)fluoranthene	< 0.10	0.10	
Chrysene	< 0.10	0.10	
Dibenzo(a,h)anthracene	< 0.10	0.10	
Fluoranthene	< 1.0	1.0	
Fluorene	< 1.0	1.0	
Indeno(1,2,3-cd)pyrene	< 0.022	0.022	
1-Methylnaphthalene	< 1.0	1.0	
2-Methylnaphthalene	2.0	1.0	
Phenanthrene	< 1.0	1.0	
Pyrene	< 1.0	1.0	
Analysis Date/Time:	04-27-07/02:01		
Analyst Initials	bds		



ENVision Laboratories, Inc.
 1439 Sadlier Circle West Drive
 Indianapolis, IN 46239
 Tel: 317.351.8632
 Fax: 317.351.8639
 www.envisionlaboratories.com

Client Name: QEPI
Project ID: Former Union St. Sunoco

Client Project Manager: Nivas Vijay

ENVision Project Number: 2007-698

Analytical Method: 8082

Prep Method: 3520C

Analytical Batch: 041807PCB

Client Sample ID: SB-4

Envision Sample Number: 7-4421

Sample Matrix: water

Sample Collection Date/Time: 4/13/07 12:10

Sample Received Date/Time: 4/16/07 8:45

<u>Compounds</u>	<u>Sample Results (ug/L)</u>	<u>Reporting Limit (ug/L)</u>	<u>Flags</u>
Aroclor 1016	< 0.50	0.5	
Aroclor 1221	< 0.50	0.5	
Aroclor 1232	< 0.50	0.5	
Aroclor 1242	< 0.50	0.5	
Aroclor 1248	< 0.50	0.5	
Aroclor 1254	< 0.50	0.5	
Aroclor 1260	< 0.50	0.5	
Tetrachloro-m-xylene (surrogate)	72%		
Decachlorobiphenyl (surrogate)	67%		
Analysis Date/Time:	04/25/07/17:05		
Analyst Initials:	tjg		
Date Extracted:	04/18/07		
Initial Sample Volume:	970mL		
Final Volume:	1.0 mL		



ENVISSION Laboratories, Inc.
 1439 Sadlier Circle West Drive
 Indianapolis, IN 46239
 Tel: 317.351.8632
 Fax: 317.351.8639
 www.envisionlaboratories.com

Client Name: QEPI
Project ID: Former Union St. Sunoco
Client Project Manager: Nivas Vijay
ENVISSION Project Number: 2007-698
Analytical Method: 8260 Volatiles
Prep Method: 5030B
Analytical Batch: 041907VW
Client Sample ID: SB-5
ENVISSION Sample Number: 7-4422
Sample Matrix: water
Sample Collection Date/Time: 4/13/07 12:55
Sample Received Date/Time: 4/16/07 8:45

<u>Compounds</u>	<u>Sample Results (ug/L)</u>	<u>Reporting Limit (ug/L)</u>	<u>Flags</u>
Acetone	< 100	100	
Acrolein	< 100	100	
Acrylonitrile	< 100	100	
Benzene	< 5	5	
Bromobenzene	< 5	5	
Bromochloromethane	< 5	5	
Bromodichloromethane	< 5	5	
Bromoform	< 5	5	
Bromomethane	< 5	5	
n-Butanol	< 50	50	
2-Butanone (MEK)	< 10	10	
n-Butylbenzene	< 5	5	
sec-Butylbenzene	< 5	5	
tert-Butylbenzene	< 5	5	
Carbon Disulfide	< 5	5	
Carbon Tetrachloride	< 5	5	
Chlorobenzene	< 5	5	
Chloroethane	< 5	5	
2-Chloroethylvinylether	< 50	50	
Chloroform	< 5	5	
Chloromethane	< 5	5	
2-Chlorotoluene	< 5	5	
4-Chlorotoluene	< 5	5	
1,2-Dibromo-3-chloropropane	< 5	5	
Dibromochloromethane	< 5	5	
1,2-Dibromoethane (EDB)	< 5	5	
Dibromomethane	< 5	5	
1,2-Dichlorobenzene	< 5	5	
1,3-Dichlorobenzene	< 5	5	
1,4-Dichlorobenzene	< 5	5	
trans-1,4-Dichloro-2-butene	< 100	100	
Dichlorodifluoromethane	< 5	5	



ENVision Laboratories, Inc.
 1439 Sadlier Circle West Drive
 Indianapolis, IN 46239
 Tel: 317.351.8632
 Fax: 317.351.8639
 www.envisionlaboratories.com

8260 continued...

<u>Compounds</u>	<u>Sample Results (ug/L)</u>	<u>Reporting Limit (ug/L)</u>	<u>Flags</u>
1,1-Dichloroethane	< 5	5	
1,2-Dichloroethane	< 5	5	
1,1-Dichloroethene	< 5	5	
cis-1,2-Dichloroethene	< 5	5	
trans-1,2-Dichloroethene	< 5	5	
1,2-Dichloropropane	< 5	5	
1,3-Dichloropropane	< 5	5	
2,2-Dichloropropane	< 5	5	
1,1-Dichloropropene	< 5	5	
cis-1,3-Dichloropropene	< 5	5	
trans-1,3-Dichloropropene	< 5	5	
Ethylbenzene	< 5	5	
Ethyl methacrylate	< 100	100	
Hexachloro-1,3-butadiene	< 5	5	
n-Hexane	< 10	10	
2-Hexanone	< 10	10	
Iodomethane	< 10	10	
Isopropylbenzene (Cumene)	< 5	5	
p-Isopropyltoluene	< 5	5	
Methylene chloride	< 5	5	
4-Methyl-2-pentanone (MIBK)	< 10	10	
Methyl-tert-butyl-ether	< 5	5	
Naphthalene	< 5	5	
n-Propylbenzene	< 5	5	
Styrene	< 5	5	
1,1,1,2-Tetrachloroethane	< 5	5	
1,1,2,2-Tetrachloroethane	< 5	5	
Tetrachloroethene	< 5	5	
Toluene	< 5	5	
1,2,3-Trichlorobenzene	< 5	5	
1,2,4-Trichlorobenzene	< 5	5	
1,1,1-Trichloroethane	< 5	5	
1,1,2-Trichloroethane	< 5	5	
Trichloroethene	< 5	5	
Trichlorofluoromethane	< 5	5	
1,2,3-Trichloropropane	< 5	5	
1,2,4-Trimethylbenzene	< 5	5	
1,3,5-Trimethylbenzene	< 5	5	
Vinyl acetate	< 10	10	
Vinyl chloride	< 2	2	
Xylene, M&P	< 5	5	
Xylene, Ortho	< 5	5	
Xylene (Total)	< 10	10	
Dibromofluoromethane (surrogate)	51.9	104%	
1,2-Dichloroethane-d4 (surrogate)	52.4	105%	
Toluene-d8 (surrogate)	54	108%	
4-bromofluorobenzene (surrogate)	43.7	87%	

Analysis Date/Time:
 Analyst Initials

04/19/07/15:40

Your Projects. Our Passion.

Page 23 of 40



ENVision Laboratories, Inc.
 1439 Sadlier Circle West Drive
 Indianapolis, IN 46239
 Tel: 317.351.8632
 Fax: 317.351.8639
 www.envisionlaboratories.com

Client Name: QEPI
Project ID: Former Union St. Sunoco
Client Project Manager: Nivas Vijay
ENVision Project Number: 2007-698
Analytical Method: 8015M TPH-Ext C8-C36
Prep Method: 3520C
Analytical Batch: 041807E
Client Sample ID: SB-5
Envision Sample Number: 7-4422
Sample Matrix: water

Sample Collection Date/Time: 4/13/07 12:55
Sample Received Date/Time: 4/16/07 8:45

<u>Compounds</u>	<u>Sample Results (ug/L)</u>	<u>Reporting Limit (ug/L)</u>	<u>Flags</u>
TPH-Extended C8-C36	< 100	100	
o-Terphenyl (surrogate)	77%		
Analysis Date/Time:	04-20-07/05:44		
Analyst Initials:	bds		
Date Extracted:	4/17/2007		
Initial Sample Volume:	960 mL		
Final Volume:	1.0 mL		



ENVision Laboratories, Inc.
 1439 Sadlier Circle West Drive
 Indianapolis, IN 46239
 Tel: 317.351.8632
 Fax: 317.351.8639
 www.envisionlaboratories.com

Client Name: QEPI

Project ID: Former Union St. Sunoco

Client Project Manager: Nivas Vijay

ENVision Project Number: 2007-698

Analytical Method: 8015 GRO
Prep Method: 5030
Analytical Batch: 042407GW

Client Sample ID: SB-5 **Sample Collection Date/Time:** 4/13/07 12:55
Envision Sample Number: 7-4422 **Sample Received Date/Time:** 4/16/07 8:45
Sample Matrix: water

<u>Compounds</u>	<u>Sample Results (ug/L)</u>	<u>Reporting Limit (ug/L)</u>	<u>Flags</u>
TPH-Gasoline	< 100	100	
4-bromofluorobenzene (surrogate)	111%		
Analysis Date/Time:	04/24/07/22:24		
Analyst Initials	tjg		



ENVision Laboratories, Inc.
 1439 Sadler Circle West Drive
 Indianapolis, IN 46239
 Tel: 317.351.8632
 Fax: 317.351.8639
 www.envisionlaboratories.com

8260 Quality Control Data

ENVision Batch Number: 042607VW

<u>Method Blank (MB):</u>	<u>MB Results (ug/L)</u>	<u>Rep Lim (ug/L)</u>	<u>Flag</u>
Methyl-tert-butyl-ether	< 5	5	
Benzene	< 5	5	
Toluene	< 5	5	
Ethylbenzene	< 5	5	
Xylene, M&P	< 5	5	
Xylene, Ortho	< 5	5	
Xylenes, Total	<10	10	
Dibromofluoromethane (surrogate)	102%		
1,2-Dichloroethane-d4 (surrogate)	101%		
Toluene-d8 (surrogate)	106%		
4-bromofluorobenzene (surrogate)	87%		
Analysis Date/Time:	04/26/07/12:49		
Analyst Initials	tjg		

<u>LCS/LCSD</u>	<u>LCS Results (ug/l)</u>	<u>LCS/LCSD Conc. (ug/l)</u>	<u>LCSD Result (ug/l)</u>	<u>LCS Rec.</u>	<u>LCSD Rec.</u>	<u>RPD</u>	<u>Flag</u>
Methyl-tert-butyl-ether	44.8	50	43.7	90%	87%	2.5%	
Benzene	55.1	50	51.7	110%	103%	6.4%	
Toluene	53.2	50	50.9	106%	102%	4.4%	
Ethylbenzene	48.6	50	46	97%	92%	5.5%	
Xylene, M&P	90.7	100	87	91%	87%	4.2%	
Xylene, Ortho	47.5	50	46.3	95%	93%	2.6%	
Dibromofluoromethane (surrogate)	88%		85%				
1,2-Dichloroethane-d4 (surrogate)	88%		92%				
Toluene-d8 (surrogate)	105%		110%				
4-bromofluorobenzene (surrogate)	93%		95%				
Analysis Date/Time:	04/26/07/12:05		04/26/07/12:27				
Analyst Initials	tjg		tjg				



ENVISSION Laboratories, Inc.
 1439 Sadlier Circle West Drive
 Indianapolis, IN 46239
 Tel: 317.351.8632
 Fax: 317.351.8639
 www.envisionlaboratories.com

8260 Quality Control Data

ENVISSION Batch Number: 042607VWB

<u>Method Blank (MB):</u>	<u>MB Results (ug/L)</u>	<u>Rep Lim (ug/L)</u>	<u>Flag</u>
Acetone	< 100	100	
Acrolein	< 100	100	
Acrylonitrile	< 100	100	
Benzene	< 5	5	
Bromobenzene	< 5	5	
Bromochloromethane	< 5	5	
Bromodichloromethane	< 5	5	
Bromoform	< 5	5	
Bromomethane	< 5	5	
n-Butanol	< 50	50	
2-Butanone (MEK)	< 10	10	
n-Butylbenzene	< 5	5	
sec-Butylbenzene	< 5	5	
tert-Butylbenzene	< 5	5	
Carbon Disulfide	< 5	5	
Carbon Tetrachloride	< 5	5	
Chlorobenzene	< 5	5	
Chloroethane	< 5	5	
2-Chloroethylvinylether	< 50	50	
Chloroform	< 5	5	
Chloromethane	< 5	5	
2-Chlorotoluene	< 5	5	
4-Chlorotoluene	< 5	5	
1,2-Dibromo-3-chloropropane	< 5	5	
Dibromochloromethane	< 5	5	
1,2-Dibromoethane (EDB)	< 5	5	
Dibromomethane	< 5	5	
1,2-Dichlorobenzene	< 5	5	
1,3-Dichlorobenzene	< 5	5	
1,4-Dichlorobenzene	< 5	5	
trans-1,4-Dichloro-2-butene	< 100	100	
Dichlorodifluoromethane	< 5	5	
1,1-Dichloroethane	< 5	5	
1,2-Dichloroethane	< 5	5	
1,1-Dichloroethene	< 5	5	
cis-1,2-Dichloroethene	< 5	5	
trans-1,2-Dichloroethene	< 5	5	
1,2-Dichloropropane	< 5	5	
1,3-Dichloropropane	< 5	5	
2,2-Dichloropropane	< 5	5	
1,1-Dichloropropene	< 5	5	
cis-1,3-Dichloropropene	< 5	5	
trans-1,3-Dichloropropene	< 5	5	
Ethylbenzene	< 5	5	
Ethyl methacrylate	< 100	100	



ENVISSION Laboratories, Inc.
 1439 Sadlier Circle West Drive
 Indianapolis, IN 46239
 Tel: 317.351.8632
 Fax: 317.351.8639
 www.envisionlaboratories.com

8260 QC Continued...

Method Blank (MB):	MB Results (ug/L)	Rep Lim (ug/L)
Hexachloro-1,3-butadiene	< 5	5
2-Hexanone	< 10	10
n-Hexane	< 10	10
Iodomethane	< 10	10
Isopropylbenzene (Cumene)	< 5	5
p-Isopropyltoluene	< 5	5
Methylene chloride	< 5	5
4-Methyl-2-pentanone (MIBK)	< 10	10
Methyl-tert-butyl-ether	< 5	5
Naphthalene	< 5	5
n-Propylbenzene	< 5	5
Styrene	< 5	5
1,1,1,2-Tetrachloroethane	< 5	5
1,1,2,2-Tetrachloroethane	< 5	5
Tetrachloroethene	< 5	5
Toluene	< 5	5
1,2,3-Trichlorobenzene	< 5	5
1,2,4-Trichlorobenzene	< 5	5
1,1,1-Trichloroethane	< 5	5
1,1,2-Trichloroethane	< 5	5
Trichloroethene	< 5	5
Trichlorofluoromethane	< 5	5
1,2,3-Trichloropropane	< 5	5
1,2,4-Trimethylbenzene	< 5	5
1,3,5-Trimethylbenzene	< 5	5
Vinyl acetate	< 10	10
Vinyl chloride	< 2	2
Xylene, M&P	< 5	5
Xylene, Ortho	< 5	5
Xylene (total)	< 10	10
Dibromofluoromethane (surrogate)	102%	
1,2-Dichloroethane-d4 (surrogate)	101%	
Toluene-d8 (surrogate)	106%	
4-bromofluorobenzene (surrogate)	87%	
Analysis Date/Time:	04/26/07/12:49	
Analyst Initials	tjg	



ENVision Laboratories, Inc.
 1439 Sadlier Circle West Drive
 Indianapolis, IN 46239
 Tel: 317.351.8632
 Fax: 317.351.8639
 www.envisionlaboratories.com

8260 QC Continued...

<u>LCS/LCSD</u>	<u>LCS Results (ug/l)</u>	<u>LCS/LCSD Conc. (ug/l)</u>	<u>LCSD Result (ug/l)</u>	<u>LCS Rec.</u>	<u>LCSD Rec.</u>	<u>RPD</u>	<u>Flag</u>
1,1-Dichloroethene	50.6	50	51	101%	102%	0.8%	
Benzene	55.1	50	51.7	110%	103%	6.4%	
Trichloroethene	53.2	50	50.9	106%	102%	4.4%	
Toluene	51.9	50	50.2	104%	100%	3.3%	
Chlorobenzene	50	50	47.2	100%	94%	5.8%	
Dibromofluoromethane (surrogate)	86%		85%				
1,2-Dichloroethane-d4 (surrogate)	88%		92%				
Toluene-d8 (surrogate)	105%		110%				
4-bromofluorobenzene (surrogate)	93%		95%				
Analysis Date/Time:	04/26/07/12:05		04/26/07/12:27				
Analyst Initials	tjg		tjg				



ENVision Laboratories, Inc.
 1439 Sadlier Circle West Drive
 Indianapolis, IN 46239
 Tel: 317.351.8632
 Fax: 317.351.8639
 www.envisionlaboratories.com

8260 Quality Control Data

ENVision Batch Number: 041907VW

<u>Method Blank (MB):</u>	<u>MB Results (ug/L)</u>	<u>Rep Lim (ug/L)</u>	<u>Flag</u>
Acetone	< 100	100	
Acrolein	< 100	100	
Acrylonitrile	< 100	100	
Benzene	< 5	5	
Bromobenzene	< 5	5	
Bromochloromethane	< 5	5	
Bromodichloromethane	< 5	5	
Bromoform	< 5	5	
Bromomethane	< 5	5	
n-Butanol	< 50	50	
2-Butanone (MEK)	< 10	10	
n-Butylbenzene	< 5	5	
sec-Butylbenzene	< 5	5	
tert-Butylbenzene	< 5	5	
Carbon Disulfide	< 5	5	
Carbon Tetrachloride	< 5	5	
Chlorobenzene	< 5	5	
Chloroethane	< 5	5	
2-Chloroethylvinylether	< 50	50	
Chloroform	< 5	5	
Chloromethane	< 5	5	
2-Chlorotoluene	< 5	5	
4-Chlorotoluene	< 5	5	
1,2-Dibromo-3-chloropropane	< 5	5	
Dibromochloromethane	< 5	5	
1,2-Dibromoethane (EDB)	< 5	5	
Dibromomethane	< 5	5	
1,2-Dichlorobenzene	< 5	5	
1,3-Dichlorobenzene	< 5	5	
1,4-Dichlorobenzene	< 5	5	
trans-1,4-Dichloro-2-butene	< 100	100	
Dichlorodifluoromethane	< 5	5	
1,1-Dichloroethane	< 5	5	
1,2-Dichloroethane	< 5	5	
1,1-Dichloroethene	< 5	5	
cis-1,2-Dichloroethene	< 5	5	
trans-1,2-Dichloroethene	< 5	5	
1,2-Dichloropropane	< 5	5	
1,3-Dichloropropane	< 5	5	
2,2-Dichloropropane	< 5	5	
1,1-Dichloropropene	< 5	5	
cis-1,3-Dichloropropene	< 5	5	
trans-1,3-Dichloropropene	< 5	5	
Ethylbenzene	< 5	5	
Ethyl methacrylate	< 100	100	



ENVision Laboratories, Inc.
 1439 Sadlier Circle West Drive
 Indianapolis, IN 46239
 Tel: 317.351.8632
 Fax: 317.351.8639
 www.envisionlaboratories.com

8260 QC Continued...

Method Blank (MB):	MB Results (ug/L)	Rep Lim (ug/L)
Hexachloro-1,3-butadiene	< 5	5
2-Hexanone	< 10	10
n-Hexane	< 10	10
Iodomethane	< 10	10
Isopropylbenzene (Cumene)	< 5	5
p-Isopropyltoluene	< 5	5
Methylene chloride	< 5	5
4-Methyl-2-pentanone (MIBK)	< 10	10
Methyl-tert-butyl-ether	< 5	5
Naphthalene	< 5	5
n-Propylbenzene	< 5	5
Styrene	< 5	5
1,1,1,2-Tetrachloroethane	< 5	5
1,1,2,2-Tetrachloroethane	< 5	5
Tetrachloroethene	< 5	5
Toluene	< 5	5
1,2,3-Trichlorobenzene	< 5	5
1,2,4-Trichlorobenzene	< 5	5
1,1,1-Trichloroethane	< 5	5
1,1,2-Trichloroethane	< 5	5
Trichloroethene	< 5	5
Trichlorofluoromethane	< 5	5
1,2,3-Trichloropropane	< 5	5
1,2,4-Trimethylbenzene	< 5	5
1,3,5-Trimethylbenzene	< 5	5
Vinyl acetate	< 10	10
Vinyl chloride	< 2	2
Xylene, M&P	< 5	5
Xylene, Ortho	< 5	5
Xylene (total)	< 10	10
Dibromofluoromethane (surrogate)	103%	
1,2-Dichloroethane-d4 (surrogate)	104%	
Toluene-d8 (surrogate)	109%	
4-bromofluorobenzene (surrogate)	89%	
Analysis Date/Time:	04/19/07/07:23	
Analyst Initials	tjg	



ENVision Laboratories, Inc.
 1439 Sadlier Circle West Drive
 Indianapolis, IN 46239
 Tel: 317.351.8632
 Fax: 317.351.8639
 www.envisionlaboratories.com

8260 QC Continued...

<u>LCS/LCSD</u>	<u>LCS Results (ug/l)</u>	<u>LCS/LCSD Conc.</u> <u>(ug/l)</u>	<u>LCSD Result</u> <u>(ug/l)</u>	<u>LCS</u> <u>Rec.</u>	<u>LCSD</u> <u>Rec.</u>	<u>RPD</u>	<u>Flag</u>
1,1-Dichloroethene	55.8	50	55	112%	110%	1.4%	
Benzene	58.2	50	57.6	116%	115%	1.0%	
Trichloroethene	55.7	50	55.4	111%	111%	0.5%	
Toluene	53.5	50	53.2	107%	106%	0.6%	
Chlorobenzene	55.4	50	56	111%	112%	1.1%	
Dibromofluoromethane (surrogate)	84%		85%				
1,2-Dichloroethane-d4 (surrogate)	88%		88%				
Toluene-d8 (surrogate)	104%		99%				
4-bromofluorobenzene (surrogate)	97%		97%				
Analysis Date/Time:	04/19/07/06:39		04/19/07/07:01				
Analyst Initials	tjg		tjg				



ENVision Laboratories, Inc.
 1439 Sadlier Circle West Drive
 Indianapolis, IN 46239
 Tel: 317.351.8632
 Fax: 317.351.8639
 www.envisionlaboratories.com

8015 TPH-Extended Range Quality Control Data

ENVision Batch Number: 041707DW

	MB Results	Reporting Limit	Flag
	(ug/L)	(ug/L)	
Method Blank (MB):	< 100	100	
TPH-Extended Range	76%		
o-Terphenyl (surrogate)			
Analysis Date/Time:	04-19-07/17:02		
Analyst Initials:	bds		
Date Extracted:	4/17/2007		
Initial Sample Volume:	1000 mL		
Final Volume:	1.0 mL		

	LCS Results	LCS/LCSD Conc.	LCSD Results	LCS	LCSD	RPD	Flag
	(ug/L)	(ug/L)	(ug/L)	Rec.	Rec.		
LCS/LCSD	744.86	1000	625.42	74%	63%	17.4%	
TPH-Extended Range	84%		79%				
o-Terphenyl (surrogate)							
Analysis Date/Time:	04-19-07/17:31		04-19-07/18:01				
Analyst Initials:	bds		bds				
Date Extracted:	4/17/2007		4/17/2007				
Initial Sample Volume:	1000 mL		1000 mL				
Final Volume:	1.0 mL		1.0 mL				



ENVision Laboratories, Inc.
 1439 Sadlier Circle West Drive
 Indianapolis, IN 46239
 Tel: 317.351.8632
 Fax: 317.351.8639
 www.envisionlaboratories.com

8015 TPH-Gasoline Quality Control Data

ENVision Batch Number: 042407GW

<u>Method Blank (MB):</u>	<u>MB Results (mg/L)</u>	<u>Rep Lim</u>	<u>Flag</u>
TPH-Gasoline	< 0.5 mg/L	0.5 mg/L	
4-bromofluorobenzene (surrogate)	90%		
Analysis Date/Time:	04/24/07/20:25		
Analyst Initials:	tjg		

<u>LCS/LCSD</u>	<u>LCS Results (mg/L)</u>	<u>LCS/LCSD Conc.(mg/L)</u>	<u>LCSD Result (mg/l)</u>	<u>LCS Rec.</u>	<u>LCSD Rec.</u>	<u>RPD</u>	<u>Flag</u>
TPH-Gasoline	7.77	8	8.45	97%	106%	8.4%	
4-bromofluorobenzene (surrogate)	84%		93%				
Analysis Date/Time:	04/24/07/19:45		04/24/07/20:44				
Analyst Initials	tjg		tjg				



ENVision Laboratories, Inc.
 1439 Sadlier Circle West Drive
 Indianapolis, IN 46239
 Tel: 317.351.8632
 Fax: 317.351.8639
 www.envisionlaboratories.com

6010B/7470A Metals Quality Control Data

ENVision Batch Number: 043007icp / 042907hgw

<u>Method Blank (MB):</u>	<u>MB Results (mg/L)</u>	<u>Rep Lim (mg/L)</u>	<u>Flag</u>
Arsenic	< 0.01	0.01	
Barium	< 0.1	0.1	
Cadmium	< 0.005	0.005	
Chromium	< 0.01	0.01	
Lead	< 0.01	0.01	
Mercury	< 0.002	0.002	
Selenium	< 0.01	0.01	
Silver	< 0.05	0.05	

Analysis Date/Time: 4/30/07 17:47icp / 4/29/07 10:03hg

Analyst Initials: gjd

<u>Laboratory Control Standard (LCS):</u>	<u>LCS Results(mg/L)</u>	<u>LCS Conc(mg/L)</u>	<u>% Rec</u>	<u>Flag</u>
Arsenic	0.54	0.50	108	
Barium	0.53	0.50	106	
Cadmium	0.53	0.50	106	
Chromium	0.55	0.50	110	
Lead	0.52	0.50	104	
Mercury	0.0052	0.005	104	
Selenium	0.52	0.50	104	
Silver	0.59	0.50	118	

Analysis Date/Time: 4/30/07 17:51icp / 4/29/07 10:07hg

Analyst Initials: gjd

<u>Matrix Spike/Matrix Spike Dup (MS/MSD)</u>	<u>Sample Results (mg/L)</u>	<u>MS Res(mg/L)</u>	<u>MSD Re: Spike C</u>	<u>MS Rec</u>	<u>MSD Rec</u>	<u>% D</u>	<u>Flag</u>
Arsenic	0	0.57	0.56	0.50	114%	112%	1.77
Barium	0	0.57	0.57	0.50	114%	114%	0
Cadmium	0	0.51	0.51	0.50	102%	102%	0
Chromium	0	0.55	0.53	0.50	110%	106%	3.704
Lead	0	0.51	0.51	0.50	102%	102%	0
Mercury	0	0.0044	0.0045	0.005	88%	90%	2.247
Selenium	0	0.49	0.49	0.50	98%	98%	0
Silver	0	0.59	0.58	0.50	118%	116%	1.709

Original Sample Number Spiked: 7-4420icp / 7-4890hg

Analysis Date/Time: 4/30/07 17:59icp / 4/29/07 10:44hg

Analyst Initials: gjd



ENVISSION Laboratories, Inc.
 1439 Sadlier Circle West Drive
 Indianapolis, IN 46239
 Tel: 317.351.8632
 Fax: 317.351.8639
 www.envisionlaboratories.com

8270 Quality Control Data

ENVISSION Batch Number: 041907BW

BNA Method Blank (MB):	Method Blank Results (ug/L)	Reporting Limit (ug/L)	Flag
Aniline	< 10	10	
Benzoic Acid	< 50	50	
Benzyl Alcohol	< 20	20	
4-Bromophenylphenyl ether	< 10	10	
Butylbenzylphthalate	< 10	10	
Carbazole	< 20	20	
4-Chloro-3-methylphenol	< 20	20	
4-Chloroaniline	< 20	20	
bis(2-Chloroethoxy)methane	< 10	10	
bis(2-Chloroethyl)ether	< 10	10	
bis(2-Chloroisopropyl)ether	< 10	10	
2-Chloronaphthalene	< 10	10	
2-Chlorophenol	< 10	10	
4-Chlorophenylphenyl ether	< 10	10	
Dibenzofuran	< 10	10	
1,2-Dichlorobenzene	< 10	10	
1,3-Dichlorobenzene	< 10	10	
1,4-Dichlorobenzene	< 10	10	
3,3-Dichlorobenzidine	< 20	20	
2,4-Dichlorophenol	< 10	10	
Diethylphthalate	< 10	10	
2,4-Dimethylphenol	< 20	20	
Dimethylphthalate	< 10	10	
Di-n-butylphthalate	< 10	10	
4,6-Dinitro-2-methylphenol	< 50	50	
2,4-Dinitrophenol	< 50	50	
2,4-Dinitrotoluene	< 10	10	
2,6-Dinitrotoluene	< 10	10	
Di-n-octylphthalate	< 10	10	
bis(2-Ethylhexyl)phthalate	< 5	5	
Hexachloro-1,3-butadiene	< 10	10	
Hexachlorobenzene	< 5	5	
Hexachlorocyclopentadiene	< 25	25	
Hexachloroethane	< 10	10	
Isophorone	< 10	10	
2-Methylphenol (o-Cresol)	< 10	10	
3&4-Methylphenol	< 20	20	
2-Nitroaniline	< 50	50	
3-Nitroaniline	< 50	50	
4-Nitroaniline	< 50	50	
Nitrobenzene	< 10	10	
2-Nitrophenol	< 10	10	
4-Nitrophenol	< 50	50	
N-Nitroso-di-n-propylamine	< 10	10	
N-Nitrosodiphenylamine	< 10	10	



ENVISSION Laboratories, Inc.
 1439 Sadlier Circle West Drive
 Indianapolis, IN 46239
 Tel: 317.351.8632
 Fax: 317.351.8639
 www.envisionlaboratories.com

8270 QC Continued...

	Method Blank Results (ug/L)	Reporting Limit (ug/L)	Flag
Pentachlorophenol	< 50	50	
Phenol	< 10	10	
1,2,4-Trichlorobenzene	< 10	10	
2,4,5-Trichlorophenol	< 10	10	
2,4,6-Trichlorophenol	< 10	10	
2-Fluorophenol (surrogate)	90%		
Phenol-d6 (surrogate)	97%		
Nitrobenzene-d5 (surrogate)	63%		
2-Fluorobiphenyl (surrogate)	87%		
2,4,6-Tribromophenol (surrogate)	72%		
p-Terphenyl-d14 (surrogate)	88%		
Analysis Date/Time:	04-23-07/17:49		
Analyst Initials:	bds		
Date Extracted:	4/19/2007		
Initial Sample Volume:	1000 mL		
Final Volume:	1.0 mL		

PAH-SIM Method Blank (MB):	Method Blank Result (ug/L)	Reporting Limit (ug/L)	Flag
Acenaphthene	< 1.0	1.0	
Acenaphthylene	< 1.0	1.0	
Anthracene	< 0.10	0.10	
Benzo(a)anthracene	< 0.10	0.10	
Benzo(a)pyrene	< 0.10	0.10	
Benzo(b)fluoranthene	< 0.10	0.10	
Benzo(g,h,i)perylene	< 0.10	0.10	
Benzo(k)fluoranthene	< 0.10	0.10	
Chrysene	< 0.10	0.10	
Dibenzo(a,h)anthracene	< 0.10	0.10	
Fluoranthene	< 1.0	1.0	
Fluorene	< 1.0	1.0	
Indeno(1,2,3-cd)pyrene	< 0.022	0.022	
2-methylnaphthalene	< 1.0	1.0	
Naphthalene	< 1.0	1.0	
Phenanthrene	< 1.0	1.0	
Pyrene	< 1.0	1.0	
Analysis Date/Time:	04-26-07/12:24		
Analyst Initials	bds		



ENVision Laboratories, Inc.
 1439 Sadlier Circle West Drive
 Indianapolis, IN 46239
 Tel: 317.351.8632
 Fax: 317.351.8639
 www.envisionlaboratories.com

8270 QC continued...

LCS/LCSD	LCS Result (ug/L)	LCS Conc. (ug/L)	LCSD Result (ug/L)	LCS Recovery	LCSD Recovery	RPD	Flag
Acenaphthene	34.53	50	34.14	69.1%	68.3%	1.1%	
4-Chloro-3-methylphenol	56.37	100	48.39	56.4%	48.4%	15.2%	
2-Chlorophenol	52.71	100	51.37	52.7%	51.4%	2.6%	
1,4-Dichlorobenzene	25.25	50	25.19	50.5%	50.4%	0.2%	
2,4-Dinitrotoluene	28.28	50	26.10	56.6%	52.2%	8.0%	
4-Nitrophenol	28.13	100	28.10	28.1%	28.1%	0.1%	
N-Nitroso-di-n-propylamine	36.97	50	34.25	73.9%	68.5%	7.6%	
Pentachlorophenol	51.11	100	49.24	51.1%	49.2%	3.7%	
Phenol	58.02	100	54.52	58.0%	54.5%	6.2%	
Pyrene	34.40	50	34.42	68.8%	68.8%	0.1%	
1,2,4-Trichlorobenzene	28.63	50	25.21	57.3%	50.4%	12.7%	
2-Fluorophenol (surrogate)	93%		97%				
Phenol-d6 (surrogate)	92%		90%				
Nitrobenzene-d5 (surrogate)	80%		73%				
2-Fluorobiphenyl (surrogate)	73%		77%				
2,4,6-Tribromophenol (surrogate)	92%		88%				
p-Terphenyl-d14 (surrogate)	87%		86%				
Analysis Date/Time:	04-23-07/18:22		04-23-07/18:54				
Analyst Initials:	bds		bds				
Date Extracted:	4/19/2007		4/19/2007				
Initial Sample Volume:	1000 mL		1000 mL				
Final Volume:	1.0 mL		1.0 mL				



ENVISSION Laboratories, Inc.
 1439 Sadlier Circle West Drive
 Indianapolis, IN 46239
 Tel: 317.351.8632
 Fax: 317.351.8639
 www.envisionlaboratories.com

PCB Quality Control Data

ENVISSION Batch Number: 041807PCB

Method Blank (MB):	Method Blank Result (ug/L)	Reporting Limit (ug/L)	Flag
Aroclor 1016	< 0.50	0.5	
Aroclor 1221	< 0.50	0.5	
Aroclor 1232	< 0.50	0.5	
Aroclor 1242	< 0.50	0.5	
Aroclor 1248	< 0.50	0.5	
Aroclor 1254	< 0.50	0.5	
Aroclor 1260	< 0.50	0.5	
Tetrachloro-m-xylene (surrogate)	91%		
Decachlorobiphenyl (surrogate)	66%		
Analysis Date/Time:	04/25/07/15:05		
Analyst Initials:	tjg		
Date Extracted:	04/18/07		
Initial Sample Volume:	1000mL		
Final Volume:	1.0 mL		

LCS/LCSD	LCS Results (ug/L)	LCS/LCSD Conc. (ug/L)	LCSD Results (ug/L)	LCS Recovery	LCSD Recovery	RPD	Flag
Aroclor 1016	51.50	50	44.10	103.0%	88.2%	15.5%	
Aroclor 1260	42.90	50	44.40	85.8%	88.8%	3.4%	
Tetrachloro-m-xylene (surrogate)	80%		95%				
Decachlorobiphenyl (surrogate)	69%		67%				
Analysis Date/Time:	04/25/07/15:35		04/25/07/16:05				
Analyst Initials:	tjg		tjg				
Date Extracted:	04/18/07		04/18/07				
Initial Sample Volume:	1000 mL		1000 mL				
Final Volume:	1.0 mL		1.0 mL				



ENVision Laboratories, Inc.
1439 Sadlier Circle West Drive
Indianapolis, IN 46239
Tel: 317.351.8632
Fax: 317.351.8639
www.envisionlaboratories.com

Flag Number**Comments**

- | | |
|---|--|
| 1 | Surrogate recovery is biased high due to matrix interference.
BDS 04-27-07 |
| 2 | Reported value is from a 10x dilution. TJG/BDS 04-27-07 |
| 3 | Reported value is below the reporting limit but above the mdl. TJG
04-27-07 |

