

### UTILITIES

ELECTRIC	TELEPHONE/COMMUNICATIONS	GAS & PIPELINE
American Electric Power Transmission Electric 700 Morrison Road Gahanna, OH 432320 (614) 552-1893 Contact: Barbara Dunlap	Level 3 Communications 1025 Eldorado Blvd. Broomfield, CO 80021 (720) 888-7280 Contact: Michael Karacson	Qwest/CenturyLink 13057 S. Monitor Ave. Palos Heights, IL 60463 (708) 837-7927 Contact: Kevin Huff
MCI/Verizon 730 W. Henry Street Indianapolis, IN 46225 (317) 685-8050 Contact: Chris Fowler	Sprint 400 W Grand Ave. Elmhurst, IL 90216 (847) 737-1869 Contact: Gerry Crain	NIPSCO 1039 Pennsylvania South Bend, IN 46601 (574) 284-2214 Contact: Phil Griffin
Infinity Fiber/Union Station/GAP 5520 W 76th Street Indianapolis, IN 46268 (317) 777-7583 Contact: Keith Hamm	Rogers Telecom 4804 N 40th Street Sheboygan, WI 53083 (920) 395-7125 Contact: Vicki Moran	CABLE/TV Comcast 1920 McKinley Avenue Mishawaka, IN 46545 (847) 789-1039 ext. 71039 Contact: Jay Castello
Windstream Communications 30486 E 400 N Strawn, IL 61775 (309) 838-0788 Contact: Jeff Taylor	Zayo Bandwidth 1710 Directors Row Ft Wayne, IN 46808 (260) 570-5677 Contact: Jason Gilpin	SANITARY SEWER/WATER City of South Bend-Sanitary 227 W. Jefferson Blvd. South Bend, IN 46601 (574) 235-9251 Contact: Tony Mulnar
Indiana Michigan Power-Distribution Electric 2929 Lathrop Street South Bend, IN 46628 (574) 236-1658 Contact: Antonio Macias	US Signal 7020 Southbelt Dr. SE Caledonia, MI 49315 (614) 483-6350 Contact: Rick Andricks	City of South Bend-Water 209 N. Main Street South Bend, IN 46601 (574) 235-5633 Contact: Ed Herman

### GENERAL NOTES

**	All earth shoulders, median areas, and cut and fill slopes shall be plain or mulch seeded except where sodding is specified
	Contractor shall verify existing flowline elevations to set the appropriate sump depth.

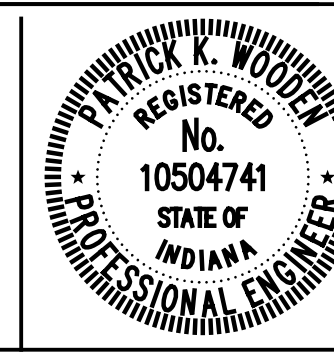
\*\* REPRESENTS GENERAL NOTES REQUIRED

### INDEX

SHEET NO.	DRAWING INDEX
1	Title Sheet
2	Index and General Notes
3	Plan Index Location Maps
4	Witnesses and Benchmarks
5	Geometric Tie-Up Details
6-8	Maintenance of Traffic Details
9	Intersection Details - Main Street
10-11	Intersection Details - Michigan Street
12	Spot Elevation Details - Main Street
13	Spot Elevation Details - Michigan Street
14	Traffic Signal Detail - Main Street
15-16	Traffic Signal Details - Michigan Street
17-21	Pavement Marking & Signing Plans - Main Street
22-26	Pavement Marking & Signing Plans - Michigan Street
27	Erosion Control Table

### REVISIONS

SHEET NO.	DATE	REVISED
3-1,8-1,8-2,8-3,8-4,8-5, 8-6,16-1,27-1	1/15/2016	Added Sheets for Addition of Milling & Resurfacing of Pavement
2,8-27	1/15/2016	Revised Detail, Pavement Marking & Signs
2,3-1,14,16-20,22-26	1/29/2016	Revised Pavement Marking & Signs
26-1	1/29/2016	Added Sheet; Sign Table
2,3-1,8-1,8-2,8-3,8-4,8-5, 8-6,17,18,22-26,26-1,27-1	2/12/2016	Mill & Resurface Added as Alternate Work
26-2	2/12/2016	Added Sheet; Miscellaneous Details



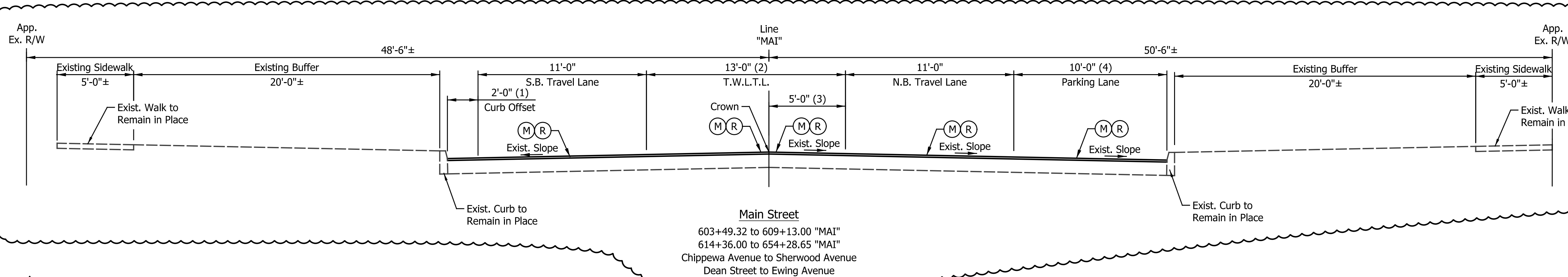
RECOMMENDED FOR APPROVAL	<i>Patrick Woodley</i> DESIGN ENGINEER	DATE	1/7/2016
DESIGNED:	MRR	DRAWN:	JRG
CHECKED:	PKW	CHECKED:	PKW

CITY OF SOUTH BEND

INDEX AND GENERAL NOTES

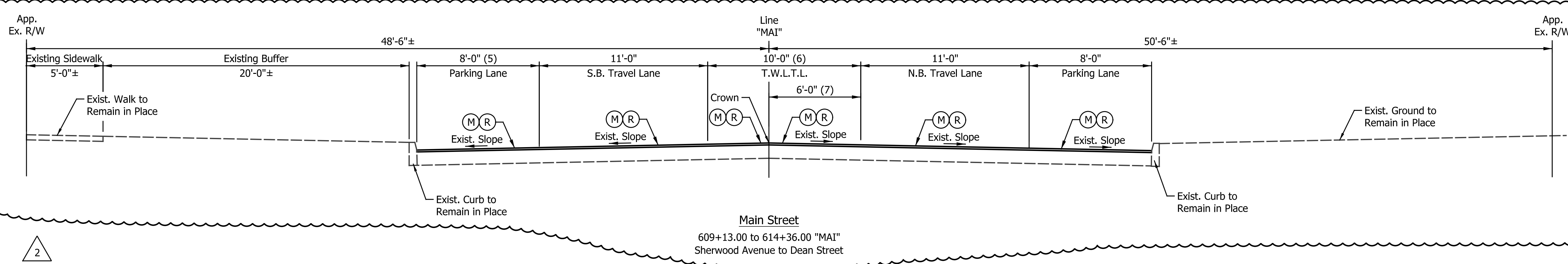
HORIZONTAL SCALE	BRIDGE FILE
N/A	N/A
VERTICAL SCALE	DESIGNATION
N/A	N/A
SURVEY BOOK	SHEETS
N/A	2 of 27
CONTRACT	PROJECT
N/A	115-019 (DIV A)

2



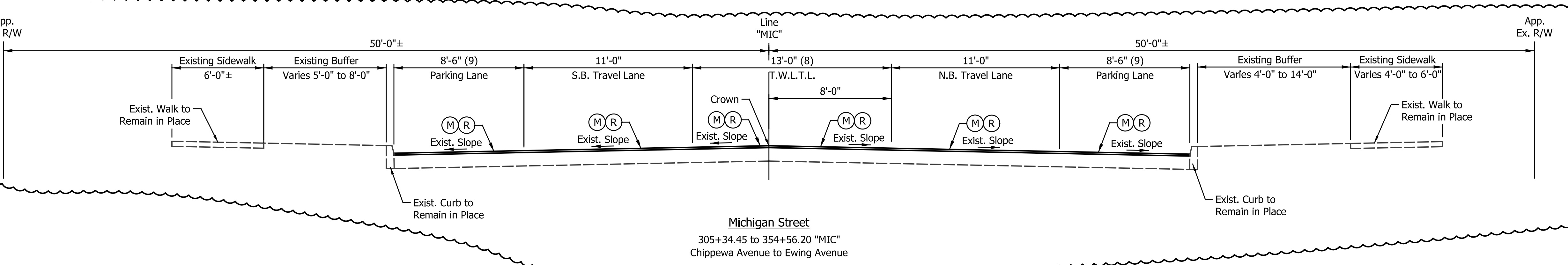
- (1) Varies 2'-0" to 8'-0" from 608+20.00 to 609+13.00 "MAI"
- (2) Varies 13'-0" to 10'-0" from 608+20.00 to 609+13.00 "MAI" Equals 11'-0" from 614+36.00 to 654+28.65 "MAI"
- (3) Equals 2'-0" from 614+36.00 to 654+28.65 "MAI"
- (4) Varies 10'-0" to 8'-0" from 608+20.00 to 609+13.00 "MAI" Equals 8'-0" from 614+36.00 to 654+28.65 "MAI"

2



- (5) Varies 8'-0" to 2'-0" from 613+73.00 to 614+36.00 "MAI"
- (6) Varies 10'-0" to 11'-0" from 613+73.00 to 614+36.00 "MAI"
- (7) Varies 6'-0" to 2'-0" from 613+73.00 to 614+36.00 "MAI"

2



- (8) Varies 10'-0" to 13'-0" from 305+34.45 to 306+00.00 "MIC" Equals 11'-0" from 328+19.00 to 331+04.00 "MIC"
- (9) Equals 10'-0" from 305+34.45 to 314+16.00 "MIC" Varies from 10'-0" to 8'-6" from 314+16.00 to 314+61.00 "MIC"

**ALTERNATE WORK ITEMS  
MILLING & RESURFACING**

(M) (R) 603+49.32 to 654+28.65 "MAI"

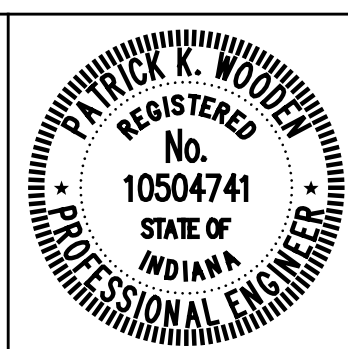
(M) (R) 305+34.45 to 354+56.20 "MIC"

3

**LEGEND**

- (M) Milling, Asphalt, 1.5"
- (R) 165 #/Syd QC/QA-HMA, 4, 76, Surface, 9.5 mm

DATE	REVISION
1/15/2016	REV 1: Added Sheet
1/29/2016	REV 2: Adjustments for Consistency
2/12/2016	REV 3: Mill & Resurface Added as Alternate Work



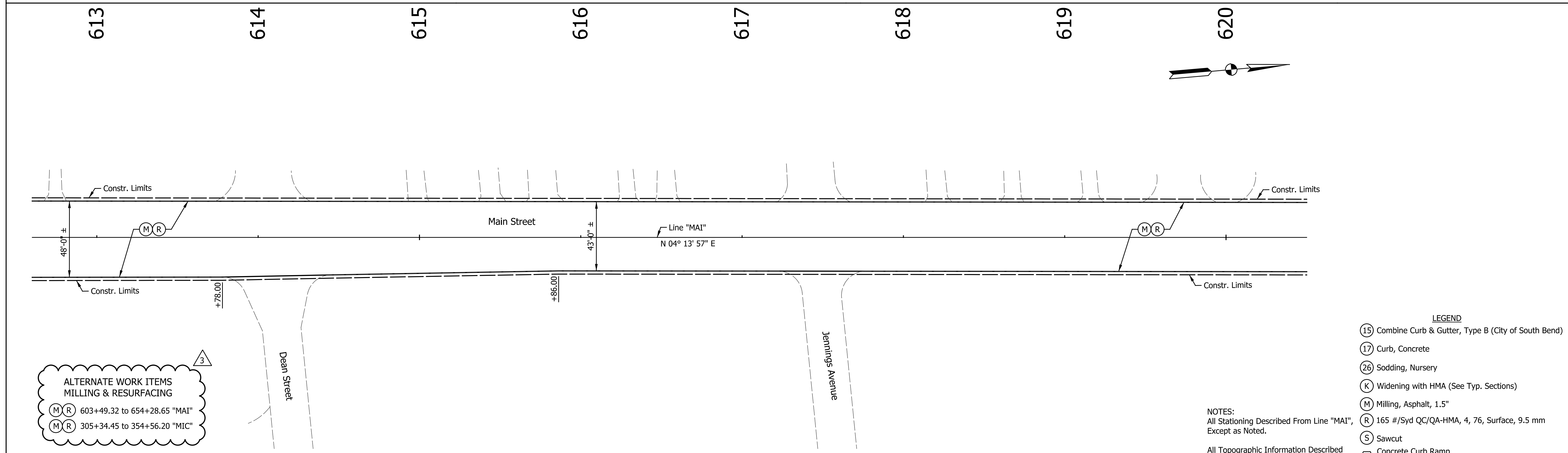
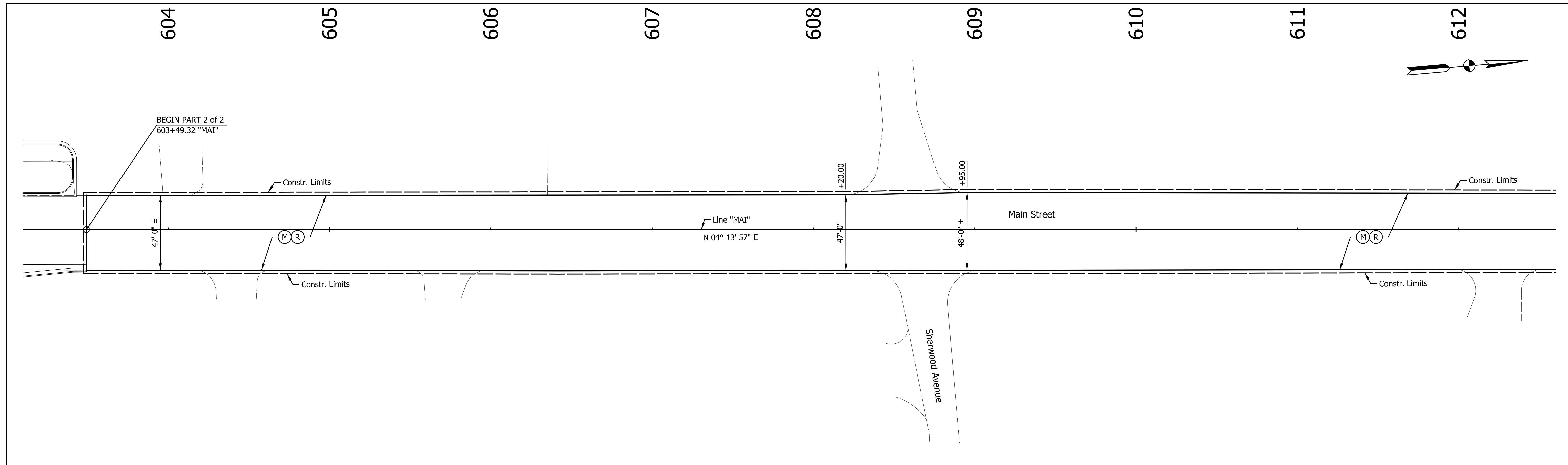
RECOMMENDED FOR APPROVAL	<i>Patrick Woodson</i>	1/15/2016
DESIGNED:	MRR	DRAWN:
CHECKED:	PKW	CHECKED:

CITY OF SOUTH BEND

**TYPICAL CROSS SECTIONS  
MAIN AND MICHIGAN STREETS**

HORIZONTAL SCALE	BRIDGE FILE
1/4" = 1'-0"	N/A
VERTICAL SCALE	DESIGNATION
N/A	N/A
SURVEY BOOK	SHEETS
N/A	3-1 of 27
CONTRACT	PROJECT
N/A	115-019 (DIV A)

I:\04\1351\_South Bend\201401351\_South Bend.dwg

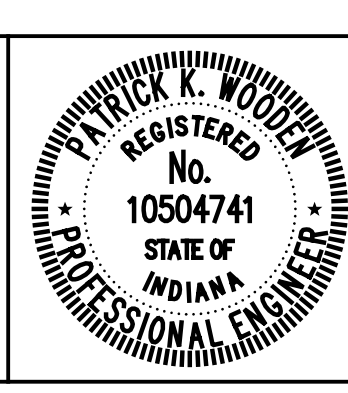


ALTERNATE WORK ITEMS  
MILLING & RESURFACING

(M R) 603+49.32 to 654+28.65 "MAI"  
(M R) 305+34.45 to 354+56.20 "MIC"

- LEGEND**
- (15) Combine Curb & Gutter, Type B (City of South Bend)
  - (17) Curb, Concrete
  - (26) Sodding, Nursery
  - (K) Widening with HMA (See Typ. Sections)
  - (M) Milling, Asphalt, 1.5"
  - (R) 165 #/Syd QC/QA-HMA, 4, 76, Surface, 9.5 mm
  - (S) Sawcut
  - (X) Concrete Curb Ramp (Type Indicate by Letter inside Hexagon)
- NOTES:**  
All Stationing Described From Line "MAI", Except as Noted.  
All Topographic Information Described From Line "MAI", Except as Noted.

DATE	REVISION
1/15/2016	REV 1: Added Sheet
2/12/2016	REV 3: Mill & Resurface Added as Alternate Work

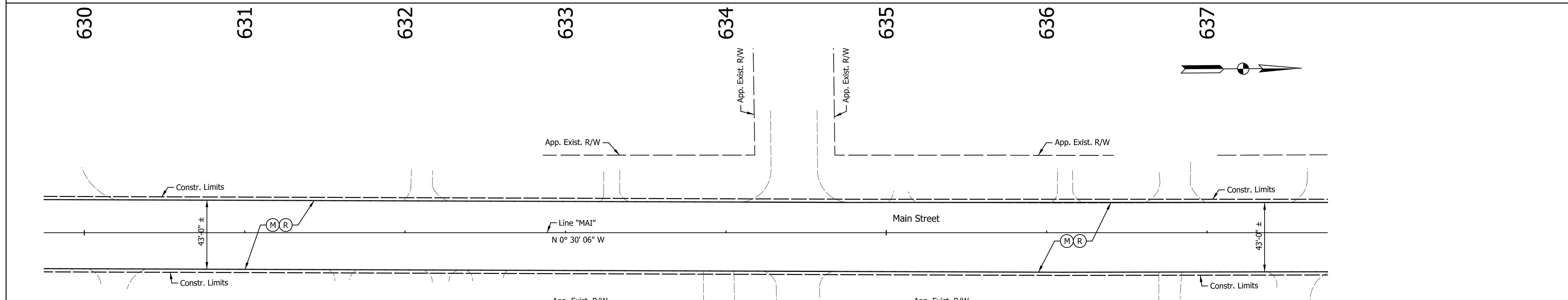
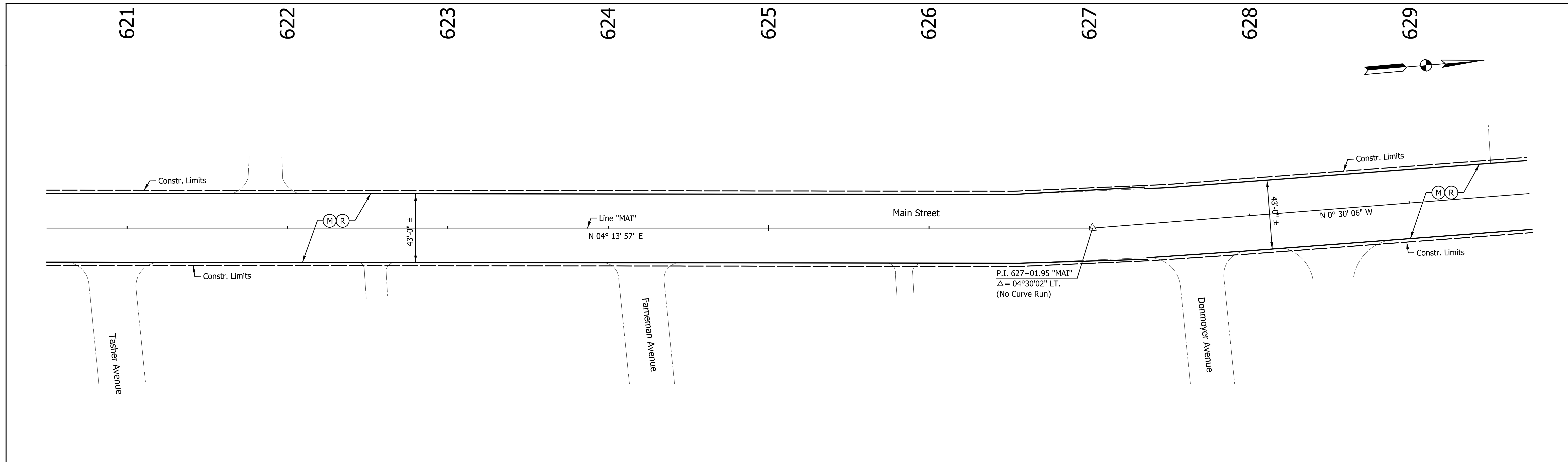
RECOMMENDED FOR APPROVAL	<i>Patrick Woodley</i>	DESIGN ENGINEER	DATE
DESIGNED:	MRR	DRAWN:	JRG
CHECKED:	PKW	CHECKED:	PKW

CITY OF SOUTH BEND

PLAN - LINE "MAI"  
MAIN STREET

HORIZONTAL SCALE	BRIDGE FILE
1" = 30'	N/A
VERTICAL SCALE	DESIGNATION
N/A	N/A
SURVEY BOOK	SHEETS
N/A	8-1 of 27
CONTRACT	PROJECT
N/A	115-019 (DIV A)

I:\Info\Projects\201401351\_South Bend.dwg



**ALTERNATE WORK ITEMS  
MILLING & RESURFACING**

- (M) (R) 603+49.32 to 654+28.65 "MAI"
- (M) (R) 305+34.45 to 354+56.20 "MIC"

- LEGEND**
- (15) Combine Curb & Gutter, Type B (City of South Bend)
  - (17) Curb, Concrete
  - (26) Sodding, Nursery
  - (K) Widening with HMA (See Typ. Sections)
  - (M) Milling, Asphalt, 1.5"
  - (R) 165 #/Syd QC/QA-HMA, 4, 76, Surface, 9.5 mm
  - (S) Sawcut
  - (X) Concrete Curb Ramp (Type Indicate by Letter inside Hexagon)
- NOTES:**  
All Stationing Described From Line "MAI", Except as Noted.  
All Topographic Information Described From Line "MAI", Except as Noted.

DATE	REVISION
1/15/2016	REV 1: Added Sheet
2/12/2016	REV 3: Mill & Resurface Added as Alternate Work

RECOMMENDED FOR APPROVAL: *Patrick Woodley* DESIGN ENGINEER DATE: 1/15/2016

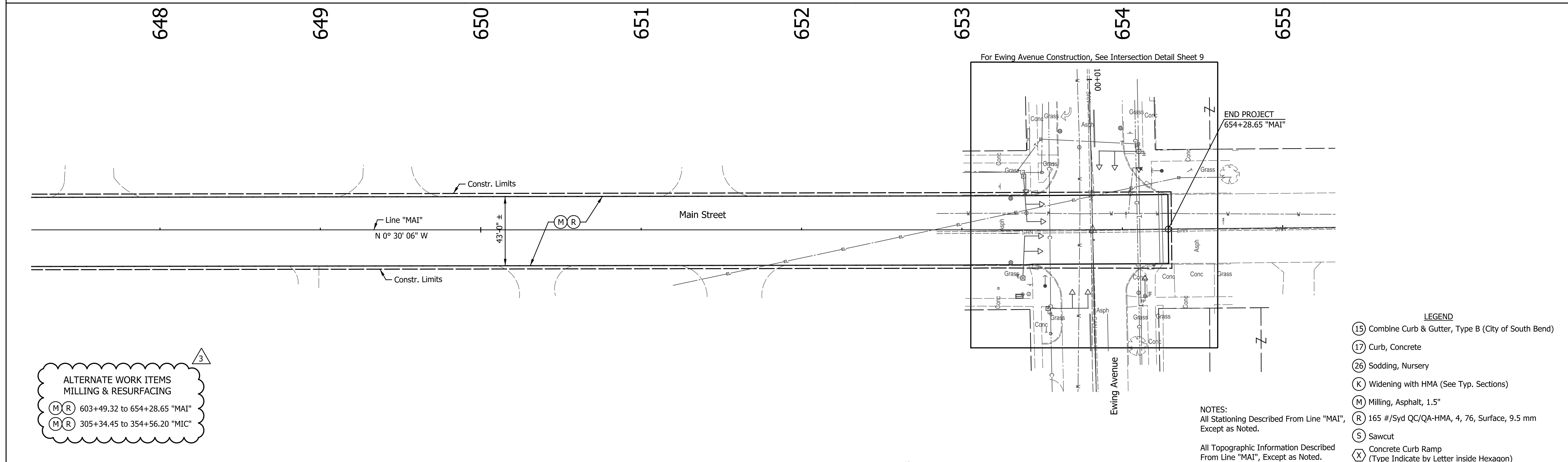
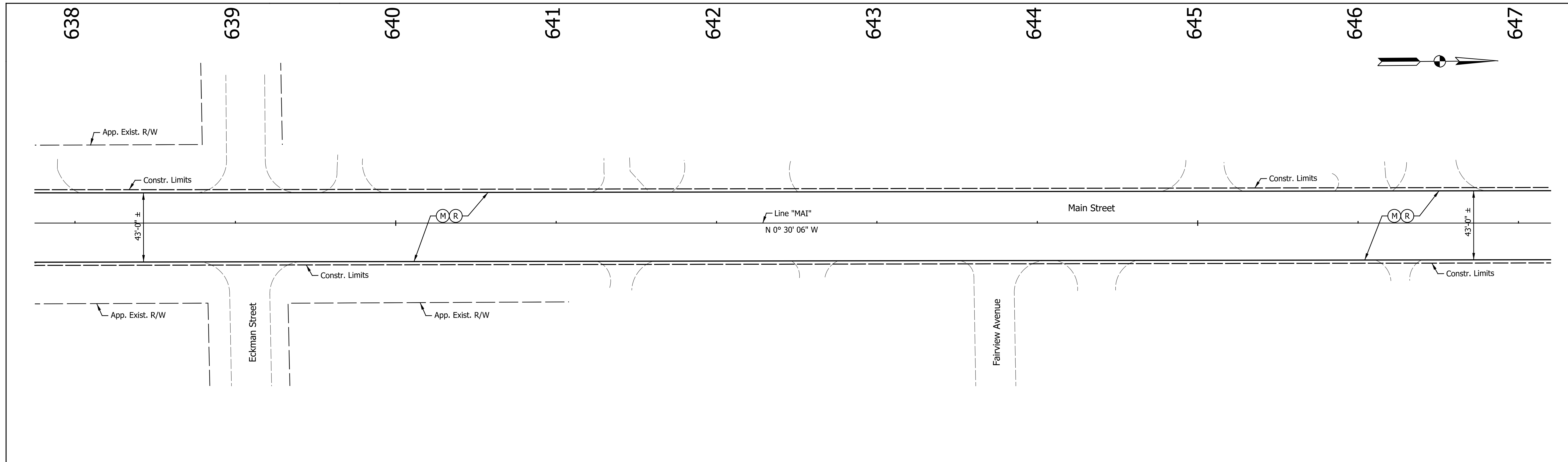
DESIGNED: MRR DRAWN: JRG

CHECKED: PKW CHECKED: PKW

CITY OF SOUTH BEND	
PLAN - LINE "MAI"	
MAIN STREET	

HORIZONTAL SCALE	BRIDGE FILE
1" = 30'	N/A
VERTICAL SCALE	DESIGNATION
N/A	N/A
SURVEY BOOK	SHEETS
N/A	8-2 of 27
CONTRACT	PROJECT
N/A	115-019 (DIV A)

I:\Info\Projects\201401351\_S\Main.dwg  
 2/15/2016 5:45:11 PM



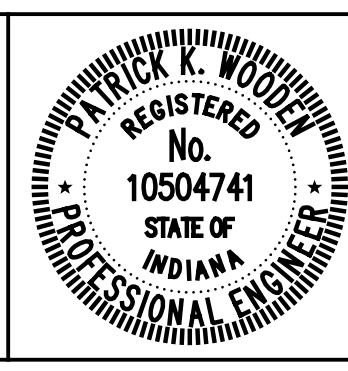
3

**ALTERNATE WORK ITEMS  
MILLING & RESURFACING**

(M) (R) 603+49.32 to 654+28.65 "MAI"  
(M) (R) 305+34.45 to 354+56.20 "MIC"

- LEGEND**
- (15) Combine Curb & Gutter, Type B (City of South Bend)
  - (17) Curb, Concrete
  - (26) Sodding, Nursery
  - (K) Widening with HMA (See Typ. Sections)
  - (M) Milling, Asphalt, 1.5"
  - (R) 165 #/Syd QC/QA-HMA, 4, 76, Surface, 9.5 mm
  - (S) Sawcut
  - (X) Concrete Curb Ramp (Type Indicate by Letter inside Hexagon)
- NOTES:  
All Stationing Described From Line "MAI", Except as Noted.  
All Topographic Information Described From Line "MAI", Except as Noted.

DATE	REVISION
1/15/2016	REV 1: Added Sheet
2/12/2016	REV 3: Mill & Resurface Added as Alternate Work

RECOMMENDED FOR APPROVAL	<i>Patrick Woodley</i>	1/15/2016	
DESIGNED:	MRR	DRAWN:	JRG
CHECKED:	PKW	CHECKED:	PKW

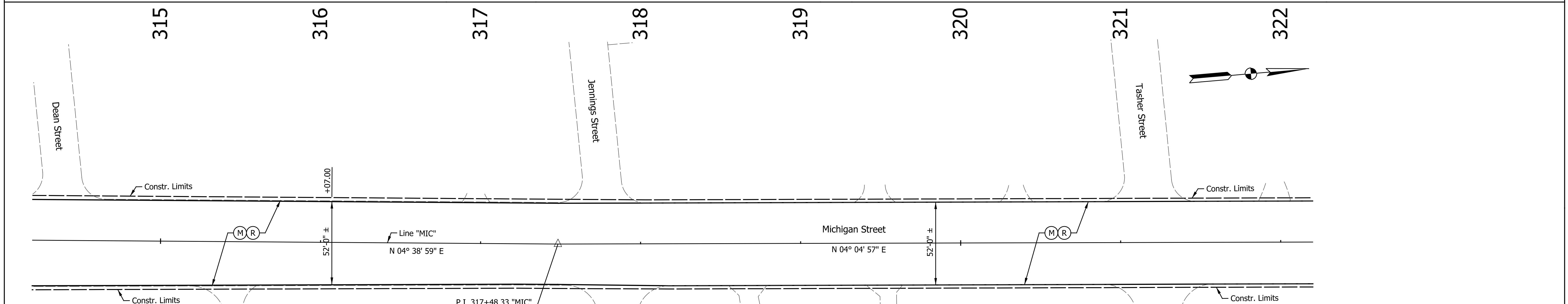
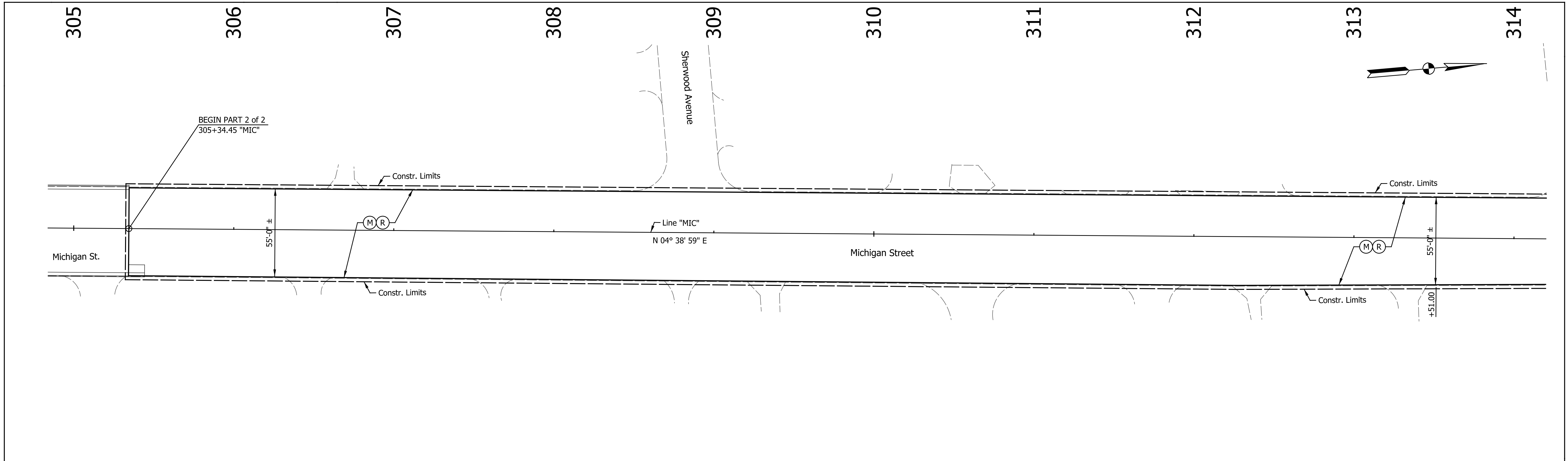
CITY OF SOUTH BEND

**PLAN - LINE "MAI"**

**MAIN STREET**

HORIZONTAL SCALE	BRIDGE FILE
1" = 30'	N/A
VERTICAL SCALE	DESIGNATION
N/A	N/A
SURVEY BOOK	SHEETS
N/A	8-3 of 27
CONTRACT	PROJECT
N/A	115-019 (DIV A)

I:\04\1351\_S\main.dwg  
 2/14/2016 5:45:13 PM



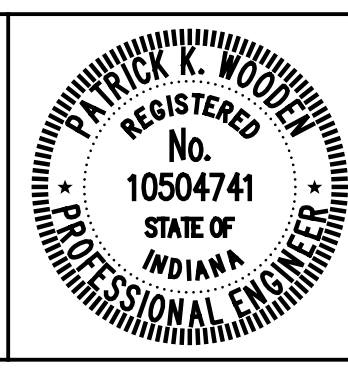
**ALTERNATE WORK ITEMS  
MILLING & RESURFACING**

(M R) 603+49.32 to 654+28.65 "MAI"  
(M R) 305+34.45 to 354+56.20 "MIC"

P.I. 317+48.33 "MIC"  
Δ = 00°34'02" LT.  
(No Curve Run)

- LEGEND**
- (15) Combine Curb & Gutter, Type B (City of South Bend)
  - (17) Curb, Concrete
  - (26) Sodding, Nursery
  - (K) Widening with HMA (See Typ. Sections)
  - (M) Milling, Asphalt, 1.5"
  - (R) 165 #/Syd QC/QA-HMA, 4, 76, Surface, 9.5 mm
  - (S) Sawcut
  - (X) Concrete Curb Ramp (Type Indicate by Letter inside Hexagon)
- NOTES:**  
All Stationing Described From Line "MIC", Except as Noted.  
All Topographic Information Described From Line "MIC", Except as Noted.

DATE	REVISION
1/15/2016	REV 1: Added Sheet
2/12/2016	REV 3: Mill & Resurface Added as Alternate Work

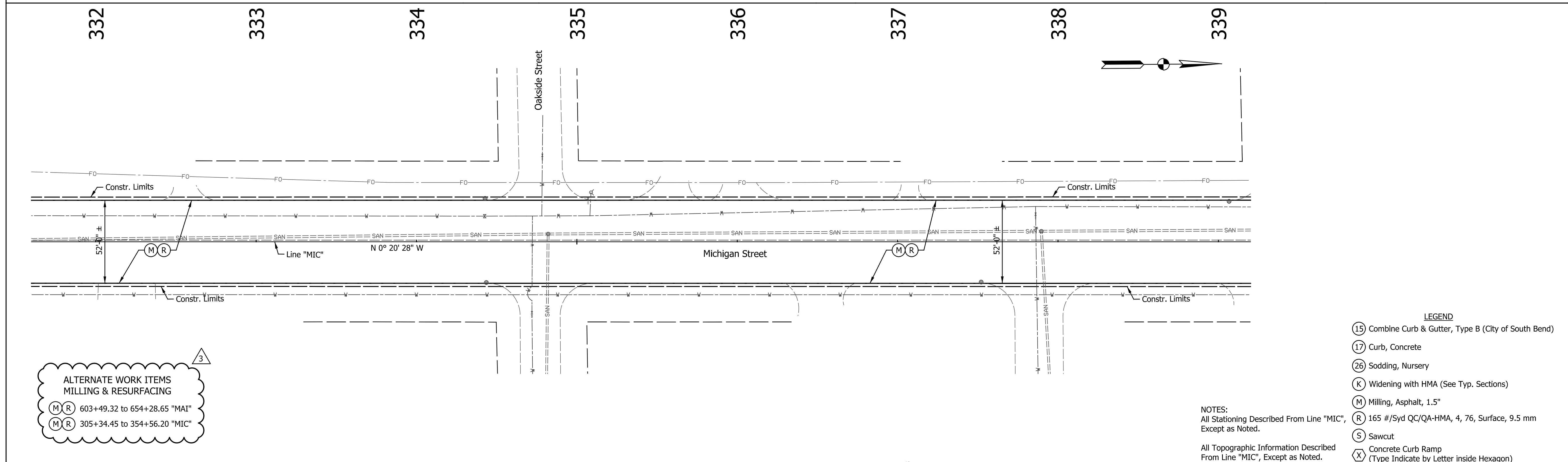
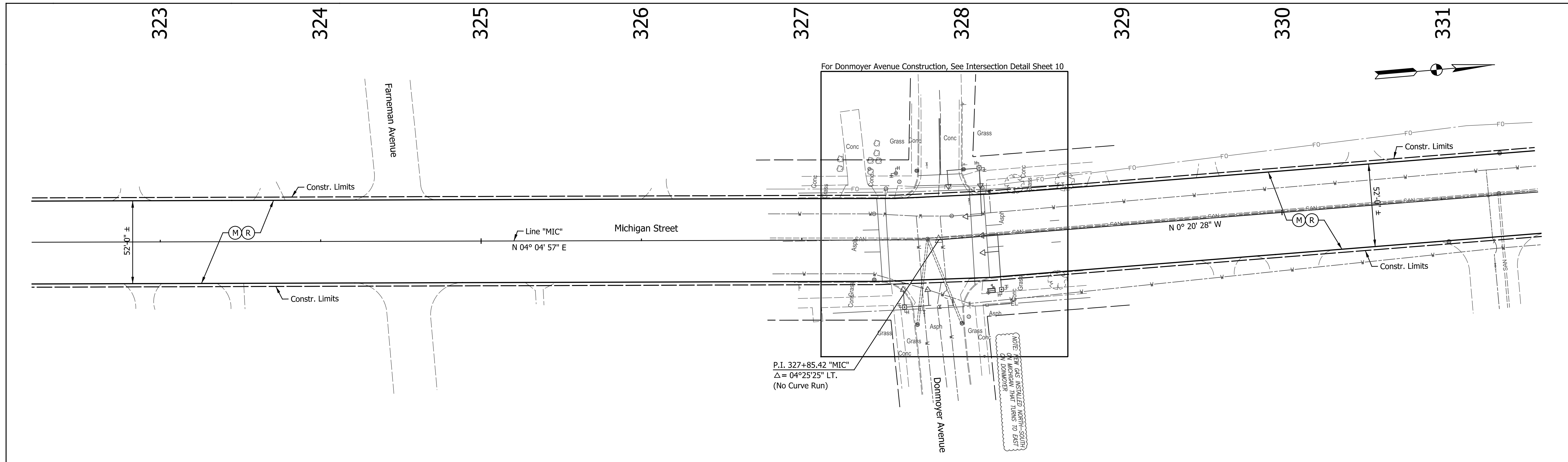
RECOMMENDED FOR APPROVAL	<i>Patrick Woodley</i>	DESIGN ENGINEER	DATE
DESIGNED:	MRR	DRAWN:	JRG
CHECKED:	PKW	CHECKED:	PKW

CITY OF SOUTH BEND

PLAN - LINE "MAI"  
MICHIGAN STREET

HORIZONTAL SCALE	BRIDGE FILE
1" = 30'	N/A
VERTICAL SCALE	DESIGNATION
N/A	N/A
SURVEY BOOK	SHEETS
N/A	8-4 of 27
CONTRACT	PROJECT
N/A	115-019 (DIV A)

I:\info\p1401351\Drawings\South Project\201401351.RD.CD.MIC.04.dgn



DATE	REVISION
1/15/2016	REV 1: Added Sheet
2/12/2016	REV 3: Mill & Resurface Added as Alternate Work

RECOMMENDED FOR APPROVAL

*Patrick Woodson*  
 DESIGN ENGINEER

1/15/2016  
 DATE

DESIGNED: MRR DRAWN: JRG

CHECKED: PKW CHECKED: PKW

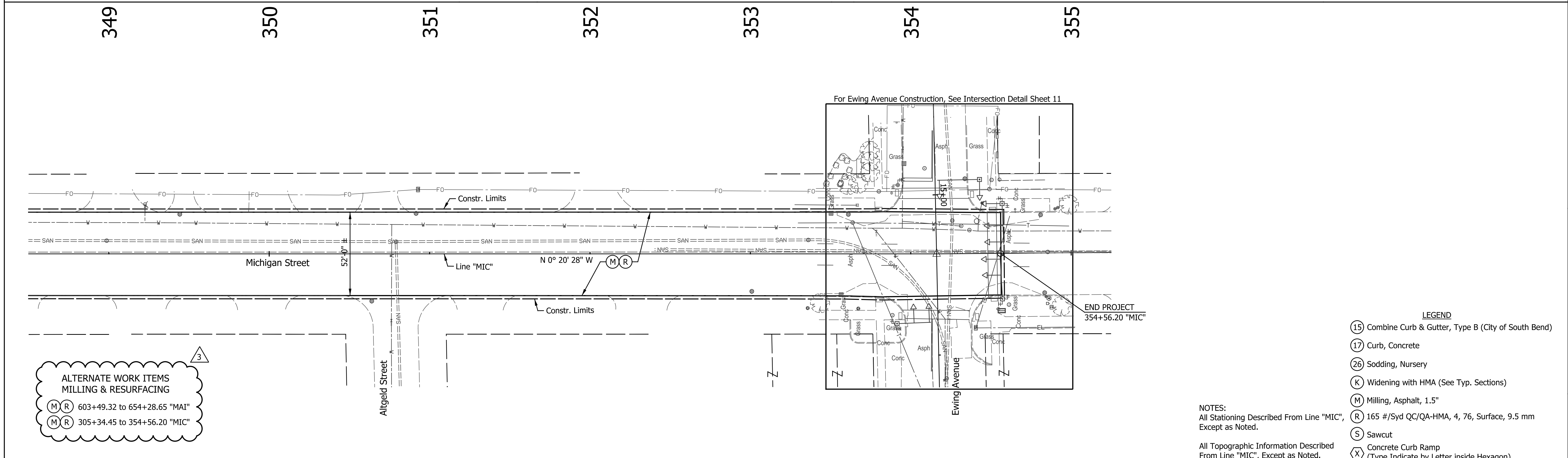
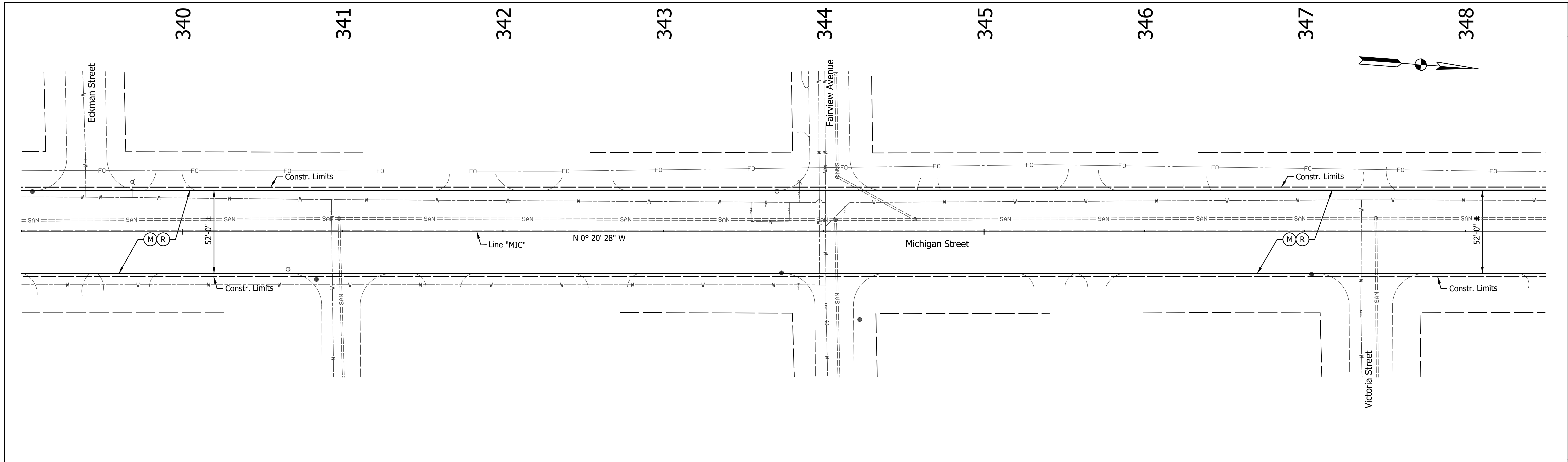
REGISTERED PROFESSIONAL ENGINEER  
 No. 10504741  
 STATE OF INDIANA

CITY OF SOUTH BEND

PLAN - LINE "MAI"  
 MICHIGAN STREET

HORIZONTAL SCALE	BRIDGE FILE
1" = 30'	N/A
VERTICAL SCALE	DESIGNATION
N/A	N/A
SURVEY BOOK	SHEETS
N/A	8-5 of 27
CONTRACT	PROJECT
N/A	115-019 (DIV A)

I:\p\p14\m14\201401351\_South Bend.dwg  
 2/15/2016 5:45:20 PM



3

ALTERNATE WORK ITEMS  
MILLING & RESURFACING

(M) 603+49.32 to 654+28.65 "MAI"

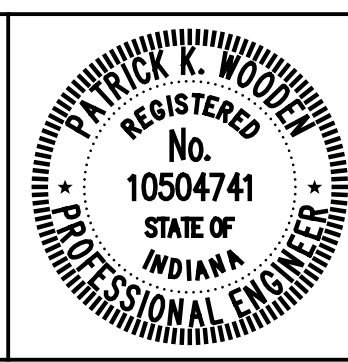
(R) 305+34.45 to 354+56.20 "MIC"

- LEGEND
- (15) Combine Curb & Gutter, Type B (City of South Bend)
  - (17) Curb, Concrete
  - (26) Sodding, Nursery
  - (K) Widening with HMA (See Typ. Sections)
  - (M) Milling, Asphalt, 1.5"
  - (R) 165 #/Syd QC/QA-HMA, 4, 76, Surface, 9.5 mm
  - (S) Sawcut
  - (X) Concrete Curb Ramp (Type Indicate by Letter inside Hexagon)

NOTES:  
All Stationing Described From Line "MIC",  
Except as Noted.

All Topographic Information Described  
From Line "MIC", Except as Noted.

DATE	REVISION
1/15/2016	REV 1: Added Sheet
2/12/2016	REV 3: Mill & Resurface Added as Alternate Work



RECOMMENDED FOR APPROVAL: *Patrick Woodley*  
DESIGN ENGINEER DATE: 1/15/2016

DESIGNED: MRR DRAWN: JRG

CHECKED: PKW CHECKED: PKW

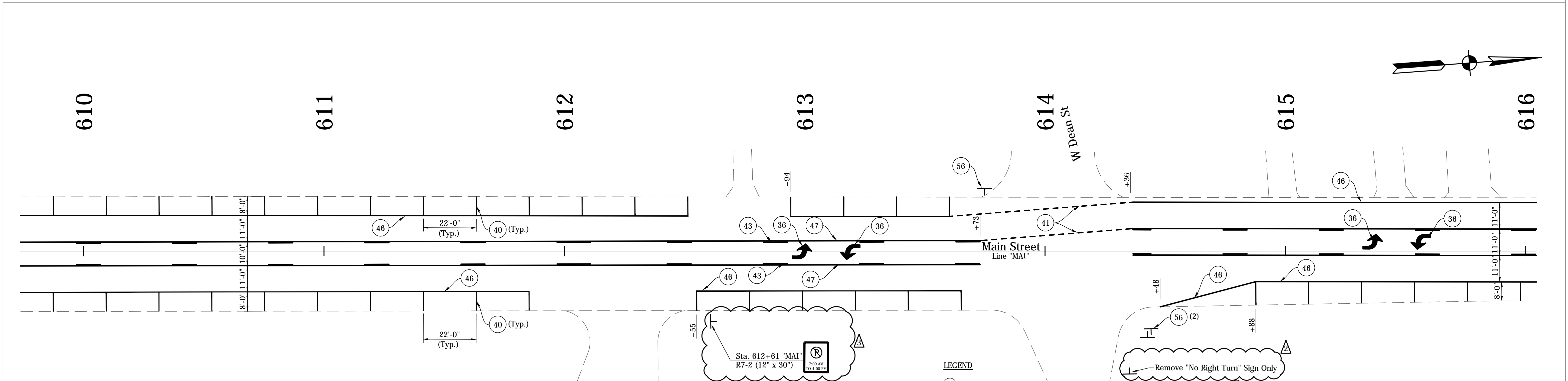
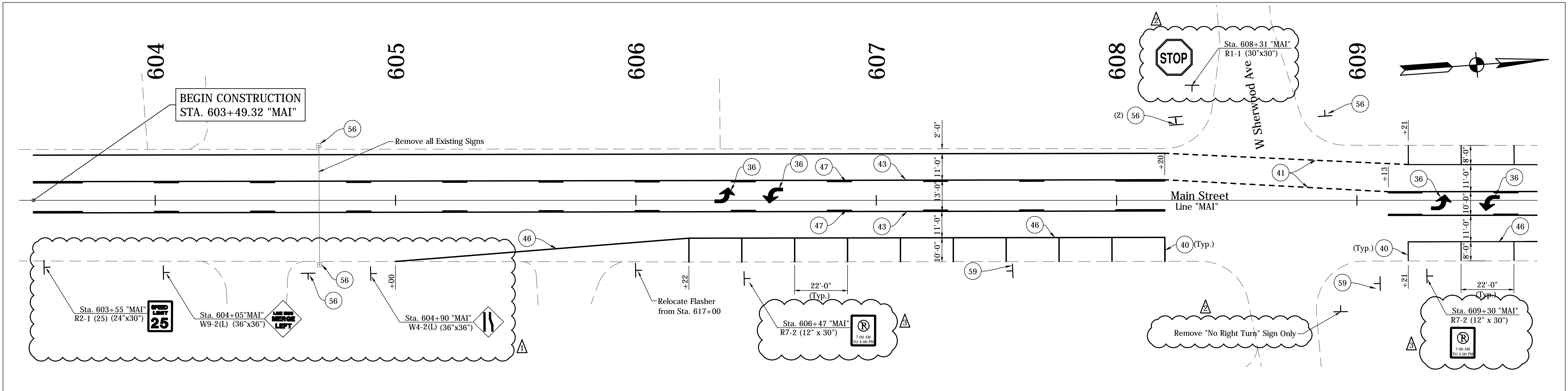
CITY OF SOUTH BEND

PLAN - LINE "MAI"  
MICHIGAN STREET

HORIZONTAL SCALE	BRIDGE FILE
1" = 30'	N/A
VERTICAL SCALE	DESIGNATION
N/A	N/A
SURVEY BOOK	SHEETS
N/A	8-6 of 27
CONTRACT	PROJECT
N/A	115-019 (DIV A)

I:\In-House\Projects\201401351\_South Bend.dwg





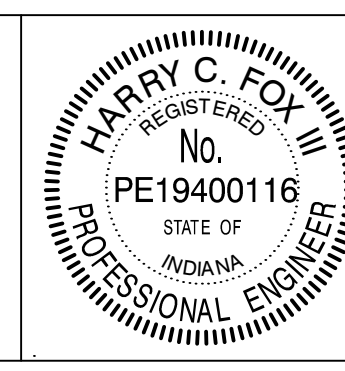
NOTES:  
 See Traffic Signal Detail Sheets For Additional Signage on Signal Poles.  
 Existing Signs to Remain in Place, Unless Otherwise Noted.  
 All Stationing Described from Line "MAI", Except as Noted.

**LEGEND**

- (34) Pavement Message Markings, Thermoplastic, Bike Symbol, 72 in.
- (35) Pavement Message Markings, Thermoplastic, Arrow, 72 in.
- (36) Pavement Message Markings, Thermoplastic, Lane Indication Arrow
- (38) Transverse Markings, Thermoplastic, Stop Line, White, 24 in.
- (40) Parallel Parking Spaces, See Detail
- (41) Line, Thermoplastic, Dotted, White, 6 in. (2' Line, 2' Gap)
- (43) Line, Thermoplastic, Broken, Yellow, 4 in.
- (45) Line, Thermoplastic, Solid, White, 6 in.
- (46) Line, Thermoplastic, Solid, White, 4 in.
- (47) Line, Thermoplastic, Solid, Yellow, 4 in.
- (55) Pavement Message Markings, Thermoplastic, Share the Road
- (56) Sign, Sheet, and Supports, Remove
- (58) Sign, Sheet, Relocate
- (59) Sign, Sheet, Remove & Reset
- (72) Transverse Markings, Thermoplastic, Crosswalk Line, White, 6 in.

DIRECTORY: F:\2015\15-3329 South Bend 2-Way Conversion\DRAWINGS\PAVEMENT MARKING\PM\_South\  
 FILE: 15-3329 PM Main at 4Wg  
 DIMSCALE: 1/8"=1'-0"  
 PLOTTED BY: Ebbesen  
 DATE: 01/15/2016 2:05pm

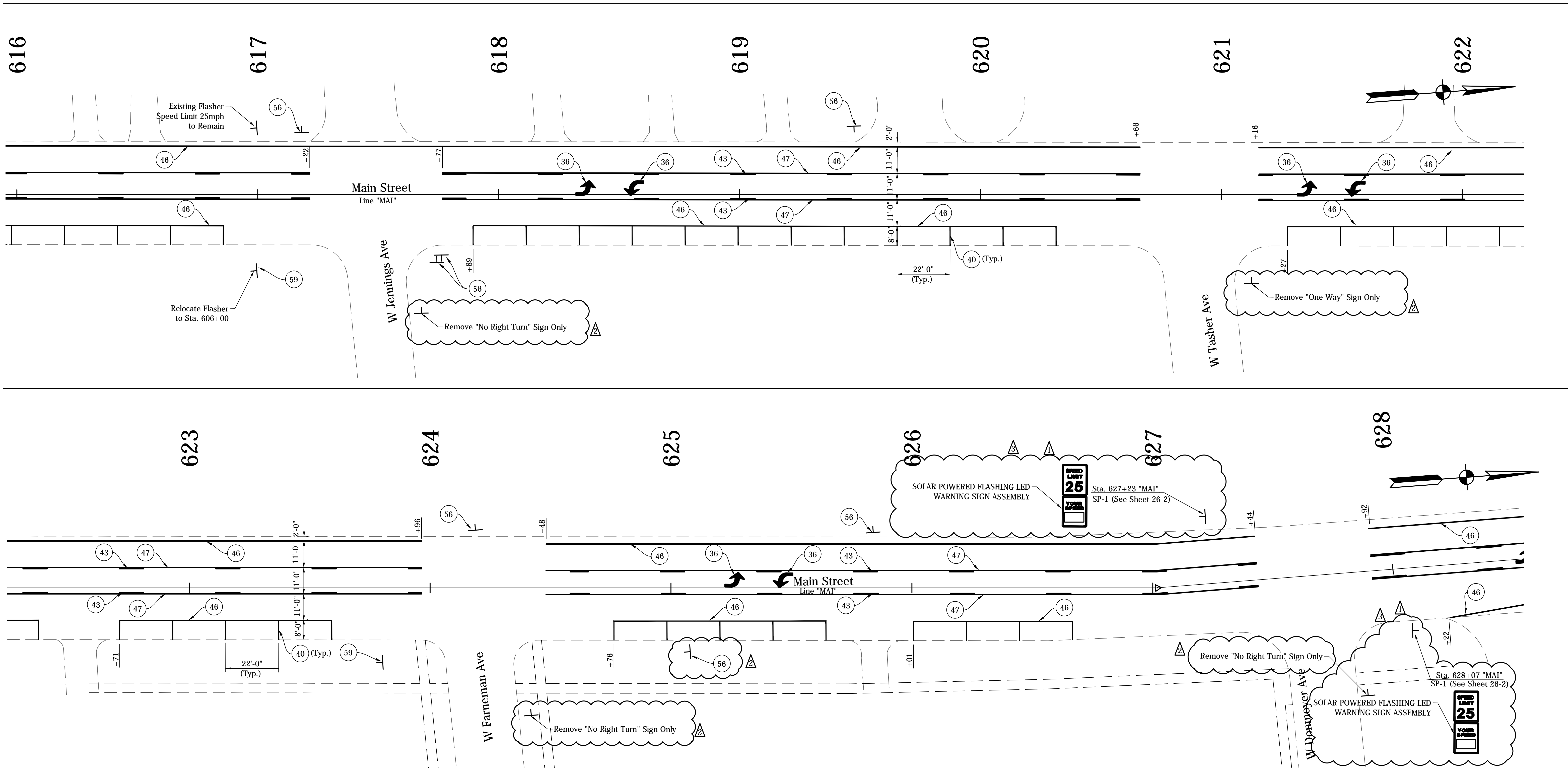
DATE	REVISION
1/15/2016	Rev 1: Revise Legend & Add Signs
1/29/2016	Rev 2: Revise Legend & Add Note to Signs
2/12/2016	Rev 3: Add Signs



RECOMMENDED FOR APPROVAL	<i>Harry Fox</i>	DESIGN ENGINEER	01/07/2016	DATE
DESIGNED:	HCF III	DRAWN:	BRD	
CHECKED:	JG	CHECKED:	JG	

**CITY OF SOUTH BEND**  
**PAVEMENT MARKINGS & SIGNING DETAILS**  
**MAIN STREET**

HORIZONTAL SCALE	BRIDGE FILE
1" = 20'	N/A
VERTICAL SCALE	DESIGNATION
N/A	N/A
SURVEY BOOK	SHEETS
N/A	17 of 27
CONTRACT	PROJECT
N/A	115-019 (DIV A)

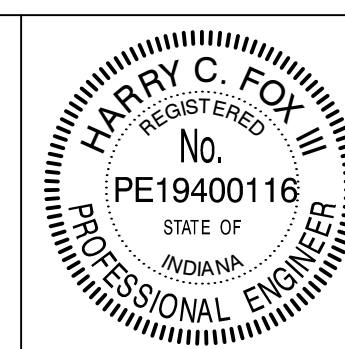


NOTES:  
 See Traffic Signal Detail Sheets For Additional Signage on Signal Poles.  
 Existing Signs to Remain in Place, Unless Otherwise Noted.  
 All Stationing Described from Line "MAI", Except as Noted.

- LEGEND**
- 34 Pavement Message Markings, Thermoplastic, Bike Symbol, 72 in.
  - 35 Pavement Message Markings, Thermoplastic, Arrow, 72 in.
  - 36 Pavement Message Markings, Thermoplastic, Lane Indication Arrow
  - 38 Transverse Markings, Thermoplastic, Stop Line, White, 24 in.
  - 40 Parallel Parking Spaces, See Detail
  - 41 Line, Thermoplastic, Dotted, White, 6 in. (2' Line, 2' Gap)
  - 43 Line, Thermoplastic, Broken, Yellow, 4 in.
  - 45 Line, Thermoplastic, Solid, White, 6 in.
  - 46 Line, Thermoplastic, Solid, White, 4 in.
  - 47 Line, Thermoplastic, Solid, Yellow, 4 in.
  - 55 Pavement Message Markings, Thermoplastic, Share the Road
  - 56 Sign, Sheet, and Supports, Remove
  - 58 Sign, Sheet, Relocate
  - 59 Sign, Sheet, Remove & Reset
  - 72 Transverse Markings, Thermoplastic, Crosswalk Line, White, 6 in.

DIRECTORY: F:\2016\15-1329 South Bend 2-Way Conversion\DRAWINGS\PAVEMENT MARKINGS\PM\_South\  
 FILE: 15-1329 PM Main at 4wy  
 DIMSCALE: 1"=20'  
 PLOTTED BY: Edbauer  
 DATE: 02/15/2016 2:05pm

DATE	REVISION
1/15/2016	Rev 1: Revise Legend & Add Signs
1/29/2016	Rev 2: Revise Legend & Add Note to Signs
2/12/2016	Rev 3: Add Sign

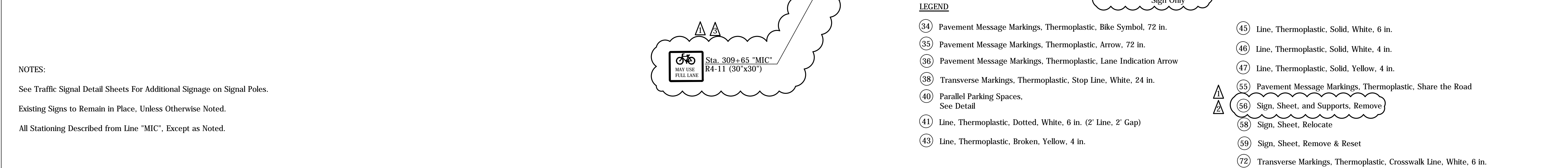
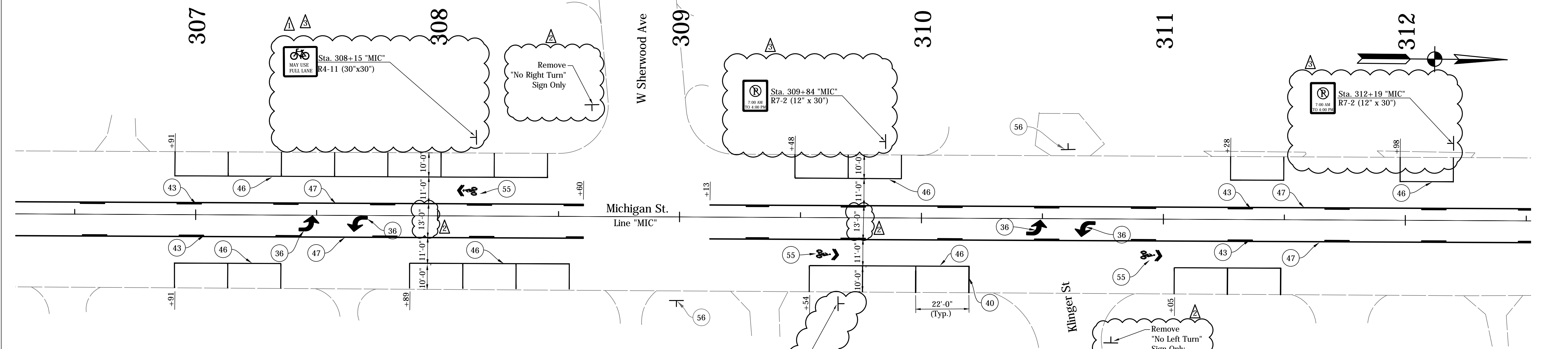


RECOMMENDED FOR APPROVAL	<i>Harry Fox</i>	DESIGN ENGINEER	01/07/2016	DATE
DESIGNED:	HCF III	DRAWN:	BRD	
CHECKED:	JG	CHECKED:	JG	

**CITY OF SOUTH BEND**  
  
**PAVEMENT MARKINGS & SIGNING DETAILS**  
  
**MAIN STREET**

HORIZONTAL SCALE	BRIDGE FILE
1" = 20'	N/A
VERTICAL SCALE	DESIGNATION
N/A	N/A
SURVEY BOOK	SHEETS
N/A	18 of 27
CONTRACT	PROJECT
N/A	115-019 (DIV A)

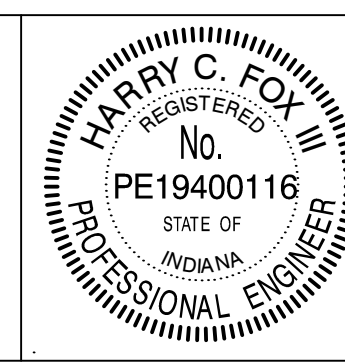
DIRECTORY: F:\2015\15-3329 South Bend 2-Way Conversion\DRAWINGS\PAVEMENT MARKING\PM\_South\  
 FILE: 15-3329 PM Michigan at south.dwg  
 DIMSCALE: 1/8"=1'-0"  
 PLOTTED BY: RBOB  
 DATE: 08/15/2016 2:07pm



**NOTES:**  
 See Traffic Signal Detail Sheets For Additional Signage on Signal Poles.  
 Existing Signs to Remain in Place, Unless Otherwise Noted.  
 All Stationing Described from Line "MIC", Except as Noted.

- LEGEND**
- 34 Pavement Message Markings, Thermoplastic, Bike Symbol, 72 in.
  - 35 Pavement Message Markings, Thermoplastic, Arrow, 72 in.
  - 36 Pavement Message Markings, Thermoplastic, Lane Indication Arrow
  - 38 Transverse Markings, Thermoplastic, Stop Line, White, 24 in.
  - 40 Parallel Parking Spaces, See Detail
  - 41 Line, Thermoplastic, Dotted, White, 6 in. (2' Line, 2' Gap)
  - 43 Line, Thermoplastic, Broken, Yellow, 4 in.
  - 45 Line, Thermoplastic, Solid, White, 6 in.
  - 46 Line, Thermoplastic, Solid, White, 4 in.
  - 47 Line, Thermoplastic, Solid, Yellow, 4 in.
  - 55 Pavement Message Markings, Thermoplastic, Share the Road
  - 56 Sign, Sheet, and Supports, Remove
  - 58 Sign, Sheet, Relocate
  - 59 Sign, Sheet, Remove & Reset
  - 72 Transverse Markings, Thermoplastic, Crosswalk Line, White, 6 in.

DATE	REVISION
1/15/2016	Rev 1: Revise Legend & Add Signs
1/29/2016	Rev 2: Revise Legend & Add Note to Signs & Lane Dimension
2/12/2016	Rev 3: Revise Sign & Add Signs & Bike Lane Symbol

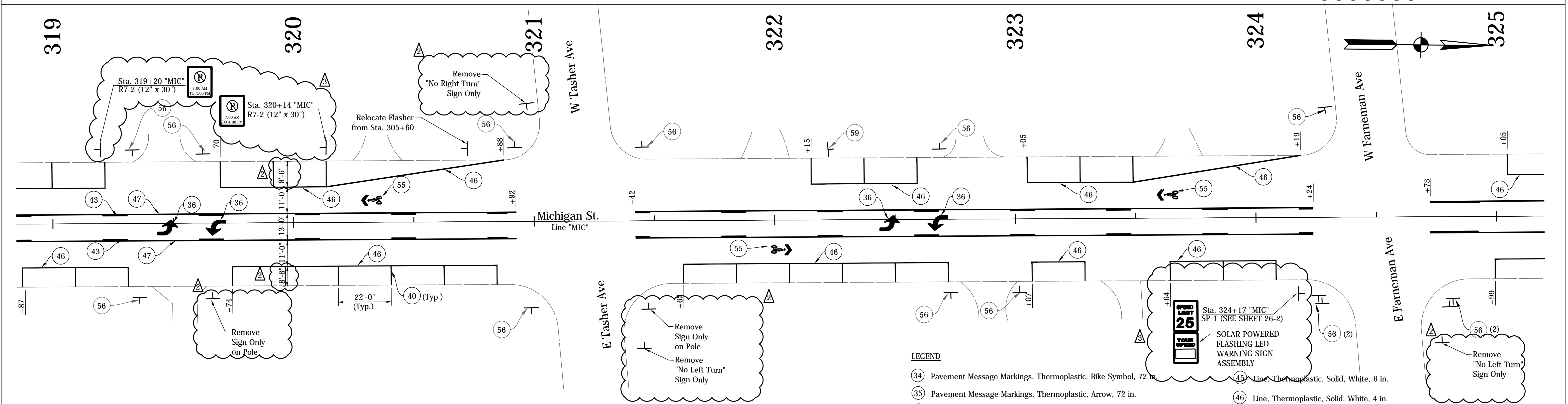
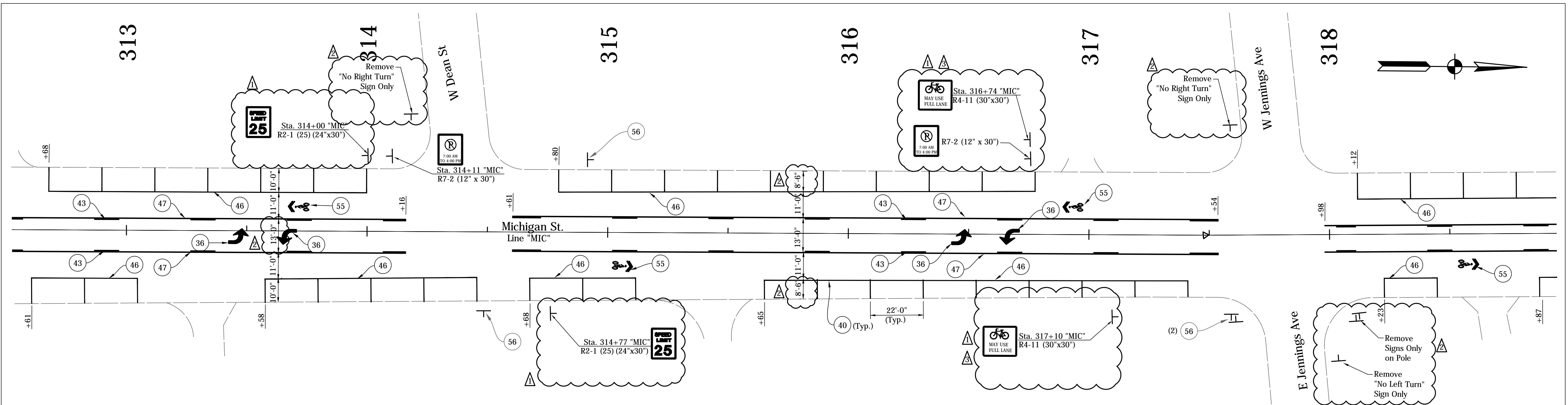


RECOMMENDED FOR APPROVAL	<i>Harry Fox</i>	DESIGN ENGINEER	01/07/2016	DATE
DESIGNED:	HCF III	DRAWN:	BRD	
CHECKED:	JG	CHECKED:	JG	

**CITY OF SOUTH BEND**  
  
**PAVEMENT MARKING & SIGNING DETAILS**  
**MICHIGAN STREET**

HORIZONTAL SCALE	BRIDGE FILE
1" = 20'	N/A
VERTICAL SCALE	DESIGNATION
N/A	N/A
SURVEY BOOK	SHEETS
N/A	22 of 27
CONTRACT	PROJECT
N/A	115-019 (DIV A)

DIRECTORY: F:\2015\15-3329 South Bend 2-Way Conversion\DRAWINGS\PAVEMENT MARKING\PM\_South\  
 FILE: 15-3329 PM Michigan at south.dwg  
 DIMSCALE: 1/8"=1'-0"  
 PLOTTED BY: R0000000000  
 DATE: 08/15/2016 3:07pm



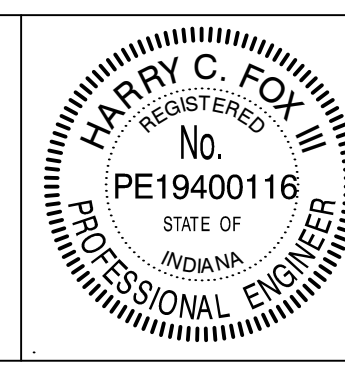
**LEGEND**

- (34) Pavement Message Markings, Thermoplastic, Bike Symbol, 72 in.
- (35) Pavement Message Markings, Thermoplastic, Arrow, 72 in.
- (36) Pavement Message Markings, Thermoplastic, Lane Indication Arrow
- (38) Transverse Markings, Thermoplastic, Stop Line, White, 24 in.
- (40) Parallel Parking Spaces, See Detail
- (41) Line, Thermoplastic, Dotted, White, 6 in. (2' Line, 2' Gap)
- (43) Line, Thermoplastic, Broken, Yellow, 4 in.
- (45) Line, Thermoplastic, Solid, White, 6 in.
- (46) Line, Thermoplastic, Solid, White, 4 in.
- (47) Line, Thermoplastic, Solid, Yellow, 4 in.
- (55) Pavement Message Markings, Thermoplastic, Share the Road
- (56) Sign, Sheet, and Supports, Remove
- (58) Sign, Sheet, Relocate
- (59) Sign, Sheet, Remove & Reset
- (72) Transverse Markings, Thermoplastic, Crosswalk Line, White, 6 in.

**NOTES:**

See Traffic Signal Detail Sheets For Additional Signage on Signal Poles.  
 Existing Signs to Remain in Place, Unless Otherwise Noted.  
 All Stationing Described from Line "MIC", Except as Noted.

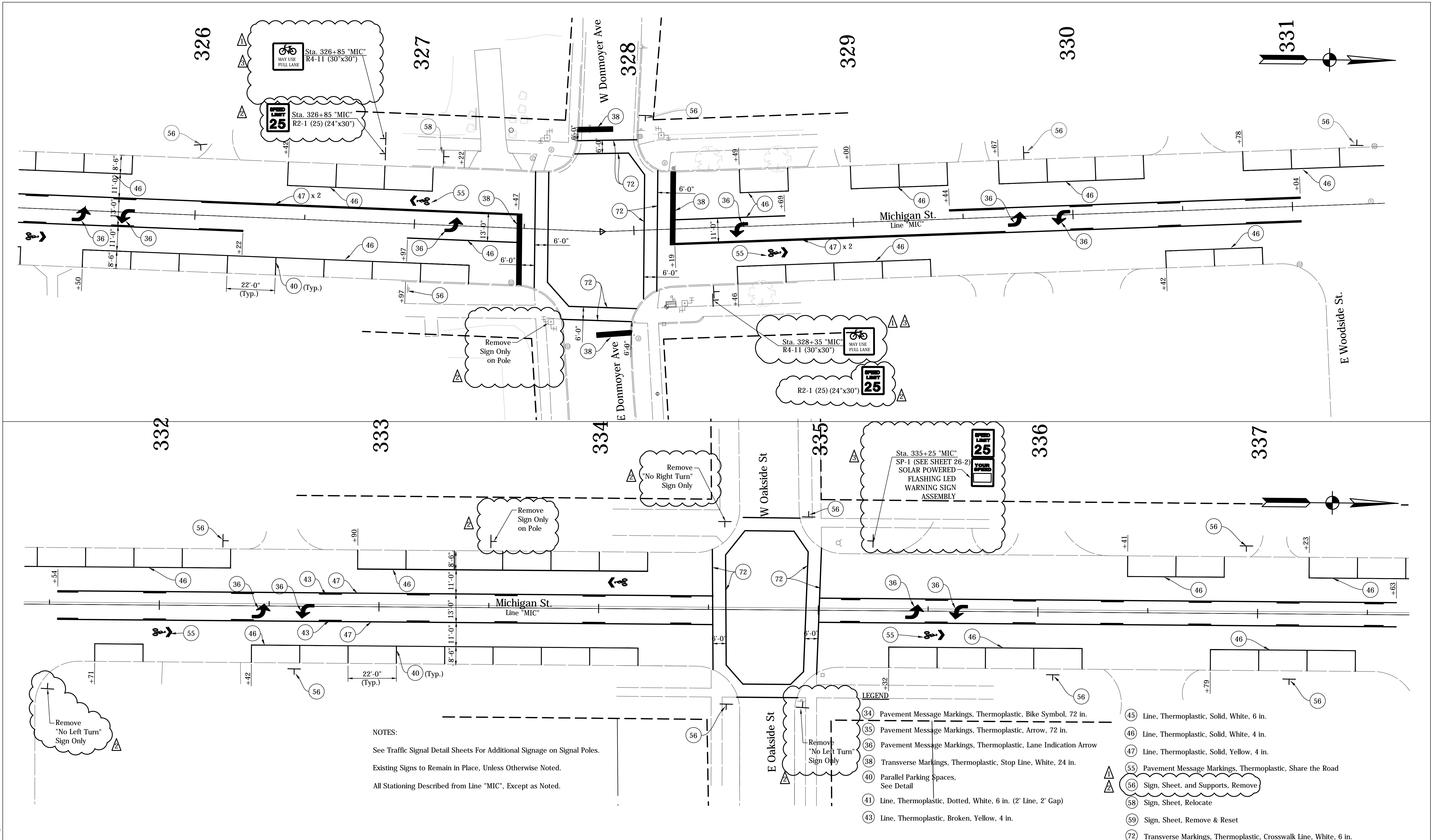
DATE	REVISION
1/15/2016	Rev 1: Revise Legend & Add Signs
1/29/2016	Rev 2: Revise Legend & Add Note to Signs & Lane Dimension
2/12/2016	Rev 3: Revise Sign & Add Sign & Bike Lane Symbol



RECOMMENDED FOR APPROVAL	<i>Harry Fox</i>	DESIGN ENGINEER	01/07/2016	DATE
DESIGNED:	HCF III	DRAWN:	BRD	
CHECKED:	JG	CHECKED:	JG	

**CITY OF SOUTH BEND**  
  
**PAVEMENT MARKING & SIGNING DETAILS**  
**MICHIGAN STREET**

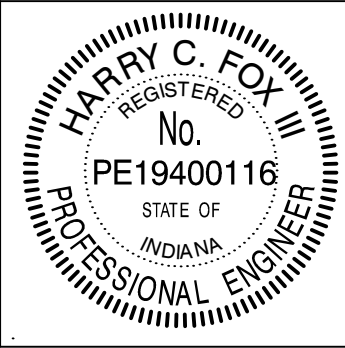
HORIZONTAL SCALE	BRIDGE FILE
1" = 20'	N/A
VERTICAL SCALE	DESIGNATION
N/A	N/A
SURVEY BOOK	SHEETS
N/A	23 of 27
CONTRACT	PROJECT
N/A	115-019 (DIV A)



NOTES:  
 See Traffic Signal Detail Sheets For Additional Signage on Signal Poles.  
 Existing Signs to Remain in Place, Unless Otherwise Noted.  
 All Stationing Described from Line "MIC", Except as Noted.

- LEGEND
- (34) Pavement Message Markings, Thermoplastic, Bike Symbol, 72 in.
  - (35) Pavement Message Markings, Thermoplastic, Arrow, 72 in.
  - (36) Pavement Message Markings, Thermoplastic, Lane Indication Arrow
  - (38) Transverse Markings, Thermoplastic, Stop Line, White, 24 in.
  - (40) Parallel Parking Spaces, See Detail
  - (41) Line, Thermoplastic, Dotted, White, 6 in. (2' Line, 2' Gap)
  - (43) Line, Thermoplastic, Broken, Yellow, 4 in.
  - (45) Line, Thermoplastic, Solid, White, 6 in.
  - (46) Line, Thermoplastic, Solid, White, 4 in.
  - (47) Line, Thermoplastic, Solid, Yellow, 4 in.
  - (55) Pavement Message Markings, Thermoplastic, Share the Road
  - (56) Sign, Sheet, and Supports, Remove
  - (58) Sign, Sheet, Relocate
  - (59) Sign, Sheet, Remove & Reset
  - (72) Transverse Markings, Thermoplastic, Crosswalk Line, White, 6 in.

DATE	REVISION
1/15/2016	Rev 1: Revise Legend & Add Signs
1/29/2016	Rev 2: Revise Legend & Add Note to Signs
2/12/2016	Rev 3: Revise Sign & Bike Lane Symbol

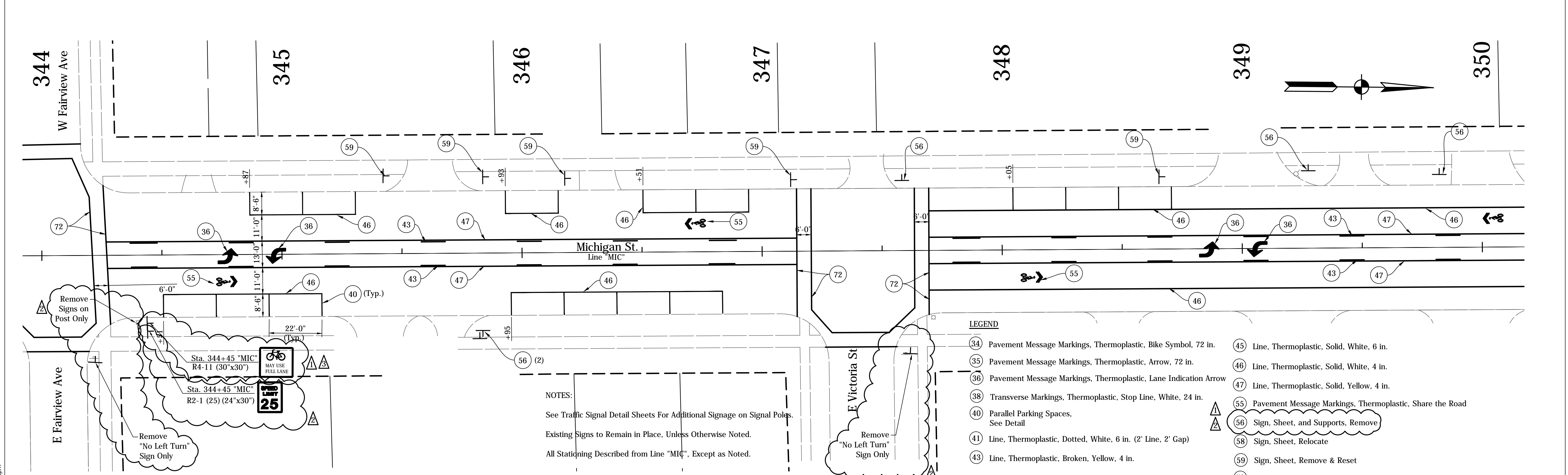
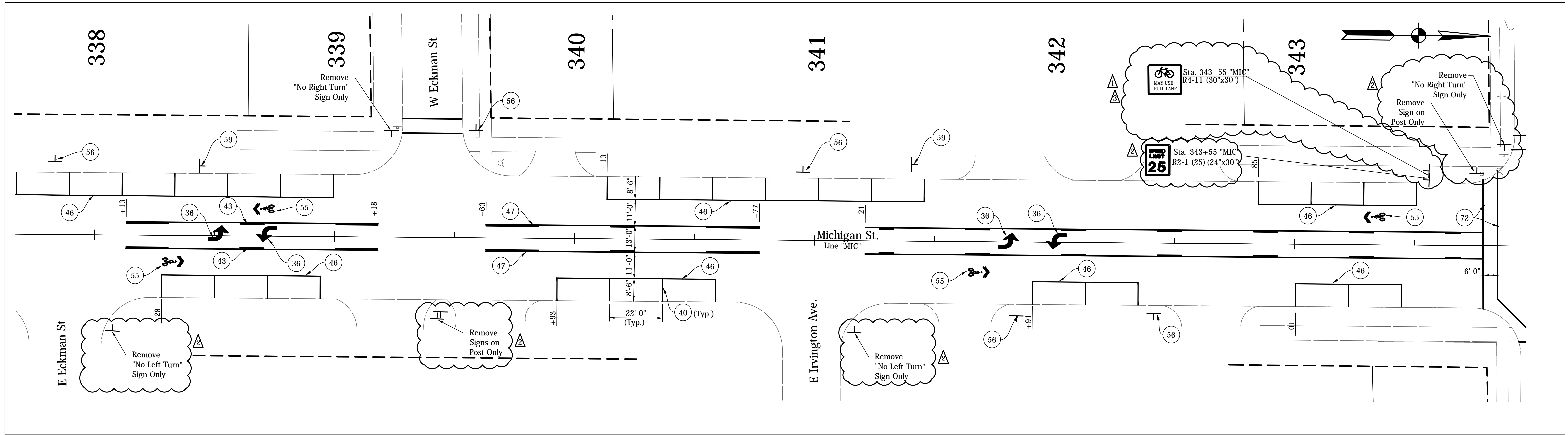


RECOMMENDED FOR APPROVAL	<i>Harry Fox</i>	DESIGN ENGINEER	01/07/2016	DATE
DESIGNED:	HCF III	DRAWN:	BRD	
CHECKED:	JG	CHECKED:	JG	

CITY OF SOUTH BEND  
 PAVEMENT MARKING & SIGNING DETAILS  
 MICHIGAN STREET

HORIZONTAL SCALE	BRIDGE FILE
1" = 20'	N/A
VERTICAL SCALE	DESIGNATION
N/A	N/A
SURVEY BOOK	SHEETS
N/A	24 of 27
CONTRACT	PROJECT
N/A	115-019 (DIV A)

DIRECTORY: F:\2015\15-3329 South Bend 2-Way Conversion\DRAWINGS\PAVEMENT MARKING\PM\_South\  
 FILE: 15-3329 PM Michigan at south.dwg  
 DIMSCALE: 1/8"=1'-0"  
 PLOTTED BY: R0000000  
 DATE: 02/15/2016 3:08pm



**LEGEND**

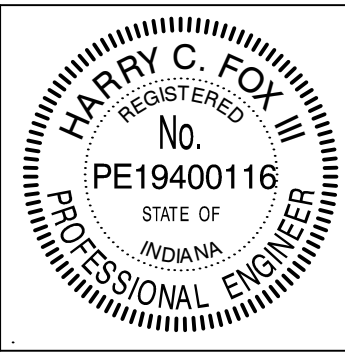
- 34 Pavement Message Markings, Thermoplastic, Bike Symbol, 72 in.
- 35 Pavement Message Markings, Thermoplastic, Arrow, 72 in.
- 36 Pavement Message Markings, Thermoplastic, Lane Indication Arrow
- 38 Transverse Markings, Thermoplastic, Stop Line, White, 24 in.
- 40 Parallel Parking Spaces, See Detail
- 41 Line, Thermoplastic, Dotted, White, 6 in. (2' Line, 2' Gap)
- 43 Line, Thermoplastic, Broken, Yellow, 4 in.
- 45 Line, Thermoplastic, Solid, White, 6 in.
- 46 Line, Thermoplastic, Solid, White, 4 in.
- 47 Line, Thermoplastic, Solid, Yellow, 4 in.
- 55 Pavement Message Markings, Thermoplastic, Share the Road
- 56 Sign, Sheet, and Supports, Remove
- 58 Sign, Sheet, Relocate
- 59 Sign, Sheet, Remove & Reset
- 72 Transverse Markings, Thermoplastic, Crosswalk Line, White, 6 in.

**NOTES:**

See Traffic Signal Detail Sheets For Additional Signage on Signal Poles.  
 Existing Signs to Remain in Place, Unless Otherwise Noted.  
 All Stationing Described from Line "MIC", Except as Noted.

DIRECTORY: F:\2015\15-3329 South Bend 2-Way Conversion\DRAWINGS\PAVEMENT MARKING\PM\_South\  
 FILE: 15-3329 PM Michigan at south.dwg  
 DIMSCALE: 1/8"=1'-0"  
 PLOTTED BY: R. B. ...  
 DATE: 02/15/2016 2:08pm

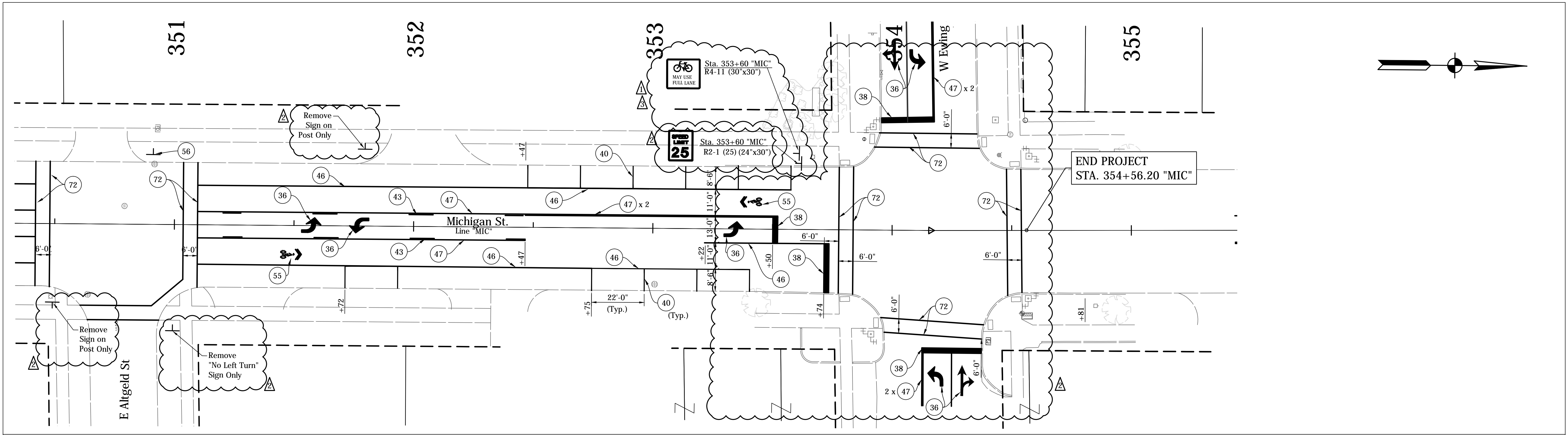
DATE	REVISION
1/15/2016	Rev 1: Revise Legend & Add Signs
1/29/2016	Rev 2: Revise Legend & Add Note to Signs
2/12/2016	Rev 3: Revise Sign & Bike Lane Symbol



RECOMMENDED FOR APPROVAL	<i>Harry Fox</i>	DESIGN ENGINEER	01/07/2016	DATE
DESIGNED:	HCF III	DRAWN:	BRD	
CHECKED:	JG	CHECKED:	JG	

**CITY OF SOUTH BEND**  
  
**PAVEMENT MARKING & SIGNING DETAILS**  
**MICHIGAN STREET**

HORIZONTAL SCALE	BRIDGE FILE
1" = 20'	N/A
VERTICAL SCALE	DESIGNATION
N/A	N/A
SURVEY BOOK	SHEETS
N/A	25 of 27
CONTRACT	PROJECT
N/A	115-019 (DIV A)



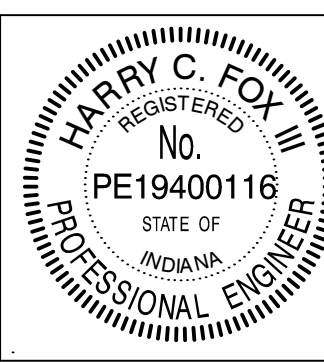
**NOTES:**  
 See Traffic Signal Detail Sheets For Additional Signage on Signal Poles.  
 Existing Signs to Remain in Place, Unless Otherwise Noted.  
 All Stationing Described from Line "MIC", Except as Noted.

LEGEND

- (34) Pavement Message Markings, Thermoplastic, Bike Symbol, 72 in.
- (35) Pavement Message Markings, Thermoplastic, Arrow, 72 in.
- (36) Pavement Message Markings, Thermoplastic, Lane Indication Arrow
- (38) Transverse Markings, Thermoplastic, Stop Line, White, 24 in.
- (40) Parallel Parking Spaces, See Detail
- (41) Line, Thermoplastic, Dotted, White, 6 in. (2' Line, 2' Gap)
- (43) Line, Thermoplastic, Broken, Yellow, 4 in.
- (45) Line, Thermoplastic, Solid, White, 6 in.
- (46) Line, Thermoplastic, Solid, White, 4 in.
- (47) Line, Thermoplastic, Solid, Yellow, 4 in.
- (53) Pavement Message Markings, Thermoplastic, Share the Road
- (56) Sign, Sheet, and Supports, Remove
- (58) Sign, Sheet, Relocate
- (59) Sign, Sheet, Remove & Reset
- (72) Transverse Markings, Thermoplastic, Crosswalk Line, White, 6 in.

DIRECTORY: F:\2015\15-3329 South Bend 2-Way Conversion\DRAWINGS\PAVEMENT MARKING\PM South\  
 FILE: 15-3329 PM Michigan at south.dwg  
 DIMSCALE: 1/8"=1'-0"  
 PLOTTED BY: R000000000  
 DATE: 02/15/2016 2:08pm

DATE	REVISION
1/15/2016	Rev 1: Revise Legend & Add Signs
1/29/2016	Rev 2: Revise Legend & Add Note to Signs & Pavement Labels and Remove Sign
2/12/2016	Rev 3: Revise Sign & Bike Lane Symbol



RECOMMENDED FOR APPROVAL	<i>Harry Fox</i>	DESIGN ENGINEER	01/07/2016	DATE
DESIGNED:	HCF III	DRAWN:	BRD	
CHECKED:	JG	CHECKED:	JG	

**CITY OF SOUTH BEND**  
  
**PAVEMENT MARKING & SIGNING DETAILS**  
**MICHIGAN STREET**

HORIZONTAL SCALE	BRIDGE FILE
1" = 20'	N/A
VERTICAL SCALE	DESIGNATION
N/A	N/A
SURVEY BOOK	SHEETS
N/A	26 of 27
CONTRACT	PROJECT
N/A	115-019 (DIV A)

SHEET SIGN & POST SUMMARY

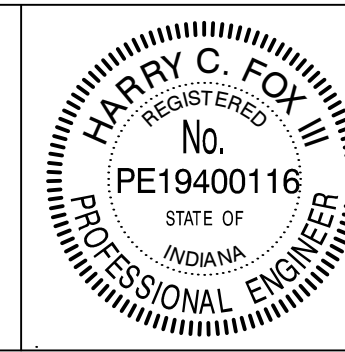
LINE	SIGN LOCATION	SIGN CODE	SIGN SIZE (IN x IN)	GROUND - MOUNTED SIGN AREA (SFT)			SQUARE				
				0.080"	0.100"	0.125"	2" x 2" - 12 GA. (TYPE 2) REINFORCED ANCHOR		2 1/4" x 2 1/4" - 12 GA. (TYPE 1) REINFORCED ANCHOR		
							1	2	TOTAL	1	2
MAI	603+55	R2-1 (25)	24 x 30	5.0					9.5	9.5	
MAI	604+05	W9-2(L)	36 x 36		9.0				10	10	
MAI	604+90	W4-2(L)	36 x 36		9.0				12.5	12.5	
MAI	606+47	R7-2	12 x 30	2.5					9.5	9.5	
MAI	608+31	R1-1	30 x 30	6.3					9.5	9.5	
MAI	609+30	R7-2	12 x 30	2.5					9.5	9.5	
MAI	612+61	R7-2	12 x 30	2.5					9.5	9.5	
MAI	627+23	SP-1									
MAI	628+07	SP-1									
MAI	653+04	R2-1 (25)	24 x 30	5.0					9.5	9.5	
MAI	653+30	R3-7	30 x 30	6.3					9.5	9.5	
MAI		R3-1	36 x 36		9.0					MAST ARM AT EWING	
MAI		R3-2	36 x 36		9.0					MAST ARM AT EWING	
MAI		R5-1	36 x 36		9.0					MAST ARM AT EWING	
MIC	308+15	R4-11	30 x 30	6.3					9.5	9.5	
MIC	309+65	R4-11	30 x 30	6.3					9.5	9.5	
MIC	309+84	R7-2	12 x 30	2.5					9.5	9.5	
MIC	312+19	R7-2	12 x 30	2.5					9.5	9.5	
MIC	314+00	R2-1 (25)	24 x 30	5.0					9.5	9.5	
MIC	314+11	R7-2	12 x 30	2.5					9.5	9.5	
MIC	314+77	R2-1 (25)	24 x 30	5.0					9.5	9.5	
MIC	316+74	R4-11	30 x 30	6.3					9.5	9.5	
MIC	316+74	R7-2	12 x 30	2.5					9.5	9.5	
MIC	317+10	R4-11	30 x 30	6.3					9.5	9.5	
MIC	319+20	R7-2	12 x 30	2.5					9.5	9.5	
MIC	320+14	R7-2	12 x 30	2.5					9.5	9.5	
MIC	324+17	SP-1									
MIC	326+85	R2-1 (25)	24 x 30	5.0					9.5	9.5	
MIC	326+85	R4-11	30 x 30	6.3					9.5	9.5	
MIC	328+35	R2-1 (25)	24 x 30	5.0					9.5	9.5	
MIC	328+35	R4-11	30 x 30	6.3					9.5	9.5	
MIC	335+20	SP-1									
MIC	343+55	R2-1 (25)	24 x 30	5.0					9.5	9.5	
MIC	343+55	R4-11	30 x 30	6.3					9.5	9.5	
MIC	344+45	R2-1 (25)	24 x 30	5.0					9.5	9.5	
MIC	344+45	R4-11	30 x 30	6.3					9.5	9.5	
SUBTOTALS				125.5	45.0				279.0		

SHEET SIGN & POST SUMMARY

LINE	SIGN LOCATION	SIGN CODE	SIGN SIZE (IN x IN)	GROUND - MOUNTED SIGN AREA (SFT)			SQUARE				
				0.080"	0.100"	0.125"	2" x 2" - 12 GA. (TYPE 2) REINFORCED ANCHOR		2 1/4" x 2 1/4" - 12 GA. (TYPE 1) REINFORCED ANCHOR		
							1	2	TOTAL	1	2
MIC	353+60	R4-11	30 x 30	6.3					9.5	9.5	
MIC	353+60	R2-1 (25)	24 x 30	5.0					9.5	9.5	
MIC		R3-1	36 x 36		9.0					MAST ARM AT EWING	
MIC		R3-2	36 x 36		9.0					MAST ARM AT EWING	
MIC		R5-1	36 x 36		9.0					MAST ARM AT EWING	
SUBTOTALS				11.3	27.0				19.0		
TOTALS				136.8	72.0				298.0		

DIRECTORY: F:\2015\15-3229 South Bend 2 Way Conversion\DRAWINGS\TABLES  
 FILE: 15-3229 Sign sheet.dwg  
 PLOTTED BY: R. J. ...  
 DATE: 01/15/2016 3:11pm  
 DWS: 1  
 LSCALE: 1  
 DATE: 01/15/2016 3:11pm

DATE	REVISION
1/29/2016	Rev 2: Add Sheet
2/12/2016	Rev 3: Add Signs

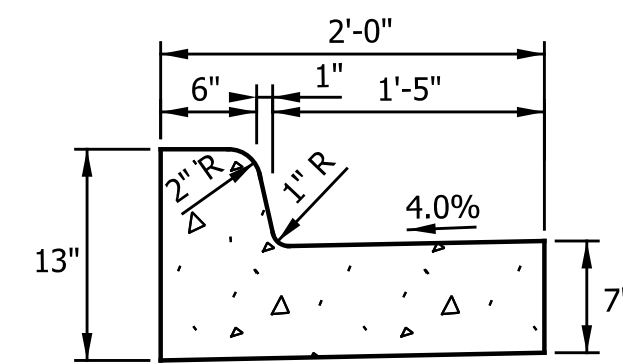


RECOMMENDED FOR APPROVAL: *Harry Fox* DESIGN ENGINEER 01/07/2016 DATE  
 DESIGNED: HCF III DRAWN: BRD  
 CHECKED: JG CHECKED: JG

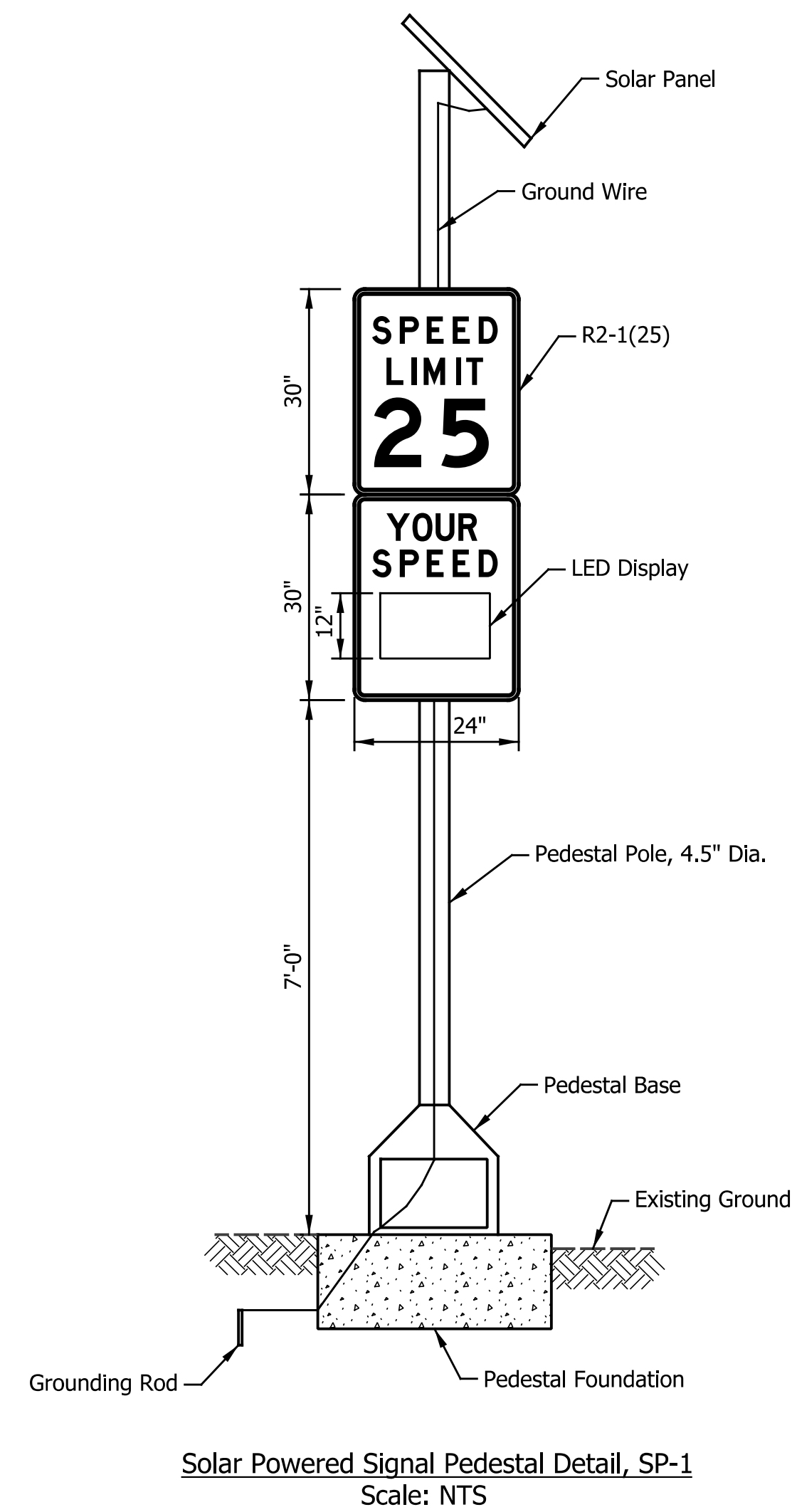
CITY OF SOUTH BEND  
 SHEET SIGN & POST SUMMARY

HORIZONTAL SCALE	BRIDGE FILE
VERTICAL SCALE	DESIGNATION
SURVEY BOOK	SHEETS
N/A	26-1 of 27
CONTRACT	PROJECT
N/A	115-019 (DIV A)



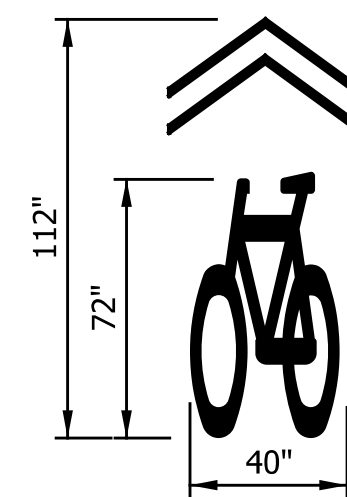


Combined Concrete Curb & Gutter, Type B

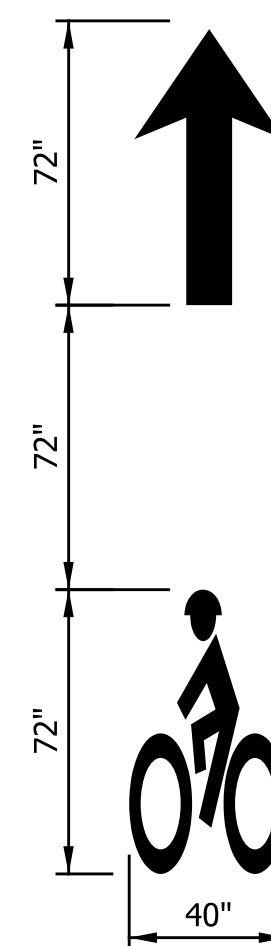


GENERAL NOTES

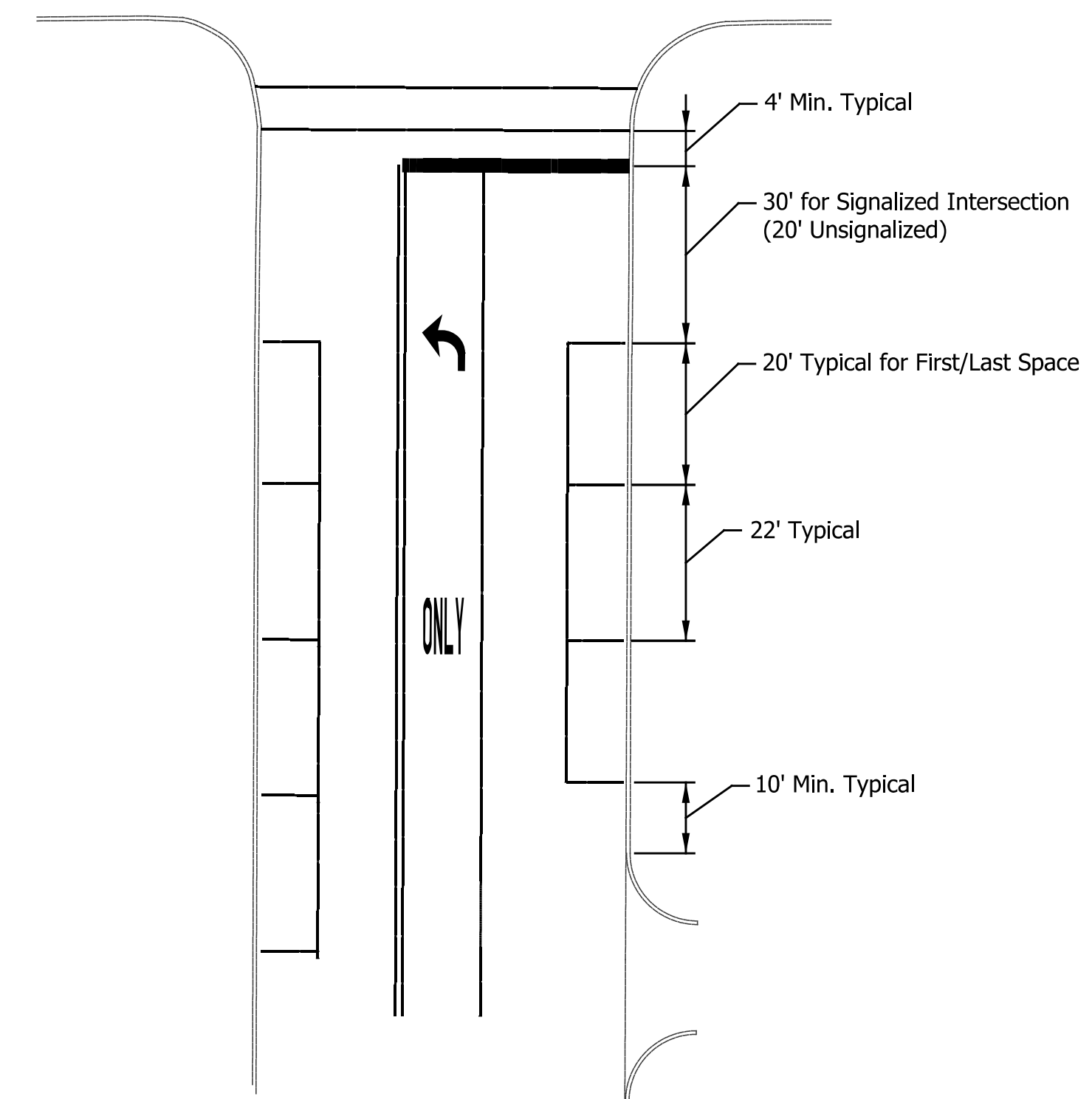
1. All signs shall conform to the Indiana Manual on Uniform Traffic Control Devices (MUTCD) for streets and Highways, latest edition.
2. All sign details are from Indiana MUTCD, latest edition.
3. In areas where lateral offsets are limited, a minimum lateral offset of 2 feet may be used.
4. Street ID signs which are currently mounted on utility poles shall be removed and reset on a new sign post.
5. All temporary traffic control shall be in accordance with the Indiana MUTCD.
6. For standard signs not detailed, refer to Indiana MUTCD, latest edition.
7. Pedestal base and pole for SP-1 shall be black powder coated.



Pavement Message Marking, Share the Road  
Scale: NTS



Pavement Message Marking, Bike Lane  
Scale: NTS



PARALLEL PARKING SPACE DETAIL

DATE	REVISION
2/12/2016	REV 3: Added Sheet

RECOMMENDED FOR APPROVAL	<i>Patrick Warden</i> DESIGN ENGINEER	2/12/2016 DATE
DESIGNED: MRR	DRAWN: JRG	
CHECKED: PKW	CHECKED: PKW	

CITY OF SOUTH BEND	
MISCELLANEOUS DETAILS	

HORIZONTAL SCALE	BRIDGE FILE
N/A	N/A
VERTICAL SCALE	DESIGNATION
N/A	N/A
SURVEY BOOK	SHEETS
N/A	26-2 of 27
CONTRACT	PROJECT
N/A	115-019 (DIV A)

I:\info\p1401351\3\mddetail


**SUMMARY OF QUANTITIES AND APPROACH TABLE**

LOCATION (STATION)	DESCRIPTION (APPROACH TYPE OR CLASS)	WIDTH	LENGTH	RADI DISTANCE BEYOND R/W LINE	SURFACE BEYOND R/W LINE			EXCAVATION	PCCP MATERIALS			HMA MATERIALS					PERMEABLE PAVEMENT	MILLING ASPHALT, 1.5"	MILLING ASPHALT, 2.5"	MILLING ASPHALT, 3.5"	MILLING ASPHALT, 4.5"	MILLING ASPHALT, VARIABLE DEPTH	6" PCCP APPROACH	8" PCCP APPROACH	JOINT ADHESIVE, SURFACE	LIQUID ASPHALT SEALANT	ASPHALT FOR TACK COAT	6" COMPACTED AGGREGATE FOR BASE NO. 53	D-1 CONTRACTION JOINT	STONE, NO. 8	REMARKS					
					COMPACTED AGGREGATE BASE	HMA	CONCRETE		QC/QA PCCP	PLAIN PCCP, COLORED	PLAIN PCCP	QC/QA-HMA, 2- 70, SURFACE 9.5mm	QC/QA-HMA, 4- 76, SURFACE 9.5mm	QC/QA-HMA, 2- 70, INTER. 19.0mm	QC/QA-HMA, 2- 64, BASE 19.0mm	WIDENING WITH HMA, TYPE D																LBS. PER SYD.				
																																CYS.	10 IN	10 IN	4 IN	165
					CUT	FILL	SYS		SYS	SYS	TON	TON	TON	TON	TON	SYS.																SYS.	SYS.	SYS.	SYS.	SYS.
Line "MAI" 603+49.32 to 654+28.65	Mainline	48.0	5,079																												See Special Provisions <sup>3</sup>					
Line "MIC" 305+34.45 to 354+56.20	Mainline	52.0	4,922																											See Special Provisions						
TOTALS																																				

DATE	REVISION
1/15/2016	REV 1: Added Sheet
2/12/2016	REV 3: Mill & Resurface Added as Alternate Work

ALTERNATE WORK ITEMS  
MILLING & RESURFACING <sup>3</sup>

(M) (R) 603+49.32 to 654+28.65 "MAI"  
(M) (R) 305+34.45 to 354+56.20 "MIC"

RECOMMENDED FOR APPROVAL:  DESIGN ENGINEER DATE: 1/15/2016

DESIGNED: MRR DRAWN: JRG  
CHECKED: PKW CHECKED: PKW

CITY OF SOUTH BEND

**SUMMARY OF QUANTITIES  
AND APPROACH TABLE**

HORIZONTAL SCALE	BRIDGE FILE
N/A	N/A
VERTICAL SCALE	DESIGNATION
N/A	N/A
SURVEY BOOK	SHEETS
N/A	27-1 of 27
CONTRACT	PROJECT
N/A	115-019 (DIV A)

I:\04\1351\3\1351\_01.dwg