

Public Utility

The existing utilities listed below and shown on these plans represent the best information available as obtained on our surveys. This information does not relieve the contractor of the responsibility to be satisfied as to its accuracy and the location of existing utilities.

Name of Owner

Kind of Utility

NIPSCO
801 East 86th Ave
Merrillville, Indiana 46410
Phone: (574) 284-2214
Cell: (574) 220-3804
pmgriffin@nisource.com
Phil Griffin

Gas

AT & T
307 S. Main St.
South Bend, Indiana 46601-2205
Phone: (574) 257-8380
db2741att.com
Dennis Bunch

Telephone

City of South Bend - Sanitary Sewer
1316 County-City Building
South Bend, Indiana 46601
Phone: (574) 255-9251
tmolnar@southbendin.gov
Tony Molnar

Sewer

South Bend Water Works
830 N. Michigan St.
South Bend, Indiana 46601
Phone: (574) 245-6108
eherman@southbendin.gov
Ed Herman

Water

St. Joseph Valley Metronet
130 S. Main St., Suite 275
South Bend, Indiana 46601
Phone: (574) 968-5342
bhudson@metronetzing.org
Ben Hudson

Fiber Optic Telecommunications

Comcast North
1920 McKinley Ave.
Mishawaka, Indiana 46545
Phone: (847) 789-1039 Ext. 71039
jay-castello@cable.comcast.com
Jay Castello

Telecommunications

AEP Distribution
2929 West Lathrop Street
South Bend, Indiana 46628
Phone: (574) 236-1653
rjstrasburg@aep.com
Bob Strasburg

Electric



General Notes:

- All elevations referenced to NAVAD 1988 using NGS benchmark stamped "F 20 1934" El.=737.37. NGS disk is located in the northeast corner of the bridge over Lafayette Ave. on the New York Central RR.
- All items shown are existing unless otherwise indicated as required.
- Locations and elevations shown for existing utilities are approximate. The contractor shall have all utilities located prior to beginning work, including the St. Joseph Valley Metronet. Contractor shall expose all existing utilities well in advance of crossing with new water main, sanitary sewer and storm sewer installation to allow for grade adjustment at no additional cost. If required after field verification, adjust alignment and grade of new pipeline as directed by engineer.
- Any damage to access roads, bridges, private or public property, and to existing structure not specified to be altered and caused by the contractor during construction shall be repaired at the expense of the contractor.
- If any errors become apparent, they shall be brought to the attention of the engineer prior to construction so that clarification or redesign may occur.
- The latest edition of the City of South Bend, Indiana specifications and standard details, and INDOT specifications and standard details are to be used with these plans.
- Driveways and street approaches in areas of cut or fill greater than 1' must be maintained with slopes not exceeding 15%.

REVISIONS

SHEET NO.	DATE	REVISION
2	1/12/2016	Added revision table
4, 5	1/12/2016	Revised typical section
30, 32, 39, 55, 57,	1/12/2016	Revised curb location
35	1/12/2016	Added note to salvage signal equipment
37	1/12/2016	Revised curb location & added Metronet relocation
43, 45	1/12/2016	Revised spot elevations & curb location
46	1/12/2016	Revised spot elevations
48	1/12/2016	Revised alignments
49	1/12/2016	Revised spot elevations
50	1/12/2016	Revised jointing layout
51-52	1/12/2016	Revised water main details
62	1/12/2016	Revised signal plan
63-64, 66, 68	1/12/2016	Revised lighting legend & wiring for bollards
65, 67	1/12/2016	Revised lighting legend & wiring for bollards & revised curb location
69	1/12/2016	Revised lighting tables
70	1/12/2016	Revised detail title
79	1/12/2016	Revised approach table
82-83	1/12/2016	Revised structure data table
92-93, 97-99, 102, 106	1/12/2016	Revised cross sections
2	1/26/2016	Revised revision table
9	1/26/2016	Cross walk system details added as alternate work items
28	1/26/2016	Revised earthwork table, roundabout center island fill added.
50	1/26/2016	Deleted "saw cut joint detail"
65	1/26/2016	Cross walk system details added as alternate work item
70	1/26/2016	Revised "tesco cabinet wiring schematic". Added "cross walk one line diagram"
71	1/25/2016	Earthwork Calculations

INDEX

SHEET NO.	DRAWING INDEX
1	Title Sheet
2	Index and General Notes
3-8	Typical Sections
9	Miscellaneous Details
10-11	Plat No. 1
12	Geometric Tie-In Details
13	Survey Control
14-27	Maintenance of Traffic
28-34	Plan & Profile
35-40	Construction Details
41-46	Intersection Details
47	Curb Ramp Details
48	Roundabout Geometric Details
49	Roundabout Grading Plan
50	Roundabout Jointing Plan
51-52	Water Main Relocation Details
53-58	Signing and Pavement Marking Plan
59-61	Sheet Sign and Post Summary
62	Signal Plan
63-68	Lighting Details
69-70	Lighting Miscellaneous Details
71-73	Landscaping Layout
74-76	Landscaping Details
77-78	Irrigation Details
79	Summary of Quantities and Approach Table
80	Miscellaneous Tables
81-84	Structure Data Table
85-107	Cross Sections

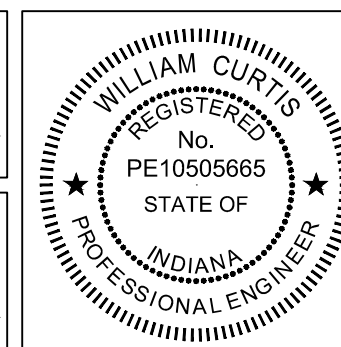
BILLC - 1/27/2016 4:10 PM - P:\C3D\14-416\Road\Dwg\Plans\Index & General Notes.dwg



1625 N. Post Road
Indianapolis, IN 46219
Phone 317-895-2585
Fax 317-895-2596
www.ucindy.com

- Added revision table
- Revised revision table

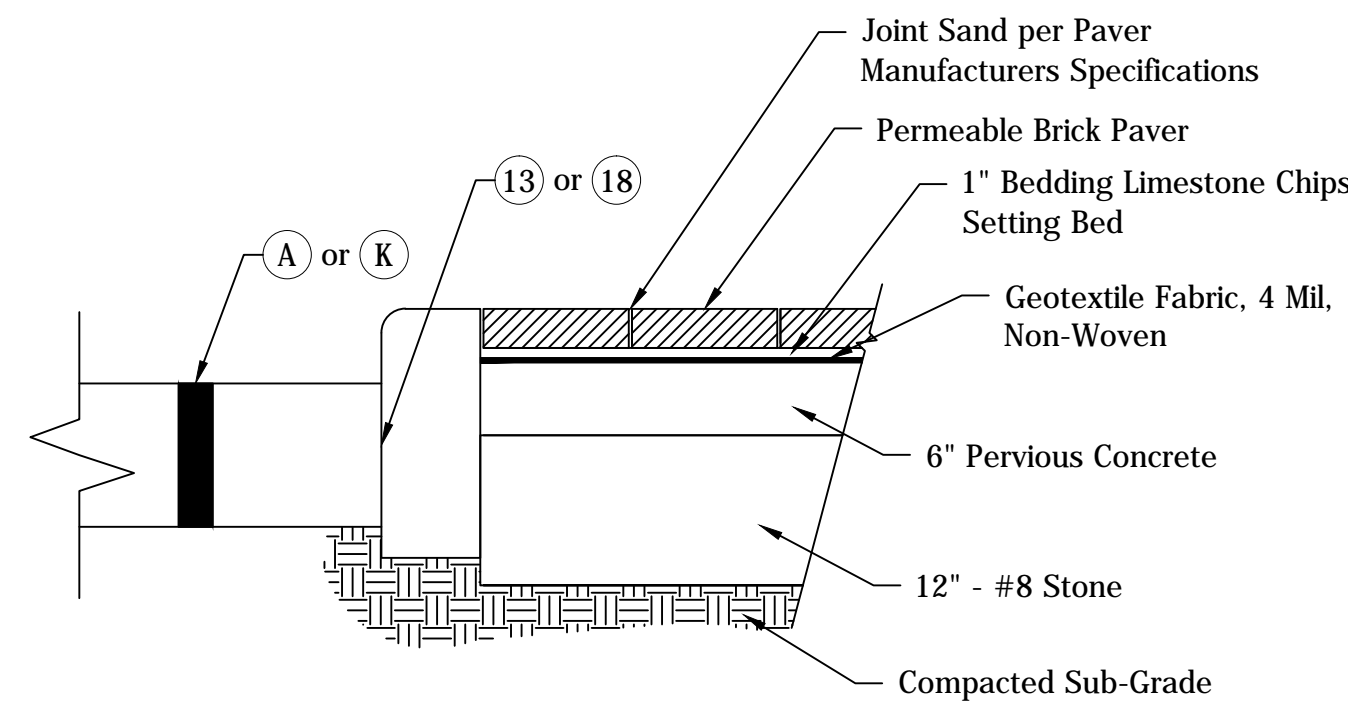
William Curtis
SIGNATURE DATE



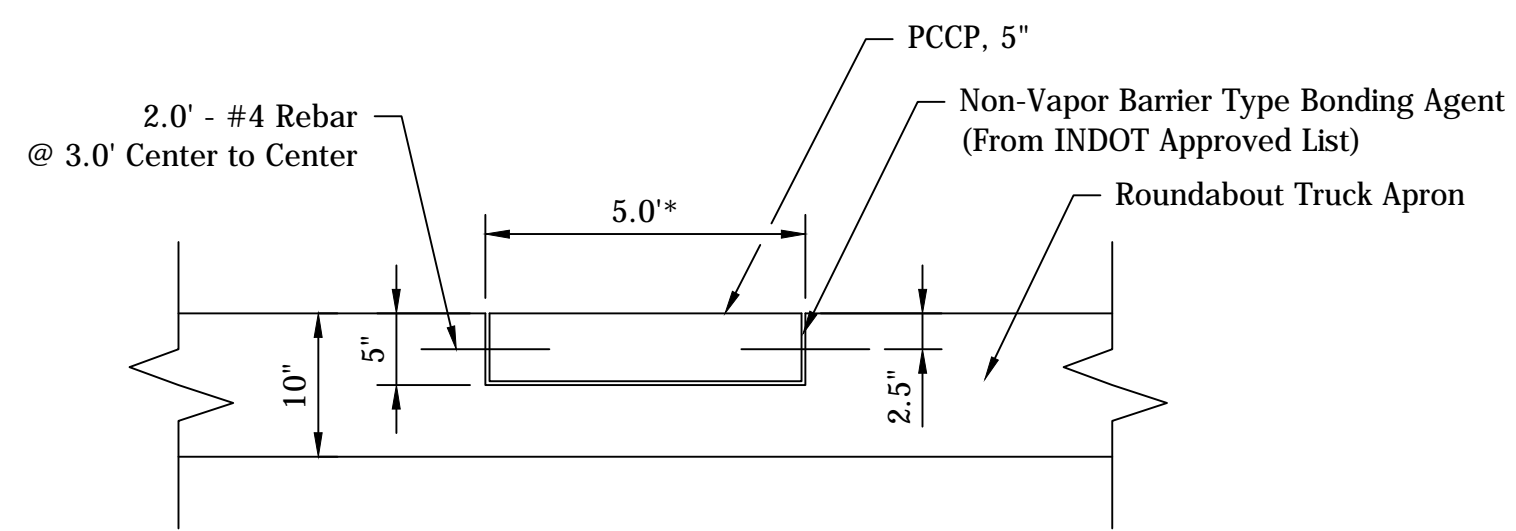
CITY OF SOUTH BEND, INDIANA
ROUNDABOUT INTERSECTION AT
MARION, MICHIGAN, & MAIN STREETS

INDEX AND GENERAL NOTES

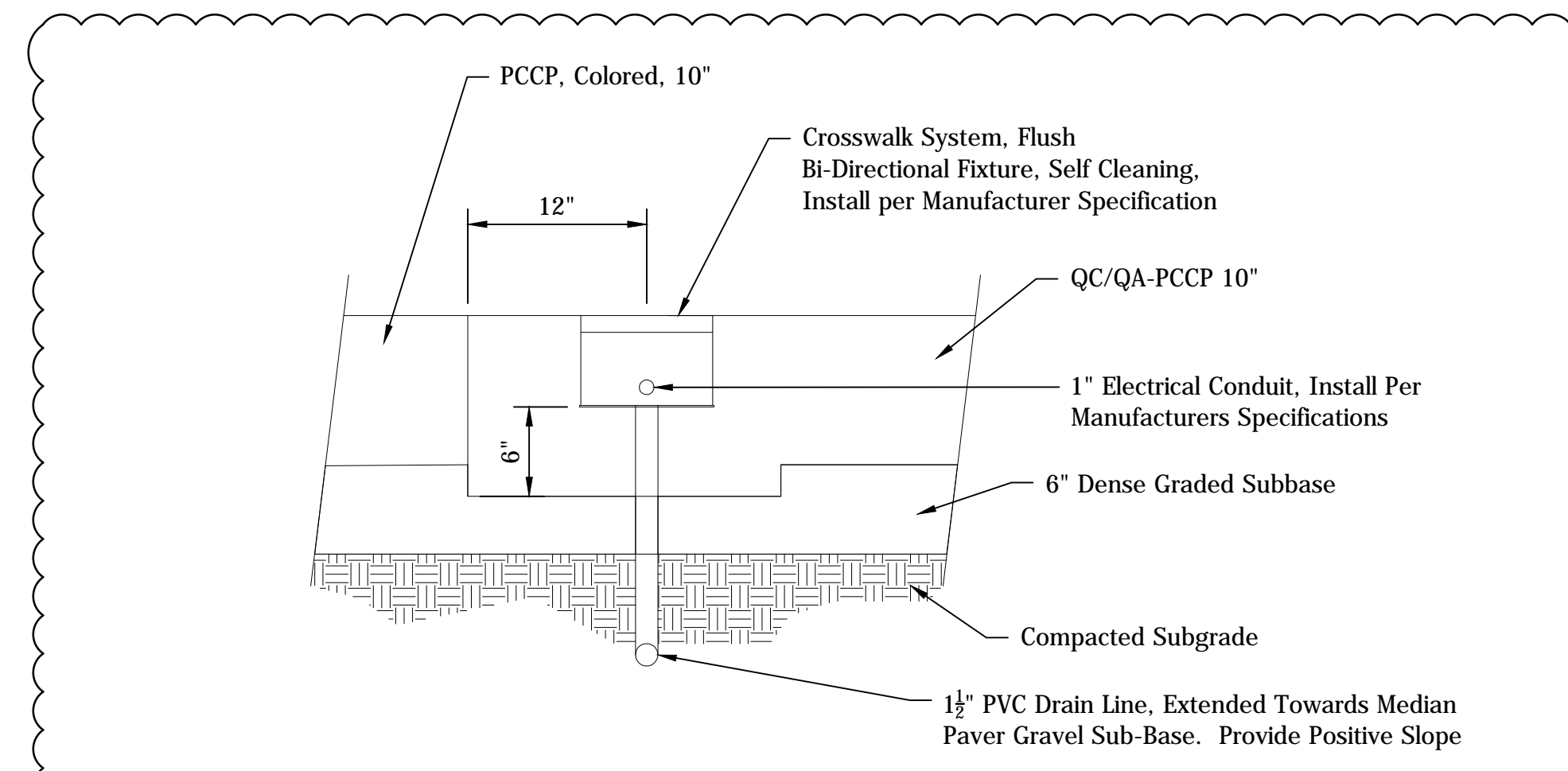
REVISIONS	HORIZONTAL SCALE N/A	PROJECT NUMBER 114-035
	VERTICAL SCALE N/A	
DRAWN: JNII	SURVEY BOOK -	SHEETS
CHECKED: WRC	DATE / /	2 OF 107



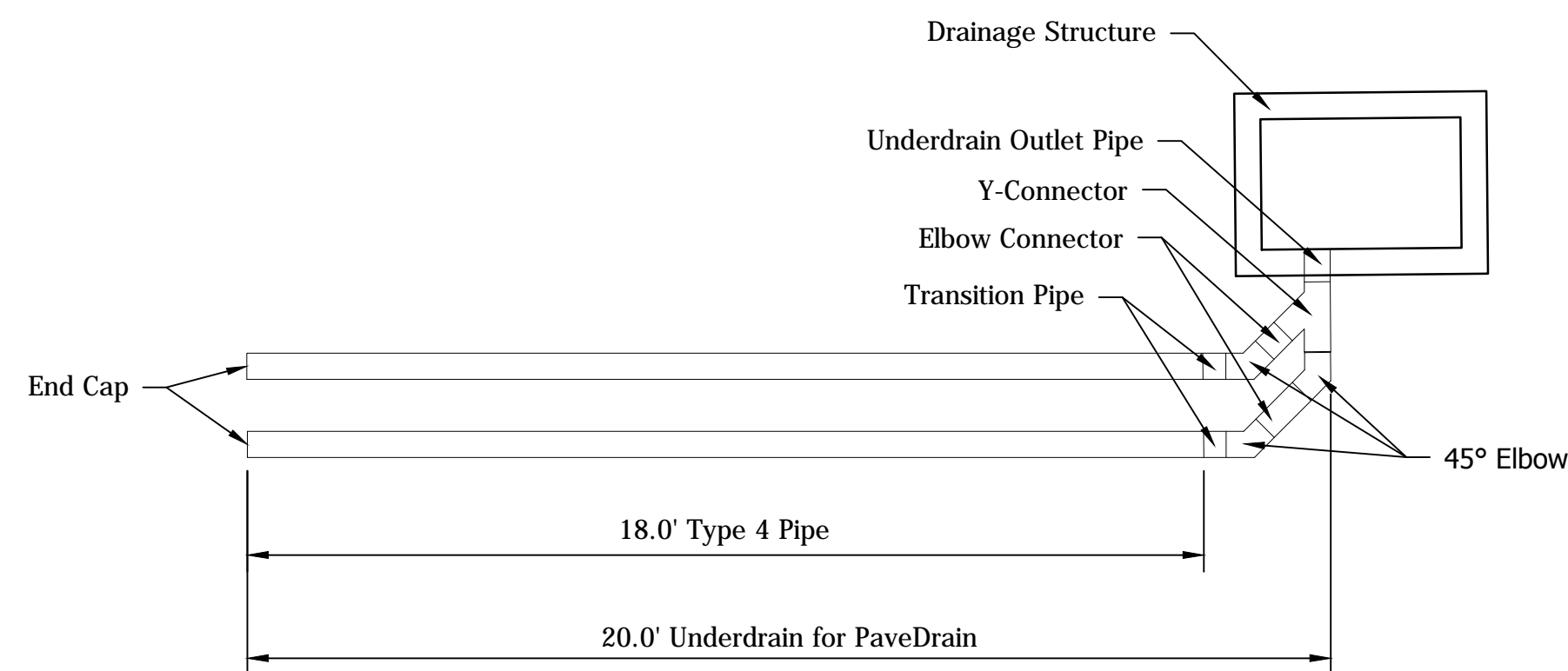
BRICK PAVERS
NOT TO SCALE



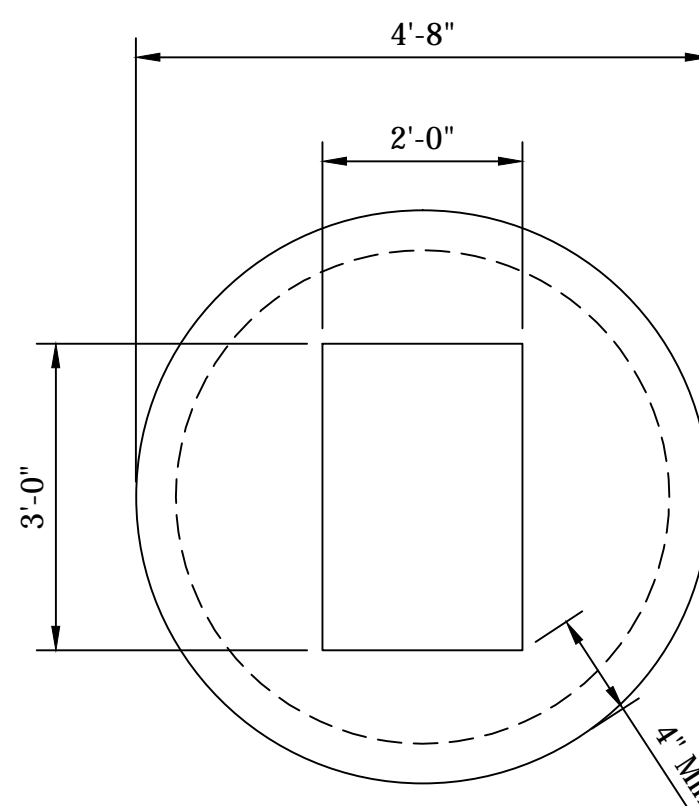
CONCRETE INLAY FOR ROUNDABOUT TRUCK APRON
NOT TO SCALE
* Concrete Inlay Locations as shown on the Construction Details



FLUSH BI-DIRECTIONAL LIGHT FIXTURE DETAIL
(SECTION VIEW)
NOT TO SCALE

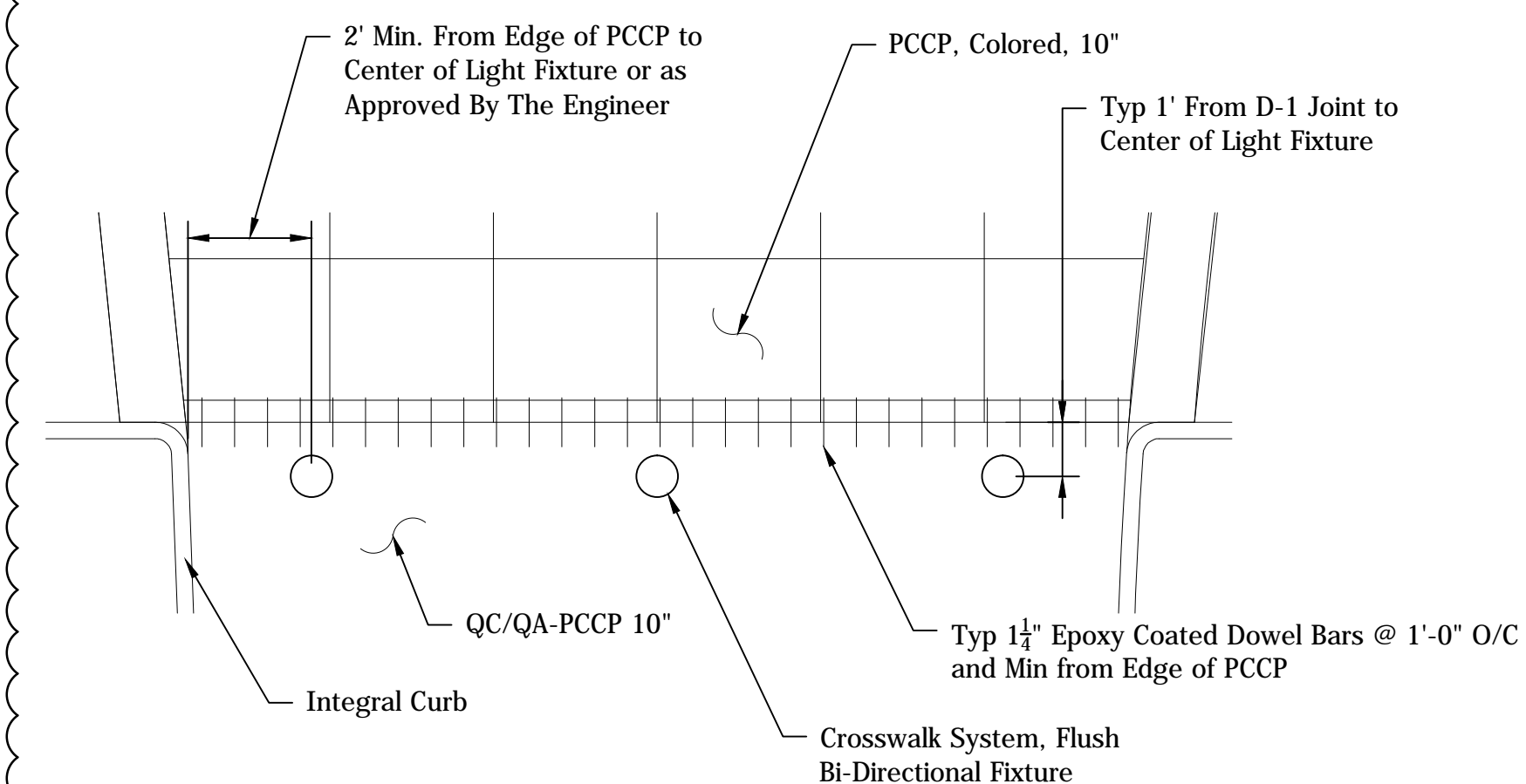


UNDERDRAIN FOR PAVEDRAIN
NOT TO SCALE

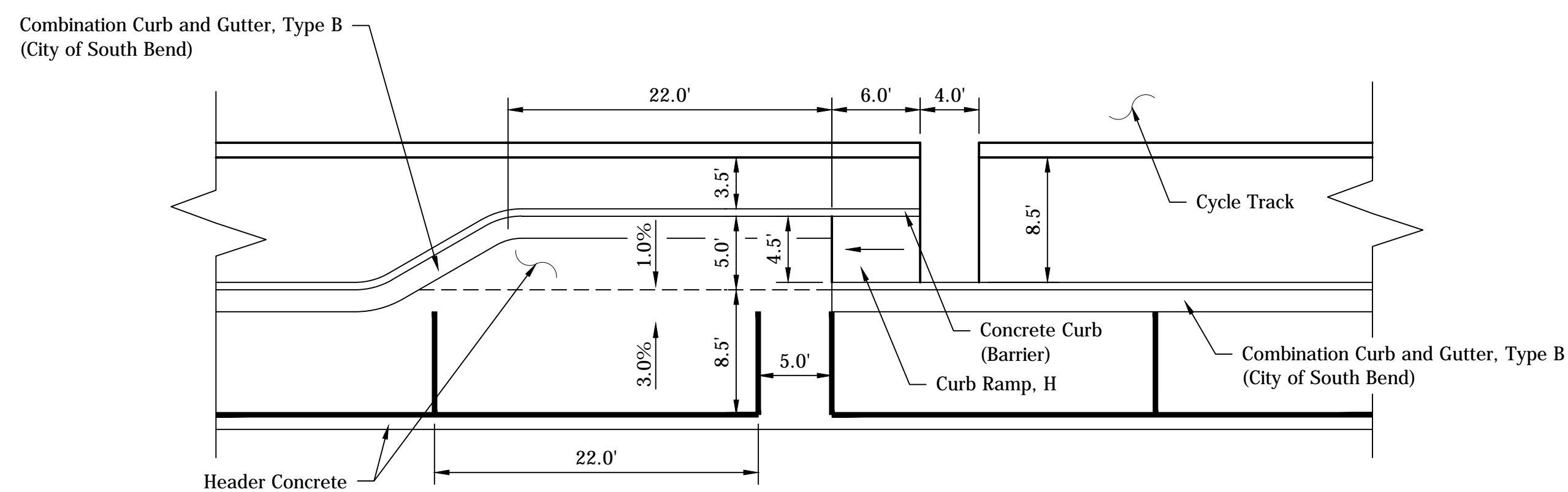


COVER CAP
MODIFIED MANHOLE H-10 AND J-10
NOT TO SCALE

NOTE:
Cover to be manufactured in accordance with ASTM C478-07 and accommodate an AASHTO HS-20 loading.

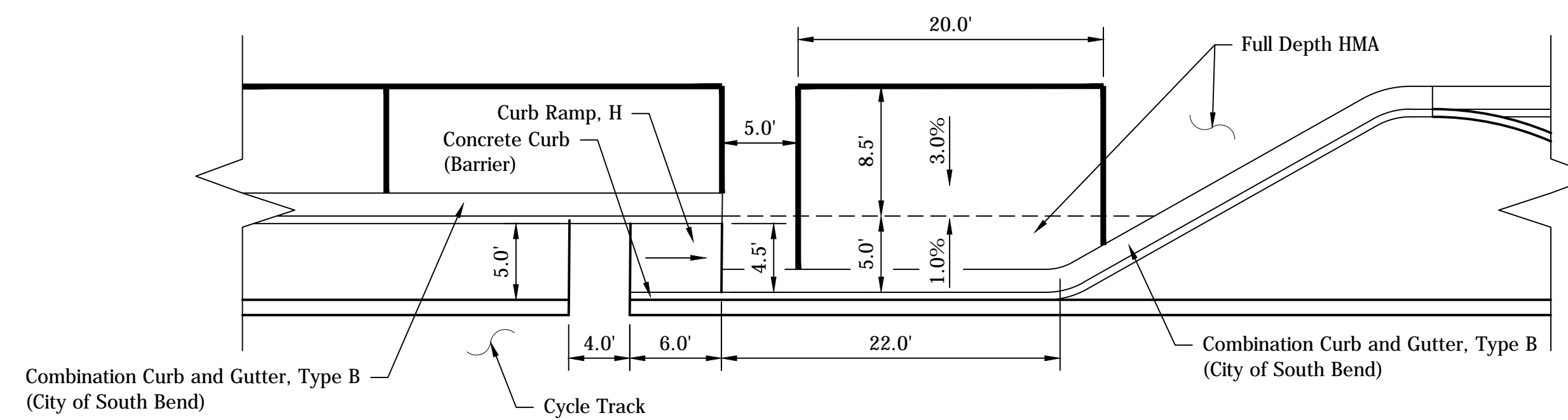


FLUSH BI-DIRECTIONAL LIGHT FIXTURES
(PLAN VIEW)
NOT TO SCALE



ADA PARALLEL PARKING ACCESS LANE (MAIN STREET)
NOT TO SCALE

NOTE:
PaveDrain not shown for clarity



ADA PARALLEL PARKING ACCESS LANE (MAIN STREET)
NOT TO SCALE

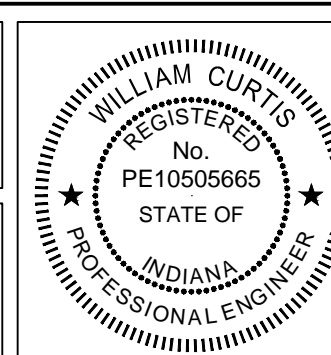
JOHN - 1/27/2016 10:20 AM - \\UCS04FS\Road\RoadTeam3\CSD\14-416\Road\Draw\Plans\Typical Sections.dwg



1625 N. Post Road
Indianapolis, IN 46219
Phone 317-895-2585
Fax 317-895-2596
www.ucindy.com

△ Cross walk system details added as alternate work items

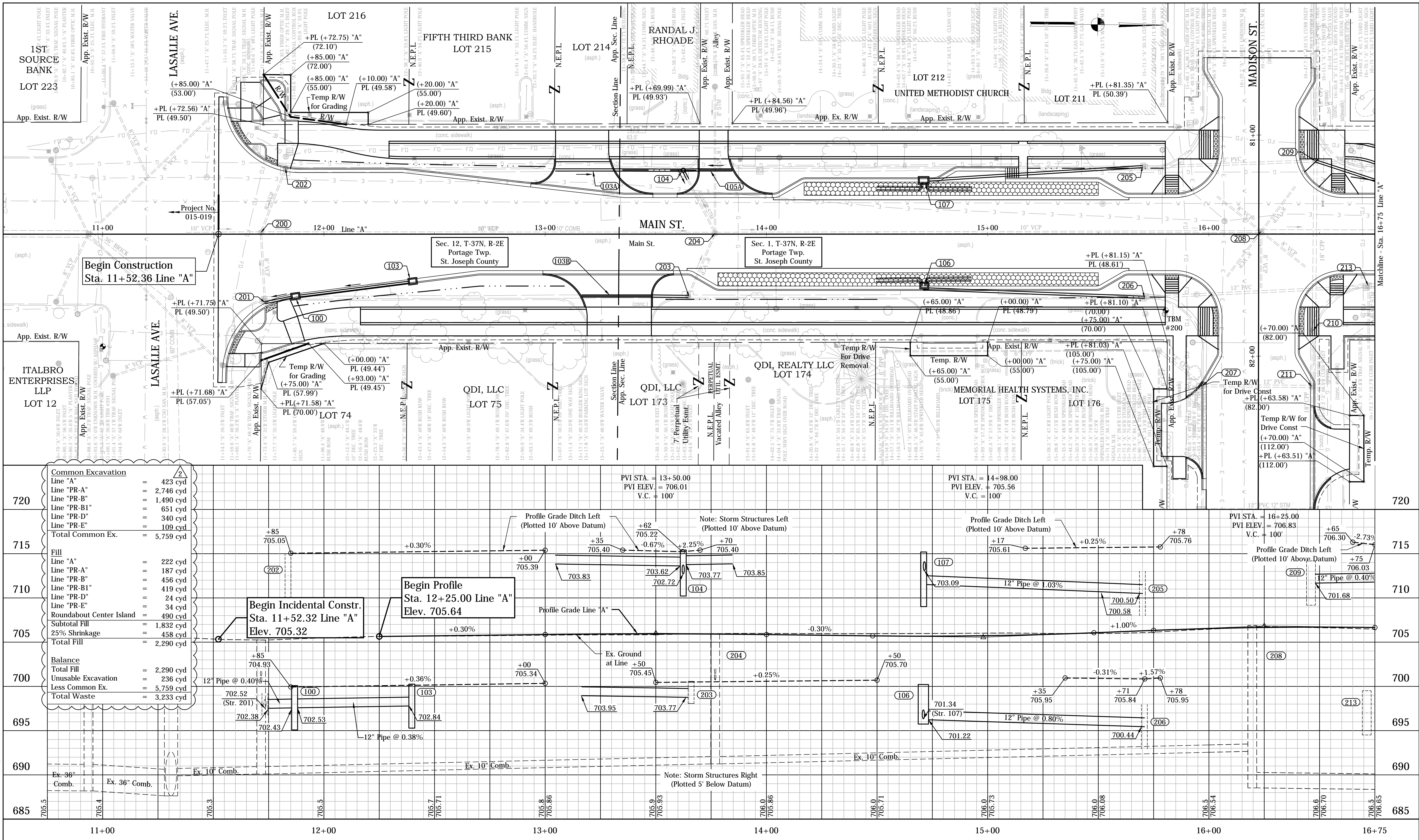
William Curtis
SIGNATURE DATE



CITY OF SOUTH BEND, INDIANA
ROUNDABOUT INTERSECTION AT
MARION, MICHIGAN, & MAIN STREETS

MISCELLANEOUS DETAILS

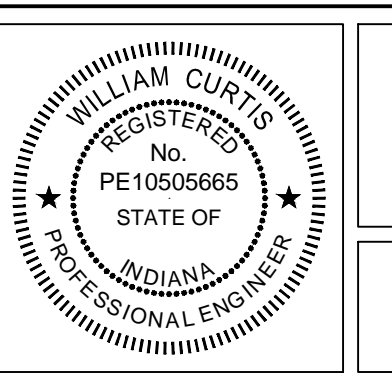
REVISIONS	HORIZONTAL SCALE AS SHOWN	PROJECT NUMBER 114-035
	VERTICAL SCALE AS SHOWN	SHEETS
DRAWN: JNII	SURVEY BOOK	9 OF 107
CHECKED: WRC	DATE / /	



1625 N. Post Road
 Indianapolis, IN 46219
 Phone 317-895-2585
 Fax 317-895-2596
 www.ucindy.com

Revised earthwork table, roundabout center island fill added.

WRC
 SIGNATURE DATE



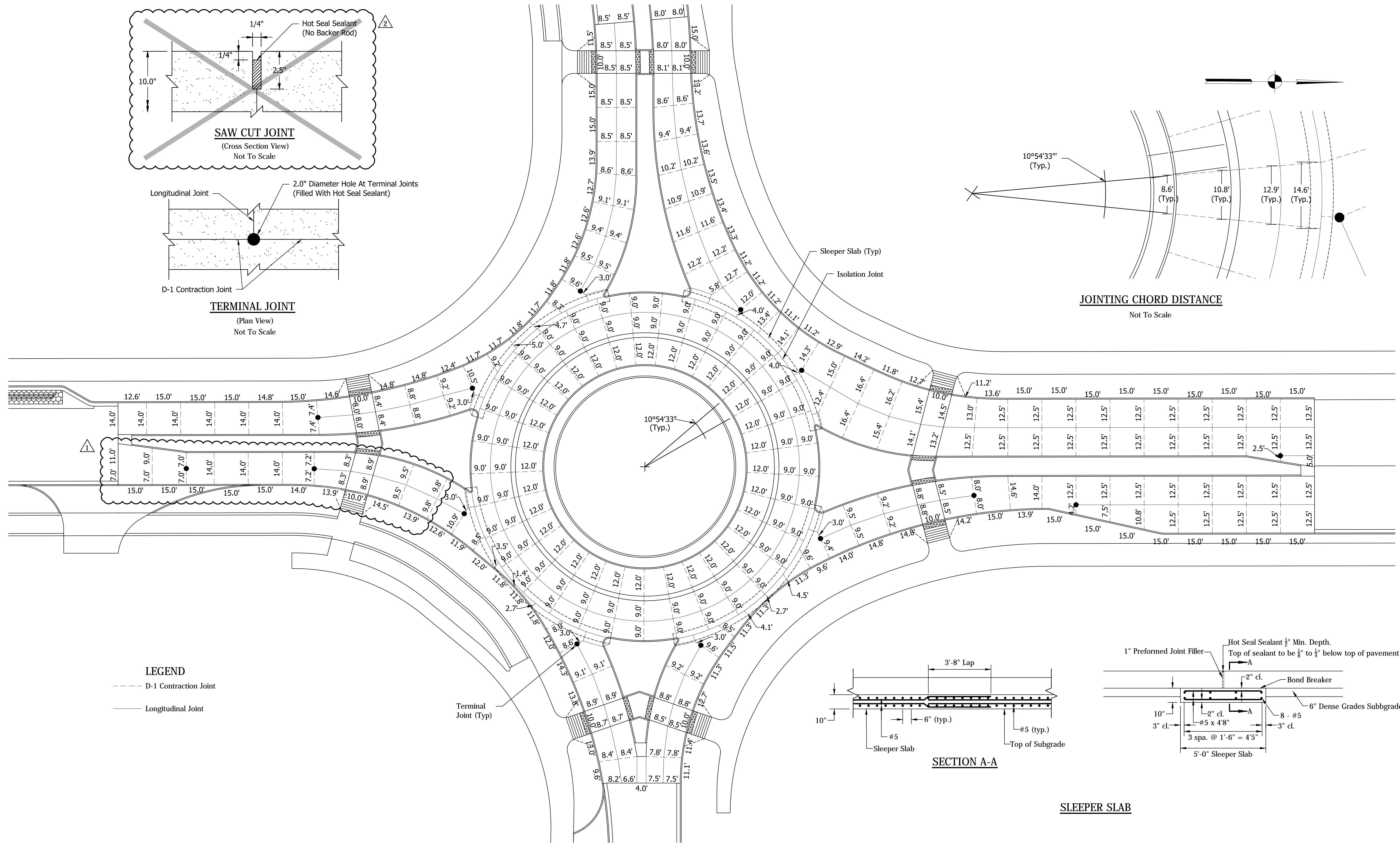
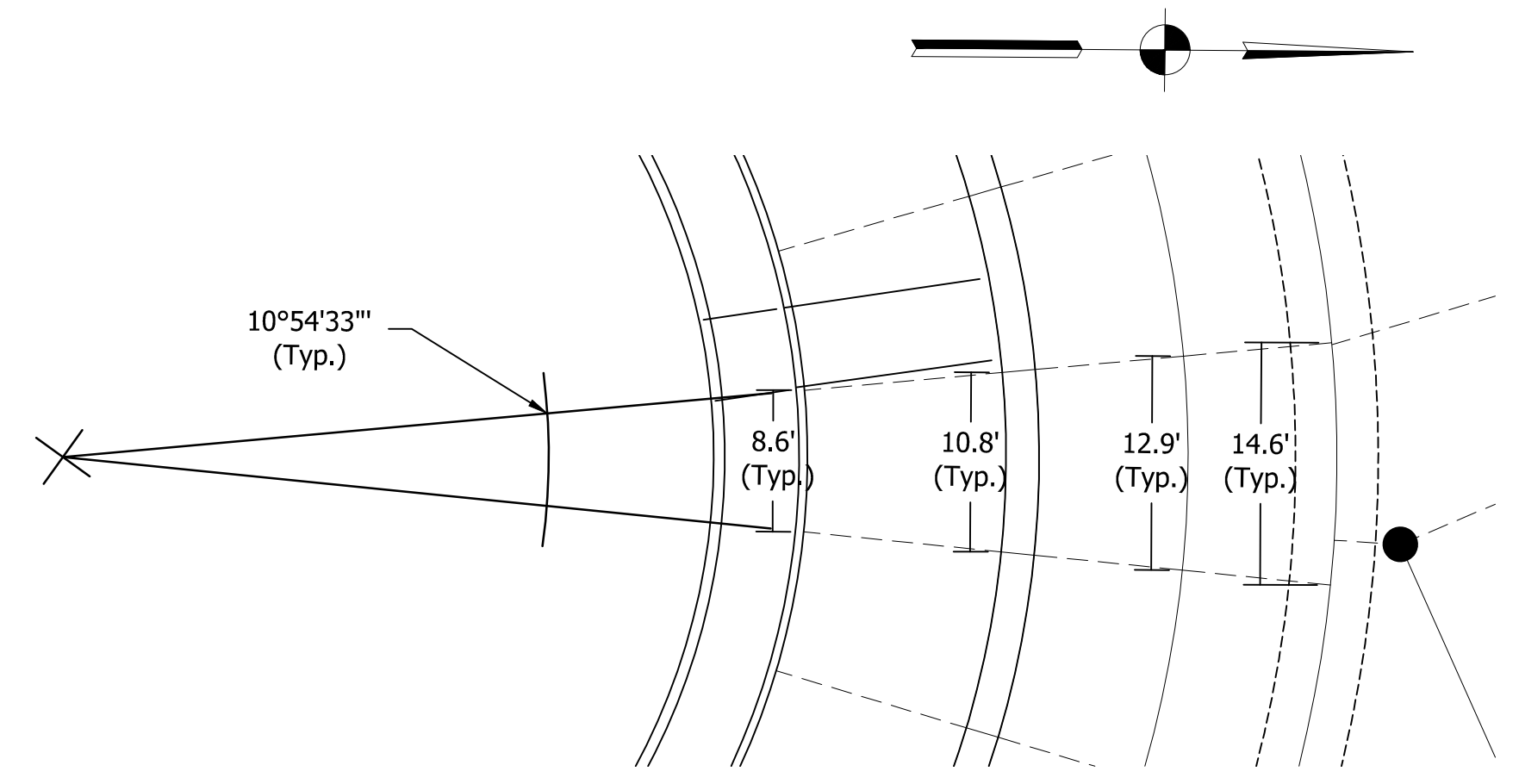
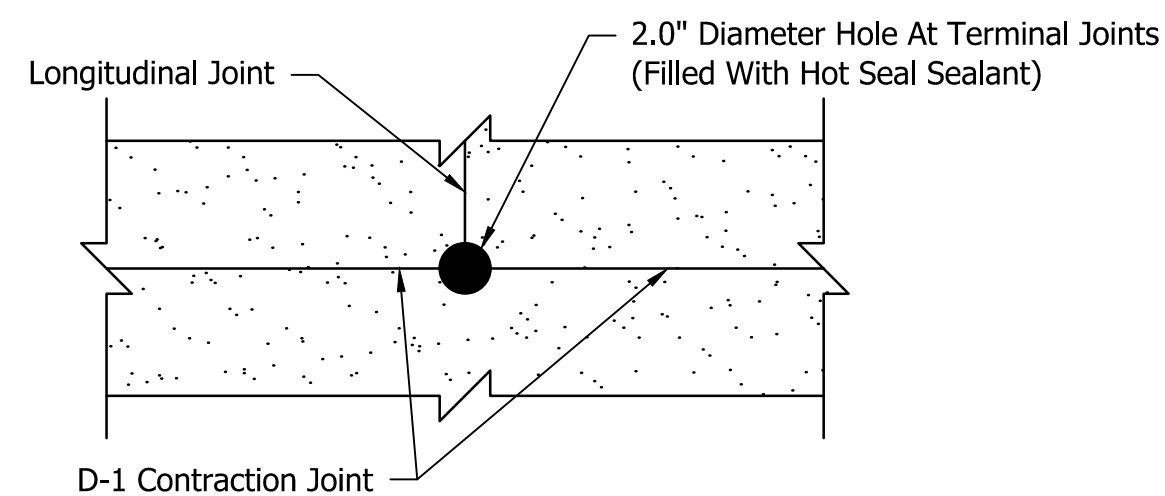
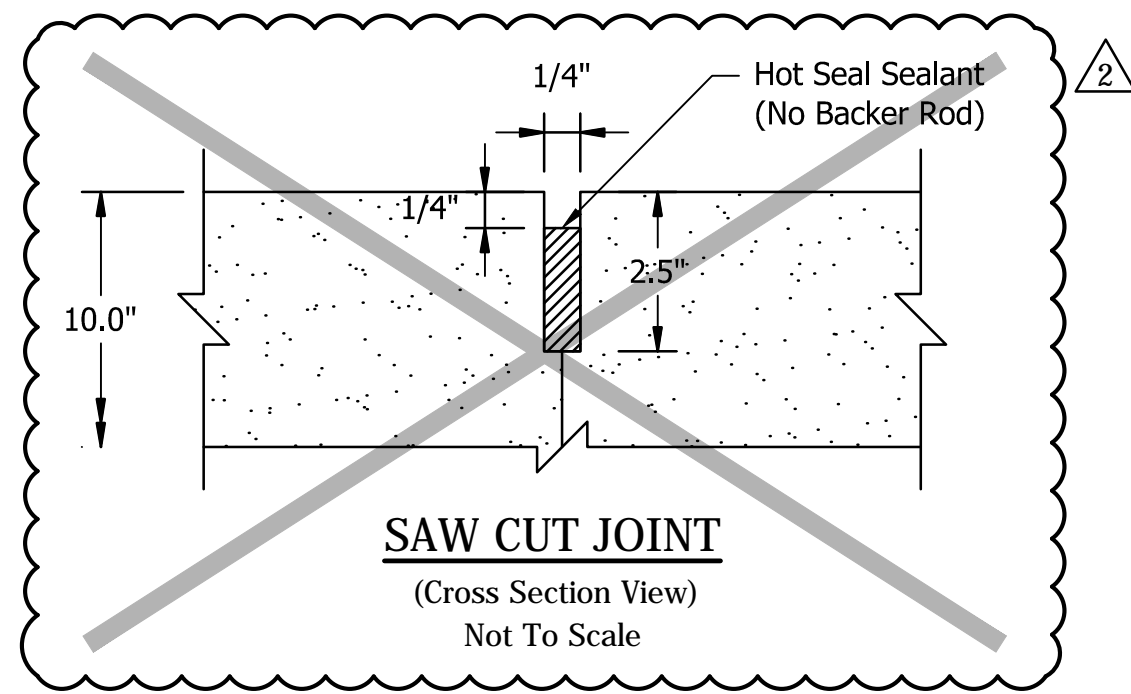
CITY OF SOUTH BEND, INDIANA
 ROUNDABOUT INTERSECTION AT
 MARION, MICHIGAN, & MAIN STREETS

PLAN & PROFILE
 LINE "A" - MAIN ST.

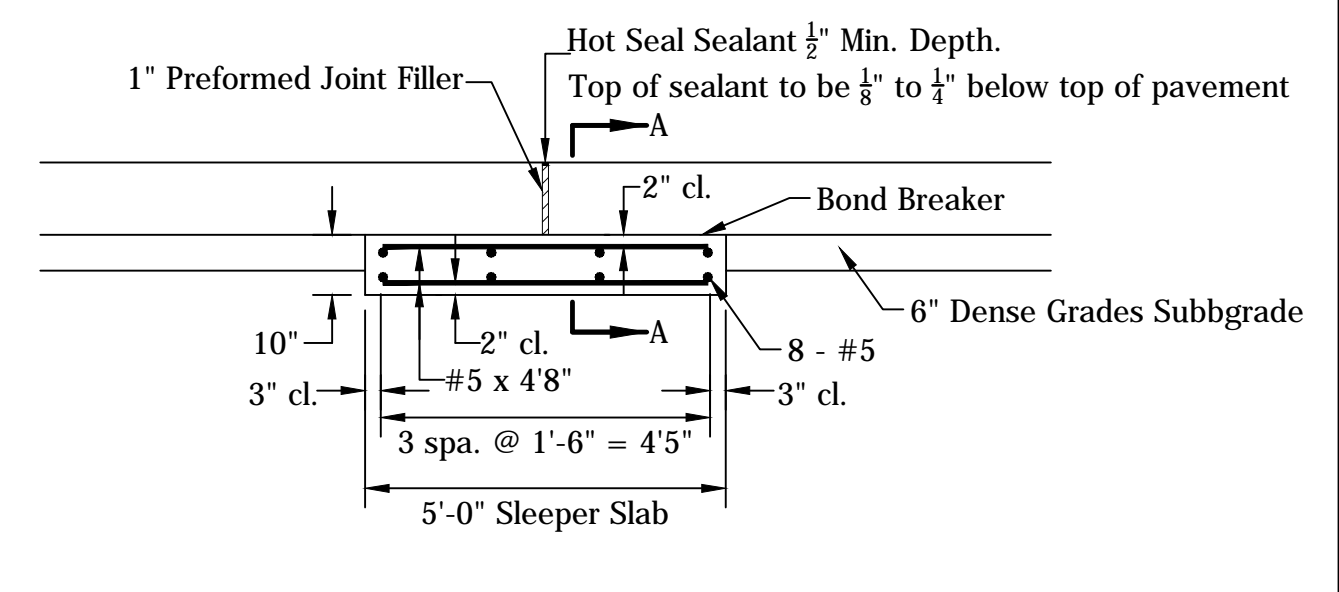
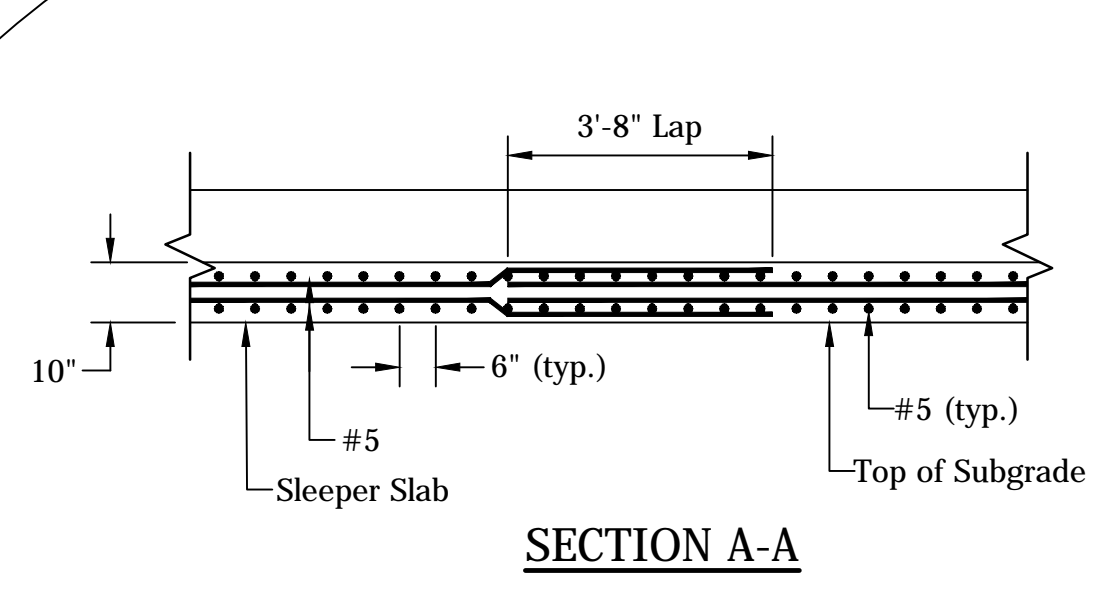
REVISIONS	HORIZONTAL SCALE 1"=20'	PROJECT NUMBER 114-035
	VERTICAL SCALE 1"=5'	SHEETS 28 OF 107
DRAWN: JNII	SURVEY BOOK	
CHECKED: WRC	DATE	

File Name: p:\CD\14-416\Road\Draw\Plans\Plan & Profile Line PRA.dwg Plot Date: 1/27/2016 Plotted By: Nmz, John

JOHN - 1/27/2016 10:02 AM - P:\C3D\14-416\Road\Drawings\Plans\RAB_Jointing_Details.dwg



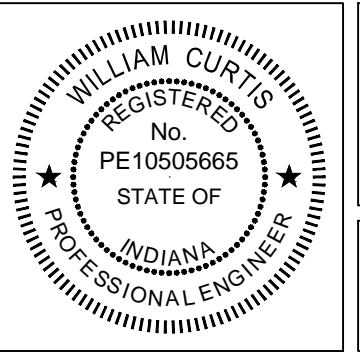
LEGEND
 - - - - - D-1 Contraction Joint
 ————— Longitudinal Joint



1625 N. Post Road
 Indianapolis, IN 46219
 Phone 317-895-2585
 Fax 317-895-2596
 www.ucindy.com

① Revised jointing layout
 ② Deleted "saw cut joint detail"

William Curtis
 SIGNATURE DATE

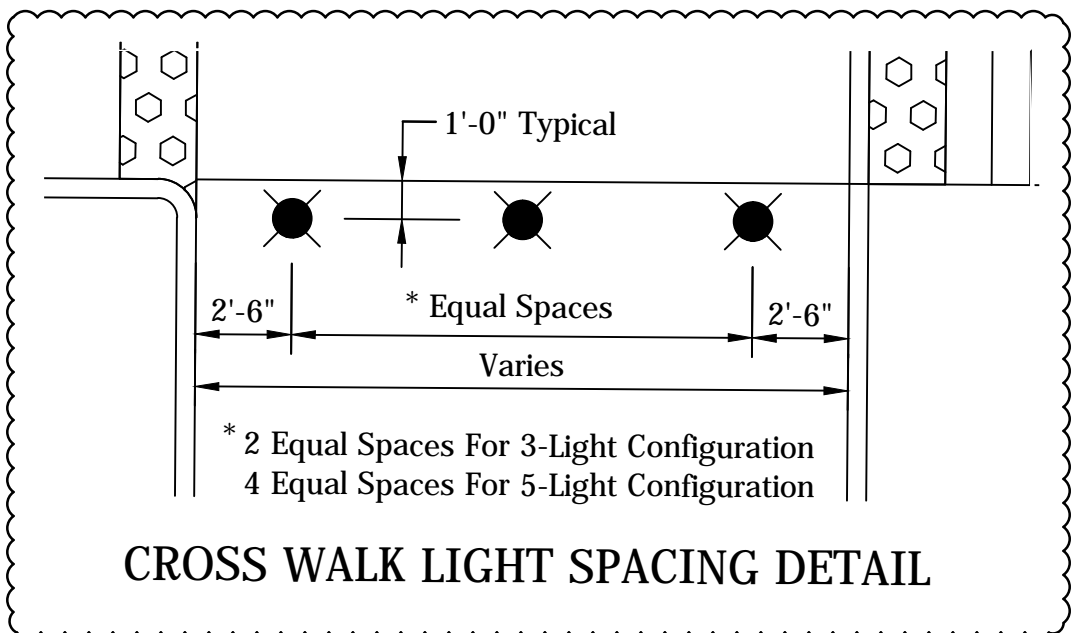
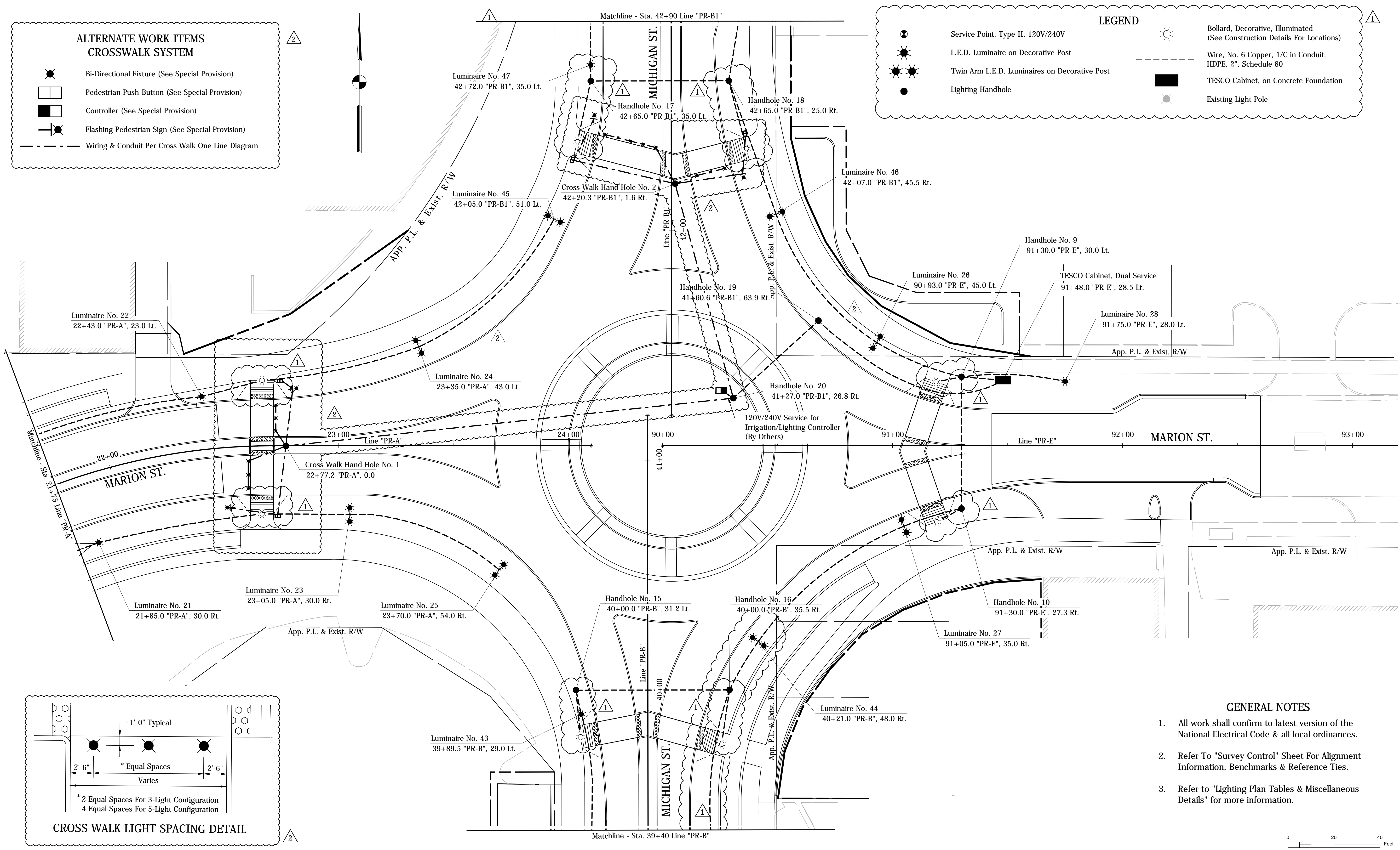
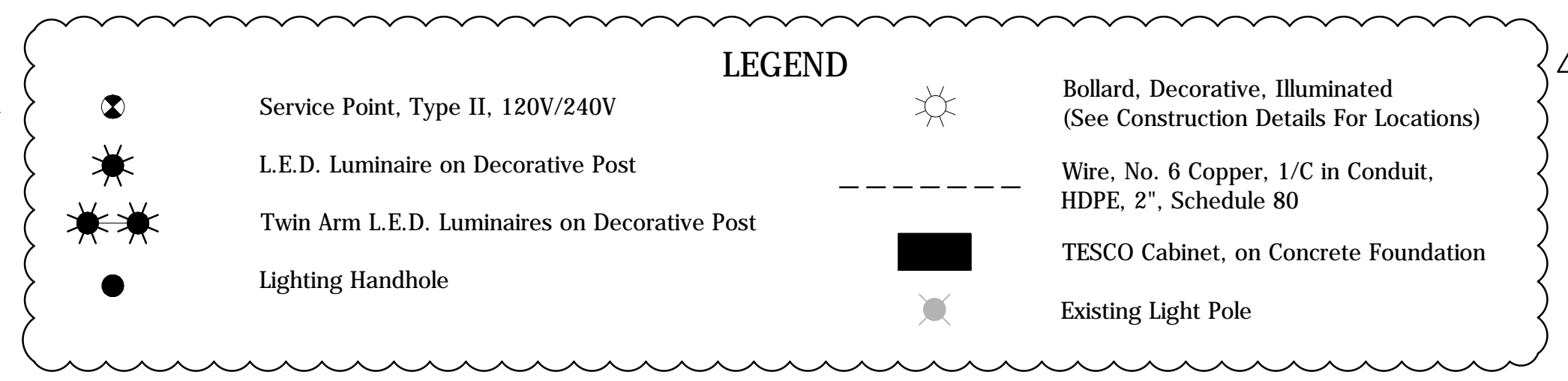
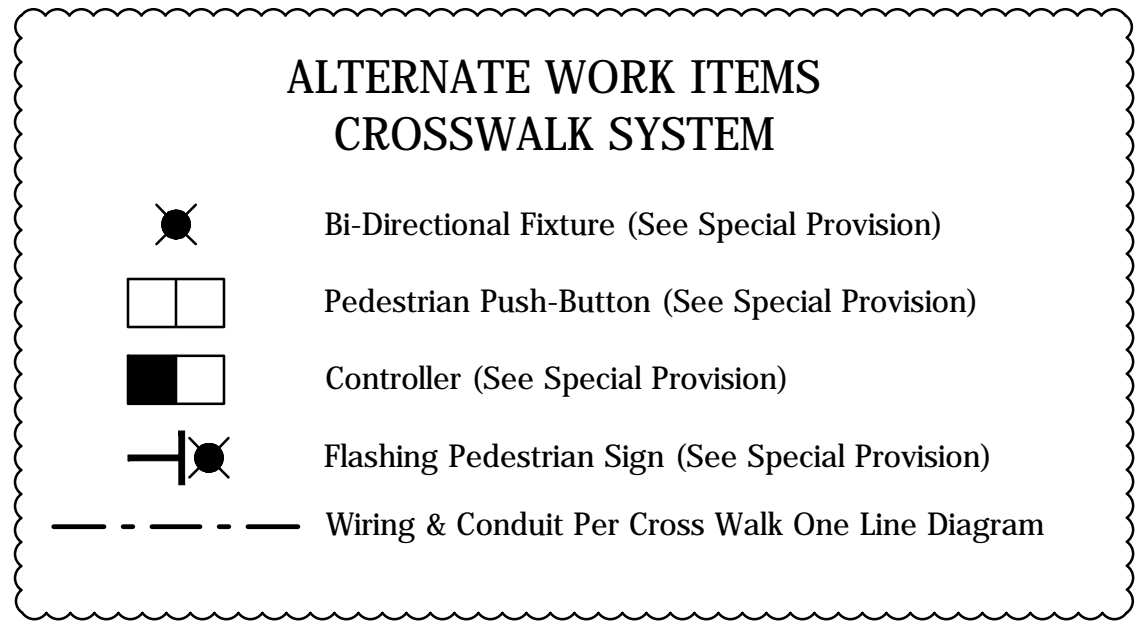


**CITY OF SOUTH BEND, INDIANA
 ROUNDABOUT INTERSECTION AT
 MARION, MICHIGAN, & MAIN STREETS**

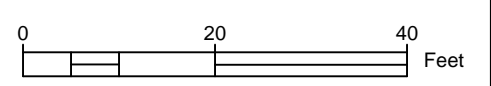
ROUNDABOUT JOINTING DETAIL

REVISIONS	HORIZONTAL SCALE 1"=20'	PROJECT NUMBER 114-035
	VERTICAL SCALE N/A	
DRAWN: JNII	SURVEY BOOK	SHEETS
CHECKED: WRC	DATE	50 OF 107

JOHN - 1/27/2016 10:03 AM - \\UCS04FS\Road\RoadTeam3\C3D\14-416-Road\Drawg\Plans\Lighting\Plans.dwg



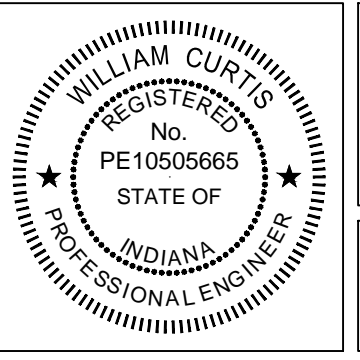
- GENERAL NOTES**
- All work shall confirm to latest version of the National Electrical Code & all local ordinances.
 - Refer To "Survey Control" Sheet For Alignment Information, Benchmarks & Reference Ties.
 - Refer to "Lighting Plan Tables & Miscellaneous Details" for more information.



1625 N. Post Road
Indianapolis, IN 46219
Phone 317-895-2585
Fax 317-895-2596
www.ucindy.com

- 1 Revised lighting legend & added wiring for bollards & revised curb location
- 2 Crosswalk System Details Added as Alternate Work Items

WRC
SIGNATURE DATE

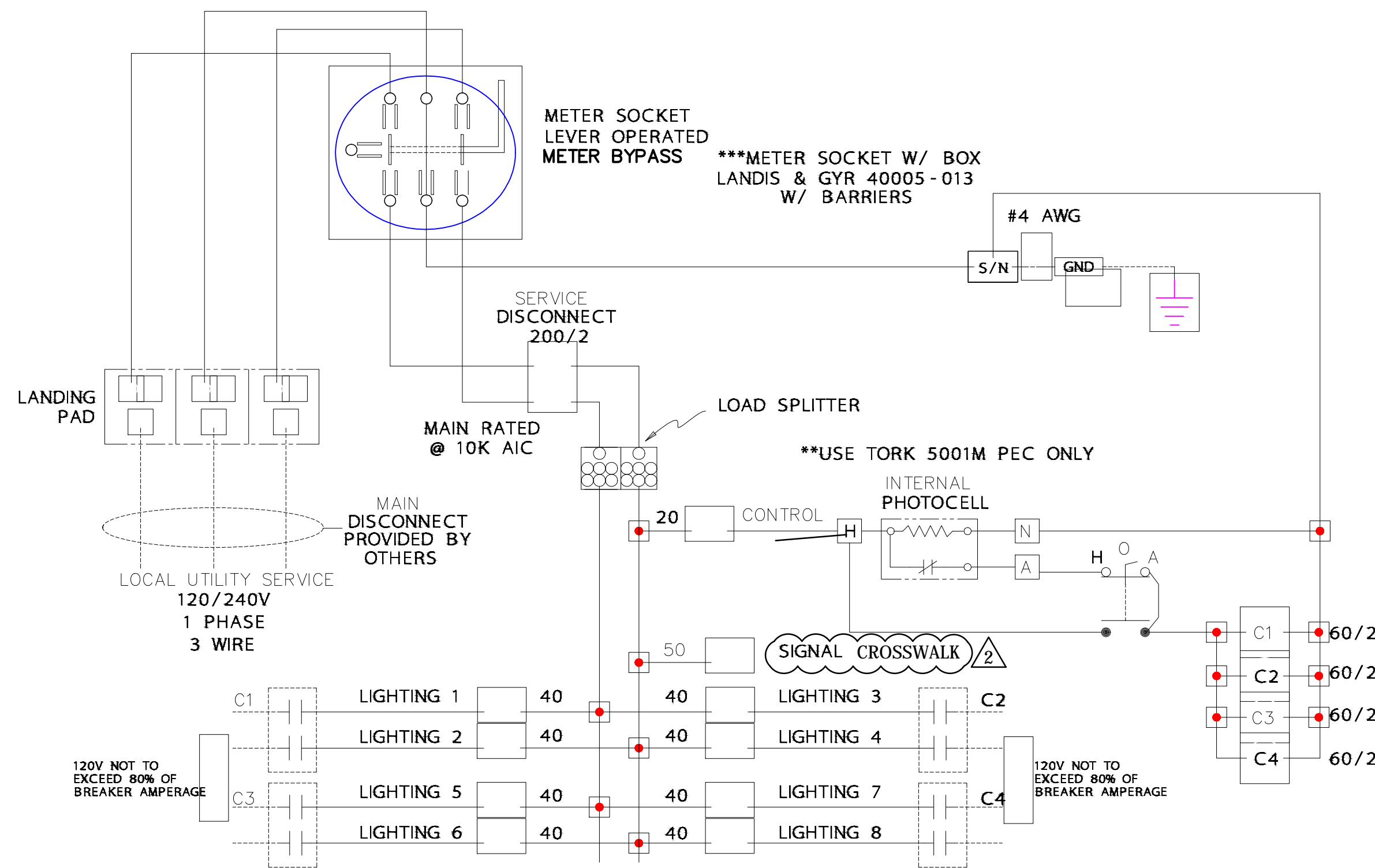


**CITY OF SOUTH BEND, INDIANA
ROUNDBOUT INTERSECTION AT
MARION, MICHIGAN, & MAIN STREETS**

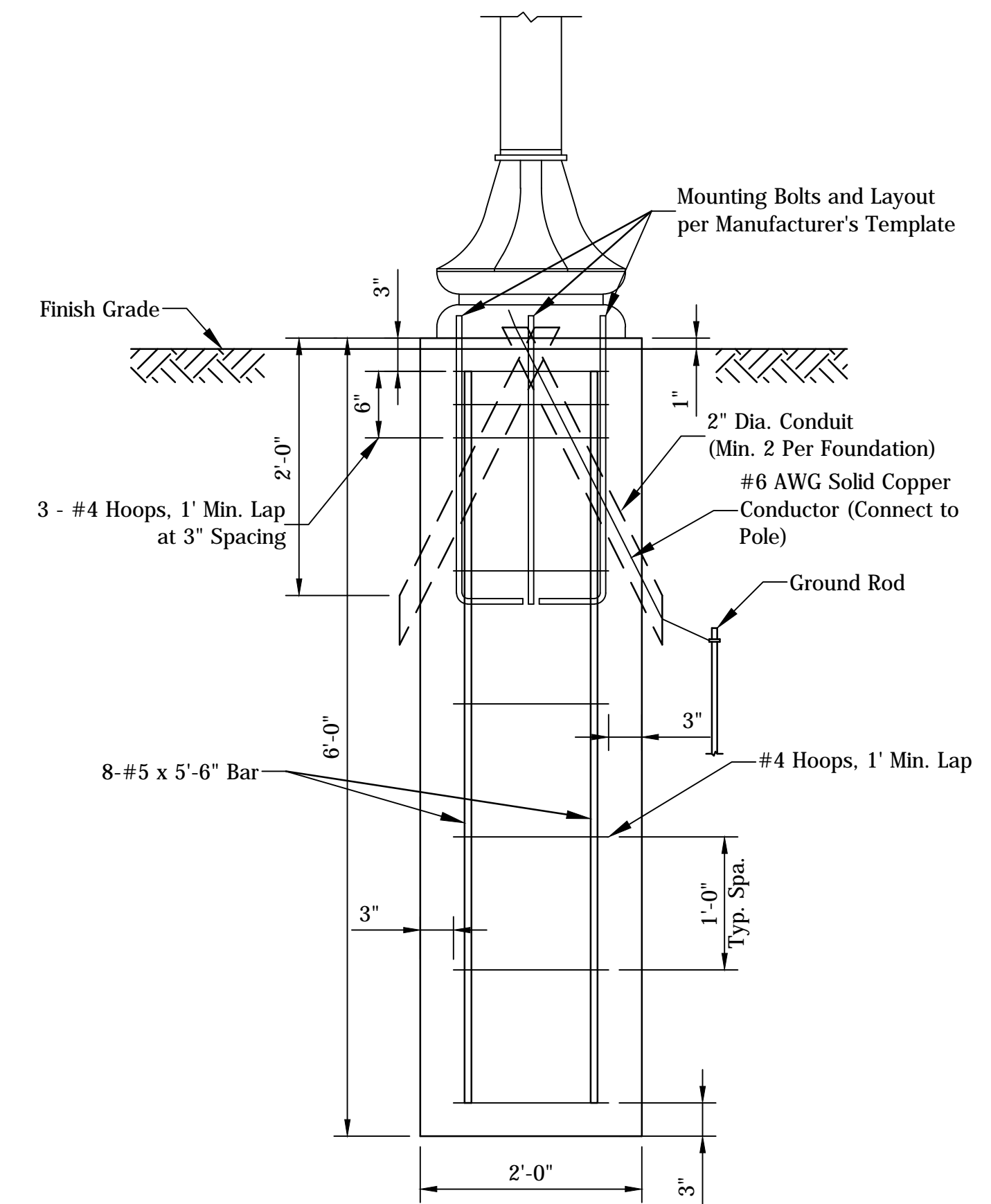
**LIGHTING PLAN
LINE "PR-A"/LINE "PR-E" - MARION ST.**

REVISIONS	HORIZONTAL SCALE 1"=20'	PROJECT NUMBER 114-035
	VERTICAL SCALE N/A	
DRAWN: JNII	SURVEY BOOK	SHEETS
CHECKED: WRC	DATE	65 OF 107

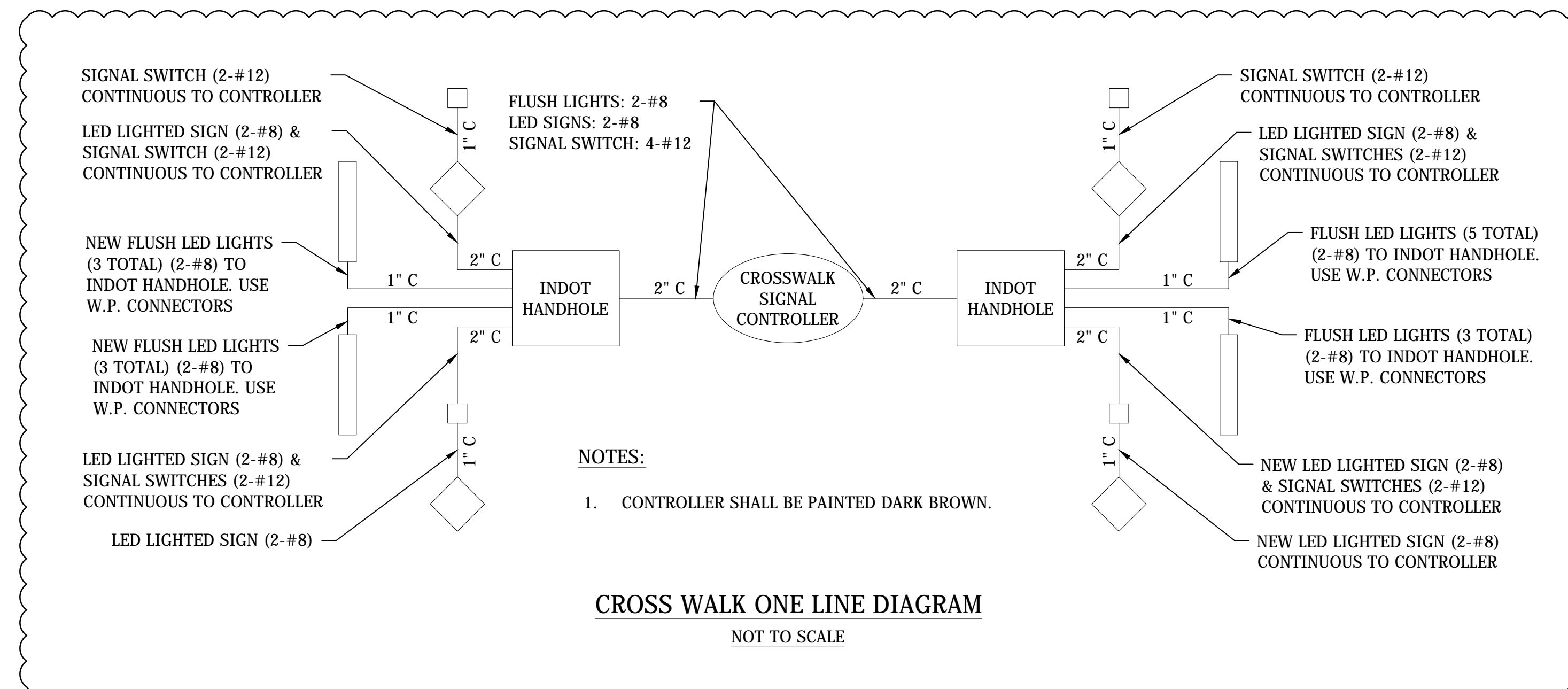
JOHN - 1/27/2016 10:03 AM - \\UCS04FS\Road\RoadTeam3\C3D\14-416\Road\Drawings\Lighting Misc Details.dwg



TESCO CABINET WIRING SCHEMATIC



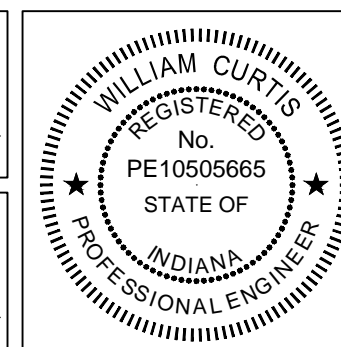
ORNAMENTAL LIGHT POLE
FOUNDATION



1625 N. Post Road
Indianapolis, IN 46219
Phone 317-895-2585
Fax 317-895-2596
www.ucindy.com

- 1 Revised detail title
- 2 Revised tesco cabinet wiring schematic.
Added cross walk one line diagram

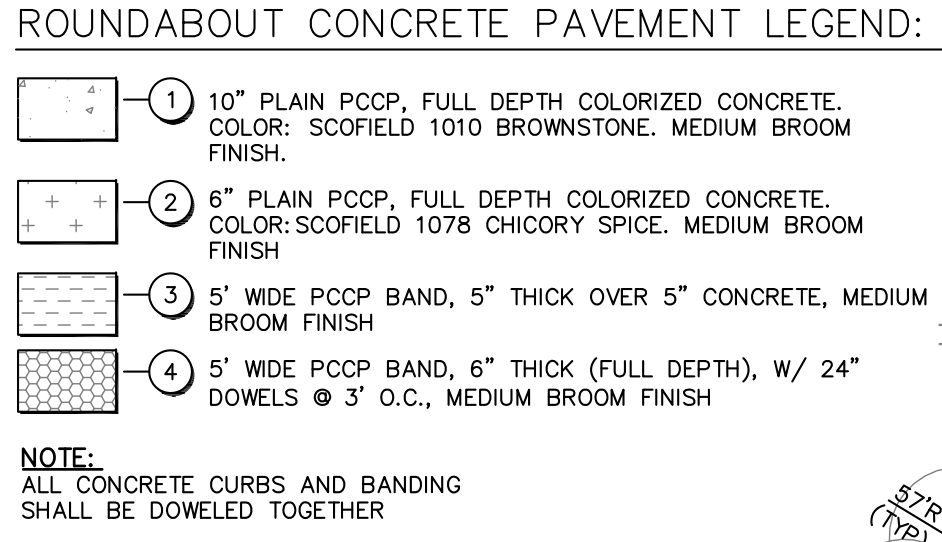
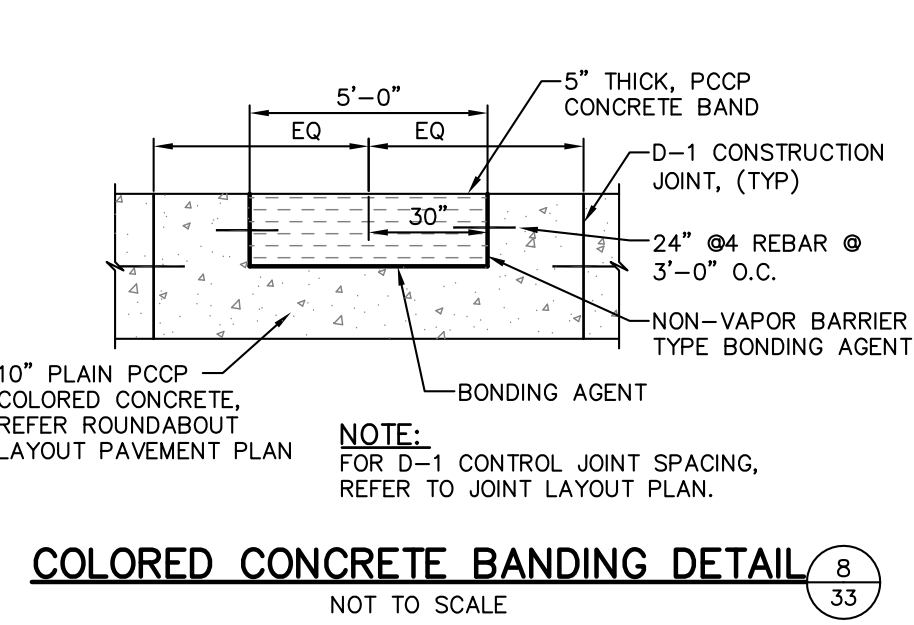
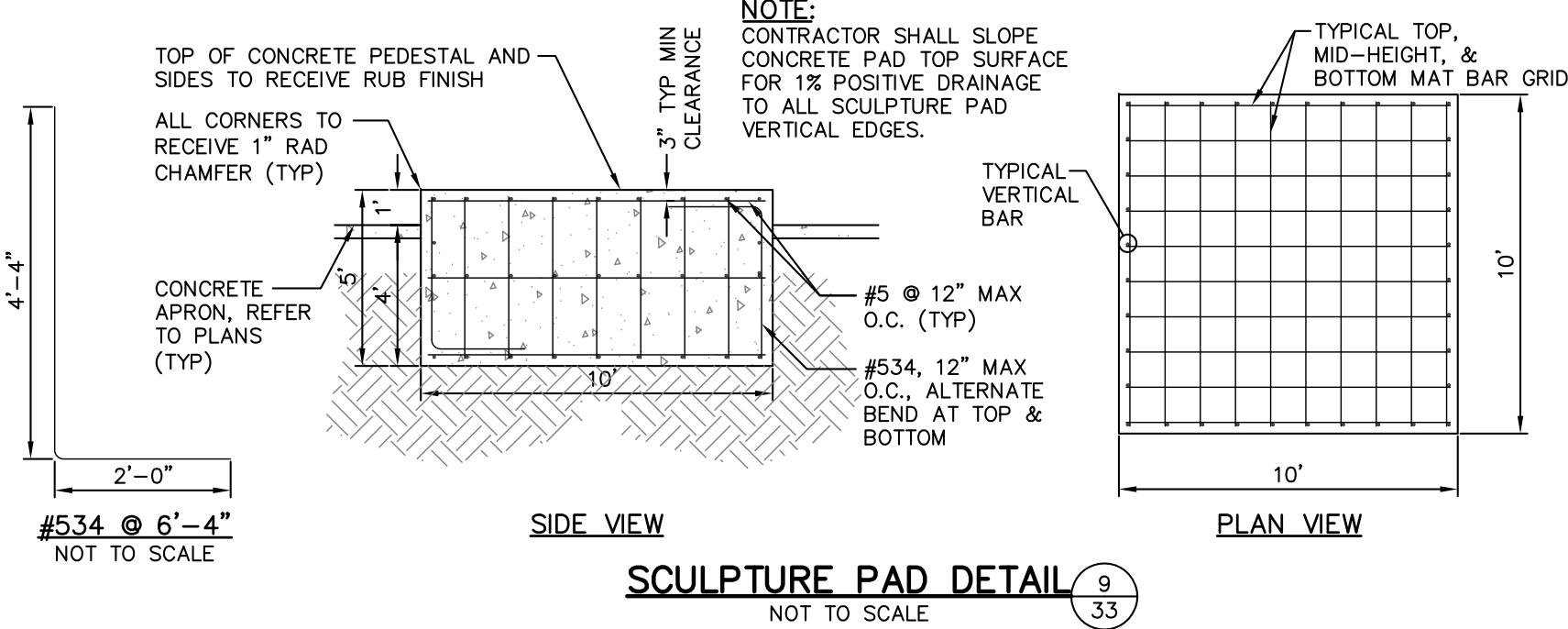
William Curtis
SIGNATURE DATE



CITY OF SOUTH BEND, INDIANA
ROUNDBOUT INTERSECTION AT
MARION, MICHIGAN, & MAIN STREETS

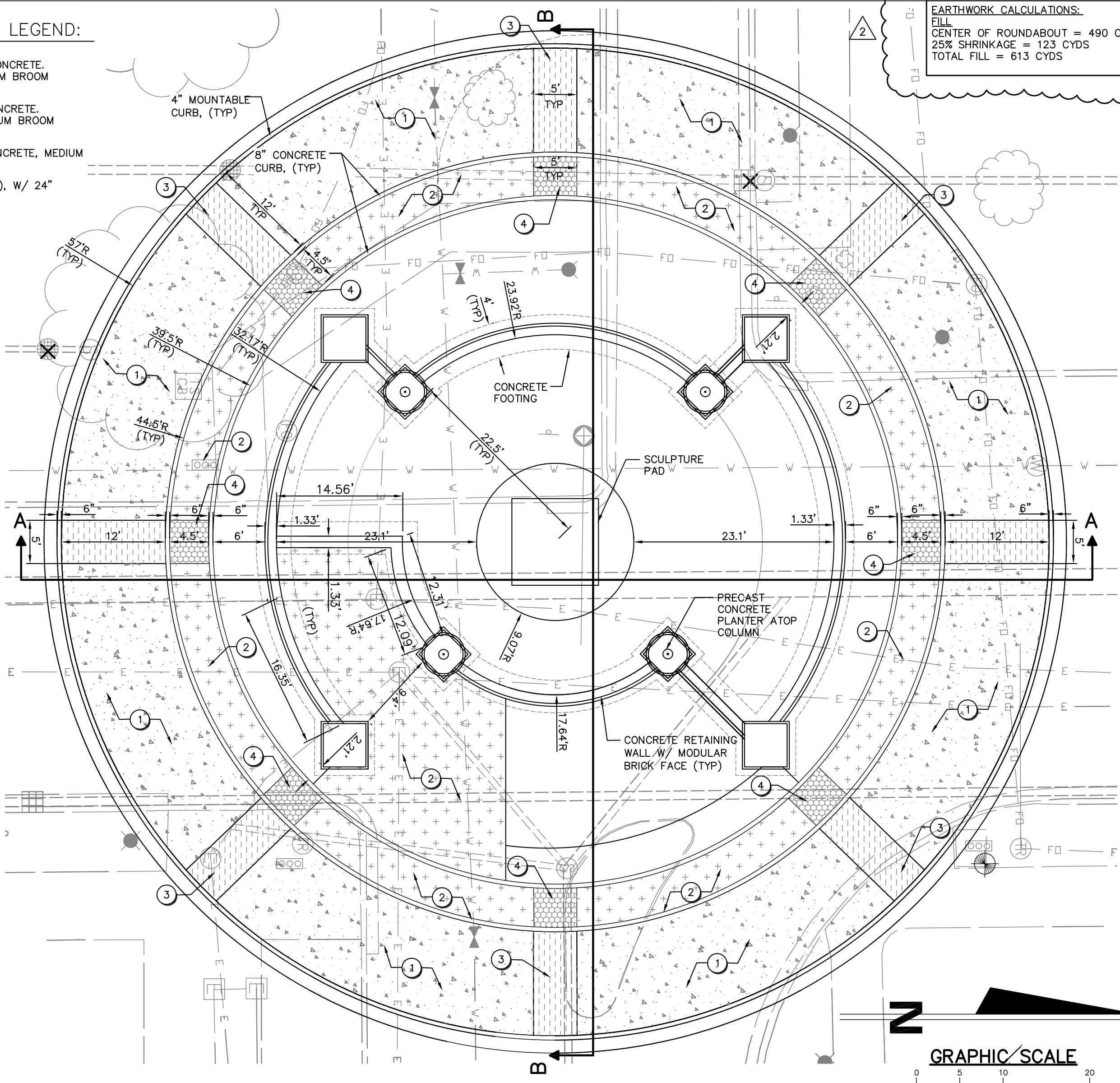
LIGHTING
MISCELLANEOUS DETAILS

REVISIONS	HORIZONTAL SCALE AS SHOWN	PROJECT NUMBER 114-035
	VERTICAL SCALE AS SHOWN	
DRAWN: JNII	SURVEY BOOK	SHEETS
CHECKED: WRC	DATE / /	70 OF 107



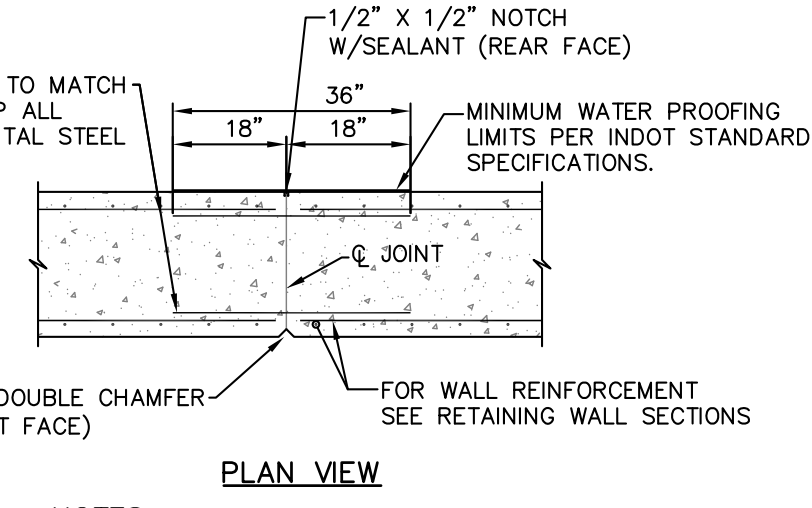
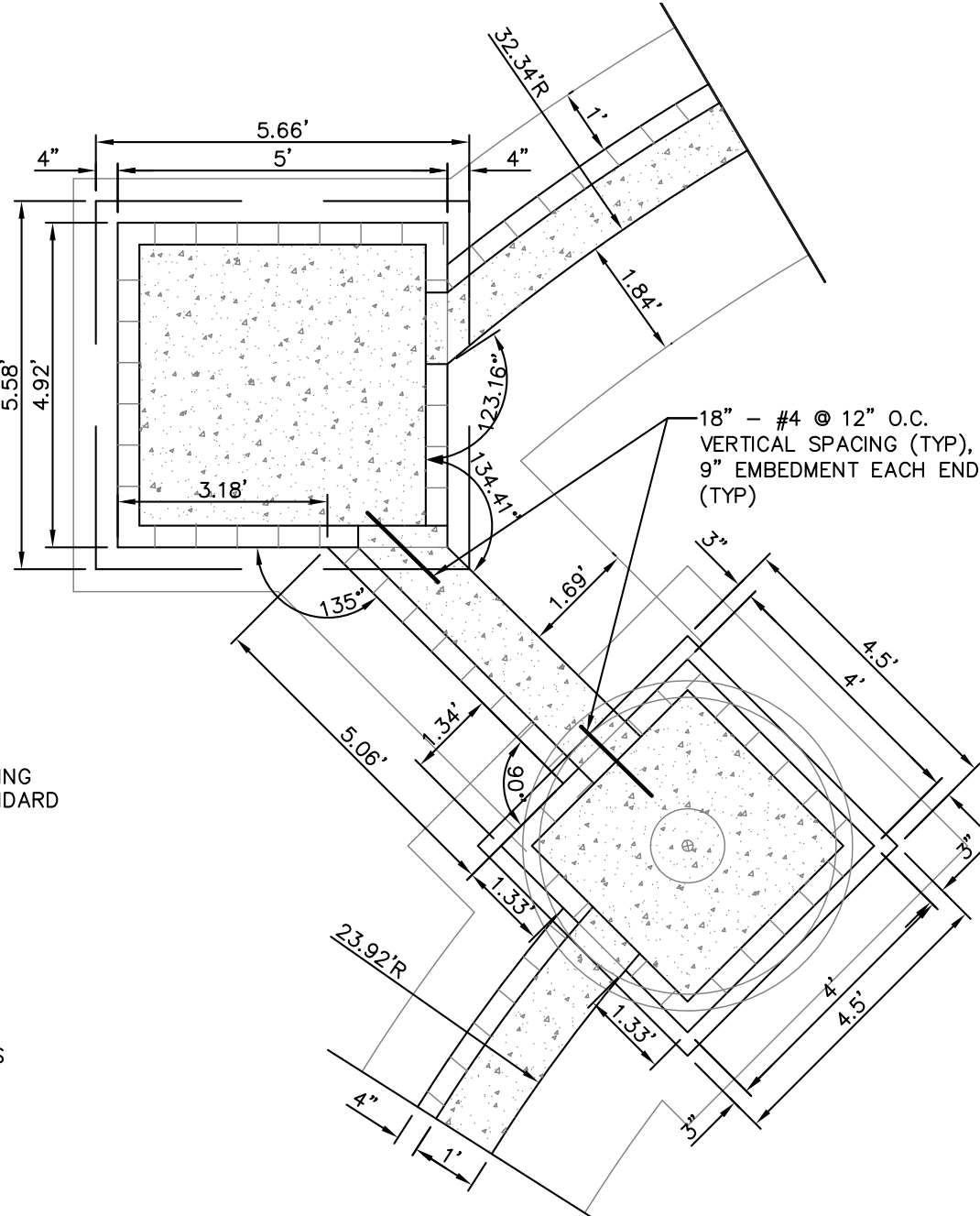
EARTHWORK CALCULATIONS:

FILL	CENTER OF ROUNDABOUT = 490 CYDS
25% SHRINKAGE = 123 CYDS	
TOTAL FILL = 613 CYDS	

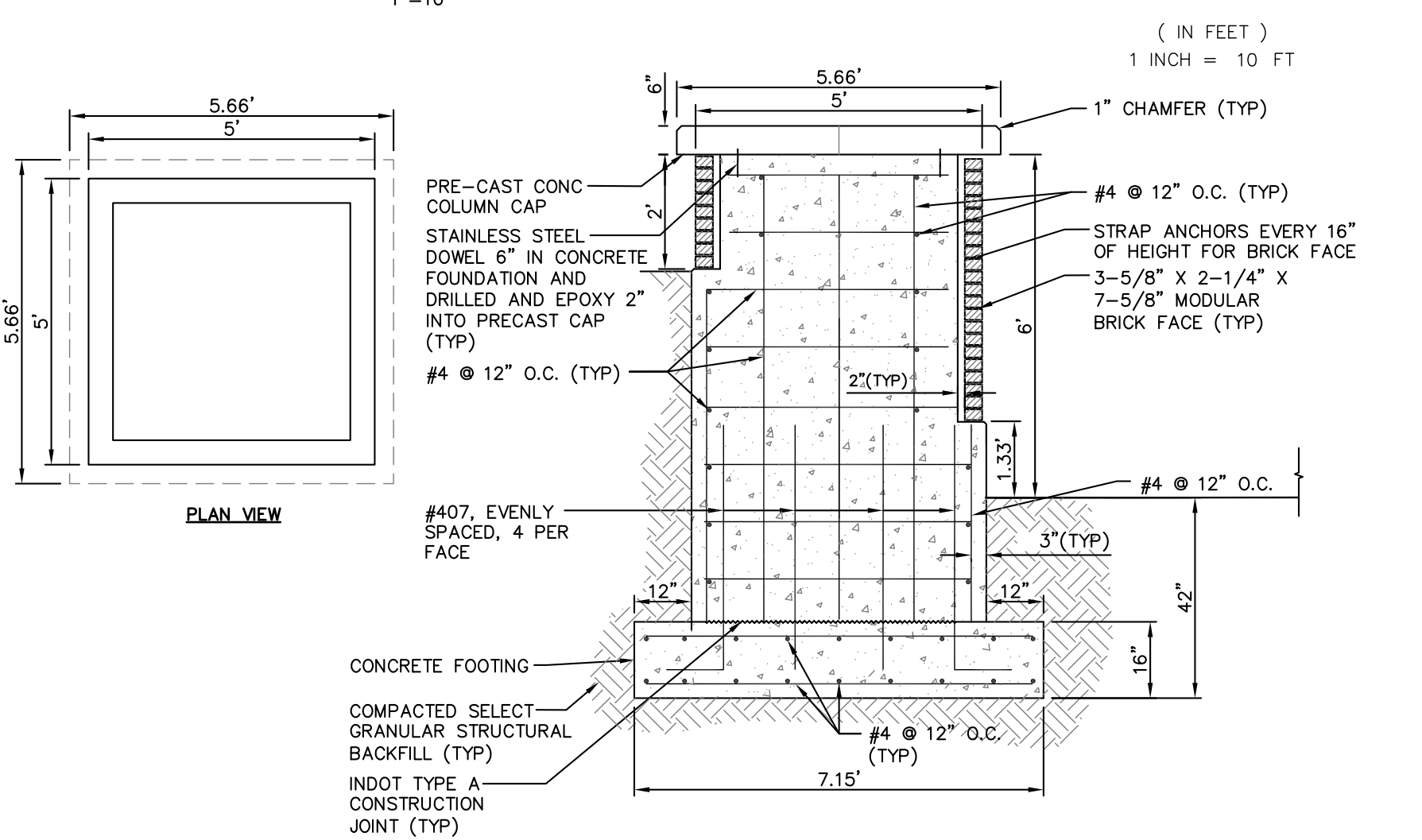
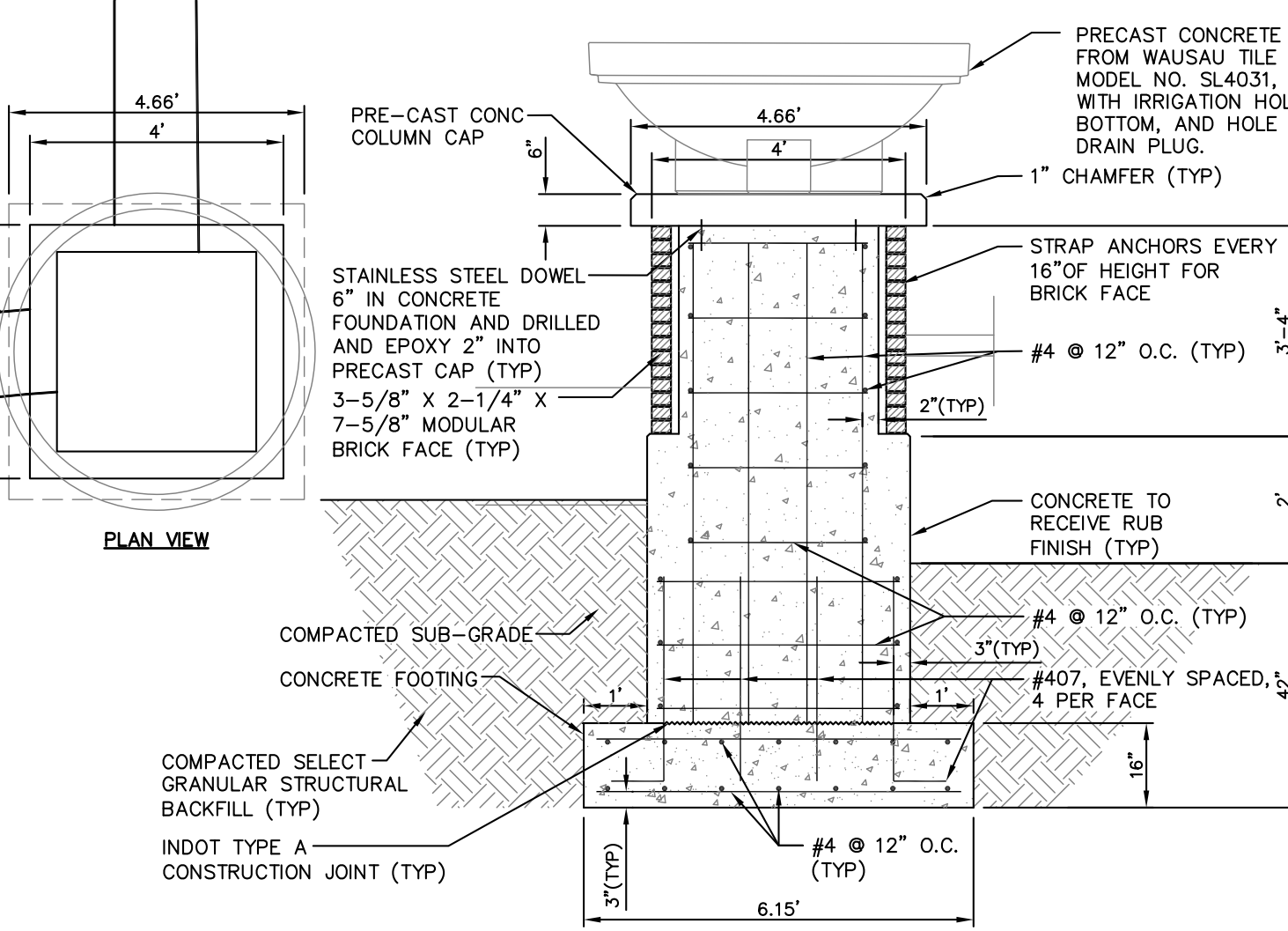
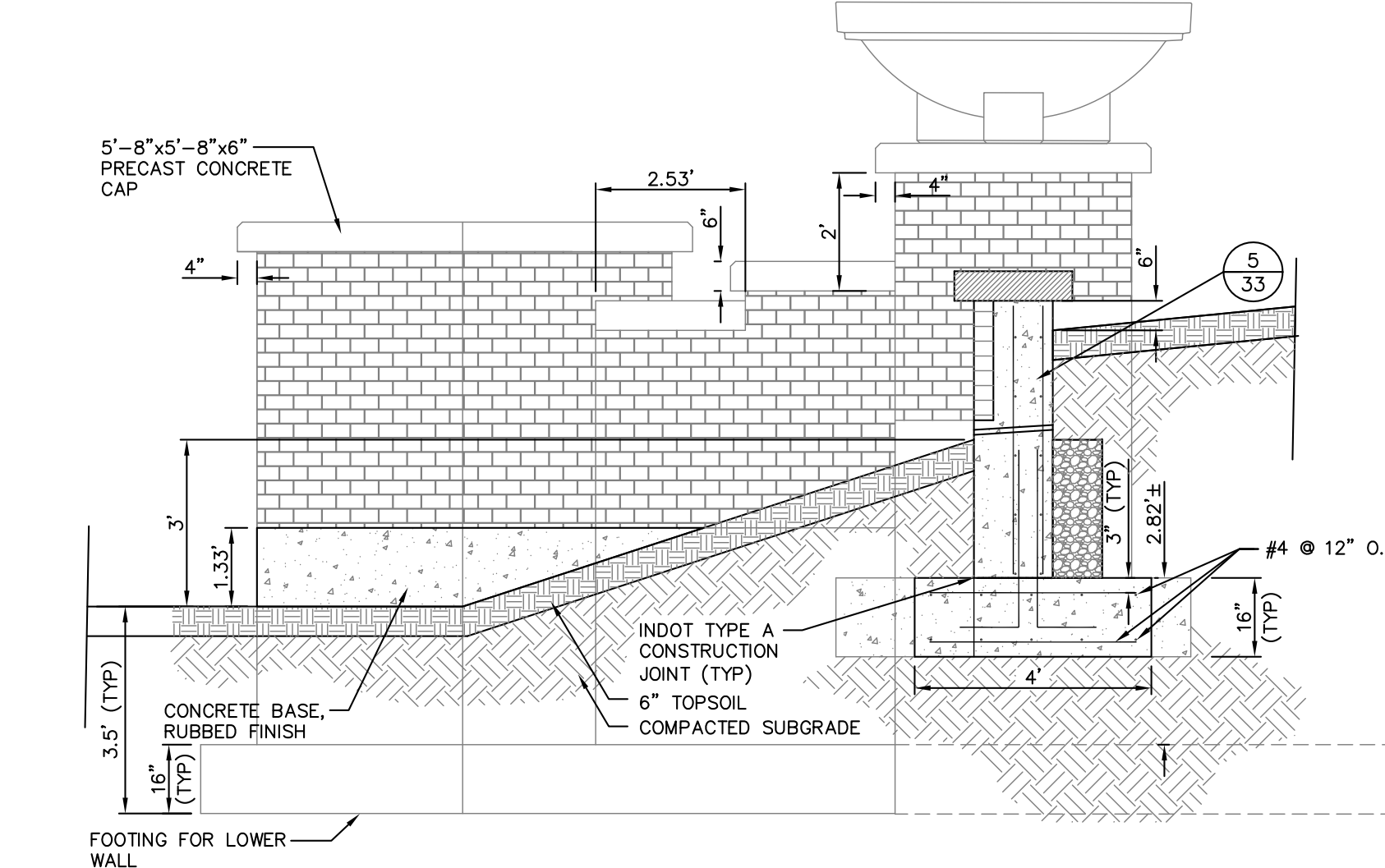
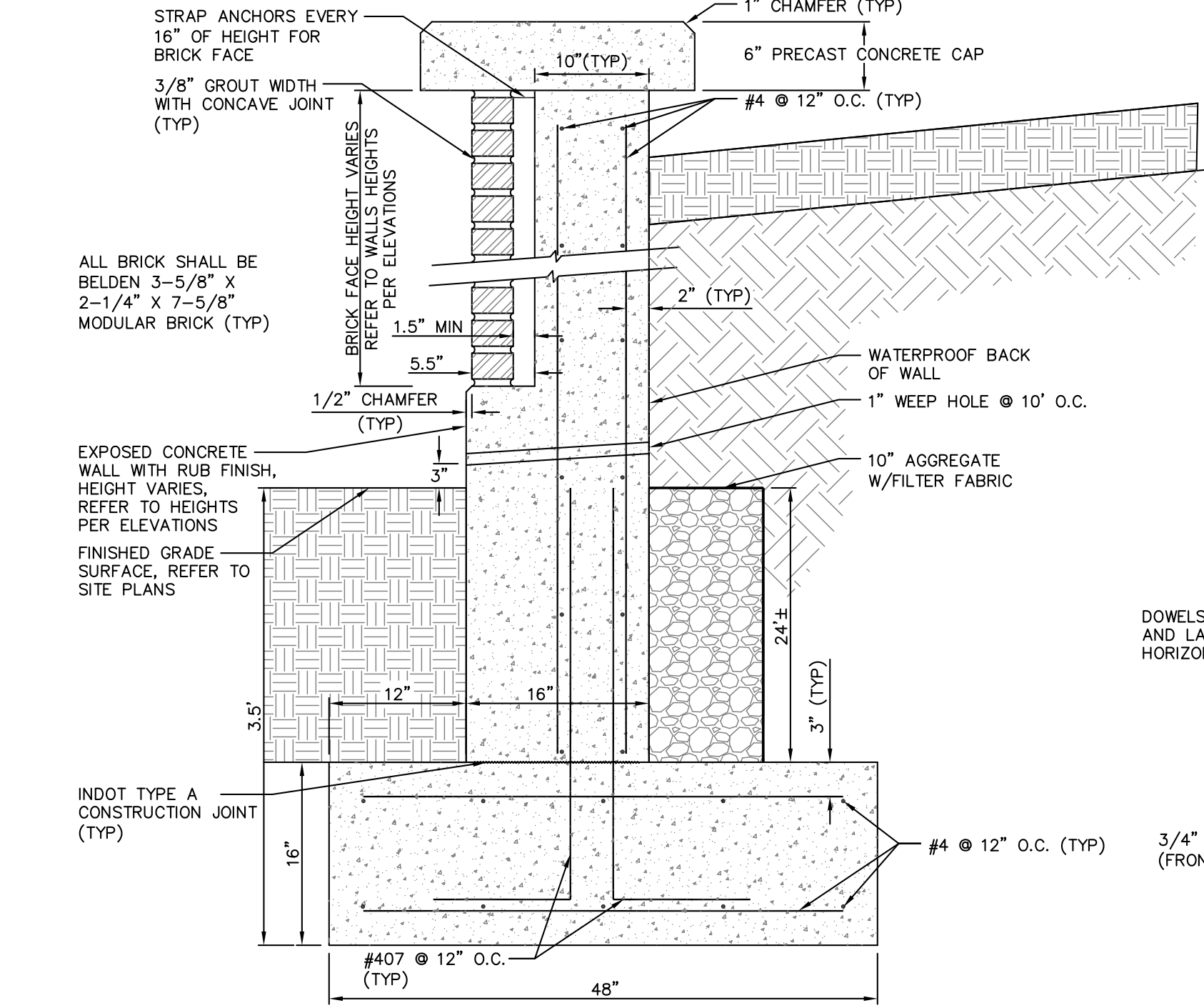


TYPICAL CONCRETE WALL AND COLUMN NOTES:

1. ALL REINFORCING STEEL SHALL BE GRADE 60 EPOXY COATED.
2. MINIMUM REBAR LAP: #4 = 18"
3. CONTRACTOR SHALL INSTALL STRAP ANCHORS EVERY 16" OF HEIGHT FOR BRICK FACE.
4. CONTRACTOR SHALL INSTALL 6" BRICK LEDGE AT ALL LOCATIONS TO RECEIVE BRICK FACE. 6" SHALL BE A 5-1/2" LEDGE WITH 1/2" FRONT EDGE CHAMFER. CONTRACTOR SHALL ALLOW MIN 1-1/2" AIR SPACE BEHIND BRICK.
5. CONTRACTOR SHALL INSTALL 2-1/2" HIGH QUADRO-VENT (OR APPROVED EQUAL) IN PLACE OF VERTICAL MORTAR JOINT, COLOR TO MATCH MORTAR, FOR WEEP HOLES. CONTRACTOR SHALL INSTALL WEEP HOLES AT 2' O.C. AT TOP AND BOTTOM ROWS OF BRICK FACE, TOP AND BOTTOM WEEP HOLES SHALL BE HORIZONTAL OFFSET OF 1' O.C.
6. ALL EXPOSED CONCRETE WALL SURFACES SHALL RECEIVE RUB FINISH.
7. CONTRACTOR SHALL WEATHER SEAL BRICK WITH SLOXANE WB CONCENTRATE, OR APPROVED EQUAL. APPLY PER MANUFACTURERS INSTRUCTIONS.
8. CONTRACTOR SHALL WATERPROOF BACKSIDE OF WALLS AND COLUMNS TO RECEIVE BACKFILL.



NOTES: CONTROL JOINT TO BE SPACED @ 20'-0" MAX ON ALL VERTICAL WALLS AND TO MATCH INTO JOINTS OF CONNECTED CONCRETE PAVEMENT SURFACES.



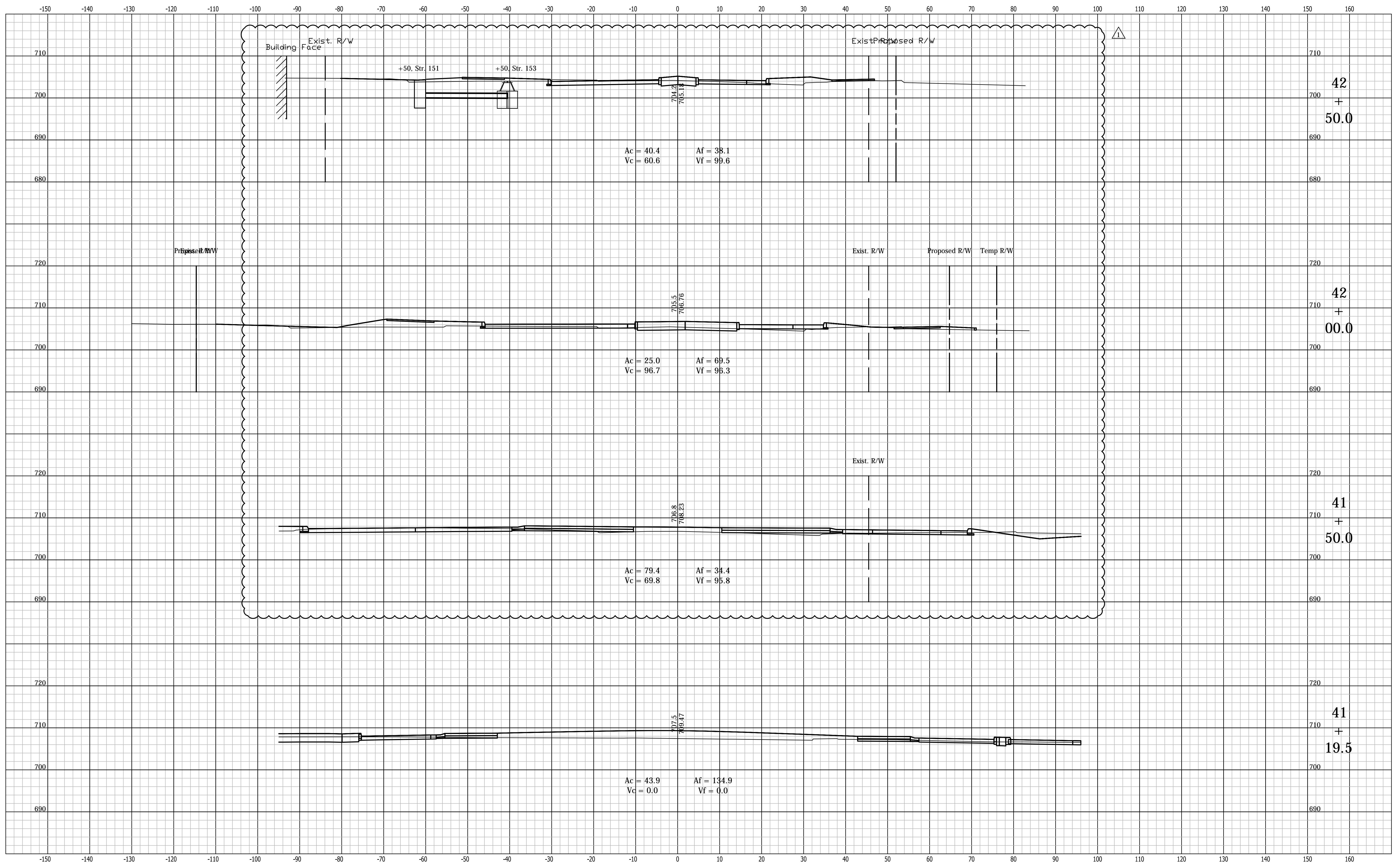
WALL SECTION DETAIL 4 NOT TO SCALE

TYPICAL WALL CONTROL JOINT DETAIL 7 NOT TO SCALE

UPPER COLUMN WITH PRECAST PLANTER 2 NOT TO SCALE

LOWER COLUMN 1 NOT TO SCALE

BILLC - 1/27/2016 9:59 AM - P:\C3D\14-416\Road\Dwg\Plans\X-Sections.dwg



1625 N. Post Road
 Indianapolis, IN 46219
 Phone 317-895-2585
 Fax 317-895-2596
 www.ucindy.com

Revised cross sections

CITY OF SOUTH BEND, INDIANA
 ROUNDABOUT INTERSECTION AT
 MARION, MICHIGAN, & MAIN STREETS

CROSS SECTIONS
 LINE "PR-B1"

REVISIONS	HORIZONTAL SCALE 1"=10'	PROJECT NUMBER 114-035
DRAWN: JNII	VERTICAL SCALE 1"=10'	SHEETS
CHECKED: WRC	SURVEY BOOK	101 OF 107
	DATE / /	