

**UTILITIES**

<b>ELECTRIC</b> American Electric Power Transmission Electric 700 Morrison Road Gahanna, OH 432320 (614) 552-1893 Contact: Barbara Dunlap  MCI/Verizon 730 W. Henry Street Indianapolis, IN 46225 (317) 685-8050 Contact: Chris Fowler Infinity Fiber/Union Station/GAP 5520 W 76th Street Indianapolis, IN 46268 (317) 777-7583 Contact: Keith Hamm Windstream Communications 30486 E 400 N Strawn, IL 61775 (309) 838-0788 Contact: Jeff Taylor Indiana Michigan Power-Distribution Electric 2929 Lathrop Street South Bend, IN 46628 (574) 236-1658 Contact: Antonio Macias	<b>TELEPHONE/COMMUNICATIONS</b> Level 3 Communications 1025 Eldorado Blvd. Broomfield, CO 80021 (720) 888-7280 Contact: Michael Karacson  Sprint 400 W Grand Ave. Elmhurst, IL 90216 (847) 737-1869 Contact: Gerry Crain Rogers Telecom 4804 N 40th Street Sheboygan, WI 53083 (920) 395-7125 Contact: Vicki Moran Zayo Bandwidth 1710 Directors Row Ft Wayne, IN 46808 (260) 570-5677 Contact: Jason Gilpin	<b>GAS &amp; PIPELINE</b> Qwest/CenturyLink 13057 S. Monitor Ave. Palos Heights, IL 60463 (708) 837-7927 Contact: Kevin Huff  NIPSCO 1039 Pennsylvania South Bend, IN 46601 (574) 284-2214 Contact: Phil Griffin  <b>CABLE/TV</b> Comcast 1920 McKinley Avenue Mishawaka, IN 46545 (847) 789-1039 ext. 71039 Contact: Jay Castello  <b>SANITARY SEWER/WATER</b> City of South Bend-Sanitary 227 W. Jefferson Blvd. South Bend, IN 46601 (574) 235-9251 Contact: Tony Mulnar City of South Bend-Water 209 N. Main Street South Bend, IN 46601 (574) 235-5633 Contact: Ed Herman  US Signal 7020 Southbelt Dr. SE Caledonia, MI 49315 (614) 483-6350 Contact: Rick Andricks
---	---	---

**GENERAL NOTES**

**	All earth shoulders, median areas, and cut and fill slopes shall be plain or mulch seeded except where sodding is specified
	Contractor shall verify existing flowline elevations to set the appropriate sump depth.

\*\* REPRESENTS GENERAL NOTES REQUIRED

**INDEX**

SHEET NO.	DRAWING INDEX
1	Title Sheet
2	Index and General Notes
3	Plan Index Location Maps
4	Witnesses and Benchmarks
5	Geometric Tie-Up Details
6-8	Maintenance of Traffic Details
9	Intersection Details - Main Street
10-11	Intersection Details - Michigan Street
12	Spot Elevation Details - Main Street
13	Spot Elevation Details - Michigan Street
14	Traffic Signal Detail - Main Street
15-16	Traffic Signal Details - Michigan Street
17-21	Pavement Marking & Signing Plans - Main Street
22-26	Pavement Marking & Signing Plans - Michigan Street
27	Erosion Control Table

**REVISIONS**

SHEET NO.	DATE	REVISED
1 3-1,8-1,8-2,8-3,8-4,8-5, 8-6,16-1,27-1	1/15/2016	Added Sheets for Addition of Milling & Resurfacing of Pavement
2 2,8-27	1/15/2016	Revised Detail, Pavement Marking & Signs
2 2,3-1,14,16-20,22-26	1/29/2016	Revised Pavement Marking & Signs
26-1	1/29/2016	Added Sheet; Sign Table

Indiana Professional  
Seal



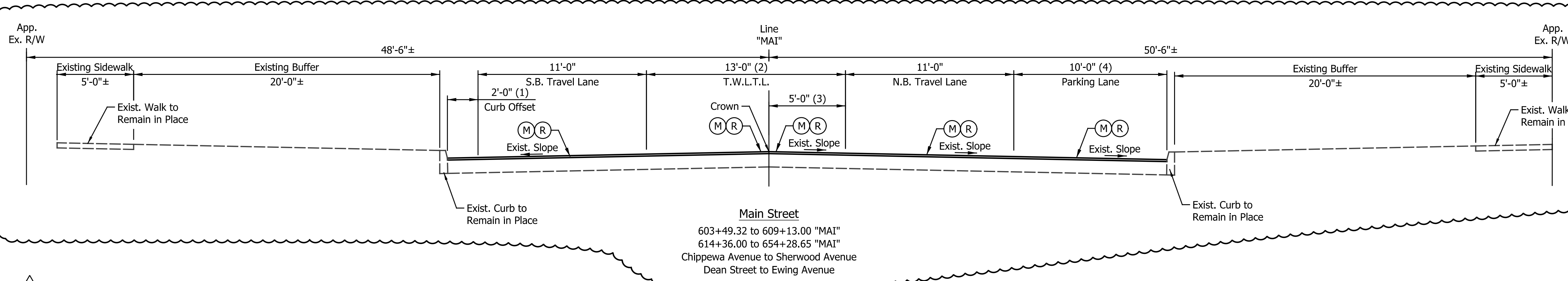
RECOMMENDED FOR APPROVAL	<i>Patrick Wooden</i> DESIGN ENGINEER	1/7/2016 DATE
DESIGNED: MRR	DRAWN: JRG	
CHECKED: PKW	CHECKED: PKW	

CITY OF SOUTH BEND

INDEX AND GENERAL NOTES

HORIZONTAL SCALE	BRIDGE FILE
N/A	N/A
VERTICAL SCALE	DESIGNATION
N/A	N/A
SURVEY BOOK	SHEETS
N/A	2 of 27
CONTRACT	PROJECT
N/A	115-019 (DIV A)

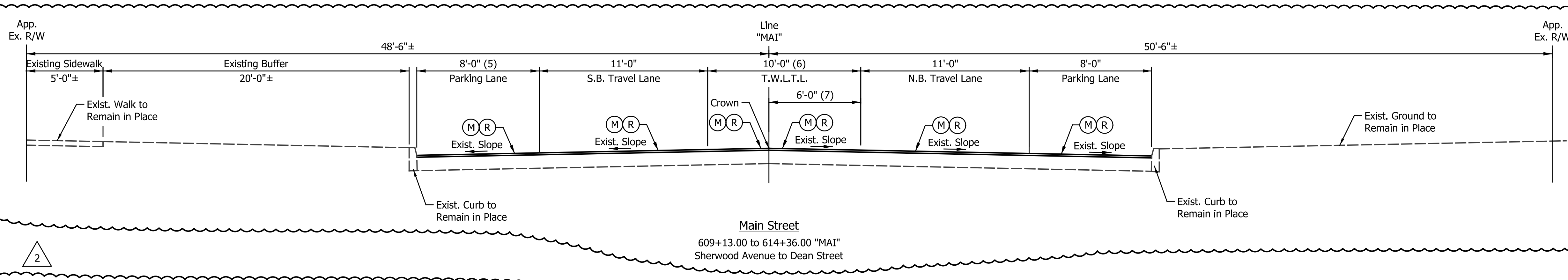
2



- (1) Varies 2'-0" to 8'-0" from 608+20.00 to 609+13.00 "MAI"
- (2) Varies 13'-0" to 10'-0" from 608+20.00 to 609+13.00 "MAI"  
Equals 11'-0" from 614+36.00 to 654+28.65 "MAI"
- (3) Equals 2'-0" from 614+36.00 to 654+28.65 "MAI"
- (4) Varies 10'-0" to 8'-0" from 608+20.00 to 609+13.00 "MAI"  
Equals 8'-0" from 614+36.00 to 654+28.65 "MAI"

**Main Street**  
 603+49.32 to 609+13.00 "MAI"  
 614+36.00 to 654+28.65 "MAI"  
 Chippewa Avenue to Sherwood Avenue  
 Dean Street to Ewing Avenue

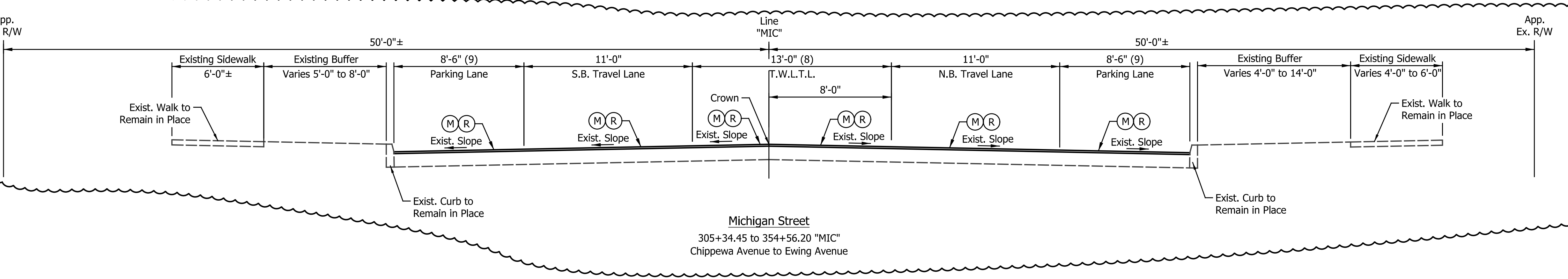
2



- (5) Varies 8'-0" to 2'-0" from 613+73.00 to 614+36.00 "MAI"
- (6) Varies 10'-0" to 11'-0" from 613+73.00 to 614+36.00 "MAI"
- (7) Varies 6'-0" to 2'-0" from 613+73.00 to 614+36.00 "MAI"

**Main Street**  
 609+13.00 to 614+36.00 "MAI"  
 Sherwood Avenue to Dean Street

2



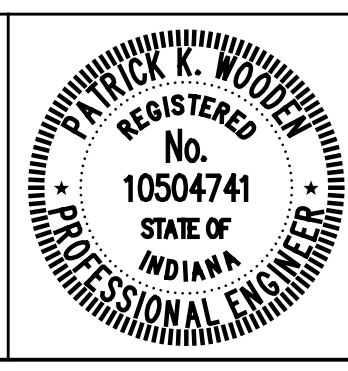
- (8) Varies 10'-0" to 13'-0" from 305+34.45 to 306+00.00 "MIC"  
Equals 11'-0" from 328+19.00 to 331+04.00 "MIC"
- (9) Equals 10'-0" from 305+34.45 to 314+16.00 "MIC"  
Varies from 10'-0" to 8'-6" from 314+16.00 to 314+61.00 "MIC"

**Michigan Street**  
 305+34.45 to 354+56.20 "MIC"  
 Chippewa Avenue to Ewing Avenue

**LEGEND**

- (M) Milling, Asphalt, 1.5"
- (R) 165 #/Syd QC/QA-HMA, 4, 76, Surface, 9.5 mm

DATE	REVISION
1/15/2016	REV 1: Added Sheet
1/29/2016	REV 2: Adjustments for Consistency



RECOMMENDED FOR APPROVAL	<i>Patrick Woodson</i>	1/15/2016
DESIGNED: MRR	DRAWN: MRR	DATE
CHECKED: PKW	CHECKED: PKW	

**CITY OF SOUTH BEND**

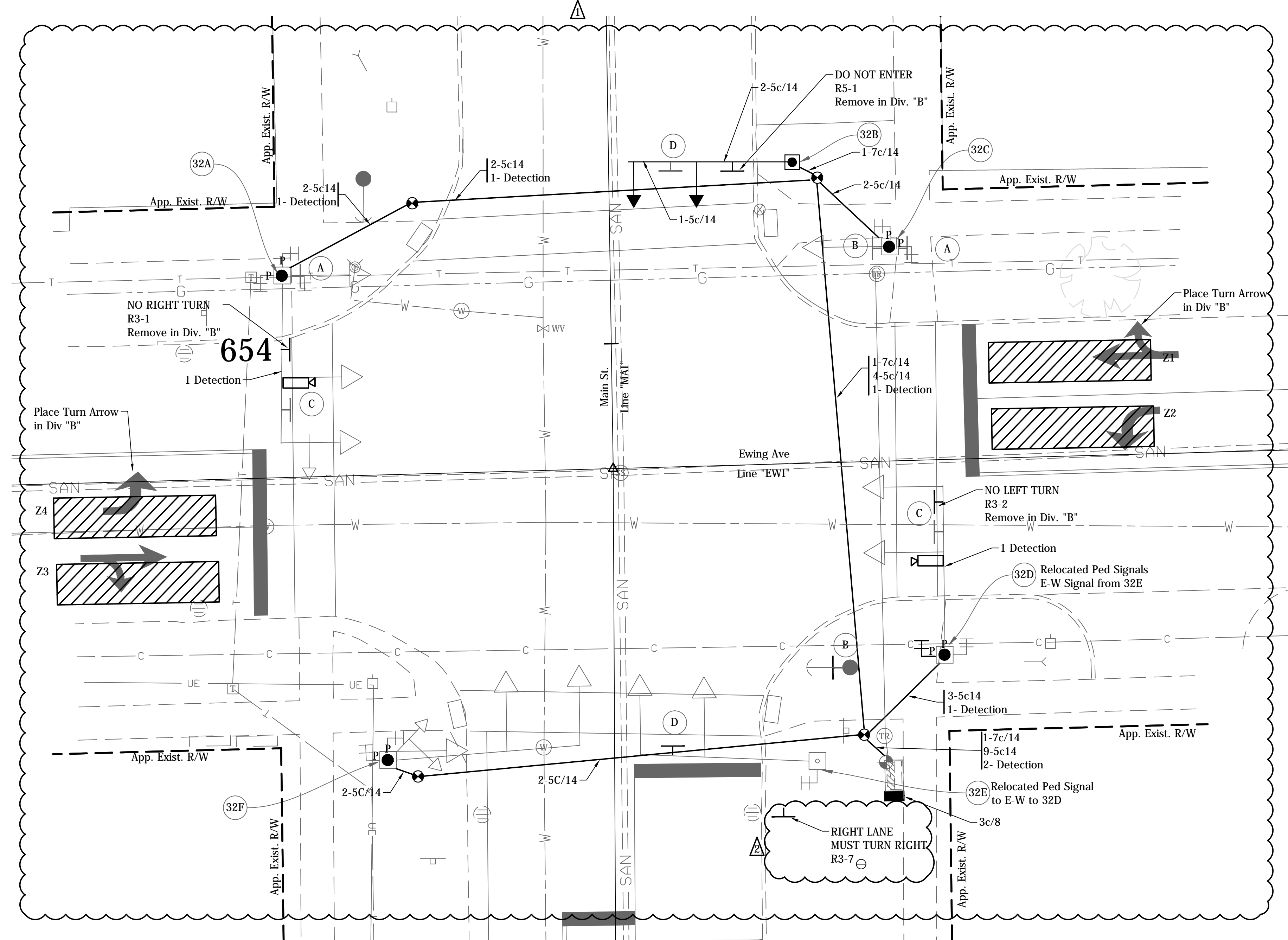
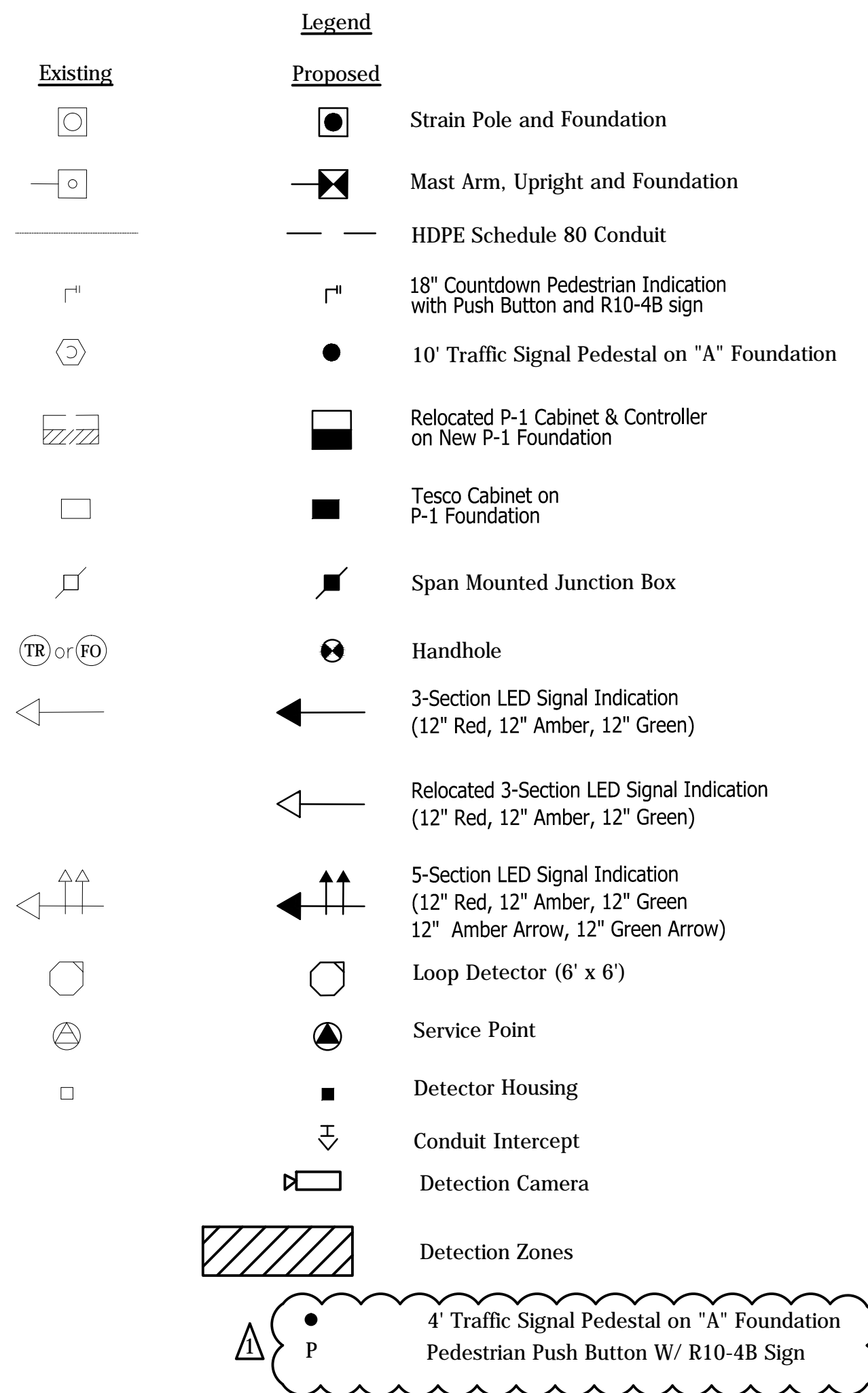
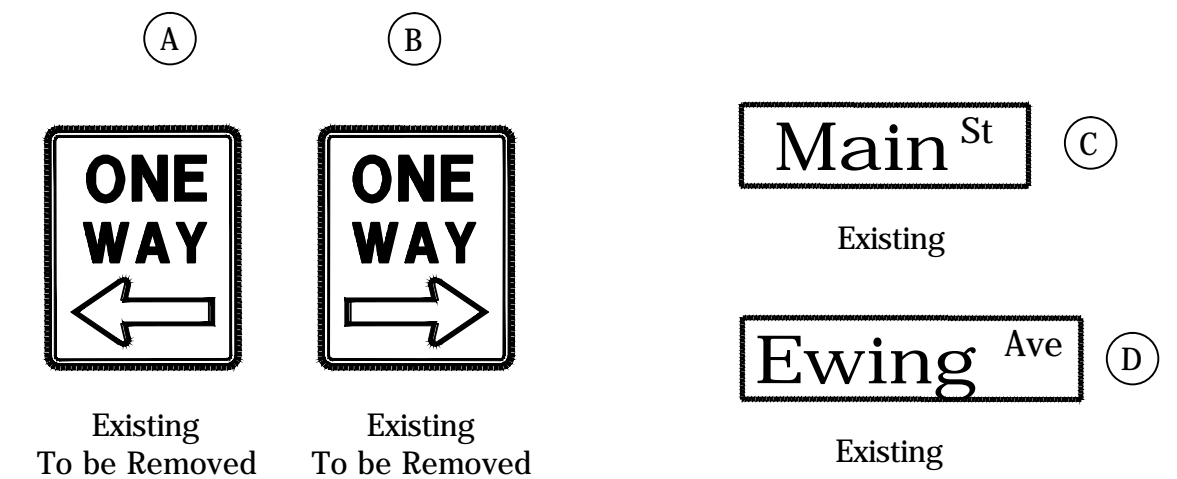
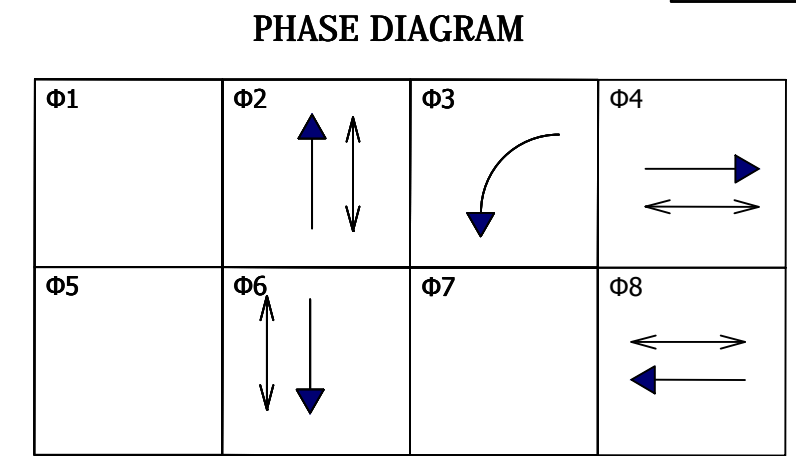
**TYPICAL CROSS SECTIONS  
 MAIN AND MICHIGAN STREETS**

HORIZONTAL SCALE	BRIDGE FILE
1/4" = 1'-0"	N/A
VERTICAL SCALE	DESIGNATION
N/A	N/A
SURVEY BOOK	SHEETS
N/A	3-1 of 27
CONTRACT	PROJECT
N/A	115-019 (DIV A)

Inch-Peak/Inch  
Indiana\_Sheets.dwg

**Signal Supports**

- 32A To Remain
- 32B Relocated From 32E
- 32C To Remain
- 32D To Remain
- 32E Relocate to 32B
- 32F To Remain



Detection Zone

Zone	Phase	Delay
Z1	8	5 Sec.
Z2	8	5 Sec.
Z3	4	5 Sec.
Z4	4	5 Sec.

- Detection Notes:
- (1) All Detection Zones Shall be 6'x25' (min.) and Shall Provide Presence Detection.
  - (2) Detection Cabling Denotes Hybrid Coax/Power Cable Connecting Detection Cameras to in Cabinet Equipment

- General Notes:
1. Pavement markings and intersection dimensions are shown here for informational purposes only. See applicable sheets for construction details.
  2. Location and type of underground traffic signal equipment and signal cable has been assumed based on field reviews. Existing signal cable is shown for the purpose of construction sequencing only. Contractor shall field verify the location and type of existing traffic signal equipment and cable as necessary.
  3. Remove existing signal equipment as noted. Foundations shall be removed to two feet below finished grade. Hand hole removal shall be performed in a manner that allows the signal to remain operable. Signal conduit that is no longer in use shall be abandoned in place with existing wiring removed.
  4. Contractor shall coordinate with local power company regarding location of power feed to new service pedestal. 3" conduit shall carry the power feed between the service point and the service pedestal.
  5. Proposed mast arm foundations, pedestal foundations and cabinet footpads shall be constructed with a finished surface that is flush with the proposed sidewalk.
  6. Existing & proposed mast arms, pedestal poles and controller cabinets shall be painted black (FS 17038).
  7. Salvaged equipment shall be delivered to the City at the following address: 731 S Lafayette Blvd, South Bend, IN 46601
  8. EMNET equipment is mounted to various traffic signal equipment within the project limits. The contractor shall contact Jeromy Slater of EMNET at (574) 387-9387 to arrange for pickup of any EMNET equipment removed as part of traffic signal equipment removal.
  9. Replace Hand Hole Covers on Existing Mast Arms as Necessary.
  10. All Conduit Under Pavement Shall Utilize the Directional Bore Method for Installation.

DATE	REVISION
1/15/2016	Rev 1: Add Pedestrian & Push Button & Conduit & Revised Gen Notes
1/29/2016	Rev 2: Revise Sign Callouts

**CITY OF SOUTH BEND**

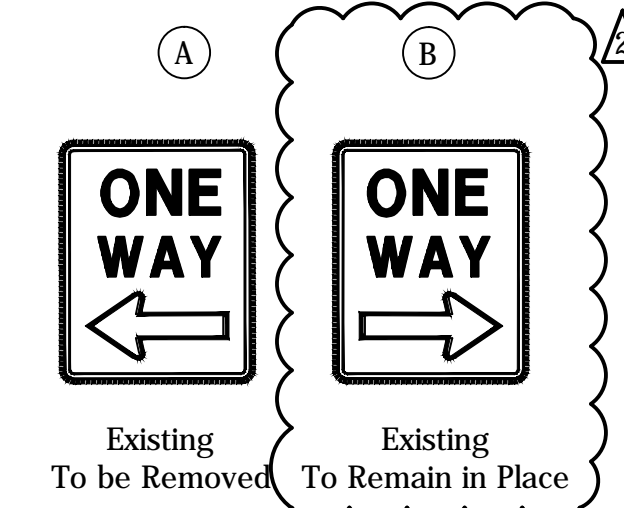
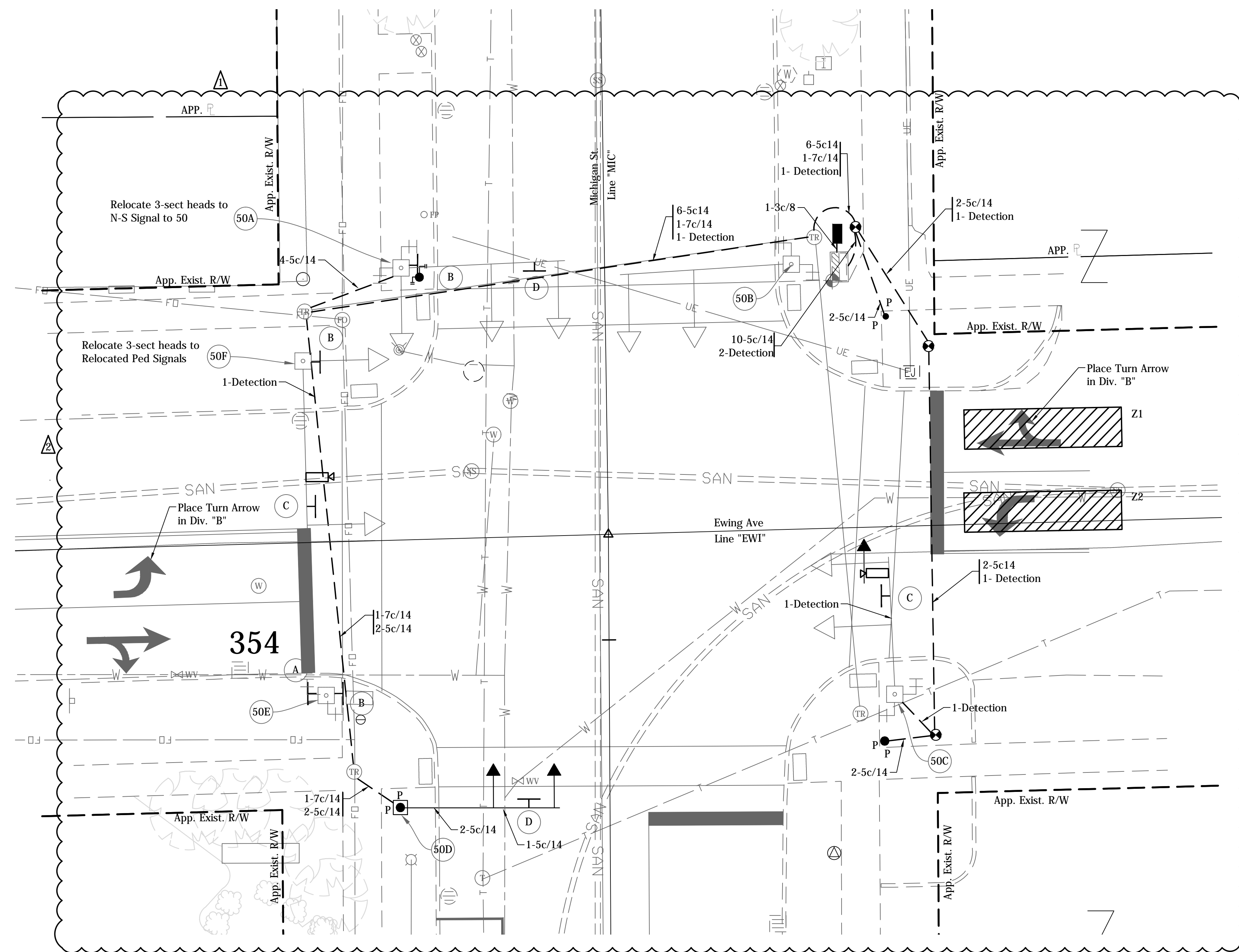
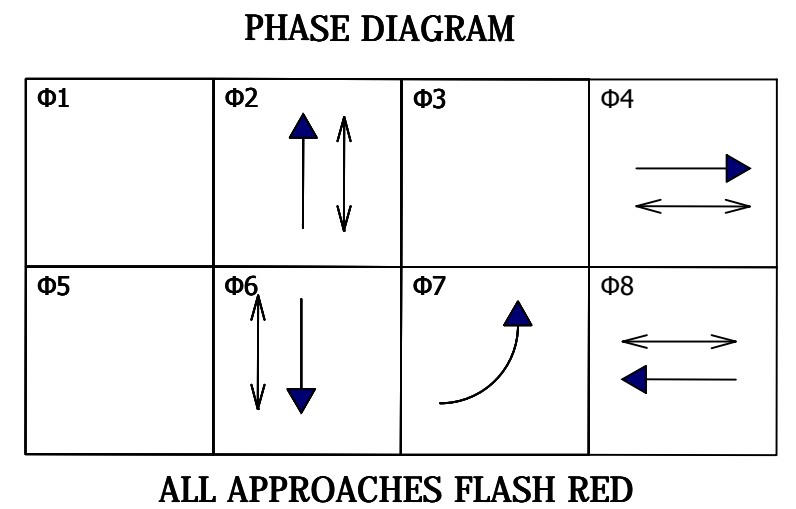
DESIGNER	DATE:	
DESIGN ENG. <i>Harry Fox</i>	DATE: 01/07/2016	
<b>TRAFFIC SIGNAL DETAIL MAIN ST &amp; EWING AVE</b>		
CONTRACT NO. N/A	DRAWN BY BRD	SCALE: 1" = 10'
		YEAR SHEET TOTAL 2016 14 27
<b>COMM. NO. N/A</b>	DES. NO. N/A	PROJECT NO. 115-019 (DIV A)

DIRECTORY: F:\2015\15-3329 South Bend 2-Way Conversion\DRAWINGS\SIGNAL DETAILS\SIGNAL Plans South\...  
 FILE: ...15-3329 Signal Plans south main and ewing.dwg  
 DMSCALE: 1" = 100'-0" (1/8" = 10'-0")  
 DATE: 01/07/2016 5:09pm



**Signal Supports**

- 50A Relocate to 50D
- 50B To Remain
- 50C To Remain
- 50D Relocated From 50A
- 50E To Remain
- 50F To Remain



**Legend**

- |  |  |  |  |
|--|--|--|--|
|  | Existing   |  | Proposed   |
|  | Strain Pole and Foundation   |  | Mast Arm, Upright and Foundation   |
|  | HDPE Schedule 80 Conduit   |  | 18" Countdown Pedestrian Indication with Push Button and R10-4B sign                             |
|  | 10' Traffic Signal Pedestal on "A" Foundation                                      |  | Relocated P-1 Cabinet & Controller on New P-1 Foundation   |
|  | Tesco Cabinet on P-1 Foundation  |  | Span Mounted Junction Box  |
|  | Handhole   |  | 3-Section LED Signal Indication (12" Red, 12" Amber, 12" Green)                                  |
|  | Relocated 3-Section LED Signal Indication (12" Red, 12" Amber, 12" Green)          |  | 5-Section LED Signal Indication (12" Red, 12" Amber, 12" Green 12" Amber Arrow, 12" Green Arrow) |
|  | Loop Detector (6' x 6')  |  | Service Point  |
|  | Detector Housing   |  | Conduit Intercept  |
|  | Detection Camera   |  | Detection Zones  |
|  | 4' Traffic Signal Pedestal on "A" Foundation Pedestrian Push Button W/ R10-4B Sign |  |  |

Detection Zone

Zone	Phase	Delay
Z1	8	5 Sec.
Z2	4	5 Sec.

Detection Notes:  
 (1) All Detection Zones Shall be 6'x25' (min.) and Shall Provide Presence Detection.  
 (2) Detection Cabling Denotes Hybrid Coax/Power Cable Connecting Detection Cameras to in Cabinet Equipment

**General Notes:**

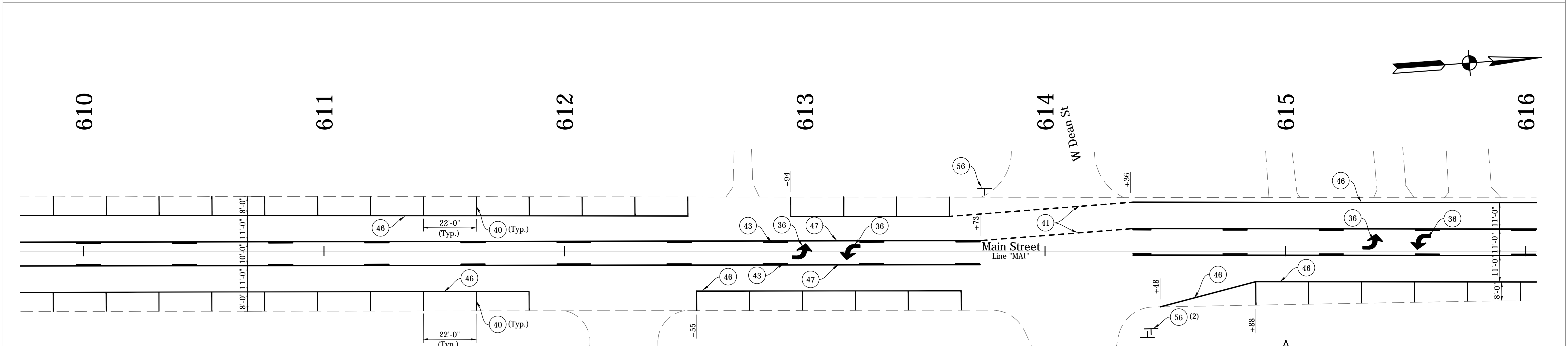
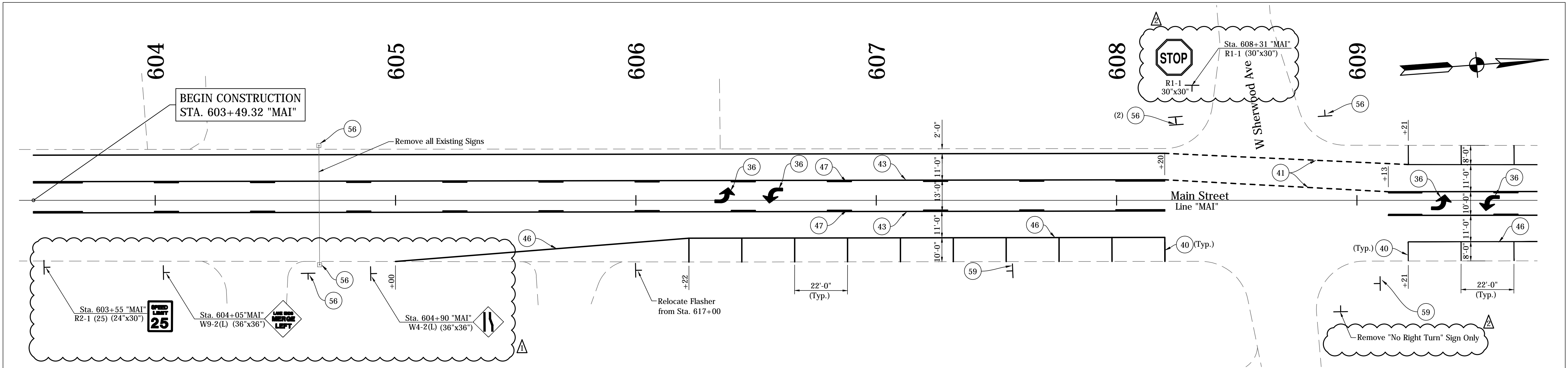
- Pavement markings and intersection dimensions are shown here for informational purposes only. See applicable sheets for construction details.
- Location and type of underground traffic signal equipment and signal cable has been assumed based on field reviews. Existing signal cable is shown for the purpose of construction sequencing only. Contractor shall field verify the location and type of existing traffic signal equipment and cable as necessary.
- Remove existing signal equipment as noted. Foundations shall be removed to two feet below finished grade. Hand hole removal shall be performed in a manner that allows the signal to remain operable. Signal conduit that is no longer in use shall be abandoned in place with existing wiring removed.
- Contractor shall coordinate with local power company regarding location of power feed to new service pedestal. 3" conduit shall carry the power feed between the service point and the service pedestal.
- Proposed mast arm foundations, pedestal foundations and cabinet foot pads shall be constructed with a finished surface that is flush with the proposed sidewalk.
- Existing & proposed mast arms, pedestal poles and controller cabinets shall be painted black (FS 17038).
- Salvaged signal equipment shall be delivered to the City at the following address: 731 S Lafayette Blvd, South Bend, IN 46601
- EMNET equipment is mounted to various traffic signal equipment within the project limits. The contractor shall contact Jeremy Slater of EMNET at (574) 387-9387 to arrange for pickup of any EMNET equipment removed as part of traffic signal equipment removal.
- Replace Hand Hole Covers on Existing Mast Arms as Necessary.
- All Conduit Under Pavement Shall Utilize the Directional Bore Method for Installation.

DATE	REVISION
1/15/2016	Rev 1: Add Pedestrian & Push Button & Conduit & Revised Gen Notes
1/15/2016	Rev 2: Removed Overhead Signs & Revise Sign Call Out

**CITY OF SOUTH BEND**

DESIGNER	DATE:	
DESIGN ENG. <i>Harry Fox</i>	DATE: 01/07/2016	
<b>TRAFFIC SIGNAL DETAIL</b>		
<b>MICHIGAN ST &amp; EWING AVE</b>		
CONTRACT NO. N/A	DRAWN BY BRD	SCALE: 1" = 10'
		YEAR SHEET TOTAL
		2016 16 27
<b>COMM. NO. N/A</b>	DES. NO. N/A	PROJECT NO. 115-019 (DIV A)

DIRECTORY: F:\2015\15-1329 South Bend 2-Way Conversion\DRAWINGS\SIGNAL DETAILS\SIGNAL Plans South\...  
 FILE: ...15-1329 Signal Plans south.dwg  
 DMSCALE: 1" = 100'  
 PLOTTED BY: ...  
 DATE: ... 2016 - 4:54pm



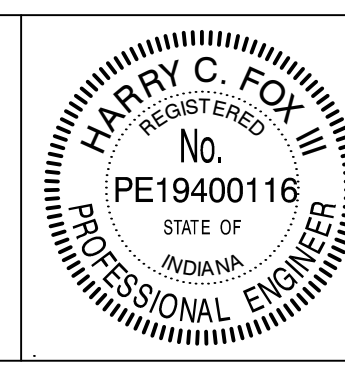
**LEGEND**

- (34) Pavement Message Markings, Thermoplastic, Bike Symbol, 72 in.
- (35) Pavement Message Markings, Thermoplastic, Arrow, 72 in.
- (36) Pavement Message Markings, Thermoplastic, Lane Indication Arrow
- (38) Transverse Markings, Thermoplastic, Stop Line, White, 24 in.
- (40) Parallel Parking Spaces, See Detail
- (41) Line, Thermoplastic, Dotted, White, 6 in. (2' Line, 2' Gap)
- (43) Line, Thermoplastic, Broken, Yellow, 4 in.
- (45) Line, Thermoplastic, Solid, White, 6 in.
- (46) Line, Thermoplastic, Solid, White, 4 in.
- (47) Line, Thermoplastic, Solid, Yellow, 4 in.
- (55) Pavement Message Markings, Thermoplastic, Share the Road
- (56) Sign, Sheet, and Supports, Remove
- (58) Sign, Sheet, Relocate
- (59) Sign, Sheet, Remove & Reset
- (72) Transverse Markings, Thermoplastic, Crosswalk Line, White, 6 in.

**NOTES:**  
 See Traffic Signal Detail Sheets For Additional Signage on Signal Poles.  
 Existing Signs to Remain in Place, Unless Otherwise Noted.  
 All Stationing Described from Line "MAI", Except as Noted.

DIRECTORY: F:\2015\15-3329 South Bend 2-Way Conversion\DRAWINGS\PAVEMENT MARKING\PM South\  
 FILE: .....15-3329 PM Main at.dwg  
 DIMSCALE: 1/8"=1'-0"  
 PLOTTED BY: JG  
 DATE: 1/29/2016 4:54pm

DATE	REVISION
1/15/2016	Rev 1: Revise Legend & Add Signs
1/29/2016	Rev 2: Revise Legend & Add Note to Signs

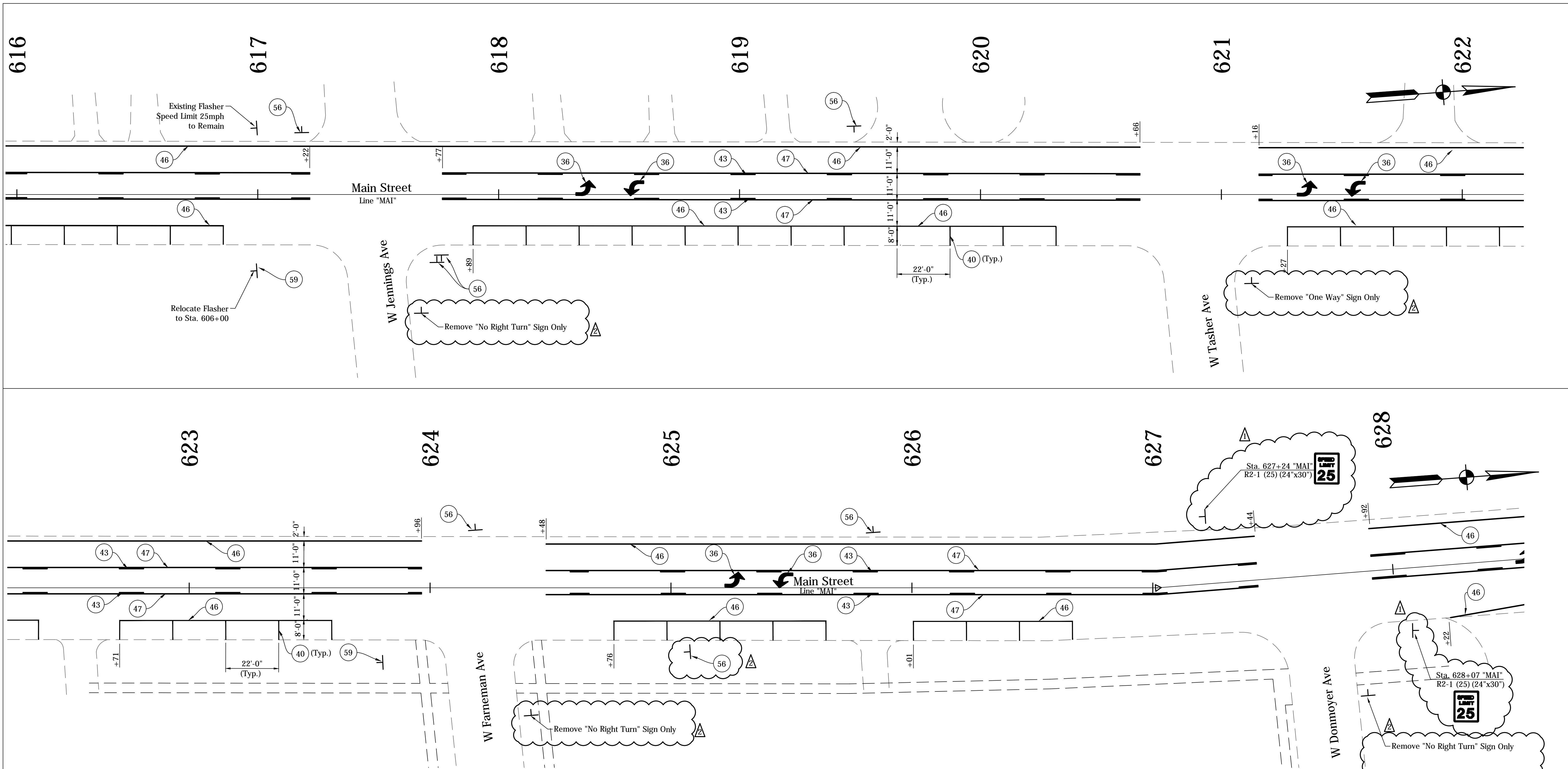


RECOMMENDED FOR APPROVAL	<i>Harry Fox</i>	DESIGN ENGINEER	01/07/2016	DATE
DESIGNED:	HCF III	DRAWN:	BRD	
CHECKED:	JG	CHECKED:	JG	

**CITY OF SOUTH BEND**  
**PAVEMENT MARKINGS & SIGNING DETAILS**  
**MAIN STREET**

HORIZONTAL SCALE	BRIDGE FILE
1" = 20'	N/A
VERTICAL SCALE	DESIGNATION
N/A	N/A
SURVEY BOOK	SHEETS
N/A	17 of 27
CONTRACT	PROJECT
N/A	115-019 (DIV A)



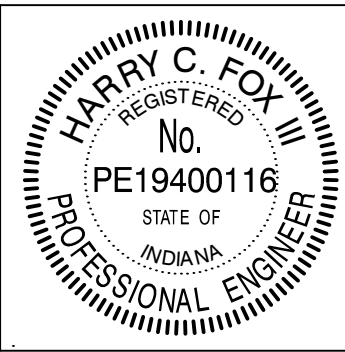


NOTES:  
 See Traffic Signal Detail Sheets For Additional Signage on Signal Poles.  
 Existing Signs to Remain in Place, Unless Otherwise Noted.  
 All Stationing Described from Line "MAI", Except as Noted.

- LEGEND**
- 34 Pavement Message Markings, Thermoplastic, Bike Symbol, 72 in.
  - 35 Pavement Message Markings, Thermoplastic, Arrow, 72 in.
  - 36 Pavement Message Markings, Thermoplastic, Lane Indication Arrow
  - 38 Transverse Markings, Thermoplastic, Stop Line, White, 24 in.
  - 40 Parallel Parking Spaces, See Detail
  - 41 Line, Thermoplastic, Dotted, White, 6 in. (2' Line, 2' Gap)
  - 43 Line, Thermoplastic, Broken, Yellow, 4 in.
  - 45 Line, Thermoplastic, Solid, White, 6 in.
  - 46 Line, Thermoplastic, Solid, White, 4 in.
  - 47 Line, Thermoplastic, Solid, Yellow, 4 in.
  - 55 Pavement Message Markings, Thermoplastic, Share the Road
  - 56 Sign, Sheet, and Supports, Remove
  - 58 Sign, Sheet, Relocate
  - 59 Sign, Sheet, Remove & Reset
  - 72 Transverse Markings, Thermoplastic, Crosswalk Line, White, 6 in.

DIRECTORY: F:\2016\15-3329 South Bend 2-Way Conversion\DRAWINGS\PAVEMENT MARKINGS\PM\_South\  
 FILE: 15-3329 PM Main at 4Wg  
 DIMSCALE: 1"=20'  
 PLOTTED BY: Bburson  
 DATE: 01/29/2016 4:55pm

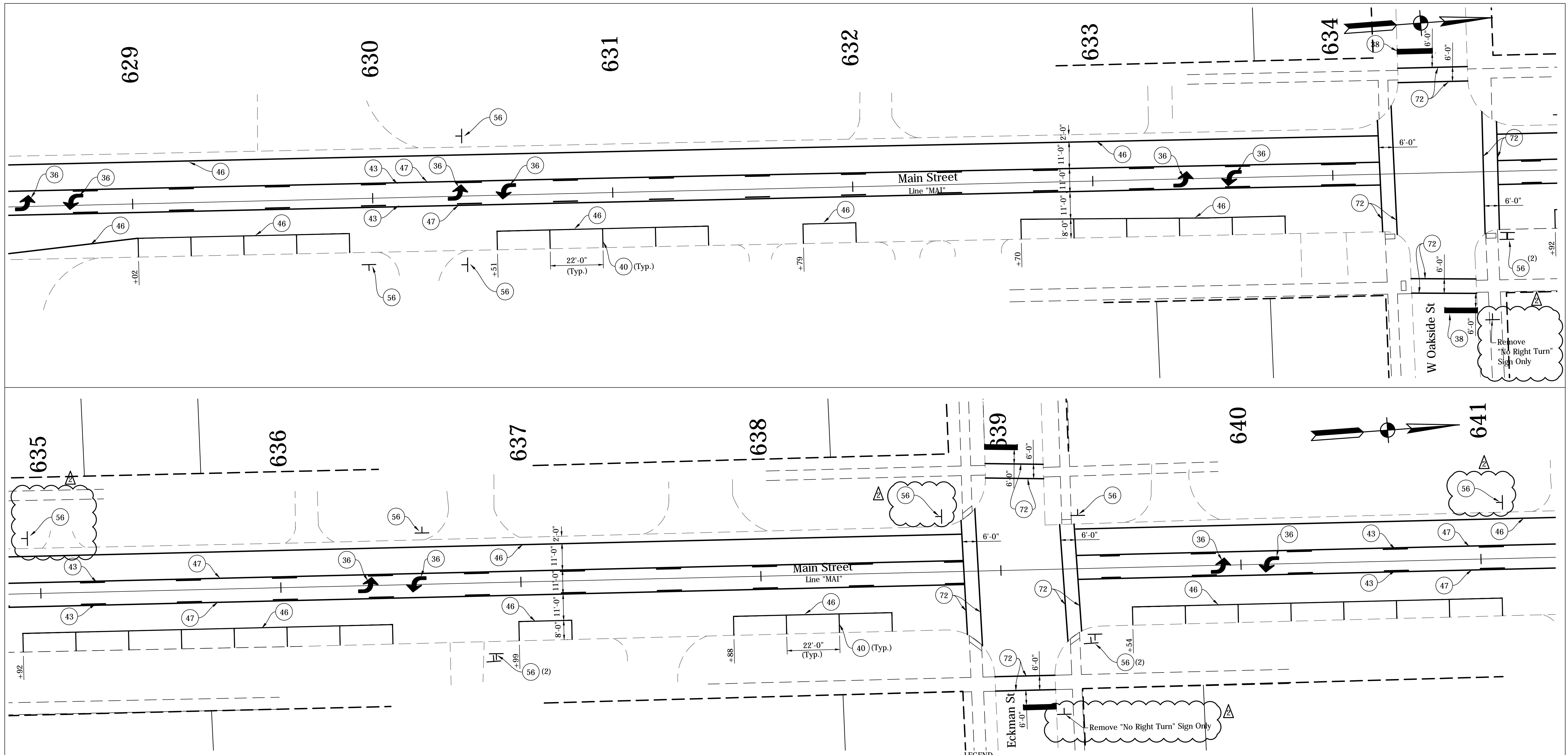
DATE	REVISION
1/15/2016	Rev 1: Revise Legend & Add Signs
1/29/2016	Rev 2: Revise Legend & Add Note to Signs



RECOMMENDED FOR APPROVAL	<i>Harry Fox</i>	01/07/2016
DESIGNED:	HCF III	DRAWN:
CHECKED:	JG	CHECKED:
		BRD
		JG

**CITY OF SOUTH BEND**  
  
**PAVEMENT MARKINGS & SIGNING DETAILS**  
  
**MAIN STREET**

HORIZONTAL SCALE	BRIDGE FILE
1" = 20'	N/A
VERTICAL SCALE	DESIGNATION
N/A	N/A
SURVEY BOOK	SHEETS
N/A	18 of 27
CONTRACT	PROJECT
N/A	115-019 (DIV A)



**NOTES:**

See Traffic Signal Detail Sheets For Additional Signage on Signal Poles.

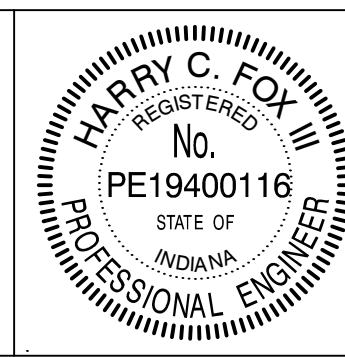
Existing Signs to Remain in Place, Unless Otherwise Noted.

All Stationing Described from Line "MAI", Except as Noted.

- |  |   |
|--|---|
| (34) Pavement Message Markings, Thermoplastic, Bike Symbol, 72 in.   | (45) Line, Thermoplastic, Solid, White, 6 in.                         |
| (35) Pavement Message Markings, Thermoplastic, Arrow, 72 in.         | (46) Line, Thermoplastic, Solid, White, 4 in.                         |
| (36) Pavement Message Markings, Thermoplastic, Lane Indication Arrow | (47) Line, Thermoplastic, Solid, Yellow, 4 in.                        |
| (38) Transverse Markings, Thermoplastic, Stop Line, White, 24 in.    | (55) Pavement Message Markings, Thermoplastic, Share the Road         |
| (40) Parallel Parking Spaces, See Detail                             | (56) Sign, Sheet, and Supports, Remove                                |
| (41) Line, Thermoplastic, Dotted, White, 6 in. (2' Line, 2' Gap)     | (58) Sign, Sheet, Relocate  |
| (43) Line, Thermoplastic, Broken, Yellow, 4 in.                      | (59) Sign, Sheet, Remove & Reset                                      |
|  | (72) Transverse Markings, Thermoplastic, Crosswalk Line, White, 6 in. |

DIRECTORY: F:\2016\15-3329 South Bend 2-Way Conversion\DRAWINGS\PAVEMENT MARKINGS\PM\_South\  
 FILE: 15-3329 PM Main at 4WY  
 DIMSCALE: 1"=20'  
 PLOTTED BY: Bburson  
 DATE: 1/29/2016 4:55pm

DATE	REVISION
1/15/2016	Rev 1: Revise Legend
1/29/2016	Rev 2: Revise Legend & Add Note to Signs

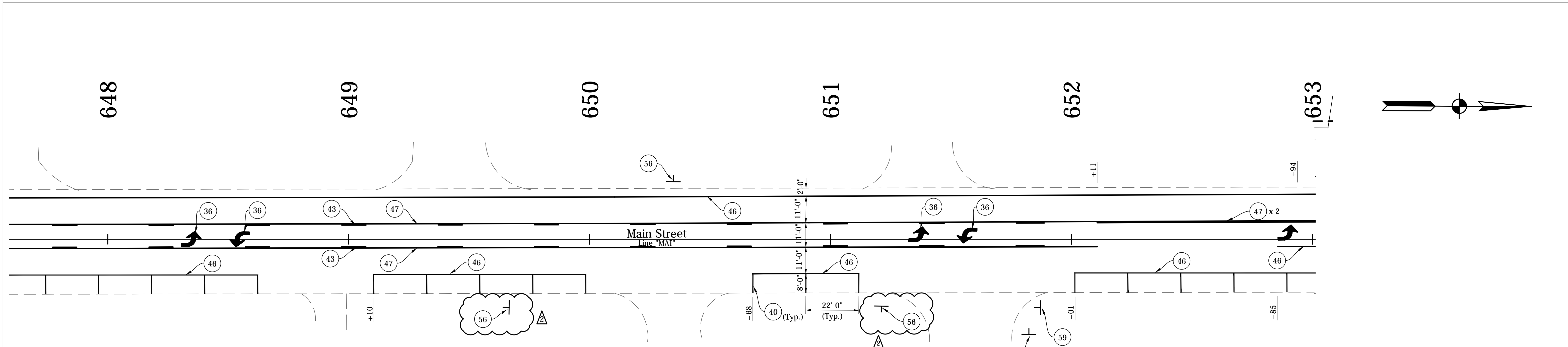
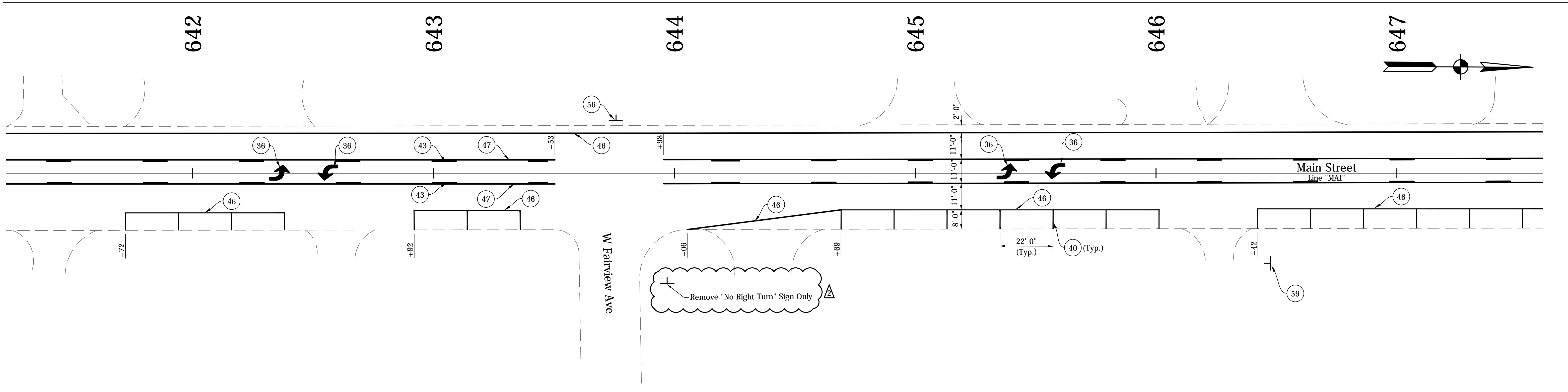


RECOMMENDED FOR APPROVAL	<i>Harry Fox</i>	DESIGN ENGINEER	01/07/2016	DATE
DESIGNED:	HCF III	DRAWN:	BRD	
CHECKED:	JG	CHECKED:	JG	

**CITY OF SOUTH BEND**  
  
**PAVEMENT MARKINGS & SIGNING DETAILS**  
  
**MAIN STREET**

HORIZONTAL SCALE	BRIDGE FILE
1" = 20'	N/A
VERTICAL SCALE	DESIGNATION
N/A	N/A
SURVEY BOOK	SHEETS
N/A	19 of 27
CONTRACT	PROJECT
N/A	115-019 (DIV A)

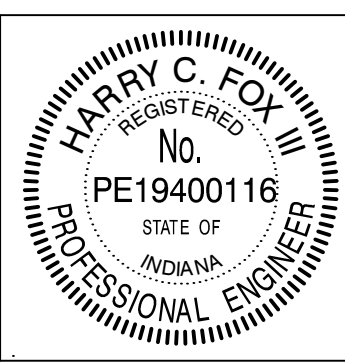
DIRECTORY: F:\2016\15-3329 South Bend 2-Way Conversion\DRAWINGS\PAVEMENT MARKING\PM South\  
 FILE: 15-3329 PM Main at 4W  
 DIMSCALE: 1"=20'  
 PLOTTED BY: JG  
 DATE: 01/29/2016 4:55pm



**NOTES:**  
 See Traffic Signal Detail Sheets For Additional Signage on Signal Poles.  
 Existing Signs to Remain in Place, Unless Otherwise Noted.  
 All Stationing Described from Line "MAI". Except as Noted.

- LEGEND**
- (34) Pavement Message Markings, Thermoplastic, Bike Symbol, 72 in.
  - (35) Pavement Message Markings, Thermoplastic, Arrow, 72 in.
  - (36) Pavement Message Markings, Thermoplastic, Lane Indication Arrow
  - (38) Transverse Markings, Thermoplastic, Stop Line, White, 24 in.
  - (40) Parallel Parking Spaces, See Detail
  - (41) Line, Thermoplastic, Dotted, White, 6 in. (2' Line, 2' Gap)
  - (43) Line, Thermoplastic, Broken, Yellow, 4 in.
  - (45) Line, Thermoplastic, Solid, White, 6 in.
  - (46) Line, Thermoplastic, Solid, White, 4 in.
  - (47) Line, Thermoplastic, Solid, Yellow, 4 in.
  - (55) Pavement Message Markings, Thermoplastic, Share the Road
  - (56) Sign, Sheet, and Supports, Remove
  - (58) Sign, Sheet, Relocate
  - (59) Sign, Sheet, Remove & Reset
  - (72) Transverse Markings, Thermoplastic, Crosswalk Line, White, 6 in.

DATE	REVISION
1/15/2016	Rev 1: Revise Legend
1/29/2016	Rev 2: Revise Legend & Add Note to Sign



RECOMMENDED FOR APPROVAL	<i>Harry Fox</i>	DESIGN ENGINEER	01/07/2016	DATE
DESIGNED:	HCF III	DRAWN:	BRD	
CHECKED:	JG	CHECKED:	JG	

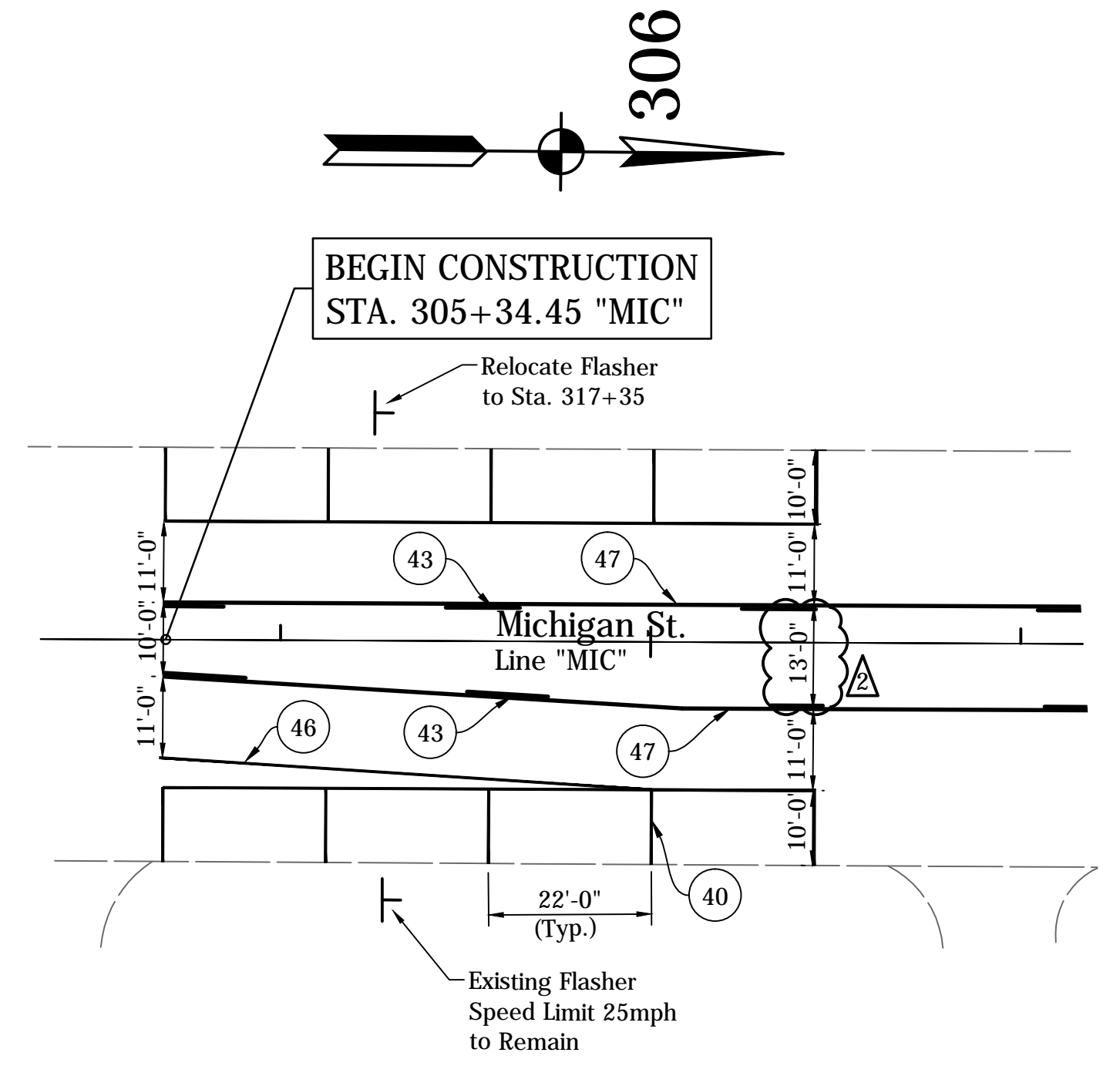
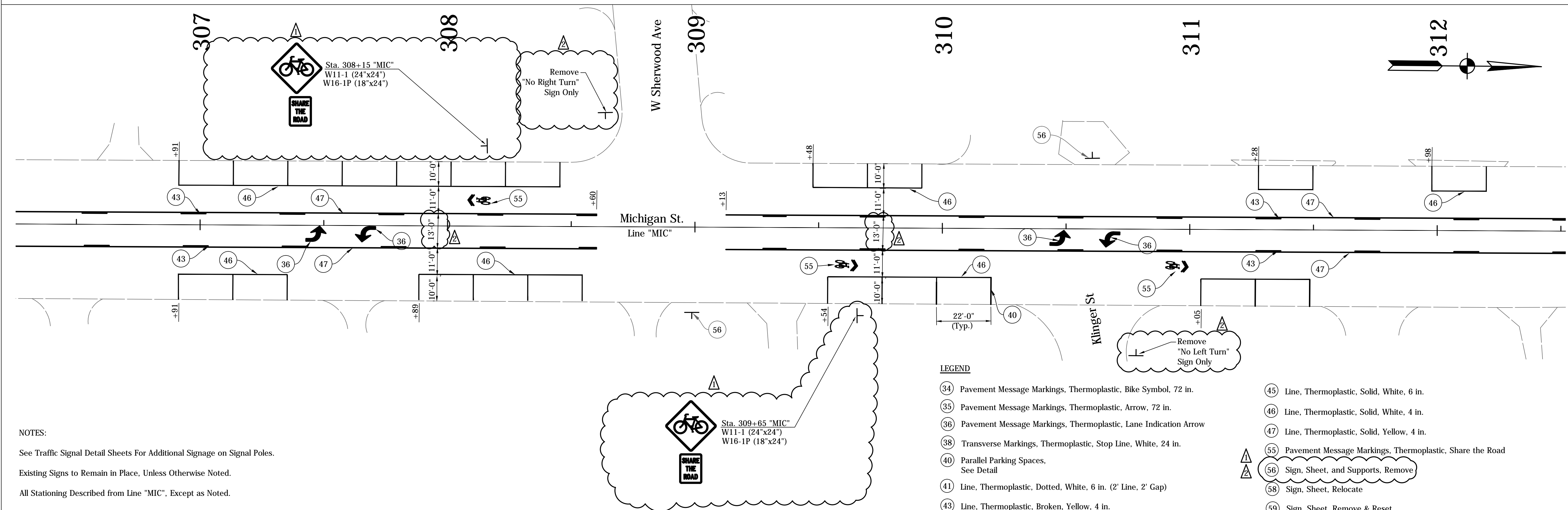
**CITY OF SOUTH BEND**  
  
**PAVEMENT MARKINGS & SIGNING DETAILS**  
  
**MAIN STREET**

HORIZONTAL SCALE	BRIDGE FILE
1" = 20'	N/A
VERTICAL SCALE	DESIGNATION
N/A	N/A
SURVEY BOOK	SHEETS
N/A	20 of 27
CONTRACT	PROJECT
N/A	115-019 (DIV A)



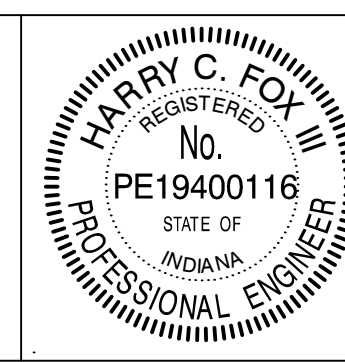
DIRECTORY: F:\2015\15-3329 South Bend 2-Way Conversion\DRAWINGS\PAVEMENT MARKING\PM\_South\  
 FILE: .....15-3329 PM Michigan at south.dwg  
 DIMSCALE: 1"=20'  
 PLOTTED BY: BOURZ  
 DATE: .....08/28/2016 - 4:56pm

**NOTES:**  
 See Traffic Signal Detail Sheets For Additional Signage on Signal Poles.  
 Existing Signs to Remain in Place, Unless Otherwise Noted.  
 All Stationing Described from Line "MIC", Except as Noted.



- LEGEND**
- 34 Pavement Message Markings, Thermoplastic, Bike Symbol, 72 in.
  - 35 Pavement Message Markings, Thermoplastic, Arrow, 72 in.
  - 36 Pavement Message Markings, Thermoplastic, Lane Indication Arrow
  - 38 Transverse Markings, Thermoplastic, Stop Line, White, 24 in.
  - 40 Parallel Parking Spaces, See Detail
  - 41 Line, Thermoplastic, Dotted, White, 6 in. (2' Line, 2' Gap)
  - 43 Line, Thermoplastic, Broken, Yellow, 4 in.
  - 45 Line, Thermoplastic, Solid, White, 6 in.
  - 46 Line, Thermoplastic, Solid, White, 4 in.
  - 47 Line, Thermoplastic, Solid, Yellow, 4 in.
  - 55 Pavement Message Markings, Thermoplastic, Share the Road
  - 56 Sign, Sheet, and Supports, Remove
  - 58 Sign, Sheet, Relocate
  - 59 Sign, Sheet, Remove & Reset
  - 72 Transverse Markings, Thermoplastic, Crosswalk Line, White, 6 in.

DATE	REVISION
1/15/2016	Rev 1: Revise Legend & Add Signs
1/29/2016	Rev 2: Revise Legend & Add Note to Signs & Lane Dimension

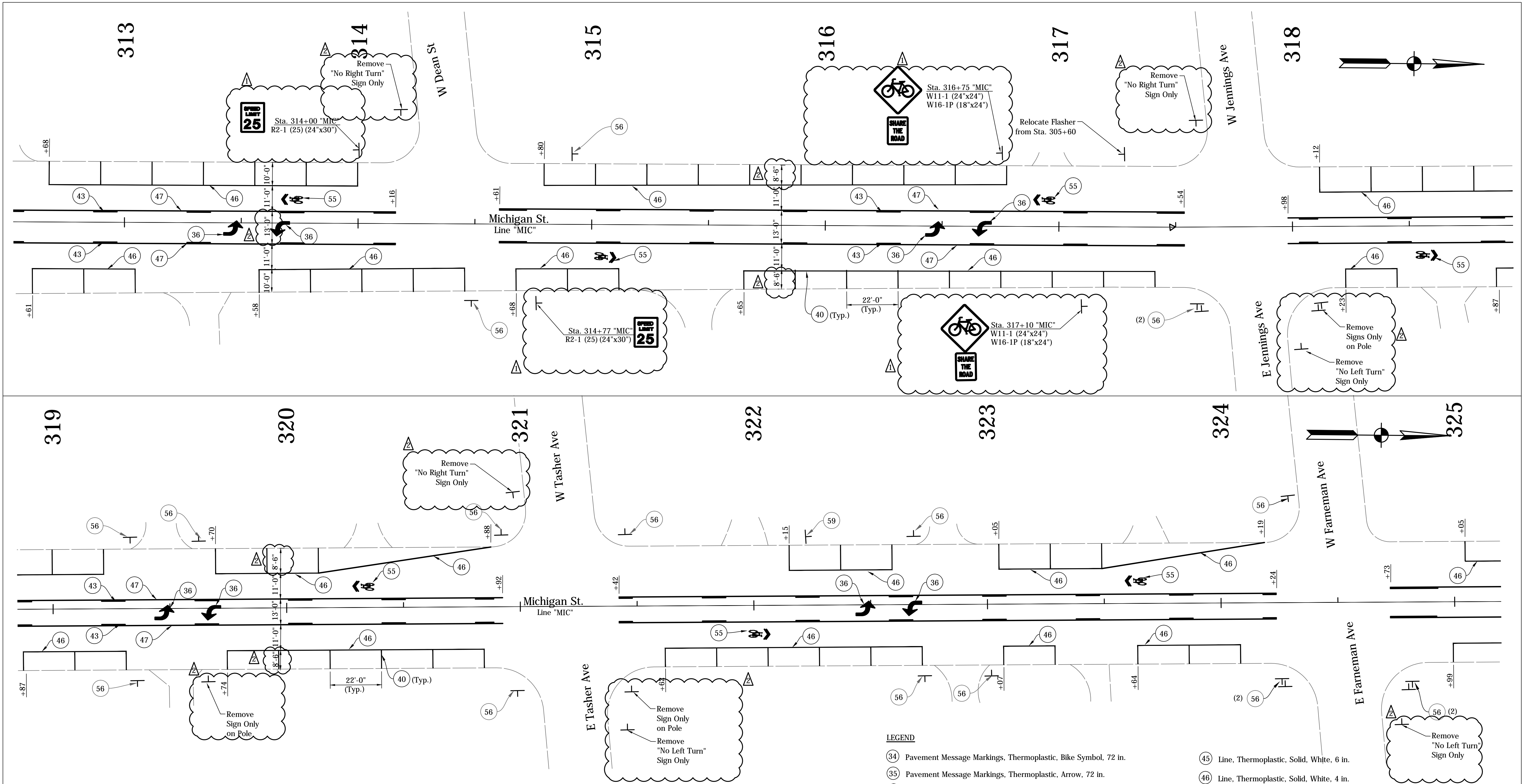


RECOMMENDED FOR APPROVAL	<i>Harry Fox</i>	DESIGN ENGINEER	01/07/2016	DATE
DESIGNED:	HCF III	DRAWN:	BRD	
CHECKED:	JG	CHECKED:	JG	

**CITY OF SOUTH BEND**  
**PAVEMENT MARKING & SIGNING DETAILS**  
**MICHIGAN STREET**

HORIZONTAL SCALE	BRIDGE FILE
1" = 20'	N/A
VERTICAL SCALE	DESIGNATION
N/A	N/A
SURVEY BOOK	SHEETS
N/A	22 of 27
CONTRACT	PROJECT
N/A	115-019 (DIV A)

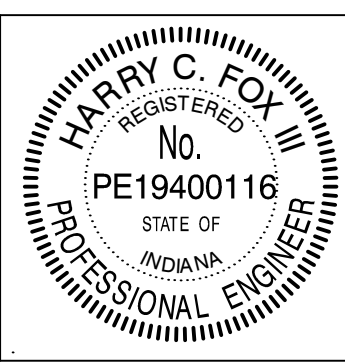
DIRECTORY: F:\2015\15-3329 South Bend 2-Way Conversion\DRAWINGS\PAVEMENT MARKING\PM\_South\  
 FILE: 15-3329 PM Michigan at south.dwg  
 DIMSCALE: 1/8"=1'-0"  
 PLOTTED BY: BOURZOG  
 DATE: 08/28/2016 4:56pm



**NOTES:**  
 See Traffic Signal Detail Sheets For Additional Signage on Signal Poles.  
 Existing Signs to Remain in Place, Unless Otherwise Noted.  
 All Stationing Described from Line "MIC", Except as Noted.

- LEGEND**
- (34) Pavement Message Markings, Thermoplastic, Bike Symbol, 72 in.
  - (35) Pavement Message Markings, Thermoplastic, Arrow, 72 in.
  - (36) Pavement Message Markings, Thermoplastic, Lane Indication Arrow
  - (38) Transverse Markings, Thermoplastic, Stop Line, White, 24 in.
  - (40) Parallel Parking Spaces, See Detail
  - (41) Line, Thermoplastic, Dotted, White, 6 in. (2' Line, 2' Gap)
  - (43) Line, Thermoplastic, Broken, Yellow, 4 in.
  - (45) Line, Thermoplastic, Solid, White, 6 in.
  - (46) Line, Thermoplastic, Solid, White, 4 in.
  - (47) Line, Thermoplastic, Solid, Yellow, 4 in.
  - (55) Pavement Message Markings, Thermoplastic, Share the Road
  - (56) Sign, Sheet, and Supports, Remove
  - (58) Sign, Sheet, Relocate
  - (59) Sign, Sheet, Remove & Reset
  - (72) Transverse Markings, Thermoplastic, Crosswalk Line, White, 6 in.

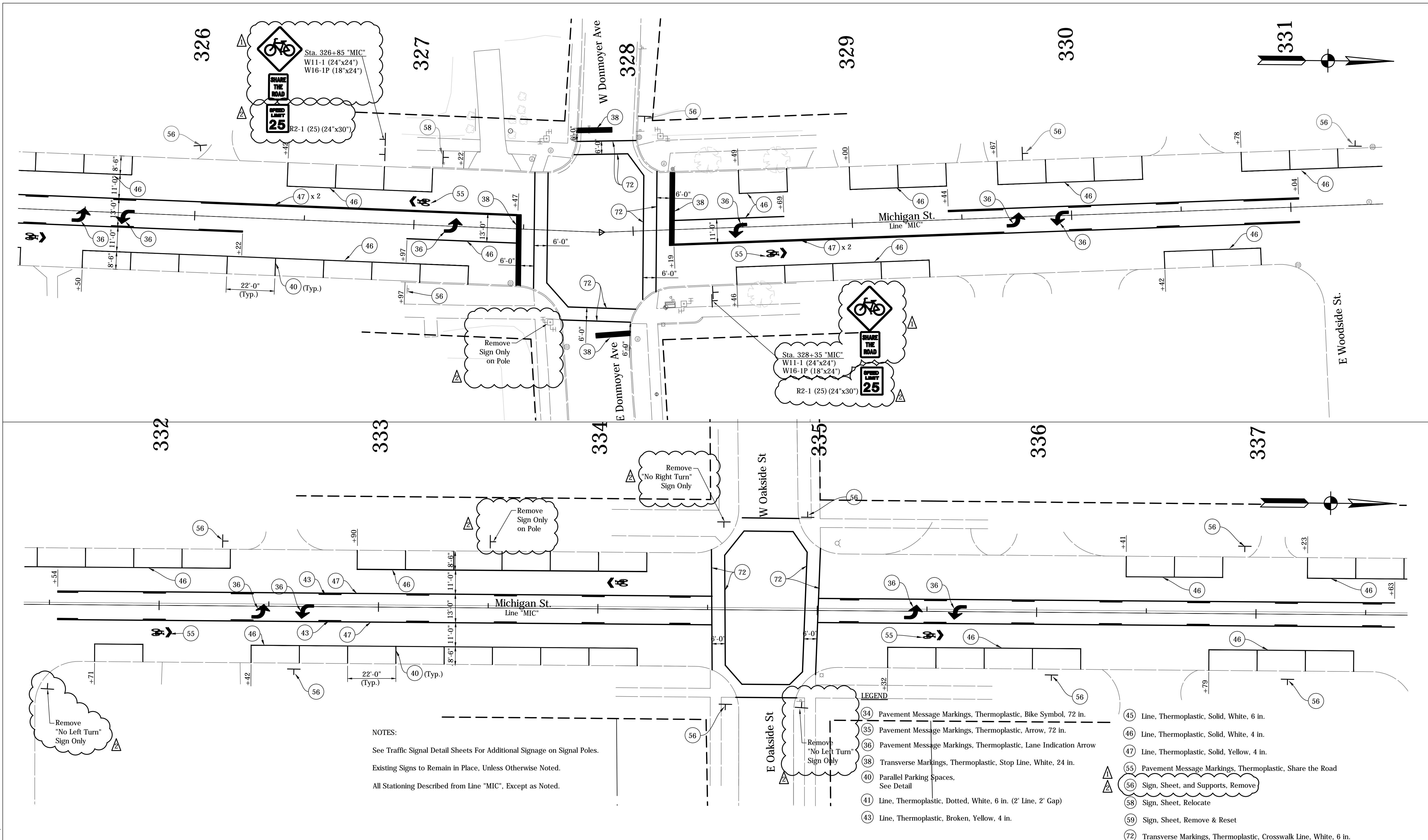
DATE	REVISION
1/15/2016	Rev 1: Revise Legend & Add Signs
1/29/2016	Rev 2: Revise Legend & Add Note to Signs & Lane Dimension



RECOMMENDED FOR APPROVAL	<i>Harry Fox</i>	01/07/2016
DESIGNED:	HCF III	DRAWN:
CHECKED:	JG	CHECKED:
		DATE

CITY OF SOUTH BEND  
**PAVEMENT MARKING & SIGNING DETAILS**  
 MICHIGAN STREET

HORIZONTAL SCALE	BRIDGE FILE
1" = 20'	N/A
VERTICAL SCALE	DESIGNATION
N/A	N/A
SURVEY BOOK	SHEETS
N/A	23 of 27
CONTRACT	PROJECT
N/A	115-019 (DIV A)

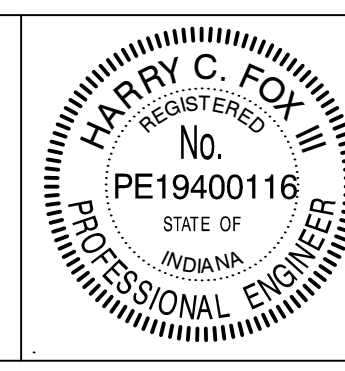


NOTES:  
 See Traffic Signal Detail Sheets For Additional Signage on Signal Poles.  
 Existing Signs to Remain in Place, Unless Otherwise Noted.  
 All Stationing Described from Line "MIC", Except as Noted.

- LEGEND**
- (34) Pavement Message Markings, Thermoplastic, Bike Symbol, 72 in.
  - (35) Pavement Message Markings, Thermoplastic, Arrow, 72 in.
  - (36) Pavement Message Markings, Thermoplastic, Lane Indication Arrow
  - (38) Transverse Markings, Thermoplastic, Stop Line, White, 24 in.
  - (40) Parallel Parking Spaces, See Detail
  - (41) Line, Thermoplastic, Dotted, White, 6 in. (2' Line, 2' Gap)
  - (43) Line, Thermoplastic, Broken, Yellow, 4 in.
  - (45) Line, Thermoplastic, Solid, White, 6 in.
  - (46) Line, Thermoplastic, Solid, White, 4 in.
  - (47) Line, Thermoplastic, Solid, Yellow, 4 in.
  - (55) Pavement Message Markings, Thermoplastic, Share the Road
  - (56) Sign, Sheet, and Supports, Remove
  - (58) Sign, Sheet, Relocate
  - (59) Sign, Sheet, Remove & Reset
  - (72) Transverse Markings, Thermoplastic, Crosswalk Line, White, 6 in.

DIRECTORY: F:\2015\15-3329 South Bend 2-Way Conversion\DRAWINGS\PAVEMENT MARKING\PM South\...  
 FILE: 15-3329 PM Michigan at south.dwg  
 DIMSCALE: 1"=20'  
 PLOTTED BY: BOURZ  
 DATE: 01/28/2016 4:57pm

DATE	REVISION
1/15/2016	Rev 1: Revise Legend & Add Signs
1/29/2016	Rev 2: Revise Legend & Add Note to Signs

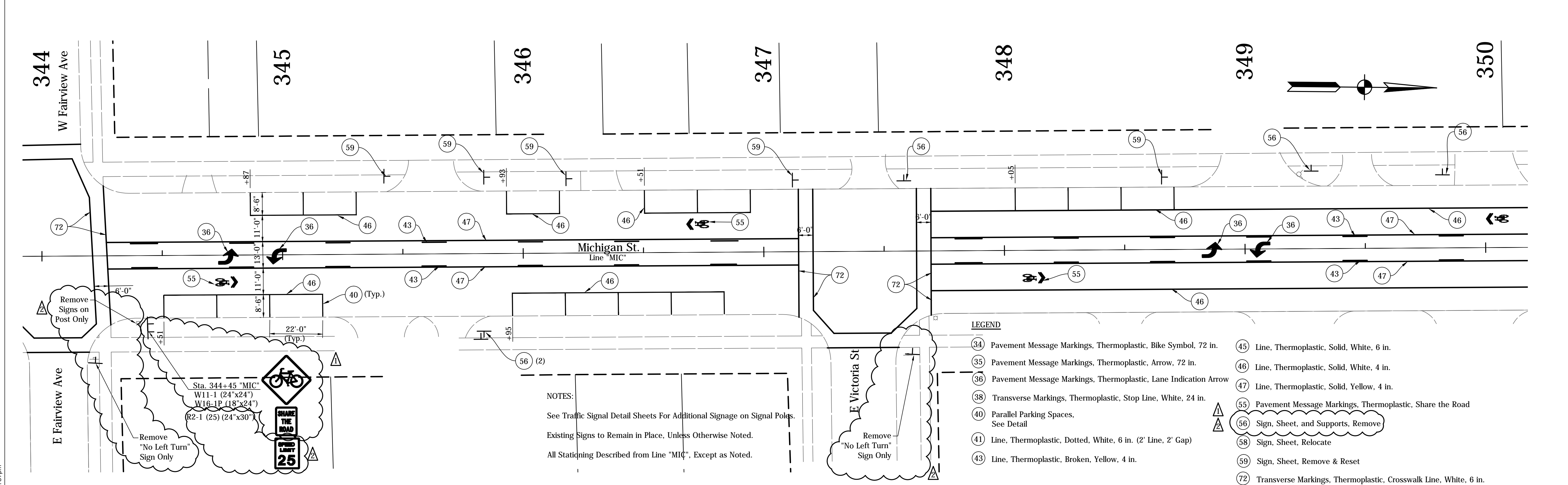
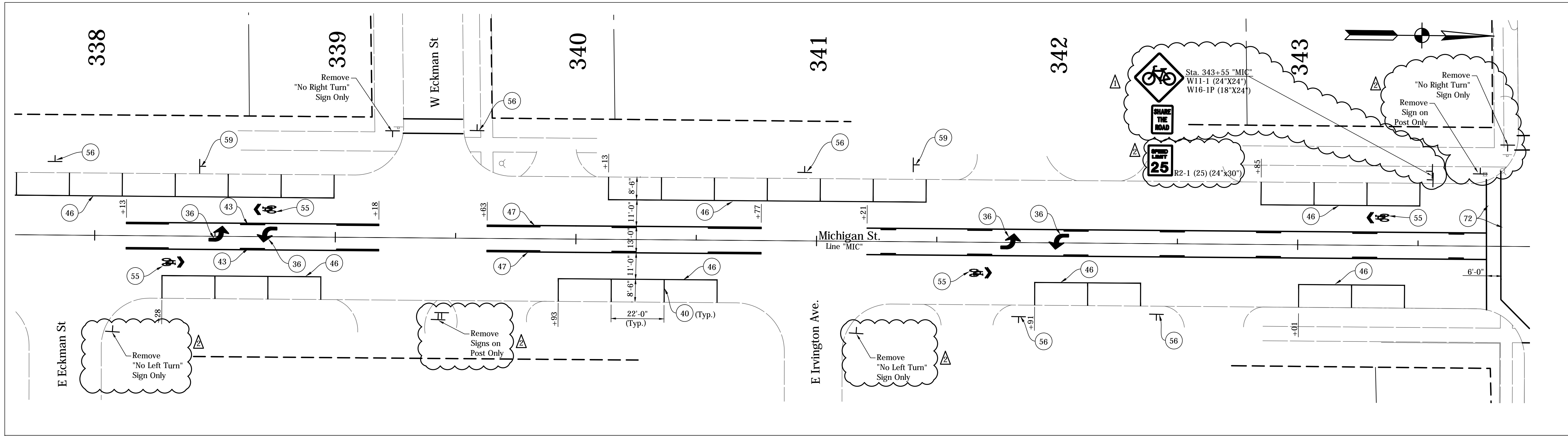


RECOMMENDED FOR APPROVAL	<i>Harry Fox</i>	DESIGN ENGINEER	01/07/2016	DATE
DESIGNED:	HCF III	DRAWN:	BRD	
CHECKED:	JG	CHECKED:	JG	

**CITY OF SOUTH BEND**  
**PAVEMENT MARKING & SIGNING DETAILS**  
**MICHIGAN STREET**

HORIZONTAL SCALE	BRIDGE FILE
1" = 20'	N/A
VERTICAL SCALE	DESIGNATION
N/A	N/A
SURVEY BOOK	SHEETS
N/A	24 of 27
CONTRACT	PROJECT
N/A	115-019 (DIV A)



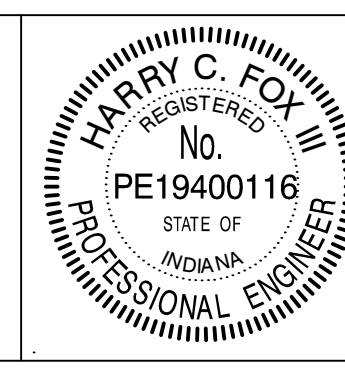


NOTES:  
 See Traffic Signal Detail Sheets For Additional Signage on Signal Poles.  
 Existing Signs to Remain in Place, Unless Otherwise Noted.  
 All Stationing Described from Line "MIC", Except as Noted.

- LEGEND**
- 34 Pavement Message Markings, Thermoplastic, Bike Symbol, 72 in.
  - 35 Pavement Message Markings, Thermoplastic, Arrow, 72 in.
  - 36 Pavement Message Markings, Thermoplastic, Lane Indication Arrow
  - 38 Transverse Markings, Thermoplastic, Stop Line, White, 24 in.
  - 40 Parallel Parking Spaces, See Detail
  - 41 Line, Thermoplastic, Dotted, White, 6 in. (2' Line, 2' Gap)
  - 43 Line, Thermoplastic, Broken, Yellow, 4 in.
  - 45 Line, Thermoplastic, Solid, White, 6 in.
  - 46 Line, Thermoplastic, Solid, White, 4 in.
  - 47 Line, Thermoplastic, Solid, Yellow, 4 in.
  - 55 Pavement Message Markings, Thermoplastic, Share the Road
  - 56 Sign, Sheet, and Supports, Remove
  - 58 Sign, Sheet, Relocate
  - 59 Sign, Sheet, Remove & Reset
  - 72 Transverse Markings, Thermoplastic, Crosswalk Line, White, 6 in.

DIRECTORY: F:\2015\15-3329 South Bend 2-Way Conversion\DRAWINGS\PAVEMENT MARKING\PM\_South\  
 FILE: 15-3329 PM Michigan at south.dwg  
 DIMSCALE: 1/8"=1'-0"  
 PLOTTED BY: BOURZ  
 DATE: 08/28/2016 4:57pm

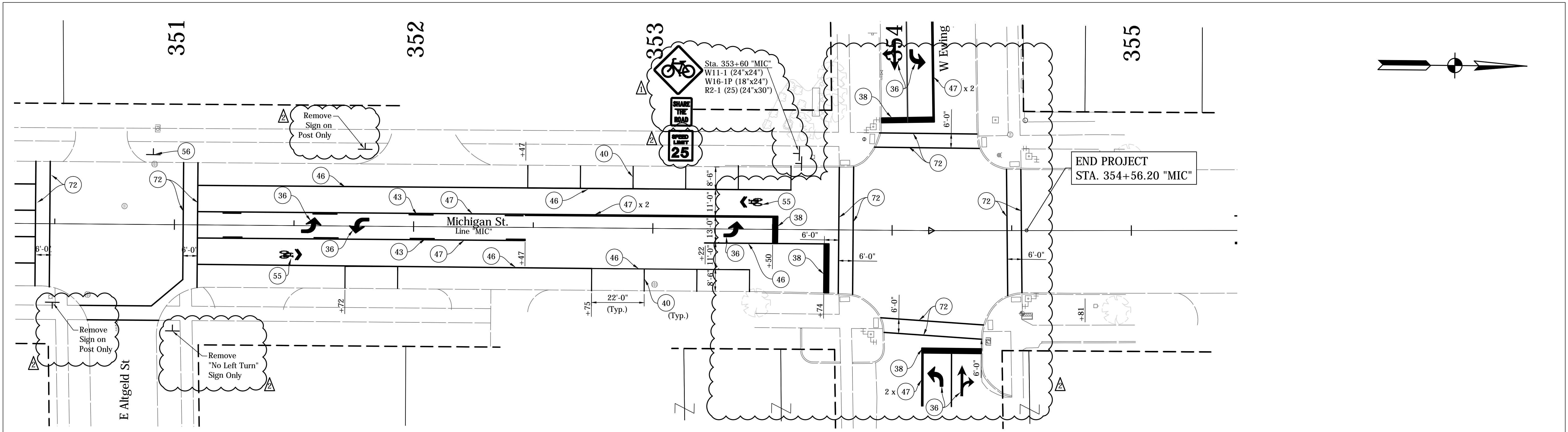
DATE	REVISION
1/15/2016	Rev 1: Revise Legend & Add Signs
1/29/2016	Rev 2: Revise Legend & Add Note to Signs



RECOMMENDED FOR APPROVAL	<i>Harry Fox</i>	DESIGN ENGINEER	01/07/2016	DATE
DESIGNED:	HCF III	DRAWN:	BRD	
CHECKED:	JG	CHECKED:	JG	

**CITY OF SOUTH BEND**  
  
**PAVEMENT MARKING & SIGNING DETAILS**  
**MICHIGAN STREET**

HORIZONTAL SCALE	BRIDGE FILE
1" = 20'	N/A
VERTICAL SCALE	DESIGNATION
N/A	N/A
SURVEY BOOK	SHEETS
N/A	25 of 27
CONTRACT	PROJECT
N/A	115-019 (DIV A)



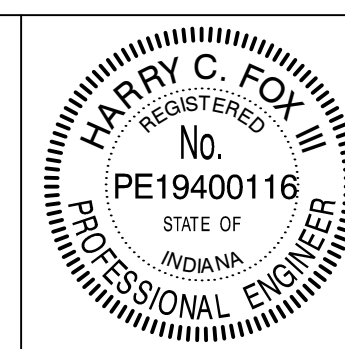
NOTES:  
 See Traffic Signal Detail Sheets For Additional Signage on Signal Poles.  
 Existing Signs to Remain in Place, Unless Otherwise Noted.  
 All Stationing Described from Line "MIC", Except as Noted.

**LEGEND**

- (34) Pavement Message Markings, Thermoplastic, Bike Symbol, 72 in.
- (35) Pavement Message Markings, Thermoplastic, Arrow, 72 in.
- (36) Pavement Message Markings, Thermoplastic, Lane Indication Arrow
- (38) Transverse Markings, Thermoplastic, Stop Line, White, 24 in.
- (40) Parallel Parking Spaces, See Detail
- (41) Line, Thermoplastic, Dotted, White, 6 in. (2' Line, 2' Gap)
- (43) Line, Thermoplastic, Broken, Yellow, 4 in.
- (45) Line, Thermoplastic, Solid, White, 6 in.
- (46) Line, Thermoplastic, Solid, White, 4 in.
- (47) Line, Thermoplastic, Solid, Yellow, 4 in.
- (53) Pavement Message Markings, Thermoplastic, Share the Road
- (56) Sign, Sheet, and Supports, Remove
- (58) Sign, Sheet, Relocate
- (59) Sign, Sheet, Remove & Reset
- (72) Transverse Markings, Thermoplastic, Crosswalk Line, White, 6 in.

DIRECTORY: F:\2015\15-3329 South Bend 2-Way Conversion\DRAWINGS\PAVEMENT MARKING\PM\_South\  
 FILE:.....15-3329 PM Michigan at south.dwg  
 DIMSCALE: 1"=20'  
 PLOTTED BY: BOURZON, JON  
 DATE: 01/28/2016 4:58pm

DATE	REVISION
1/15/2016	Rev 1: Revise Legend & Add Signs
1/29/2016	Rev 2: Revise Legend & Add Note to Signs & Pavement Labels and Remove Sign



RECOMMENDED FOR APPROVAL	<i>Harry Fox</i>	DESIGN ENGINEER	01/07/2016	DATE
DESIGNED:	HCF III	DRAWN:	BRD	
CHECKED:	JG	CHECKED:	JG	

**CITY OF SOUTH BEND**  
  
**PAVEMENT MARKING & SIGNING DETAILS**  
**MICHIGAN STREET**

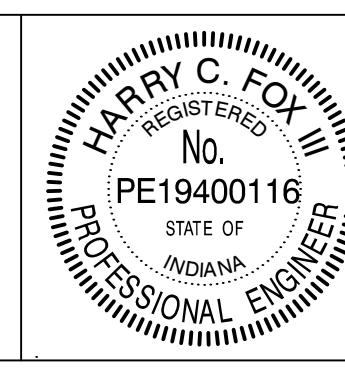
HORIZONTAL SCALE	BRIDGE FILE
1" = 20'	N/A
VERTICAL SCALE	DESIGNATION
N/A	N/A
SURVEY BOOK	SHEETS
N/A	26 of 27
CONTRACT	PROJECT
N/A	115-019 (DIV A)

SHEET SIGN & POST SUMMARY												
LINE	SIGN LOCATION	SIGN CODE	SIGN SIZE (IN x IN)	GROUND - MOUNTED SIGN AREA (SFT)			SQUARE			REINFORCED ANCHOR POST LENGTH (FT)	REINFORCED ANCHOR POST LENGTH (FT)	
				0.080"	0.100"	0.125"	2" x 2" - 12 GA. (TYPE 2)		2 1/4" x 2 1/4" - 12 GA. (TYPE 1)			
							1	2	TOTAL			1
MAI	603+55	R2-1 (25)	24 x 30	5.0						9.5	9.5	
MAI	604+05	W9-2(L)	36 x 36		9.0					10	10	
MAI	604+90	W4-2(L)	36 x 36		9.0					12.5	12.5	
MAI	608+31	R1-1	30 x 30	6.3						10	10	
MAI	627+24	R2-1 (25)	24 x 30	5.0						9.5	9.5	
MAI	628+07	R2-1 (25)	24 x 30	5.0						9.5	9.5	
MAI	653+04	R2-1 (25)	24 x 30	5.0						9.5	9.5	
MAI	653+30	R3-7	30 x 30	6.3						10	10	
MAI		R3-1	36 x 36		9.0					MAST ARM AT EWING		
MAI		R3-2	36 x 36		9.0					MAST ARM AT EWING		
MAI		R5-1	36 x 36		9.0					MAST ARM AT EWING		
MIC	308+15	W11-1	24 x 24	4.0						13.0	13.0	
		W16-1P	18 x 24	3.0								
MIC	309+65	W11-1	24 x 24	4.0						13.0	13.0	
		W16-1P	18 x 24	3.0								
MIC	314+00	R2-1 (25)	24 x 30	5.0						9.5	9.5	
MIC	314+77	R2-1 (25)	24 x 30	5.0						9.5	9.5	
MIC	316+75	W11-1	24 x 24	4.0						13.0	13.0	
		W16-1P	18 x 24	3.0								
MIC	317+10	W11-1	24 x 24	4.0						13.0	13.0	
		W16-1P	18 x 24	3.0								
MIC	326+85	R2-1 (25)	24 x 30	5.0						9.5	9.5	
MIC	326+85	W11-1	24 x 24	4.0						13.0	13.0	
		W16-1P	18 x 24	3.0								
MIC	328+35	R2-1 (25)	24 x 30	5.0						9.5	9.5	
MIC	328+35	W11-1	24 x 24	4.0						13.0	13.0	
		W16-1P	18 x 24	3.0								
MIC	343+55	R2-1 (25)	24 x 30	5.0						9.5	9.5	
MIC	343+55	W11-1	24 x 24	4.0						13.0	13.0	
		W16-1P	18 x 24	3.0								
MIC	344+45	R2-1 (25)	24 x 30	5.0						9.5	9.5	
MIC	344+45	W11-1	24 x 24	4.0						13.0	13.0	
		W16-1P	18 x 24	3.0								
SUBTOTALS					118.6	45.0					229.0	

SHEET SIGN & POST SUMMARY												
LINE	SIGN LOCATION	SIGN CODE	SIGN SIZE (IN x IN)	GROUND - MOUNTED SIGN AREA (SFT)			SQUARE			REINFORCED ANCHOR POST LENGTH (FT)	REINFORCED ANCHOR POST LENGTH (FT)	
				0.080"	0.100"	0.125"	2" x 2" - 12 GA. (TYPE 2)		2 1/4" x 2 1/4" - 12 GA. (TYPE 1)			
							1	2	TOTAL			1
MIC	353+60	W11-1	24 x 24	4.0						13.0	13.0	
		W16-1P	18 x 24	3.0								
MIC	353+60	R2-1 (25)	24 x 30	5.0						9.5	9.5	
SUBTOTALS						12.0					22.5	
TOTALS					130.6	45.0					251.5	

DIRECTORY: F:\2015\15-3229 South Bend 2 Way Conversion\DRAWINGS\TABLES  
 FILE: 15-3229 sign sheet.dwg  
 DESIGNED BY: HDB/BR/2016  
 DATE: 1/29/2016 5:29pm  
 DOWNSCALE: 1 L1SCALE: 20

DATE	REVISION
1/29/2016	Rev 2: Add Sheet



RECOMMENDED FOR APPROVAL	<i>Harry Fox</i>	DESIGN ENGINEER	01/07/2016	DATE
DESIGNED:	HCF III	DRAWN:	BRD	
CHECKED:	JG	CHECKED:	JG	

CITY OF SOUTH BEND	
SHEET SIGN & POST SUMMARY	

HORIZONTAL SCALE	BRIDGE FILE
VERTICAL SCALE	DESIGNATION
SURVEY BOOK	SHEETS
N/A	26-1 of 27
CONTRACT	PROJECT
N/A	115-019 (DIV A)