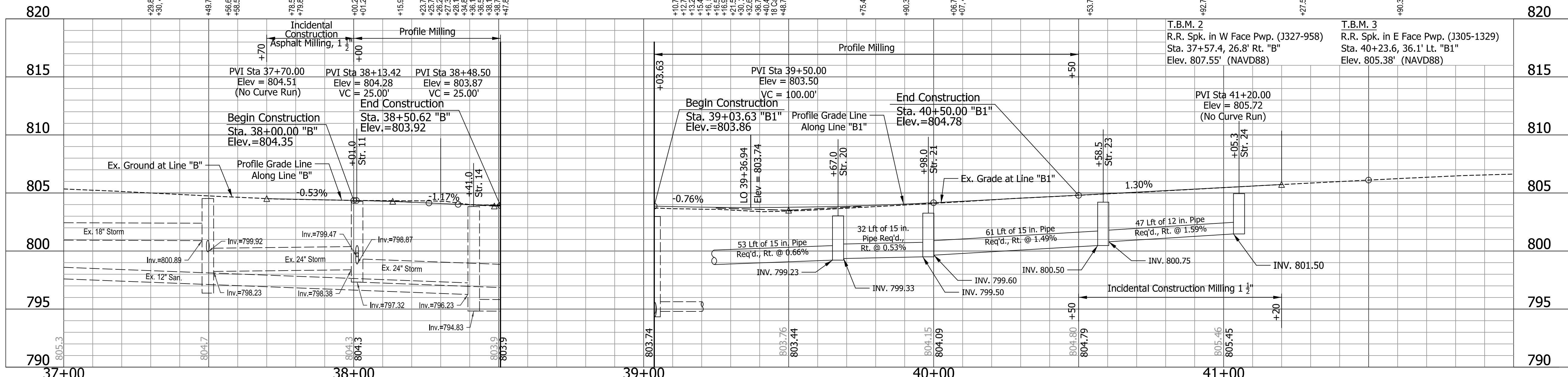
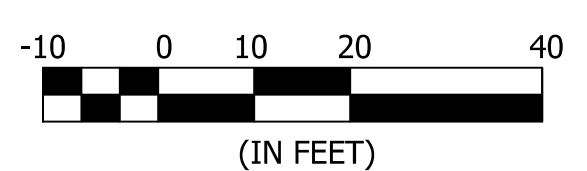


Earthwork Summary		
Line "B1"	Cut	Fill + 15%
Line "C"	212 CYS	141 CYS
Line "C1"	1,034 CYS	139 CYS
Line "D"	761 CYS	181 CYS
Roundabout	1,110 CYS	469 CYS
Sub-Total	1,068 CYS	925 CYS
Pavement Removal	4,185 CYS	1,855 CYS
TOTAL	-2,772 CYS	
USE	1,413 CYS	1,800 CYS*

\* Undistributed Quantity Assuming No Excavation Will Be Suitable For Use As Borrow

- NOTES:**
- FOR MATERIALS AND DIMENSIONS SEE CONSTRUCTION DETAIL SHEETS.
  - FOR DRAINAGE INFORMATION SEE DRAINAGE DETAIL SHEETS.
  - ALL R/W THIS SHEET TO BE AS SHOWN
  - ALL R/W ON THIS SHEET DESCRIBED FROM LINE "B" EXCEPT AS NOTED.
  - LINE "B" & "B1" TO BE CONSTRUCTED
  - FOR TRAFFIC SIGNAL DETAIL SEE SHEET 50.



1/21/2016 1:42:05 PM I:\140109 - Chippewa Ave Roundabout\06 Road\DWG\Plans\140109\_18\_PP.dgn

Plans Prepared By:

**Beam, Longest and Neff, LLC**  
 Consulting Engineers, Land Surveyors,  
 Land Planners & Landscape Architects

8126 Castleton Road, Indianapolis, IN 46250  
 Phone: 317.849.5832

www.B-L-N.com  
 Fax: 317.841.4281

3 N. = 2327483.3390  
 E. = 168101.3815

949 N. = 2327339.2863  
 E. = 168122.0371

950 N. = 2327339.2021  
 E. = 168117.7093

Sta. 40+22.10, 26.68 Lt. "B1"

P.O.T. = 38+79.93 "B" =  
 P.I. = 50+00.00 "D"

P.O.T. = 38+79.53 "B1" =  
 P.O.T. = 49+95.67 "D"

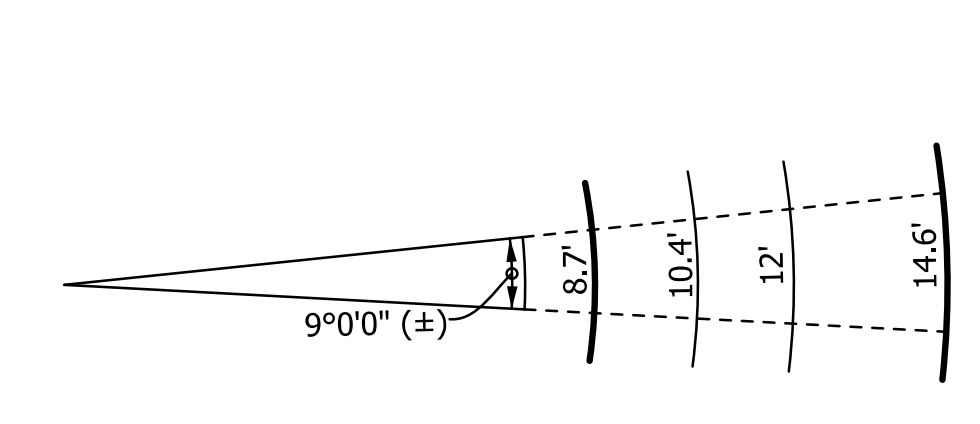
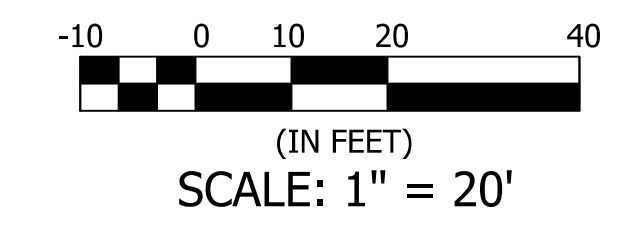
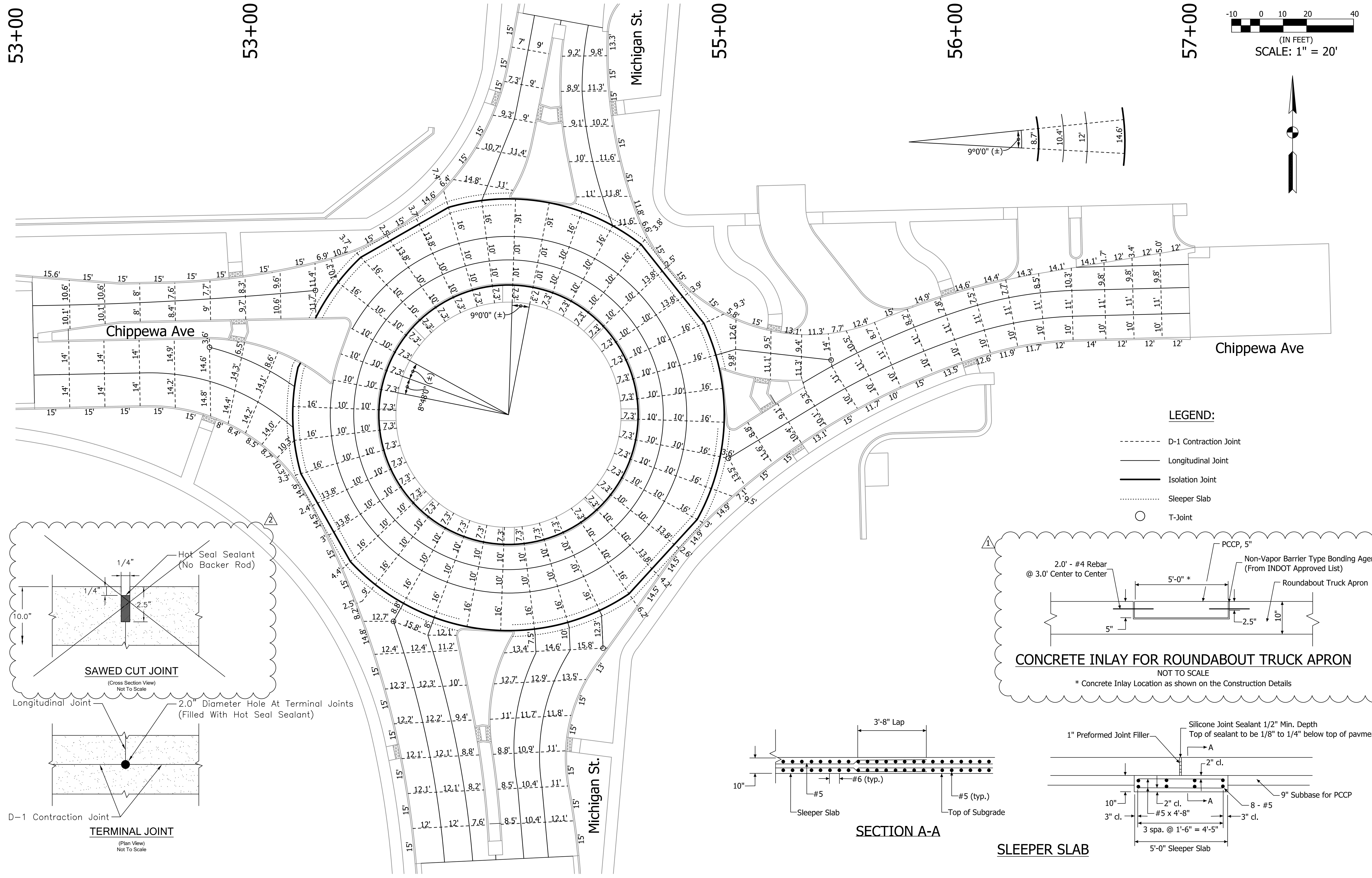
*Vance G. Epple*  
 SIGNATURE

12/17/2015  
 DATE

**CITY OF SOUTH BEND, INDIANA**  
**ROUNDBOUT INTERSECTION AT**  
**MICHIGAN ST. AND CHIPPEWA AVE.**

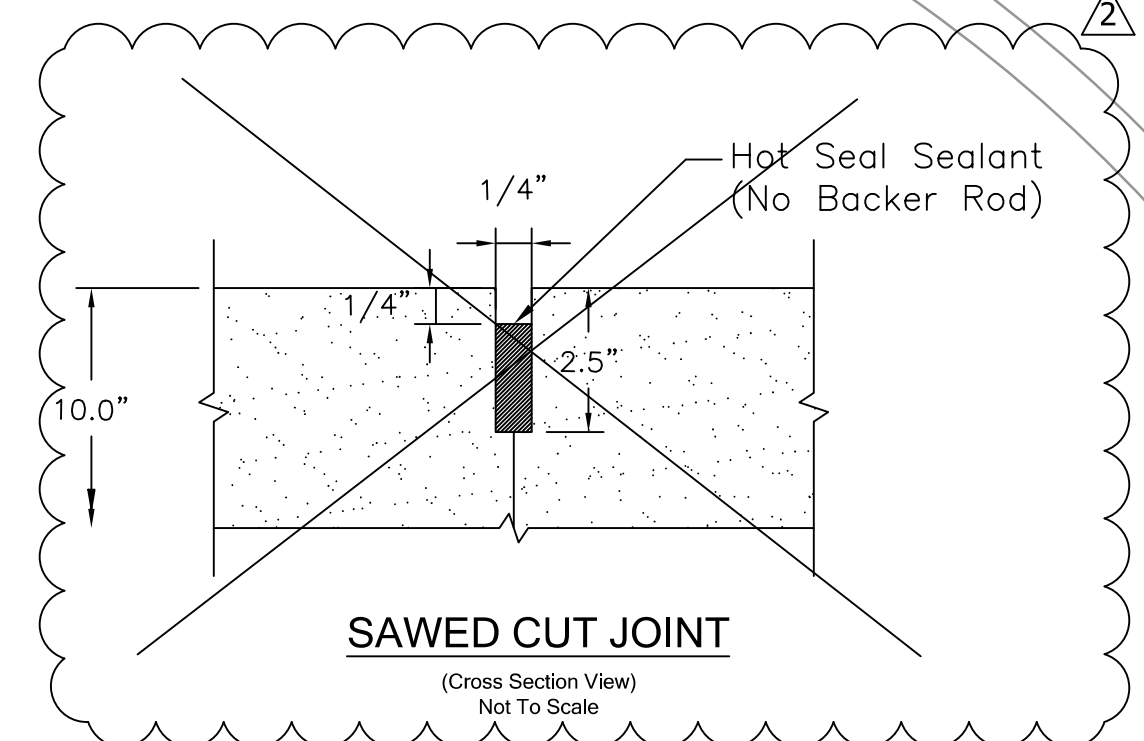
PLAN AND PROFILE- LINE "B" AND "B1"  
 STA. 37+00 TO STA. 42+00

REVISIONS	HORIZONTAL SCALE 1" = 20'	PROJECT NUMBER <b>114-045</b>
	VERTICAL SCALE 1" = 5'	SHEETS <b>27</b> OF <b>97</b>
DRAWN: JJP	SURVEY BOOK	
CHECKED: AJD	DATE Nov. 17, 2015	

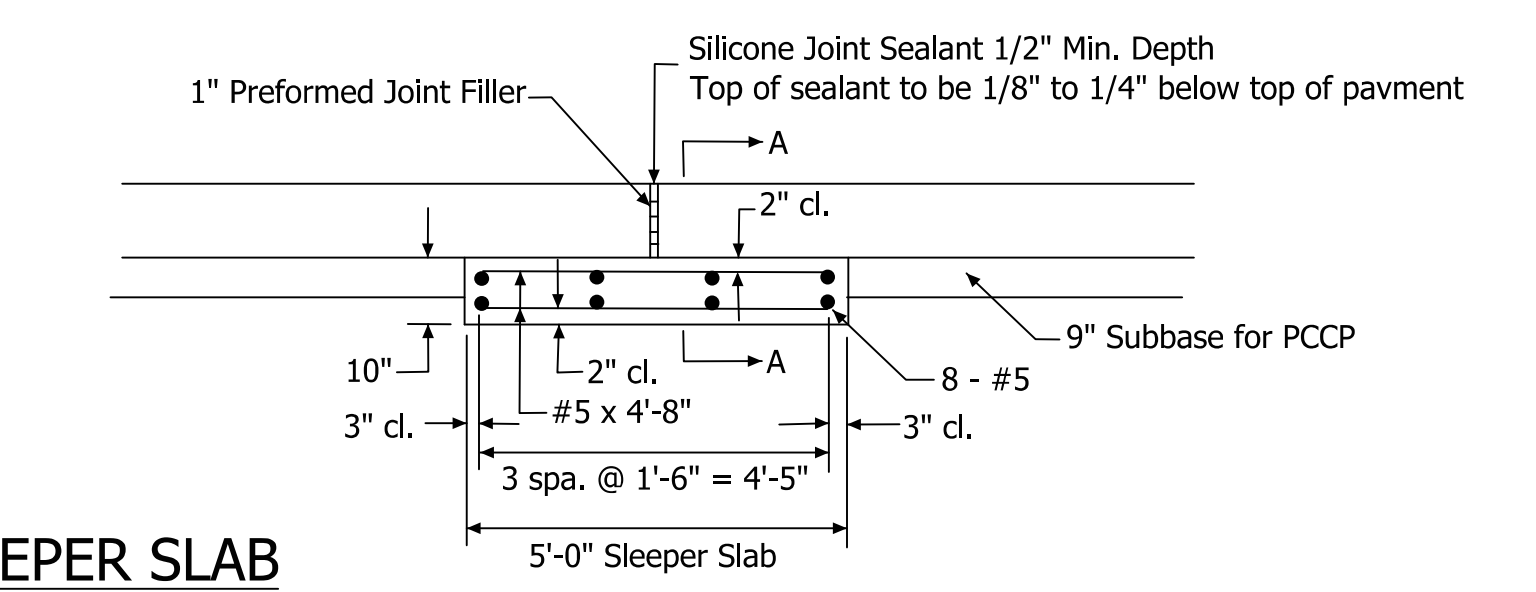
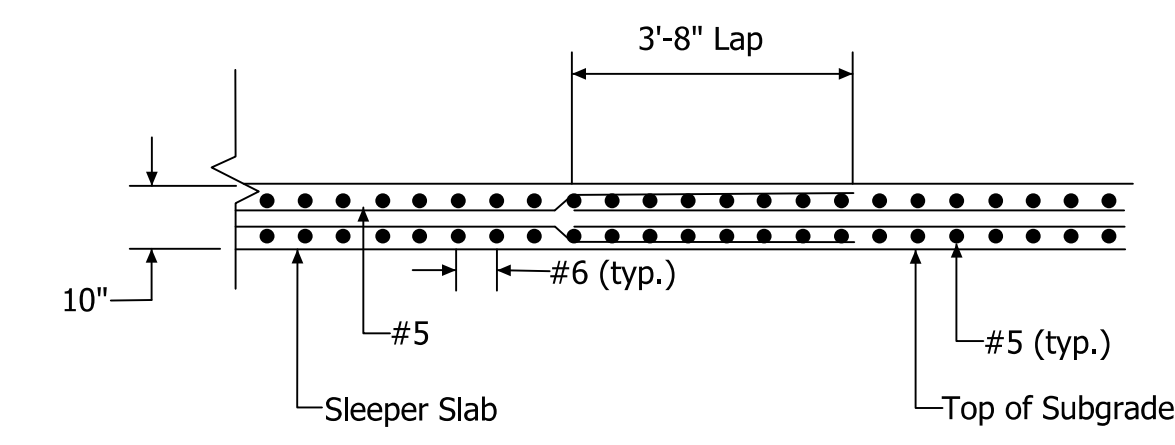
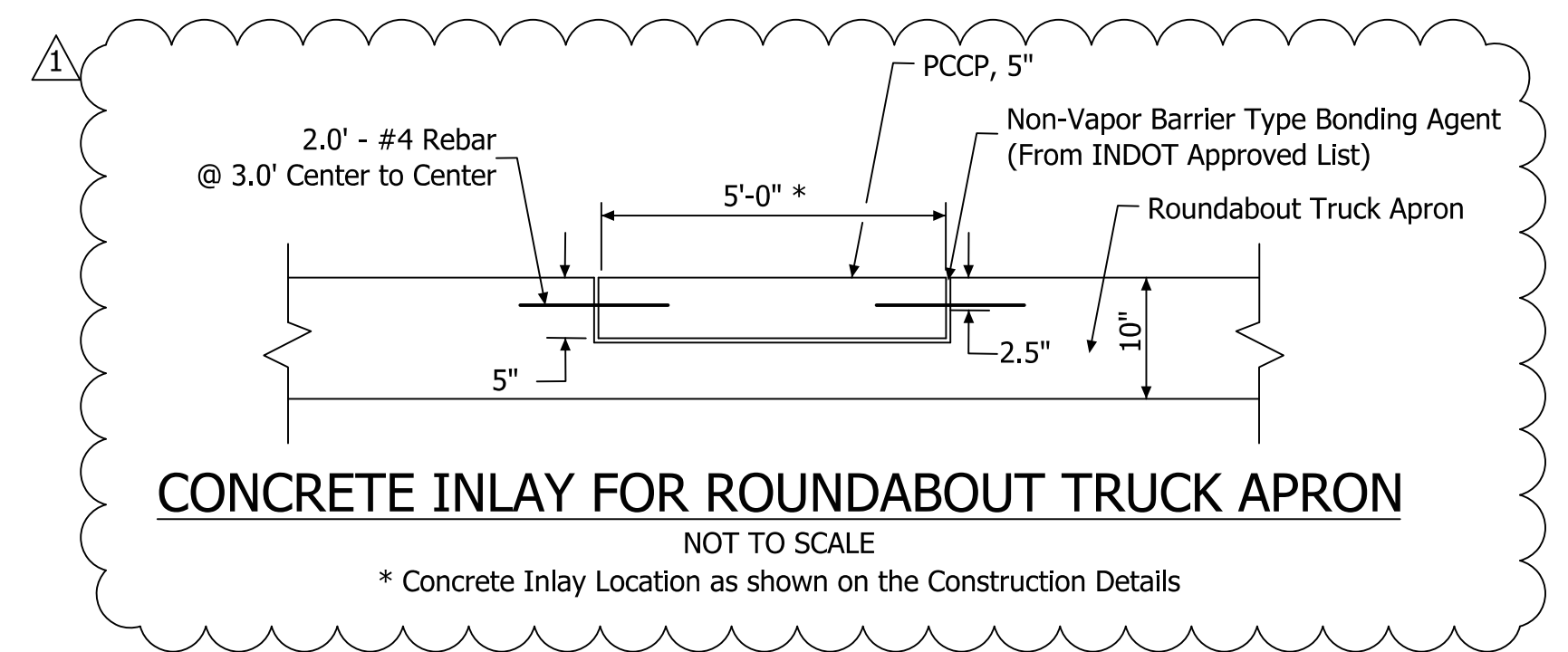
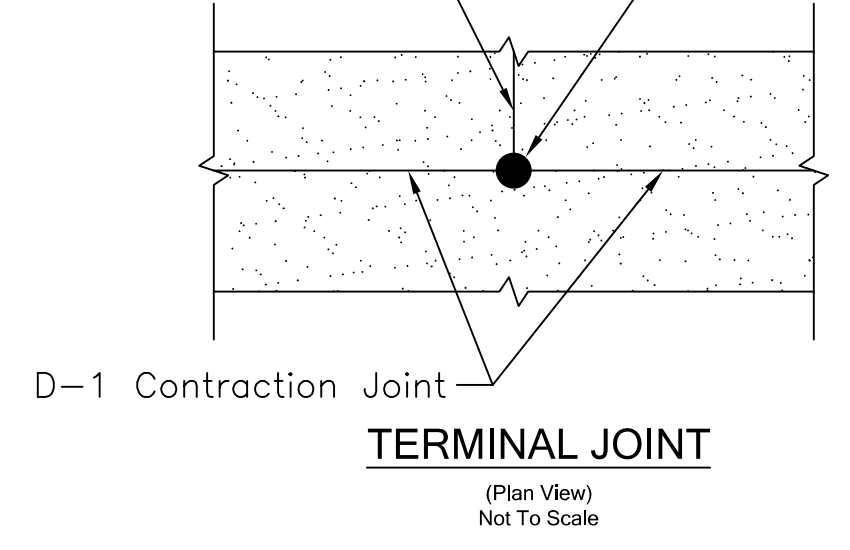


**LEGEND:**

- D-1 Contraction Joint
- Longitudinal Joint
- Isolation Joint
- ..... Sleeper Slab
- T-Joint



Longitudinal Joint  
2.0" Diameter Hole At Terminal Joints  
(Filled With Hot Seal Sealant)



1/21/2016 3:56:42 PM I:\140109 - Chippewa Ave Roundabout\06 Road\DCN\Plans\140109\_24\_Joint\_Detail.01.dgn

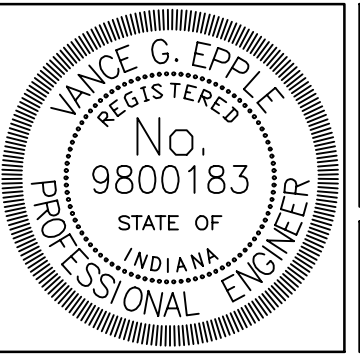
Plans Prepared By:

**Beam, Longest and Neff, LLC**  
Consulting Engineers, Land Surveyors,  
Land Planners & Landscape Architects

8126 Castleton Road, Indianapolis, IN 46250  
Phone: 317.849.5832

www.B-L-N.com  
Fax: 317.841.4281

*Vance G. Epple*  
SIGNATURE DATE 12/17/2015

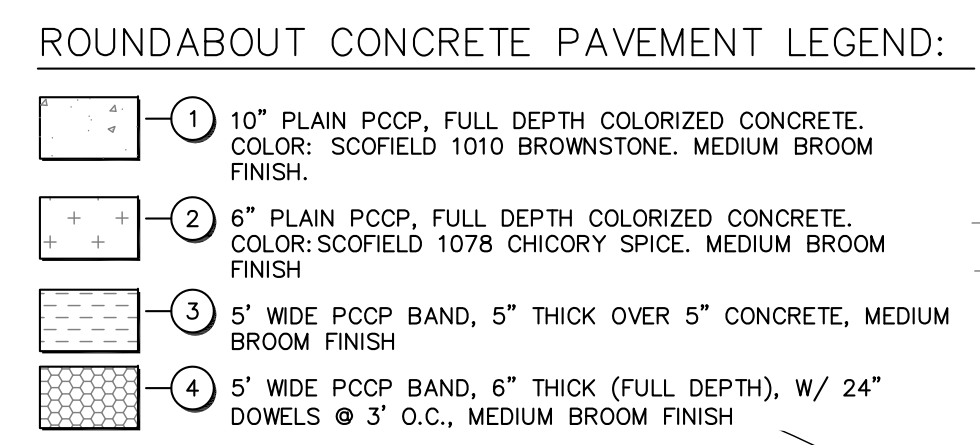
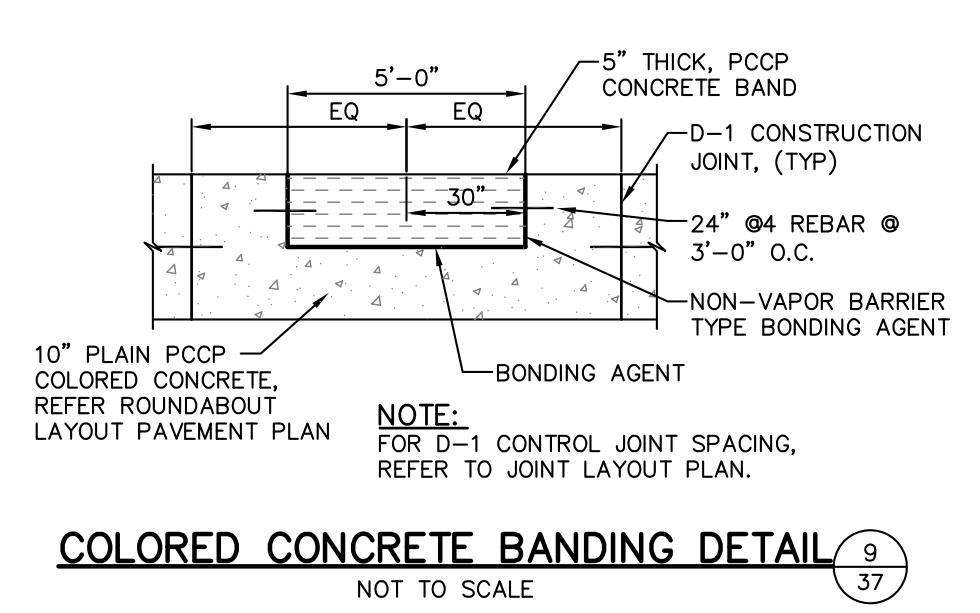
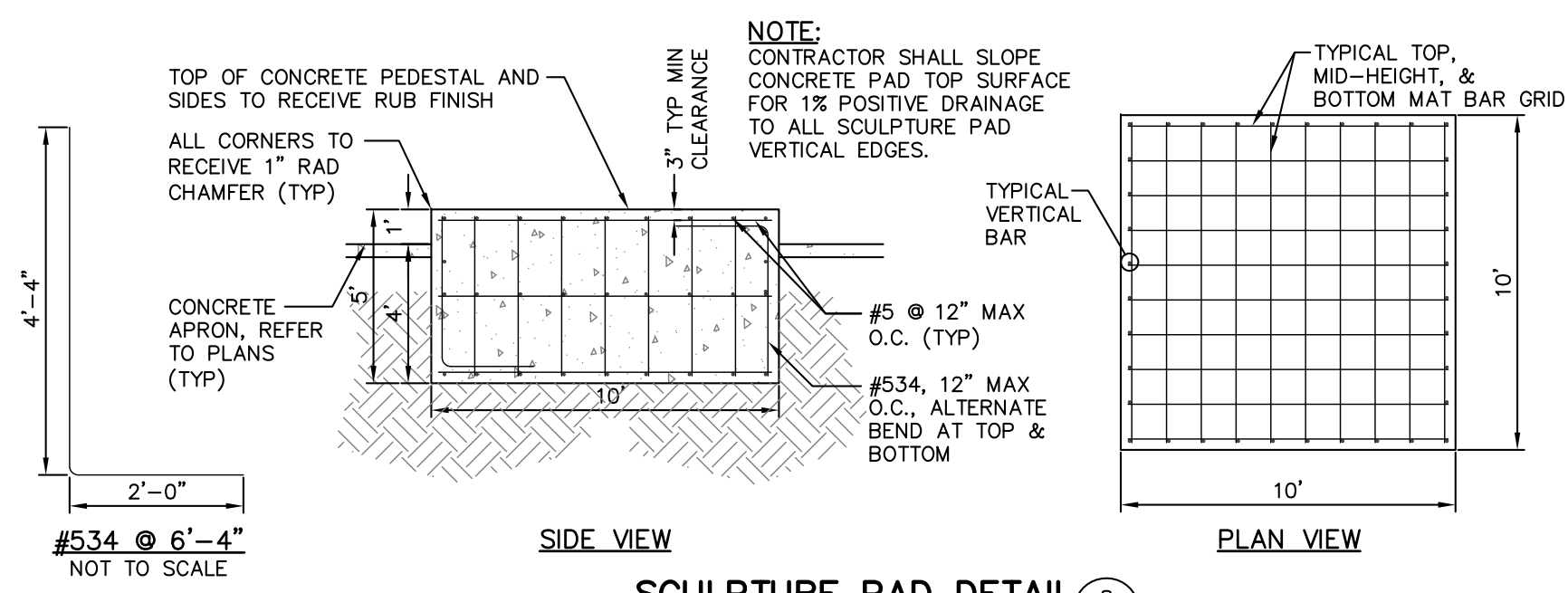


**CITY OF SOUTH BEND, INDIANA**  
**ROUNDABOUT INTERSECTION AT**  
**MICHIGAN ST. AND CHIPPEWA AVE.**

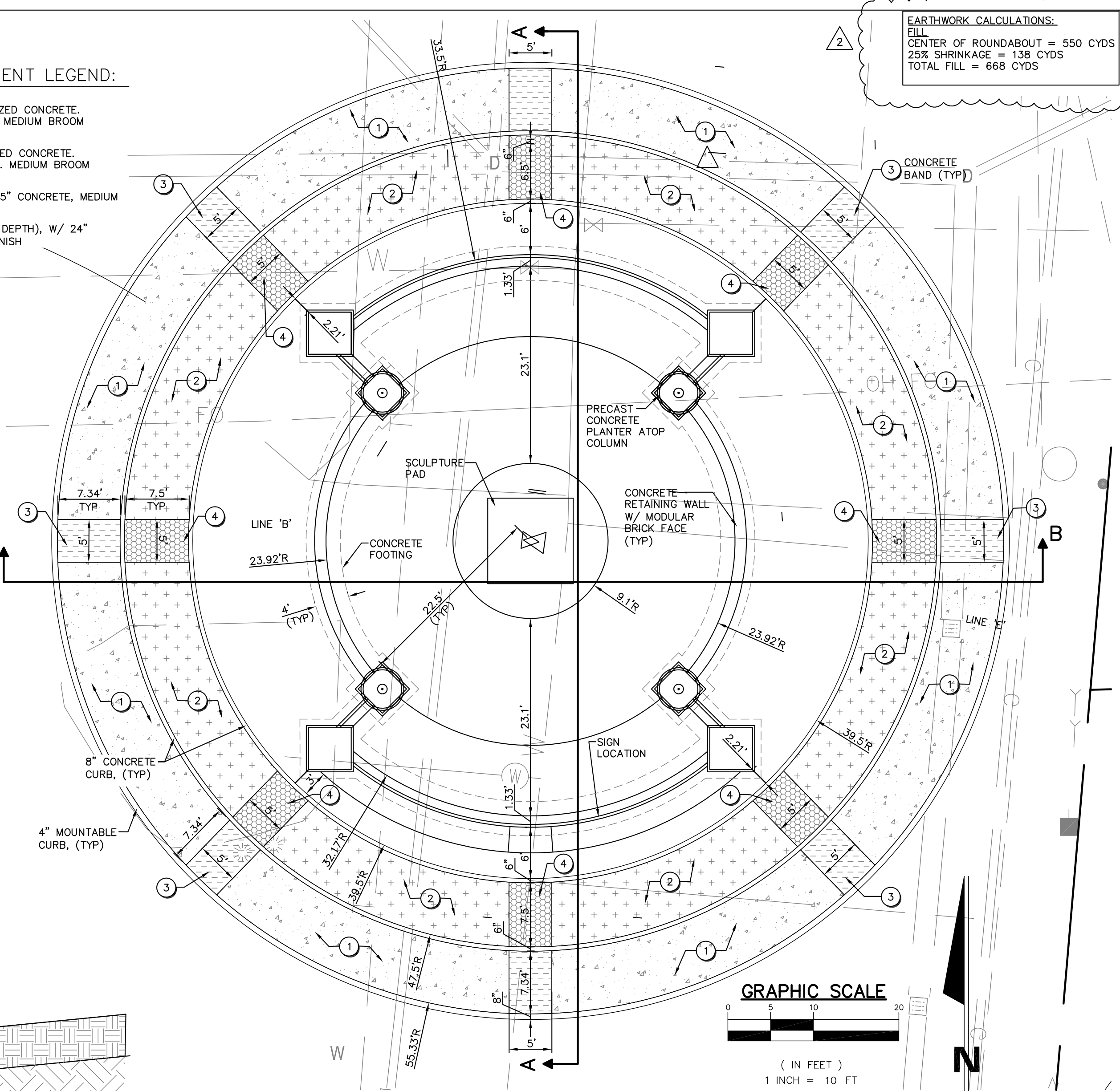
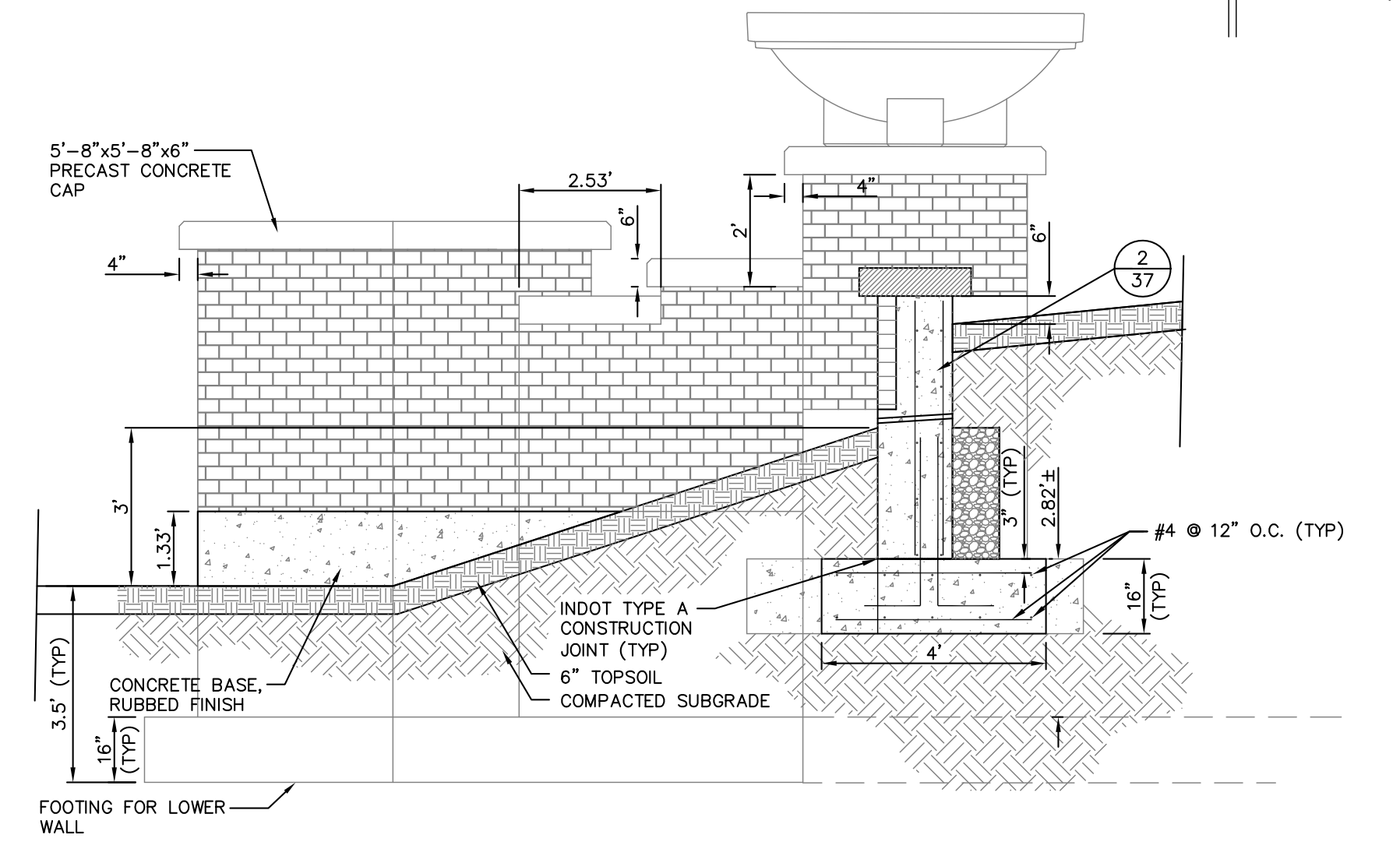
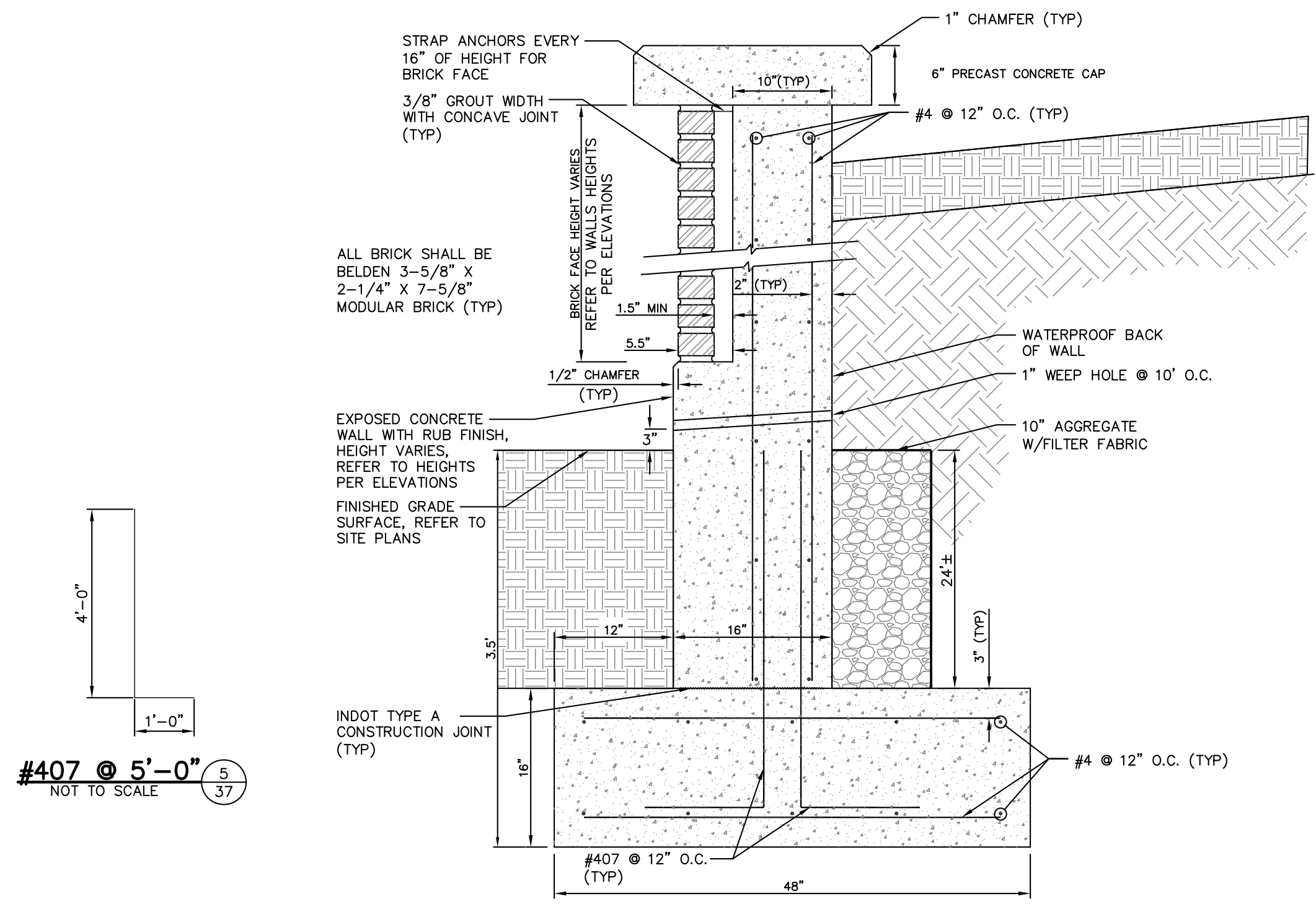
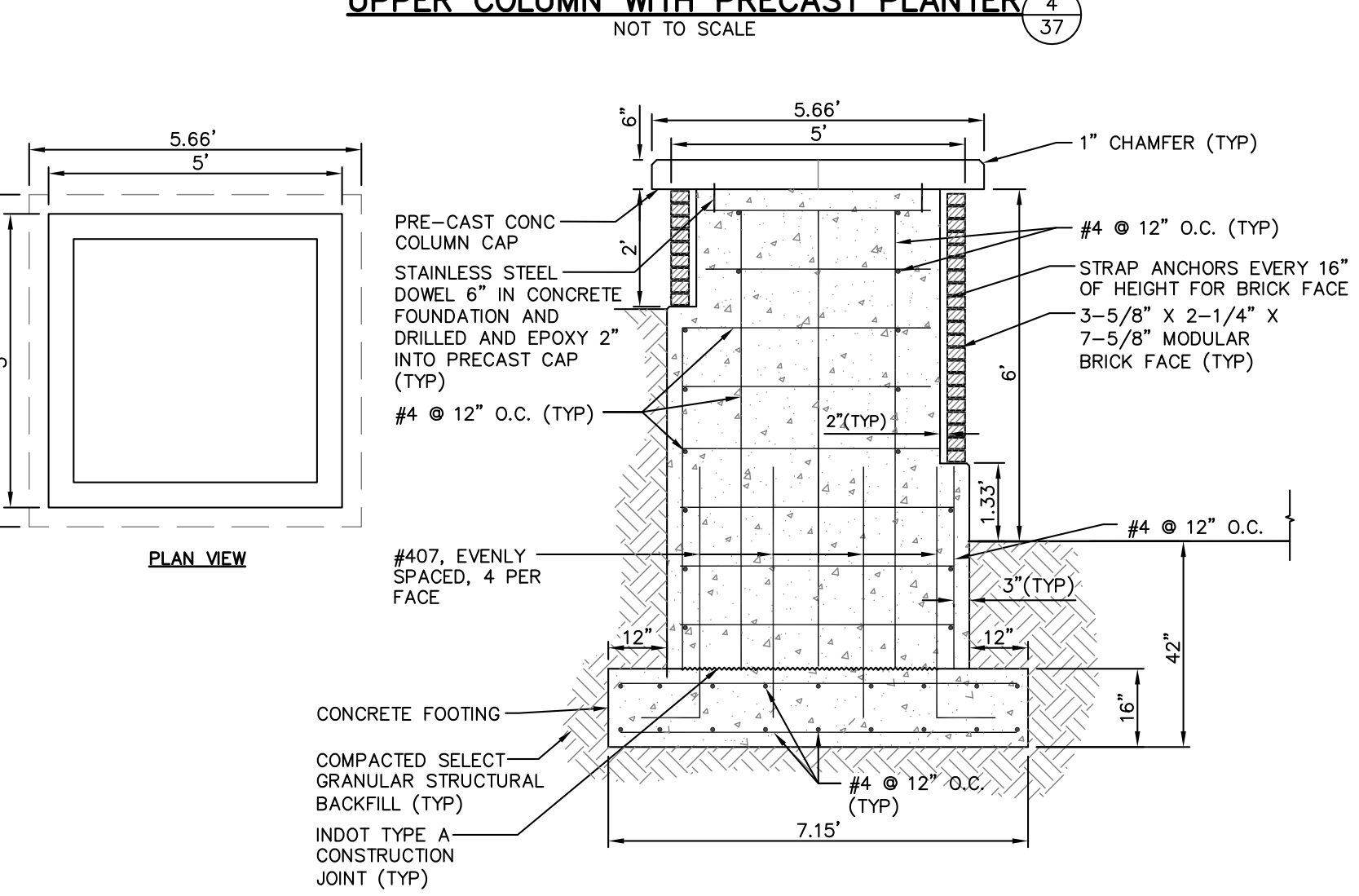
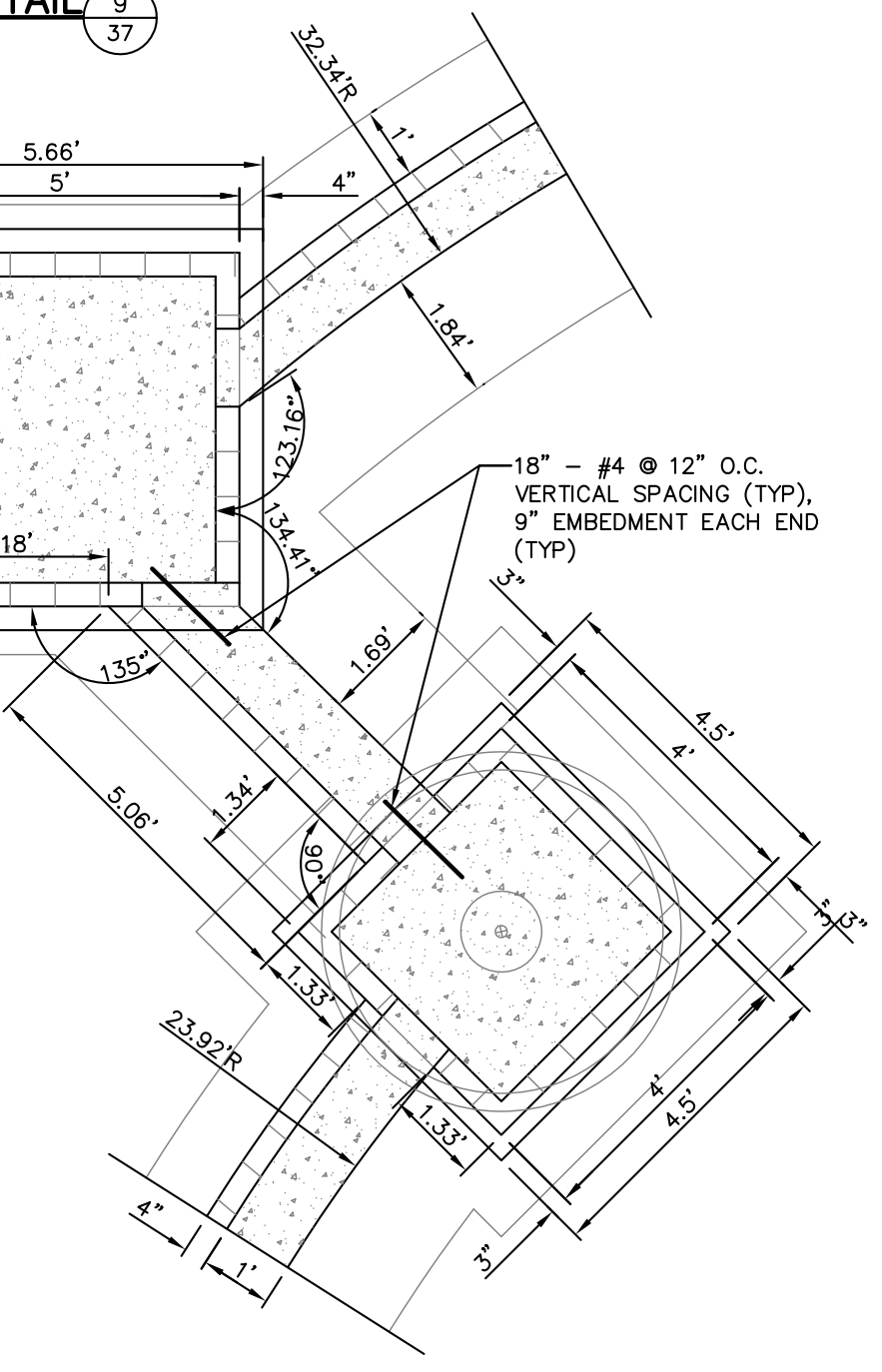
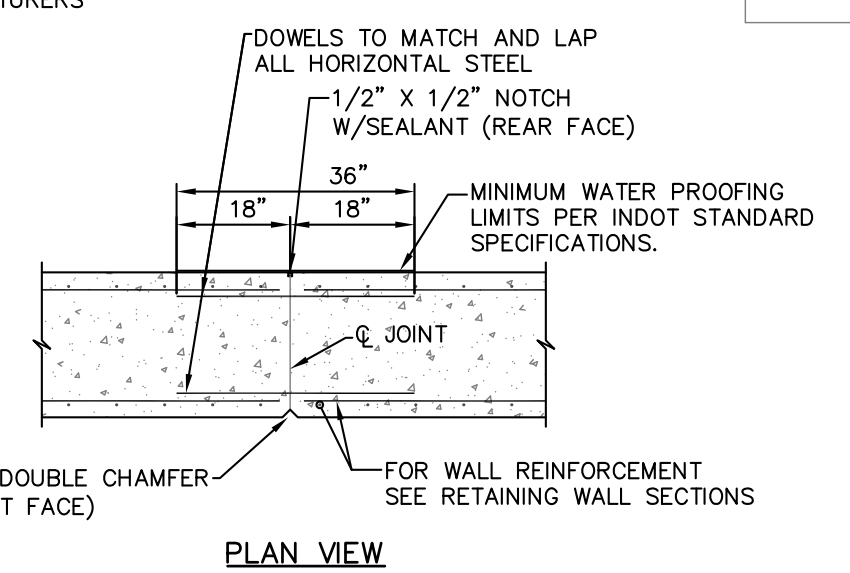
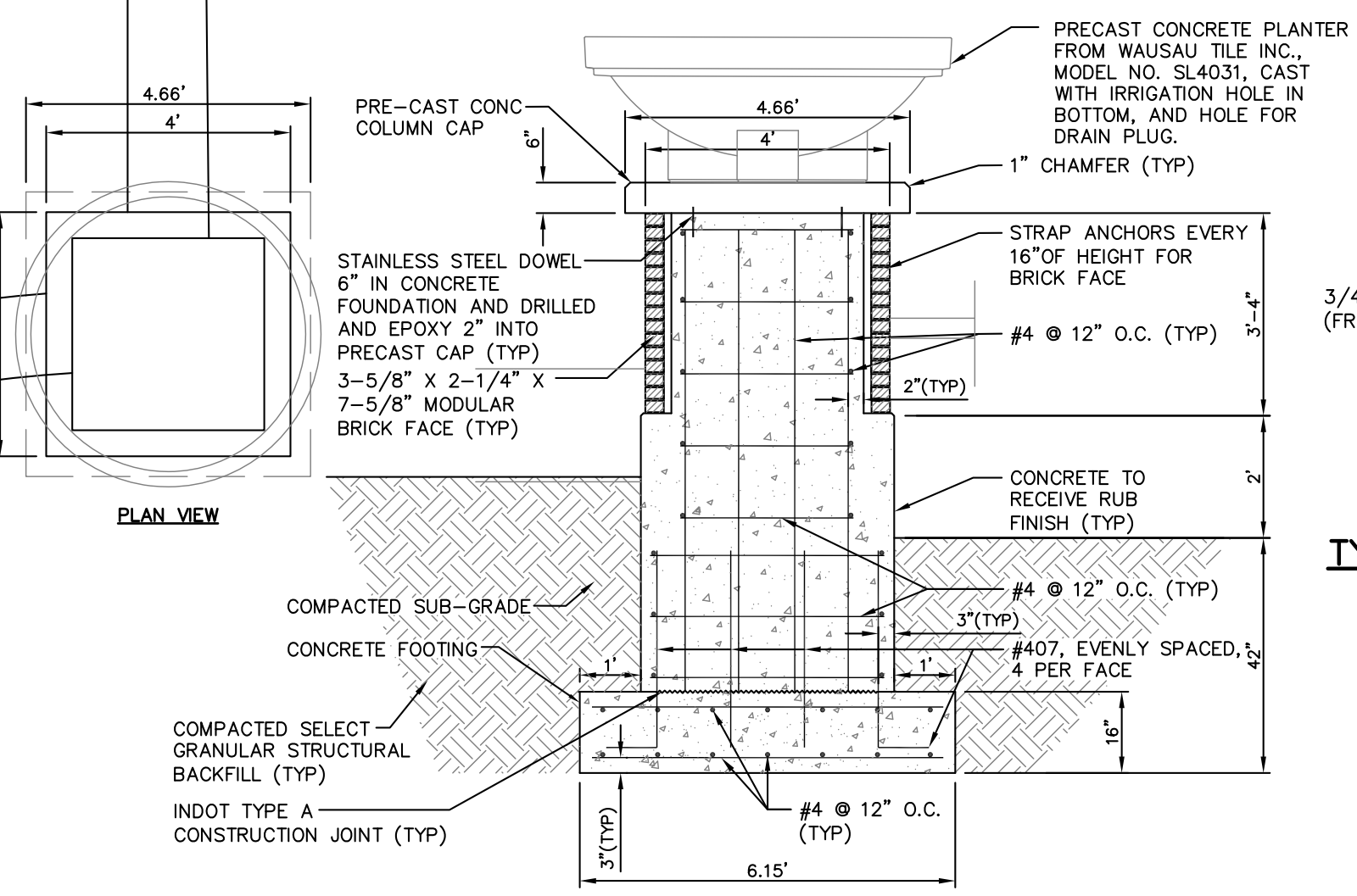
ROUNDABOUT JOINTING DETAIL

REVISIONS	HORIZONTAL SCALE 1" = 20'	PROJECT NUMBER <b>114-045</b>
	VERTICAL SCALE	
DRAWN: NLC	SURVEY BOOK	SHEETS
CHECKED: AJD	DATE Nov. 17, 2015	<b>49</b> OF <b>97</b>





- TYPICAL CONCRETE WALL AND COLUMN NOTES:**
- ALL REINFORCING STEEL SHALL BE GRADE 60 EPOXY COATED.
  - MINIMUM REBAR LAP: #4 = 18"
  - CONTRACTOR SHALL INSTALL STRAP ANCHORS EVERY 16" OF HEIGHT FOR BRICK FACE.
  - CONTRACTOR SHALL INSTALL 6" BRICK LEDGE AT ALL LOCATIONS TO RECEIVE BRICK FACE. 6" SHALL BE A 5-1/2" LEDGE WITH 1/2" FRONT EDGE CHAMFER. CONTRACTOR SHALL ALLOW MIN 1-1/2" AIR SPACE BEHIND BRICK.
  - CONTRACTOR SHALL INSTALL 2-1/2" HIGH QUADRO-VENT (OR APPROVED EQUAL) IN PLACE OF VERTICAL JOINT. COLOR TO MATCH MORTAR, FOR WEEP HOLES. CONTRACTOR SHALL INSTALL WEEP HOLES AT 2' O.C. AT TOP AND BOTTOM ROWS OF BRICK FACE, TOP AND BOTTOM WEEP HOLES SHALL BE HORIZONTAL OFFSET OF 1' O.C.
  - ALL EXPOSED CONCRETE WALL SURFACES SHALL RECEIVE RUB FINISH.
  - CONTRACTOR SHALL WEATHER SEAL BRICK WITH SILOXANE WB CONCENTRATE, OR APPROVED EQUAL. APPLY PER MANUFACTURERS INSTRUCTIONS.
  - CONTRACTOR SHALL WATERPROOF BACKSIDE OF WALLS AND COLUMNS TO RECEIVE BACKFILL.



**EARTHWORK CALCULATIONS:**  
FILL  
CENTER OF ROUNDABOUT = 550 CYDS  
25% SHRINKAGE = 138 CYDS  
TOTAL FILL = 668 CYDS

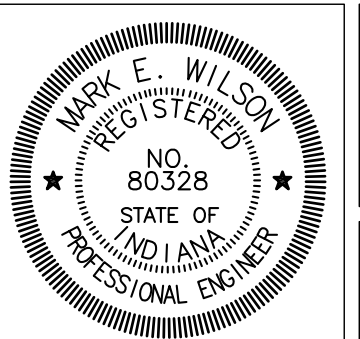
\$USERS \$ DATES \$ FILES \$ TIMES \$

**JONES PETRIE RAFINSKI**  
your one single source

Surveying • Engineering • Planning • Architecture • Utility Management  
GIS • Environmental • Renewable Energy • Landscape Architecture

Elkhart, Indiana    South Bend, Indiana    Fort Wayne, Indiana  
p: 574.293.7762    p: 574.232.4388    p: 260.422.2522

*Mark E. Wilson*    1/6/2016  
SIGNATURE    DATE



CITY OF SOUTH BEND, INDIANA  
ROUNDABOUT INTERSECTION AT  
MICHIGAN ST. AND CHIPPEWA AVE.

**ROUNDABOUT LAYOUT & DETAILS**

REVISIONS	HORIZONTAL SCALE	PROJECT NUMBER
2 EARTHWORK CALCULATIONS 01/25/2016	VERTICAL SCALE	<b>114-045</b>
DRAWN: RJH	SURVEY BOOK	SHEETS
CHECKED: CRC	DATE	<b>67</b> OF <b>97</b>
	Oct. 15, 2015	