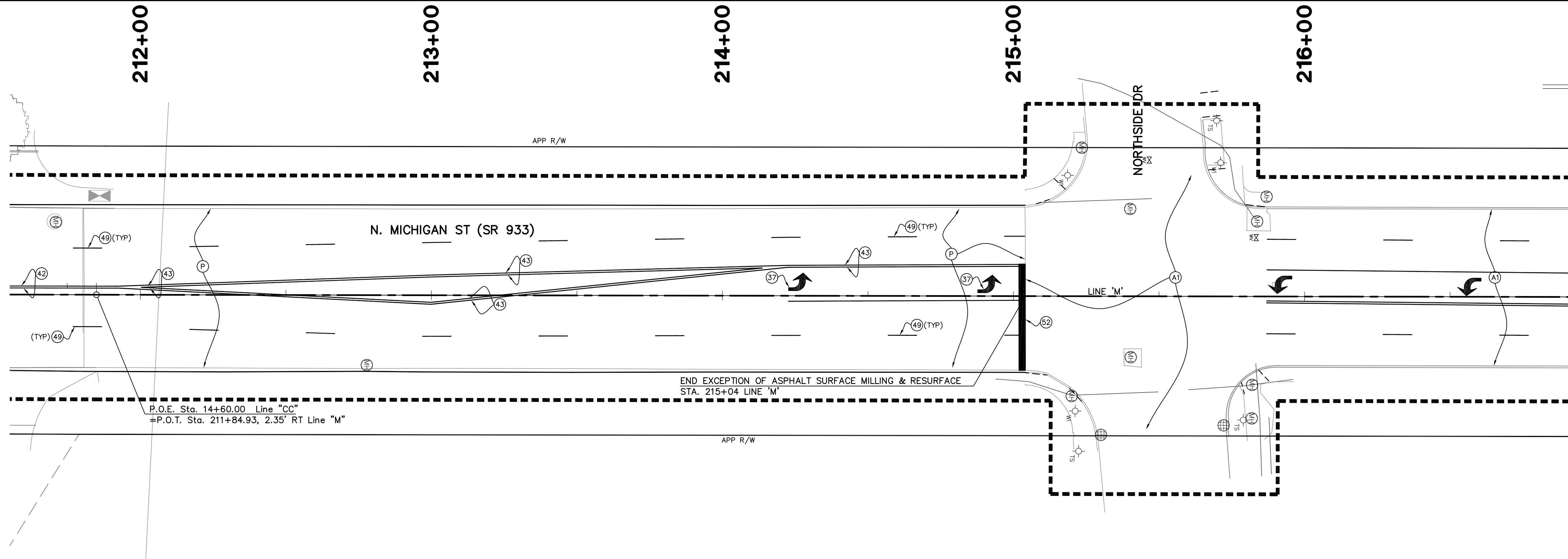


- LEGEND**
- (A1) 1.5" SURFACE MILLING AND RESURFACE WITH 165#/SYD QC/QA-HMA, 4, 76, SURFACE, 9.5mm, ON TACK COAT OVER MILLED ASPHALT SURFACE
 - (F) SIDEWALK, CONCRETE, 5 IN ON COMPACTED SUBGRADE
 - (B) CURB RAMP, CONCRETE, 6
 - (C) CURB RAMP, CONCRETE, 6
 - (PR) PROTECT
 - (15) CURB, CONCRETE, 6 IN
 - (23) NEAT LINE SAW CUT
 - (26) SODDING
 - (PR) PROTECT
 - (R) REMOVE
 - (36) PAVEMENT MESSAGE MARKING, THERMOPLASTIC PAINT, LANE INDICATION ARROW
 - (37) PAVEMENT MESSAGE MARKING, EPOXY PAINT, LANE INDICATION ARROW
 - (42) LINE, THERMOPLASTIC PAINT, SOLID, YELLOW, 4 IN
 - (43) LINE, EPOXY PAINT, SOLID, YELLOW, 4 IN
 - (46) LINE, THERMOPLASTIC PAINT, SOLID, WHITE, 4 IN
 - (47) LINE, EPOXY PAINT, SOLID, WHITE, 4 IN
 - (48) LINE, THERMOPLASTIC PAINT, BROKEN, WHITE, 4 IN
 - (49) LINE, EPOXY PAINT, BROKEN, WHITE, 4 IN
 - (51) TRANSVERSE MARKING, THERMOPLASTIC PAINT, WHITE, STOP LINE, 24 IN
 - (52) TRANSVERSE MARKING, EPOXY PAINT, WHITE, STOP LINE, 24 IN
 - (53) TRANSVERSE MARKING, THERMOPLASTIC PAINT, WHITE, CROSS WALK, 6 IN



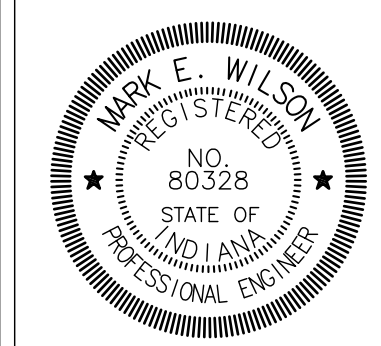
1	MICHIGAN ST ADDITIONAL MILL AND RESURFACING PLANS	MEW	1/16/2016
REV.	DESCRIPTION	BY	DATE

The concepts, designs, plans, details and other information as shown on this document are the sole property of JPR and were created, developed, and presented for use on this specific project. None of the concepts, designs, plans, details or other information hereon shall be used or disseminated without the expressed written permission of JPR. © 2016 JPR - All Rights Reserved.

JONES PETRIE RAFINSKI
 your one single source

Surveying • Engineering • Planning • Architecture • Utility Management
 GIS • Environmental • Renewable Energy • Landscape Architecture

Elkhart, Indiana South Bend, Indiana Fort Wayne, Indiana
 p: 574.293.7762 p: 574.232.4388 p: 260.422.2522



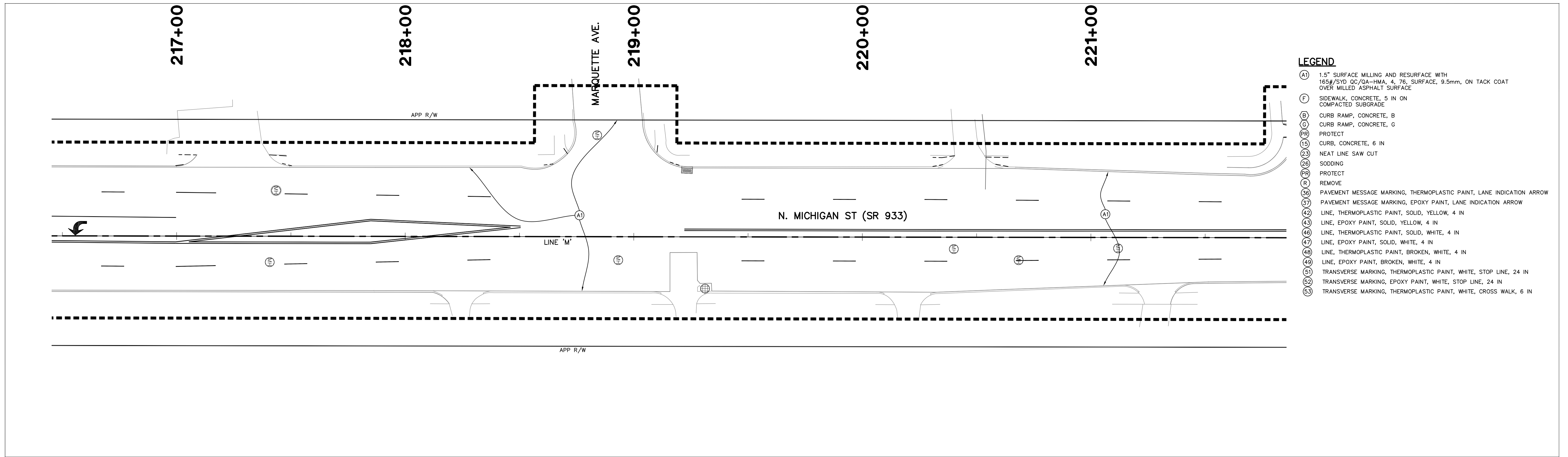
RECOMMENDED FOR APPROVAL	<i>Mark E. Wilson</i>	1/13/2016	
DESIGNED:	C.R.C.	DRAWN:	R.J.H.
CHECKED:	B.B.K.	CHECKED:	M.E.W.

CITY OF SOUTH BEND
 BARTLETT ST IMPROVEMENTS PHASE II

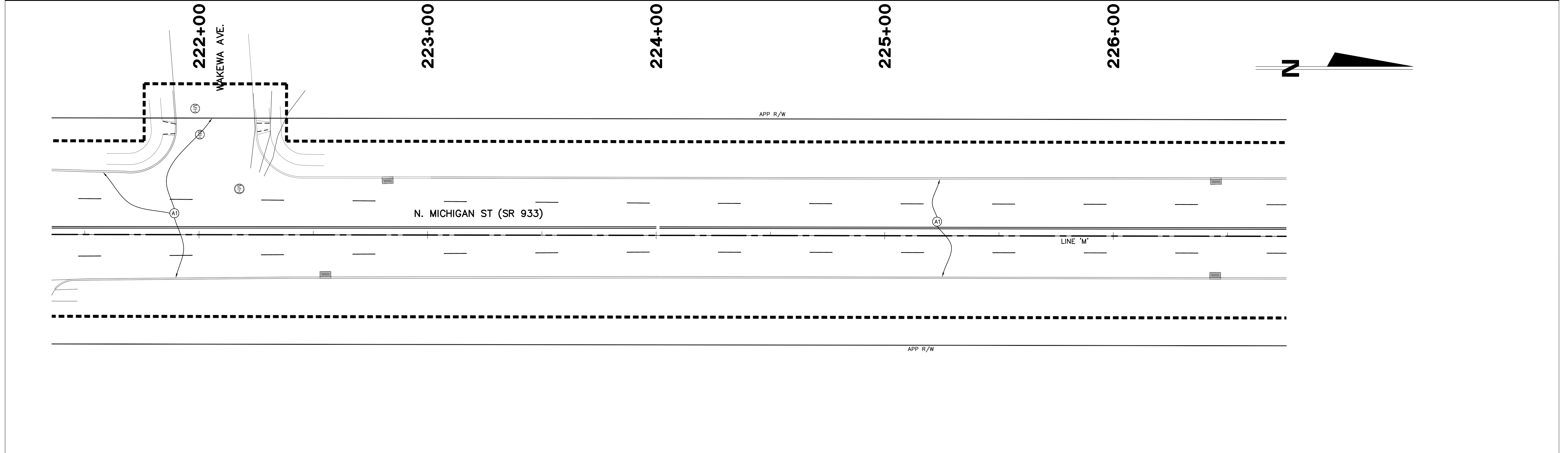
LINE 'M' - MICHIGAN ST (SR 933)
 SURFACE MILLING & RESURFACE PLAN

HORIZONTAL SCALE	BRIDGE FILE
1" = 20'	
VERTICAL SCALE	DESIGNATION
SURVEY BOOK	SHEETS
	20A of 55
CONTRACT	PROJECT
	114-032B

H:\2014 Projects\2014-0983\ENR\2017\Addendum #1\MillResurfacingLineMichigan.dwg, 1/16/2016 12:14:31 PM



- LEGEND**
- (A1) 1.5" SURFACE MILLING AND RESURFACE WITH 165#/SYD QC/QA-HMA, 4, 76, SURFACE, 9.5mm, ON TACK COAT OVER MILLED ASPHALT SURFACE
 - (F) SIDEWALK, CONCRETE, 5 IN ON COMPACTED SUBGRADE
 - (B) CURB RAMP, CONCRETE, B
 - (C) CURB RAMP, CONCRETE, C
 - (PR) PROTECT
 - (15) CURB, CONCRETE, 6 IN
 - (23) NEAT LINE SAW CUT
 - (26) SODDING
 - (PR) PROTECT
 - (R) REMOVE
 - (36) PAVEMENT MESSAGE MARKING, THERMOPLASTIC PAINT, LANE INDICATION ARROW
 - (37) PAVEMENT MESSAGE MARKING, EPOXY PAINT, LANE INDICATION ARROW
 - (42) LINE, THERMOPLASTIC PAINT, SOLID, YELLOW, 4 IN
 - (43) LINE, EPOXY PAINT, SOLID, YELLOW, 4 IN
 - (46) LINE, THERMOPLASTIC PAINT, SOLID, WHITE, 4 IN
 - (47) LINE, EPOXY PAINT, SOLID, WHITE, 4 IN
 - (48) LINE, THERMOPLASTIC PAINT, BROKEN, WHITE, 4 IN
 - (49) LINE, EPOXY PAINT, BROKEN, WHITE, 4 IN
 - (51) TRANSVERSE MARKING, THERMOPLASTIC PAINT, WHITE, STOP LINE, 24 IN
 - (52) TRANSVERSE MARKING, EPOXY PAINT, WHITE, STOP LINE, 24 IN
 - (53) TRANSVERSE MARKING, THERMOPLASTIC PAINT, WHITE, CROSS WALK, 6 IN



REV.	DESCRIPTION	BY	DATE
1	MICHIGAN ST ADDITIONAL MILL AND RESURFACING PLANS	MEW	1/16/2016

The concepts, designs, plans, details and other information as shown on this document are the sole property of JPR and were created, developed, and presented for use on this specific project. None of the concepts, designs, plans, details or other information hereon shall be used or disseminated without the expressed written permission of JPR. © 2016 JPR - All Rights Reserved.

JONES PETRIE RAFINSKI
your one single source

Surveying • Engineering • Planning • Architecture • Utility Management
GIS • Environmental • Renewable Energy • Landscape Architecture

Elkhart, Indiana South Bend, Indiana Fort Wayne, Indiana
p: 574.293.7762 p: 574.232.4388 p: 260.422.2522



RECOMMENDED FOR APPROVAL	<i>Mark E. Wilson</i>	1/13/2016	DATE
DESIGNED:	C.R.C.	DRAWN:	R.J.H.
CHECKED:	B.B.K.	CHECKED:	M.E.W.

CITY OF SOUTH BEND
BARTLETT ST IMPROVEMENTS PHASE II

LINE 'M' - MICHIGAN ST (SR 933)
SURFACE MILLING & RESURFACE PLAN

HORIZONTAL SCALE	BRIDGE FILE
1" = 20'	DESIGNATION
VERTICAL SCALE	-
SURVEY BOOK	SHEETS
-	20B of 55
CONTRACT	PROJECT
-	114-032B

H:\2014 Projects\2014-5083\EMV-2017\Addendum #1\MillResurfacingLineM_Michigan.dwg, 1/14/2016 12:14:59 PM

227+00

228+00

229+00

230+00

231+00

APP R/W

N. MICHIGAN ST (SR 933)

LINE 'M'

APP R/W

LEGEND

- (A1) 1.5" SURFACE MILLING AND RESURFACE WITH 165#/SYD QC/QA-HMA, 4, 76, SURFACE, 9.5mm, ON TACK COAT OVER MILLED ASPHALT SURFACE
- (F) SIDEWALK, CONCRETE, 5 IN ON COMPACTED SUBGRADE
- (B) CURB RAMP, CONCRETE, B
- (C) CURB RAMP, CONCRETE, G
- (PR) PROTECT
- (15) CURB, CONCRETE, 6 IN
- (23) NEAT LINE SAW CUT
- (26) SODDING
- (PR) PROTECT
- (R) REMOVE
- (36) PAVEMENT MESSAGE MARKING, THERMOPLASTIC PAINT, LANE INDICATION ARROW
- (37) PAVEMENT MESSAGE MARKING, EPOXY PAINT, LANE INDICATION ARROW
- (42) LINE, THERMOPLASTIC PAINT, SOLID, YELLOW, 4 IN
- (43) LINE, EPOXY PAINT, SOLID, YELLOW, 4 IN
- (46) LINE, THERMOPLASTIC PAINT, SOLID, WHITE, 4 IN
- (47) LINE, EPOXY PAINT, SOLID, WHITE, 4 IN
- (48) LINE, THERMOPLASTIC PAINT, BROKEN, WHITE, 4 IN
- (49) LINE, EPOXY PAINT, BROKEN, WHITE, 4 IN
- (51) TRANSVERSE MARKING, THERMOPLASTIC PAINT, WHITE, STOP LINE, 24 IN
- (52) TRANSVERSE MARKING, EPOXY PAINT, WHITE, STOP LINE, 24 IN
- (53) TRANSVERSE MARKING, THERMOPLASTIC PAINT, WHITE, CROSS WALK, 6 IN

232+00

233+00

234+00

235+00

236+00

POKAGON ST

APP R/W

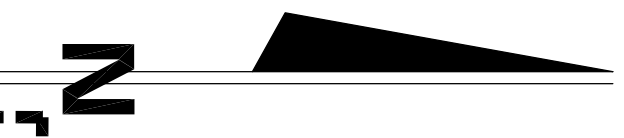
N. MICHIGAN ST (SR 933)

LINE 'M'

APP R/W

POKAGON ST.

ANGELA BLVD.



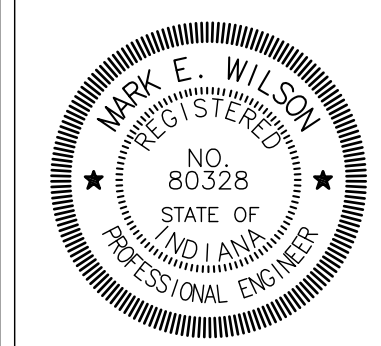
END ASPHALT SURFACE MILLING & RESURFACE STA. 236+27 LINE 'M'

REV	DESCRIPTION	MEV	DATE
1	MICHIGAN ST ADDITIONAL MILL AND RESURFACING PLANS		1/16/2016
<small>The concepts, designs, plans, details and other information as shown on this document are the sole property of JPR and were created, developed, and presented for use on this specific project. None of the concepts, designs, plans, details or other information hereon shall be used or disseminated without the expressed written permission of JPR. © 2016 JPR - All Rights Reserved.</small>			

JONES PETRIE RAFINSKI
your one single source

Surveying • Engineering • Planning • Architecture • Utility Management
GIS • Environmental • Renewable Energy • Landscape Architecture

Elkhart, Indiana South Bend, Indiana Fort Wayne, Indiana
p: 574.293.7762 p: 574.232.4388 p: 260.422.2522



RECOMMENDED FOR APPROVAL	<i>Mark E. Wilson</i>	1/13/2016	
DESIGNED:	C.R.C.	DRAWN:	R.J.H.
CHECKED:	B.B.K.	CHECKED:	M.E.W.

CITY OF SOUTH BEND
BARTLETT ST IMPROVEMENTS PHASE II

LINE 'M' - MICHIGAN ST (SR 933)
SURFACE MILLING & RESURFACE PLAN

HORIZONTAL SCALE	BRIDGE FILE
1" = 20'	
VERTICAL SCALE	DESIGNATION
SURVEY BOOK	SHEETS
	20C of 55
CONTRACT	PROJECT
	114-032B

H:\2014 Projects\2014-5083\ENG\2017\Addendum #1\millresurfacingLineMichigan.dwg, 1/14/2016 12:13:54 PM