

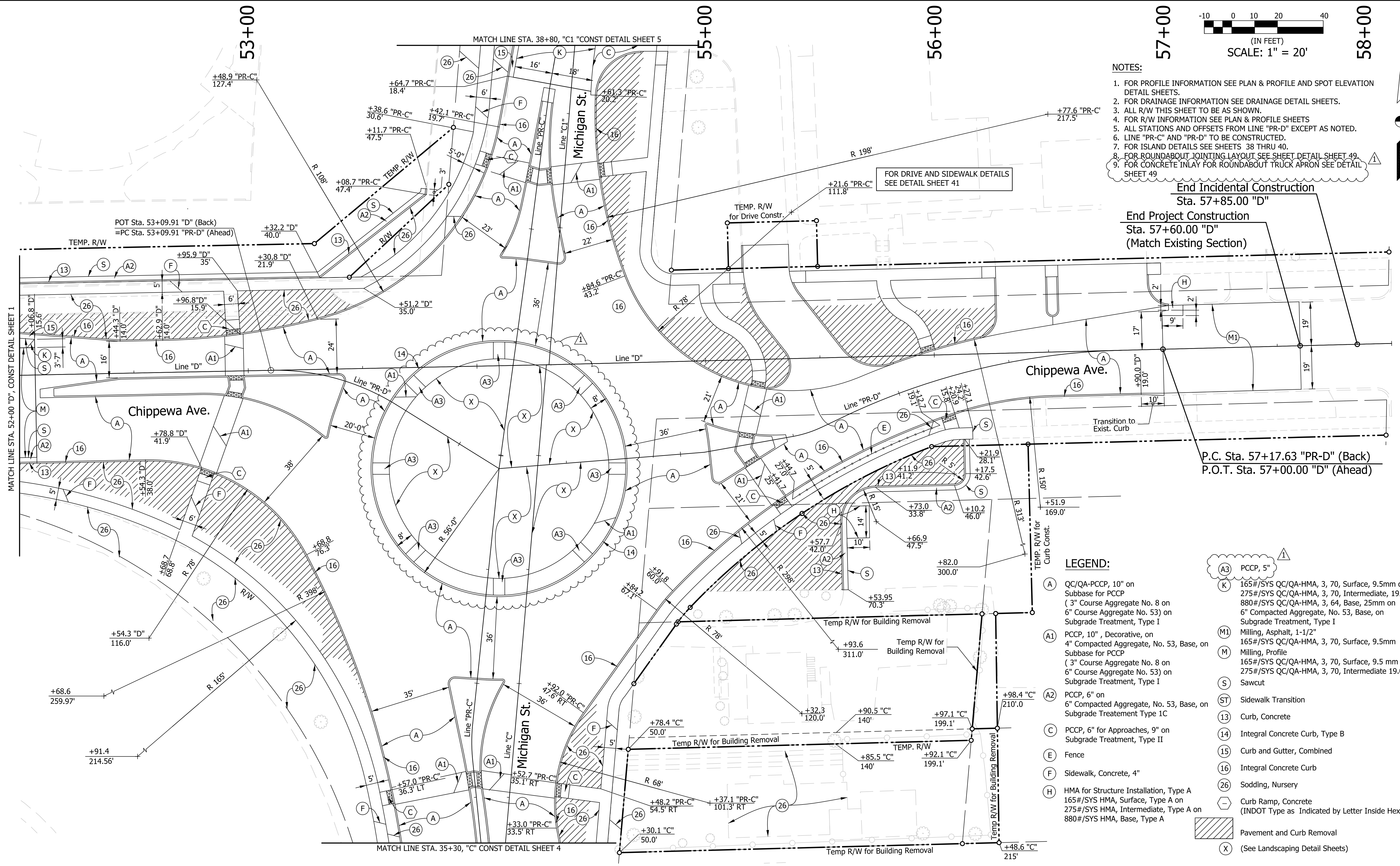


(IN FEET)
SCALE: 1" = 20'

- NOTES:**
1. FOR PROFILE INFORMATION SEE PLAN & PROFILE AND SPOT ELEVATION DETAIL SHEETS.
 2. FOR DRAINAGE INFORMATION SEE DRAINAGE DETAIL SHEETS.
 3. ALL R/W THIS SHEET TO BE AS SHOWN.
 4. FOR R/W INFORMATION SEE PLAN & PROFILE SHEETS
 5. ALL STATIONS AND OFFSETS FROM LINE "PR-D" EXCEPT AS NOTED.
 6. LINE "PR-C" AND "PR-D" TO BE CONSTRUCTED.
 7. FOR ISLAND DETAILS SEE SHEETS 38 THRU 40.
 8. FOR ROUNDABOUT JOINTING LAYOUT SEE SHEET DETAIL SHEET 49.
 9. FOR CONCRETE INLAY FOR ROUNDABOUT TRUCK APRON SEE DETAIL SHEET 49.

End Incidental Construction
Sta. 57+85.00 "D"

End Project Construction
Sta. 57+60.00 "D"
(Match Existing Section)



LEGEND:

- (A) QC/QA-PCCP, 10" on Subbase for PCCP (3" Course Aggregate No. 8 on 6" Course Aggregate No. 53) on Subgrade Treatment, Type I
- (A1) PCCP, 10", Decorative, on 4" Compacted Aggregate, No. 53, Base, on Subbase for PCCP (3" Course Aggregate No. 8 on 6" Course Aggregate No. 53) on Subgrade Treatment, Type I
- (A2) PCCP, 6" on 6" Compacted Aggregate, No. 53, Base, on Subgrade Treatment Type 1C
- (C) PCCP, 6" for Approaches, 9" on Subgrade Treatment, Type II
- (E) Fence
- (F) Sidewalk, Concrete, 4"
- (H) HMA for Structure Installation, Type A 165#/SYS HMA, Surface, Type A on 275#/SYS HMA, Intermediate, Type A on 880#/SYS HMA, Base, Type A
- (A3) PCCP, 5"
- (K) 165#/SYS QC/QA-HMA, 3, 70, Surface, 9.5mm on 275#/SYS QC/QA-HMA, 3, 70, Intermediate, 19.0mm on 880#/SYS QC/QA-HMA, 3, 64, Base, 25mm on 6" Compacted Aggregate, No. 53) on Subgrade Treatment, Type I
- (M1) Milling, Asphalt, 1-1/2"
- (M) Milling, Profile
- (S) 165#/SYS QC/QA-HMA, 3, 70, Surface, 9.5 mm on 275#/SYS QC/QA-HMA, 3, 70, Intermediate 19.0mm Sawcut
- (ST) Sidewalk Transition
- (13) Curb, Concrete
- (14) Integral Concrete Curb, Type B
- (15) Curb and Gutter, Combined
- (16) Integral Concrete Curb
- (26) Sodding, Nursery
- (Hexagon) Curb Ramp, Concrete (INDOT Type as Indicated by Letter Inside Hexagon)
- (Hatched) Pavement and Curb Removal
- (X) (See Landscaping Detail Sheets)

1/14/2016 1:02:29:34 AM P:\140109 - Chippewa Ave Roundabout\06 Road\DCN\Plans\140109_24-Detail.03.dgn

Plans Prepared By:

Beam, Longest and Neff, LLC
Consulting Engineers, Land Surveyors,
Land Planners & Landscape Architects

8126 Castleton Road, Indianapolis, IN 46250
Phone: 317.849.5832 Fax: 317.841.4281

Vance G. Epple
SIGNATURE

12/17/2015
DATE



CITY OF SOUTH BEND, INDIANA
ROUNDABOUT INTERSECTION AT
MICHIGAN ST. AND CHIPPEWA AVE.

CONSTRUCTION DETAIL #3
STA. 52+00 TO STA. 58+00 LINE "D"

REVISIONS	HORIZONTAL SCALE 1" = 20'	PROJECT NUMBER 114-045
	VERTICAL SCALE	
DRAWN: CDD	SURVEY BOOK	SHEETS
CHECKED: AJD	DATE Nov. 17, 2015	35 OF 97

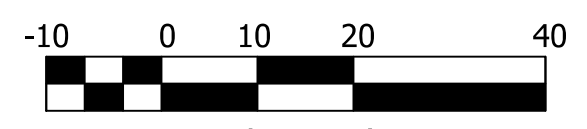
53+00

53+00

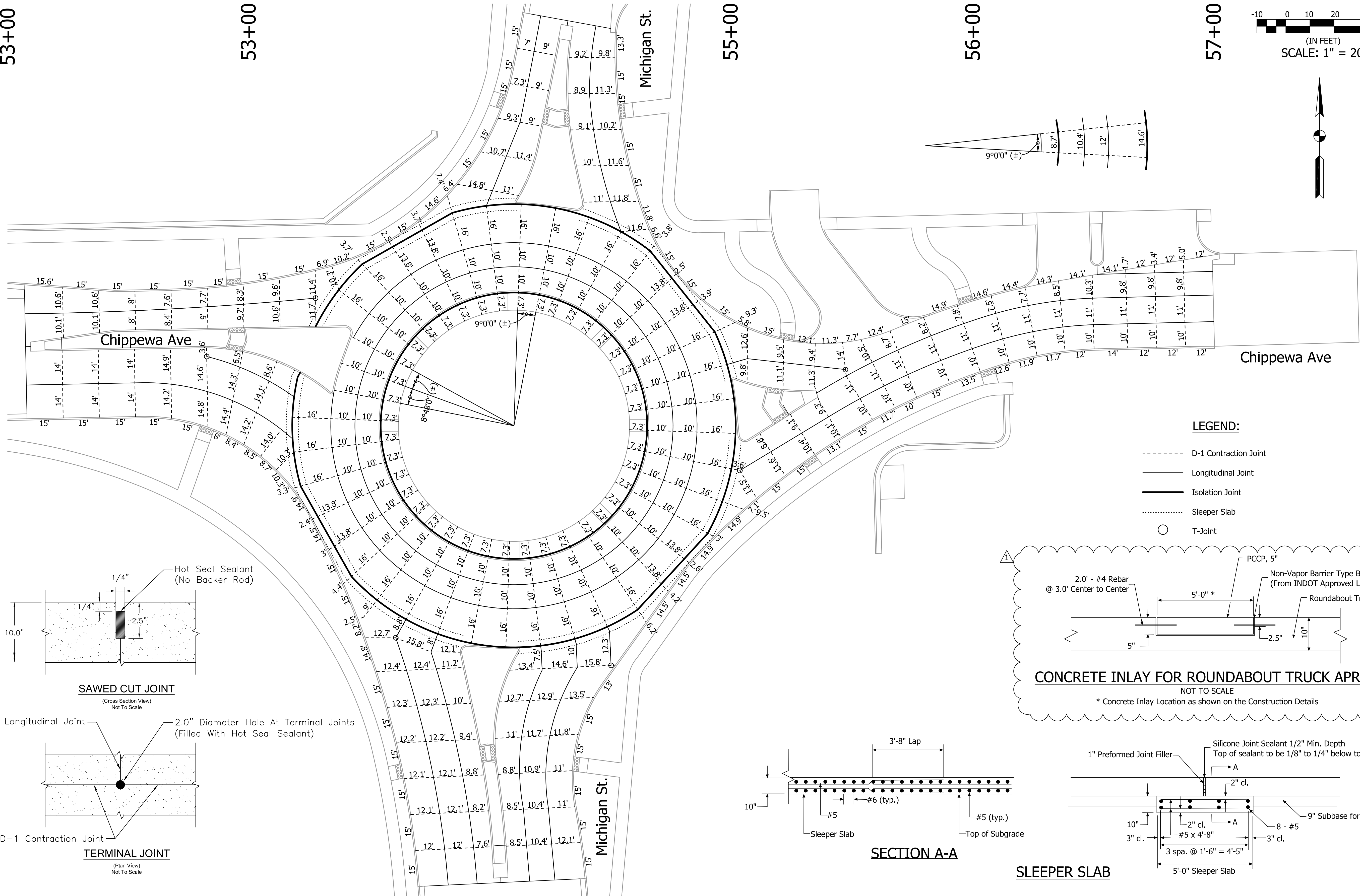
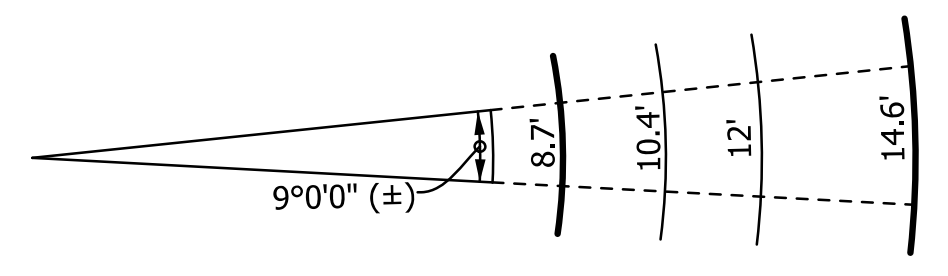
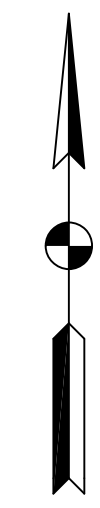
55+00

56+00

57+00

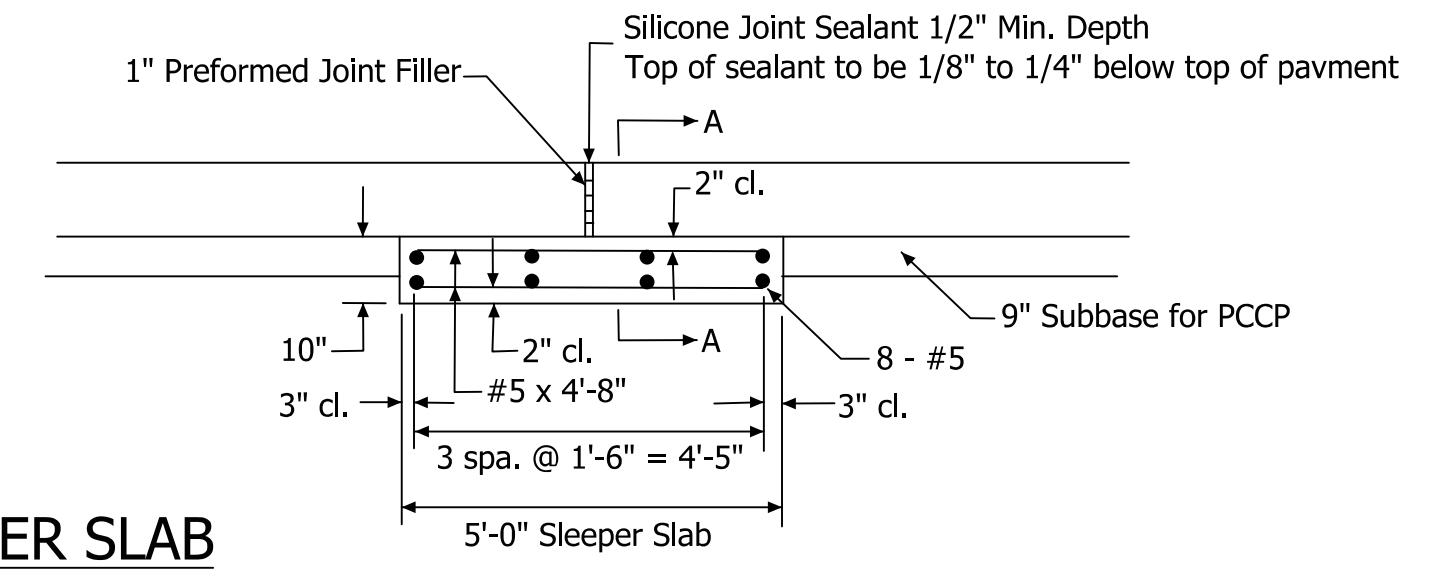
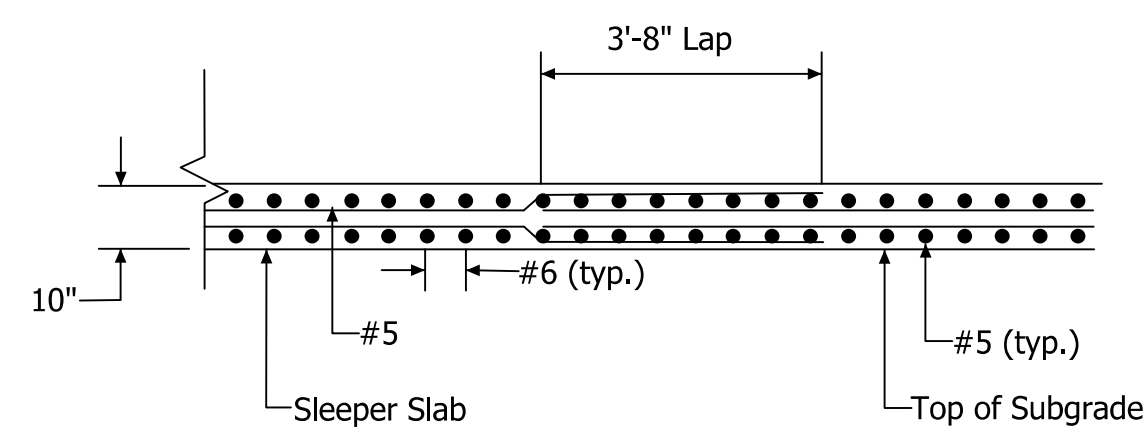
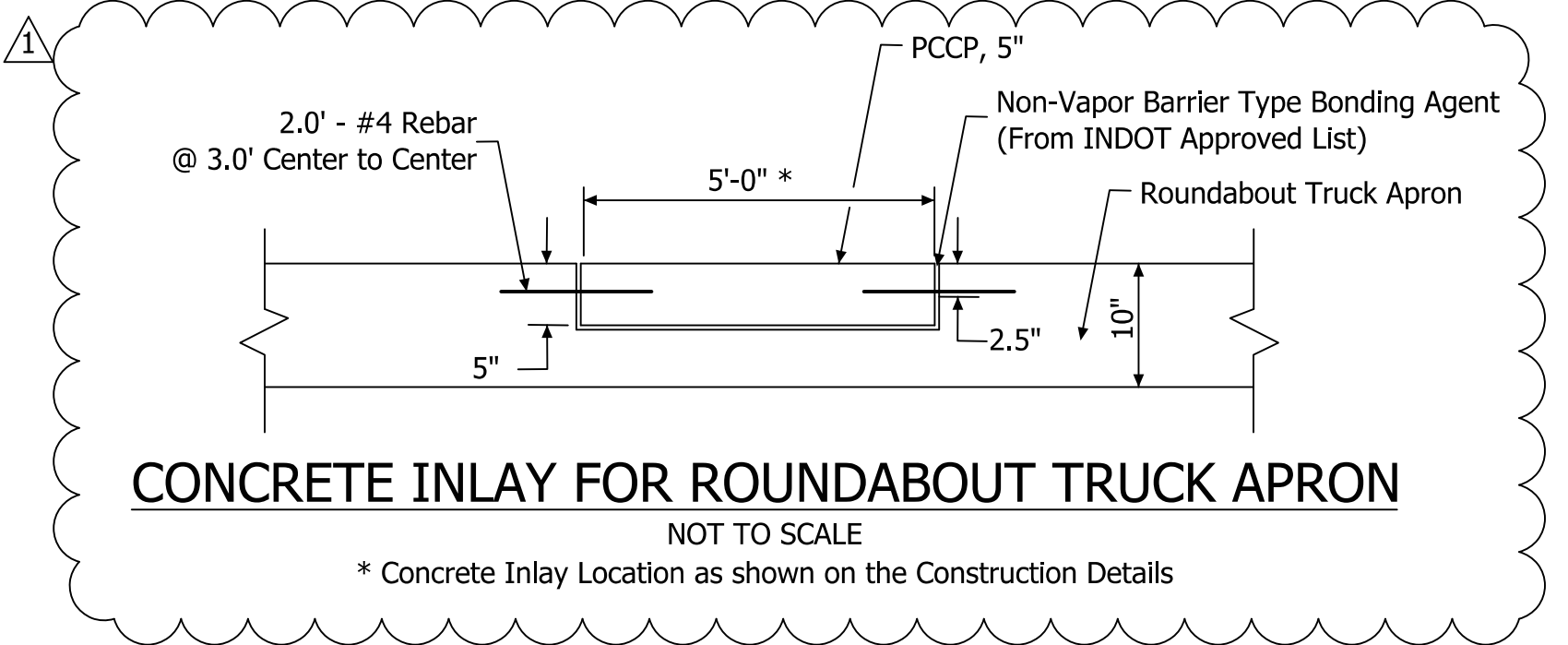
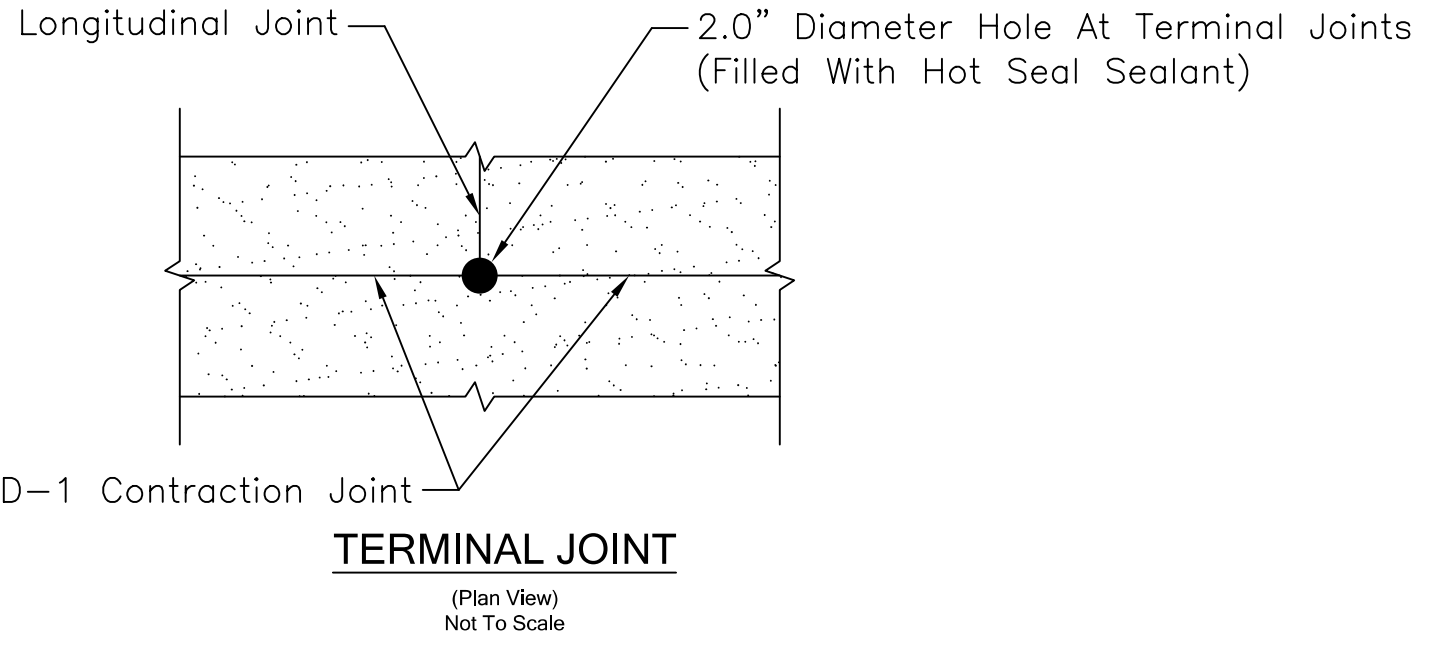
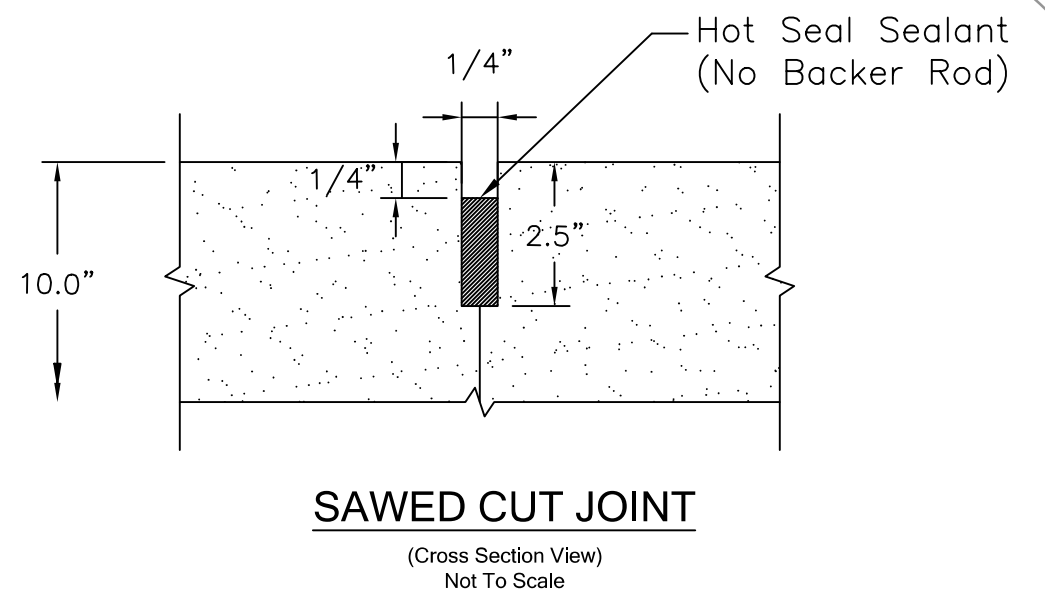


(IN FEET)
SCALE: 1" = 20'



LEGEND:

- D-1 Contraction Joint
- Longitudinal Joint
- Isolation Joint
- Sleeper Slab
- T-Joint



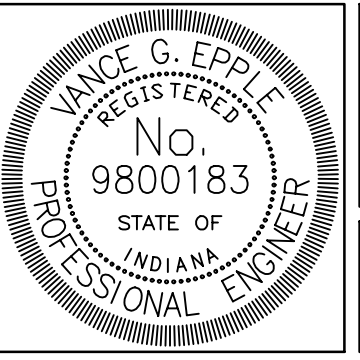
1/14/2016 10:29:37 AM P:\140109 - Chippewa Ave Roundabout\06 Road\DCN\Plans\140109_24_Joint_Detail.01.dgn

Plans Prepared By:

BLN Beam, Longest and Neff, LLC
Consulting Engineers, Land Surveyors,
Land Planners & Landscape Architects

8126 Castleton Road, Indianapolis, IN 46250 www.B-L-N.com
Phone: 317.849.5832 Fax: 317.841.4281

Vance G. Epple 12/17/2015
SIGNATURE DATE

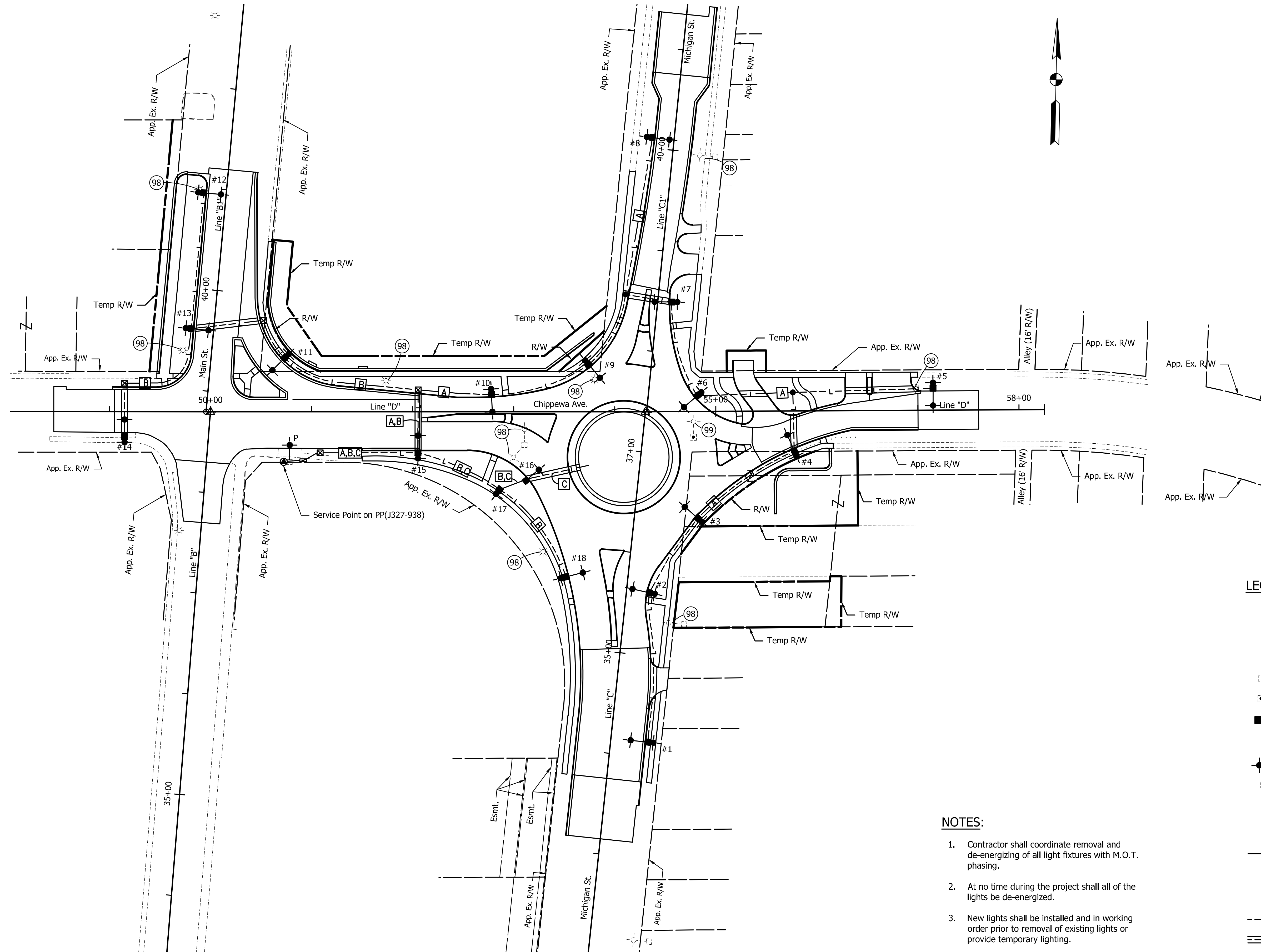


CITY OF SOUTH BEND, INDIANA
ROUNDABOUT INTERSECTION AT
MICHIGAN ST. AND CHIPPEWA AVE.

ROUNDABOUT JOINTING DETAIL

REVISIONS	HORIZONTAL SCALE 1" = 20'	PROJECT NUMBER 114-045
	VERTICAL SCALE	
DRAWN: NLC	SURVEY BOOK	SHEETS
CHECKED: AJD	DATE Nov. 17, 2015	49 OF 97

GDH - 1/14/2016 9:46 AM - U:\2014\201459_00_SBN_Chippewa\Cad\Addendum\AD_145900LT_PL01.dwg



LEGEND:

- 98 Remove Light (By Others)
- 99 Remove Light
- Existing Street Light
- Existing I&M-AEP Pole w/ Street Light
- Existing Signal Pole and Cantilever Street Light
- Street Light
- Pedestrian Light
- Street Light w/ Pedestrian Light
- Existing I&M-AEP Pole w/ Proposed Street Light
- Lighting Handhole
- Service Point, Sta. 50+75, 49.54' Rt. Line "D" (120/240 V, 1 Phase, 3 Wire)
- Lighting Circuit Designation
- Cable Marker: Exact Location to be Determined After Cable Duct Installation
- Tesco Control Panel, Sta. 50+91, 47' Rt. Line "D"
- Wire #4 in 2" Sch. 80 HDPE Conduit 1
- Wire #4 in 2" Sch. 80 HDPE Conduit

NOTES:

1. Contractor shall coordinate removal and de-energizing of all light fixtures with M.O.T. phasing.
2. At no time during the project shall all of the lights be de-energized.
3. New lights shall be installed and in working order prior to removal of existing lights or provide temporary lighting.

LFA
LAWSON-FISHER ASSOCIATES P.C.
525 W. WASHINGTON AVENUE
SOUTH BEND, INDIANA 46601
PH. (574) 234-3167

JEFFREY M. BYRD
REGISTERED PROFESSIONAL ENGINEER
No. 10606095
STATE OF INDIANA

Jeff M. Byrd
SIGNATURE DATE 1/5/16

**CITY OF SOUTH BEND, INDIANA
ROUNDAABOUT INTERSECTION AT
MICHIGAN ST. AND CHIPPEWA AVE.**

LIGHTING PLAN

<p>REVISIONS</p> <p>1 Addendum No. 1 1/15/16</p> <p>DRAWN: JAJ</p> <p>CHECKED: JDD</p>	<p>HORIZONTAL SCALE 1" = 50'</p> <p>VERTICAL SCALE</p> <p>SURVEY BOOK</p> <p>DATE NOVEMBER 2015</p>	<p>PROJECT NUMBER 114-045</p> <p>SHEETS 51 OF 97</p>
--	---	---