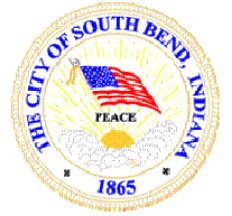


Curb & Sidewalk Funding

2013 & 2014



2013 Program	Funding Source	Amount
Curb & Sidewalk Program	MVH(202)/COIT(404)	\$680,000

2014 Program	Funding Source	Amount
Curb & Sidewalk Program	MVH(202)/COIT(404)	\$750,000
C&S Supplemental Program	MVH(202)/COIT(404)	\$350,000
Total		\$1,100,000



Curb & Sidewalk Funding

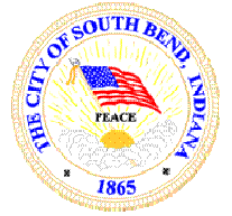
2015 Proposed(City Share)

2015 Initial Program	Funding Source	Amount
Curb & Sidewalk Program	MVH(202)/COIT(404)	\$750,000
Safe Routes to Schools	LRS(252)	\$350,000
Total		\$1,100,000

2015 Proposed Program	Funding Source	Amount
Curb & Sidewalk Program	MVH(202)/COIT(404)	\$750,000
C&S Supplemental Program	MVH(202)/COIT(404)	\$250,000
Cost Share Reimbursement	MVH(202)/COIT(404)	\$500,000
Safe Routes to Schools	LRS(252)	\$350,000
Total		\$1,850,000

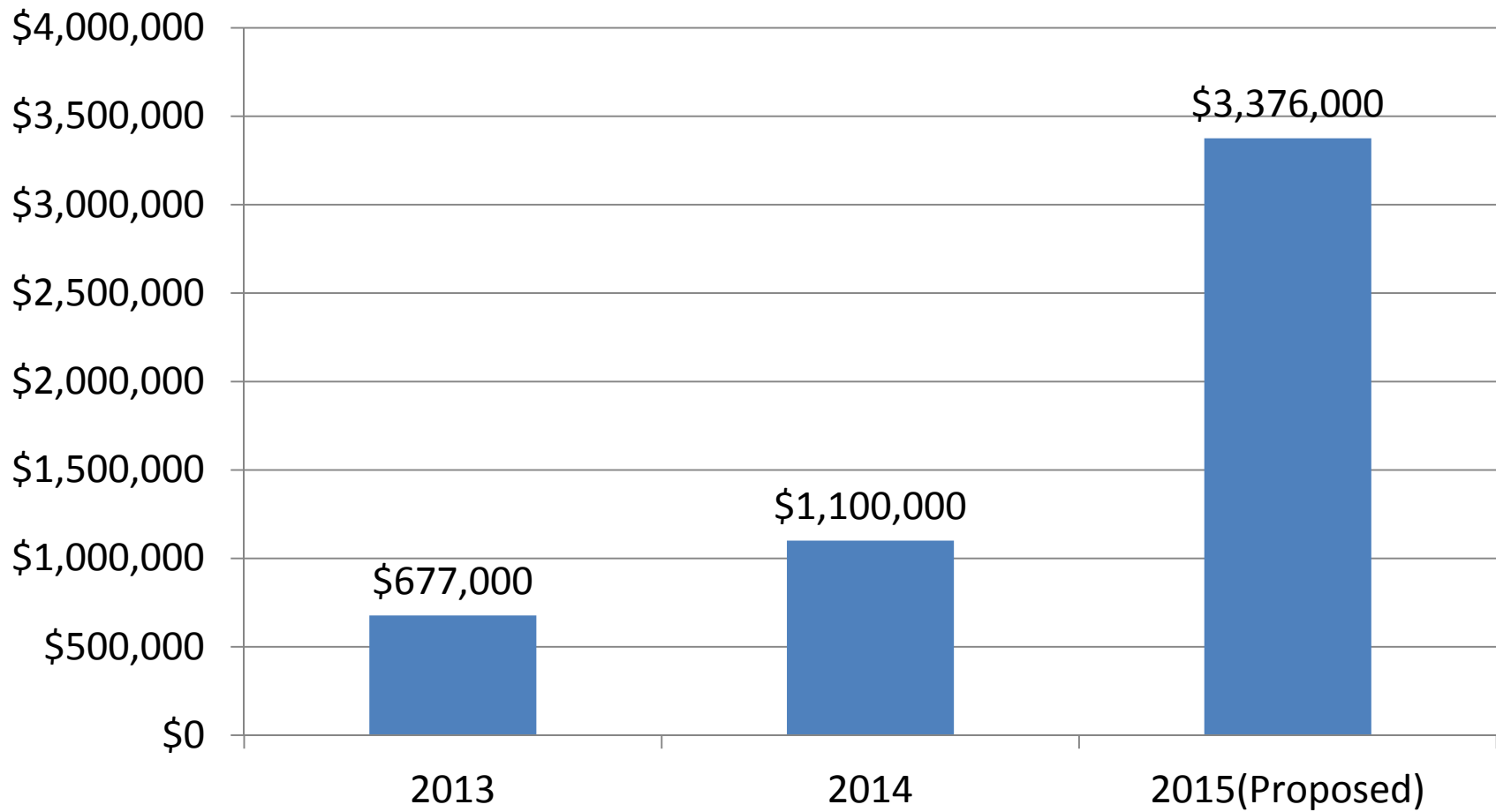
Curb & Sidewalk Funding

2013-2015



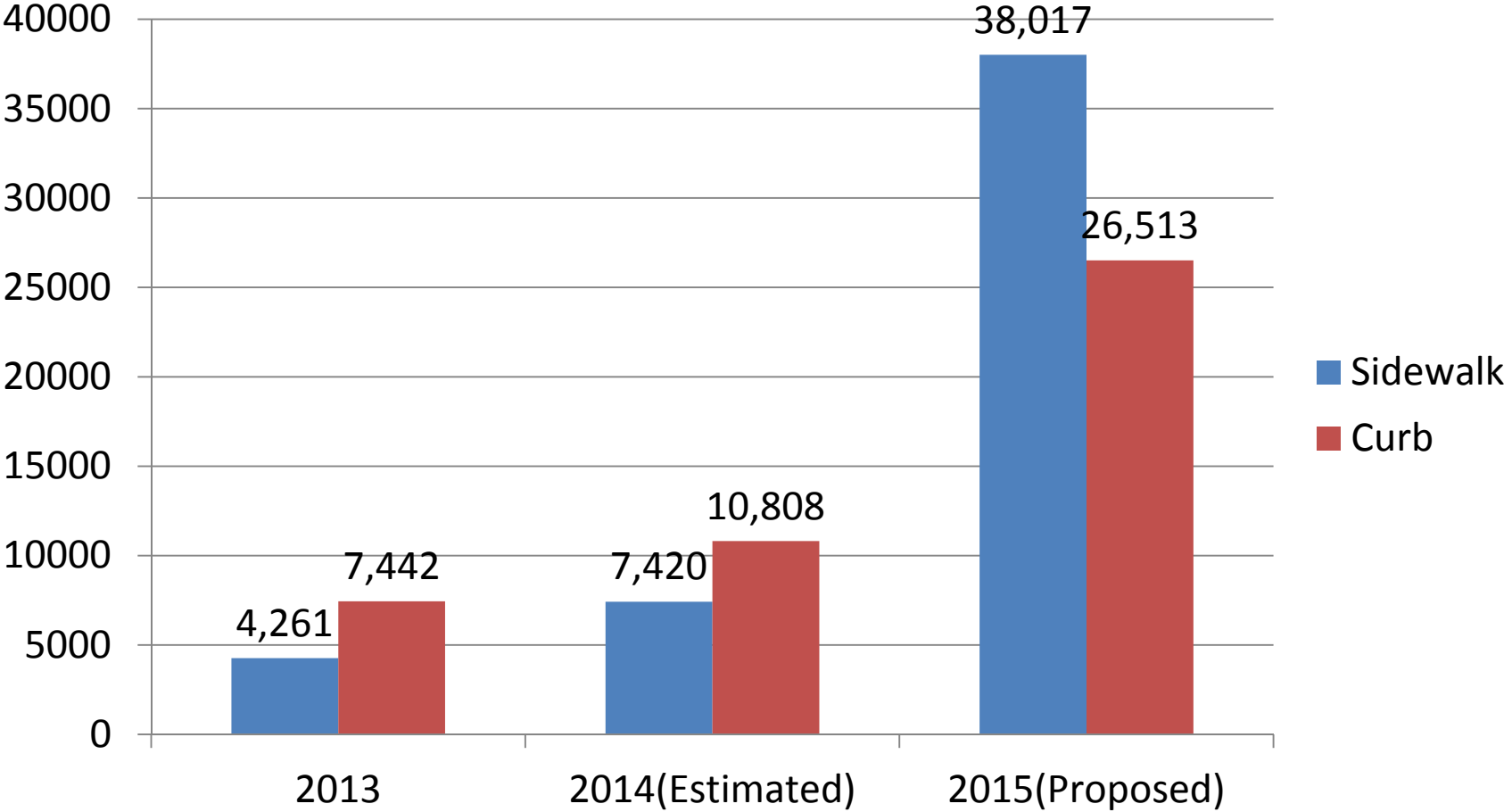
Year	Amount
2013	\$680,000
2014	\$1,100,000
2015(City Share)	\$1,850,000
2015(Including Fed Share)	\$3,376,000

Curb & Sidewalk Funding



Curb & Sidewalk

Lineal Feet





2015 Curb & Sidewalk

Council Allocated Program

- 2015 Program
 - Focus on Very Poor Condition
 - Council Helps Determine Locations
 - Minimum of Lot Width
 - Need list this Fall



Funding = \$1,000,000



2015 Curb & Sidewalk

Council Allocated Program

- 2015 Program
 - ~ 700 feet of Sidewalk per Council Member
 - ~ 900 feet of Curb per Council Member
 - In-house crew and publicly bid crew



Funding = \$1,000,000



Curb & Sidewalk

Cost Share Reimbursement Program

- 2015 Program
 - Homeowner Shares Cost
 - 70% Homeowner/30% City
 - Reimbursed \$20/lf Sidewalk
 - Reimbursed \$15/lf Curb and Gutter
 - Must be installed to City Specifications



Funding = \$500,000



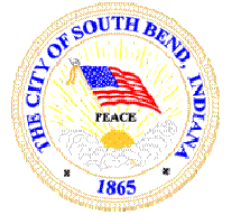
Safe Routes to Schools

Coquillard Primary HSIP Funding

- 9,000 feet of Sidewalk
- \$796,000
 - 80/20 split
- Serves neighborhood and pathways to school



Safe Routes to Schools



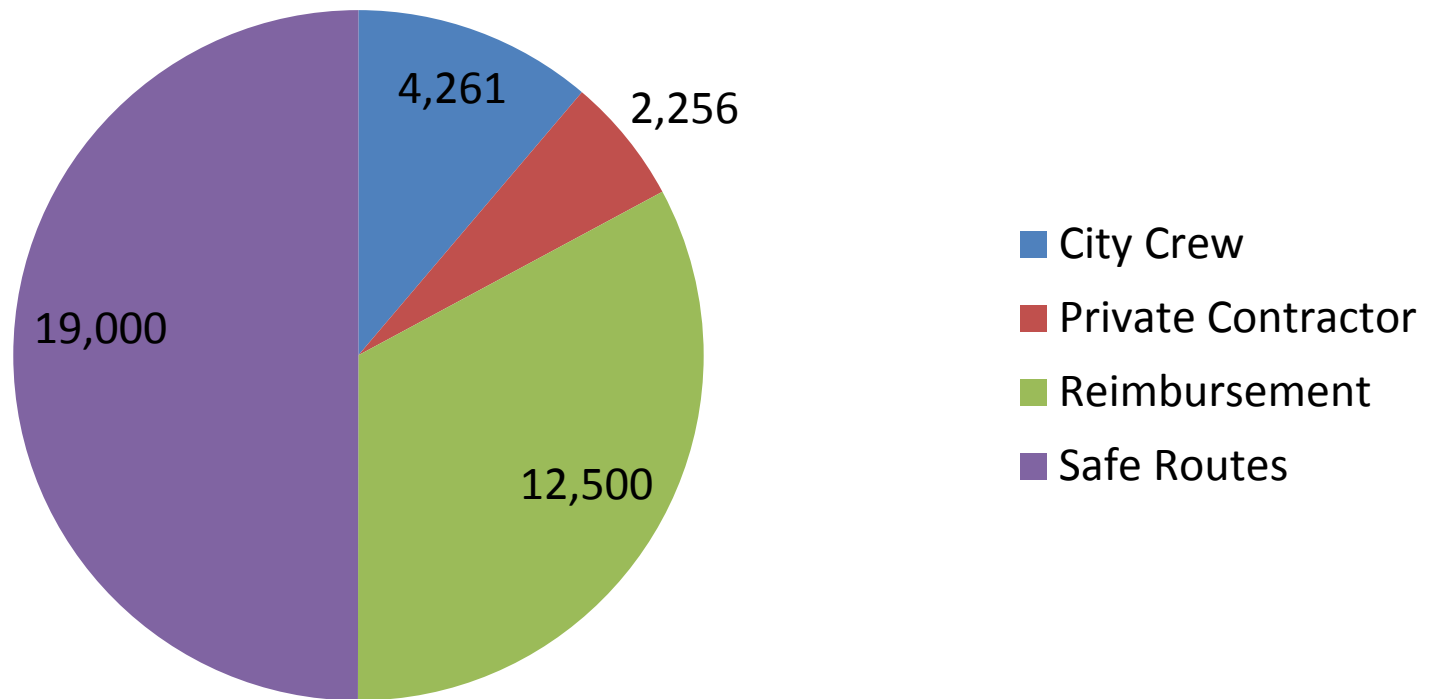
Harrison Primary HSIP Funding

- 10,000 feet of Sidewalk
- \$872,000
 - 80/20 split
- Serves neighborhood and pathways to school



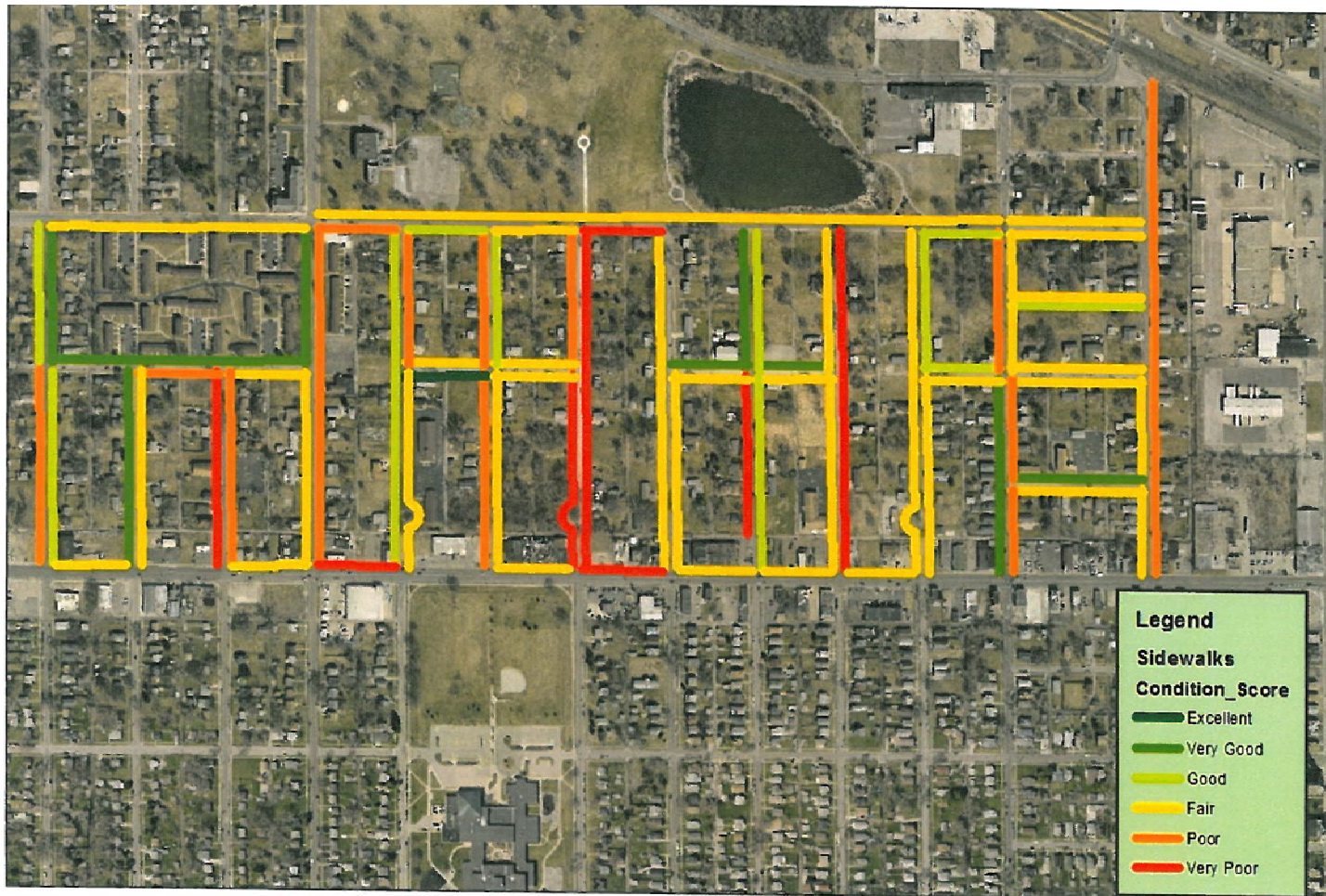
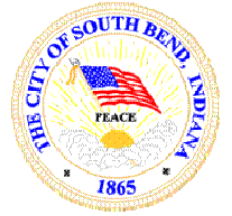
2015 Proposed Sidewalk Program

Feet of Sidewalk

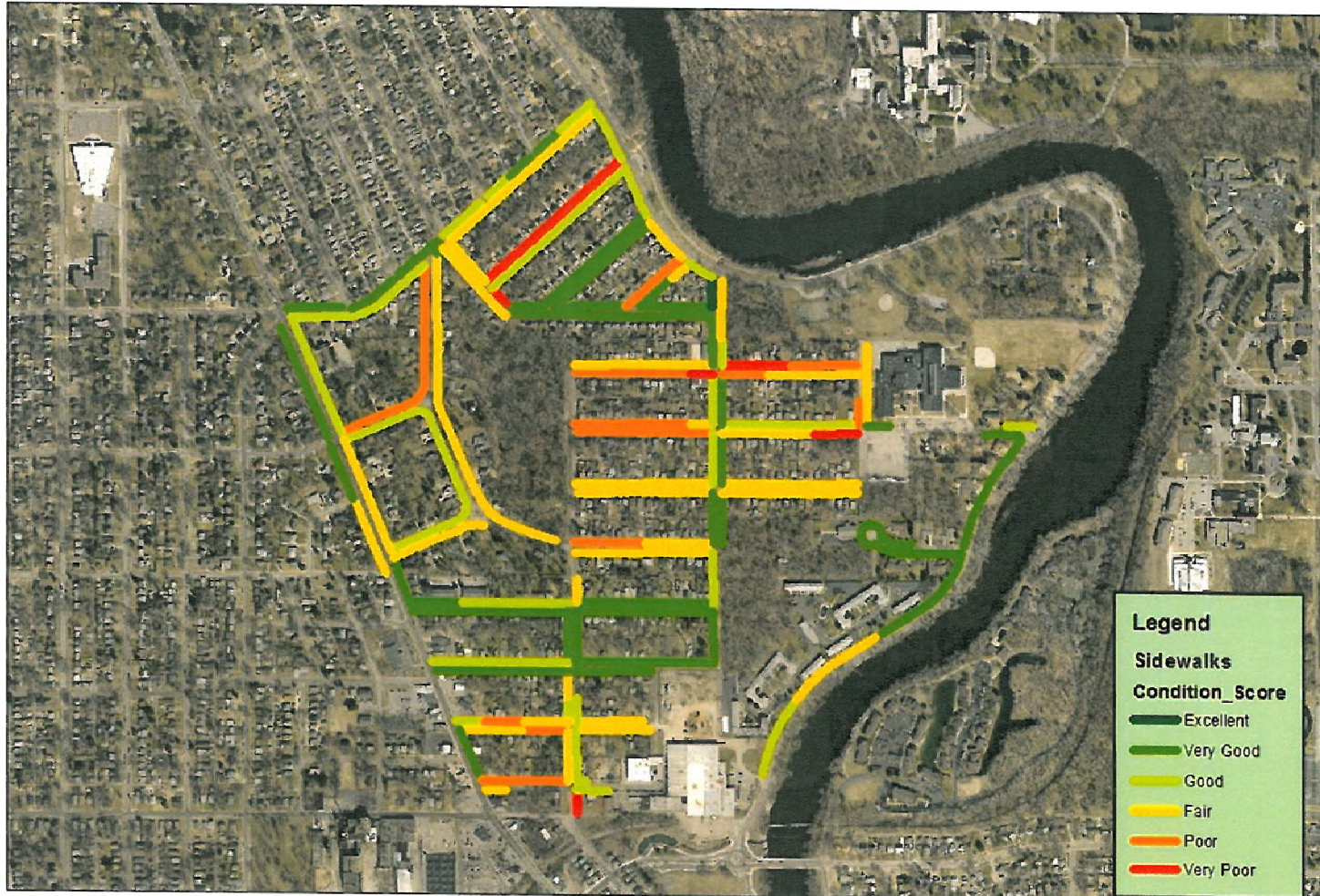
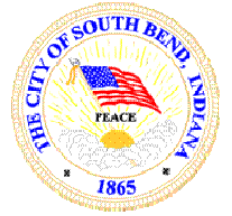


Curb & Sidewalk

LaSalle Park



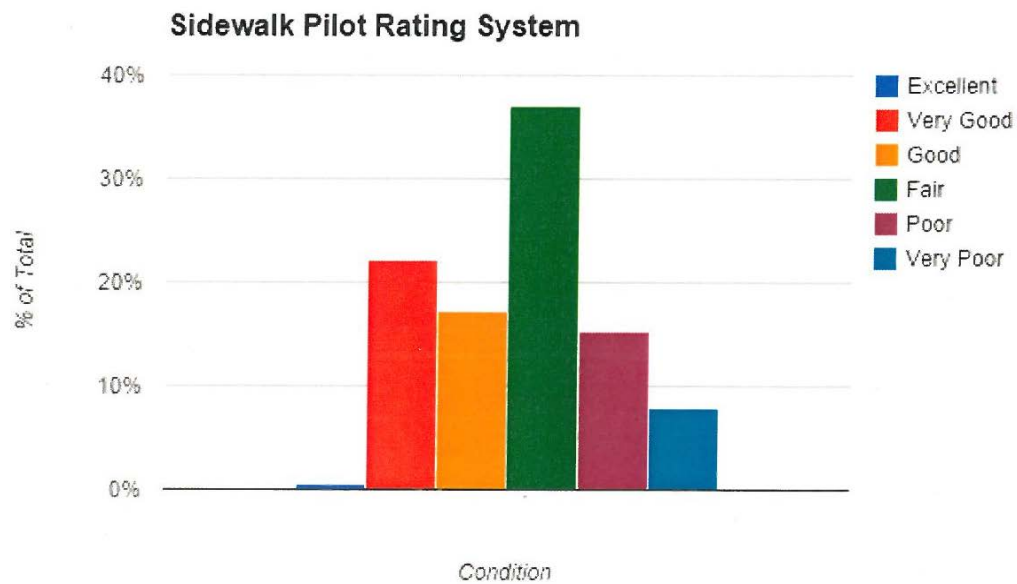
Curb & Sidewalk Keller Park



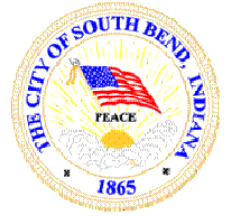
Curb & Sidewalk Condition Analysis



Rating	Range	% of Total
Excellent	0-5	1%
Very Good	6-10	22%
Good	11-20	17%
Fair	21-40	37%
Poor	41-60	15%
Very Poor	61+	8%



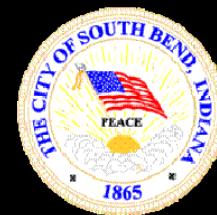
Curb & Sidewalk Program



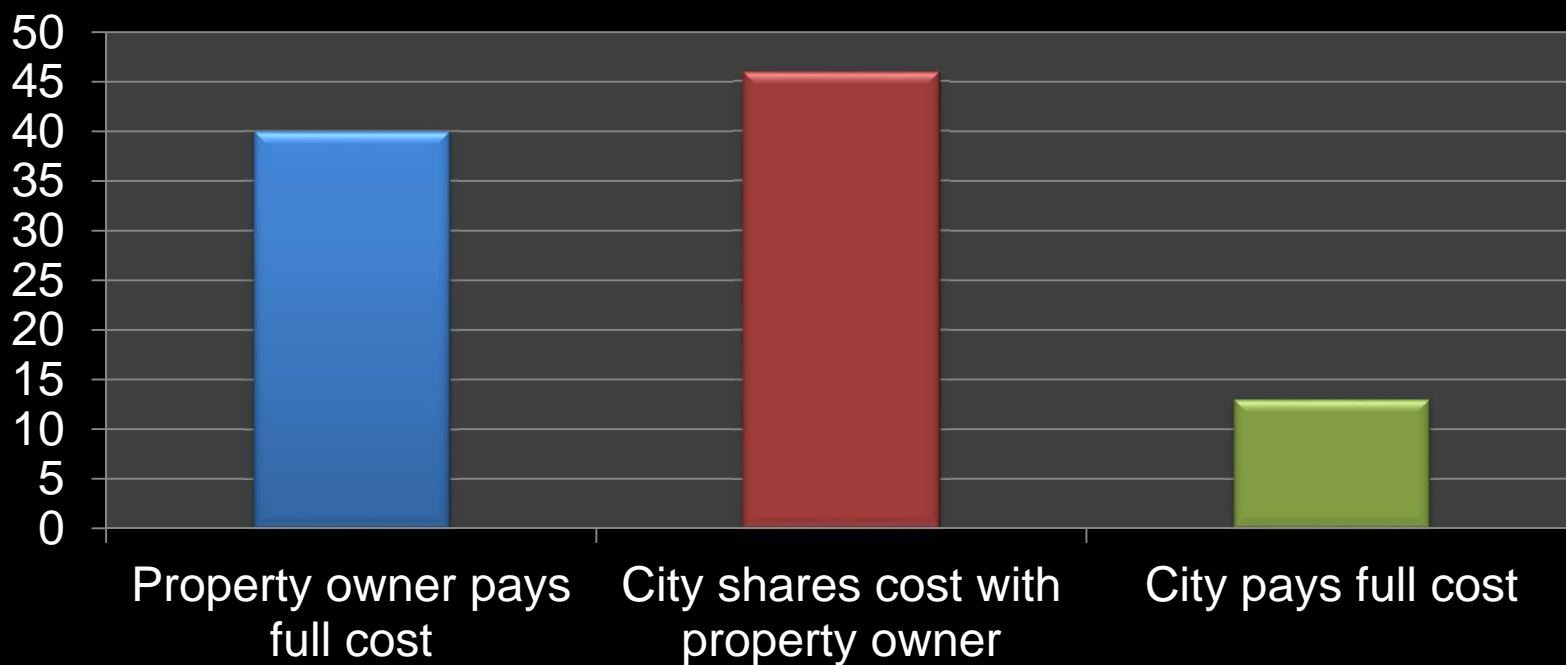
750 Miles Citywide

**~ 300,000 Feet in
Very Poor Condition**

**~ 600,000 Feet in
Poor Condition**



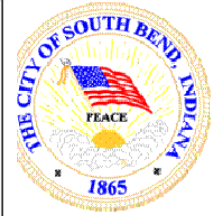
How do cities pay for sidewalk repair?



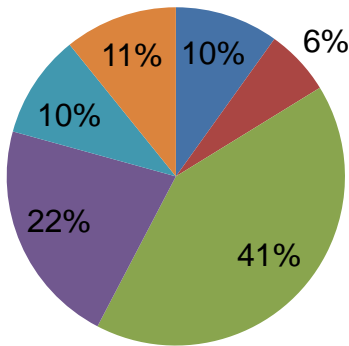
Survey of 82 cities in 45 states

Donald Shoup, "Fixing Broken Sidewalks" Access, Spring 2010

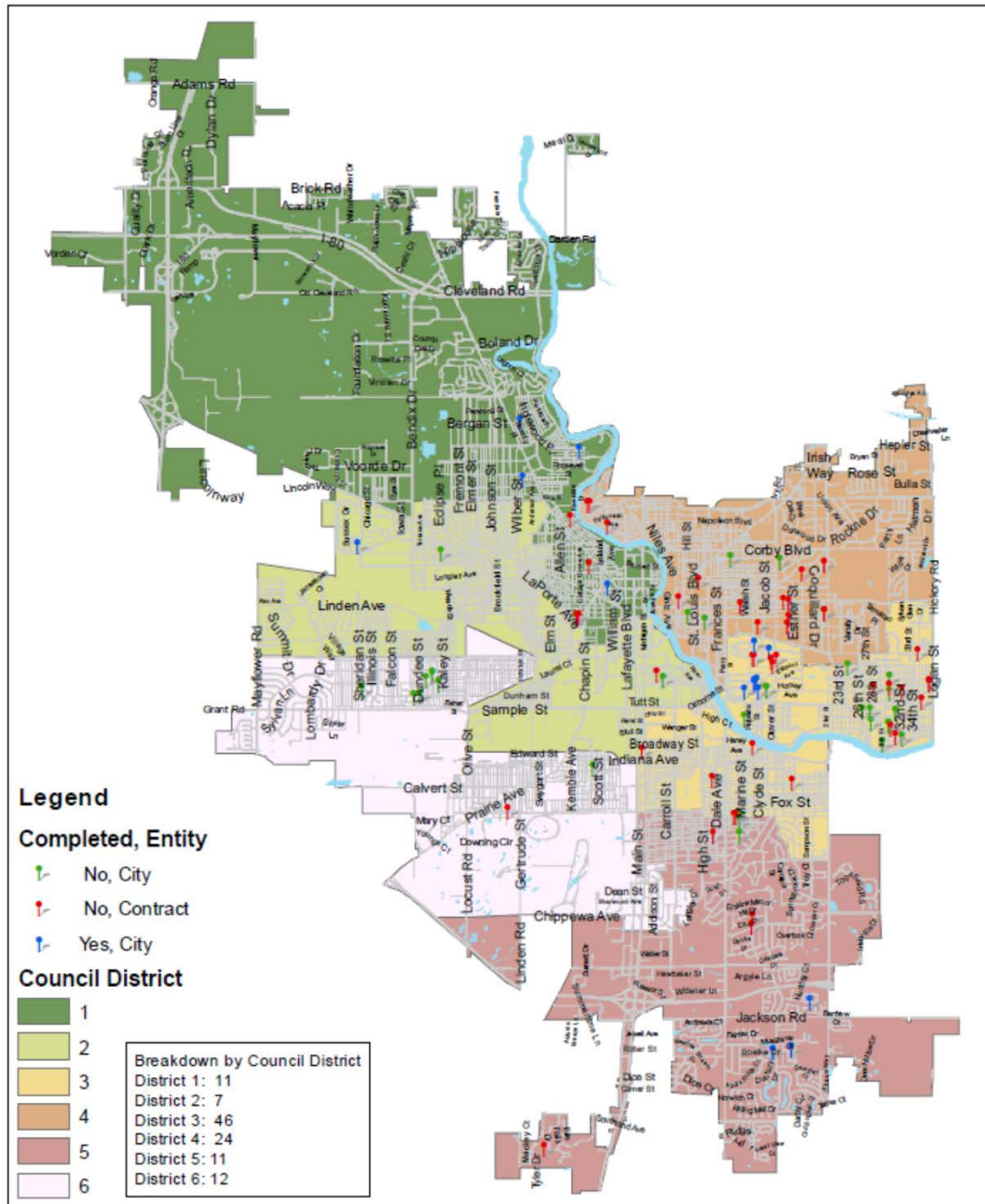
Curb & Sidewalk



Sidewalks by District



- 1
- 2
- 3
- 4
- 5
- 6



Sidewalk Repair Locations for 2014

