

# Unity Gardens, Inc.



**Growing Food, Growing Health,  
Growing Community**



**“We Are Growing More Than Vegetables Here”**



**Growing  
Community**



How it started.....





**"I'm preparing a vegetable garden for the area shelters and need to use. "  
e-mail correspondence 4 27 08**

# An Idea is Sprouted



# Collaborations Grew

**City of South Bend, Lush Cosmetics, County Soil and Water Conservation District, Purdue Extension, Master Gardeners, American Culinary Federation, Community Foundation, Garden Clubs, Libraries, Beacon Health System, St. Joseph Health System, Schools, Colleges, Businesses, Municipalities, St Joseph County, & more**



The vision for the Unity Gardens is to have a community with an abundance of healthy, locally grown produce.



# 2022 Unity Gardens

- **1<sup>st</sup> Source Bank Unity Garden**
- **Beacon Triangle on 31 & Angela**
- **Bendix IN Health Center Unity Garden**
- **Broadway Unity Garden**
- **Chapin Park Unity Garden**
- **Clay Church Unity Garden**
- **Clay Intermediate**
- **Center for Civic Innovation**
- **Cultivate Culinary Unity Garden**
- **Eddy St Eberhart Unity Garden**
- **Graceful Giving Unity Gardens**
- **Harrison Primary Unity Garden**
- **High Street Unity Garden (HUG)**
- **Holy Cross Unity Garden**
- **IU Medical Unity Garden at ND**
- **JJC Unity Garden**
- **Jewish Federation Unity Garden**
- **Keller Park Unity Garden**
- **Lakeville Unity Garden**
- **LaSalle Square Unity Garden**
- **Madison Square Unity Garden**
- **Marshall Primary Unity Garden**
- **McKinley School Unity Garden**
- **Monroe Park Unity Garden**
- **Morningside 1st Presbyterian UG**
- **Mutual Housing Unity Garden**
- **North Liberty Unity Garden**
- **Our Lady of the Road Unity Garden**
- **Prince of Peace Unity Garden**
- **Re-Entry Unity Garden**
- **Safe Station- YSB Unity Garden**
- **St. Joseph Health Center- AAA Plymouth**
- **St Michael's Family Unity Garden**
- **Saint Peter's Church Unity Garden**
- **Safe Station Unity Garden**
- **Umani Unity Garden**
- **Violets Unity Garden**
- **Walkerton Unity Garden**
- **Westville Unity Garden**
- **Zion Church Unity Garden**



**Common Ground: Growing Food Together**





**Inclusive spaces:  
growing through diversity**





## Mission

Unity Gardens promotes wellness through connecting our community to healthy food, nature, and one another.

## ~ We improve community health:

**Physically:** By growing free food gardens that help mitigate food insecurity while encouraging increased consumption of fruits & vegetables.

- **Environmentally:** by increasing green space in urban areas; investing in natural growing techniques, soil health, native plantings and pollination areas.
- **Socially:** by creating a dignified free food model, meaningful service, increased social capital and internships .
- **Economically:** by developing a sustainable local food system, recapturing food waste, creating new jobs, increasing wellness and per-capita productivity.

# Social Sustainability

What is most unique about the Unity Gardens is the approach, based on **sharing**.



<http://www.southbendtribune.com> Tribune Photos/JIM RIDER

**Hand Out: Food for those hungry**

**Hand Up: Opportunity for those oppressed**

# Annual Impact!

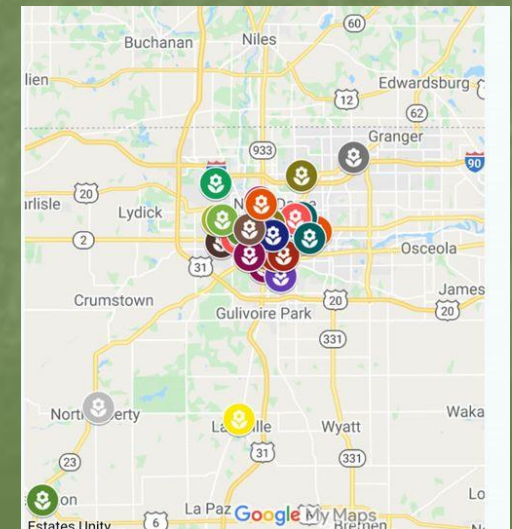


Grew **180,000+ lbs** of produce

Engaged over  
**11,500 people**  
in our programs



Supported **30+**  
**neighborhood**  
**Unity Gardens**



*Each Unity Garden has two criteria: diverse people coming together to grow food and a sharing component.*



# What's Unity's Role ?



- Education
- Garden Planning
- Harnessing donations to support the gardens
- Offering guidance to help with volunteers
- Providing Insurance
- Assisting in garden infrastructure: raised beds , benches , picnic tables, hoses, etc.
- Raising community awareness

# We Learn As We Grow



# Teaching people how to grow harvest and prepare healthy food





# Native Plant Pollination Expansion and Rain Gardens



# Beekeeping





# Urban Chickens



# Summer Internships & Garden Guides



# Investing in Kids!





# Cooking in the Garden; Authentic Farm to Fork



# Hosting Volunteer Groups

It's more than working in the garden



# Solar Power

## How Solar Works



The sun rays are converted by the solar panels to DC power.



DC power feeds into the inverter, which converts it to AC, and sends it to the breaker box.



The energy is then sent to the greenhouse, and is ready to use from there!



Lights, heaters, and fans are powered by solar energy!



# Urban Farm



# Hoop-Houses







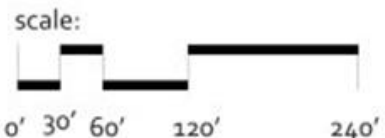
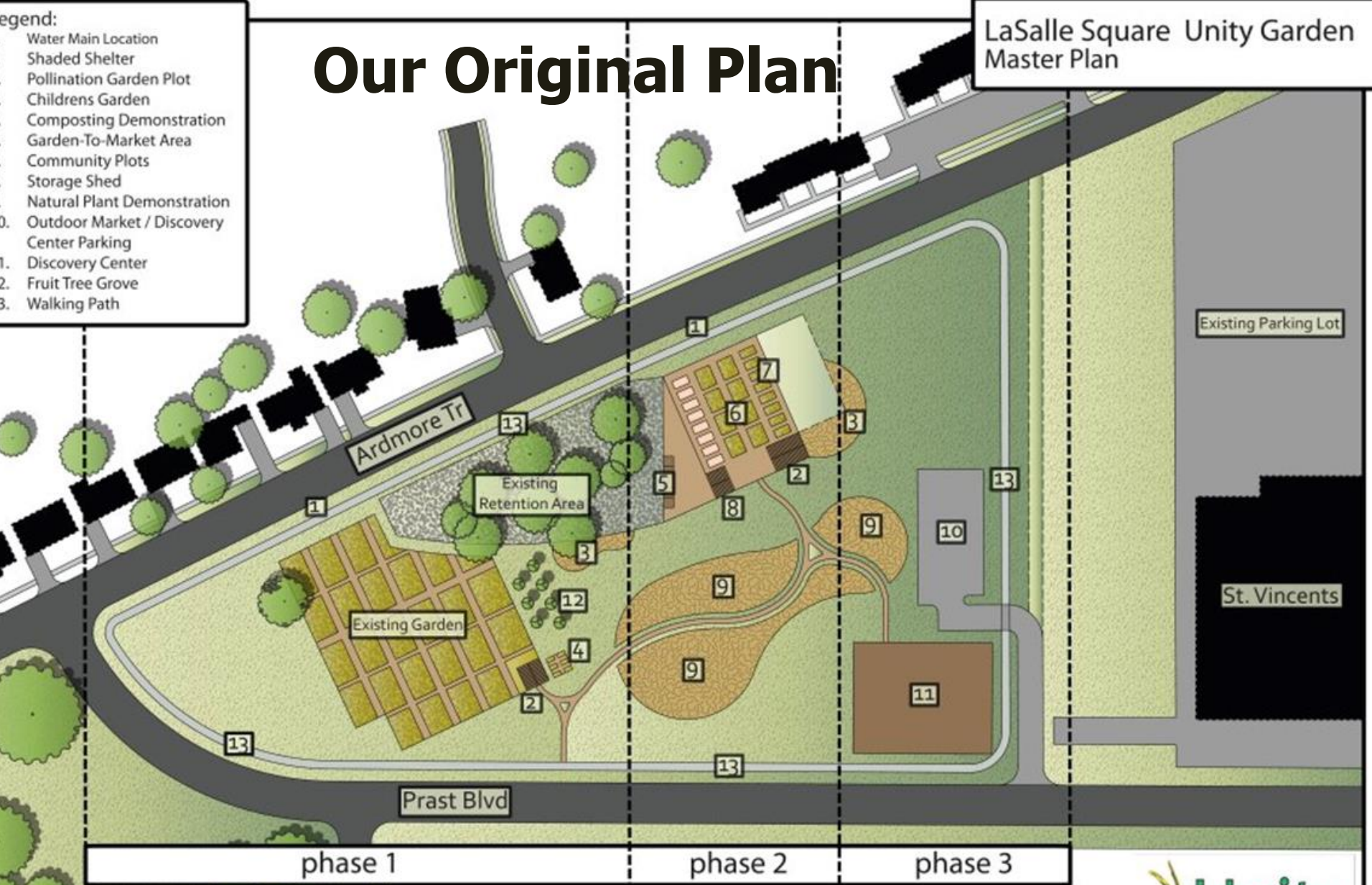
# Unity Gardens Honey From the Hood: Award Winning Blends from across the community!



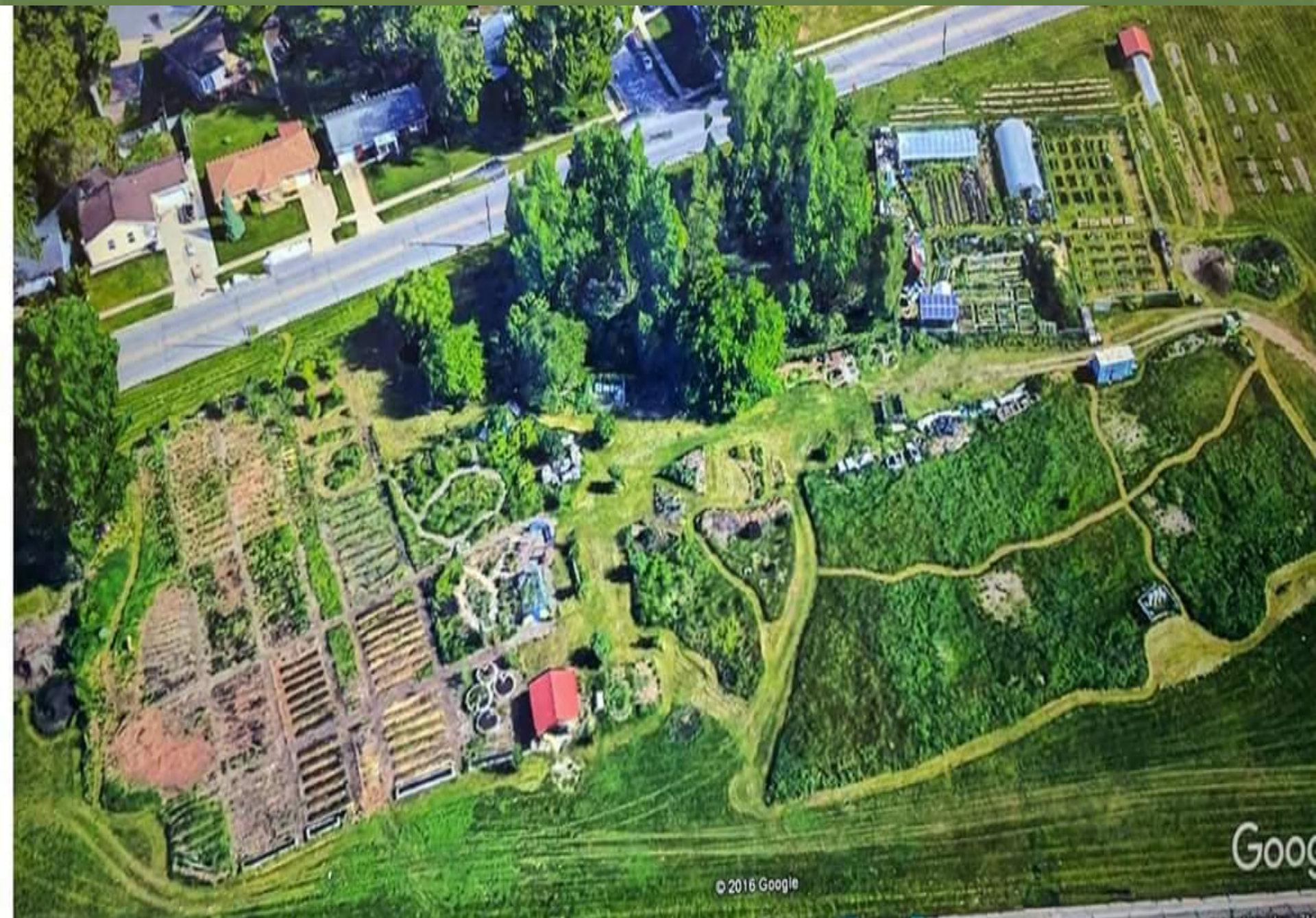
- Legend:
- Water Main Location
  - Shaded Shelter
  - Pollination Garden Plot
  - Childrens Garden
  - Composting Demonstration
  - Garden-To-Market Area
  - Community Plots
  - Storage Shed
  - Natural Plant Demonstration
  - Outdoor Market / Discovery Center Parking
  - Center Parking
  - 1. Discovery Center
  - 2. Fruit Tree Grove
  - 3. Walking Path

# Our Original Plan

LaSalle Square Unity Garden Master Plan



Growing Food, Growing Health, Growing Community



# Unity Gardens



Community Learning Center



# Unity Gardens



# Team Unity!!











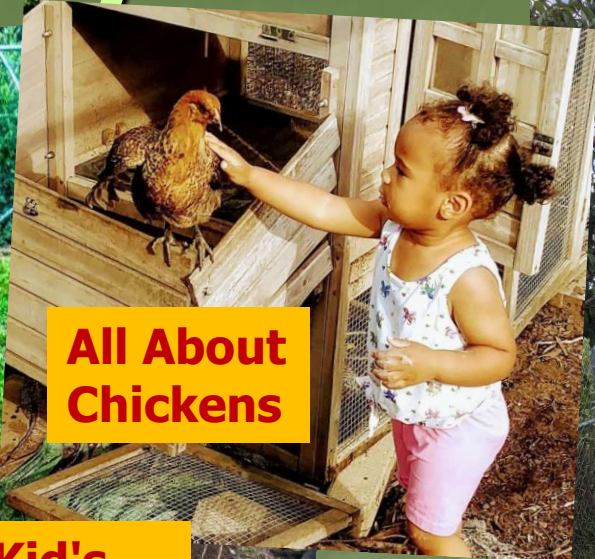
# Edgy Veggie Mobile Classroom



# Activity Stations



**All About Chickens**



**Kid's Discovery**



**Chef**



**Pollination Station**



**Planting and Seeding**

**Harvest Map**



**Throw Zone**



**Tasting Station**



**Composting**



# Informational Kiosk Supply Shed Garden Guides Bilingual Signage



# Looking toward our Future



# Accessibility Garden Project



# Fully Inclusive to Everyone







# Growing Spaces Geodome Learning Lab





Why ?





# Together We Can Grow

You can help us grow:

- \*To connect our community to nature and each other
- \*Creating the 1<sup>st</sup> dignified free food model for wellness
- \*To build a model food hub attraction
- \*Provide a better future for our children



# How can you support Unity Gardens

**Volunteer** for unity

**Spread** the word

**Join** our Facebook page

**Follow** [theunitygardens.org](http://theunitygardens.org)

**Visit** the gardens, and bring a friend

## **Donate to Unity**

Sara Stewart RN MSN 574-315-4361;

PO Box 10022 South Bend, IN 46680

[growunitygardens@yahoo.com](mailto:growunitygardens@yahoo.com)



**We have Insta and Tic Toc too!!**

Goog