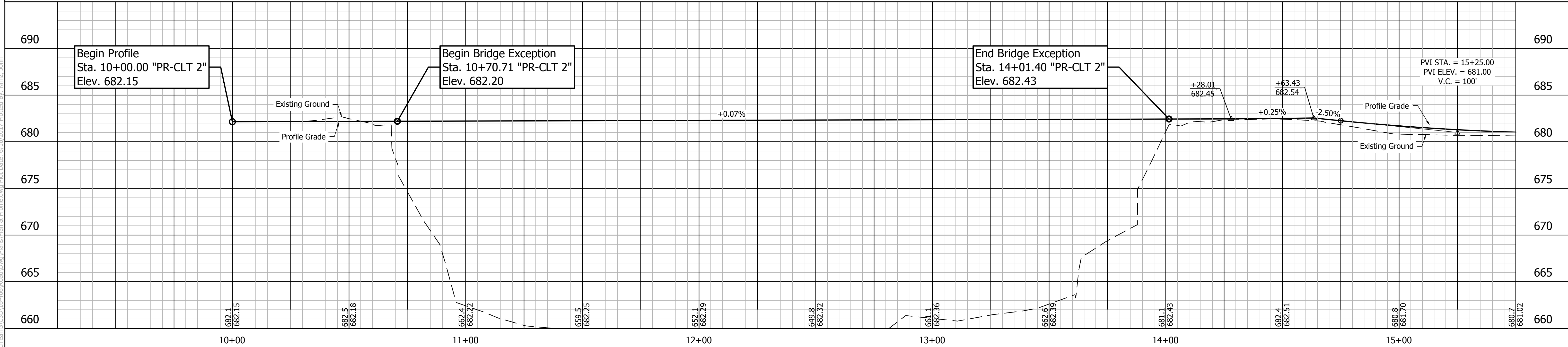


PAVEMENT MARKING LEGEND

- 30 Line, Thermoplastic, Solid, White, 4"
- 31 Line, Thermoplastic, Broken, White, 4"
- 32 Line, Thermoplastic, Solid, Yellow, 4"
- 33 Transverse Marking, Thermoplastic, Crosswalk Line, White, 6"
- 34 Transverse Marking, Thermoplastic, Crosswalk Line, White, 24"
- 35 Transverse Marking, Thermoplastic, Stop Line, White, 24"
- 36 Pavement Message Marking, Thermoplastic, Word (ONLY)
- 37 Pavement Message Marking, Thermoplastic, Lane Indication Arrow

CONSTRUCTION DETAILS LEGEND

- A Sidewalk, Decorative (See Architectural Details)
- C PCCP, 10"
- D HMA For Drives
- F Concrete Sidewalk, 5"
- G Detectable Warning Elements
- M Milling & HMA Resurface
- K Full Depth HMA Pavement
- L Multi-Use Path
- N Nursery Sodding
- O Curb & Gutter, Concrete
- P Curb, Barrier
- Q Seeding
- R Handrail



1625 N. Post Road
Indianapolis, IN 46219
Phone 317-895-2585
Fax 317-895-2596
www.ucindy.com

RECOMMENDED FOR APPROVAL		DESIGN ENGINEER		DATE	
DESIGNED: AJA	DRAWN: JN2				
CHECKED: WRC	CHECKED: WRC				

INDIANA
DEPARTMENT OF TRANSPORTATION

**PLAN & PROFILE
LINE "PR-CLT 2"**

HORIZONTAL SCALE 1" = 20'	BRIDGE FILE -
VERTICAL SCALE 1" = 5'	DESIGNATION 1401810 / 1401811
SURVEY BOOK -	SHEETS 22 of 78
CONTRACT -	PROJECT -

File Name: \\UCS\SHS\Road\Road\Road\CD\15-405\Road\Down\Plans\Plan & Profile.dwg Plot Date: 6/16/2017 Plotted By: Nimz, John