

Filed in Clerk's Office

APR 23 2019

KARIEEMAH FOWLER  
CITY CLERK, SOUTH BEND, IN

# Climate Change & You

...

How the planet is getting hotter and how YOU can stop it

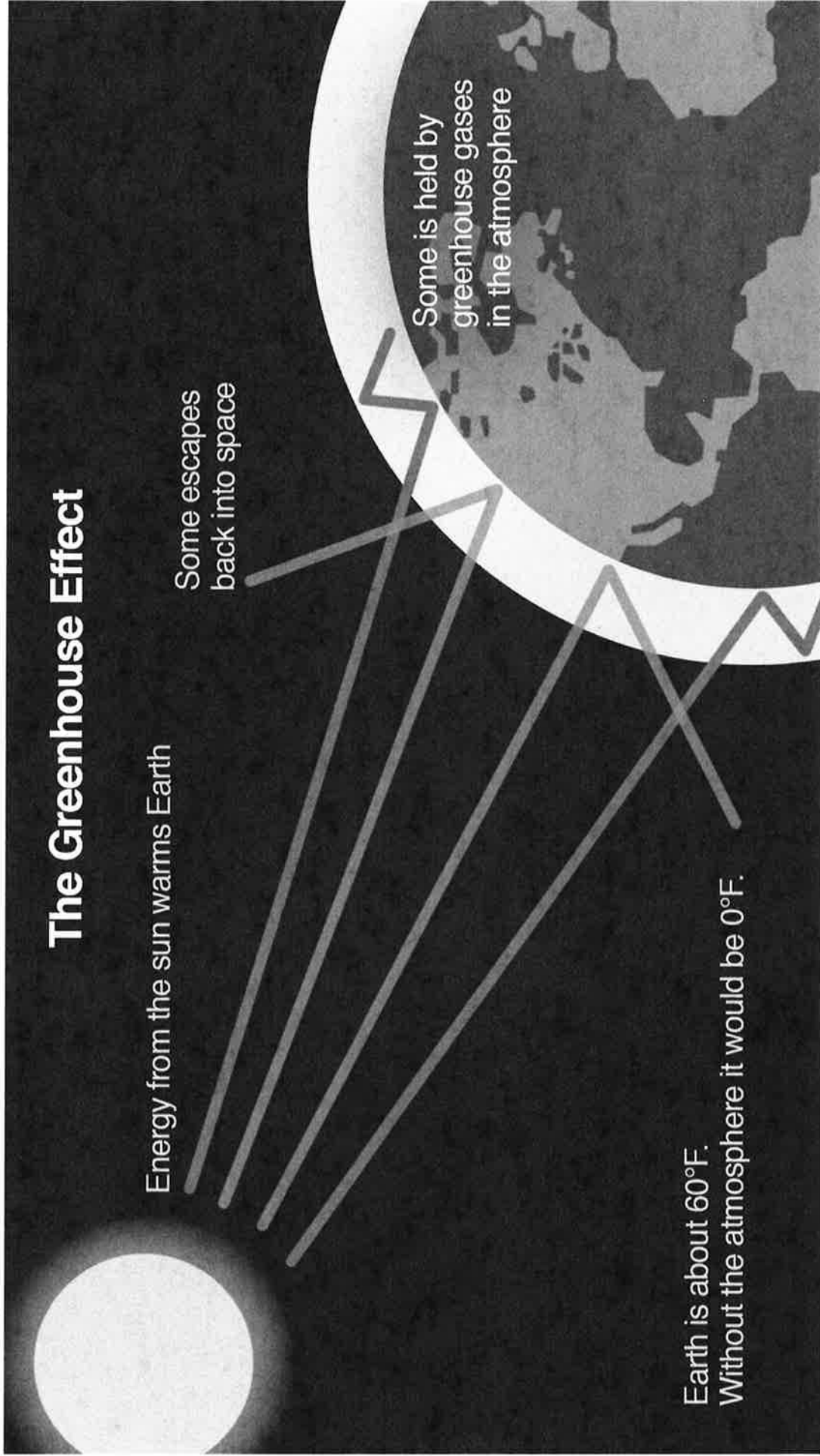
# The Greenhouse Effect

Energy from the sun warms Earth

Some escapes back into space

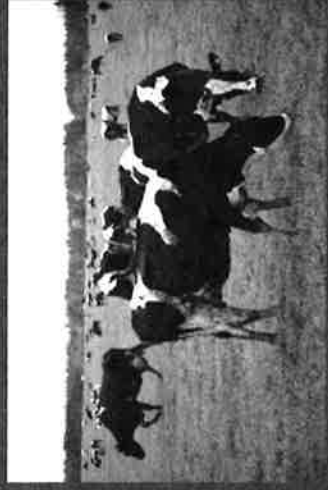
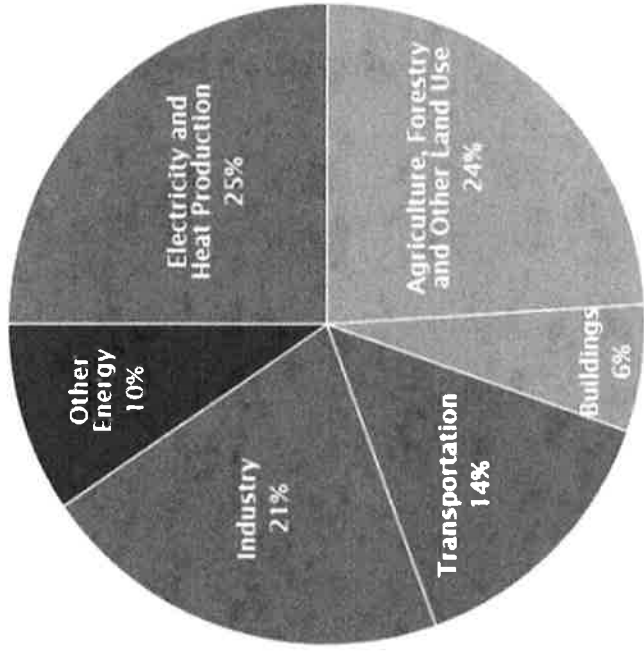
Some is held by greenhouse gases in the atmosphere

Earth is about 60°F.  
Without the atmosphere it would be 0°F.



# Where do greenhouse gases come from?

Global Greenhouse Gas Emissions  
by Economic Sector



**How does climate  
change affect ME?**

# Flooding

A warmer planet leads to stronger storms and more rainfall



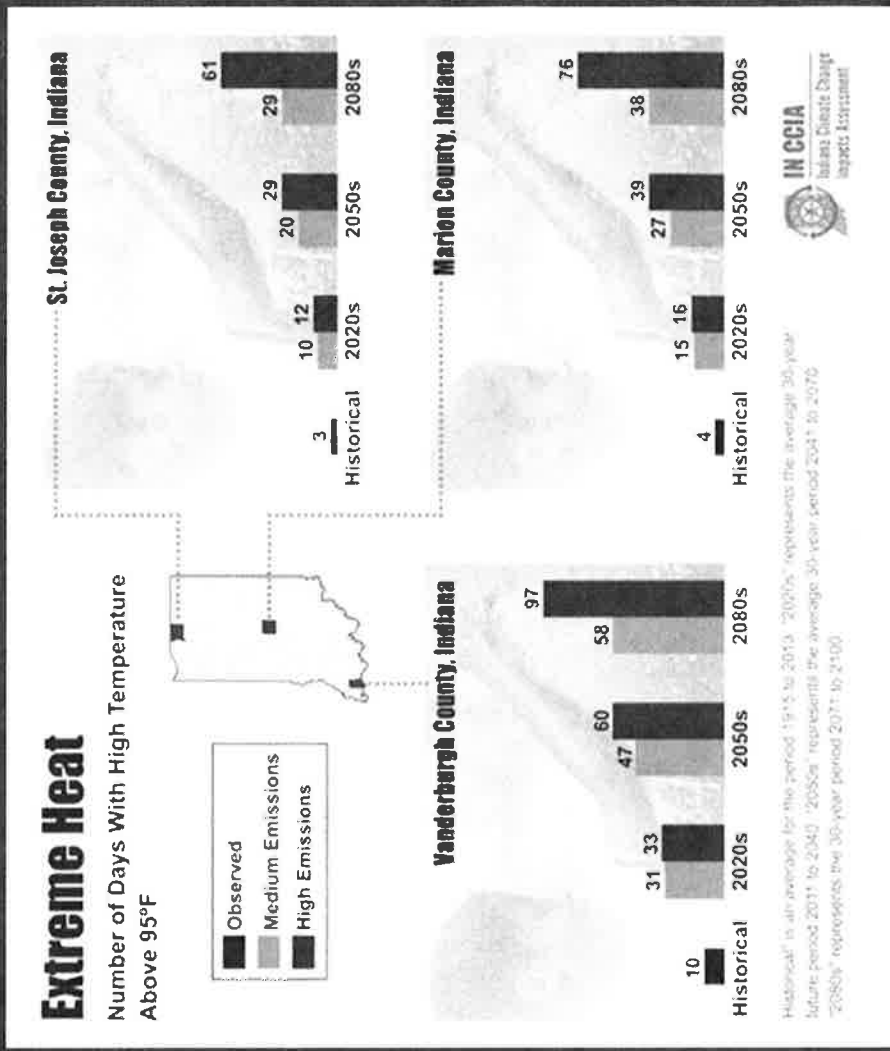
- 1,000 year flood in 2016
- 500 year flood in 2018

# Extreme Heat

Could lead to as many as  
**61 days** with  
temperatures above 95°F

.....

That's every single day in  
June and July!



## Spread of Disease and Pests



As areas like South Bend get hotter, warm-weather insects can spread disease and kill local plants and animals

## And if that wasn't enough....

Pope Francis has written *Laudato Si'*, which calls on everyone to care for our common home, Earth.

*"All of us can cooperate as instruments of God for the care of creation, each according to his or her own culture, experience, involvements and talents."*





# Climate change hurts the downtrodden the most

Poor are the most affected



- live in vulnerable areas
- dependent on local environment
- few resources for adaptation
- rampant migration but not recognized as refugees

## How YOU can help!

Bike to school!

Studies predict that if only 14% of travel in cities is by bike, we can reduce CO2 from transportation by **11%**

And we're already at 6%!



Other ways you can help...

