



**Period Ending: December 31, 2018**

**Issued By: Controller**

# **City of South Bend**

## **Century Center Bank Account Cash Summary**

### **Page Numbers**

### **Contents**

2 - 9	<i>Cash Summary Detail</i>
10	<i>Cash Trends Chart - September 30, 2006 to December 31, 2018</i>
11	<i>Cash Summary - 12 Year Comparison</i>

### **Distribution**

*South Bend Civic Center Board of Managers  
Century Center Management  
Mayor  
Chief of Staff  
Deputy Chief of Staff  
City Controller  
Deputy City Controller  
Director of Treasury*

*Pete Buttigieg  
Laura O'Sullivan  
Suzanna Fritzberg  
Daniel Parker  
Benjamin Dougherty  
Rahman Johnson*

**Century Center Bank Statement Cash Summary**  
**September 30, 2006 through December 31, 2018**  
**Updated - January 2, 2019**

Month	Key Bank Capital & Investment Account	Key Bank Operating (1) Account	Key Bank A/P - Payroll Account	Key Bank Event Account	Key Bank Energy Bond (4) Account	Certificate of Deposit Capital	Old National Loan	Net	Notes
<b>Ending Balance - September 30, 2006</b>	\$ 165,398.35	\$ 276,400.17	\$ 61,104.48	\$ 14,869.85	\$ -	\$ 1,036,692.21	\$ (460,500.00)	\$ 1,093,965.06	Key Bank CD \$1,036,692.21
Receipts	60.28	171,258.11	300,000.00	6,140.00	-	-	-	477,458.39	
Disbursements	-	(300,316.85)	(254,091.79)	(17,003.50)	-	-	-	(571,412.14)	
<b>Ending Balance - October 31, 2006</b>	<b>165,458.63</b>	<b>147,341.43</b>	<b>107,012.69</b>	<b>4,006.35</b>	<b>-</b>	<b>1,036,692.21</b>	<b>(460,500.00)</b>	<b>1,000,011.31</b>	
Receipts	54.40	180,752.84	250,000.00	3,840.00	-	-	-	434,647.24	
Disbursements	-	(251,436.91)	(201,234.53)	(6.28)	-	-	17,875.00	(434,802.72)	
<b>Ending Balance - November 30, 2006</b>	<b>165,513.03</b>	<b>76,657.36</b>	<b>155,778.16</b>	<b>7,840.07</b>	<b>-</b>	<b>1,036,692.21</b>	<b>(442,625.00)</b>	<b>999,855.83</b>	
Receipts	100,079.26	245,169.61	250,000.00	17,280.00	-	-	-	612,528.87	\$100,000 PSDA Fund 377 2006
Disbursements	-	(300,126.17)	(379,053.86)	(20,009.19)	-	-	-	(699,189.22)	
<b>Ending Balance - December 31, 2006</b>	<b>265,592.29</b>	<b>21,700.80</b>	<b>26,724.30</b>	<b>5,110.88</b>	<b>-</b>	<b>1,036,692.21</b>	<b>(442,625.00)</b>	<b>913,195.48</b>	
Receipts	90.24	833,624.36	200,000.00	5,260.00	-	-	-	1,038,974.60	
Disbursements	-	(100,083.35)	(165,721.66)	(3.44)	-	-	-	(265,808.45)	
<b>Ending Balance - January 31, 2007</b>	<b>265,682.53</b>	<b>755,241.81</b>	<b>61,002.64</b>	<b>10,367.44</b>	<b>-</b>	<b>1,036,692.21</b>	<b>(442,625.00)</b>	<b>1,686,361.63</b>	
Receipts	81.54	203,966.17	250,000.00	14,960.00	-	-	-	469,007.71	
Disbursements	-	(201,074.63)	(206,130.22)	(14,004.29)	-	-	17,875.00	(403,334.14)	
<b>Ending Balance - February 28, 2007</b>	<b>265,764.07</b>	<b>758,133.35</b>	<b>104,872.42</b>	<b>11,323.15</b>	<b>-</b>	<b>1,036,692.21</b>	<b>(424,750.00)</b>	<b>1,752,035.20</b>	
Receipts	90.30	106,391.23	225,000.00	7,640.00	-	-	-	339,121.53	
Disbursements	-	(297,852.43)	(222,892.18)	-	-	-	-	(520,744.61)	
<b>Ending Balance - March 31, 2007</b>	<b>265,854.37</b>	<b>566,672.15</b>	<b>106,980.24</b>	<b>18,963.15</b>	<b>-</b>	<b>1,036,692.21</b>	<b>(424,750.00)</b>	<b>1,570,412.12</b>	
Receipts	87.42	154,893.81	325,343.53	-	-	-	-	480,324.76	
Disbursements	-	(375,681.54)	(319,596.54)	-	-	-	-	(695,278.08)	
<b>Ending Balance - April 30, 2007</b>	<b>265,941.79</b>	<b>345,884.42</b>	<b>112,727.23</b>	<b>18,963.15</b>	<b>-</b>	<b>1,036,692.21</b>	<b>(424,750.00)</b>	<b>1,355,458.80</b>	
Receipts	302,012.32	157,100.11	175,000.00	-	-	-	-	634,112.43	\$300,000 Center Plate
Disbursements	-	(300,301.48)	(251,397.99)	-	-	-	17,875.00	(533,824.47)	
<b>Ending Balance - May 31, 2007</b>	<b>567,954.11</b>	<b>202,683.05</b>	<b>36,329.24</b>	<b>18,963.15</b>	<b>-</b>	<b>1,036,692.21</b>	<b>(406,875.00)</b>	<b>1,455,746.76</b>	
Receipts	2,052.88	258,319.99	235,000.00	-	-	-	-	495,372.87	
Disbursements	-	(175,451.80)	(222,927.07)	-	-	-	-	(398,378.87)	
<b>Ending Balance - June 30, 2007</b>	<b>570,006.99</b>	<b>285,551.24</b>	<b>48,402.17</b>	<b>18,963.15</b>	<b>-</b>	<b>1,036,692.21</b>	<b>(406,875.00)</b>	<b>1,552,740.76</b>	
Receipts	2,129.11	894,611.53	250,512.40	-	-	-	-	1,147,253.04	
Disbursements	-	(360,506.98)	(263,607.64)	-	-	-	17,875.00	(606,239.62)	
<b>Ending Balance - July 31, 2007</b>	<b>572,136.10</b>	<b>819,655.79</b>	<b>35,306.93</b>	<b>18,963.15</b>	<b>-</b>	<b>1,036,692.21</b>	<b>(389,000.00)</b>	<b>2,093,754.18</b>	
Receipts	2,137.06	127,461.17	326,366.73	-	-	-	-	455,964.96	
Disbursements	-	(326,326.45)	(277,937.15)	-	-	-	-	(604,263.60)	
<b>Ending Balance - August 31, 2007</b>	<b>574,273.16</b>	<b>620,790.51</b>	<b>83,736.51</b>	<b>18,963.15</b>	<b>-</b>	<b>1,036,692.21</b>	<b>(389,000.00)</b>	<b>1,945,455.54</b>	
Receipts	2,006.36	242,924.75	262,000.00	-	-	-	-	506,931.11	
Disbursements	-	(262,541.70)	(282,765.77)	(4.78)	-	-	-	(545,312.25)	
<b>Ending Balance - September 30, 2007</b>	<b>576,279.52</b>	<b>601,173.56</b>	<b>62,970.74</b>	<b>18,958.37</b>	<b>-</b>	<b>1,036,692.21</b>	<b>(389,000.00)</b>	<b>1,907,074.40</b>	
Receipts	102,183.73	123,262.63	270,318.50	35,112.90	-	11,674.13	-	542,551.89	\$100,000 PSDA Fund 377 2007
Investment Transfers	-	-	1,044,101.45	-	-	-	-	1,044,101.45	Key Bank CD \$1,044,101.45
Investment Transfers	1,048,366.34	(270,265.24)	(1,044,101.45)	-	-	(1,048,366.34)	-	(1,314,366.69)	
Disbursements	-	-	(292,668.17)	(40.49)	-	-	-	(292,708.66)	
<b>Ending Balance - October 31, 2007</b>	<b>1,726,829.59</b>	<b>454,170.95</b>	<b>40,621.07</b>	<b>54,030.78</b>	<b>-</b>	<b>-</b>	<b>(389,000.00)</b>	<b>1,886,652.39</b>	
Receipts	2,939.77	167,386.49	261,000.00	23,417.40	-	-	-	454,743.66	
Investment Transfers	(1,100,000.00)	(261,578.41)	-	-	-	1,100,000.00	-	(261,578.41)	Horizon CD \$1,100,000.00
Disbursements	-	-	(234,437.82)	-	-	-	17,875.00	(216,562.82)	
<b>Ending Balance - November 30, 2007</b>	<b>629,769.36</b>	<b>359,979.03</b>	<b>67,183.25</b>	<b>77,448.18</b>	<b>-</b>	<b>1,100,000.00</b>	<b>(371,125.00)</b>	<b>1,863,254.82</b>	
Receipts	12,080.28	184,489.44	205,000.00	11,525.30	-	-	-	413,095.02	
Disbursements	(664.37)	(205,461.54)	(237,033.27)	-	-	-	-	(443,159.18)	
<b>Ending Balance - December 31, 2007</b>	<b>641,185.27</b>	<b>339,006.93</b>	<b>35,149.98</b>	<b>88,973.48</b>	<b>-</b>	<b>1,100,000.00</b>	<b>(371,125.00)</b>	<b>1,833,190.66</b>	
Receipts	2,166.80	900,191.68	443,740.82	20,197.50	-	-	-	1,366,296.80	Hotel/Motel Tax - \$748,695
Disbursements	(41,347.52)	(403,043.27)	(424,469.01)	-	-	-	17,875.00	(850,984.80)	\$40,740.82 capital transfer
<b>Ending Balance - January 31, 2008</b>	<b>602,004.55</b>	<b>836,155.34</b>	<b>54,421.79</b>	<b>109,170.98</b>	<b>-</b>	<b>1,100,000.00</b>	<b>(353,250.00)</b>	<b>2,348,502.66</b>	1st Source CD - \$1,100,000 - 2/6/08 - 3.00%
Receipts	14,530.36	52,843.23	265,000.00	40,438.15	-	-	-	372,811.74	
Disbursements	(447.00)	(265,466.76)	(205,035.48)	-	-	-	-	(470,949.24)	
<b>Ending Balance - February 29, 2008</b>	<b>616,087.91</b>	<b>623,531.81</b>	<b>114,386.31</b>	<b>149,609.13</b>	<b>-</b>	<b>1,100,000.00</b>	<b>(353,250.00)</b>	<b>2,250,365.16</b>	
Receipts	13,573.68	94,605.35	238,000.00	11,246.70	-	-	-	357,425.73	Capital - IRS Refund \$12,489.00
Transfers (2)	(210,000.00)	(10,000.00)	220,000.00	-	-	-	-	-	Transfers - reversed in April, 2008
Disbursements	-	(18,380.17)	(315,114.71)	-	-	-	-	(333,494.88)	
<b>Ending Balance - March 31, 2008</b>	<b>419,661.59</b>	<b>689,756.99</b>	<b>257,271.60</b>	<b>160,855.83</b>	<b>-</b>	<b>1,100,000.00</b>	<b>(353,250.00)</b>	<b>2,274,296.01</b>	

**Century Center Bank Statement Cash Summary**  
**September 30, 2006 through December 31, 2018**  
**Updated - January 2, 2019**

Month	Key Bank Capital & Investment Account	Key Bank Operating (1) Account	Key Bank A/P - Payroll Account	Key Bank Event Account	Key Bank Energy Bond (4) Account	Certificate of Deposit Capital	Old National Loan	Net	Notes
Receipts	8,497.67	165,321.94	311,356.47	27,327.20	-	-	-	512,503.28	
Transfers - Correction (2)	210,000.00	10,000.00	(220,000.00)	-	-	-	-	-	Correction of March transfer
Disbursements	(28,011.54)	(486,818.77)	(309,048.09)	(6,714.63)	-	-	17,875.00	(812,718.03)	\$28,011.54 capital expenditures approved
<b>Ending Balance - April 30, 2008</b>	<b>610,147.72</b>	<b>378,260.16</b>	<b>39,579.98</b>	<b>181,468.40</b>	-	<b>1,100,000.00</b>	<b>(335,375.00)</b>	<b>1,974,081.26</b>	
Receipts	1,024.08	120,875.07	212,000.00	23,508.45	-	-	-	357,407.60	
Disbursements	-	(213,314.67)	(223,602.47)	(24,349.20)	-	-	-	(461,266.34)	
<b>Ending Balance - May 31, 2008</b>	<b>611,171.80</b>	<b>285,820.56</b>	<b>27,977.51</b>	<b>180,627.65</b>	-	<b>1,100,000.00</b>	<b>(335,375.00)</b>	<b>1,870,222.52</b>	
Receipts	1,770.34	215,496.95	311,617.65	15,706.20	-	-	-	544,591.14	
Disbursements	(68,617.65)	(244,802.41)	(329,142.18)	(53,623.35)	-	-	-	(696,185.59)	\$68,617.65 capital expenditures approved
<b>Ending Balance - June 30, 2008</b>	<b>544,324.49</b>	<b>256,515.10</b>	<b>10,452.98</b>	<b>142,710.50</b>	-	<b>1,100,000.00</b>	<b>(335,375.00)</b>	<b>1,718,628.07</b>	
Receipts	2,144.71	868,146.31	400,000.00	29,762.40	-	-	-	1,300,053.42	Hotel/Motel Tax - \$748,695
Disbursements	-	(400,241.67)	(366,533.00)	(17,118.70)	-	-	17,875.00	(766,018.37)	
<b>Ending Balance - July 31, 2008</b>	<b>546,469.20</b>	<b>724,419.74</b>	<b>43,919.98</b>	<b>155,354.20</b>	-	<b>1,100,000.00</b>	<b>(317,500.00)</b>	<b>2,252,663.12</b>	
Receipts	3,472.76	125,562.52	185,000.00	8,968.70	-	-	-	323,003.98	
Disbursements	-	(185,491.70)	(214,917.14)	(30,146.15)	-	-	-	(430,554.99)	
<b>Ending Balance - August 31, 2008</b>	<b>549,941.96</b>	<b>664,490.56</b>	<b>14,002.84</b>	<b>134,176.75</b>	-	<b>1,100,000.00</b>	<b>(317,500.00)</b>	<b>2,145,112.11</b>	
Receipts	834.66	148,171.26	362,535.70	45,602.00	-	-	-	557,143.62	
Disbursements	(53,535.78)	(309,261.13)	(349,229.46)	(460.00)	-	-	-	(712,486.37)	\$53,535.78 capital expenditures approved
<b>Ending Balance - September 30, 2008</b>	<b>497,240.84</b>	<b>503,400.69</b>	<b>27,309.08</b>	<b>179,318.75</b>	-	<b>1,100,000.00</b>	<b>(317,500.00)</b>	<b>1,989,769.36</b>	
Receipts	2,927.32	236,872.73	288,000.08	30,218.90	-	-	-	558,019.03	
Disbursements	-	(289,939.90)	(282,452.66)	(91,368.80)	-	-	17,875.00	(645,886.36)	
<b>Ending Balance - October 31, 2008</b>	<b>500,168.16</b>	<b>450,333.52</b>	<b>32,856.50</b>	<b>118,168.85</b>	-	<b>1,100,000.00</b>	<b>(299,625.00)</b>	<b>1,901,902.03</b>	
Receipts	100,528.17	206,151.16	304,100.55	26,576.25	-	-	-	637,356.13	2008 PSDA - \$100,000 to Capital Account
Disbursements	(78,100.55)	(227,829.62)	(324,888.93)	(5,691.90)	-	-	-	(636,511.00)	
<b>Ending Balance - November 30, 2008</b>	<b>522,595.78</b>	<b>428,655.06</b>	<b>12,068.12</b>	<b>139,053.20</b>	-	<b>1,100,000.00</b>	<b>(299,625.00)</b>	<b>1,902,747.16</b>	
Receipts	7,316.14	181,691.28	302,000.00	34,830.20	-	-	-	525,837.62	
Disbursements	-	(303,937.55)	(270,853.18)	(18,162.25)	-	-	-	(592,952.98)	
<b>Ending Balance - December 31, 2008</b>	<b>529,911.92</b>	<b>306,408.79</b>	<b>43,214.94</b>	<b>155,721.15</b>	-	<b>1,100,000.00</b>	<b>(299,625.00)</b>	<b>1,835,631.80</b>	
Receipts	5,070.16	799,829.07	214,000.00	38,901.25	-	-	17,875.00	1,075,675.48	\$672,825.50 Hotel/Motel Tax Receipt
Disbursements	-	(219,083.50)	(242,544.92)	(12,573.10)	-	-	-	(474,201.52)	
<b>Ending Balance - January 31, 2009</b>	<b>534,982.08</b>	<b>887,154.36</b>	<b>14,670.02</b>	<b>182,049.30</b>	-	<b>1,100,000.00</b>	<b>(281,750.00)</b>	<b>2,437,105.76</b>	
Receipts	200.98	89,255.74	261,171.50	28,603.45	-	-	-	379,231.67	
Disbursements	(19,171.50)	(242,650.16)	(206,458.94)	(38,158.30)	-	-	-	(506,438.90)	\$19,171.50 capital expenditures approved
<b>Ending Balance - February 28, 2009</b>	<b>516,011.56</b>	<b>733,759.94</b>	<b>69,382.58</b>	<b>172,494.45</b>	-	<b>1,100,000.00</b>	<b>(281,750.00)</b>	<b>2,309,898.53</b>	
Receipts	146.15	110,657.99	219,150.00	47,424.19	-	-	-	377,378.33	
Disbursements	-	(220,996.87)	(273,203.76)	(31,295.39)	-	-	-	(525,496.02)	
<b>Ending Balance - March 31, 2009</b>	<b>516,157.71</b>	<b>623,421.06</b>	<b>15,328.82</b>	<b>188,623.25</b>	-	<b>1,100,000.00</b>	<b>(281,750.00)</b>	<b>2,161,780.84</b>	
Receipts	1,160.14	181,943.23	232,000.00	33,953.99	-	-	-	449,057.36	
Disbursements	-	(232,797.68)	(232,637.50)	(76,484.45)	-	-	17,875.00	(524,044.63)	
<b>Ending Balance - April 30, 2009</b>	<b>517,317.85</b>	<b>572,566.61</b>	<b>14,691.32</b>	<b>146,092.79</b>	-	<b>1,100,000.00</b>	<b>(263,875.00)</b>	<b>2,086,793.57</b>	
Receipts	4,470.41	120,500.63	214,000.00	32,573.95	-	-	-	371,544.99	
Disbursements	-	(214,534.50)	(200,700.91)	(51,069.29)	-	-	-	(466,304.70)	
<b>Ending Balance - May 31, 2009</b>	<b>521,788.26</b>	<b>478,532.74</b>	<b>27,990.41</b>	<b>127,597.45</b>	-	<b>1,100,000.00</b>	<b>(263,875.00)</b>	<b>1,992,033.86</b>	
Receipts	107.23	838,011.57	198,000.00	11,305.35	-	-	-	1,047,424.15	\$672,825.50 Hotel/Motel Tax Receipt
Disbursements	-	(198,094.97)	(205,067.55)	(48,984.70)	-	-	-	(452,147.22)	
<b>Ending Balance - June 30, 2009</b>	<b>521,895.49</b>	<b>1,118,449.34</b>	<b>20,922.86</b>	<b>89,918.10</b>	-	<b>1,100,000.00</b>	<b>(263,875.00)</b>	<b>2,587,310.79</b>	
Receipts	818.49	107,274.56	266,000.00	12,923.50	-	-	-	387,016.55	
Disbursements	(15.00)	(266,401.35)	(269,480.09)	(14,642.10)	-	-	17,875.00	(532,663.54)	
<b>Ending Balance - July 31, 2009</b>	<b>522,698.98</b>	<b>959,322.55</b>	<b>17,442.77</b>	<b>88,199.50</b>	-	<b>1,100,000.00</b>	<b>(246,000.00)</b>	<b>2,441,663.80</b>	
Receipts	100,336.88	163,609.70	206,000.00	5,405.60	-	-	-	475,352.18	2009 PSDA - \$100,000 to Capital Account
Disbursements	-	(306,188.77)	(173,884.21)	(5,603.50)	-	-	-	(485,676.48)	
<b>Ending Balance - August 31, 2009</b>	<b>623,035.86</b>	<b>816,743.48</b>	<b>49,558.56</b>	<b>88,001.60</b>	-	<b>1,100,000.00</b>	<b>(246,000.00)</b>	<b>2,431,339.50</b>	
Receipts	128.03	95,099.71	215,000.00	16,372.78	-	-	-	326,600.52	
Disbursements	-	(215,715.07)	(228,978.30)	(24,674.50)	-	-	-	(469,367.87)	
<b>Ending Balance - September 30, 2009</b>	<b>623,163.89</b>	<b>696,128.12</b>	<b>35,580.26</b>	<b>79,699.88</b>	-	<b>1,100,000.00</b>	<b>(246,000.00)</b>	<b>2,288,572.15</b>	
Receipts	57,523.63	107,260.11	299,000.00	20,296.50	-	-	-	484,080.24	Capital Account - \$53,875 CD's redeemed and
Disbursements	(53,976.75)	(299,998.96)	(316,787.74)	-	-	-	17,875.00	(652,888.45)	reinvested
<b>Ending Balance - October 31, 2009</b>	<b>626,710.77</b>	<b>503,389.27</b>	<b>17,792.52</b>	<b>99,996.38</b>	-	<b>1,100,000.00</b>	<b>(228,125.00)</b>	<b>2,119,763.94</b>	

**Century Center Bank Statement Cash Summary**  
**September 30, 2006 through December 31, 2018**  
**Updated - January 2, 2019**

Month	Key Bank Capital & Investment Account	Key Bank Operating (1) Account	Key Bank A/P - Payroll Account	Key Bank Event Account	Key Bank Energy Bond (4) Account	Certificate of Deposit Capital	Old National Loan	Net	Notes
Receipts	303,664.11	141,350.41	212,000.00	24,936.76	-	-	-	681,951.28	
Disbursements	(300,000.00)	(212,577.28)	(189,068.36)	-	-	-	-	(701,645.64)	\$300,000 capital CD redeemed & reinvested
<b>Ending Balance - November 30, 2009</b>	<b>630,374.88</b>	<b>432,162.40</b>	<b>40,724.16</b>	<b>124,933.14</b>	-	<b>1,100,000.00</b>	<b>(228,125.00)</b>	<b>2,100,069.58</b>	
Receipts	24.66	183,157.13	267,449.14	8,272.60	-	-	-	458,903.53	
Investment Transfers	(200,000.00)	-	-	-	-	200,000.00	-	-	\$200,000 transferred to 1st Source CD
Disbursements	(32,481.04)	(235,780.68)	(284,351.55)	(24,495.19)	-	-	-	(577,108.46)	
<b>Ending Balance - December 31, 2009</b>	<b>397,918.50</b>	<b>379,538.85</b>	<b>23,821.75</b>	<b>108,710.55</b>	-	<b>1,300,000.00</b>	<b>(228,125.00)</b>	<b>1,981,864.65</b>	
Receipts	2,784.66	764,226.99	250,268.80	39,036.30	-	-	-	1,056,316.75	Hotel/Motel Tax - \$656,576.00
Disbursements	(33,273.30)	(218,206.45)	(247,022.60)	(14,007.19)	-	-	17,875.00	(494,634.54)	\$33,268.80 - Capital Transfer
<b>Ending Balance - January 31, 2010</b>	<b>367,429.86</b>	<b>925,559.39</b>	<b>27,067.95</b>	<b>133,739.66</b>	-	<b>1,300,000.00</b>	<b>(210,250.00)</b>	<b>2,543,546.86</b>	
Receipts	850.67	65,279.35	357,065.78	23,028.50	-	-	-	446,224.30	
Disbursements	(131,068.52)	(226,875.32)	(315,994.54)	(16,806.60)	-	-	-	(690,744.98)	\$131,065.78 - Capital Transfer 2/5/10
<b>Ending Balance - February 28, 2010</b>	<b>237,212.01</b>	<b>763,963.42</b>	<b>68,139.19</b>	<b>139,961.56</b>	-	<b>1,300,000.00</b>	<b>(210,250.00)</b>	<b>2,299,026.18</b>	
Receipts	10.03	80,917.11	234,196.00	101,695.55	-	-	-	416,818.69	
Disbursements	(27,198.80)	(208,189.92)	(236,495.07)	(9,330.50)	-	-	-	(481,214.29)	\$27,196.00 Capital Transfer 3/31/10
<b>Ending Balance - March 31, 2010</b>	<b>210,023.24</b>	<b>636,690.61</b>	<b>65,840.12</b>	<b>232,326.61</b>	-	<b>1,300,000.00</b>	<b>(210,250.00)</b>	<b>2,234,630.58</b>	
Receipts	1,545.78	189,164.13	227,798.01	32,611.03	-	-	-	451,118.95	
CD's Redeemed	1,107,875.00	-	-	-	-	(1,107,875.00)	-	-	CD's redeemed in April, 2010 - \$1,107,875.00
Disbursements	(8.23)	(227,740.92)	(240,549.92)	(134,287.70)	-	-	17,875.00	(584,711.77)	
<b>Ending Balance - April 30, 2010</b>	<b>1,319,435.79</b>	<b>598,113.82</b>	<b>53,088.21</b>	<b>130,649.94</b>	-	<b>192,125.00</b>	<b>(192,375.00)</b>	<b>2,101,037.76</b>	
Receipts	38.63	102,526.72	222,000.00	32,113.56	-	-	-	356,678.91	
CD's Purchased	(907,625.00)	-	-	-	-	907,625.00	-	-	CD's purchased - Horizon Bank
Disbursements	(75.81)	(222,336.15)	(211,101.02)	(41,315.50)	-	-	-	(474,828.48)	
<b>Ending Balance - May 31, 2010</b>	<b>411,773.61</b>	<b>478,304.39</b>	<b>63,987.19</b>	<b>121,448.00</b>	-	<b>1,099,750.00</b>	<b>(192,375.00)</b>	<b>1,982,888.19</b>	
Receipts	15.58	151,204.34	222,741.68	13,866.32	-	-	-	387,827.92	
Disbursements	(33,746.04)	(189,247.41)	(264,784.72)	(46,753.75)	-	-	-	(534,531.92)	\$33,741.68 Capital Transfer 6/2/10
<b>Ending Balance - June 30, 2010</b>	<b>378,043.15</b>	<b>440,261.32</b>	<b>21,944.15</b>	<b>88,560.57</b>	-	<b>1,099,750.00</b>	<b>(192,375.00)</b>	<b>1,836,184.19</b>	
Receipts	100,650.05	757,013.78	282,000.00	11,909.30	-	-	-	1,151,573.13	2010 PSDA - \$100,000, Hotel/Motel - \$656,576
CD's Redeemed	925,625.00	-	-	-	-	(925,625.00)	-	-	Horizon Bank - \$907,625, Old Nat - \$18,000
Disbursements	-	(282,438.20)	(266,741.43)	(10,725.95)	-	-	17,875.00	(542,030.58)	
<b>Ending Balance - July 31, 2010</b>	<b>1,404,318.20</b>	<b>914,836.90</b>	<b>37,202.72</b>	<b>89,743.92</b>	-	<b>174,125.00</b>	<b>(174,500.00)</b>	<b>2,445,726.74</b>	
Receipts	59.23	96,122.97	210,492.30	11,469.64	-	-	-	318,144.14	
Disbursements	(10,492.30)	(200,298.17)	(222,383.37)	(24,262.60)	-	-	-	(457,436.44)	\$10,492.30 Capital Transfer 8/5/10
<b>Ending Balance - August 31, 2010</b>	<b>1,393,885.13</b>	<b>810,661.70</b>	<b>25,311.65</b>	<b>76,950.96</b>	-	<b>174,125.00</b>	<b>(174,500.00)</b>	<b>2,306,434.44</b>	
Receipts	57.22	88,729.87	203,087.00	17,491.10	-	-	-	309,365.19	
Disbursements	(22,087.00)	(181,595.16)	(192,026.74)	(17,305.19)	-	-	-	(413,014.09)	\$22,087.00 Capital Transfer 9/29/10
<b>Ending Balance - September 30, 2010</b>	<b>1,371,855.35</b>	<b>717,796.41</b>	<b>36,371.91</b>	<b>77,136.87</b>	-	<b>174,125.00</b>	<b>(174,500.00)</b>	<b>2,202,785.54</b>	
Receipts	58.26	89,504.01	239,000.00	15,021.00	-	-	-	343,583.27	
Disbursements	-	(239,317.99)	(237,116.09)	(6,536.65)	-	-	17,875.00	(465,095.73)	
<b>Ending Balance - October 31, 2010</b>	<b>1,371,913.61</b>	<b>567,982.43</b>	<b>38,255.82</b>	<b>85,621.22</b>	-	<b>174,125.00</b>	<b>(156,625.00)</b>	<b>2,081,273.08</b>	
Receipts	2,017.52	146,698.31	236,870.83	47,833.25	-	-	-	433,419.91	
Disbursements	(28,870.83)	(208,352.08)	(224,845.02)	-	-	-	-	(462,067.93)	\$28,870.83 Capital Transfer 11/09/10
<b>Ending Balance - November 30, 2010</b>	<b>1,345,060.30</b>	<b>506,328.66</b>	<b>50,281.63</b>	<b>133,454.47</b>	-	<b>174,125.00</b>	<b>(156,625.00)</b>	<b>2,052,625.06</b>	
Receipts	54.94	212,311.22	586,680.61	77,888.89	-	-	-	876,935.66	\$31,385.27 Capital Transfer 12/23/10
Disbursements	(81,680.61)	(505,946.70)	(556,062.71)	(107,700.05)	-	-	156,625.00	(1,094,765.07)	\$50,295.34 Capital Transfer 12/06/10
<b>Ending Balance - December 31, 2010</b>	<b>1,263,434.63</b>	<b>212,693.18</b>	<b>80,899.53</b>	<b>103,643.31</b>	-	<b>174,125.00</b>	-	<b>1,834,795.65</b>	\$157,147.73 Old National loan payoff
Receipts	139.50	804,986.04	261,063.37	25,880.50	-	-	-	1,092,069.41	\$656,718.00 hotel/motel tax revenue (50%)
Investment Transfers	174,125.00	-	-	-	-	(174,125.00)	-	-	Old National CD matured, deposited to capital
Disbursements	(70,592.98)	(218,344.99)	(314,202.24)	(24,997.99)	-	-	-	(628,138.20)	\$70,592.98 Capital Transfer 1/12/11
<b>Ending Balance - January 31, 2011</b>	<b>1,367,106.15</b>	<b>799,334.23</b>	<b>27,760.66</b>	<b>104,525.82</b>	-	-	-	<b>2,298,726.86</b>	
Receipts	52.35	110,294.40	252,386.25	42,266.88	-	-	-	404,999.88	
Disbursements	(3,386.25)	(249,497.36)	(223,989.90)	(22,568.30)	-	-	-	(499,441.81)	\$3,386.25 Capital Transfer 2/11/11
<b>Ending Balance - February 28, 2011</b>	<b>1,363,772.25</b>	<b>660,131.27</b>	<b>56,157.01</b>	<b>124,224.40</b>	-	-	-	<b>2,204,284.93</b>	
Receipts	56.78	111,966.43	244,821.41	96,706.95	-	-	-	453,551.57	
Disbursements	(40,821.41)	(205,261.45)	(266,186.20)	(21,487.28)	-	-	-	(533,756.34)	Capital transfers - \$35,297.78 & \$5,523.63
<b>Ending Balance - March 31, 2011</b>	<b>1,323,007.62</b>	<b>566,836.25</b>	<b>34,792.22</b>	<b>199,444.07</b>	-	-	-	<b>2,124,080.16</b>	
Receipts	100,056.01	63,543.60	193,288.98	34,825.80	-	-	-	391,714.39	2011 PSDA - \$100,000 - deposited 4/18/11
Disbursements	-	(194,061.62)	(198,892.31)	-	-	-	-	(392,953.93)	
<b>Ending Balance - April 30, 2011</b>	<b>1,423,063.63</b>	<b>436,318.23</b>	<b>29,188.89</b>	<b>234,269.87</b>	-	-	-	<b>2,122,840.62</b>	

**Century Center Bank Statement Cash Summary**  
**September 30, 2006 through December 31, 2018**  
**Updated - January 2, 2019**

Month	Key Bank Capital & Investment Account	Key Bank Operating (1) Account	Key Bank A/P - Payroll Account	Key Bank Event Account	Key Bank Energy Bond (4) Account	Certificate of Deposit Capital	Old National Loan	Net	Notes
Receipts	60.22	212,075.93	206,931.25	13,586.50	-	-	-	432,653.90	
Disbursements	(7,931.25)	(199,547.31)	(215,943.26)	(159,803.20)	-	-	-	(583,225.02)	Capital transfers - \$7,931.25 - 5/12/11
<b>Ending Balance - May 31, 2011</b>	<b>1,415,192.60</b>	<b>448,846.85</b>	<b>20,176.88</b>	<b>88,053.17</b>	-	-	-	<b>1,972,269.50</b>	
Receipts	56.61	836,264.15	321,615.92	67,678.93	-	-	-	1,225,615.61	\$656,718 hotel/motel tax - 6/8/11
Disbursements	(53,615.92)	(268,432.99)	(243,021.25)	(75,856.42)	-	-	-	(640,926.58)	Capital transfers - \$53,615.92 - 6/10/11
<b>Ending Balance - June 30, 2011</b>	<b>1,361,633.29</b>	<b>1,016,678.01</b>	<b>98,771.55</b>	<b>79,875.68</b>	-	-	-	<b>2,556,958.53</b>	
Receipts	57.76	103,808.62	167,036.15	12,561.05	-	-	-	283,463.58	
Disbursements	(3,036.15)	(166,013.92)	(252,968.25)	(18,560.10)	-	-	-	(440,578.42)	Capital transfers - \$3,036.15 - 7/15/11
<b>Ending Balance - July 31, 2011</b>	<b>1,358,654.90</b>	<b>954,472.71</b>	<b>12,839.45</b>	<b>73,876.63</b>	-	-	-	<b>2,399,843.69</b>	
Receipts	31.75	61,175.27	210,190.51	6,620.35	-	-	-	278,017.88	
Investment Transfers	(900,000.00)	-	-	-	-	900,000.00	-	-	Lake City CD - matures 12/10/11
Disbursements	(1,215.51)	(210,105.60)	(198,767.67)	(5,663.42)	-	-	-	(415,752.20)	Capital transfer - \$1,190.51 - 8/2/11
<b>Ending Balance - August 31, 2011</b>	<b>457,471.14</b>	<b>805,542.38</b>	<b>24,262.29</b>	<b>74,833.56</b>	-	<b>900,000.00</b>	-	<b>2,262,109.37</b>	
Receipts	18.64	71,780.30	201,008.14	15,151.95	-	-	-	287,959.03	
Disbursements	(8,008.14)	(193,715.52)	(201,436.83)	(11,245.17)	-	-	-	(414,405.66)	Capital transfer - \$8,008.14 - 9/16/11
<b>Ending Balance - September 30, 2011</b>	<b>449,481.64</b>	<b>683,607.16</b>	<b>23,833.60</b>	<b>78,740.34</b>	-	<b>900,000.00</b>	-	<b>2,135,662.74</b>	
Receipts	19.09	149,592.64	203,600.00	22,647.75	-	-	-	375,859.48	
Disbursements	-	(204,242.35)	(211,921.44)	(19,379.19)	-	-	-	(435,542.98)	
<b>Ending Balance - October 31, 2011</b>	<b>449,500.73</b>	<b>628,957.45</b>	<b>15,512.16</b>	<b>82,008.90</b>	-	<b>900,000.00</b>	-	<b>2,075,979.24</b>	
Receipts	18.47	156,769.60	205,000.00	41,863.35	-	-	-	403,651.42	
Disbursements	-	(205,818.96)	(181,251.02)	(24,013.58)	-	-	-	(411,083.56)	
<b>Ending Balance - November 30, 2011</b>	<b>449,519.20</b>	<b>579,908.09</b>	<b>39,261.14</b>	<b>99,858.67</b>	-	<b>900,000.00</b>	-	<b>2,068,547.10</b>	
Receipts	926.24	177,985.33	273,388.24	117,472.32	-	-	-	569,772.13	
Investment Transfers	900,000.00	-	-	-	-	(900,000.00)	-	-	Lake City CD - matured 12/10/11
Disbursements	(6,388.24)	(267,671.45)	(280,715.26)	(111,129.50)	-	-	-	(665,904.45)	Capital transfer - \$6,388.24 - 12/02/11
<b>Ending Balance - December 31, 2011</b>	<b>1,344,057.20</b>	<b>490,221.97</b>	<b>31,934.12</b>	<b>106,201.49</b>	-	-	-	<b>1,972,414.78</b>	
Receipts	56.92	748,591.32	172,000.00	25,630.50	-	-	-	946,278.74	Hotel/Motel - \$656,718.00 - 1/20/12
Disbursements	-	(172,135.09)	(193,998.20)	(19,725.60)	-	-	-	(385,858.89)	
<b>Ending Balance - January 31, 2012</b>	<b>1,344,114.12</b>	<b>1,066,678.20</b>	<b>9,935.92</b>	<b>112,106.39</b>	-	-	-	<b>2,532,834.63</b>	
Receipts	53.26	94,841.79	218,000.00	27,732.20	-	-	-	340,627.25	
Disbursements	-	(218,436.80)	(208,693.39)	(13,840.57)	-	-	-	(440,970.76)	
<b>Ending Balance - February 29, 2012</b>	<b>1,344,167.38</b>	<b>943,083.19</b>	<b>19,242.53</b>	<b>125,998.02</b>	-	-	-	<b>2,432,491.12</b>	
Receipts	53.98	124,814.80	218,500.00	64,115.26	-	-	-	407,484.04	
Disbursements	-	(218,936.30)	(199,140.56)	(13,187.92)	-	-	-	(431,264.78)	
<b>Ending Balance - March 31, 2012</b>	<b>1,344,221.36</b>	<b>848,961.69</b>	<b>38,601.97</b>	<b>176,925.36</b>	-	-	-	<b>2,408,710.38</b>	
Receipts	100,028.03	157,841.38	338,485.00	33,473.60	-	-	-	629,828.01	2012 PSDA revenue - \$100,000.00 - 4/3/12
Disbursements	(134,485.00)	(205,585.18)	(354,223.14)	(87,879.79)	-	-	-	(782,173.11)	Capital transfer - \$134,485.00 - 4/4/12 - chairs
<b>Ending Balance - April 30, 2012</b>	<b>1,309,764.39</b>	<b>801,217.89</b>	<b>22,863.83</b>	<b>122,519.17</b>	-	-	-	<b>2,256,365.28</b>	
Receipts	22.19	201,886.20	290,000.00	13,339.00	-	-	-	505,247.39	
Disbursements	-	(290,751.68)	(287,972.27)	(36,602.85)	-	-	-	(615,326.80)	
<b>Ending Balance - May 31, 2012</b>	<b>1,309,786.58</b>	<b>712,352.41</b>	<b>24,891.56</b>	<b>99,255.32</b>	-	-	-	<b>2,146,285.87</b>	
Receipts	21.47	770,352.87	209,764.00	17,927.81	-	-	-	998,066.15	\$656,718 hotel/motel tax - 6/29/12
Disbursements	-	(211,016.95)	(213,349.61)	(28,270.25)	-	-	-	(452,636.81)	
<b>Ending Balance - June 30, 2012</b>	<b>1,309,808.05</b>	<b>1,271,688.33</b>	<b>21,305.95</b>	<b>88,912.88</b>	-	-	-	<b>2,691,715.21</b>	
Receipts	22.12	112,499.33	210,340.00	9,324.80	-	-	-	332,186.25	
Disbursements	(21,340.00)	(189,928.86)	(223,919.06)	(24,495.80)	-	-	-	(459,683.72)	Capital transfer - \$21,340.00 - 7/31/12 - lighting
<b>Ending Balance - July 31, 2012</b>	<b>1,288,490.17</b>	<b>1,194,258.80</b>	<b>7,726.89</b>	<b>73,741.88</b>	-	-	-	<b>2,564,217.74</b>	
Receipts	21.82	77,230.81	209,550.00	33,826.25	-	-	-	320,628.88	
Disbursements	-	(209,703.83)	(201,170.60)	(14,478.05)	-	-	-	(425,352.48)	
<b>Ending Balance - August 31, 2012</b>	<b>1,288,511.99</b>	<b>1,061,785.78</b>	<b>16,106.29</b>	<b>93,090.08</b>	-	-	-	<b>2,459,494.14</b>	
Receipts	21.01	114,360.28	195,508.45	16,459.19	-	-	-	326,348.93	
Disbursements	(8,508.45)	(187,788.34)	(202,181.55)	(22,227.87)	-	-	-	(420,706.21)	Capital transfer - \$8,508.45 - 9/07/12 - lighting
<b>Ending Balance - September 30, 2012</b>	<b>1,280,024.55</b>	<b>988,357.72</b>	<b>9,433.19</b>	<b>87,321.40</b>	-	-	-	<b>2,365,136.86</b>	
Receipts	21.65	108,825.26	209,811.25	30,082.70	-	-	-	348,740.86	
Disbursements	(5,211.25)	(204,769.72)	(209,988.03)	-	-	-	-	(419,969.00)	Capital transfer - \$5,211.25 - 10/18/12 - lighting
<b>Ending Balance - October 31, 2012</b>	<b>1,274,834.95</b>	<b>892,413.26</b>	<b>9,256.41</b>	<b>117,404.10</b>	-	-	-	<b>2,293,908.72</b>	
Receipts	20.90	222,529.99	243,000.00	17,760.05	-	-	-	483,310.94	
Disbursements	-	(246,026.22)	(210,661.06)	(51,049.11)	-	-	-	(507,736.39)	
<b>Ending Balance - November 30, 2012</b>	<b>1,274,855.85</b>	<b>868,917.03</b>	<b>41,595.35</b>	<b>84,115.04</b>	-	-	-	<b>2,269,483.27</b>	

**Century Center Bank Statement Cash Summary**  
**September 30, 2006 through December 31, 2018**  
**Updated - January 2, 2019**

Month	Key Bank Capital & Investment Account	Key Bank Operating (1) Account	Key Bank A/P - Payroll Account	Key Bank Event Account	Key Bank Energy Bond (4) Account	Certificate of Deposit Capital	Old National Loan	Net	Notes
Receipts	21.59	95,550.24	183,500.00	30,937.30	-	-	-	310,009.13	
Disbursements	-	(184,731.83)	(213,843.32)	(29.76)	-	-	-	(398,604.91)	
<b>Ending Balance - December 31, 2012</b>	<b>1,274,877.44</b>	<b>779,735.44</b>	<b>11,252.03</b>	<b>115,022.58</b>	-	-	-	<b>2,180,887.49</b>	
Receipts	100,022.04	799,825.99	189,000.00	51,115.09	-	-	-	1,139,963.12	\$100,000 PSDA, \$656,718 hotel/motel tax
Disbursements	-	(190,829.54)	(192,998.52)	(21,746.26)	-	-	-	(405,574.32)	
<b>Ending Balance - January 31, 2013</b>	<b>1,374,899.48</b>	<b>1,388,731.89</b>	<b>7,253.51</b>	<b>144,391.41</b>	-	-	-	<b>2,915,276.29</b>	
Receipts	21.10	127,932.61	246,289.06	35,551.14	-	-	-	409,793.91	
Disbursements	-	(247,801.41)	(236,543.51)	(19,120.50)	-	-	-	(503,465.42)	
<b>Ending Balance - February 28, 2013</b>	<b>1,374,920.58</b>	<b>1,268,863.09</b>	<b>16,999.06</b>	<b>160,822.05</b>	-	-	-	<b>2,821,604.78</b>	
Receipts	23.35	115,846.35	248,600.00	59,648.57	-	-	-	424,118.27	
Disbursements	-	(249,167.84)	(249,478.81)	(20,481.65)	-	-	-	(519,128.30)	
<b>Ending Balance - March 31, 2013</b>	<b>1,374,943.93</b>	<b>1,135,541.60</b>	<b>16,120.25</b>	<b>199,988.97</b>	-	-	-	<b>2,726,594.75</b>	
Receipts	22.60	75,931.20	225,000.00	20,852.20	-	-	-	321,806.00	
Disbursements	-	(226,584.81)	(227,394.04)	-	-	-	-	(453,978.85)	
<b>Ending Balance - April 30, 2013</b>	<b>1,374,966.53</b>	<b>984,887.99</b>	<b>13,726.21</b>	<b>220,841.17</b>	-	-	-	<b>2,594,421.90</b>	
Receipts	23.36	111,302.34	267,047.12	24,893.68	-	-	-	403,266.50	
Disbursements	-	(267,861.87)	(234,882.39)	-	-	-	-	(502,744.26)	
<b>Ending Balance - May 31, 2013</b>	<b>1,374,989.89</b>	<b>828,328.46</b>	<b>45,890.94</b>	<b>245,734.85</b>	-	-	-	<b>2,494,944.14</b>	
Receipts	22.60	748,674.23	331,000.00	15,904.40	-	-	-	1,095,601.23	\$656,718 hotel/motel tax rcd 6/21/2013
Disbursements	-	(332,662.04)	(287,565.49)	-	-	-	-	(620,227.53)	
<b>Ending Balance - June 30, 2013</b>	<b>1,375,012.49</b>	<b>1,244,340.65</b>	<b>89,325.45</b>	<b>261,639.25</b>	-	-	-	<b>2,970,317.84</b>	SMG New manager 7/1/2013
Receipts	23.36	140,163.94	133,000.00	50,996.02	-	-	-	324,183.32	
Disbursements	-	(149,636.54)	(213,956.14)	(11.87)	-	-	-	(363,604.55)	
<b>Ending Balance - July 31, 2013</b>	<b>1,375,035.85</b>	<b>1,234,868.05</b>	<b>8,369.31</b>	<b>312,623.40</b>	-	-	-	<b>2,930,896.61</b>	
Receipts	575,029.02	95,176.24	412,248.40	48,802.09	-	-	-	1,131,255.75	SMG Capital Contribution - \$575,000 - 8/13/13
Disbursements	-	(412,189.60)	(347,913.30)	(21.75)	-	-	-	(760,124.65)	
<b>Ending Balance - August 31, 2013</b>	<b>1,950,064.87</b>	<b>917,854.69</b>	<b>72,704.41</b>	<b>361,403.74</b>	-	-	-	<b>3,302,027.71</b>	
Receipts	32.06	384,542.90	266,000.00	81,812.63	-	-	-	732,387.59	
Disbursements	-	(266,363.77)	(282,771.45)	(300,050.50)	-	-	-	(849,185.72)	
<b>Ending Balance - September 30, 2013</b>	<b>1,950,096.93</b>	<b>1,036,033.82</b>	<b>55,932.96</b>	<b>143,165.87</b>	-	-	-	<b>3,185,229.58</b>	
Receipts	32.66	188,426.94	498,570.14	193,864.57	-	-	-	880,894.31	
Disbursements	(30,636.59)	(456,462.97)	(540,304.89)	(1,545.90)	-	-	-	(1,028,950.35)	Capital account transfers - \$30,636.59
<b>Ending Balance - October 31, 2013</b>	<b>1,919,493.00</b>	<b>767,997.79</b>	<b>14,198.21</b>	<b>335,484.54</b>	-	-	-	<b>3,037,173.54</b>	
Receipts	31.55	157,548.98	356,000.00	48,097.51	-	-	-	561,678.04	
Disbursements	-	(356,898.51)	(348,837.55)	(11.60)	-	-	-	(705,747.66)	
<b>Ending Balance - November 30, 2013</b>	<b>1,919,524.55</b>	<b>568,648.26</b>	<b>21,360.66</b>	<b>383,570.45</b>	-	-	-	<b>2,893,103.92</b>	
Receipts	31.68	410,792.35	428,631.87	109,427.83	-	-	-	948,883.73	
Disbursements	(161,858.87)	(266,201.40)	(319,690.06)	(300,384.45)	-	-	-	(1,048,134.78)	Three Capital account transfers - \$161,858.87
<b>Ending Balance - December 31, 2013</b>	<b>1,757,697.36</b>	<b>713,239.21</b>	<b>130,302.47</b>	<b>192,613.83</b>	-	-	-	<b>2,793,852.87</b>	
Receipts	29.85	101,422.67	421,423.70	40,495.71	-	-	-	563,371.93	
Disbursements	-	(419,737.72)	(464,453.06)	(25.20)	-	-	-	(884,215.98)	
<b>Ending Balance - January 31, 2014</b>	<b>1,757,727.21</b>	<b>394,924.16</b>	<b>87,273.11</b>	<b>233,084.34</b>	-	-	-	<b>2,473,008.82</b>	
Receipts	26.97	774,640.47	461,284.83	114,336.46	-	-	-	1,350,288.73	Hotel/Motel tax deposit of \$656,725.00
Disbursements	-	(460,415.80)	(466,553.59)	(24.40)	-	-	-	(926,993.79)	
<b>Ending Balance - February 28, 2014</b>	<b>1,757,754.18</b>	<b>709,148.83</b>	<b>82,004.35</b>	<b>347,396.40</b>	-	-	-	<b>2,896,303.76</b>	
Receipts	29.86	464,972.72	340,184.60	47,070.34	-	-	-	852,257.52	
Disbursements	-	(341,087.20)	(359,076.67)	(300,022.60)	-	-	-	(1,000,186.47)	Event Acct transfer to Operating Acct
<b>Ending Balance - March 31, 2014</b>	<b>1,757,784.04</b>	<b>833,034.35</b>	<b>63,112.28</b>	<b>94,444.14</b>	-	-	-	<b>2,748,374.81</b>	
Receipts	28.89	112,506.06	302,388.81	23,158.01	-	-	-	438,081.77	
Disbursements	-	(301,144.90)	(309,555.81)	(130.45)	-	-	-	(610,831.16)	Operating Acct transfer to Payroll/AP Account
<b>Ending Balance - April 30, 2014</b>	<b>1,757,812.93</b>	<b>644,395.51</b>	<b>55,945.28</b>	<b>117,471.70</b>	-	-	-	<b>2,575,625.42</b>	
Receipts	29.86	409,269.06	572,096.86	97,304.13	-	-	-	1,078,699.91	
Disbursements	-	(573,580.19)	(526,323.86)	(200,011.00)	-	-	-	(1,299,915.05)	Operating Acct transfer to Payroll/AP Account
<b>Ending Balance - May 31, 2014</b>	<b>1,757,842.79</b>	<b>480,084.38</b>	<b>101,718.28</b>	<b>14,764.83</b>	-	-	-	<b>2,354,410.28</b>	
Receipts	28.90	149,402.06	443,434.70	97,800.47	-	-	-	690,666.13	
Disbursements	-	(443,788.17)	(372,049.93)	(554.18)	-	-	-	(816,392.28)	Operating Acct transfer to Payroll/AP Account
<b>Ending Balance - June 30, 2014</b>	<b>1,757,871.69</b>	<b>185,698.27</b>	<b>173,103.05</b>	<b>112,011.12</b>	-	-	-	<b>2,228,684.13</b>	
Receipts	29.86	830,020.71	372,871.74	56,609.36	-	-	-	1,259,531.67	Hotel/Motel tax deposit of \$667,785.42
Disbursements	-	(380,041.97)	(464,911.30)	(37.80)	-	-	-	(844,991.07)	Operating Acct transfer to Payroll/AP Account
<b>Ending Balance - July 31, 2014</b>	<b>1,757,901.55</b>	<b>635,677.01</b>	<b>81,063.49</b>	<b>168,582.68</b>	-	-	-	<b>2,643,224.73</b>	

**Century Center Bank Statement Cash Summary**  
**September 30, 2006 through December 31, 2018**  
**Updated - January 2, 2019**

Month	Key Bank Capital & Investment Account	Key Bank Operating (1) Account	Key Bank A/P - Payroll Account	Key Bank Event Account	Key Bank Energy Bond (4) Account	Certificate of Deposit Capital	Old National Loan	Net	Notes
Receipts	29.11	471,201.02	495,826.23	45,634.73	-	-	-	1,012,691.09	Transferred from capital acct for elevator
Disbursements	(339,363.00)	(495,947.72)	(412,931.96)	(18.90)	-	-	-	(1,248,261.58)	Operating Acct transfer to Payroll/AP Account
<b>Ending Balance - August 31, 2014</b>	<b>1,418,567.66</b>	<b>610,930.31</b>	<b>163,957.76</b>	<b>214,198.51</b>	-	-	-	<b>2,407,654.24</b>	
Receipts	23.32	322,224.81	200,557.10	11,681.55	-	-	-	534,486.78	
Disbursements	-	(202,291.27)	(268,004.45)	(11.30)	-	-	-	(470,307.02)	Operating Acct transfer to Payroll/AP Account
<b>Ending Balance - September 30, 2014</b>	<b>1,418,590.98</b>	<b>730,863.85</b>	<b>96,510.41</b>	<b>225,868.76</b>	-	-	-	<b>2,471,834.00</b>	
Receipts	24.10	414,271.22	343,500.00	37,953.44	-	-	-	795,748.76	Event Acct transfer to Operating Acct
Disbursements	-	(347,731.17)	(285,198.23)	(200,025.00)	-	-	-	(832,954.40)	Operating Acct transfer to Payroll/AP Account
<b>Ending Balance - October 31, 2014</b>	<b>1,418,615.08</b>	<b>797,403.90</b>	<b>154,812.18</b>	<b>63,797.20</b>	-	-	-	<b>2,434,628.36</b>	
Receipts	23.32	296,939.07	270,175.24	16,467.06	-	-	-	583,604.69	
Disbursements	-	(273,417.64)	(315,050.51)	(31.80)	-	-	-	(588,499.95)	Operating Acct transfer to Payroll/AP Account
<b>Ending Balance - November 30, 2014</b>	<b>1,418,638.40</b>	<b>820,925.33</b>	<b>109,936.91</b>	<b>80,232.46</b>	-	-	-	<b>2,429,733.10</b>	
Receipts	24.10	212,738.77	412,700.51	63,174.15	-	-	-	688,637.53	
Disbursements	-	(435,002.87)	(375,061.70)	(12.40)	-	-	-	(810,076.97)	Operating Acct transfer to Payroll/AP Account
<b>Ending Balance - December 31, 2014</b>	<b>1,418,662.50</b>	<b>598,661.23</b>	<b>147,575.72</b>	<b>143,394.21</b>	-	-	-	<b>2,308,293.66</b>	
Receipts	24.09	58,843.70	211,756.71	14,391.58	-	-	-	285,016.08	
Disbursements	-	(217,591.79)	(319,020.63)	(1.20)	-	-	-	(536,613.62)	Operating Acct transfer to Payroll/AP Account
<b>Ending Balance - January 31, 2015</b>	<b>1,418,686.59</b>	<b>439,913.14</b>	<b>40,311.80</b>	<b>157,784.59</b>	-	-	-	<b>2,056,696.12</b>	
Receipts	20.89	849,465.78	317,237.50	61,785.95	-	-	-	1,228,510.12	Hotel/Motel tax deposit of \$656,725.00
Disbursements (3)	(66,156.00)	(318,508.02)	(296,453.62)	(21.60)	-	-	-	(681,139.24)	Operating Acct transfer to Payroll/AP Account
<b>Ending Balance - February 28, 2015</b>	<b>1,352,551.48</b>	<b>970,870.90</b>	<b>61,095.68</b>	<b>219,548.94</b>	-	-	-	<b>2,604,067.00</b>	
Receipts	22.98	356,611.30	304,000.00	47,680.20	-	-	-	708,314.48	
Disbursements	-	(305,619.56)	(309,094.58)	(97,861.79)	-	-	-	(712,575.93)	Operating Acct transfer to Payroll/AP Account
<b>Ending Balance - March 31, 2015</b>	<b>1,352,574.46</b>	<b>1,021,862.64</b>	<b>56,001.10</b>	<b>169,367.35</b>	-	-	-	<b>2,599,805.55</b>	
Receipts	22.23	241,288.96	391,753.56	65,870.52	-	-	-	698,935.27	
Disbursements	-	(390,103.99)	(325,327.76)	(20.20)	-	-	-	(715,451.95)	Operating Acct transfer to Payroll/AP Account
<b>Ending Balance - April 30, 2015</b>	<b>1,352,596.69</b>	<b>873,047.61</b>	<b>122,426.90</b>	<b>235,217.67</b>	-	-	-	<b>2,583,288.87</b>	
Receipts	73.85	185,423.53	396,481.76	75,987.70	50,000.00	-	-	707,966.84	Transferred from Capital Acct to Bond Account
Disbursements	(50,000.00)	(419,083.83)	(328,039.60)	-	-	-	-	(797,123.43)	Operating Acct transfer to Payroll/AP Account
<b>Ending Balance - May 31, 2015</b>	<b>1,302,670.54</b>	<b>639,387.31</b>	<b>190,869.06</b>	<b>311,205.37</b>	<b>50,000.00</b>	-	-	<b>2,494,132.28</b>	
Receipts	106.36	239,284.14	506,368.11	47,725.93	-	-	-	793,484.54	Transferred from Capital Acct to AP Account
Disbursements (5)	(130,439.80)	(371,129.19)	(453,373.45)	(19.00)	6.71	-	-	(954,954.73)	Operating Acct transfer to Payroll/AP Account
<b>Ending Balance - June 30, 2015</b>	<b>1,172,337.10</b>	<b>507,542.26</b>	<b>243,863.72</b>	<b>358,912.30</b>	<b>50,006.71</b>	-	-	<b>2,332,662.09</b>	
Receipts	95.48	752,685.10	639,100.06	60,189.71	-	-	-	1,452,070.35	Transferred from Capital Acct to AP Account
Disbursements	(87,734.96)	(554,681.06)	(584,887.77)	(15.20)	4.25	-	-	(1,227,314.74)	Operating Acct transfer to Payroll/AP Account
<b>Ending Balance - July 31, 2015</b>	<b>1,084,697.62</b>	<b>705,546.30</b>	<b>298,076.01</b>	<b>419,086.81</b>	<b>50,010.96</b>	-	-	<b>2,557,417.70</b>	
Receipts	91.91	756,185.21	162,439.82	81,619.64	-	-	-	1,000,336.58	Transferred from Capital Acct to AP Account
Disbursements	(4,190.00)	(155,481.74)	(382,233.97)	(359,101.29)	4.24	-	-	(901,002.76)	Operating Acct transfer to Payroll/AP Account
<b>Ending Balance - August 31, 2015</b>	<b>1,080,599.53</b>	<b>1,306,249.77</b>	<b>78,281.86</b>	<b>141,605.16</b>	<b>50,015.20</b>	-	-	<b>2,656,751.52</b>	
Receipts	88.82	184,555.53	293,266.82	26,468.00	-	-	-	504,379.17	
Disbursements	-	(294,795.02)	(344,321.33)	(23.80)	4.11	-	-	(639,136.04)	Operating Acct transfer to Payroll/AP Account
<b>Ending Balance - September 30, 2015</b>	<b>1,080,688.35</b>	<b>1,196,010.28</b>	<b>27,227.35</b>	<b>168,049.36</b>	<b>50,019.31</b>	-	-	<b>2,521,994.65</b>	
Receipts	91.79	79,081.20	361,000.00	66,870.35	4.25	-	-	507,047.59	
Disbursements	-	(362,815.38)	(364,394.48)	(23.20)	-	-	-	(727,233.06)	Operating Acct transfer to Payroll/AP Account
<b>Ending Balance - October 31, 2015</b>	<b>1,080,780.14</b>	<b>912,276.10</b>	<b>23,832.87</b>	<b>234,896.51</b>	<b>50,023.56</b>	-	-	<b>2,301,809.18</b>	
Receipts	85.56	309,376.36	427,736.09	116,334.06	4.11	-	-	853,536.18	Operating Acct transfer to Payroll/AP Account
Disbursements	(78,878.81)	(346,762.17)	(361,375.67)	-	-	-	-	(787,016.65)	Capital Account purchase of assets
<b>Ending Balance - November 30, 2015</b>	<b>1,001,986.89</b>	<b>874,890.29</b>	<b>90,193.29</b>	<b>351,230.57</b>	<b>50,027.67</b>	-	-	<b>2,368,328.71</b>	
Receipts	85.11	194,971.17	441,180.99	40,375.82	4.25	-	-	676,617.34	Operating Acct transfer to Payroll/AP Account
Disbursements	-	(443,588.23)	(449,318.79)	-	-	-	-	(892,907.02)	
<b>Ending Balance - December 31, 2015</b>	<b>1,002,072.00</b>	<b>626,273.23</b>	<b>82,055.49</b>	<b>391,606.39</b>	<b>50,031.92</b>	-	-	<b>2,152,039.03</b>	
Receipts	84.87	1,087,354.56	296,000.00	33,855.30	4.24	-	-	1,417,298.97	Hotel/Motel Tax deposit
Disbursements	-	(298,550.34)	(302,791.32)	(272,655.19)	-	-	-	(873,996.85)	Operating Acct transfer to Payroll/AP Account
<b>Ending Balance - January 31, 2016</b>	<b>1,002,156.87</b>	<b>1,415,077.45</b>	<b>75,264.17</b>	<b>152,806.50</b>	<b>50,036.16</b>	-	-	<b>2,695,341.15</b>	
Receipts	79.41	387,948.55	295,353.74	86,520.70	3.97	-	-	769,906.37	
Disbursements	-	(289,127.72)	(355,903.31)	-	-	-	-	(645,031.03)	Operating Acct transfer to Payroll/AP Account
<b>Ending Balance - February 29, 2016</b>	<b>1,002,236.28</b>	<b>1,513,898.28</b>	<b>14,714.60</b>	<b>239,327.20</b>	<b>50,040.13</b>	-	-	<b>2,820,216.49</b>	

**Century Center Bank Statement Cash Summary**  
**September 30, 2006 through December 31, 2018**  
**Updated - January 2, 2019**

Month	Key Bank Capital & Investment Account	Key Bank Operating (1) Account	Key Bank A/P - Payroll Account	Key Bank Event Account	Key Bank Energy Bond (4) Account	Certificate of Deposit Capital	Old National Loan	Net	Notes
Receipts	84.89	250,931.29	496,041.69	30,291.90	4.23	-	-	777,354.00	
Disbursements	-	(499,898.29)	(377,432.42)	-	-	-	-	(877,330.71)	Operating Acct transfer to Payroll/AP Account
<b>Ending Balance - March 31, 2016</b>	<b>1,002,321.17</b>	<b>1,264,931.28</b>	<b>133,323.87</b>	<b>269,619.10</b>	<b>50,044.36</b>	-	-	<b>2,720,239.78</b>	
Receipts	81.95	275,214.67	260,247.49	49,273.44	4.11	-	-	584,821.66	
Disbursements	(38,747.49)	(224,885.39)	(285,995.70)	(115,435.21)	-	-	-	(665,063.79)	Operating Acct transfer to Payroll/AP Account
<b>Ending Balance - April 30, 2016</b>	<b>963,655.63</b>	<b>1,315,260.56</b>	<b>107,575.66</b>	<b>203,457.33</b>	<b>50,048.47</b>	-	-	<b>2,639,997.65</b>	
Receipts	81.63	240,129.13	380,021.92	96,215.86	4.24	-	-	716,452.78	
Disbursements	-	(385,303.75)	(397,859.91)	-	-	-	-	(783,163.66)	Operating Acct transfer to Payroll/AP Account
<b>Ending Balance - May 31, 2016</b>	<b>963,737.26</b>	<b>1,170,085.94</b>	<b>89,737.67</b>	<b>299,673.19</b>	<b>50,052.71</b>	-	-	<b>2,573,286.77</b>	
Receipts	76.38	274,182.54	466,551.37	36,993.89	4.10	-	-	777,808.28	
Disbursements	(56,406.00)	(436,001.88)	(566,902.71)	-	-	-	-	(1,059,310.59)	Operating Acct transfer to Payroll/AP Account
<b>Ending Balance - June 30, 2016</b>	<b>907,407.64</b>	<b>1,008,266.60</b>	<b>(10,613.67)</b>	<b>336,667.08</b>	<b>50,056.81</b>	-	-	<b>2,291,784.46</b>	
Receipts	75.83	804,071.05	455,710.46	40,268.01	4.24	-	-	1,300,129.59	Hotel/Motel Tax deposit
Disbursements	(13,848.00)	(445,063.37)	(344,559.63)	-	-	-	-	(803,471.00)	Operating Acct transfer to Payroll/AP Account
<b>Ending Balance - July 31, 2016</b>	<b>893,635.47</b>	<b>1,367,274.28</b>	<b>100,537.16</b>	<b>376,935.09</b>	<b>50,061.05</b>	-	-	<b>2,788,443.05</b>	
Receipts	75.24	583,915.04	337,875.60	113,162.76	4.24	-	-	1,035,032.88	
Disbursements	(9,001.00)	(329,598.99)	(394,783.51)	(359,858.00)	-	-	-	(1,093,241.50)	Operating Acct transfer to Payroll/AP Account
<b>Ending Balance - August 31, 2016</b>	<b>884,709.71</b>	<b>1,621,590.33</b>	<b>43,629.25</b>	<b>130,239.85</b>	<b>50,065.29</b>	-	-	<b>2,730,234.43</b>	
Receipts	72.52	310,514.74	350,042.45	59,410.07	4.10	-	-	720,043.88	
Disbursements	-	(351,665.07)	(348,708.86)	-	-	-	-	(700,373.93)	Operating Acct transfer to Payroll/AP Account
<b>Ending Balance - September 30, 2016</b>	<b>884,782.23</b>	<b>1,580,440.00</b>	<b>44,962.84</b>	<b>189,649.92</b>	<b>50,069.39</b>	-	-	<b>2,749,904.38</b>	
Receipts	74.40	247,106.47	414,644.77	69,479.43	4.24	-	-	731,309.31	
Disbursements	(12,544.77)	(402,066.09)	(377,230.88)	-	-	-	-	(791,841.74)	Operating Acct transfer to Payroll/AP Account
<b>Ending Balance - October 31, 2016</b>	<b>872,311.86</b>	<b>1,425,480.38</b>	<b>82,376.73</b>	<b>259,129.35</b>	<b>50,073.63</b>	-	-	<b>2,689,371.95</b>	
Receipts	71.51	89,720.05	400,000.00	89,258.50	4.11	-	-	579,054.17	
Disbursements	-	(401,731.09)	(362,262.24)	-	-	-	-	(763,993.33)	Operating Acct transfer to Payroll/AP Account
<b>Ending Balance - November 30, 2016</b>	<b>872,383.37</b>	<b>1,113,469.34</b>	<b>120,114.49</b>	<b>348,387.85</b>	<b>50,077.74</b>	-	-	<b>2,504,432.79</b>	
Receipts	73.62	220,133.14	296,716.53	20,572.50	4.24	-	-	537,500.03	
Disbursements	(6,470.52)	(291,798.75)	(367,158.67)	-	-	-	-	(665,427.94)	Operating Acct transfer to Payroll/AP Account
<b>Ending Balance - December 31, 2016</b>	<b>865,986.47</b>	<b>1,041,803.73</b>	<b>49,672.35</b>	<b>368,960.35</b>	<b>50,081.98</b>	-	-	<b>2,376,504.88</b>	
Receipts	73.55	961,797.36	302,676.50	43,015.25	4.25	-	-	1,307,566.91	Hotel/Motel Tax deposit
Disbursements	-	(303,569.10)	(376,328.63)	-	-	-	-	(679,897.73)	Operating Acct transfer to Payroll/AP Account
<b>Ending Balance - January 31, 2017</b>	<b>866,060.02</b>	<b>1,700,031.99</b>	<b>(23,979.78)</b>	<b>411,975.60</b>	<b>50,086.23</b>	-	-	<b>3,004,174.06</b>	
Receipts	66.44	453,887.64	400,218.83	43,463.50	3.85	-	-	897,640.26	
Disbursements	-	(402,774.18)	(335,896.97)	(259,539.62)	-	-	-	(998,210.77)	Operating Acct transfer to Payroll/AP Account
<b>Ending Balance - February 28, 2017</b>	<b>866,126.46</b>	<b>1,751,145.45</b>	<b>40,342.08</b>	<b>195,899.48</b>	<b>50,090.08</b>	-	-	<b>2,903,603.55</b>	
Receipts	73.56	295,905.80	400,070.00	108,505.54	4.25	-	-	804,559.15	
Disbursements	-	(462,174.00)	(375,223.60)	(117,764.41)	-	-	-	(955,162.01)	Operating Acct transfer to Payroll/AP Account
<b>Ending Balance - March 31, 2017</b>	<b>866,200.02</b>	<b>1,584,877.25</b>	<b>65,188.48</b>	<b>186,640.61</b>	<b>50,094.33</b>	-	-	<b>2,753,000.69</b>	
Receipts	71.20	329,271.45	300,000.00	70,091.51	4.12	-	-	699,438.28	
Disbursements	-	(302,066.04)	(320,537.40)	(65,189.08)	-	-	-	(687,792.52)	Operating Acct transfer to Payroll/AP Account
<b>Ending Balance - April 30, 2017</b>	<b>866,271.22</b>	<b>1,612,082.66</b>	<b>44,651.08</b>	<b>191,543.04</b>	<b>50,098.45</b>	-	-	<b>2,764,646.45</b>	
Receipts	73.58	342,687.99	400,198.24	83,250.85	4.25	-	-	826,214.91	
Disbursements	-	(420,209.78)	(351,624.94)	(160,519.12)	-	-	-	(932,353.84)	Operating Acct transfer to Payroll/AP Account
<b>Ending Balance - May 31, 2017</b>	<b>866,344.80</b>	<b>1,534,560.87</b>	<b>93,224.38</b>	<b>114,274.77</b>	<b>50,102.70</b>	-	-	<b>2,658,507.52</b>	
Receipts	71.21	247,477.88	400,720.00	78,166.43	4.12	-	-	726,439.64	
Disbursements	-	(402,155.97)	(427,564.61)	(71,319.68)	-	-	-	(901,040.26)	Operating Acct transfer to Payroll/AP Account
<b>Ending Balance - June 30, 2017</b>	<b>866,416.01</b>	<b>1,379,882.78</b>	<b>66,379.77</b>	<b>121,121.52</b>	<b>50,106.82</b>	-	-	<b>2,483,906.90</b>	
Receipts	73.58	826,232.30	430,000.00	11,247.60	4.26	-	-	1,267,557.74	Hotel/Motel Tax deposit
Disbursements	-	(432,979.30)	(454,883.07)	(8,997.96)	-	-	-	(896,860.33)	Operating Acct transfer to Payroll/AP Account
<b>Ending Balance - July 31, 2017</b>	<b>866,489.59</b>	<b>1,773,135.78</b>	<b>41,496.70</b>	<b>123,371.16</b>	<b>50,111.08</b>	-	-	<b>2,854,604.31</b>	
Receipts	73.60	332,585.88	550,425.00	66,177.95	4.25	-	-	949,266.68	
Disbursements	-	(554,038.32)	(468,294.18)	(61,805.66)	-	-	-	(1,084,138.16)	Operating Acct transfer to Payroll/AP Account
<b>Ending Balance - August 31, 2017</b>	<b>866,563.19</b>	<b>1,551,683.34</b>	<b>123,627.52</b>	<b>127,743.45</b>	<b>50,115.33</b>	-	-	<b>2,719,732.83</b>	
Receipts	71.23	323,875.56	326,641.00	18,087.30	4.12	-	-	668,679.21	
Disbursements	-	(328,212.82)	(323,933.13)	(36,608.60)	-	-	-	(688,754.55)	Operating Acct transfer to Payroll/AP Account
<b>Ending Balance - September 30, 2017</b>	<b>866,634.42</b>	<b>1,547,346.08</b>	<b>126,335.39</b>	<b>109,222.15</b>	<b>50,119.45</b>	-	-	<b>2,699,657.49</b>	
Receipts	73.60	357,492.33	328,759.66	52,107.99	4.26	-	-	738,437.84	
Disbursements	-	(328,534.64)	(395,820.99)	(71,321.72)	-	-	-	(795,677.35)	Operating Acct transfer to Payroll/AP Account
<b>Ending Balance - October 31, 2017</b>	<b>866,708.02</b>	<b>1,576,303.77</b>	<b>59,274.06</b>	<b>90,008.42</b>	<b>50,123.71</b>	-	-	<b>2,642,417.98</b>	

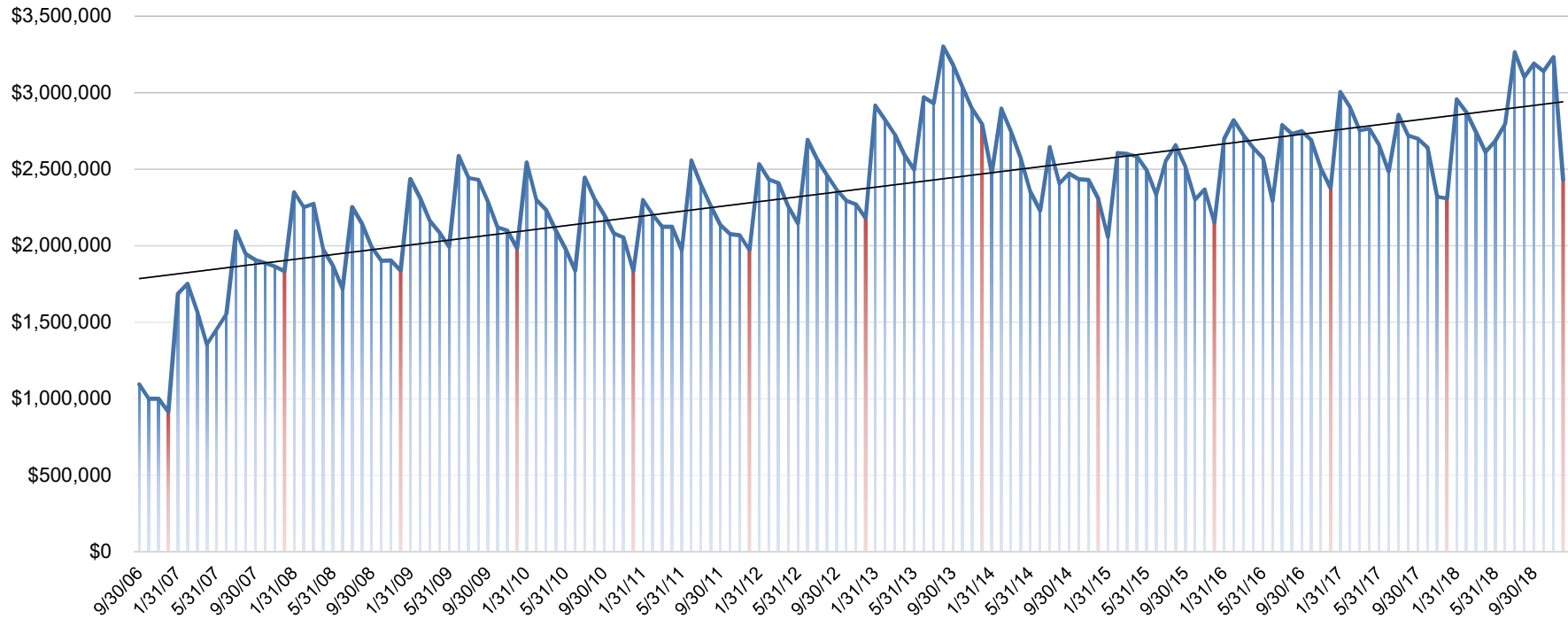


**Century Center Bank Statement Cash Summary**  
**September 30, 2006 through December 31, 2018**  
**Updated - January 2, 2019**

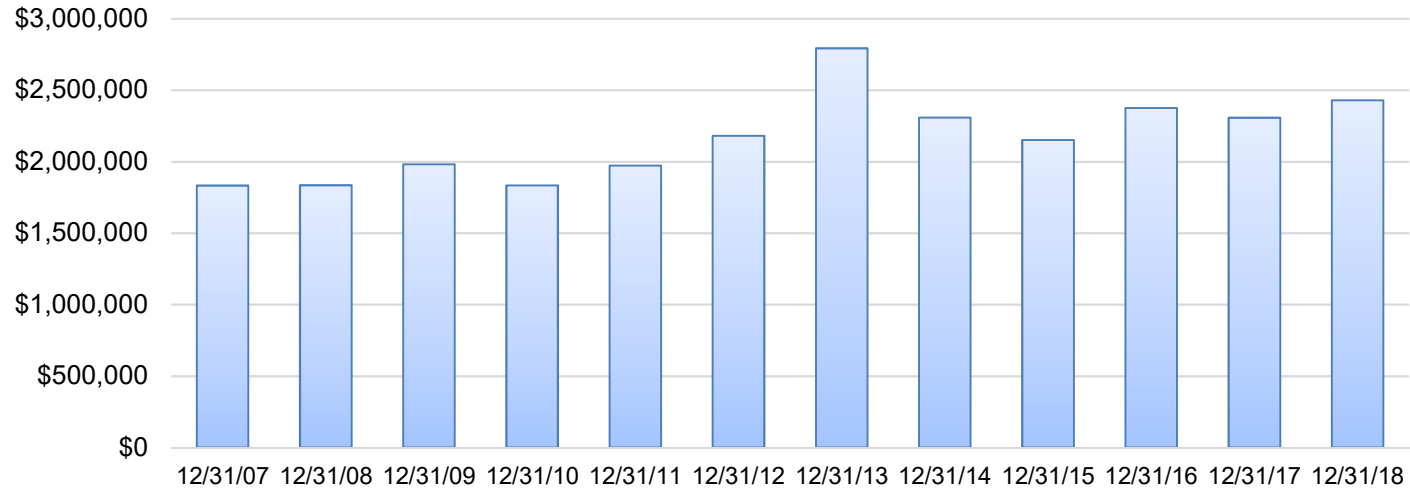
Month	Key Bank Capital & Investment Account	Key Bank Operating (1) Account	Key Bank A/P - Payroll Account	Key Bank Event Account	Key Bank Energy Bond (4) Account	Certificate of Deposit Capital	Old National Loan	Net	Notes
Receipts	71.12	102,200.15	445,500.00	37,512.92	4.12	-	-	585,288.31	
Disbursements (6)	(1,500.00)	(447,547.90)	(429,224.94)	(29,084.34)	-	-	-	(907,357.18)	Operating Acct transfer to Payroll/AP Account
<b>Ending Balance - November 30, 2017</b>	<b>865,279.14</b>	<b>1,230,956.02</b>	<b>75,549.12</b>	<b>98,437.00</b>	<b>50,127.83</b>	-	-	<b>2,320,349.11</b>	
Receipts	73.49	325,196.99	274,960.00	36,474.54	4.26	-	-	636,709.28	
Disbursements	-	(275,174.76)	(357,405.82)	(16,574.54)	-	-	-	(649,155.12)	Operating Acct transfer to Payroll/AP Account
<b>Ending Balance - December 31, 2017</b>	<b>865,352.63</b>	<b>1,280,978.25</b>	<b>(6,896.70)</b>	<b>118,337.00</b>	<b>50,132.09</b>	-	-	<b>2,307,903.27</b>	
Receipts	73.50	965,841.23	368,946.93	45,604.42	4.25	-	-	1,380,470.33	Hotel/Motel Tax deposit
Disbursements	-	(367,651.21)	(332,257.20)	(31,663.83)	-	-	-	(731,572.24)	Operating Acct transfer to Payroll/AP Account
<b>Ending Balance - January 31, 2018</b>	<b>865,426.13</b>	<b>1,879,168.27</b>	<b>29,793.03</b>	<b>132,277.59</b>	<b>50,136.34</b>	-	-	<b>2,956,801.36</b>	
Receipts	66.39	211,771.13	378,234.17	47,320.13	3.85	-	-	637,395.67	
Disbursements	-	(381,723.39)	(338,920.56)	-	-	-	-	(720,643.95)	Operating Acct transfer to Payroll/AP Account
<b>Ending Balance - February 28, 2018</b>	<b>865,492.52</b>	<b>1,709,216.01</b>	<b>69,106.64</b>	<b>179,597.72</b>	<b>50,140.19</b>	-	-	<b>2,873,553.08</b>	
Receipts	73.28	280,820.04	351,139.85	22,887.05	4.26	-	-	654,924.48	
Disbursements	(5,215.89)	(346,580.67)	(334,252.94)	(98,821.87)	-	-	-	(784,871.37)	Operating Acct transfer to Payroll/AP Account
<b>Ending Balance - March 31, 2018</b>	<b>860,349.91</b>	<b>1,643,455.38</b>	<b>85,993.55</b>	<b>103,662.90</b>	<b>50,144.45</b>	-	-	<b>2,743,606.19</b>	
Receipts	70.72	126,947.00	309,050.80	42,830.70	4.12	-	-	478,903.34	
Disbursements	-	(308,719.06)	(284,153.42)	(16,892.80)	-	-	-	(609,765.28)	Operating Acct transfer to Payroll/AP Account
<b>Ending Balance - April 30, 2018</b>	<b>860,420.63</b>	<b>1,461,683.32</b>	<b>110,890.93</b>	<b>129,600.80</b>	<b>50,148.57</b>	-	-	<b>2,612,744.25</b>	
Receipts	72.97	430,071.57	360,800.00	50,072.07	4.26	-	-	841,020.87	
Disbursements	(4,800.00)	(357,799.47)	(367,605.89)	(40,903.37)	-	-	-	(771,108.73)	Operating Acct transfer to Payroll/AP Account
<b>Ending Balance - May 31, 2018</b>	<b>855,693.60</b>	<b>1,533,955.42</b>	<b>104,085.04</b>	<b>138,769.50</b>	<b>50,152.83</b>	-	-	<b>2,682,656.39</b>	
Receipts	70.34	425,381.48	250,064.78	115,917.53	4.12	-	-	791,438.25	
Disbursements	-	(254,729.61)	(253,694.85)	(169,757.03)	-	-	-	(678,181.49)	Operating Acct transfer to Payroll/AP Account
<b>Ending Balance - June 30, 2018</b>	<b>855,763.94</b>	<b>1,704,607.29</b>	<b>100,454.97</b>	<b>84,930.00</b>	<b>50,156.95</b>	-	-	<b>2,795,913.15</b>	
Receipts	72.68	777,238.80	292,000.00	13,865.36	4.26	-	-	1,083,181.10	Hotel/Motel Tax deposit
Disbursements	-	(296,682.12)	(317,553.03)	-	-	-	-	(614,235.15)	Operating Acct transfer to Payroll/AP Account
<b>Ending Balance - July 31, 2018</b>	<b>855,836.62</b>	<b>2,185,163.97</b>	<b>74,901.94</b>	<b>98,795.36</b>	<b>50,161.21</b>	-	-	<b>3,264,859.10</b>	
Receipts	72.69	225,962.84	385,000.00	14,852.33	4.26	-	-	625,892.12	
Disbursements	-	(388,568.43)	(369,086.23)	(32,714.19)	-	-	-	(790,368.85)	Operating Acct transfer to Payroll/AP Account
<b>Ending Balance - August 31, 2018</b>	<b>855,909.31</b>	<b>2,022,558.38</b>	<b>90,815.71</b>	<b>80,933.50</b>	<b>50,165.47</b>	-	-	<b>3,100,382.37</b>	
Receipts	70.35	306,077.58	314,248.00	62,499.85	4.13	-	-	682,899.91	
Disbursements	-	(315,568.80)	(237,122.56)	(39,500.00)	-	-	-	(592,191.36)	Operating Acct transfer to Payroll/AP Account
<b>Ending Balance - September 30, 2018</b>	<b>855,979.66</b>	<b>2,013,067.16</b>	<b>167,941.15</b>	<b>103,933.35</b>	<b>50,169.60</b>	-	-	<b>3,191,090.92</b>	
Receipts	181.77	343,441.71	298,493.82	80,072.88	10.65	-	-	722,200.83	
Disbursements	-	(299,914.87)	(390,825.99)	(81,925.23)	-	-	-	(772,666.09)	Operating Acct transfer to Payroll/AP Account
<b>Ending Balance - October 31, 2018</b>	<b>856,161.43</b>	<b>2,056,594.00</b>	<b>75,608.98</b>	<b>102,081.00</b>	<b>50,180.25</b>	-	-	<b>3,140,625.66</b>	
Receipts	715.71	673,023.91	400,866.41	37,754.58	10.31	-	-	1,112,370.92	
Disbursements	-	(404,530.38)	(476,475.39)	(139,835.58)	-	-	-	(1,020,841.35)	A/P - Payroll & Event Accounts ZBA to Operating
<b>Ending Balance - November 30, 2018</b>	<b>856,877.14</b>	<b>2,325,087.53</b>	-	-	<b>50,190.56</b>	-	-	<b>3,232,155.23</b>	
Receipts	486.08	227,182.58	1,027,907.51	43,281.37	10.66	-	-	1,298,868.20	A/P - Payroll & Event Accounts ZBA to Operating
Disbursements	-	(1,029,733.14)	(1,027,907.51)	(43,281.37)	-	-	-	(2,100,922.02)	Capital & Investment Combined - Capital sweeps into Investment
<b>Ending Balance - December 31, 2018</b>	<b>857,363.22</b>	<b>1,522,536.97</b>	-	-	<b>50,201.22</b>	-	-	<b>2,430,101.41</b>	

- (1) Set up new account during March 31, 2008. Transfer from old account.
- (2) Errors in account transfers between bank accounts. Net effect is zero. These have been reversed in April, 2008.
- (3) Transfer from Capital account to Operating account to cover smallwares purchased in 2014 with SMG Capital contribution from 2013.
- (4) Set up new account in May 2015 to fund Energy Savings Bond Contract.
- (5) Transfer from Capital account to AP account to cover downpayment on Energy Conservation Bond project.
- (6) Transfer from Capital account to AP account to help pay for parking lot analysis performed by Rich & Associates.
- (7) New Account Structure Effective 11/28/18 - AP/Payroll & Event Accounts now ZBA and funding in/out of Operating Account. Capital Account will sweep into an Investment Account. Debt Service is the same.

## Century Center Bank Balances Net of Old National Loan September 30, 2006 through December 31, 2018



## Bank Statement Balances Net of Old National Loan December 31, 2007 - December 31, 2018



	<b>Amount</b>	<b>Annual Percent Change</b>	<b>Cumulative Percent Change</b>
12/31/07	\$1,833,190.66	-	-
12/31/08	\$1,835,631.80	0.13%	0.13%
12/31/09	\$1,981,864.65	7.97%	8.11%
12/31/10	\$1,834,795.65	-7.42%	0.09%
12/31/11	\$1,972,414.78	7.50%	7.59%
12/31/12	\$2,180,887.49	10.57%	18.97%
12/31/13	\$2,793,852.87	28.11%	52.40%
12/31/14	\$2,308,293.66	-17.38%	25.92%
12/31/15	\$2,152,039.03	-6.77%	17.39%
12/31/16	\$2,376,504.88	10.43%	29.64%
12/31/17	\$2,307,903.27	-2.89%	25.90%
12/31/18	\$2,430,101.41	5.29%	32.56%

Note: Hotel/motel tax revenue is typically received in January/February and June/July.  
SMG contributed \$575,000 in August 2013.