



**Period Ending:** December 31, 2016

**Issued BY:** Adm & Finance

# **Century Center CAFR Summary**

## **1995 to 2016**

<b>Page Numbers</b>	<b>Contents</b>
2-3	<i>CAFR Trends</i>
4	<i>Revenue &amp; Expenses Trends</i>
5	<i>Revenue &amp; Expenses - Including Depreciation</i>
6	<i>Revenue &amp; Expenses - Excluding Depreciation</i>
7	<i>Operating Revenue &amp; Expenses - Excluding Depreciation</i>
8	<i>Hotel/Motel Tax Revenue Trends</i>
9	<i>PSDA Tax Revenue Trends</i>
10	<i>Fees &amp; Charges Revenue Trends</i>
11	<i>Parking Fees Revenue Trends</i>
12	<i>Total Revenue Trends</i>
13	<i>General &amp; Administrative Expense Trends</i>
14	<i>Depreciation Expense Trends</i>
15	<i>Expenses by Type - 2016 &amp; 2015</i>
16	<i>Total Expense Trends</i>
17	<i>Capital Contributions from Other Sources</i>

**Century Center  
Comprehensive Annual Financial Report (CAFR) Summary  
1995 - 2016  
Updated - March 20, 2016**

Year	Revenue								Expenses			
	Hotel/Motel Tax	PSDA Tax	Fees/Charges	Parking Fees	Interest Income	Transfers In	Licenses/Permits	Other Income	Total Revenue	General/Administration	Depreciation Expense	Interest Expense
1995	\$855,576	\$0	\$1,226,892	\$151,695	\$48,154	\$0	\$0	\$128,313	\$2,410,630	\$2,254,588	\$435,101	\$24,136
1996	940,294	0	1,172,757	140,790	83,833	0	0	186,022	2,523,696	2,264,186	452,940	27,227
1997	1,012,978	0	1,138,694	134,998	38,524	0	0	232,124	2,557,318	2,406,578	565,086	26,887
1998	1,085,399	0	1,288,632	146,846	35,726	0	0	205,398	2,762,001	2,516,711	567,548	19,536
1999	1,144,096	0	1,302,693	180,954	47,023	0	0	204,790	2,879,556	2,508,543	583,147	22,569
2000	1,220,860	0	1,347,724	176,254	57,699	0	0	214,030	3,016,567	2,653,530	589,362	19,588
2001	1,269,694	0	1,385,932	182,439	45,400	0	0	219,103	3,102,568	2,849,170	571,561	11,764
2002 (1)	1,020,628	0	1,466,399	192,234	42,190	0	0	189,464	2,910,915	2,767,768	597,933	7,268
2003	1,130,575	0	1,324,233	223,980	32,763	20,610	0	135,964	2,868,125	2,813,791	633,226	10,190
2004	1,164,493	0	1,345,660	227,420	16,765	118,953	88,000	176,683	3,137,974	2,921,009	576,367	16,827
2005	1,235,849	0	1,367,598	236,754	27,114	0	0	307,545	3,174,860	2,894,940	548,235	25,426
2006	1,247,928	100,000	1,337,966	242,347	40,222	0	87,500	97,523	3,153,486	2,759,417	559,942	29,352
2007	1,361,263	100,000	1,520,686	216,409	73,027	0	80,745	92,450	3,444,580	2,908,204	529,282	32,940
2008	1,497,390	100,000	1,507,811	200,601	40,060	0	0	65,000	3,410,862	2,992,560	519,660	12,533
2009 (2)	1,347,651	100,000	1,116,825	178,916	15,570	0	0	130,574	2,889,536	2,617,186	533,494	5,701
2010	1,313,152	100,000	1,268,568	182,803	6,600	0	0	4,487	2,875,610	2,525,793	460,732	3,061
2011	1,313,437	100,000	1,336,807	144,669	1,775	0	0	0	2,896,688	2,477,498	515,667	0
2012 (4)	1,313,436	100,000	1,113,278	153,362	593	0	0	0	2,680,669	2,216,517	665,015	0
2013 (5)	1,313,436	100,000	1,923,625	110,884	3,394	0	0	15,868	3,467,207	3,566,567	763,870	0
2014 (6)	1,313,450	0	2,411,607	100,634	329	0	0	0	3,826,020	4,058,811	785,883	0
2015	1,313,450	0	2,773,564	115,550	809	0	0	0	4,203,373	4,039,630	815,117	0
2016	1,313,450	0	3,372,435	110,792	932	0	0	0	4,797,609	4,302,253	1,062,219	0

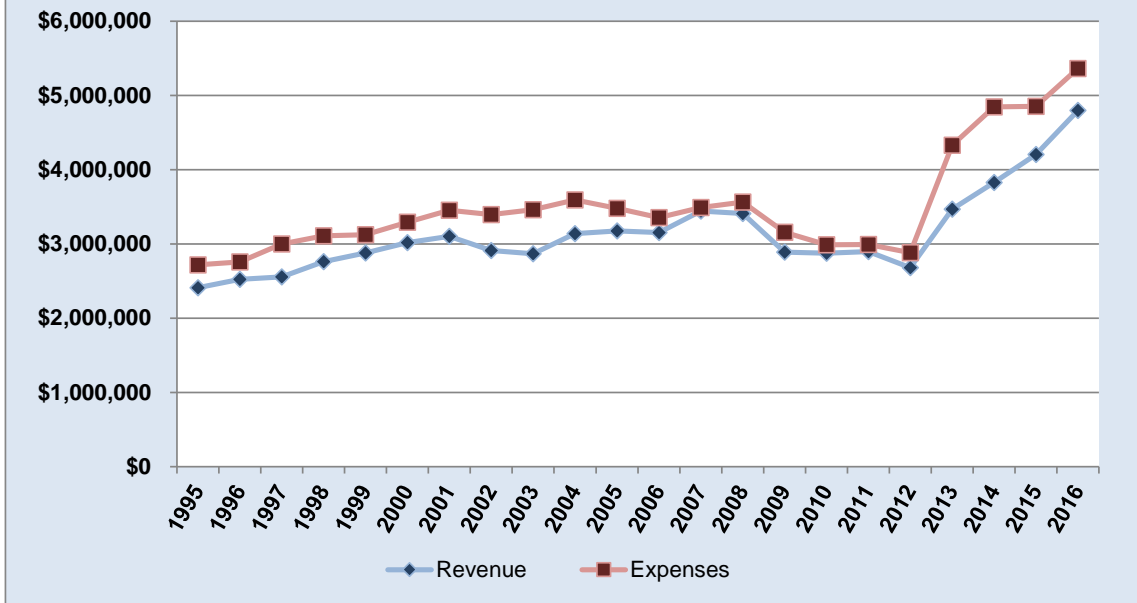
Source: 1995-2015 City of South Bend, Indiana Comprehensive Annual Financial Reports (CAFR) and 2016 adjusted trial balance (not audited)

- (1) The term Retained Earnings was eliminated with GASB Statement No. 34 for the year ended December 31, 2002. The term was replaced by total net position, which includes the undepreciated value of the building and other fixed assets.  
(2) \$331,885 loss on disposition of fixed assets during 2009 and \$1,730,208 during 2012 due to writeoff of old and obsolete fixed assets.  
(3) Capital contributions recorded for the cost of capital assets paid by other non-Century Center funds (i.e. Revenue Bonds, City funds, TIF funds, County Hotel/Motel tax fund).  
(4) Includes \$522,279.94 debit to fund balance for a prior period adjustment for a correction of fixed assets disposals.

**Century Center  
Comprehensive Annual  
1995 - 2016  
Updated - March 20, 201**

Year	Other Expenses	Total Expenses	Income/(Loss) Before Contributions	Capital (3) Contributions	Loss on Capital Asset Disposal	Transfers	Add back: Depreciation	Change In Net Position	Beginning Net Position	Ending Net Position	Ending Reconciled Cash/Investments
1995	\$4,803	\$2,718,628	(\$307,998)	\$0	\$0	\$0	\$346,233	\$38,235	\$856,785	\$895,020	\$1,068,705
1996	13,279	2,757,632	(233,936)	0	0	0	342,843	108,907	895,020	1,003,927	1,220,036
1997	0	2,998,551	(441,233)	0	0	0	444,544	3,311	1,003,927	1,007,238	616,923
1998	4,860	3,108,655	(346,654)	0	0	0	445,138	98,484	1,007,238	1,105,722	747,170
1999	9,364	3,123,623	(244,067)	0	0	0	448,328	204,261	1,105,722	1,309,983	982,344
2000	30,417	3,292,897	(276,330)	0	0	0	470,595	194,265	1,309,983	1,504,248	975,276
2001	22,894	3,455,389	(352,821)	0	0	0	427,338	74,517	1,504,248	1,578,765	1,411,516
2002 (1)	22,600	3,395,569	(484,654)	0	0	0	510,842	26,188	15,612,481	15,638,669	1,291,953
2003	2,930	3,460,137	(592,012)	20,610	0	0	0	(571,402)	15,638,669	15,067,267	1,118,307
2004	78,424	3,592,627	(454,653)	0	0	0	0	(454,653)	15,067,267	14,612,614	910,917
2005	9,758	3,478,359	(303,499)	0	0	0	0	(303,499)	14,612,614	14,309,115	991,788
2006	6,820	3,355,531	(202,045)	322,726	0	0	0	120,681	14,309,115	14,429,796	1,360,909
2007	19,677	3,490,103	(45,523)	144,936	0	0	0	99,413	14,429,796	14,529,209	2,204,759
2008	37,532	3,562,285	(151,423)	735,704	0	0	0	584,281	14,529,209	15,113,490	2,127,454
2009 (2)	0	3,156,381	(266,845)	3,179,850	(331,885)	0	0	2,581,120	15,113,490	17,694,610	2,206,814
2010	0	2,989,586	(113,976)	351,986	0	0	0	238,010	17,694,610	17,932,620	1,821,230
2011	0	2,993,165	(96,477)	614,423	(107,319)	0	0	410,627	17,932,620	18,343,247	1,951,204
2012 (4)	0	2,881,532	(200,863)	655,737	(47,736)	0	0	407,138	17,820,966	18,228,104	2,177,390
2013 (5)	0	4,330,437	(863,230)	697,917	(219)	0	0	(165,532)	18,228,104	18,062,572	2,661,172
2014 (6)	0	4,844,694	(1,018,674)	106,333	0	0	0	(912,341)	18,062,572	17,150,231	2,311,538
2015	0	4,854,747	(651,374)	4,683,424	0	(50,000)	0	3,982,050	17,150,231	21,132,281	2,098,964
2016	0	5,364,472	(566,863)	619,001	(286,985)	(79,676)	0	(314,523)	21,132,281	20,817,758	2,246,138
<b>Source: 1995-2015 City c</b>											
(1) The term Retained Ear											
(2) \$331,885 loss on dispc											
(3) Capital contributions re											
(4) Includes \$522,279.94 c											

## Century Center Revenue & Expenses Per CAFR - 1995 to 2016

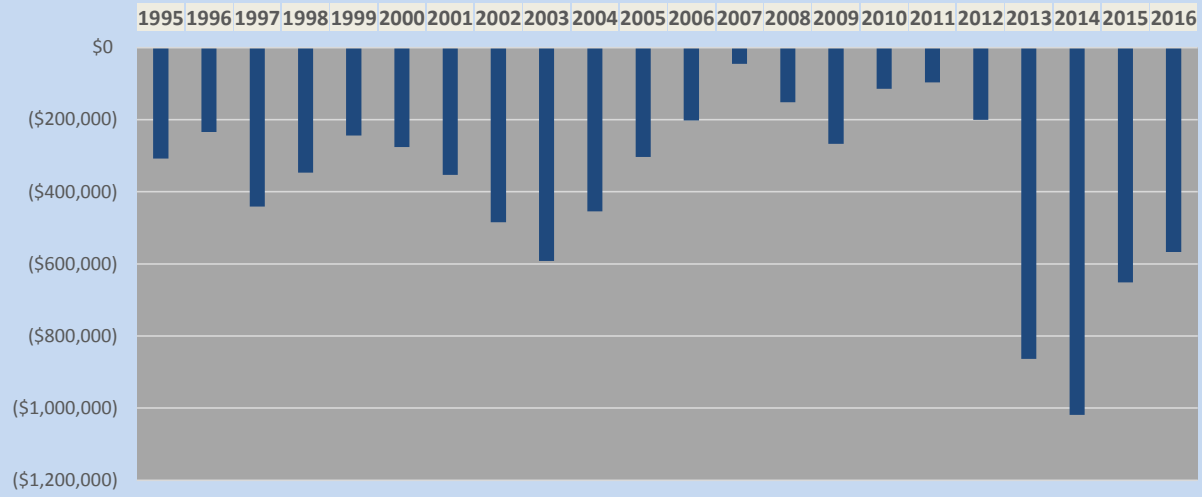


Year	Revenue	Expenses	Net
1995	2,410,630	2,718,628	(307,998)
1996	2,523,696	2,757,632	(233,936)
1997	2,557,318	2,998,551	(441,233)
1998	2,762,001	3,108,655	(346,654)
1999	2,879,556	3,123,623	(244,067)
2000	3,016,567	3,292,897	(276,330)
2001	3,102,568	3,455,389	(352,821)
2002	2,910,915	3,395,569	(484,654)
2003	2,868,125	3,460,137	(592,012)
2004	3,137,974	3,592,627	(454,653)
2005	3,174,860	3,478,359	(303,499)
2006	3,153,486	3,355,531	(202,045)
2007	3,444,580	3,490,103	(45,523)
2008	3,410,862	3,562,285	(151,423)
2009	2,889,536	3,156,381	(266,845)
2010	2,875,610	2,989,586	(113,976)
2011	2,896,688	2,993,165	(96,477)
2012	2,680,669	2,881,532	(200,863)
2013	3,467,207	4,330,437	(863,230)
2014	3,826,020	4,844,694	(1,018,674)
2015	4,203,373	4,854,747	(651,374)
2016	4,797,609	5,364,472	(566,863)

Revenue excludes capital contributions. Expenses includes depreciation and excludes losses on asset disposals and transfers. Includes food & beverage gross revenue and expenditures beginning July 1, 2013.

Source: City of South Bend Comprehensive Annual Financial Reports (CAFR).

## Total Revenue less Total Expenses (including depreciation)



Year	Total Revenue	Total Expenses	Net
1995	2,410,630	2,718,628	(307,998)
1996	2,523,696	2,757,632	(233,936)
1997	2,557,318	2,998,551	(441,233)
1998	2,762,001	3,108,655	(346,654)
1999	2,879,556	3,123,623	(244,067)
2000	3,016,567	3,292,897	(276,330)
2001	3,102,568	3,455,389	(352,821)
2002	2,910,915	3,395,569	(484,654)
2003	2,868,125	3,460,137	(592,012)
2004	3,137,974	3,592,627	(454,653)
2005	3,174,860	3,478,359	(303,499)
2006	3,153,486	3,355,531	(202,045)
2007	3,444,580	3,490,103	(45,523)
2008	3,410,862	3,562,285	(151,423)
2009	2,889,536	3,156,381	(266,845)
2010	2,875,610	2,989,586	(113,976)
2011	2,896,688	2,993,165	(96,477)
2012	2,680,669	2,881,532	(200,863)
2013	3,467,207	4,330,437	(863,230)
2014	3,826,020	4,844,694	(1,018,674)
2015	4,203,373	4,854,747	(651,374)
2016	4,797,609	5,364,472	(566,863)

Revenue excludes capital contributions. Expenses includes depreciation and excludes losses on asset disposals and transfers. Includes food & beverage gross revenue and expenditures beginning July 1, 2013.

Source: City of South Bend Comprehensive Annual Financial Reports (CAFR).

### Total Revenue Less Total Expenses (excluding depreciation)

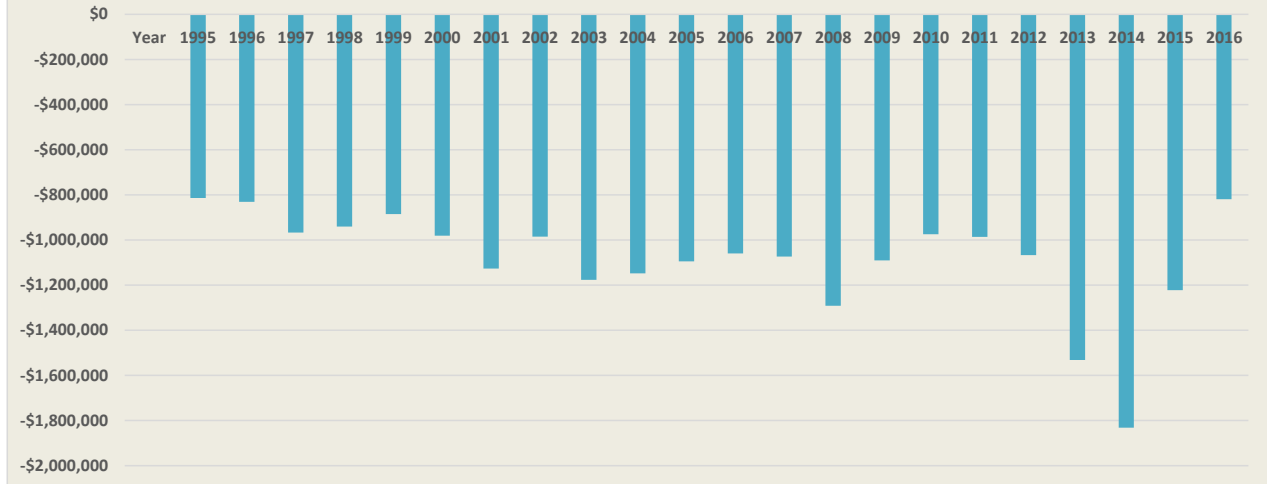


Manager	Year	Total Revenue	Total Expenses	Depreciation	Net Expenses	Net Results
City	1995	2,410,630	2,718,628	435,101	2,283,527	127,103
City	1996	2,523,696	2,757,632	452,940	2,304,692	219,004
City	1997	2,557,318	2,998,551	565,086	2,433,465	123,853
City	1998	2,762,001	3,108,655	567,548	2,541,107	220,894
City	1999	2,879,556	3,123,623	583,147	2,540,476	339,080
City	2000	3,016,567	3,292,897	589,362	2,703,535	313,032
City	2001	3,102,568	3,455,389	571,561	2,883,828	218,740
City	2002	2,910,915	3,395,569	597,933	2,797,636	113,279
City	2003	2,868,125	3,460,137	633,226	2,826,911	41,214
City	2004	3,137,974	3,592,627	576,367	3,016,260	121,714
City	2005	3,174,860	3,478,359	548,235	2,930,124	244,736
City	2006	3,153,486	3,355,531	559,942	2,795,589	357,897
Global Spectrum	2007	3,444,580	3,490,103	529,282	2,960,821	483,759
Global Spectrum	2008	3,410,862	3,562,285	519,660	3,042,625	368,237
Global Spectrum	2009	2,889,536	3,156,381	533,494	2,622,887	266,649
Global Spectrum	2010	2,875,610	2,989,586	460,732	2,528,854	346,756
Global Spectrum	2011	2,896,688	2,993,165	515,667	2,477,498	419,190
Global Spectrum	2012	2,680,669	2,881,532	665,015	2,216,517	464,152
Global Spectrum/SMG	2013	3,467,207	4,330,437	763,870	3,566,567	(99,360)
SMG	2014	3,826,020	4,844,694	785,883	4,058,811	(232,791)
SMG	2015	4,203,373	4,854,747	815,117	4,039,630	163,743
SMG	2016	4,797,609	5,364,472	1,062,219	4,302,253	495,356

Revenue excludes capital contributions and expenses excludes depreciation and losses on asset disposals and transfers. Includes food & beverage gross revenue and expenditures beginning July 1, 2013.

Source: City of South Bend Comprehensive Annual Financial Reports (CAFR).

### Operating Revenue Less Operating Expenses (excluding depreciation)



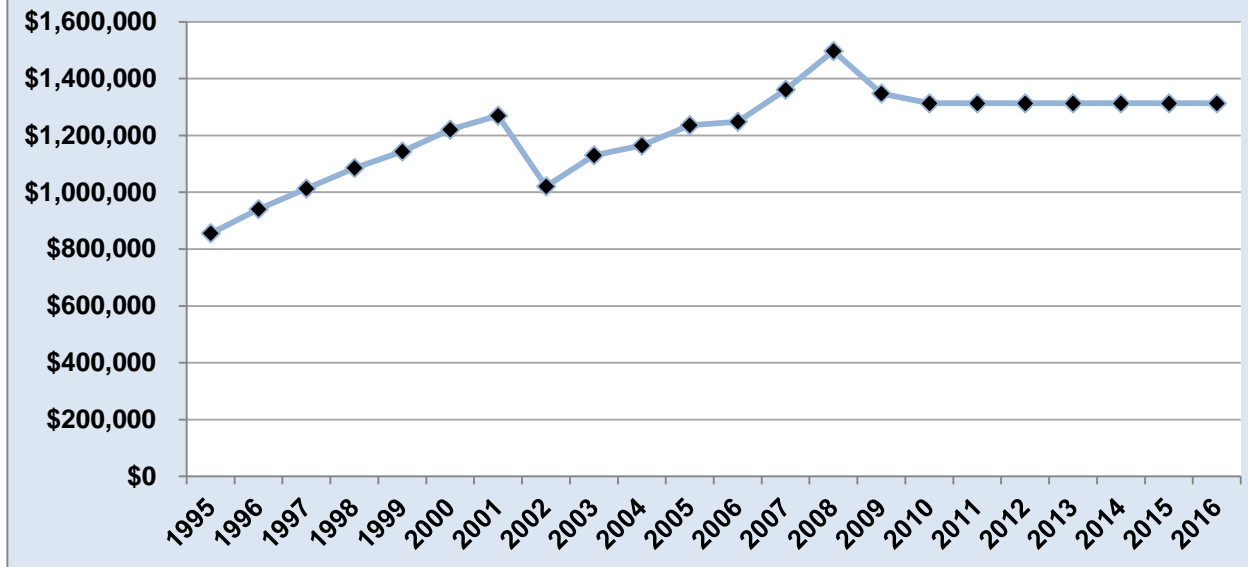
Manager	Year	Operating Revenue	Operating Expenses	Deduct Depreciation	Net Oper. Expenses	Operating Income/(Loss)	Average
City	1995	1,440,900	2,689,689	435,101	2,254,588	(813,688)	
City	1996	1,433,569	2,717,126	452,940	2,264,186	(830,617)	
City	1997	1,439,816	2,971,664	565,086	2,406,578	(966,762)	
City	1998	1,575,876	3,084,259	567,548	2,516,711	(940,835)	
City	1999	1,623,437	3,091,690	583,147	2,508,543	(885,106)	
City	2000	1,673,008	3,242,892	589,362	2,653,530	(980,522)	
City	2001	1,722,474	3,420,731	571,561	2,849,170	(1,126,696)	
City	2002	1,783,097	3,365,701	597,933	2,767,768	(984,671)	
City	2003	1,639,787	3,449,947	633,226	2,816,721	(1,176,934)	
City	2004	1,772,763	3,497,376	576,367	2,921,009	(1,148,246)	
City	2005	1,799,966	3,443,175	548,235	2,894,940	(1,094,974)	
City	2006	1,700,336	3,319,359	559,942	2,759,417	(1,059,081)	(1,000,678)
Global Spectrum	2007	1,845,290	3,447,686	529,282	2,918,404	(1,073,114)	
Global Spectrum	2008	1,708,412	3,519,747	519,660	3,000,087	(1,291,675)	
Global Spectrum	2009	1,526,315	3,150,680	533,494	2,617,186	(1,090,871)	
Global Spectrum	2010	1,551,371	2,986,525	460,732	2,525,793	(974,422)	
Global Spectrum	2011	1,491,634	2,993,165	515,667	2,477,498	(985,864)	
Global Spectrum	2012	1,149,365	2,881,532	665,015	2,216,517	(1,067,152)	(1,080,516)
Global Spectrum/SMG	2013	2,034,509	4,330,437	763,870	3,566,567	(1,532,058)	(1,532,058)
SMG	2014	2,227,171	4,844,694	785,883	4,058,811	(1,831,640)	
SMG	2015	2,817,114	4,854,747	815,117	4,039,630	(1,222,516)	
SMG	2016	3,483,226	5,364,472	1,062,219	4,302,253	(819,027)	(1,291,061)

Revenue excludes capital contributions and expenses excludes depreciation and losses on asset disposals and transfers. Includes food & beverage gross revenue and expenses beginning July 1, 2013.

**(1,226,078)**  
**Total**

Source: City of South Bend Comprehensive Annual Financial Reports (CAFR).

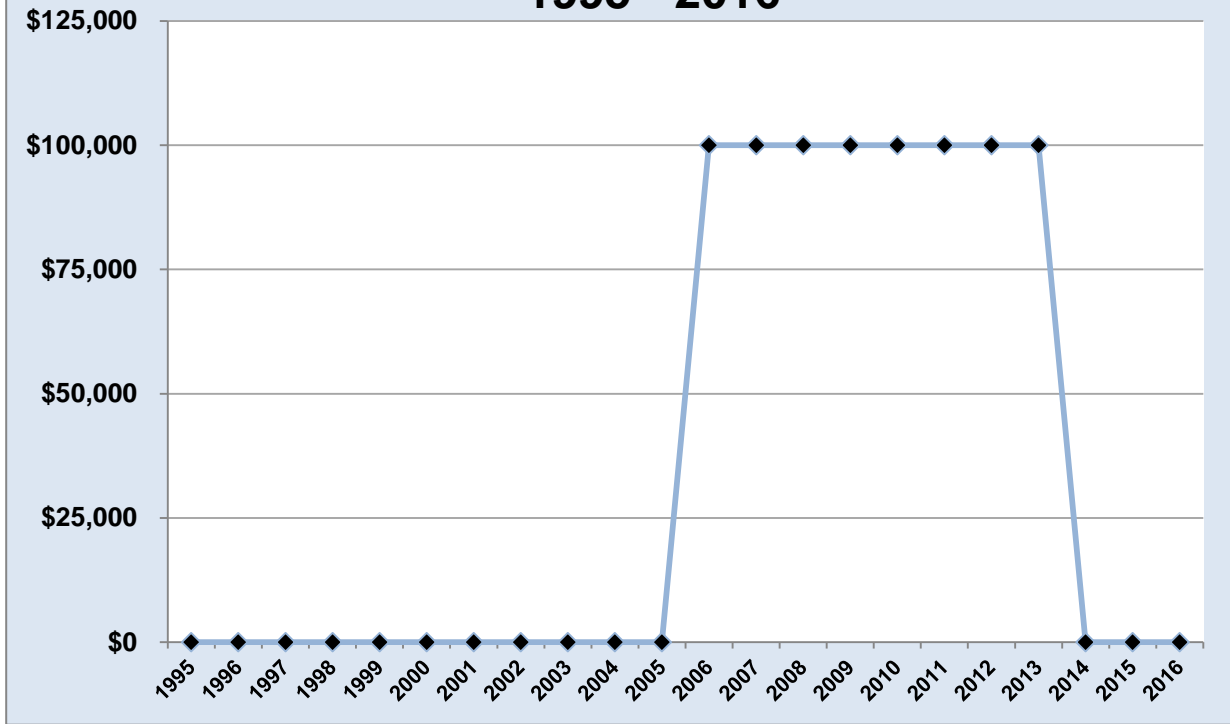
## Hotel/Motel Tax Revenue 1995 - 2016



Year	Hotel/Motel Tax
1995	\$855,576
1996	940,294
1997	1,012,978
1998	1,085,399
1999	1,144,096
2000	1,220,860
2001	1,269,694
2002	1,020,628
2003	1,130,575
2004	1,164,493
2005	1,235,849
2006	1,247,928
2007	1,361,263
2008	1,497,390
2009	1,347,651
2010	1,313,152
2011	1,313,437
2012	1,313,436
2013	1,313,436
2014	1,313,450
2015	1,313,450
2016	1,313,450

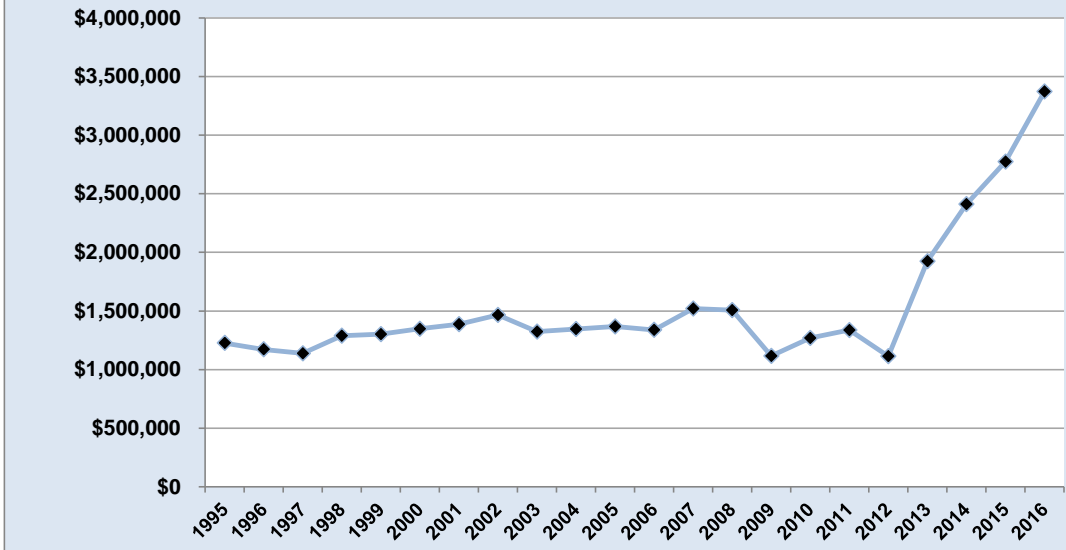


## PSDA Tax Revenue 1995 - 2016



Year	PSDA Tax
1995	\$0
1996	0
1997	0
1998	0
1999	0
2000	0
2001	0
2002	0
2003	0
2004	0
2005	0
2006	100,000
2007	100,000
2008	100,000
2009	100,000
2010	100,000
2011	100,000
2012	100,000
2013	100,000
2014	0
2015	0
2016	0

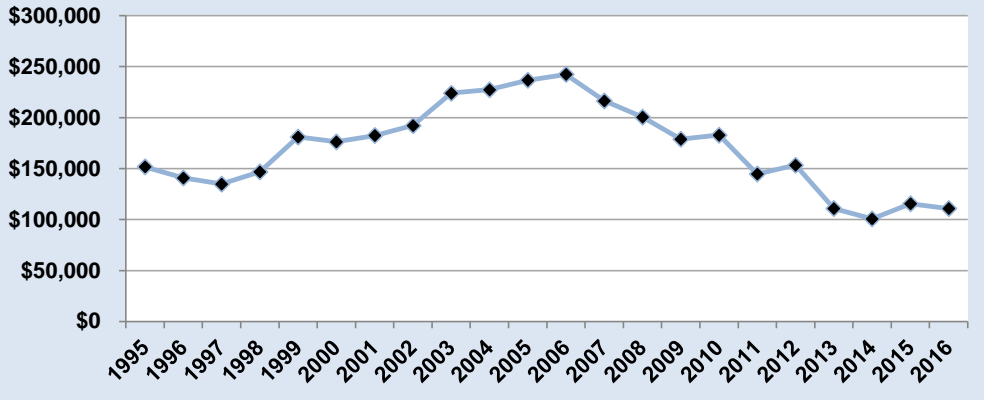
## Fees & Charges Revenue 1995 - 2016



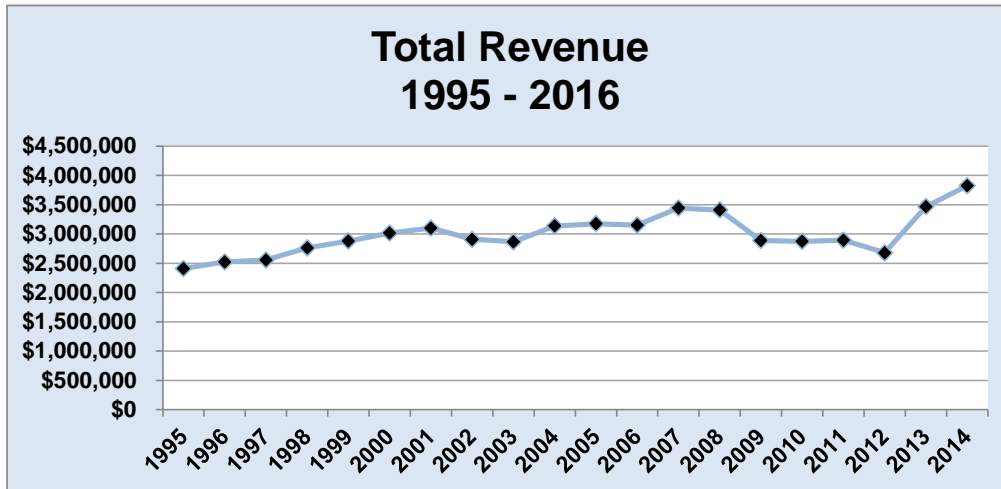
Year	Fees & Charges
1995	\$1,226,892
1996	1,172,757
1997	1,138,694
1998	1,288,632
1999	1,302,693
2000	1,347,724
2001	1,385,932
2002	1,466,399
2003	1,324,233
2004	1,345,660
2005	1,367,598
2006	1,337,966
2007	1,520,686
2008	1,507,811
2009	1,116,825
2010	1,268,568
2011	1,336,807
2012	1,113,278
2013	1,923,625
2014	2,411,607
2015	2,773,564
2016	3,372,435

Includes food & beverage gross revenue beginning July 1, 2013.

## Parking Fee Revenue 1995 - 2016

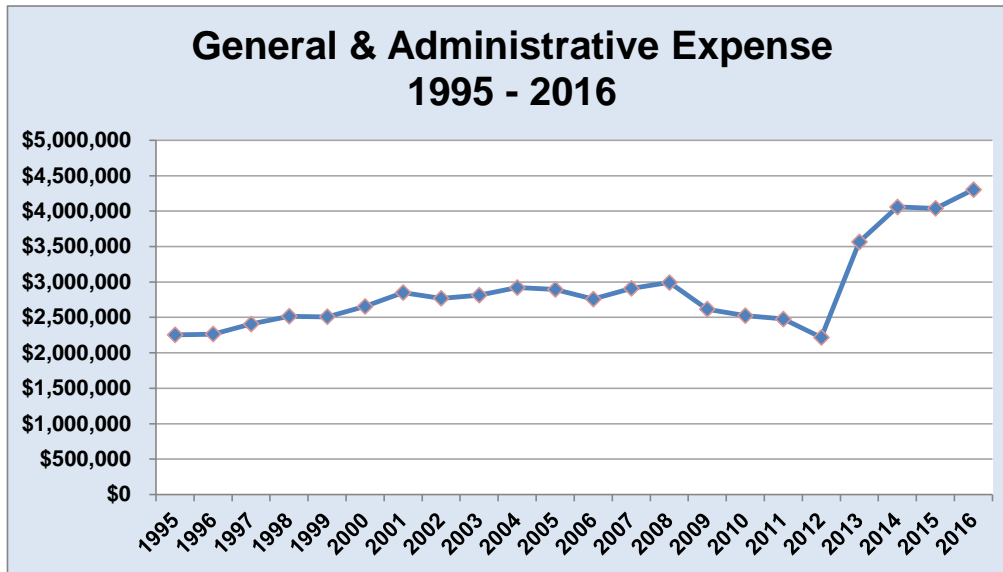


Year	Parking Fees
1995	\$151,695
1996	140,790
1997	134,998
1998	146,846
1999	180,954
2000	176,254
2001	182,439
2002	192,234
2003	223,980
2004	227,420
2005	236,754
2006	242,347
2007	216,409
2008	200,601
2009	178,916
2010	182,803
2011	144,669
2012	153,362
2013	110,884
2014	100,634
2015	115,550
2016	110,792



Year	Total Revenue
1995	\$2,410,630
1996	2,523,696
1997	2,557,318
1998	2,762,001
1999	2,879,556
2000	3,016,567
2001	3,102,568
2002	2,910,915
2003	2,868,125
2004	3,137,974
2005	3,174,860
2006	3,153,486
2007	3,444,580
2008	3,410,862
2009	2,889,536
2010	2,875,610
2011	2,896,688
2012	2,680,669
2013	3,467,207
2014	3,826,020
2015	4,203,373
2015	4,797,609

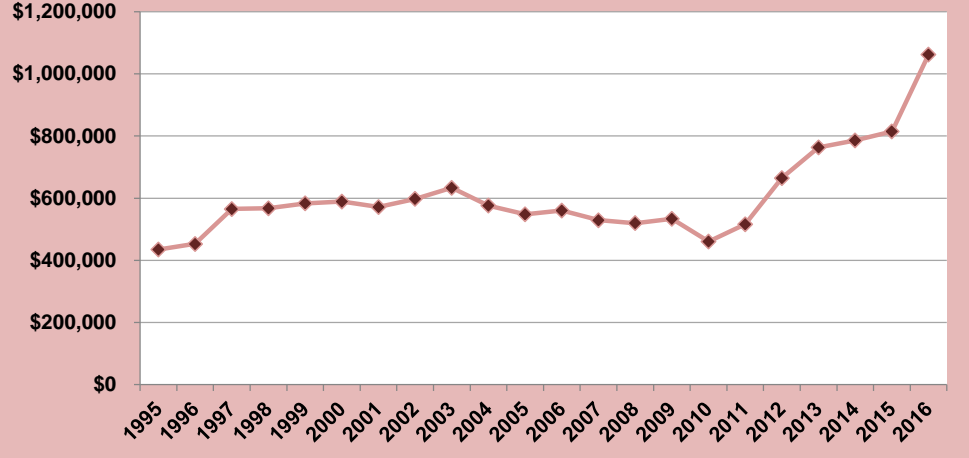
Includes food & beverage gross revenue beginning July 1, 2013.



Year	General Expenditures
1995	\$2,254,588
1996	2,264,186
1997	2,406,578
1998	2,516,711
1999	2,508,543
2000	2,653,530
2001	2,849,170
2002	2,767,768
2003	2,813,791
2004	2,921,009
2005	2,894,940
2006	2,759,417
2007	2,908,204
2008	2,992,560
2009	2,617,186
2010	2,525,793
2011	2,477,498
2012	2,216,517
2013	3,566,567
2014	4,058,811
2015	4,039,630
2016	4,302,253

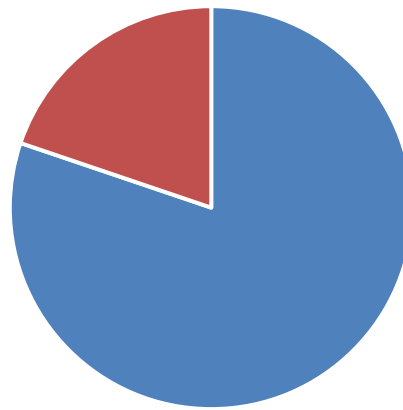
Includes food & beverage gross expenditures beginning July 1, 2013.

## Depreciation Expense 1995 - 2016



Year	Depreciation Expense
1995	\$435,101
1996	452,940
1997	565,086
1998	567,548
1999	583,147
2000	589,362
2001	571,561
2002	597,933
2003	633,226
2004	576,367
2005	548,235
2006	559,942
2007	529,282
2008	519,660
2009	533,494
2010	460,732
2011	515,667
2012	665,015
2013	763,870
2014	785,883
2015	815,117
2016	1,062,219

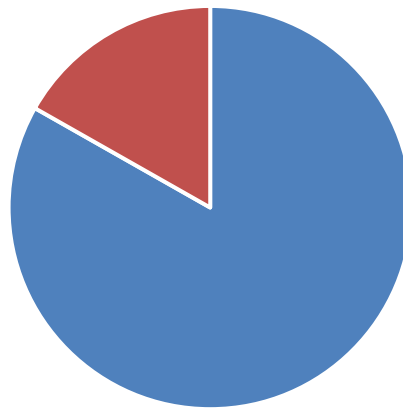
### Century Center 2016 Expenses



■ General & Administration ■ Depreciation

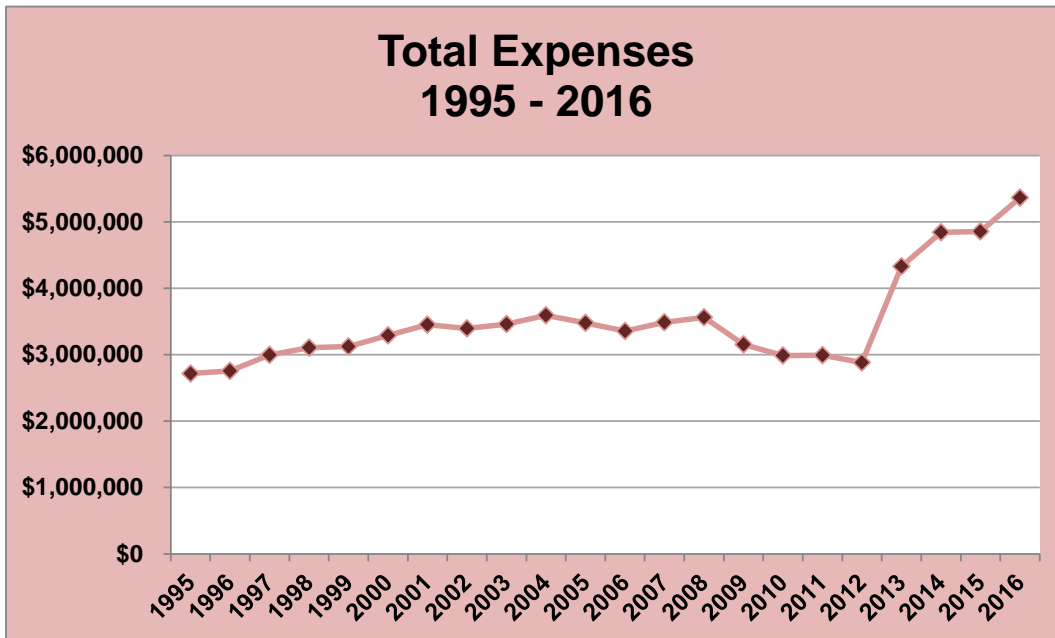
Type	Amount	Percent
General & Administration	4,302,253	80.2%
Depreciation	1,062,219	19.8%
<b>Total Expenses</b>	<b>5,364,472</b>	<b>100.0%</b>

### Century Center 2015 Expenses



■ General & Administration ■ Depreciation

Type	Amount	Percent
General & Administration	4,039,630	83.2%
Depreciation	815,117	16.8%
<b>Total Expenses</b>	<b>4,854,747</b>	<b>100.0%</b>

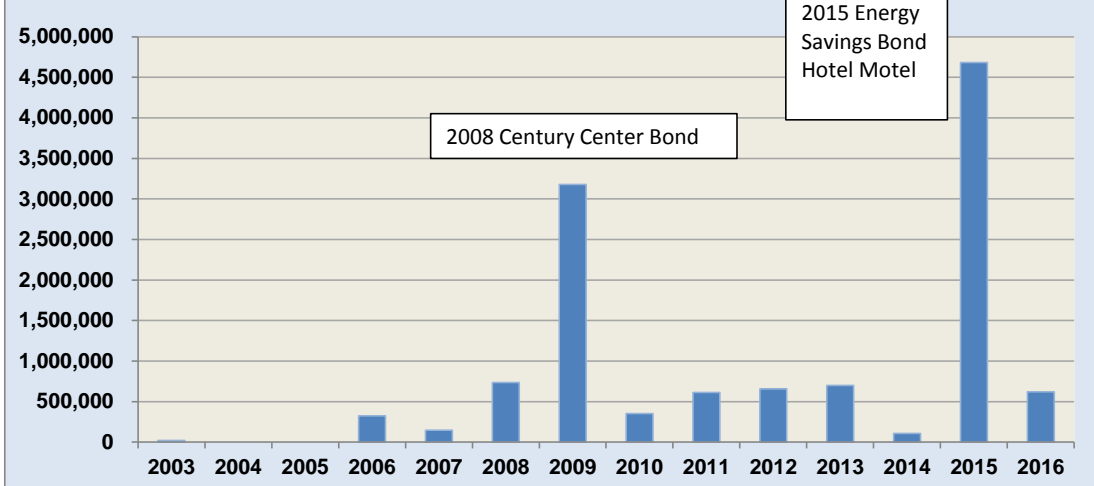


Year	Total Expenditures
1995	\$2,718,628
1996	2,757,632
1997	2,998,551
1998	3,108,655
1999	3,123,623
2000	3,292,897
2001	3,455,389
2002	3,395,569
2003	3,460,137
2004	3,592,627
2005	3,478,359
2006	3,355,531
2007	3,490,103
2008	3,562,285
2009	3,156,381
2010	2,989,586
2011	2,993,165
2012	2,881,532
2013	4,330,437
2014	4,844,694
2015	4,854,747
2016	5,364,472

Includes food & beverage gross expenditures beginning July 1, 2013.



## Capital Contribution from Other Sources 2003 - 2016



<u>Year</u>	<u>Amount</u>
2003	20,610
2004	0
2005	0
2006	322,726
2007	144,936
2008	735,704
2009	3,179,850
2010	351,986
2011	614,423
2012	655,737
2013	697,917
2014	106,333
2015	4,683,424
2016	619,001

Includes capital paid by a bond, energy savings contract, hotel/motel tax fund and other city funds not including Century Center.